

850

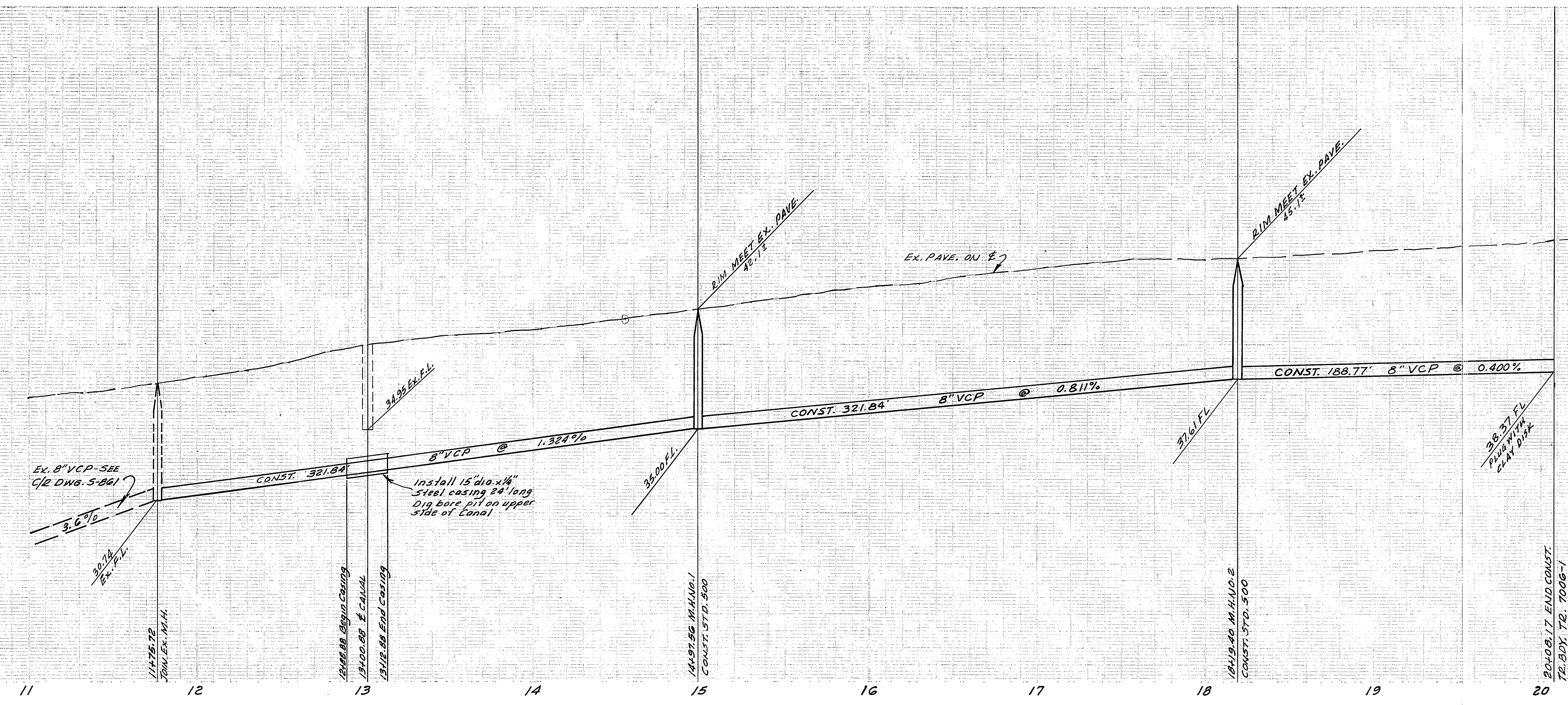
850

840

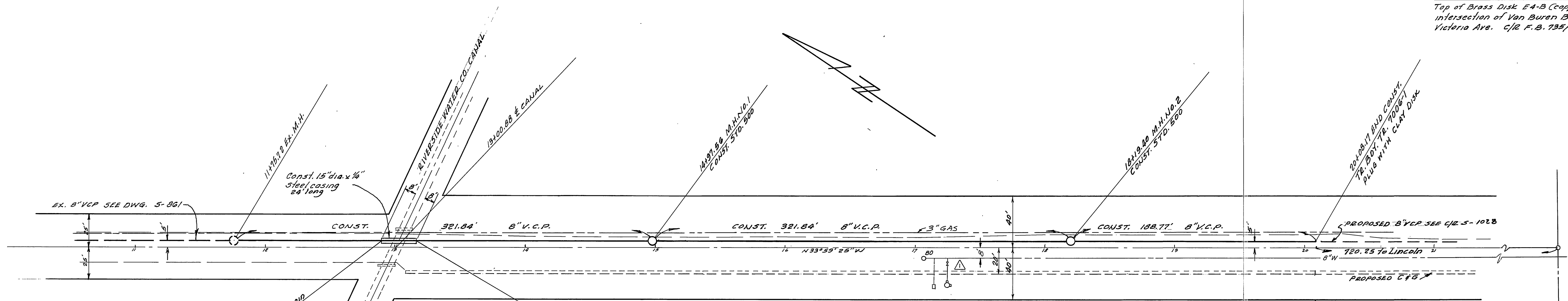
840

830

830



BENCH MARK ELEV. 881.950  
 Top of Brass Disk E-A-B (capped) at the  
 intersection of Van Buren Blvd. and  
 Victoria Ave. C/JE F.B. 195/43



- GENERAL NOTES**
1. Construction shall be in accordance with the City of Riverside Department of Public Works Standard Drawings and the Standard Specification for Public Works Construction, 1973 Edition.
  2. Pipe shall be bedded per Case I, Standard Drawing No. 452.

ALBERT A. WEBB ASSOCIATES CIVIL ENGINEERS RIVERSIDE, CALIFORNIA APPROVED BY <i>Albert A. Webb</i> DATE 2/5/76 R.E. No. 9876	Approved <i>Walter H. Hays</i> Chief Utilities Engr. - Water 3-31-76 Date	CITY OF RIVERSIDE, CALIFORNIA PUBLIC WORKS DEPARTMENT APPROVED BY <i>Walter H. Hays</i> PRINCIPAL ENGINEER PARK DEPARTMENT TRAFFIC DIVISION CHIEF PUB. WKS. ENGR. 4-21-76	SEWER PLAN & PROFILE GIBSON STREET SEWER EXTENSION TRACT NO. 7006-1	ACCOUNT No. DRAWING NUMBER S-1029
	DESIGNED BY REC - DRAWN BY REC - CHECKED BY BDK			DATE 4-21-76 SCALE: HORIZ. 1"=40' VERT. 1"=4' 76-3B