

**GENERAL NOTES**

1. Construction shall be in accordance with the Standard Specifications for Public Works Construction, 1973 Edition, and the City of Riverside Standard Drawings.
2. It shall be the responsibility of the Contractor to clear the Right of Way in accordance with the provisions of law as it affects each utility, including irrigation lines and appurtenances and at no cost to the City.
3. Pipe shall be bedded per Case I, Standard Drawing No. 452, unless otherwise specified on the plans.
4. Location of wyes and laterals to be determined in the field at the direction of the owner.
5. All stubs and laterals to be constructed in accordance with Standard Drawing No. 562. Stubs shall be plugged and capped.
6. Manhole frames and covers to be set as noted in profiles by sewer Contractor after final paving of streets.
7. Laterals are to be 4" V.C.P. and extended to property line.
8. Prior to construction of sewer, Contractor is to expose the existing sewer and contact the Engineer for verification of existing location and elevation.
9. Plugs shall be installed, and will remain in place, where the new sewer connects with the existing sewer until such time as the new sewer is accepted by the City.

**NOTICE TO CONTRACTOR**

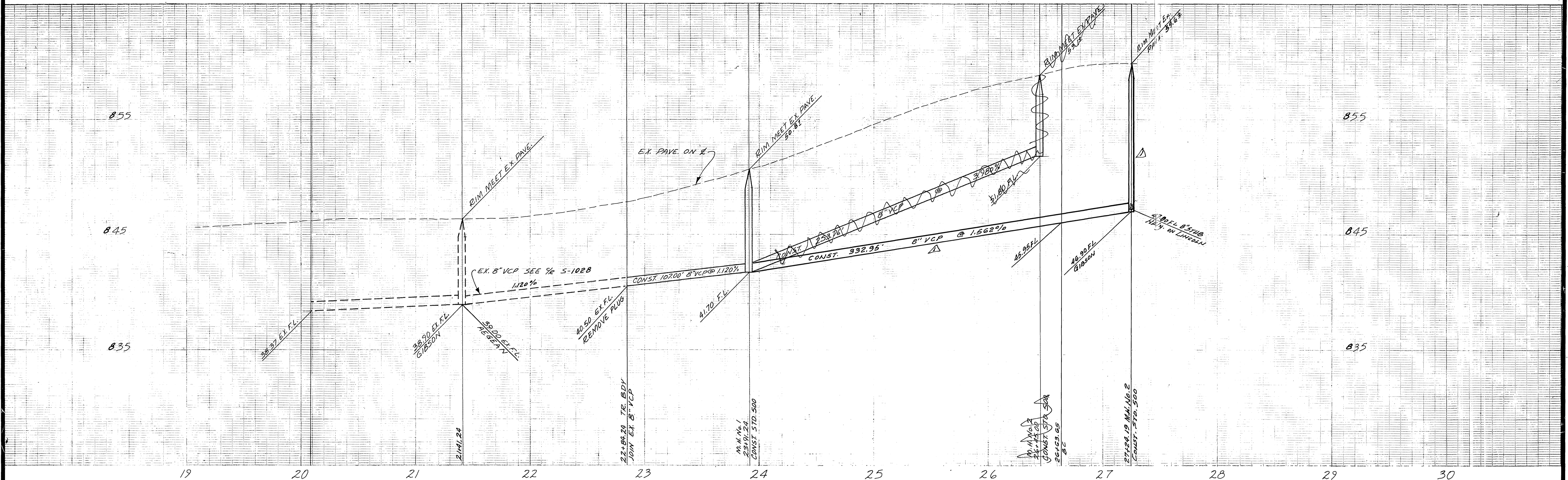
The existence and location of underground utility pipes or structures shown on these plans are obtained by a search of the available records. To the best of our knowledge, there are no existing utilities except as shown on these plans.

The Contractor is required to take due precautionary measures to protect the utility lines shown and any other lines not of record or not shown on these plans.

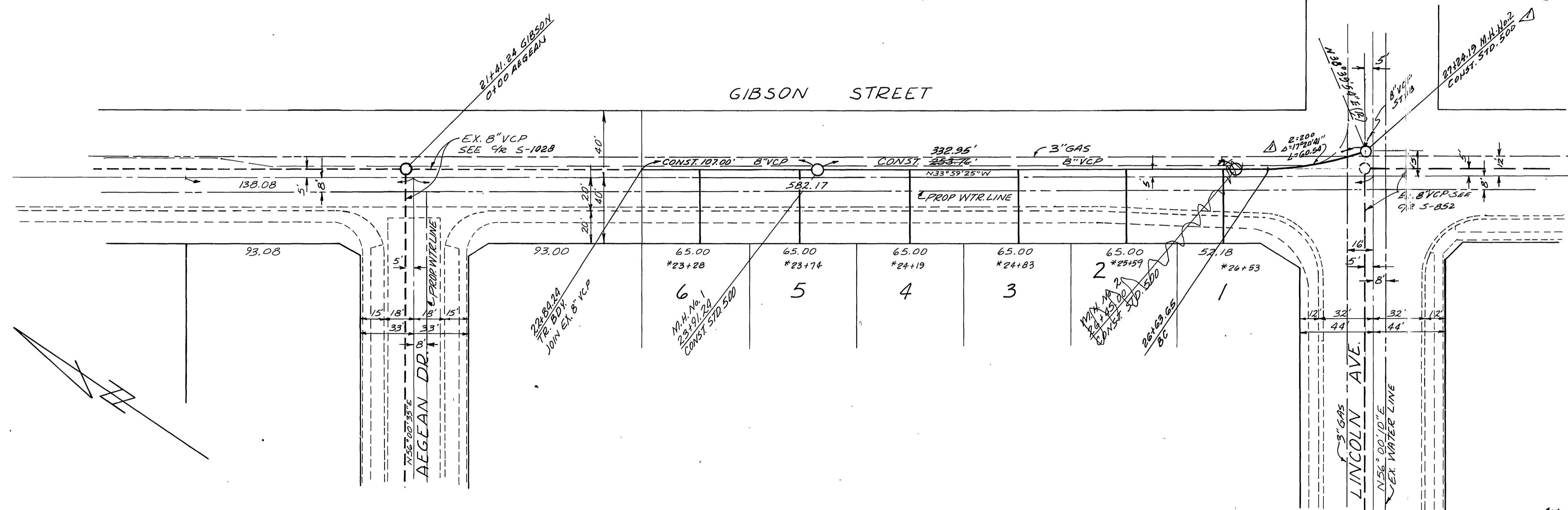
**INDEX MAP**  
Scale 1" = 50'

**BENCH MARK ELEV. 881.950**  
Top of Brass Disk E-4-B (capped) at the intersection of Van Buren Blvd and Victoria Ave. of F.B. 735/43

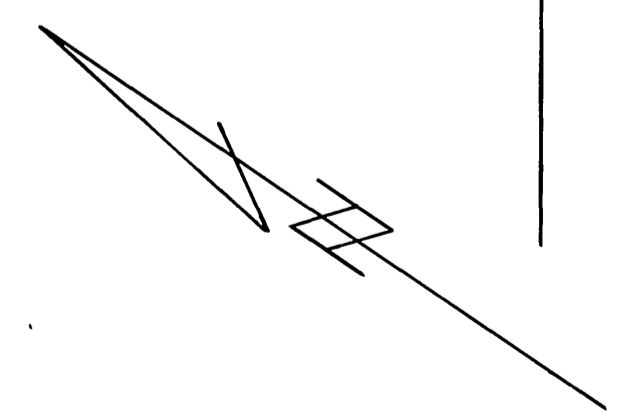
<p>ALBERT A. WEBB ASSOCIATES CIVIL ENGINEERS RIVERSIDE, CALIFORNIA</p> <p>APPROVED BY: <i>Carl N. Webb</i> DATE: 2/5/76 R.E. No. 2876</p> <p>W.O. 75-217 FOR: HUNTLEY HOUSING F.B./037</p>	<p>APPROVED BY: <i>William D. Anderson</i> DATE: 2-10-76 Chief Utilities Engineer, Water</p> <p>CITY OF RIVERSIDE, CALIFORNIA PUBLIC WORKS DEPARTMENT</p> <p>APPROVED BY: <i>William D. Anderson</i> DATE: 2/10/76 DIRECTOR OF PUBLIC WORKS</p> <p>DATE: May 7, 1976</p>	<p>INDEXED <i>W.A.</i></p> <p>ACCOUNT No. _____ DRAWING NUMBER</p> <p><b>SEWER PLAN &amp; PROFILE</b></p> <p><b>TRACT NO. 7006</b></p> <p><b>INDEX MAP</b></p> <p>SHEET 1 OF 3</p> <p>75-217-B</p>
<p>DESIGNED BY: <i>W.G.B.</i> DRAWN BY: <i>W.G.B.</i> CHECKED BY: <i>W.G.B.</i></p>		



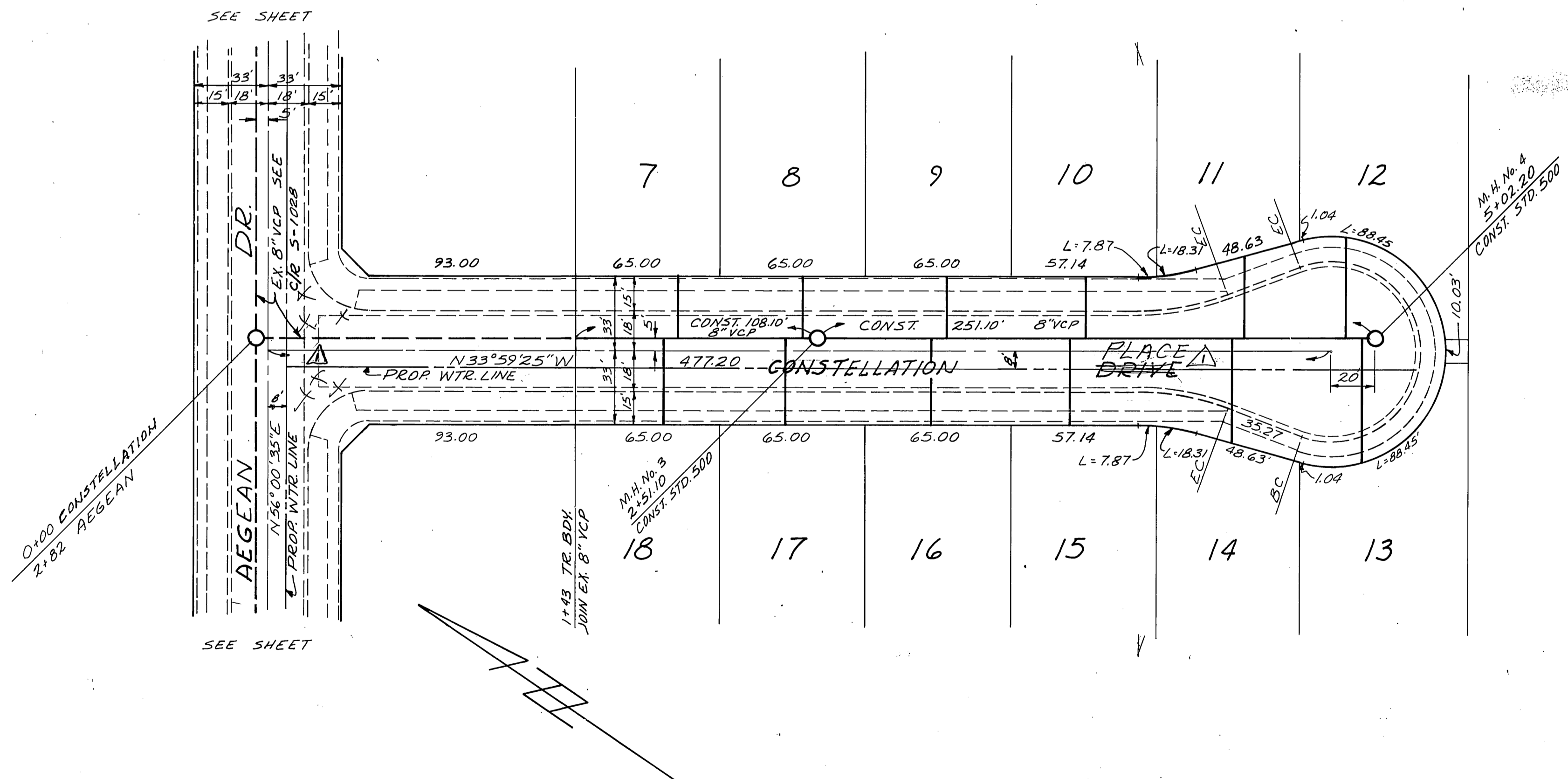
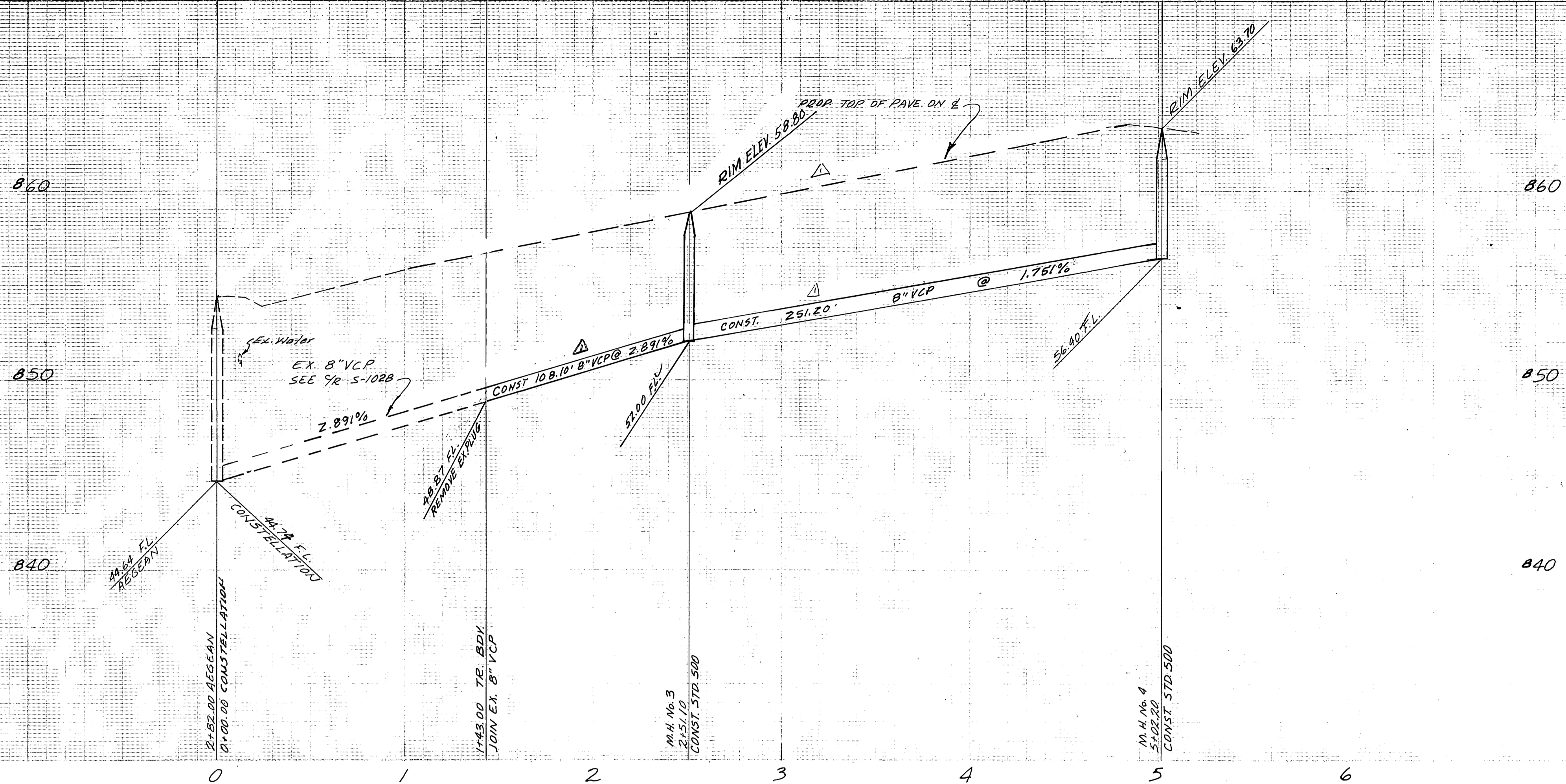
**BENCH MARK ELEV. 881.950**  
 TOP OF BRASS DISK E.A.-B (CAPPED) AT THE  
 INTERSECTION OF VAN BUREN BLVD. AND  
 VICTORIA AVE. '94 F.B. 735/43



**NOTE:**  
 SEE SHEET NO. 1 FOR GENERAL NOTES.



<b>ALBERT A. WEBB ASSOCIATES</b> CIVIL ENGINEERS RIVERSIDE, CALIFORNIA APPROVED BY <i>[Signature]</i> DATE <i>4/17/76</i> R.E. No. 2876		Approved by: <i>[Signature]</i> 2-18-76 Chief Utilities Engineer, Water Date		ACCOUNT No. DRAWING NUMBER <b>5-1031</b>	
<b>CITY OF RIVERSIDE, CALIFORNIA</b> PUBLIC WORKS DEPARTMENT APPROVED BY <i>[Signature]</i> DATE <i>3/17/76</i> PARK DEPARTMENT TRAFFIC DIVISION CHIEF PUB. WKS. ENGR. <i>[Signature]</i>		<b>SEWER PLAN &amp; PROFILE</b> <b>TRACT NO. 7006</b> <b>GIBSON STREET</b>		SHEET <b>2</b> OF <b>3</b> SCALE: HORIZ. 1"=40' VERT. 1"=4' DATE <b>MAY 7, 1976</b>	
W.C. 75-217 FOR HUNTLEY HOUSING F.B. 1037		DESIGNED BY <i>[Signature]</i> DRAWN BY <i>[Signature]</i> CHECKED BY <i>[Signature]</i>		DATE <b>MAY 7, 1976</b>	



BENCH MARK ELEV. 881.950  
 TOP OF BRASS DISK EA. B (CAPPED) AT  
 THE INTERSECTION OF VAN BUREN BLVD.  
 AND VICTORIA AVE. 1/2 E.B. 735/43

NOTE:  
 SEE SHEET NO. 1 FOR GENERAL NOTES.

<b>ALBERT A. WEBB ASSOCIATES</b> CIVIL ENGINEERS RIVERSIDE, CALIFORNIA APPROVED BY: <i>[Signature]</i> DATE: 2/18/76 R.E. No. 2876 W.O. 75-217 FOR HUNTLEY HOUSING F.B. 1037	APPROVED BY: <i>[Signature]</i> DATE: 2-18-76 Chief Utilities Engineer, Water	<b>CITY OF RIVERSIDE, CALIFORNIA</b> PUBLIC WORKS DEPARTMENT		ACCOUNT NO. DRAWING NUMBER
		APPROVED BY: <i>[Signature]</i> DATE: May 7, 1976 DIRECTOR OF PUBLIC WORKS		TRACT NO. 7006 CONSTELLATION DRIVE SHEET 3 OF 3
DESIGNED BY: <i>[Signature]</i> DRAWN BY: <i>[Signature]</i> CHECKED BY: <i>[Signature]</i>		SCALE: HORIZ. 1"=40' VERT. 1"=4'		S-1031 75-217-B

see plan 5-1028  
 5 of 5