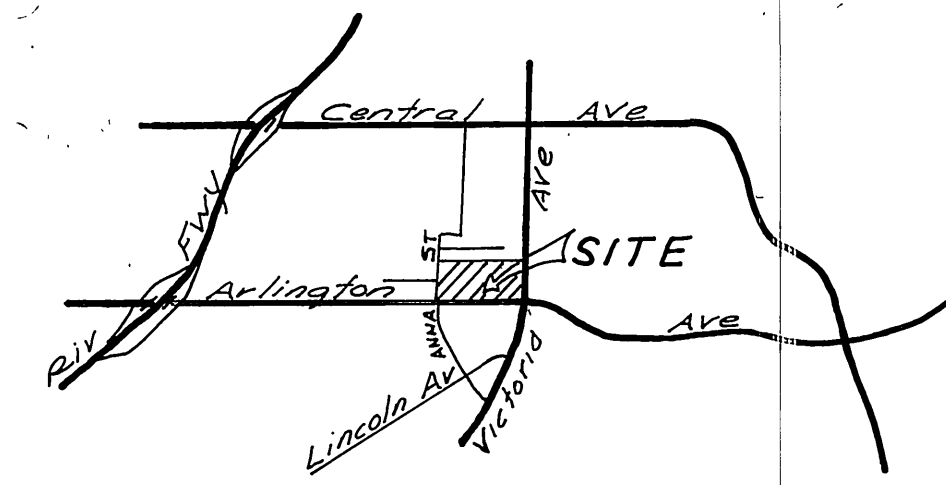


INDEX MAP
SCALE 1"=100'



LOCATION MAP

GENERAL NOTES

1. Construction shall be in accordance with the Standard Specifications for Public Works Construction 1973 Edition, and the City of Riverside Standard Drawings.
2. It shall be the responsibility of the Contractor to clear the Right of Way in accordance with the provisions of law as it affects each utility including irrigation lines and appurtenances and at no cost to the City.
3. Pipe shall be bedded per Case I, Standard Drawing No. 452, unless otherwise specified on the plans.
4. Location of wyes and laterals to be determined in the field at the direction of the owner.
5. All stubs and laterals to be constructed in accordance with Standard Drawing No. 562. Stubs shall be plugged and capped.
6. Manhole frames and covers to be set as noted in profiles by sewer Contractor after final paving of streets.
7. Laterals are to be 4" V.C.P. and extended to property line.
8. Prior to construction of sewer Contractor is to expose the existing sewer and contact the Engineer for verification of existing location and elevation.
9. Plugs shall be installed and will remain in place where the new sewer connects with the existing sewer until such time as the new sewer is accepted by the City.

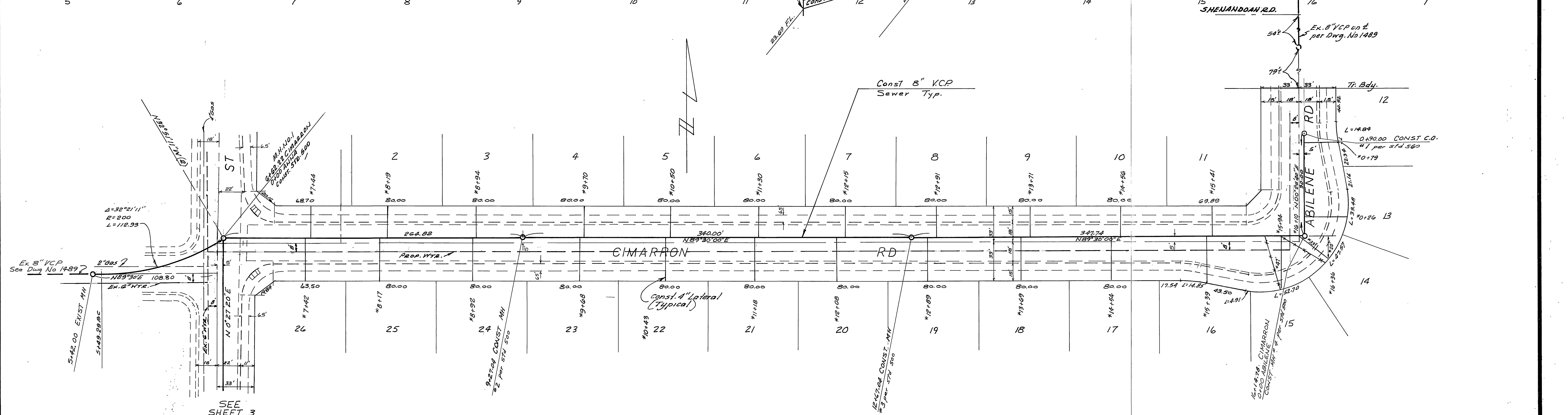
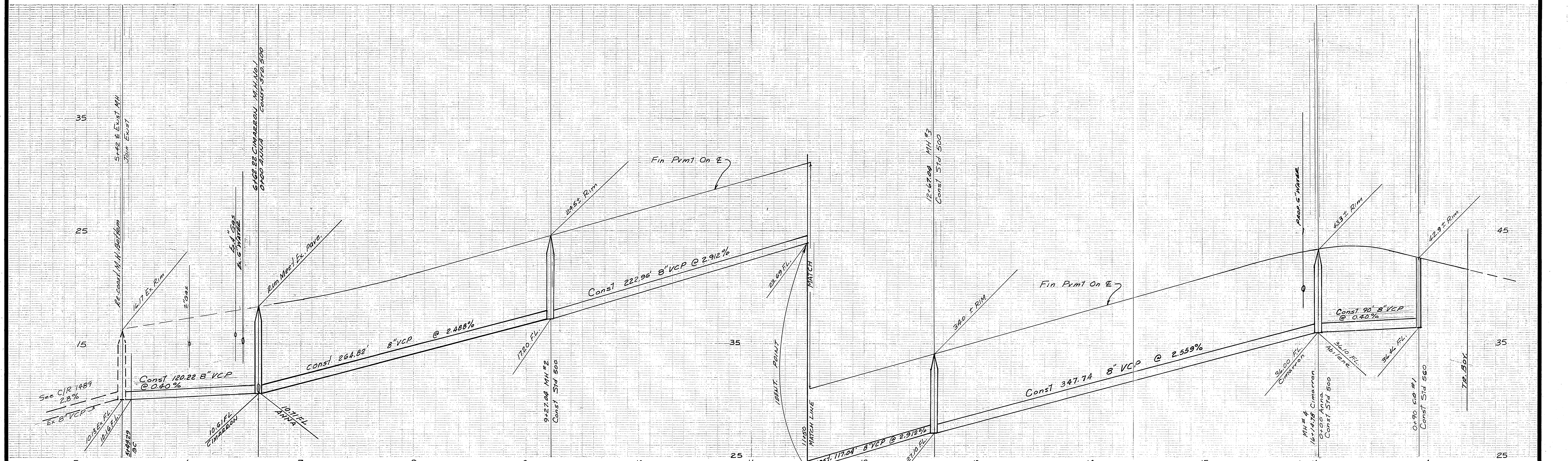
NOTICE TO CONTRACTOR

The existence and location of underground utility pipes or structures shown on these plans are obtained by a search of the available records. To the best of our knowledge there are no existing utilities except as shown on these plans.

The Contractor is required to take due precautionary measures to protect the utility lines shown and any other lines not of record or not shown on these plans.

BENCH MARK G 7-A ELEV. 969.528
 1/2" nail & lag in East wing of Catch Basin in South curb of Arlington Ave. 55' East of E of Victoria Ave.

<p>ALBERT A. WEBB ASSOCIATES CIVIL ENGINEERS RIVERSIDE, CALIFORNIA</p> <p>APPROVED BY: <i>Albert A. Webb</i> DATE: 3/25/76 R.E. No. 2876</p>	<p>CITY OF RIVERSIDE, CALIFORNIA PUBLIC WORKS DEPARTMENT</p> <p>APPROVED BY: <i>[Signature]</i> DATE: 4-12-76 Chief Utilities Engineer - Water</p>	<p>SEWER PLAN AND PROFILE TRACT NO 7174 INDEX SHEET</p>	<p>ACCOUNT No. DRAWING NUMBER 5-1033 SHEET 1 OF 4 75-246-B</p>
<p>DESIGNED BY: REC DRAWN BY: LRM CHECKED BY: [Signature]</p>		<p>DATE: 5-13-76 SCALE: AS NOTED</p>	



SEE SHEET 3
ANNA

BENCH MARK G7A ELEV 963.928
PK nail flag in East wing of Catch Basin in South curb of Abilene Ave. 35' East of E of Victoria Ave.

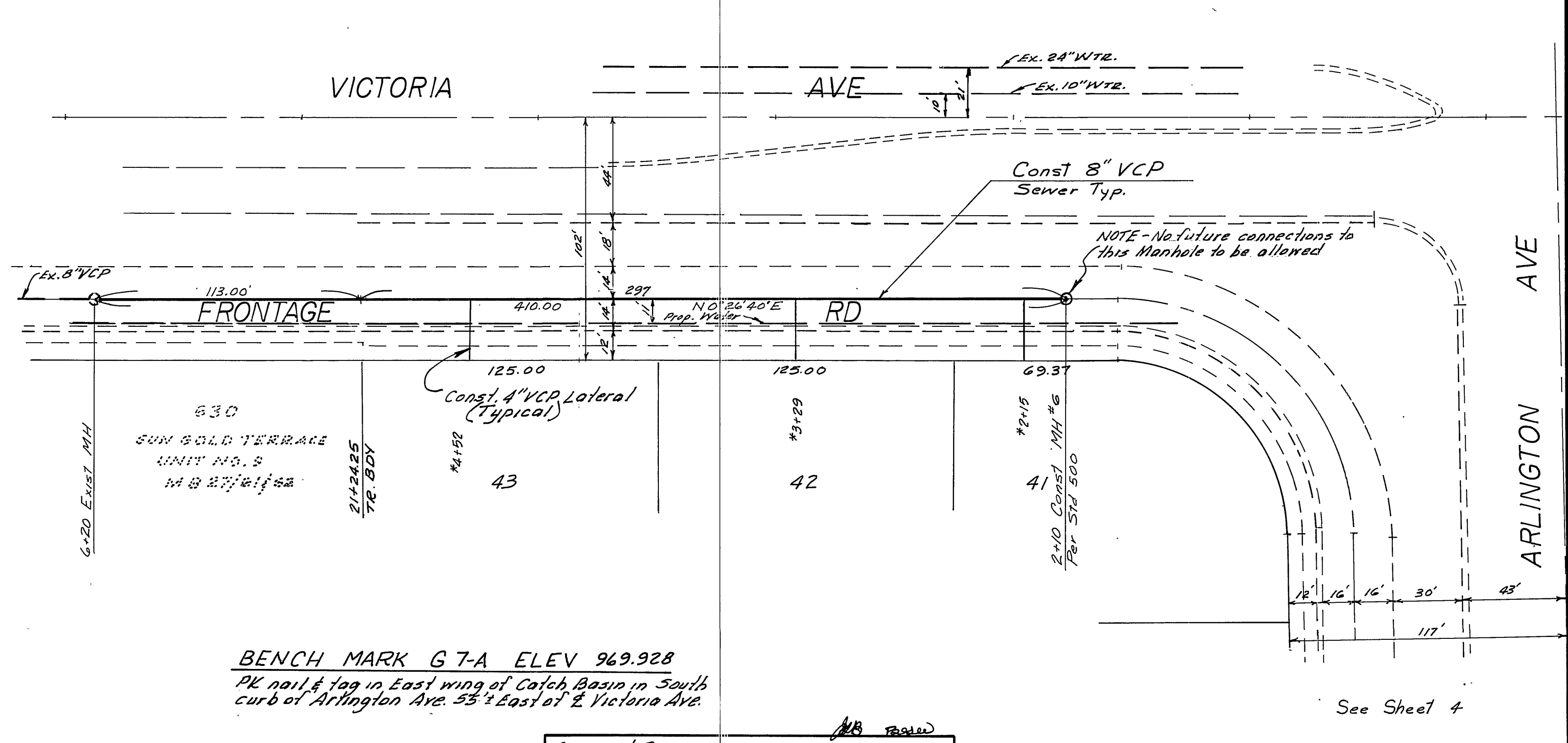
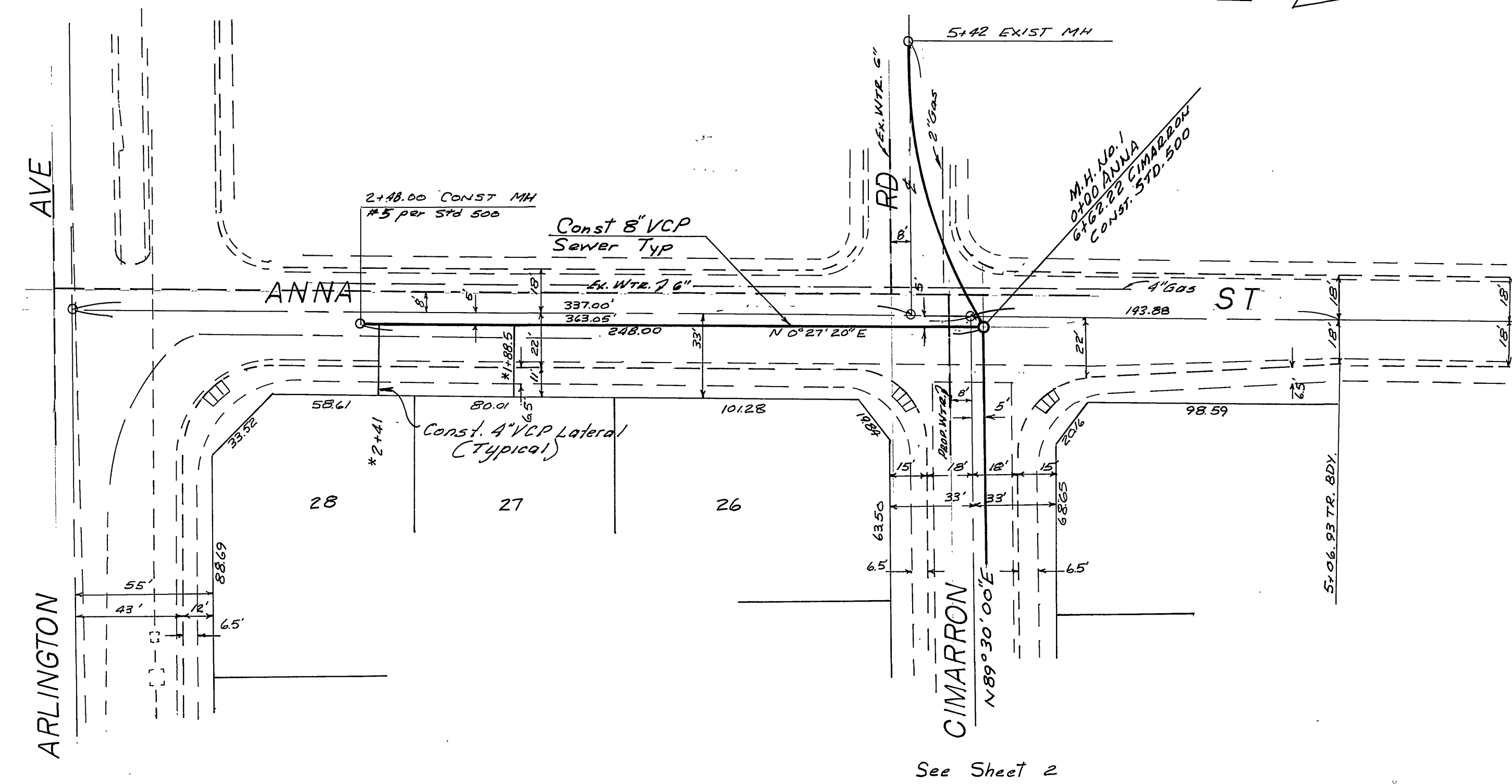
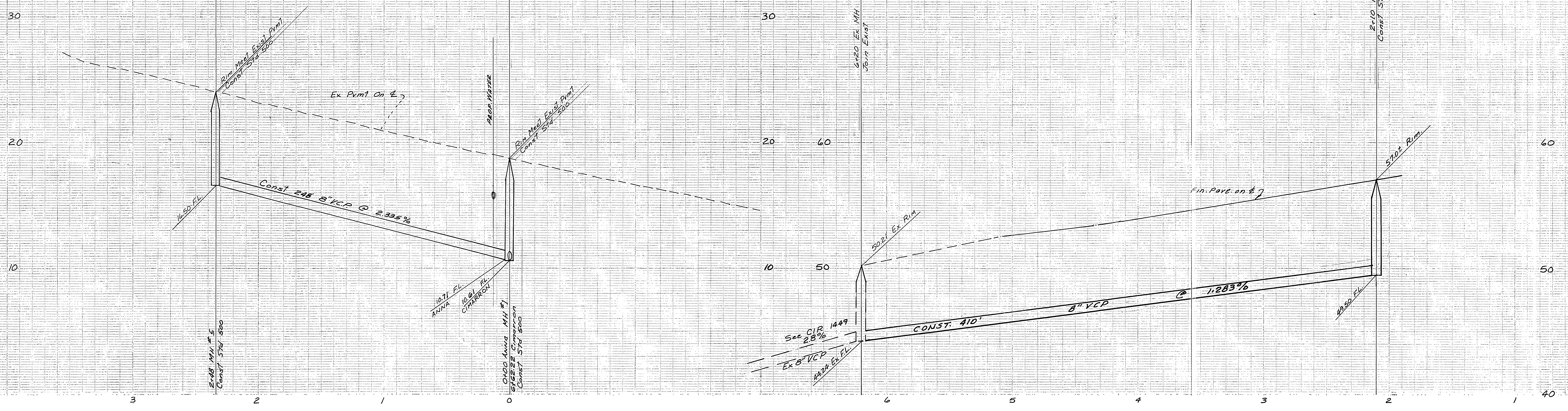
ALBERT A. WEBB ASSOCIATES
CIVIL ENGINEERS
RIVERSIDE, CALIFORNIA
APPROVED BY: *Ant N. Wall* DATE 3/25/76
R.E. No. 2872

NO.	REVISIONS	APPR.	DATE

APPROVED BY: *Walter Hillman* DATE 4-12-76
Chief Utilities Engineer - Water
CITY OF RIVERSIDE, CALIFORNIA
PUBLIC WORKS DEPARTMENT
APPROVED BY: *Walter Hillman* DATE 4-12-76
PRINCIPAL ENGINEER
PARK DEPARTMENT
TRAFFIC DIVISION
DIRECTOR OF PUBLIC WORKS
CHIEF PUB. WKS. ENGR. DATE 5-3-76

*AS BUILT 8-76 KET
SEWER PLAN AND PROFILE
TRACT 7174
CIMARRON RD
& ABILENE RD
SCALE: HORIZ 1"=40' VERT 1"=4'

ACCOUNT No.
DRAWING NUMBER
5-1033
SHEET 2 OF 4
75-246-B



BENCH MARK G-7A ELEV 969.928
 PK nail & flag in East wing of Catch Basin in South
 curb of Arlington Ave. 53' East of E Victoria Ave.

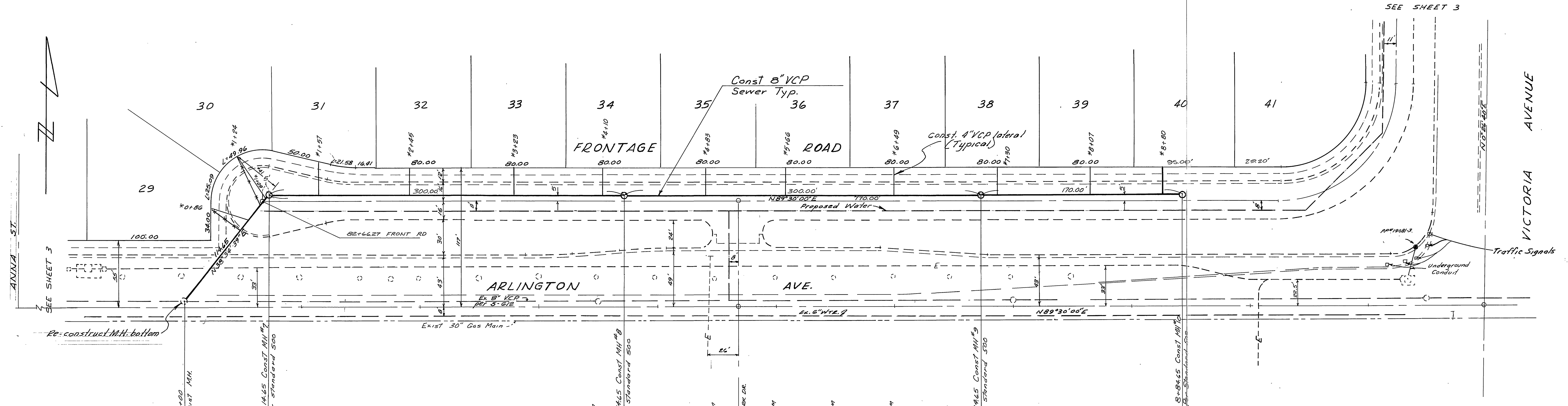
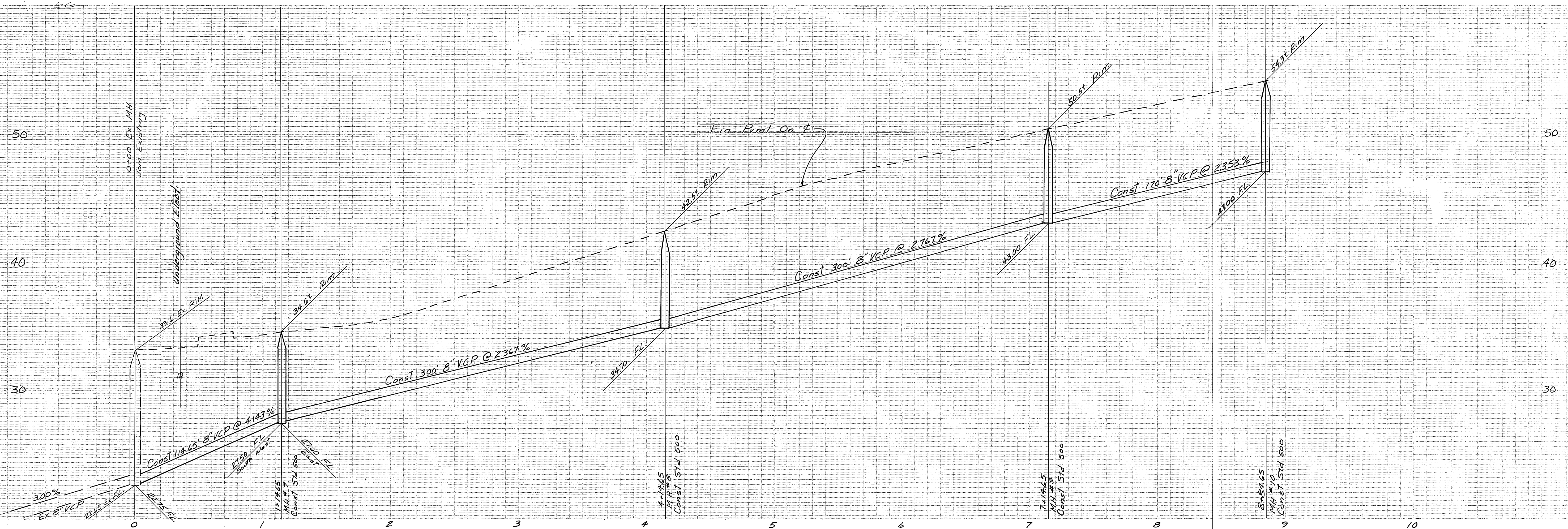
ALBERT A. WEBB ASSOCIATES
 CIVIL ENGINEERS
 RIVERSIDE, CALIFORNIA
 APPROVED BY: *[Signature]* DATE 3/25/76
 R.E. No. 2876
 W.O. 75-246 FOR KAUFMAN & BOARD F.B. 1038

MARK	REVISIONS	APPR.	DATE

Approved By: *[Signature]* 4/12-76
 Chief Utilities Engineer - Water
CITY OF RIVERSIDE, CALIFORNIA
PUBLIC WORKS DEPARTMENT
 APPROVED BY: *[Signature]* DATE 5-13-76
 PRINCIPAL ENGINEER
 PARK DEPARTMENT
 TRAFFIC DIVISION
 CHIEF PUB. WKS. ENGR. 5-13-76

SEWER PLAN AND PROFILE
 TRACT NO. 7174
 ANNA STREET
 VICTORIA AVE. FRONTAGE ROAD
 SCALE: HORIZ 1"=40' VERT 1"=4'

ACCOUNT No.
 DRAWING NUMBER
5-1033
 SHEET 3 OF 4
 75-246-B



BENCH MARK G-7-A ELEV 963.928
 PK nail 1/2" dia in East wing of Catch Basin in South
 curb of Arlington Ave. 55' East of E of Victoria Ave.

ALBERT A. WEBB ASSOCIATES
 CIVIL ENGINEERS
 RIVERSIDE, CALIFORNIA
 APPROVED BY: *E. H. Webb* DATE 3/25/76
 R.E. No. 2876

MARK	REVISIONS	APPR.	DATE

Approved By: *Walter J. ...*
 Chief Utilities Engineer - Water
 Date: 4-12-76

CITY OF RIVERSIDE, CALIFORNIA
 PUBLIC WORKS DEPARTMENT
 APPROVED BY: *[Signature]*
 PRINCIPAL ENGINEER
 DATE: 5-13-76

ACCOUNT No.
 DRAWING NUMBER
S-1033
 SHEET 4 OF 4
 75-246-B