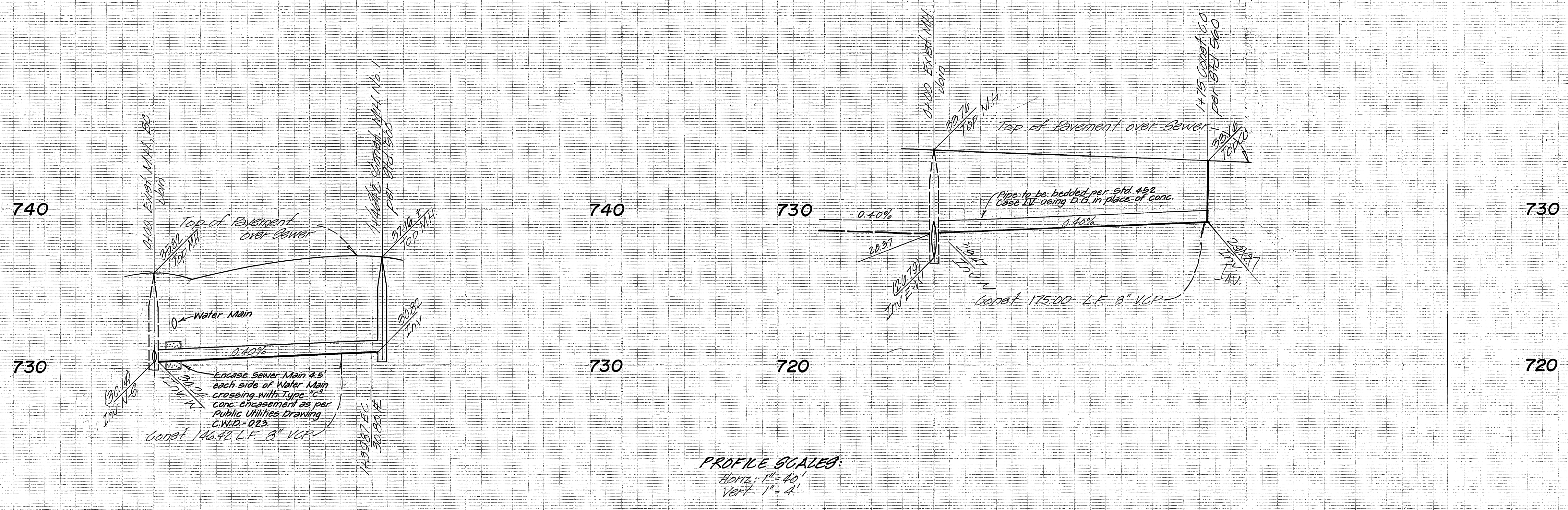
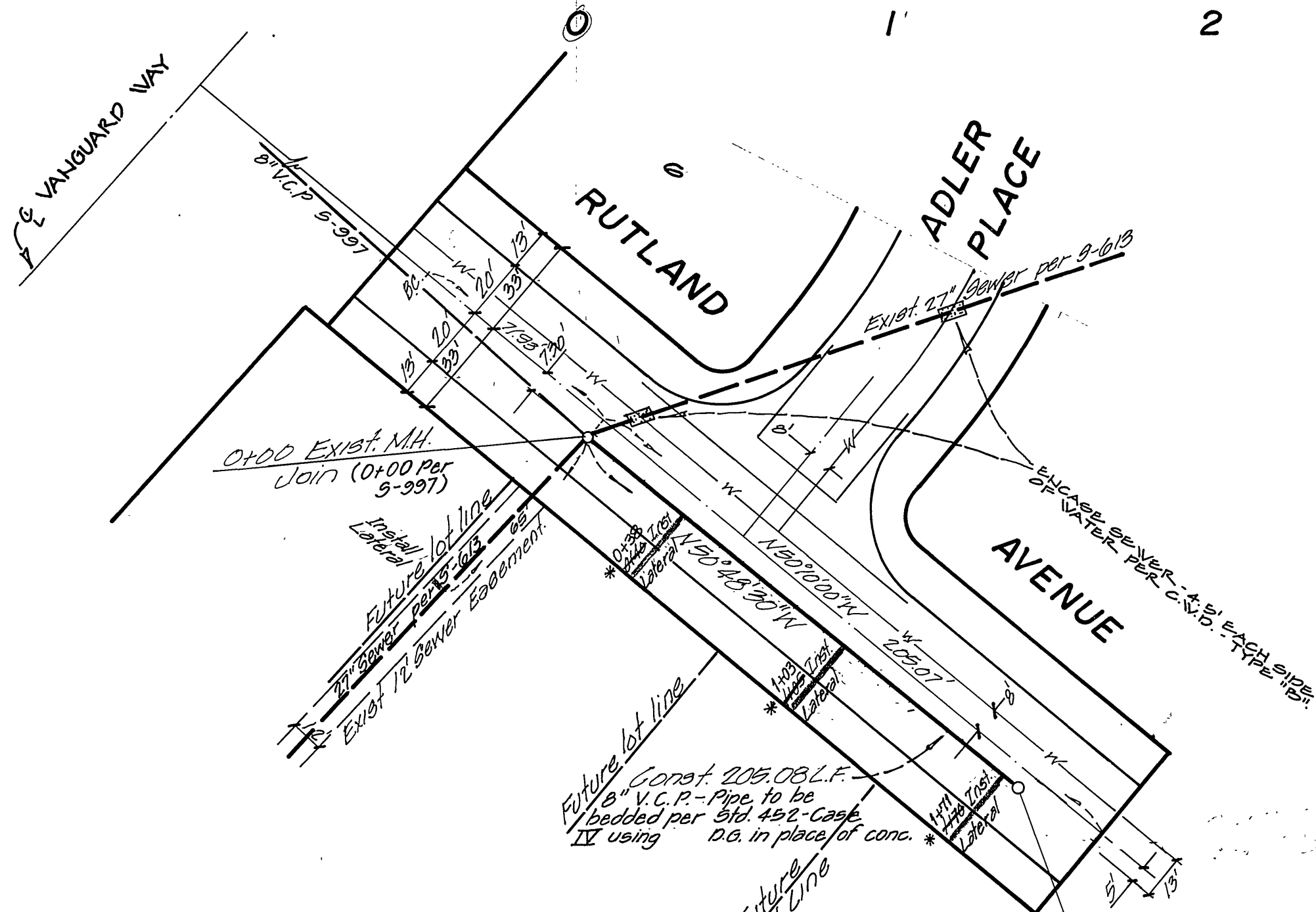
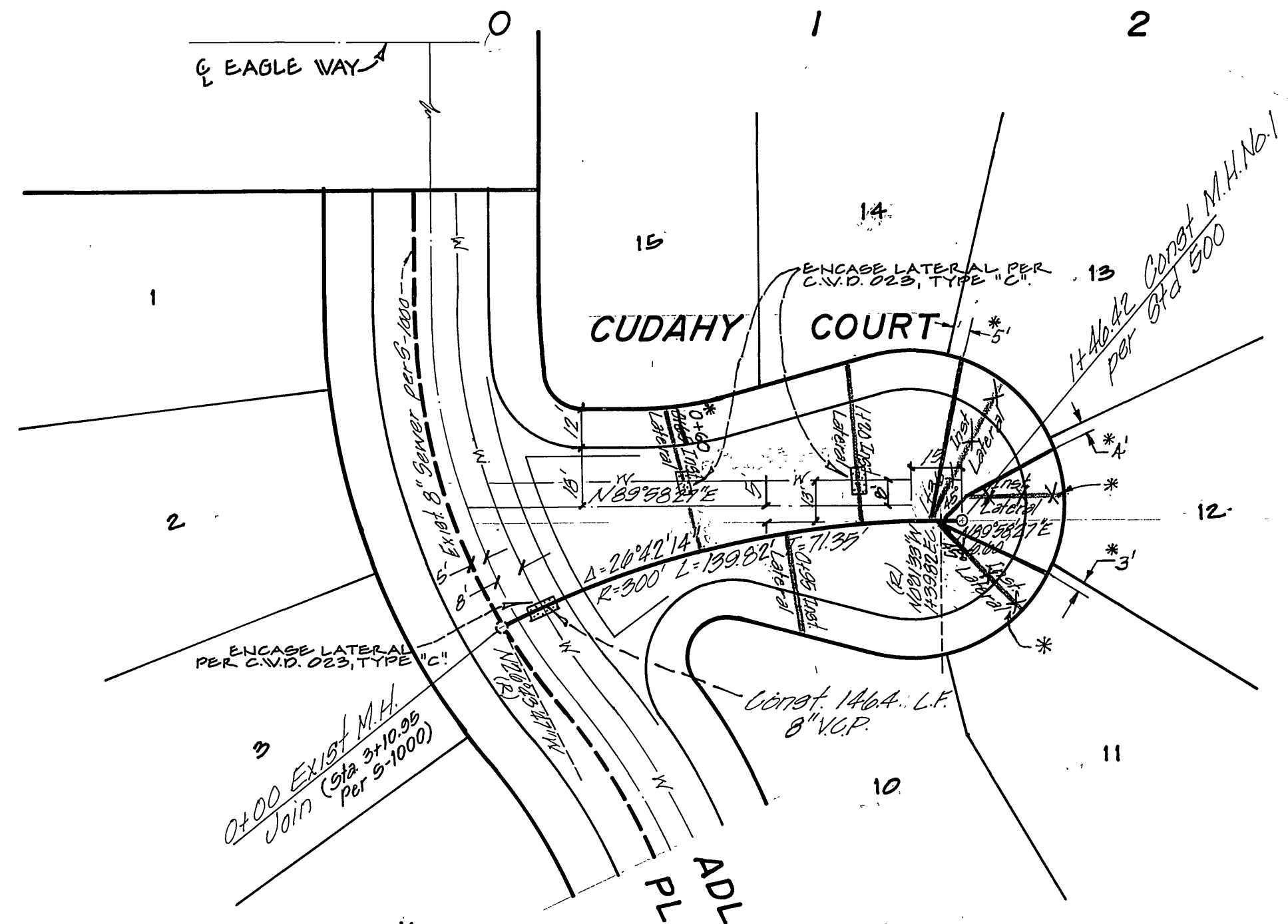


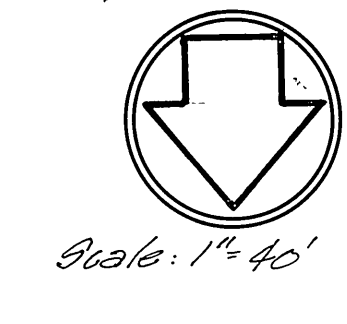
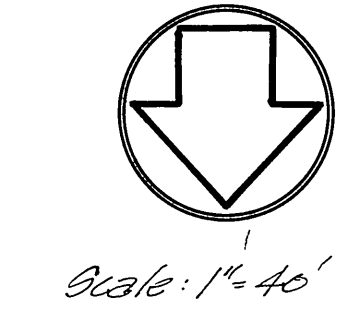
BENCH MARK:  
 FK. nail in center of Northeast curb return  
 @ Arlington and Great Avenues.  
 Elev. = 759.23 F.B. 7/24/41



PROFILE SCALES:  
 Horiz. 1" = 40'  
 Vert. 1" = 4'



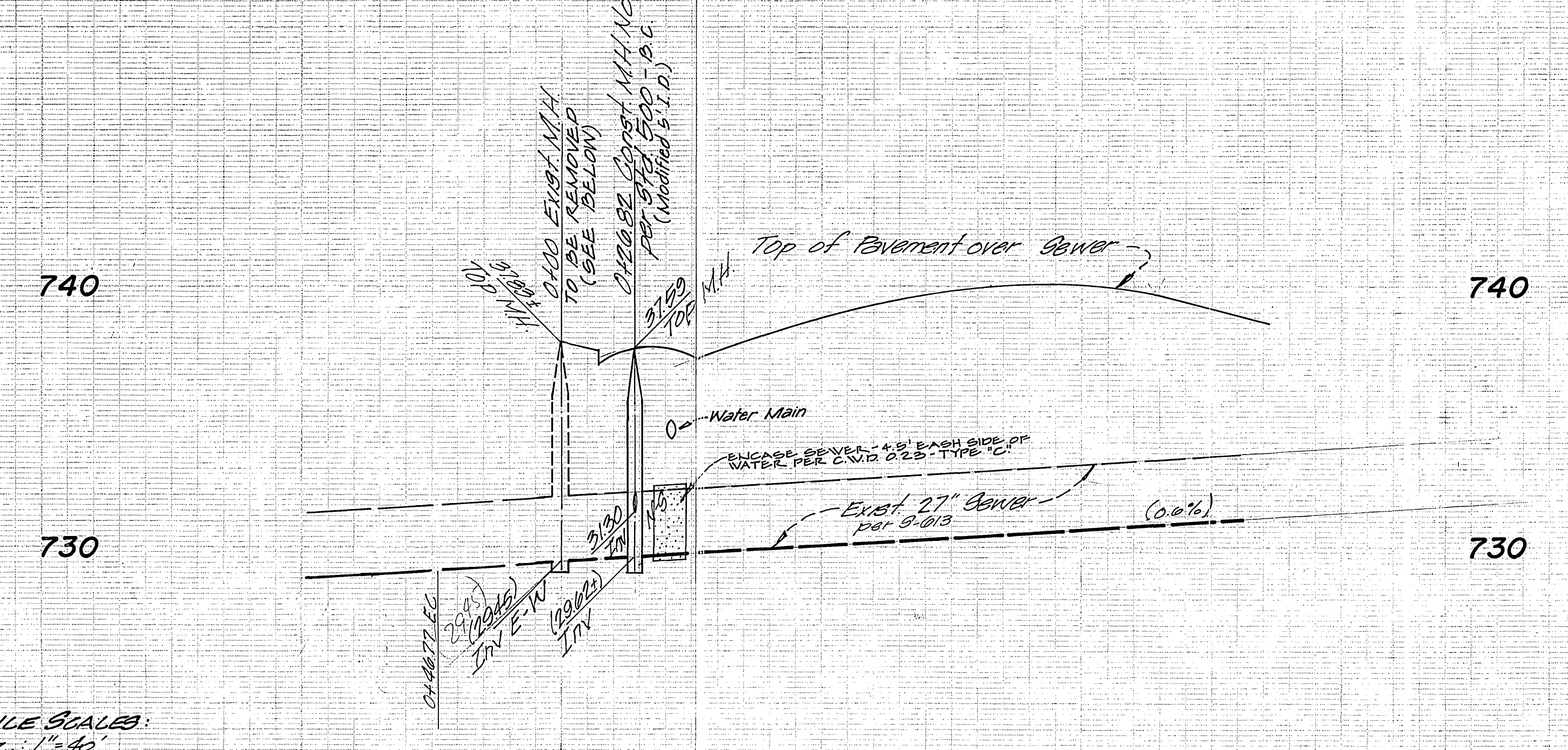
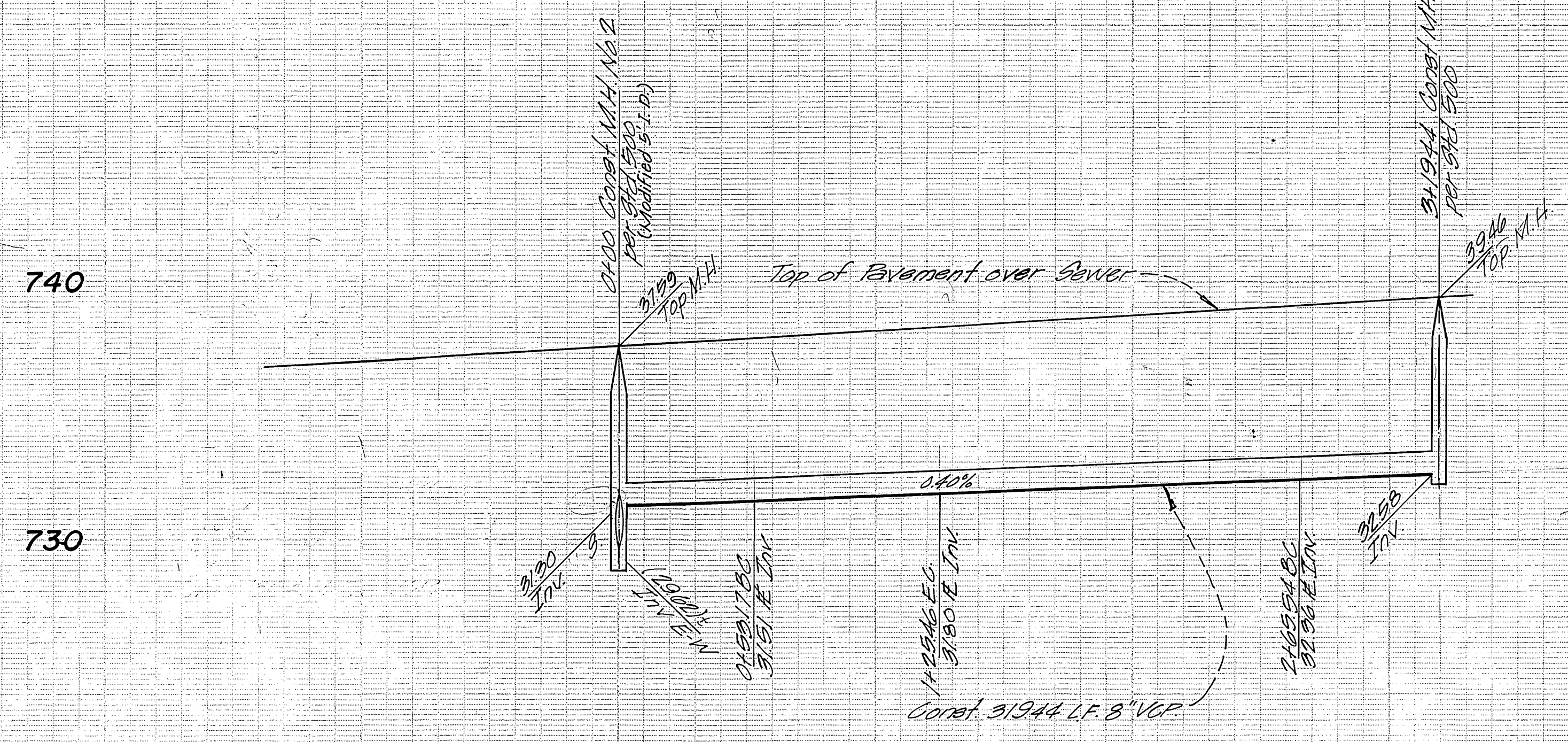
N.O.T.E.: LOTS 15 & 14 - ENCASE SEWER LATERAL 4.5' EACH SIDE OF WATERLINE WITH TYPE 'C' CONC. ENCASUREMENT AS PER PUBLIC UTILITY DRAWING C.W.D. 023 OR INSTALL CAST IRON PIPE 4.5' EACH SIDE OF WATER MAIN.



- GENERAL NOTES:**
1. Construction shall be in accordance with the Standard Specifications for Public Works Construction, 1978 Edition and the City of Riverside Standard Drawings.
  2. It shall be the responsibility of the Contractor to clear the Right of Way in accordance with the Provisions of Law as it affects each utility, irrigation line appurtenances and at no cost to the City.
  3. Laterals to be 4" and extended to the Property Line. Where laterals are being connected to the ex. 21" sewer, the 21" pipe will be core drilled and saddled.
  4. Prior to construction of sewer, the Contractor is to expose existing sewer and contact the Engineer for verification of existing elevations.
  5. The Sewer Contractor is to adjust manhole covers to final grade after paving is completed.
  6. A plug shall be installed and will remain in place where the new sewer connects with the existing sewer until such time that the new sewer is accepted by the City.
  7. Contractor shall modify exist. manhole invert to rechannel flow from new main.

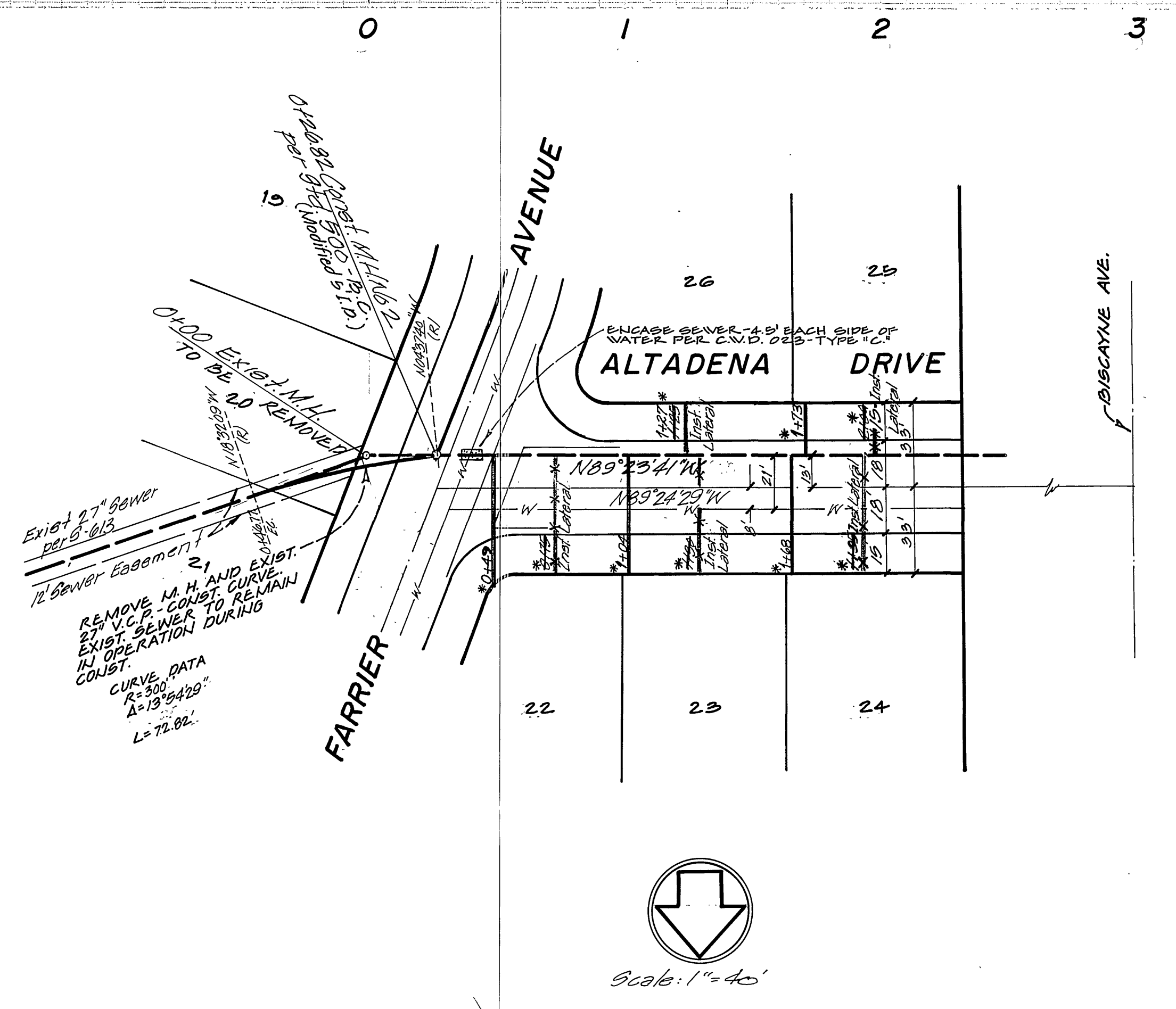
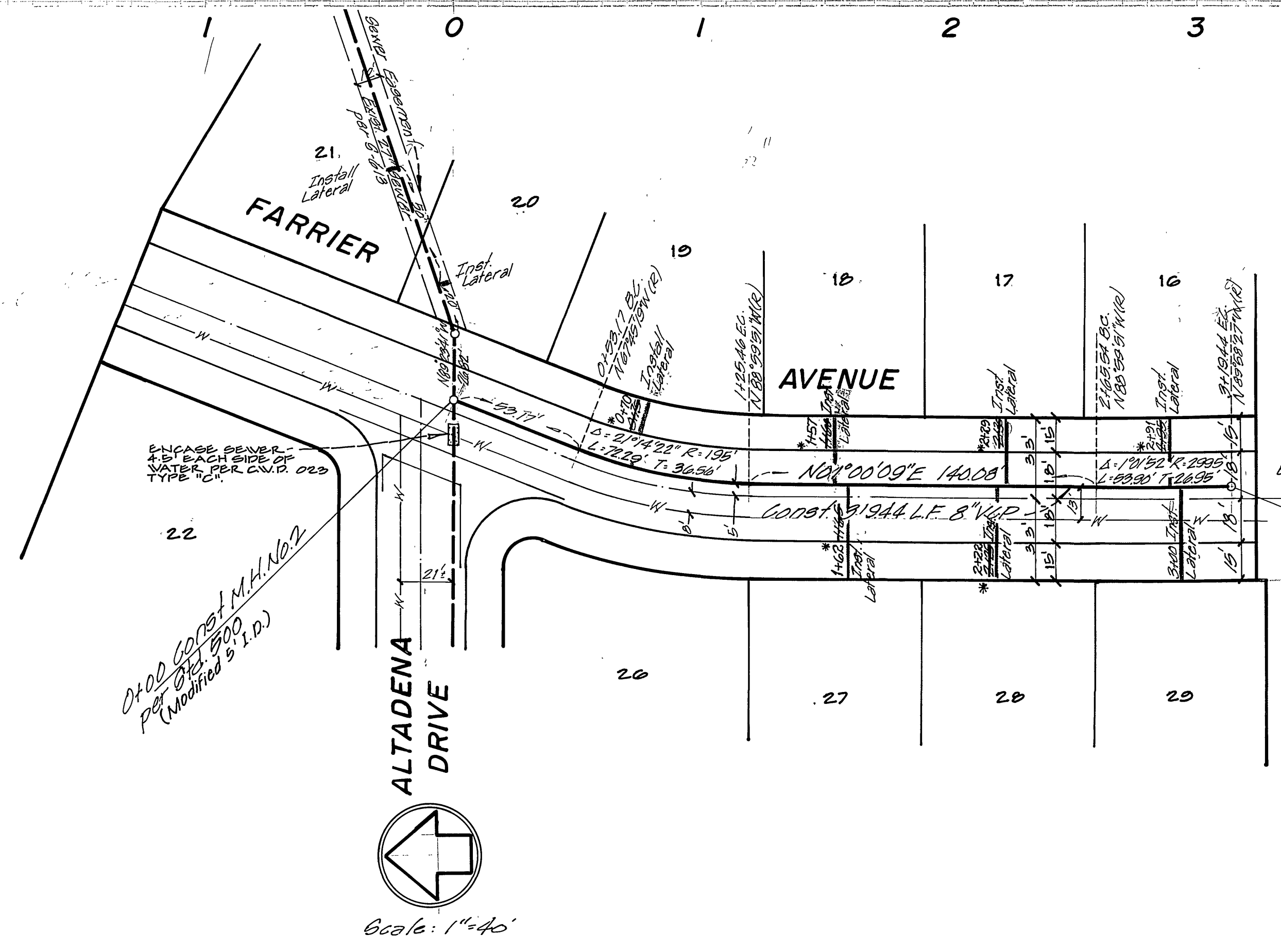
APPROVED BY: DATE: MAY 15, 1976  CHIEF UTILITIES ENGINEER, WATER		<b>MAXWELL, BROWN &amp; MULLINS</b> planning engineering surveying SAN BERNARDINO, CALIFORNIA PHILIP E. BROWN C.E. 18679		I.O. F.B. CHECKED BY: DRAWN BY:	CITY OF RIVERSIDE, CALIFORNIA PUBLIC WORKS DEPARTMENT APPROVED BY: PRINCIPAL ENGINEER PARK DEPARTMENT TRAFFIC DIVISION CHIEF PUB. WKS. ENGR.	DATE: 5-24-76	SEWER PLANS <b>TRACT 5104-5</b> ADLER PLACE CUDAHY COURT SCALE: Horiz. 1" = 40' ; Vert. 1" = 4'	ACCOUNT No. DRAWING NUMBER <b>S-1034</b> SHEET 1 OF 2
---	--	---	--	--	--	---------------	---	--

BENCH MARK:  
 PK nail in center of Northeast curb return  
 @ Arlington & Grand Avenue  
 Elev. = 759.23 F.B. 704/41



PROFILE SCALES:  
 Horiz.: 1" = 40'  
 Vert.: 1" = 4'

SEE SHEET ONE FOR  
 GENERAL NOTES



APPROVED BY:  
 DATE MAY 18, 1976  
*Wally Hyman*  
 CHIEF UTILITIES ENGINEER, WATER

**MAXWELL, BROWN & MULLINS**  
 planning engineering surveying  
 SAN BERNARDINO, CALIFORNIA  
 PHILIP E. BROWN C.E. 18679  
 DATE 12-10-75

J.O.  
 F.B.  
 CHECKED BY:  
 DRAWN BY:

MARK	REVISIONS	APPR.	DATE

CITY OF RIVERSIDE, CALIFORNIA  
 PUBLIC WORKS DEPARTMENT  
 APPROVED BY: *[Signature]*  
 BY DATE: 5/19  
 PARK DEPARTMENT  
 TRAFFIC DIVISION  
 CHIEF PUB. WKS. ENGR. 5-24

SEWER PLANS  
**TRACT 5104-5**  
 ALTADENA DRIVE  
 FARRIER AVENUE  
 SCALE: Horiz: 1" = 40' Vert: 1" = 4'

\*AS BUILT THIS 95 RUM  
 ACCOUNT No.  
 DRAWING NUMBER  
**S-1034**  
 SHEET 2 OF 2