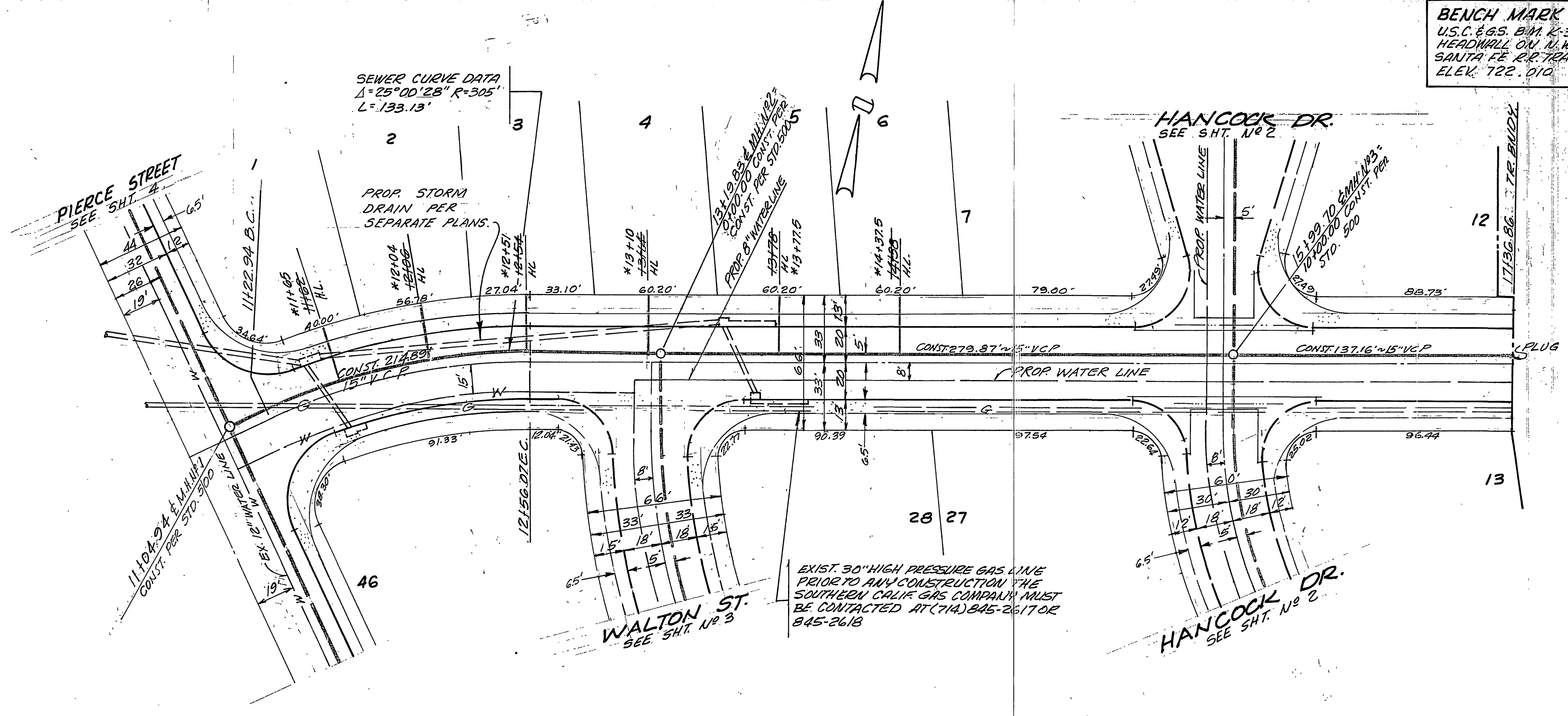


BENCH MARK
 U.S.C. & G.S. B.M. #38 1924 DISK IN
 HEADWALL ON N.W. COR. FULLMOORE &
 SANTA FE R.R. TRACKS FB 70613A
 ELEV. 722.010

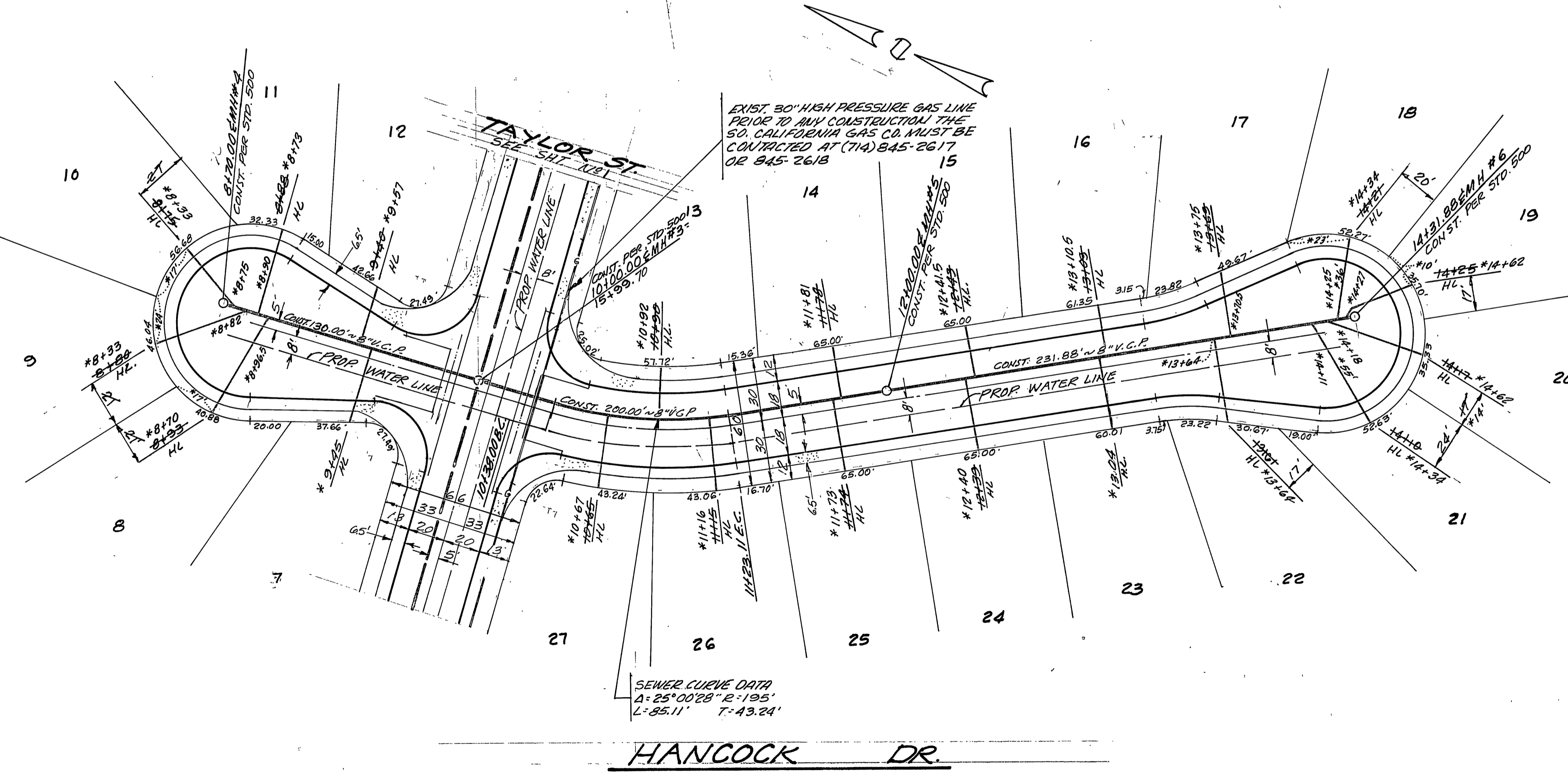
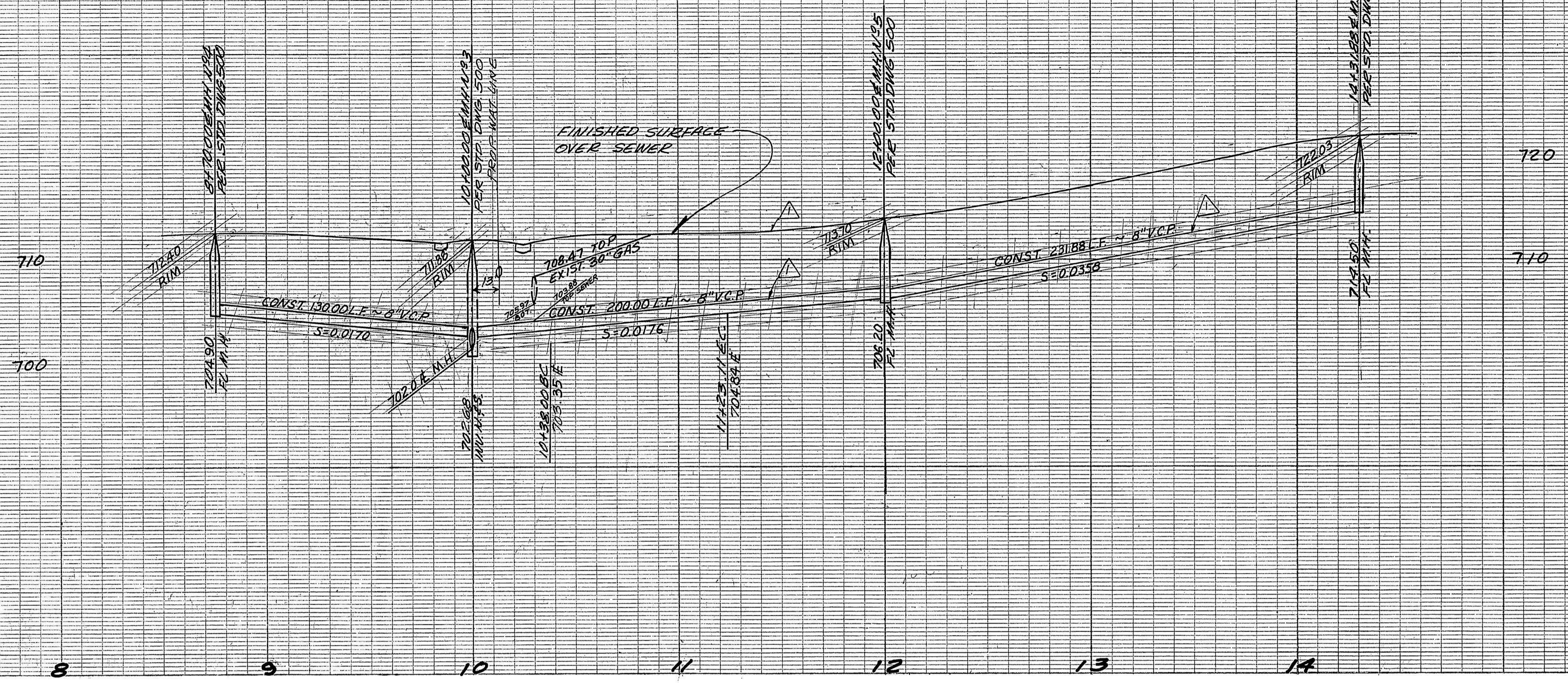


- GENERAL NOTES**
- CONSTRUCTION SHALL BE IN ACCORDANCE WITH STANDARD SPECIFICATION FOR PUBLIC WORKS CONSTRUCTION 1976 EDITION AND CITY OF RIVERSIDE STD DWG.
 - IT SHALL BE THE RESPONSIBILITY OF THE CONTRACTOR TO CLEAR THE RIGHT OF WAY OF OBSTACLES AND ADJUSTMENTS AND AT HIS COST TO THE CITY.
 - LOCATION OF NIVES AND LATERALS TO BE DETERMINED AT THE DIRECTION OF THE OWNER.
 - MANHOLE FRAMES AND COVERS TO BE SET TO PROPOSED PAVEMENT GRADES.
 - LATERALS ARE 4" AND EXTEND TO PROPERTY LINE.
 - PRIOR TO CONSTRUCTION OF SEWER CONTRACTOR IS TO EXPOSE EXISTING SEWER AND CONTACT ENGINEER FOR VERIFICATION OF EXISTING ELEVATION.
 - CONTRACTOR SHALL MAINTAIN TRAFFIC IN BOTH DIRECTIONS ON PIERCE ST. AT ALL TIMES DURING CONSTRUCTION.
 - THE SEWER CONTRACTOR SHALL ADJUST MANHOLES TO FINAL GRADES AFTER PAVING IS COMPLETED.

NOTICE TO CONTRACTOR

THE EXISTENCE AND LOCATION OF ANY UNDERGROUND UTILITY PIPES OR STRUCTURES SHOWN ON THESE PLANS ARE OBTAINED BY A SEARCH OF AVAILABLE RECORDS TO THE BEST OF OUR KNOWLEDGE THERE ARE NO EXISTING UTILITIES EXCEPT AS SHOWN ON THESE PLANS. THE CONTRACTOR IS REQUIRED TO TAKE PRECAUTIONARY MEASURES TO PROTECT THE UTILITY LINES SHOWN AND OTHER LINES NOT OF RECORD OR NOT SHOWN ON THESE PLANS.

APPROVED BY: CHIEF UTILITIES ENGINEER, WATER DATE 4-14-76	 PAUL H. BARROWS R.C.E. 15857 DATE 9/3/74	 VTC CONSULTING, INC. ENGINEERS, ARCHITECTS, PLANNERS AND CONSTRUCTION MANAGERS PREPARED UNDER THE SUPERVISION OF	CITY OF RIVERSIDE, CALIFORNIA DEPARTMENT OF PUBLIC WORKS	*AS BUILT 6-77 KBT	INDEXED HD
				APPROVED BY: DIRECTOR OF PUBLIC WORKS DATE 10/15/76	SEWER PLAN AND PROFILE TAYLOR ST. TRACT NO 6756-1
DESIGNED BY: DRAWN BY: CHECKED BY: BDM		APPROVED BY: OFFICE ENGINEER DATE 4/20/76 PARK DEPARTMENT TRAFFIC DIVISION ASSISTANT CITY ENG.		HORIZ. SCALE: 1" = 40' VERT. SCALE: 1" = 8'	



BENCH MARK
 U.S.C. E.G.S. B.M. K-38 1924 DISK IN
 HEADWALL ON N.W. COR. FILLMORE &
 SANTA FE R.R. TRACES FB 706/34
 ELEV. 722.010

SEWER CURVE DATA
 Δ: 25°00'28" E 195'
 L: 85.11' T: 43.24'

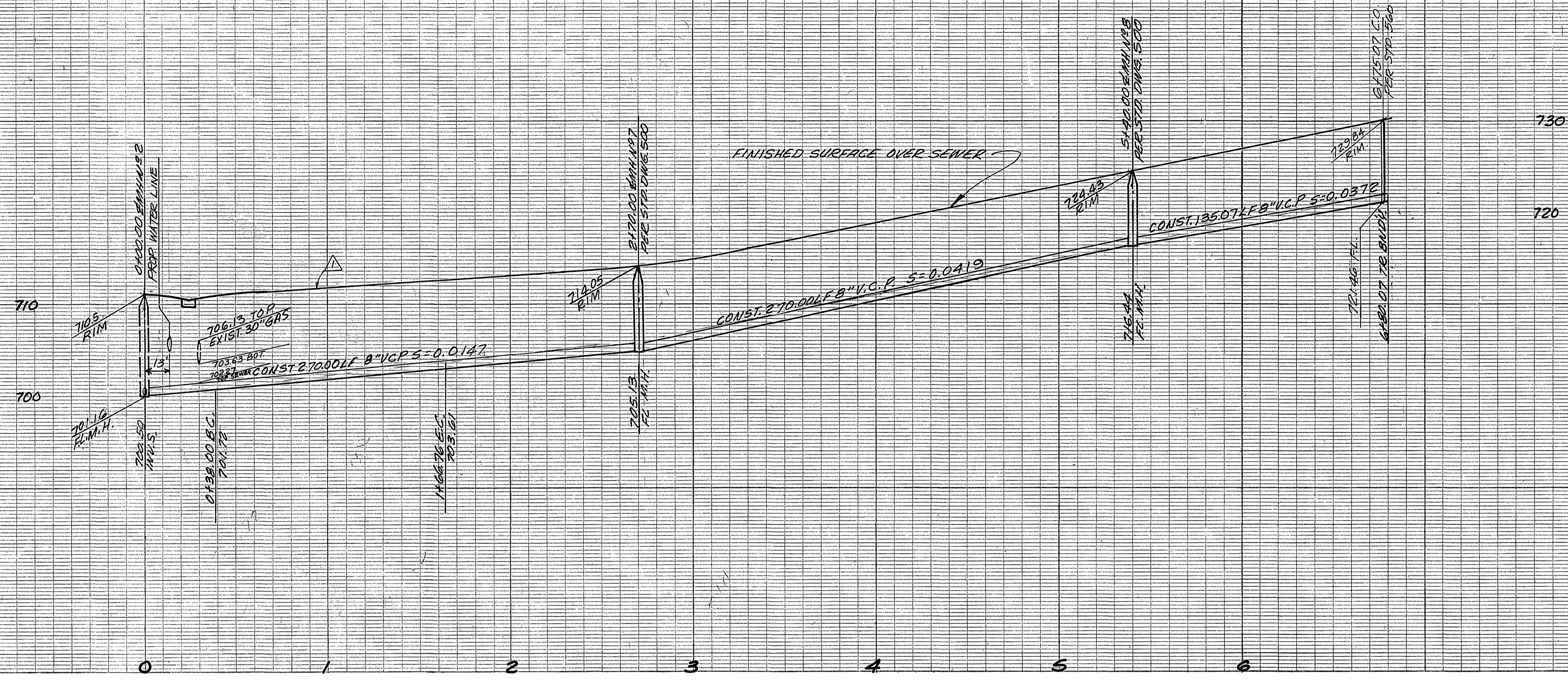
APPROVED BY: *[Signature]* 4-14-76
 CHIEF UTILITIES ENGINEER, WATER DEPT.

VCM consolidated, inc.
 ENGINEERS, ARCHITECTS, PLANNERS 85.100 CAMINO REAL, RIVERSIDE, CALIFORNIA 92504
 PREPARED UNDER THE SUPERVISION OF
[Signature] 9/2/74
 PAUL H. BAERENS P.C.E. 15557 DATE

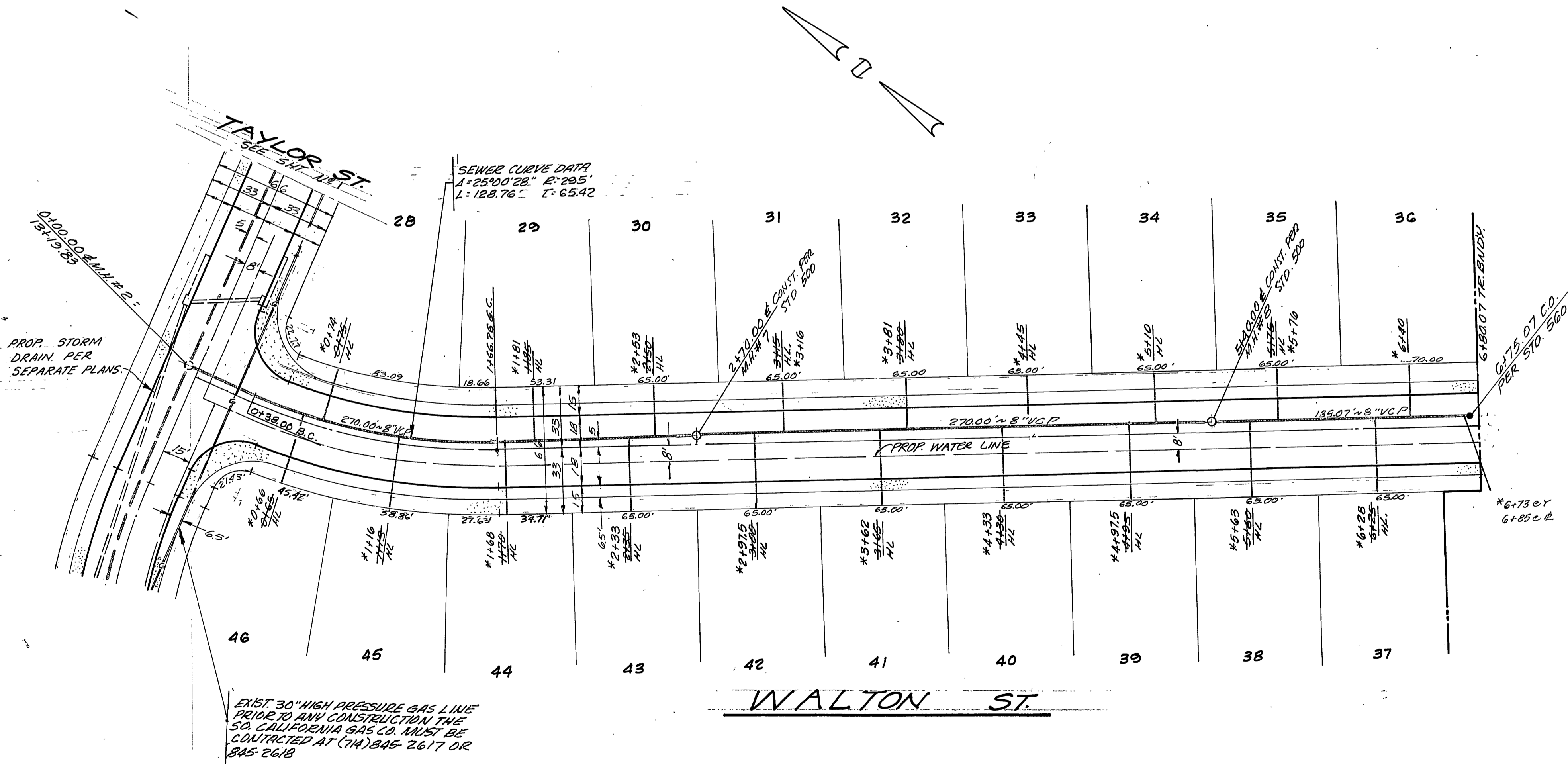
DESIGNED BY: _____ DRAWN BY: _____ CHECKED BY: *[Signature]*
 REVISIONS: _____
 APPR. DATE: _____

CITY OF RIVERSIDE, CALIFORNIA
 DEPARTMENT OF PUBLIC WORKS
 OFFICE ENGINEER: *[Signature]* 10/15/76
 PARK DEPARTMENT
 TRAFFIC DIVISION
 ASSISTANT CITY ENGINEER: *[Signature]*
 APPROVED BY: *[Signature]*
 DIRECTOR OF PUBLIC WORKS
 DATE 10/15/76

*AS BUILT 6-77 KPT
 SEWER PLAN AND PROFILE
 HANCOCK DR.
 TRACT NO 6750-1
 PROJECT NO. S-1035
 SHEET 2 OF 4
 FILE NO. 5513
 HORIZ. SCALE: 1" = 40' VERT. SCALE: 1" = 8'



BENCH MARK
 U.S.C. & G.S. B.M. K-39 1924 DISK IN
 HEADWALL ON N.W. COR. FULLMORE &
 SANTA FE RR. TRACKS F.B. 706/39
 ELEV. 722.010



APPROVED BY: <i>Wesley J. [Signature]</i> 4-14-76 CHIEF UTILITIES ENGINEER, WATER DEPT.		DESIGNED BY: <i>[Signature]</i> DATE: 9/2/74 DRAWN BY: <i>[Signature]</i> CHECKED BY: <i>[Signature]</i>		CITY OF RIVERSIDE, CALIFORNIA DEPARTMENT OF PUBLIC WORKS OFFICE ENGINEER: <i>[Signature]</i> DATE: 10/15/76 PARK DEPARTMENT: <i>[Signature]</i> TRAFFIC DIVISION: <i>[Signature]</i> ASSISTANT CITY ENG.: <i>[Signature]</i>		PROJECT NO. S-1035 SHEET 3 OF 4 FILE NO. 5513	
*AG BUILT 6-77 KBT				SEWER PLAN AND PROFILE		WALTON ST.	
TRACT N ^o 6756-1				HORIZ. SCALE: 1" = 40' VERT. SCALE: 1" = 8'		99-7	

735

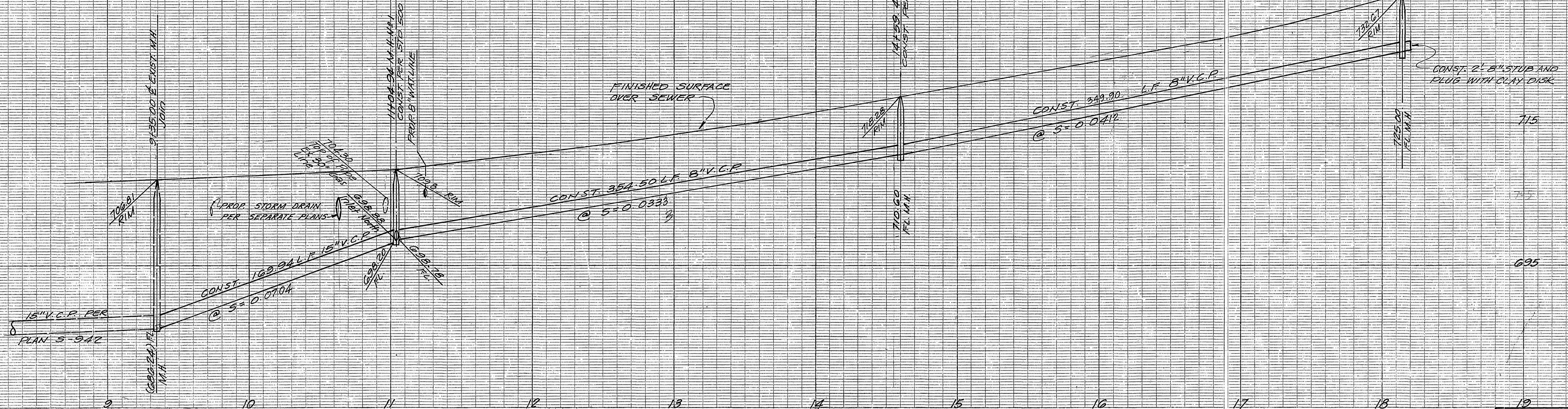
715

695

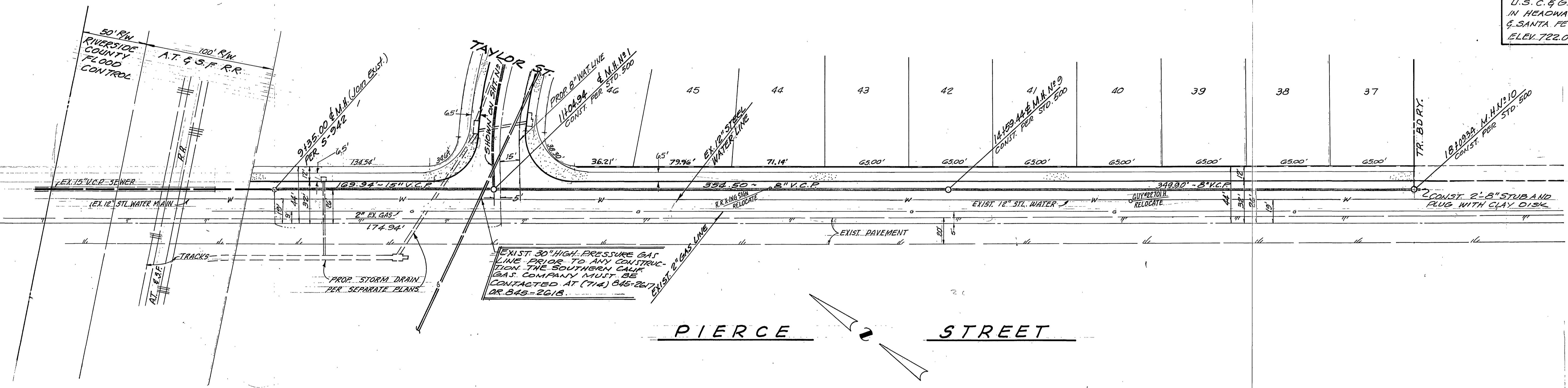
735

715

695



BENCH MARK:
 U.S.C. & G.S. B.M. K-38 1924 DISK
 IN HEADWALL ON N.W. COR. FILLMORE
 & SANTA FE R.R. TRACKS. F.B. 700/34
 ELEV. 722.010



APPROVED BY:
Paul H. Bardios
 CHIEF UTILITIES ENGINEER, WATER DATE 4-14-76

V.T.N.
 ENGINEERS ARCHITECTS PLANNERS 2301 CAMPUS DRIVE, RIVERSIDE, CALIFORNIA 92504
 PREPARED UNDER THE SUPERVISION OF
Paul H. Bardios 9/3/74
 PAUL H. BARDIOS - RCE 15857 DATE

MARK	REVISIONS	APPR.	DATE

CITY OF RIVERSIDE, CALIFORNIA
 DEPARTMENT OF PUBLIC WORKS
 APPROVED BY: *William D. Gardner*
 OFFICE ENGINEER PARK DEPARTMENT
 TRAFFIC DIVISION ASSISTANT CITY ENG.
 DATE 10/15/76

*AS BUILT 6-77 KET
SEWER PLAN AND PROFILE
 PROJECT NO. S-1035
 PIERCE STREET
 TRACT NO 6756-1 SHEET 4 OF 4
 HORIZ. SCALE: 1" = 40' VERT. SCALE: 1" = 8'
 FILE NO. 5513