

GENERAL NOTES

1. Construction shall be in accordance with Standard Specifications for Public Works Construction, 1976 Edition, and City of Riverside Standard Drawings.
2. It shall be the responsibility of the Contractor to clear the right of way in accordance with the provisions of law as it affects each utility including irrigation lines and appurtenances and of no cost to the city.
3. Pipe shall be bedded per Case I, Standard Drawing No. 452, unless otherwise specified on plans.
4. Location of Wyes and Laterals to be determined of the direction of the owner.
5. All stubs and laterals to be constructed in accordance with Standard Drawing 552; stubs to be plugged and capped; all laterals shall have a 1/8" per foot slope and wyes are to lay flat.
6. Manhole frames and covers to be set as noted in profile by Sewer Contractor after final paving of streets.
7. Laterals are to be 4" and extended to property line.
8. Prior to construction of Sewer, Contractor is to expose existing sewer and contact the Engineer for verification of existing location and elevation.
9. Encase sewer 45' each side of proposed water main crossing per Public Utilities Drawing C.W.D.-233, Type B.

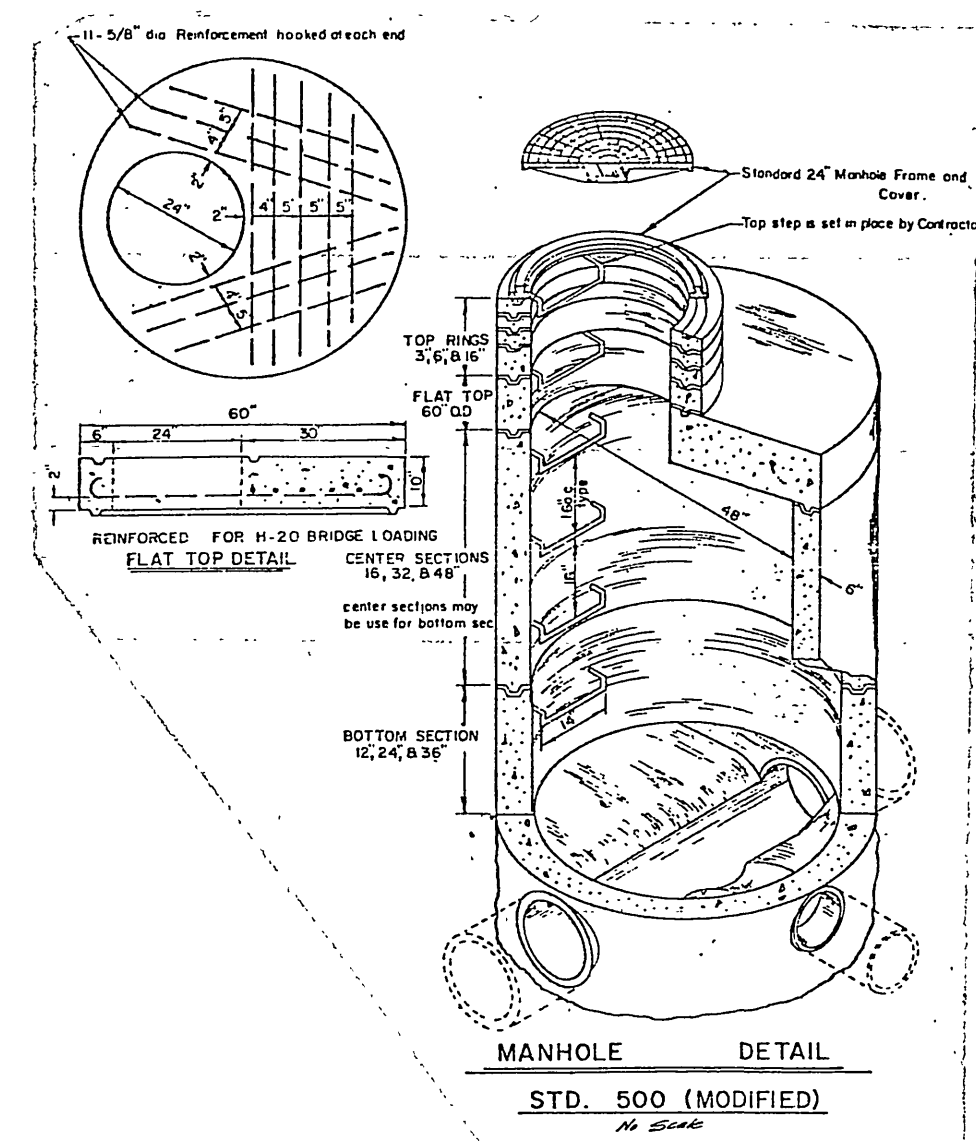
NOTICE TO CONTRACTOR

The existence and location of underground utility pipes or structures shown on these plans are obtained by a search of the available records. To the best of our knowledge, there are no existing utilities except as shown on these plans.

The Contractor is required to take due precautionary measures to protect the utility lines shown and any other lines not of record or not shown on these plans.

BENCH MARK

Top of Brass disk, stamped G-4-B in copped man of Monroe, 10' Northwest of centerline of California Ave. 5/12 R.B. 736/44. Elevation: 754.525.



ALBERT A. WEBB ASSOCIATES
 CIVIL ENGINEERS
 RIVERSIDE, CALIFORNIA
 APPROVED BY: *[Signature]* DATE: 5/25/76
 R.E. No. 2276

MARK	REVISIONS	APPR.	DATE

Approved by: *[Signature]* 10-7-76
 CHIEF UTILITIES ENGINEER, WATER
 CITY OF RIVERSIDE, CALIFORNIA
 PUBLIC WORKS DEPARTMENT
 APPROVED BY: *[Signature]* DATE: 10/15/76
 PRINCIPAL ENGINEER
 PARK DEPARTMENT
 TRAFFIC DIVISION
 CHIEF PUB. WKS. ENGR.

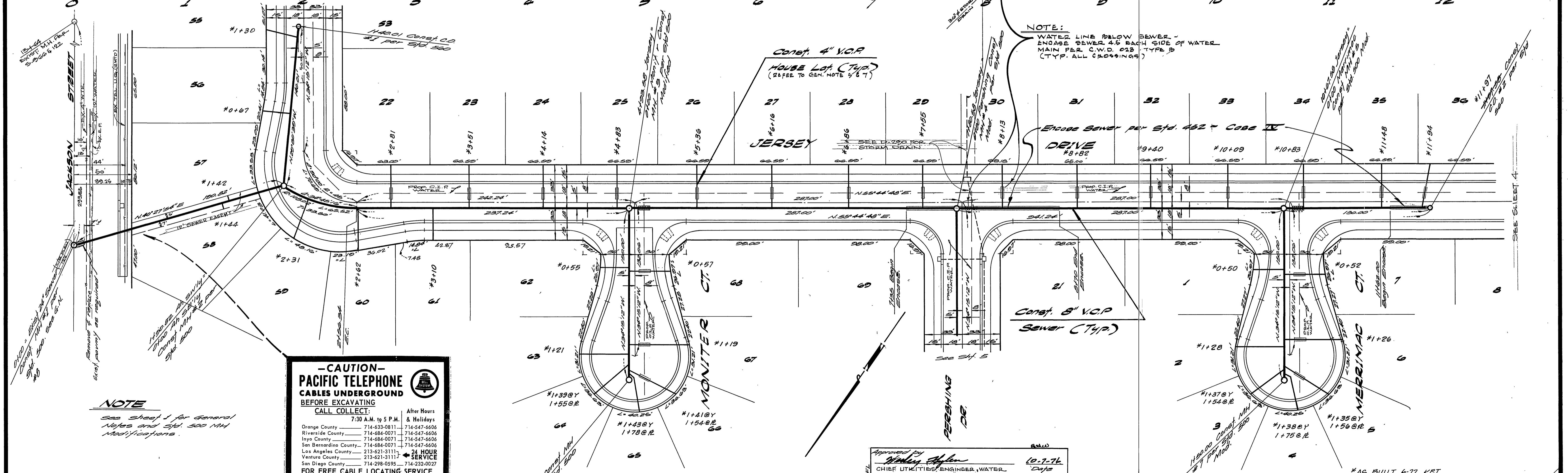
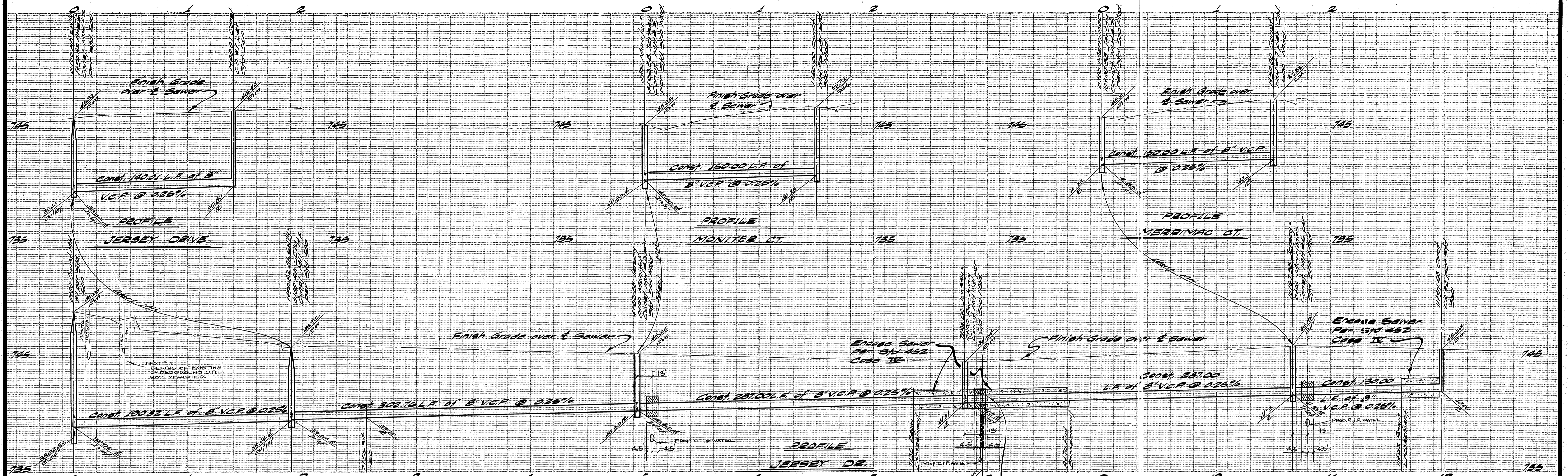
*AS BUILT 6-77 KET
 SEWER PLAN AND PROFILE
 TRACT NO. 5061
 INDEX

ACCOUNT No. INDEXED 5
 DRAWING NUMBER
 S-1038
 SHEET 1 OF 6
 75-75-B

W.O. 75-75 FOR: Woodhaven Enterprises, B. 1020

DESIGNED BY: DRE DRAWN BY: ECT CHECKED BY: JOC

SCALE: As noted



-CAUTION-
PACIFIC TELEPHONE
CABLES UNDERGROUND
BEFORE EXCAVATING
CALL COLLECT:

Orange County	714-633-0811	714-547-6606
Riverside County	714-684-0071	714-547-6606
Inyo County	714-684-0071	714-547-6606
San Bernardino County	714-684-0071	714-547-6606
Los Angeles County	213-621-3111	24 HOUR SERVICE
Ventura County	213-621-3111	24 HOUR SERVICE
San Diego County	714-298-0595	714-232-0027

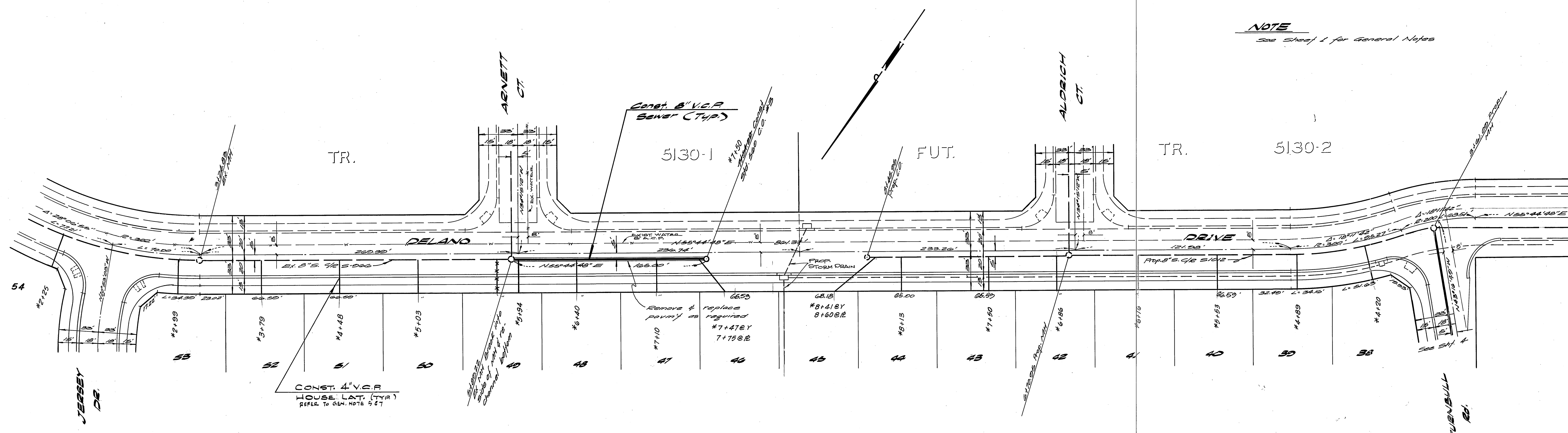
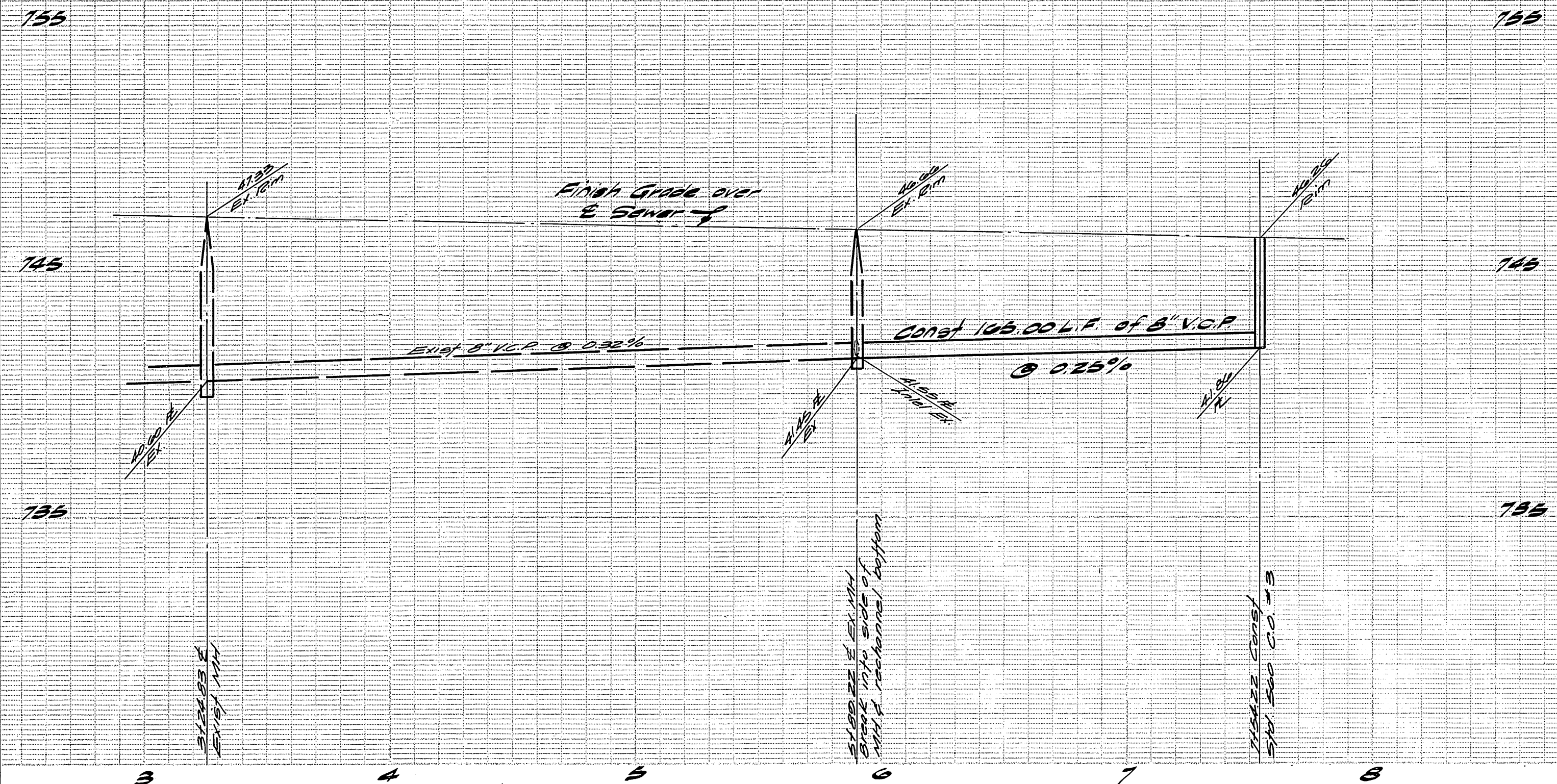
FOR FREE CABLE LOCATING SERVICE

BENCH MARK
 Top of Brass disc, stamped 54.8
 in copper man of Monroe, 10
 NW 1/4 of E. of California, 9th R.B.
 72544. Elev. 744.926.

ALBERT A. WEBB ASSOCIATES CIVIL ENGINEERS RIVERSIDE, CALIFORNIA APPROVED BY: <i>[Signature]</i> DATE: 5/8/76 R.E. No. 2272		APPROVED BY: <i>[Signature]</i> DATE: 10-7-76 CHIEF UTILITIES ENGINEER, WATER	
CITY OF RIVERSIDE, CALIFORNIA PUBLIC WORKS DEPARTMENT APPROVED BY: <i>[Signature]</i> DATE: 10/5/76 DIRECTOR OF PUBLIC WORKS		SEWER PLAN AND PROFILE TRACT NO. 5061 JERSEY DR., MONITOR CT., MERRIMAC CT. SCALE: Horiz. 1" = 40' Vert. 1" = 4' ACCOUNT No. DRAWING NUMBER S-1038 SHEET 2 OF 2 75-75-B	

NOTE
 See Sheet 1 for General Notes and Sfr. 500 NH Modifications.

SEE SHEET 4



NOTE
See Sheet 1 for General Notes

BENCH MARK
Top of Brass disc stamped
614.8 in exposed man of Menros.
10' NW 1/4 of E of California.
1/2 E.B. 225/44.
Elev: 724.225

ALBERT A. WEBB ASSOCIATES
CIVIL ENGINEERS
RIVERSIDE, CALIFORNIA
APPROVED BY *[Signature]* DATE 5/25/76
R.E. No. 2276

MARK	REVISIONS	APPR.	DATE

Approved By *[Signature]*
CHIEF UTILITIES ENGINEER, WATER
CITY OF RIVERSIDE, CALIFORNIA
PUBLIC WORKS DEPARTMENT
APPROVED BY *[Signature]* DATE 10/15/76
DIRECTOR OF PUBLIC WORKS

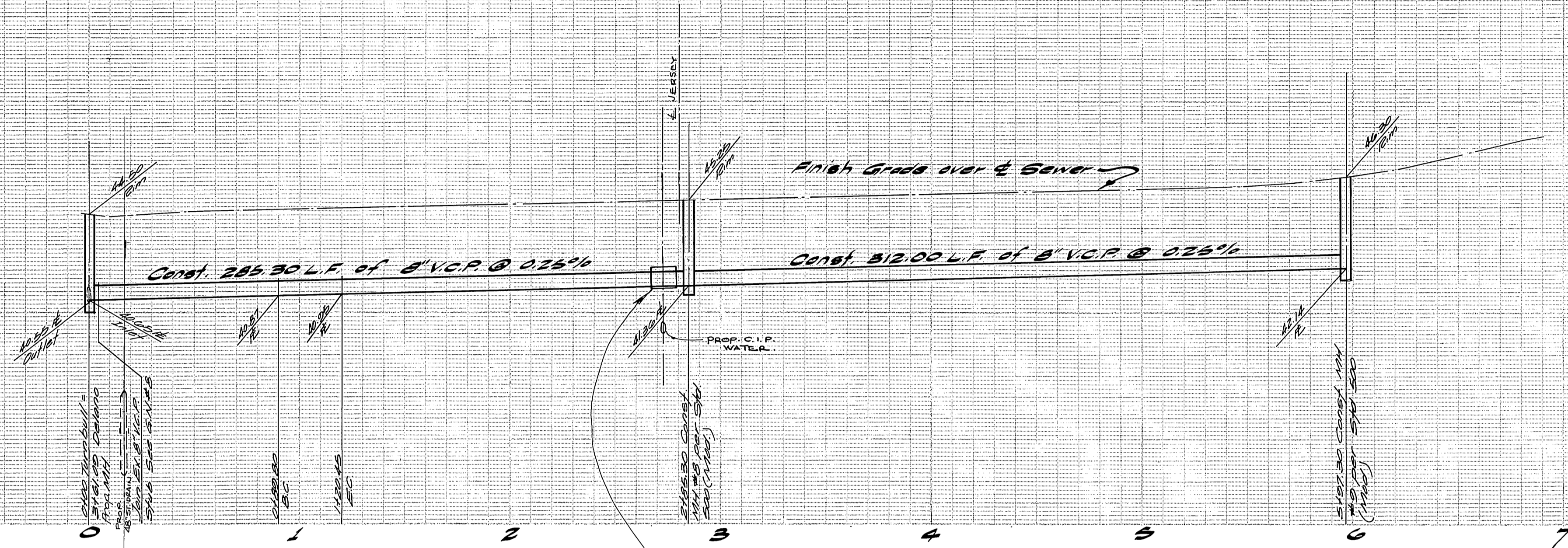
ACCOUNT No. 5-1038
DRAWING NUMBER
TRACT No 5061
DELANO DRIVE
SHEET 3 OF 6
SCALE: Horiz: 1"=40' Vert: 1"=4'

W.G. 75-75 FOR Woodmen Enterprises F.B. 1920
DESIGNED BY DSE, DRAWN BY ECT, CHECKED BY [Signature]

750

740

730

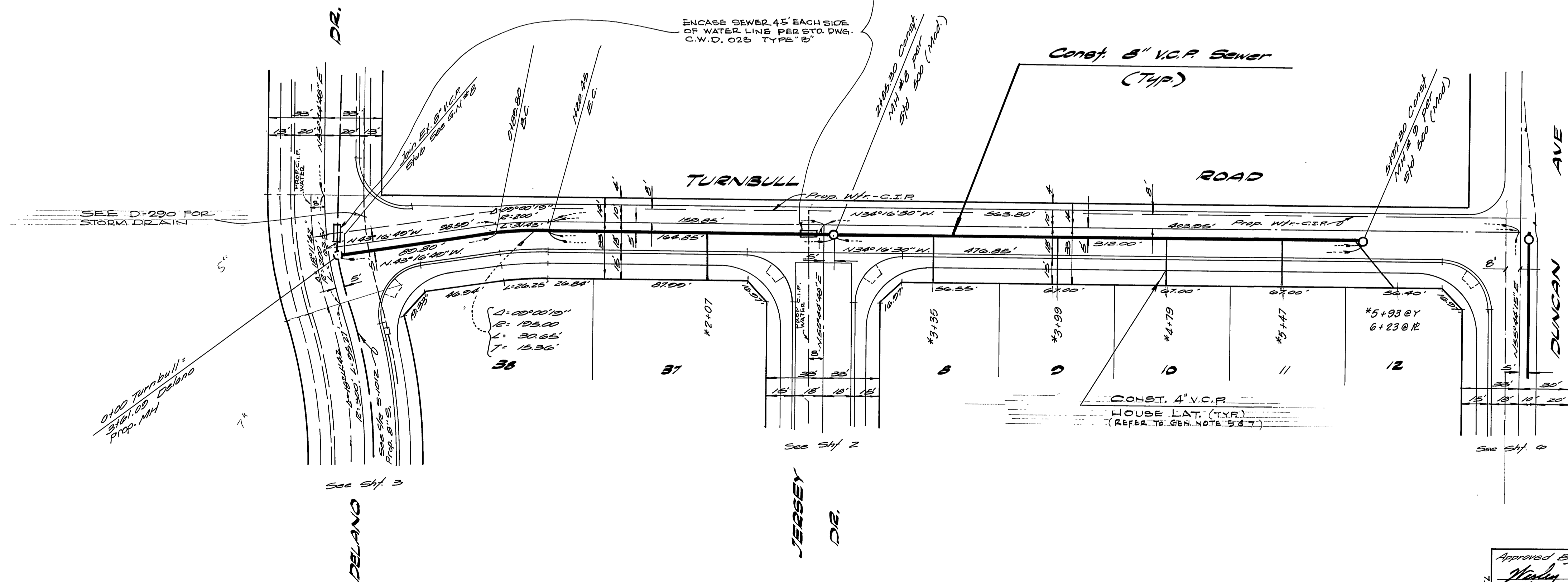


750

740

730

NOTE
 See Sheet 1 for General Notes and Standard 500 MM Modifications



BENCH MARK

Top of brass disc stamped G-4-B in capped man of 14\"/>

ALBERT A. WEBB ASSOCIATES
 CIVIL ENGINEERS
 RIVERSIDE, CALIFORNIA

APPROVED BY: *[Signature]* DATE: 10/15/76
 R.E. No. 2272

MARK	REVISIONS	APPR.	DATE

Approved By: *[Signature]* 10-1-76
 CHIEF UTILITIES ENGINEER, WATER

CITY OF RIVERSIDE, CALIFORNIA
PUBLIC WORKS DEPARTMENT

APPROVED BY: *[Signature]*
 DIRECTOR OF PUBLIC WORKS

DATE: 10/15/76

*AS BUILT 6.77 MFT

SEWER PLAN AND PROFILE

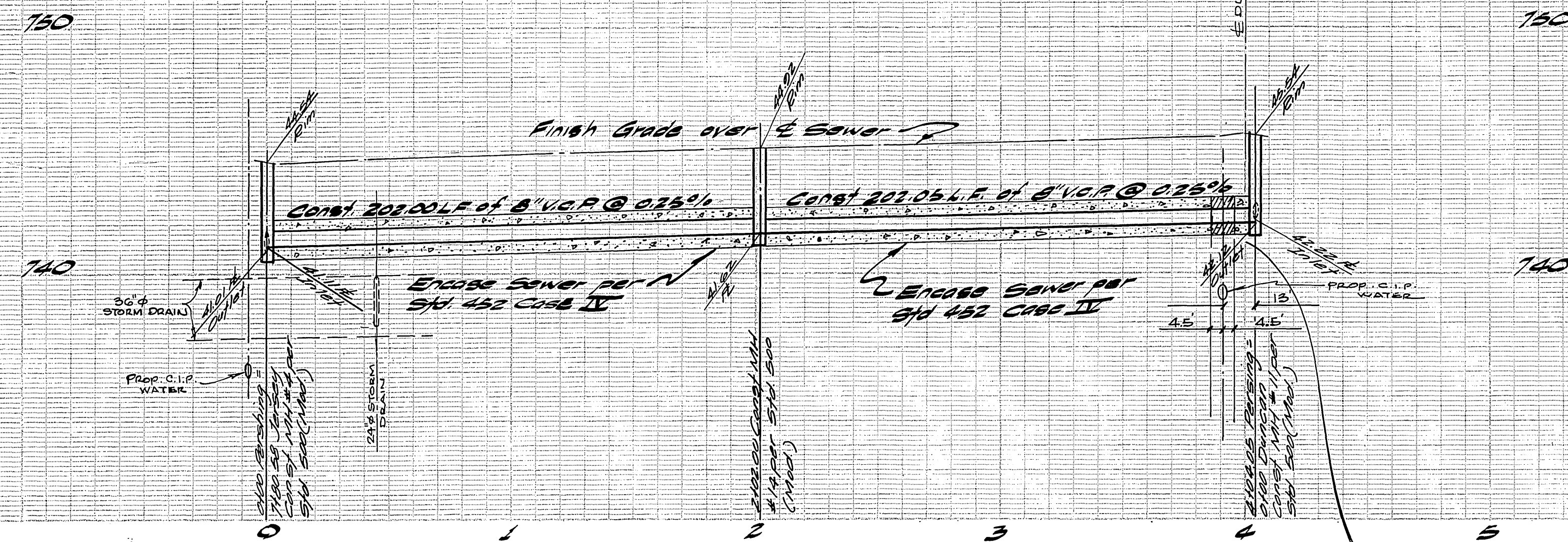
TRACT NO. 5061
 TURNBULL ROAD

SCALE: Horiz. 1" = 40' Vert. 1" = 4'

ACCOUNT No.
 DRAWING NUMBER

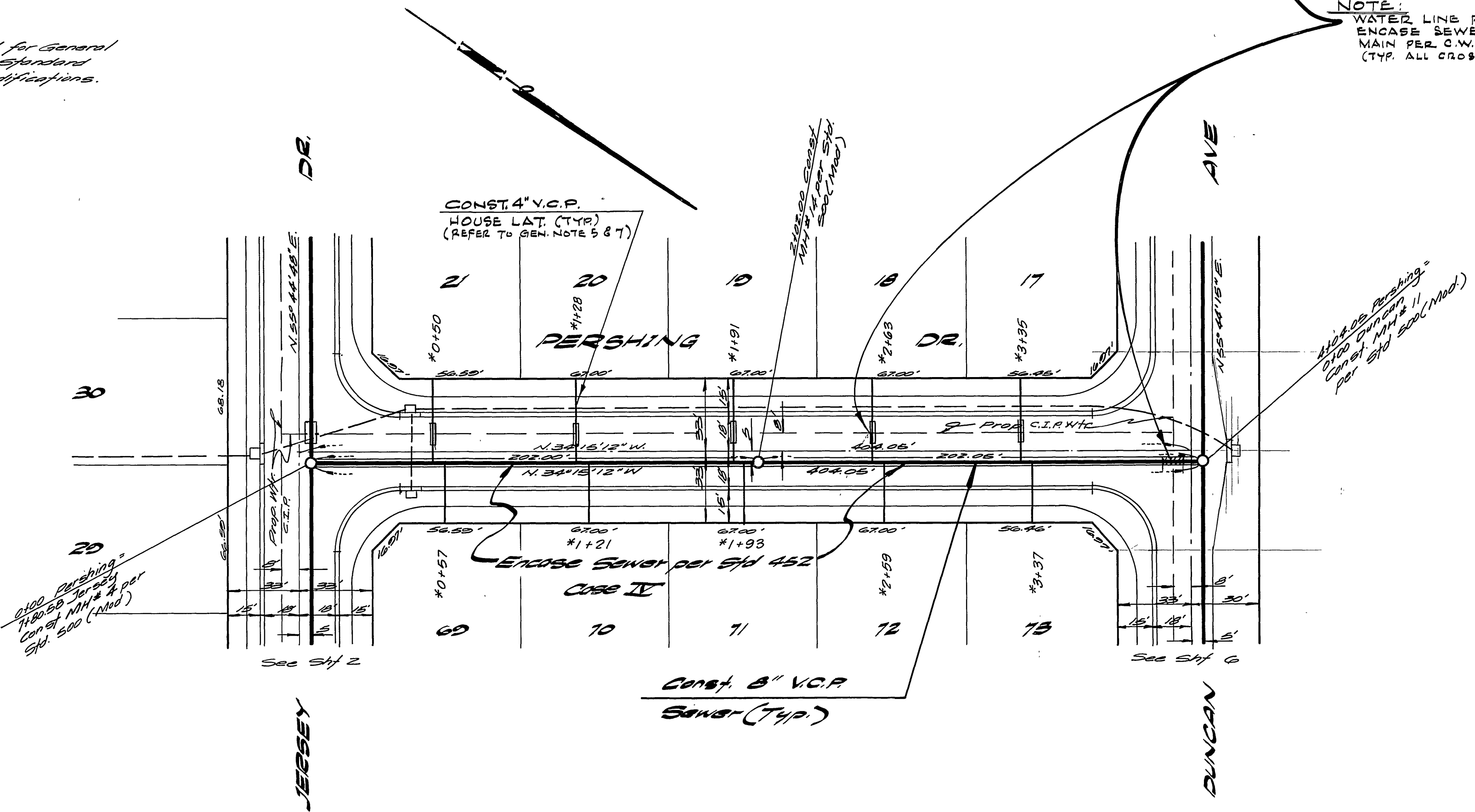
S-1038
 SHEET 4 OF 6

7575-B



NOTE
See Sheet 1 for General Notes and Standard 500 MM Modifications.

NOTE
WATER LINES BELOW SEWER. ENCASE SEWER 4'-5" EACH SIDE OF WATER MAIN PER C.W.D. 023 - TYPE B (TYP. ALL CROSSINGS)



BENCH MARK
Top of cross size stamped 5-4-B in cement man. of Manhole 10' NW 1/4 of E of California 7/2 R.B. 125/144 Elev. 744.025

ALBERT A. WEBB ASSOCIATES
CIVIL ENGINEERS
RIVERSIDE, CALIFORNIA
APPROVED BY: *[Signature]* DATE: 10/15/76
R.E. No. 5076

MARK	REVISIONS	APPR.	DATE

Approved by: *[Signature]* 10-7-76
CHIEF UTILITIES ENGINEER, WATER DEPT.
CITY OF RIVERSIDE, CALIFORNIA
PUBLIC WORKS DEPARTMENT
APPROVED BY: *[Signature]*
DIRECTOR OF PUBLIC WORKS
DATE: 10/15/76

*AS BUILT 6-77 RFT
SEWER PLAN AND PROFILE
TRACT NO. 5061
PERSHING DRIVE
SCALE: Horiz. 1" = 40' Vert. 1" = 4'

ACCOUNT No. DRAWING NUMBER
S-1038
SHEET 5 OF 6
75-75-B

W.O. 75-76 FOR: Woodman Enterprises F.B. 1970

DESIGNED BY: *[Signature]* DRAWN BY: *[Signature]* CHECKED BY: *[Signature]*

760

750

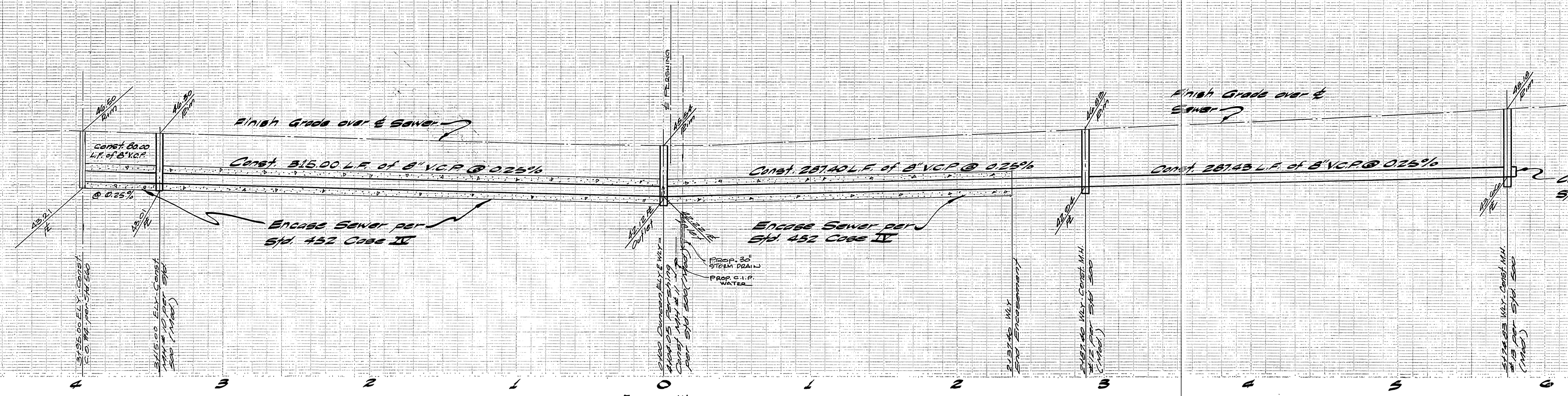
740

750

740

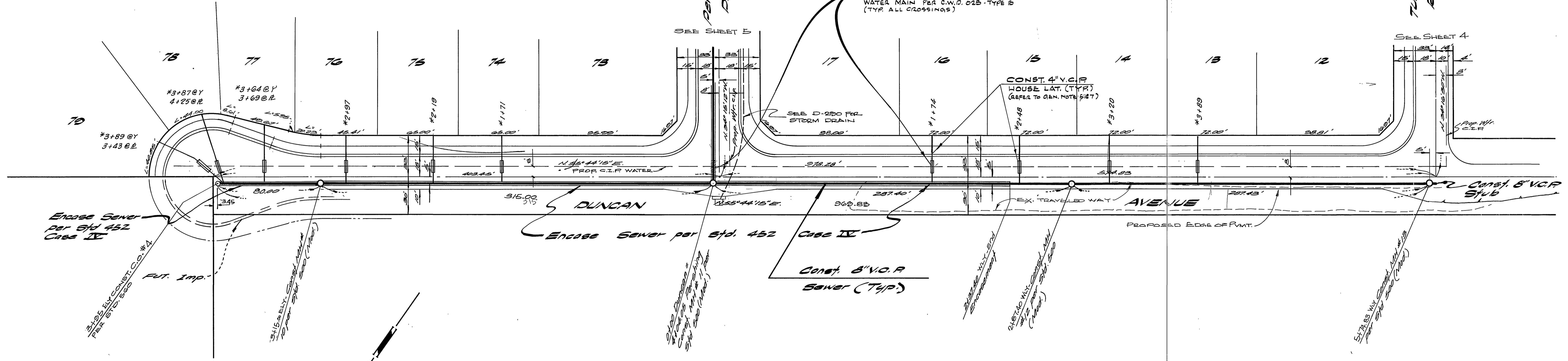
730

5 4 3 2 1 0 1 2 3 4 5 6



NOTE
See Sheet 1 for General Notes and Standard 300 MM Modifications

NOTE:
WATER LINE BELOW SEWER. ENCASE SEWER 4.5' EACH SIDE OF WATER MAIN PER C.W.D. 025-TYPE B (TYR ALL CROSSINGS)



BENCH MARK
Top of brass disc stamped 6-4-8 in copper man. of Monroes 10' N. of E. of California. 016 N.D. 720/44. Elev. 744.22

ALBERT A. WEBB ASSOCIATES
CIVIL ENGINEERS
RIVERSIDE, CALIFORNIA
APPROVED BY: [Signature] DATE: 5/27/76
R.E. No. 0072

MARK	REVISIONS	APPR.	DATE

Approved by: [Signature]
CHIEF UTILITIES ENGINEER, WATER
10-7-76
CITY OF RIVERSIDE, CALIFORNIA
PUBLIC WORKS DEPARTMENT
APPROVED BY: [Signature]
DIRECTOR OF PUBLIC WORKS
DATE: 10/15/76

SEWER PLAN AND PROFILE
TRACT NO. 5061
DUNCAN AVE
SCALE: Horiz. = 1"=40' VERT. 1"=40'

ACCOUNT No.
DRAWING NUMBER
S-1038
SHEET 6 OF 6
76-76-B