

General Sewer Notes

1. Construction shall be in accordance with the Standard Specifications for Public Works Construction, 1970 edition, and City of Riverside Standard Drawings.
2. It shall be the responsibility of the Contractor to clear the right of way in accordance with the provisions of the law as it affects such utility, including irrigation lines and easements and of no cost to the City.
3. The pipe shall be bedded per Case I, Standard Drawing No. 452.
4. Location of manholes and laterals to be determined at time of construction.
5. All stubs and laterals to be constructed per Standard Drawing No. 562. Stubs shall be plugged & capped.
6. Manhole frames and covers to be set to finished grade by the sewer contractor after the final paving of streets.
7. Curbside to be finished and extended to the property line.
8. A flag shall be installed and will remain in place where the new sewer connects to the existing sewer until the new sewer is accepted by the City.

Notice to Contractor

The existence and location of any underground utility pipes or structures shown on these plans are obtained by a search of the available records. To the best of our knowledge, there are no existing utilities except as shown on these plans.

The Contractor is required to take due precautionary measures to protect the utility lines shown and any other lines not of record or not shown on these plans.

ALBERT A. WEBB ASSOCIATES
 CIVIL ENGINEERS
 RIVERSIDE, CALIFORNIA

APPROVED BY: *Albert A. Webb* DATE: 12/19/75
 R.E. No. 21884

DESIGNED BY: LBL	DRAWN BY: LR	CHECKED BY: WMM
DATE: 7-7-76	DATE: 7-7-76	DATE: 7-7-76

Public Utilities Department
 Approved By: *Walter Stylen* DATE: 1-5-76
 Chief Water Utilities Engineer

CITY OF RIVERSIDE, CALIFORNIA
 PUBLIC WORKS DEPARTMENT

APPROVED BY: *Frank J. Smith*
 DIRECTOR OF PUBLIC WORKS

DATE: 7-7-76

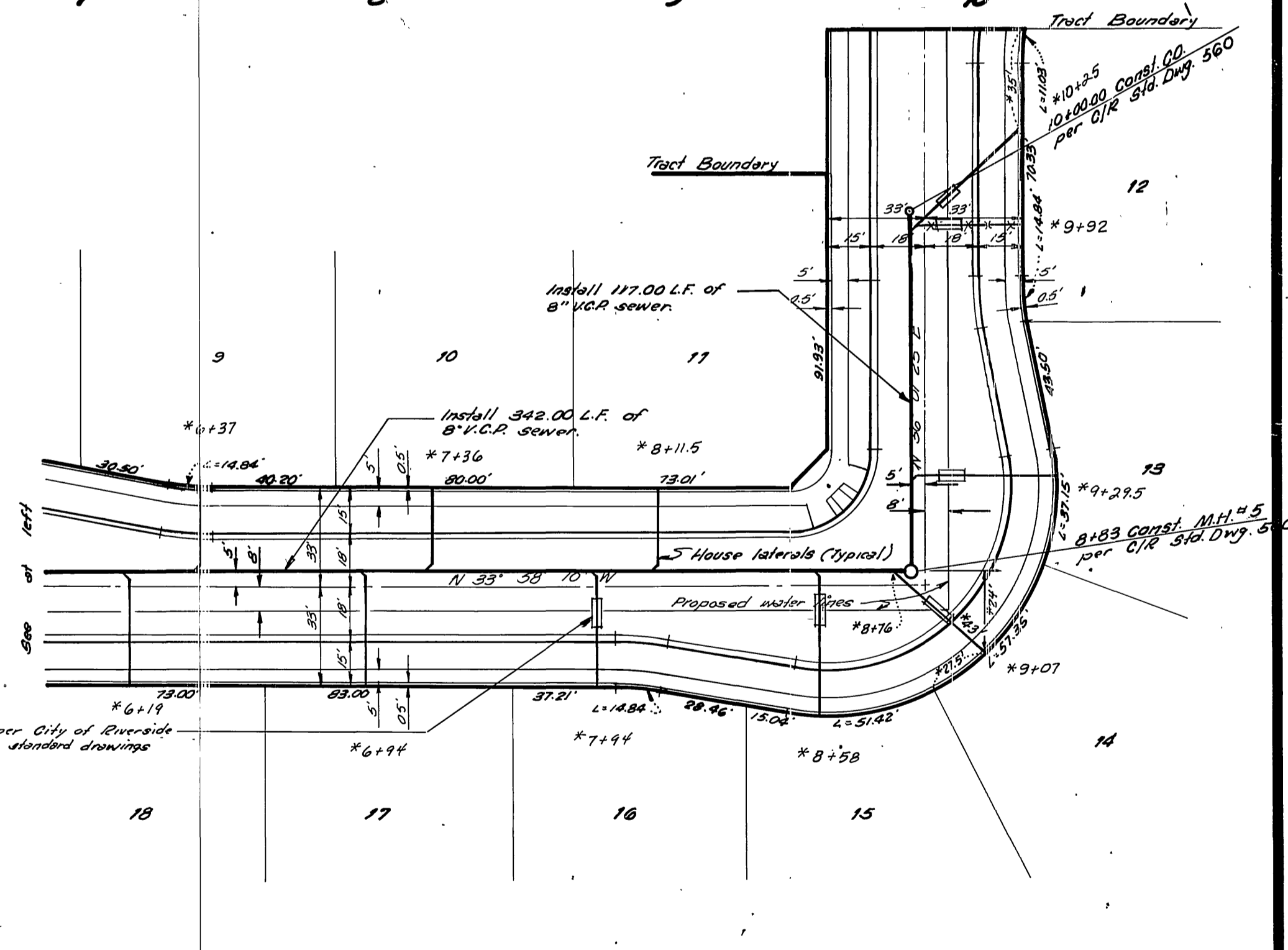
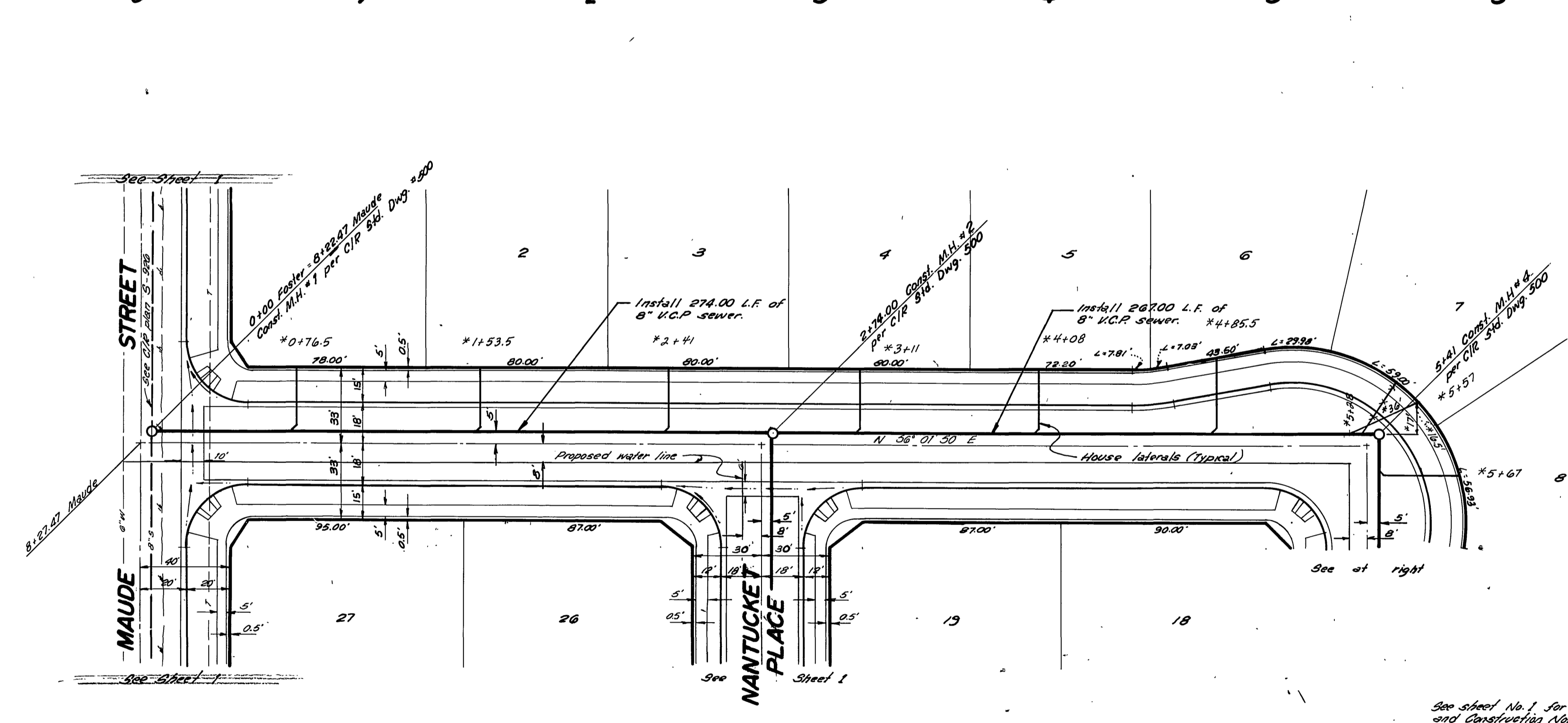
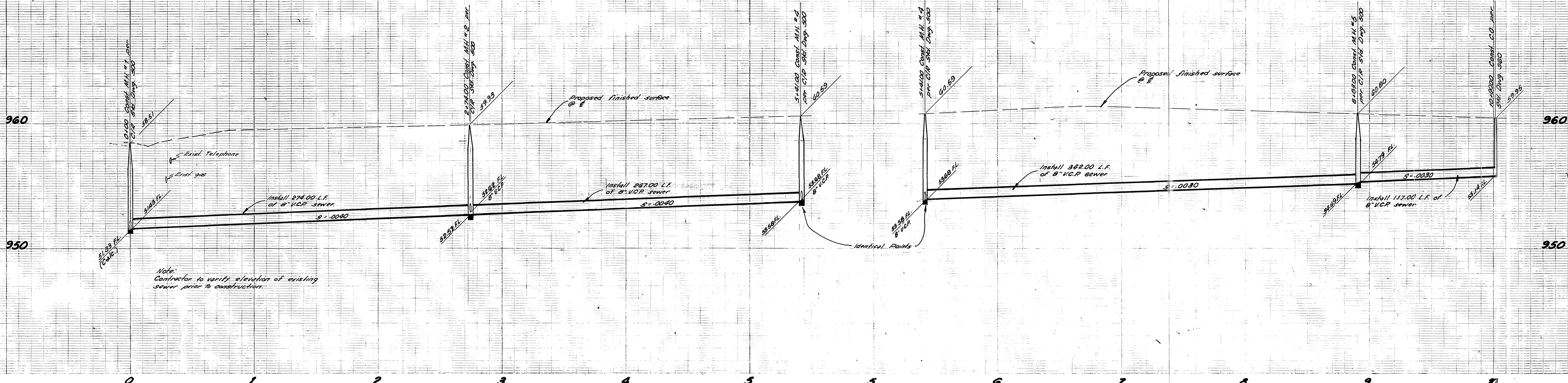
SEWER PLAN & PROFILE

TRACT 6466
 MAUDE STREET
 NANTUCKET PLACE

SCALE: HORIZ. 1"=40' Vert. 1"=4'

ACCOUNT NO.
 DRAWING NUMBER
S-1039
 SHEET 1 OF 2
 75-5

Bench Mark
 (96-6) PE nail & tag in culvert
 Inwoodell @ city corner of Victoria
 Ave. & Anne St. Elev. 360.385



Bench Mark
 (66-0) 1/4" nail 4' top in culvert
 head wall @ city corner at Victoria
 Ave. & Anne St. Elev. 960.565

FOSTER DRIVE

FOSTER DRIVE

ALBERT A. WEBB ASSOCIATES CIVIL ENGINEERS RIVERSIDE, CALIFORNIA APPROVED BY <i>Albert Webb</i> DATE 12/17/75 R.E. No. 21884		Public Utilities Department Approved By <i>Wesley Hylen</i> Date 5-76 Chief Water Utilities Engineer		CITY OF RIVERSIDE, CALIFORNIA PUBLIC WORKS DEPARTMENT APPROVED BY <i>James Smith</i> DIRECTOR OF PUBLIC WORKS DATE 7-1-76		ACCOUNT No. DRAWING NUMBER S-1039 SHEET 2 OF 2	
W.O. 75-5 FOR DR. M.H. MACARTHUR F.B. 1037		DESIGNED BY <i>LDL</i> DRAWN BY <i>L</i> CHECKED BY <i>LDL</i>		SCALE: Horiz. 1"=40' Vert. 1"=4' *AS BUILT 3-77 KPT		75-5	