



TRACT
5677-2

INDEX MAP

GENERAL NOTES:

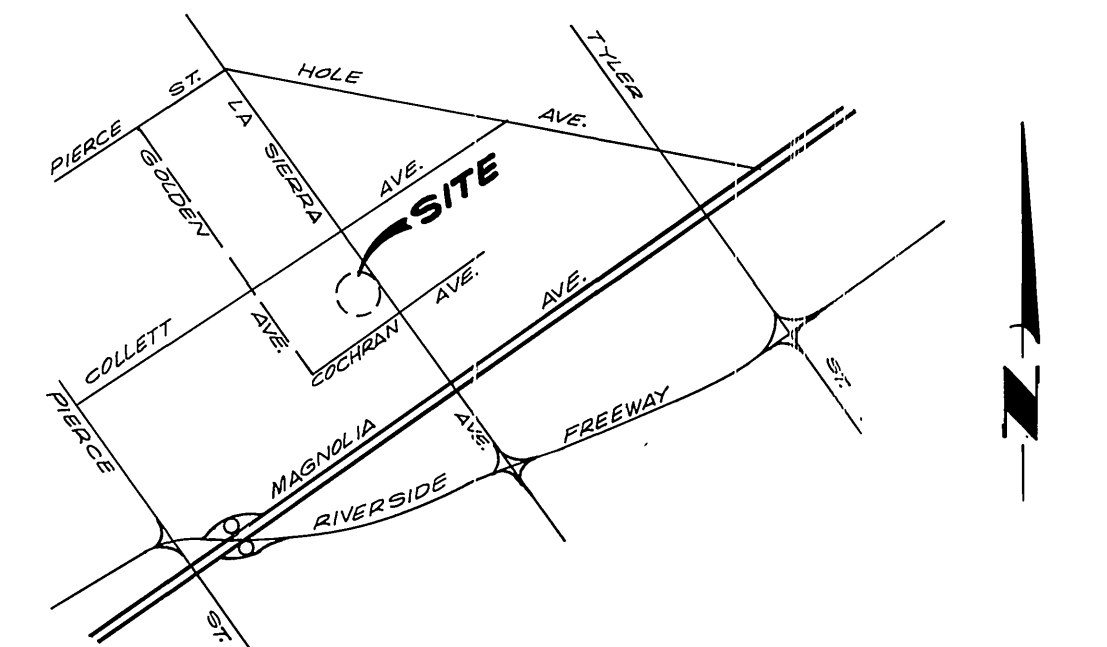
1. Construction shall be in accordance with the Standard Specifications for Public Works construction, 1973 Edition, and City of Riverside Standard Drawings.
2. It shall be the responsibility of the Contractor to clear the right of way, in accordance with the provisions of the law as it affects each utility including irrigation lines and appurtenances and at no cost to the City.
3. Pipe shall be bedded per Case I, Standard Drawing No. 452, unless otherwise specified on plans.
4. Location of wyes and laterals to be determined at the direction of the owner.
5. All stubs and laterals to be constructed in accordance with Standard Drawing No. 562. Stubs shall be plugged and capped.
6. Manhole frames and covers to be set as noted in profile by Sewer Contractor after final paving of street.
7. Laterals are to be 4" and extended to property line.
8. Prior to construction of sewer, Contractor is to expose existing sewer and contact the Engineer for verification of existing elevations.
9. All manholes to be constructed per Standard No. 500.
10. Cleanout to be constructed per Standard No. 560.
11. A Plug shall be installed and will remain in place where the new sewer connects with the existing sewer until the new sewer is accepted by the City.

NOTICE TO CONTRACTOR:

The existence and location of underground utility pipes or structures shown on these plans are obtained by a search of the available records. To the best of our knowledge, there are no existing utilities except as shown on these plans. The Contractor is required to take due precautionary measures to protect the utility lines shown and any other lines not of record or not shown on these plans.

BENCH MARK:

Set RR spike in Power Pole No. 24589-J at S.E. corner LA Sierra Ave. and Collet Ave.
FB. 978/5 ELEV. 704.25'



SITE LOCATION MAP
NO SCALE

ALBERT A. WEBB ASSOCIATES
CIVIL ENGINEERS
RIVERSIDE, CALIFORNIA
APPROVED BY *L.A. Wansell* DATE 6-16-76
R.E. No. 16056

MARK	REVISIONS	APPR.	DATE

APPROVED BY *Walter Wilson* DATE 6-22-76
CHIEF UTILITY ENGINEER, WATER
CITY OF RIVERSIDE, CALIFORNIA
PUBLIC WORKS DEPARTMENT
APPROVED BY *James Lynch*
DIRECTOR OF PUBLIC WORKS
DATE 7-1-76

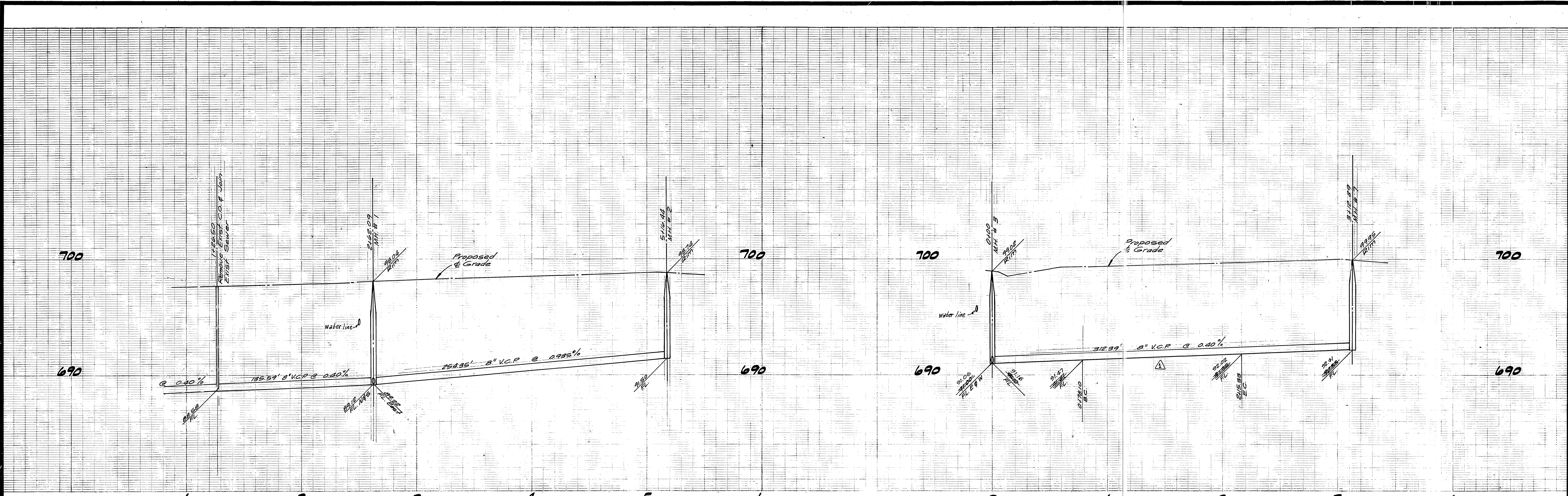
*AS BUILT 3:77 KBT
TRACT No. 5677-3
INDEX

ACCOUNT No.
DRAWING NUMBER
5-1040
SHEET **1** OF **4**
76-18-B

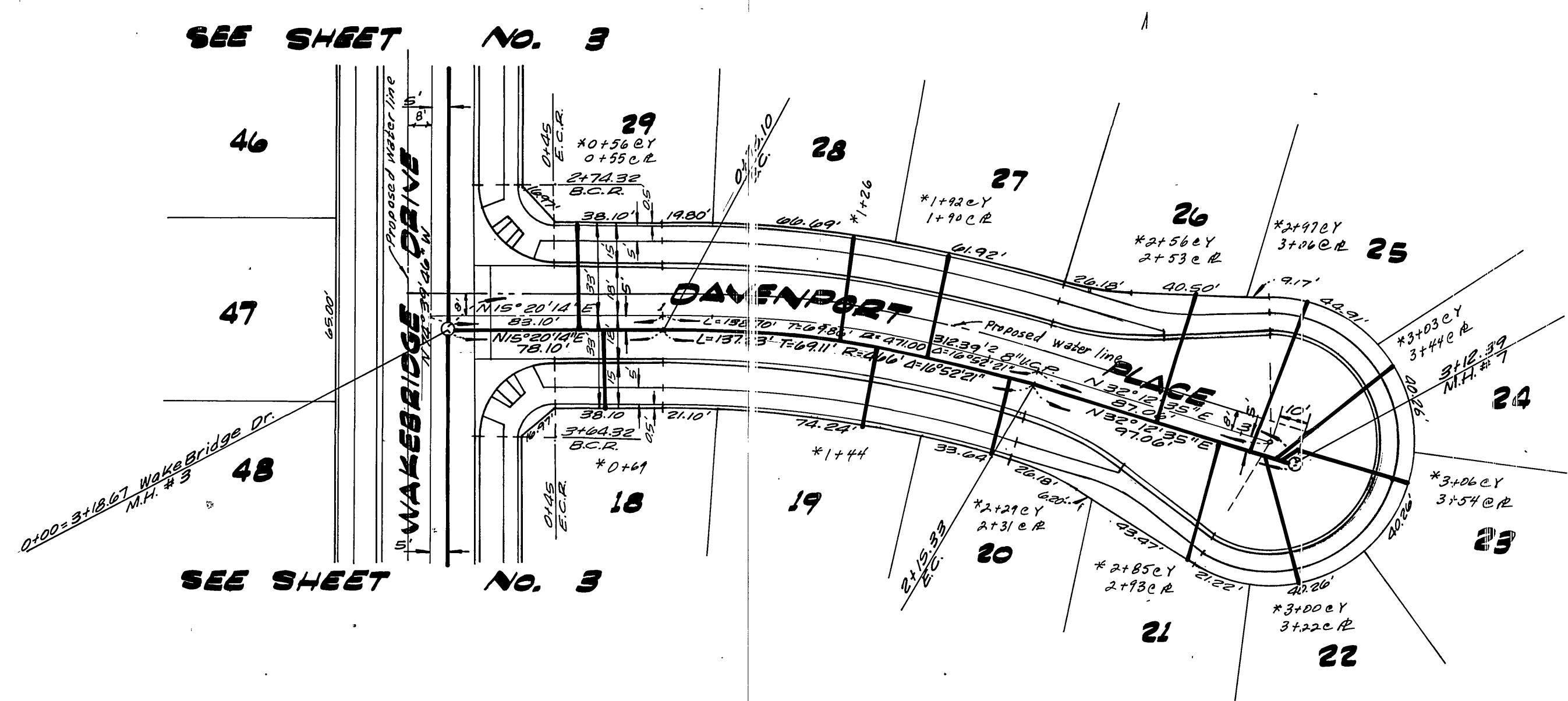
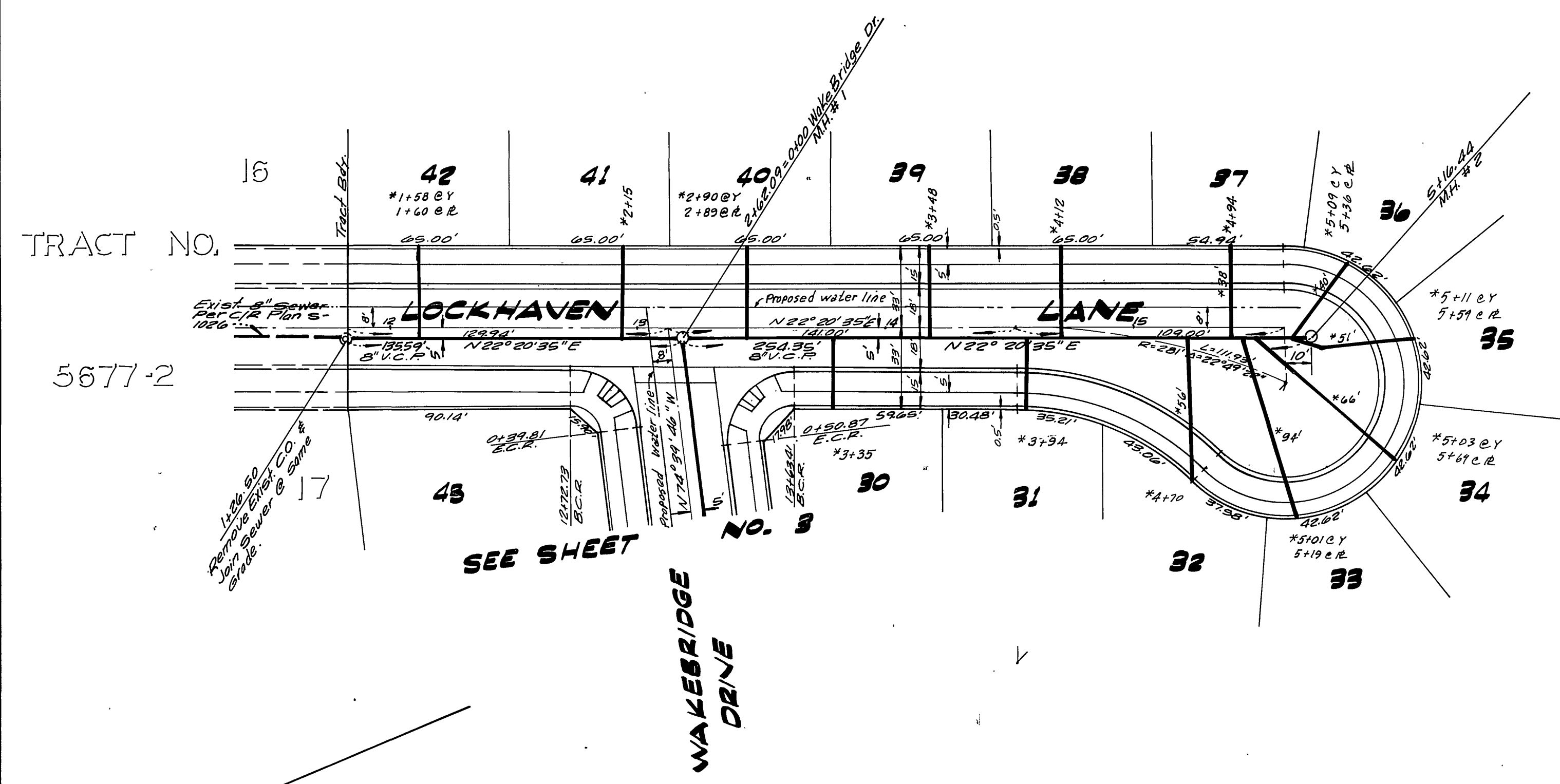
W.O. 76-18 FOR Marlborough Dev. Co. F.B. 1032

DESIGNED BY *SEL* DRAWN BY *EE* CHECKED BY *BDM*

SCALE: 1"=50'



BENCH MARK:
 Set RR spike in Power Pole, No. 24989-J at S.E. corner LA Sierra Ave. and Collet Ave.
 F.B. 978/6 ELEV. 704.25'



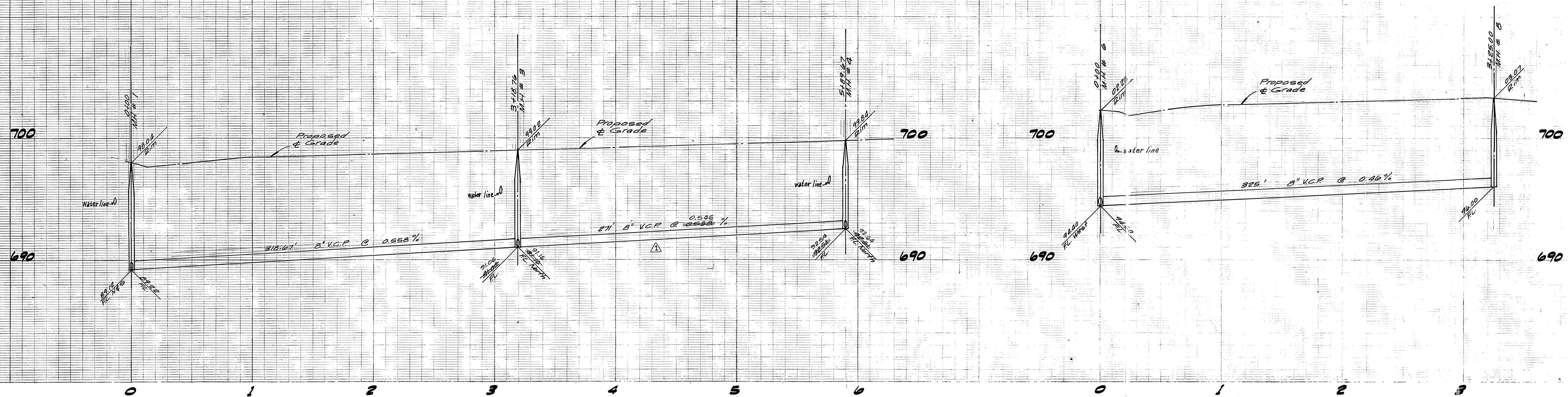
ALBERT A. WEBB ASSOCIATES
 CIVIL ENGINEERS
 RIVERSIDE, CALIFORNIA
 APPROVED BY *A.A. Webb* DATE 6-16-76
 R.E. No. 14056

Rev. Sewer & to fit Field Conditions - P.H. - 8/1/76
 MARK REVISIONS
 DESIGNED BY B.E.L. DRAWN BY R.P. CHECKED BY B.D.M.

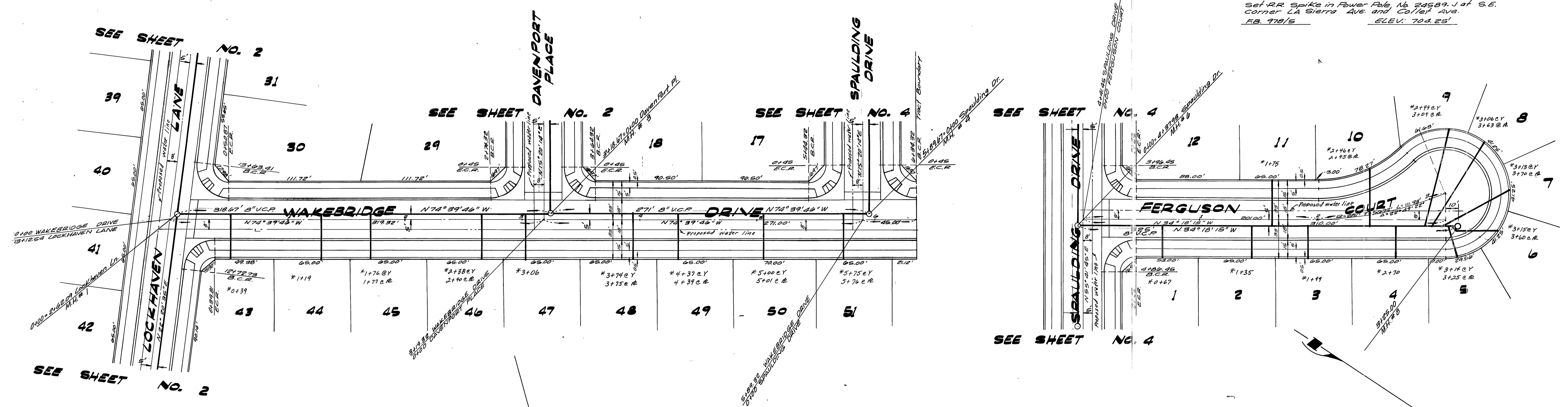
APPROVED BY *Walter Stylen* DATE 6-22-76
 CHIEF UTILITY ENGINEER, WATER
 CITY OF RIVERSIDE, CALIFORNIA
 PUBLIC WORKS DEPARTMENT
 APPROVED BY *[Signature]* DATE 7-1-76
 PRINCIPAL ENGINEER
 PARK DEPARTMENT
 TRAFFIC DIVISION
 CHIEF PUB. WKS. ENGR.

SEWER PLAN AND PROFILE
 TRACT NO. 5677-3
 DAVENPORT PLACE,
 LOCKHAVEN LANE
 SCALE: HORIZ. 1"=40', VERT. 1"=4'

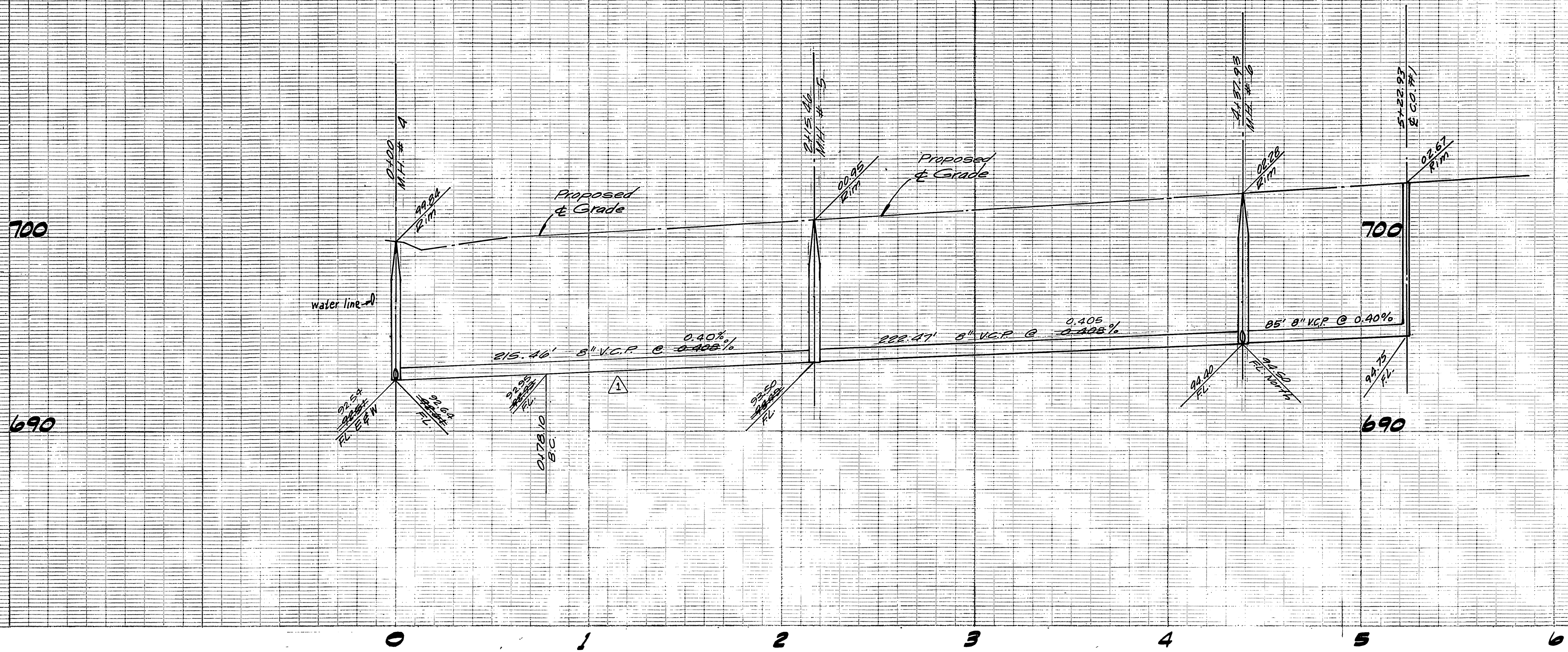
ACCOUNT No.
 DRAWING NUMBER
 S-1040
 SHEET 2 OF 4
 76-18-5



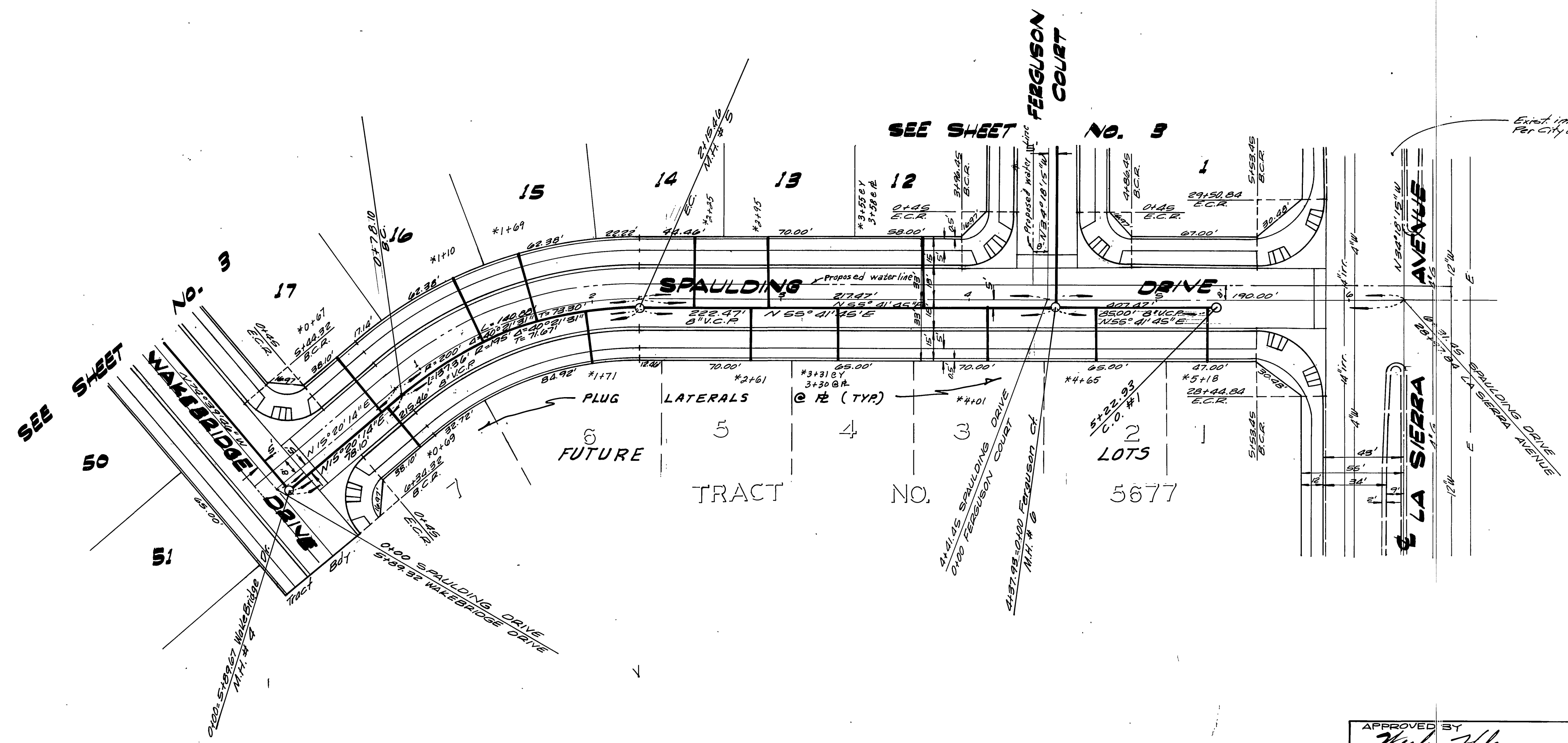
BENCH MARK:
 Set RR Spike in Power Pole, No 24989, J at S.E.
 corner LA Sierra Ave. and Collet Ave.
 F.B. 978/5 ELEV. 702.25'



ALBERT A. WEBB ASSOCIATES CIVIL ENGINEERS RIVERSIDE, CALIFORNIA APPROVED BY <i>L.A. Wainwright</i> DATE 6-14-76 R.E. No. 16256 W.O. 76-10 FOR: Marlborough Dev. Co. F.B. 1032		CITY OF RIVERSIDE, CALIFORNIA PUBLIC WORKS DEPARTMENT APPROVED BY <i>[Signature]</i> DATE 6-15-76 PRINCIPAL ENGINEER PARK DEPARTMENT TRAFFIC DIVISION CHIEF PUB. WKS. ENGR.		APPROVED BY <i>[Signature]</i> DATE 6-22-76 CHIEF UTILITIES ENGINEER, WATER		SEWER PLAN AND PROFILE TRACT NO. 5677-3 FERGUSON COURT, WAKEBRIDGE DRIVE SCALE: HORIZ. 1"=40'; VERT. 1"=4' ACCOUNT No. S-1040 DRAWING NUMBER SHEET 3 OF 4 76-10-5	
DESIGNED BY <i>BEL</i> DRAWN BY <i>RR</i> CHECKED BY <i>BDM</i>		REVISIONS 1. Rev. Sewer & to fit Field Conditions - PH-8/1/76 2. Rev. Sewer & to fit Field Conditions - PH-8/1/76		DATE 7-1-76		*AS BUILT 3-77 MFT	



BENCH MARK:
 Set RR Spike in Power Pole, No. 24589-J of S.E.
 Corner LA Sierra Ave and Collet Ave.
 F.B. 978/6 ELEV. 704.25'



ALBERT A. WEBB ASSOCIATES
 CIVIL ENGINEERS
 RIVERSIDE, CALIFORNIA
 APPROVED BY *L.A. Hainsworth* DATE 6-16-76
 R.E. No. 10256

DESIGNED BY *E.L.* DRAWN BY *R.P.* CHECKED BY *B.M.*
 W.O. 76-18 FOR Marlborough Dev. Co. F.B. 10 32

APPROVED BY *Walter J. Adams* DATE 6-22-76
 CHIEF UTILITIES ENGINEER, WATER
 CITY OF RIVERSIDE, CALIFORNIA
 PUBLIC WORKS DEPARTMENT
 APPROVED BY *[Signature]* DATE 7-1-76
 PRINCIPAL ENGINEER
 PARK DEPARTMENT
 TRAFFIC DIVISION
 CHIEF PUB. WKS. ENGR.

*AS BUILT 3-77 KBT
SEWER PLAN AND PROFILE
TRACT NO. 5677-3
SPAULDING DRIVE
 ACCOUNT No. S-1040
 DRAWING NUMBER 4 OF 4
 SCALE: HORIZ. 1"=40'; VERT. 1"=4'