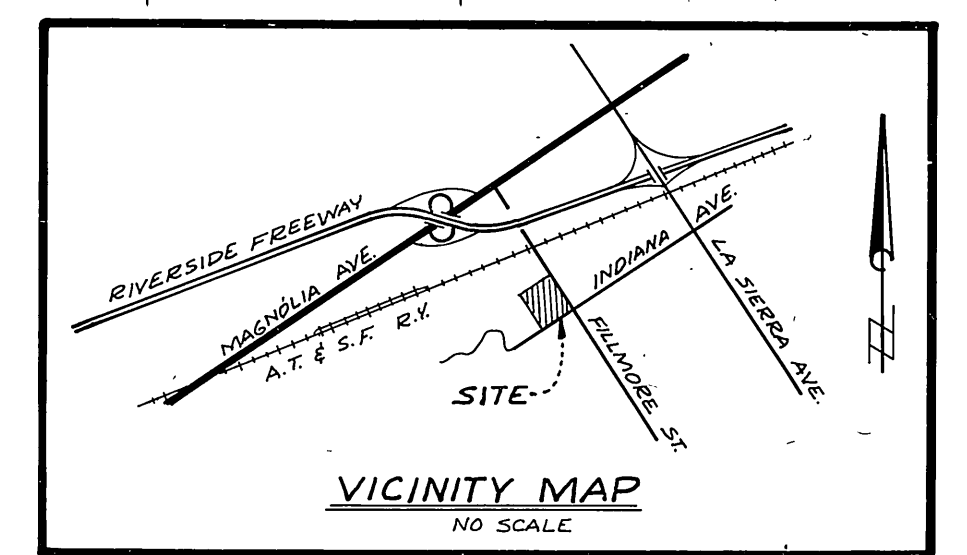


CONSTRUCTION NOTES
 ① CONSTRUCT 8" VCP SEWER MAIN
 ② CONSTRUCT 4" VCP HOUSE LATERAL

BENCH MARK
 CITY BM # 82-D. PK NAIL IN CENTER
 SE CURB RETURN, INDIANA AND FILLMORE
 STREET. ELEV. = 738.768

- SEE SHEET 2
GENERAL NOTES:
- It shall be the responsibility of the contractor to clear the right of way in accordance with the provisions of law as it affects each utility including irrigation lines and appurtenances and at no cost to the City.
 - Construction shall be in accordance with the City of Riverside, Department of Public Works Standard Drawings and the Standard Specifications for Public Works Construction, 1973 Edition.
 - Location of laterals to be determined in the field at the direction of the owner.
 - Contractor is to verify existing sewer elevation prior to construction.
 - The sewer contractor shall adjust manholes to final grade after paving is completed.
 - A plug shall be installed and will remain in place where the new sewer connects with the existing sewer until the new sewer is accepted by the city.



SOUTHERN CALIFORNIA GAS COMPANY
 APPROVED BY: [Signature] DATE: 7-6-76

APPROVED BY: [Signature] DATE: 7-27-76
 CHIEF UTILITIES ENGINEER, WATER

J. F. DAVIDSON ASSOCIATES
 CIVIL ENGINEERS - SURVEYORS - PLANNERS
 RIVERSIDE, CALIFORNIA
 APPROVED BY: [Signature] DATE: 3/30/76
 (R.E. No. 17550)
 W.O. 4807 FOR MURRAY DEV CORP F.B. 097/73

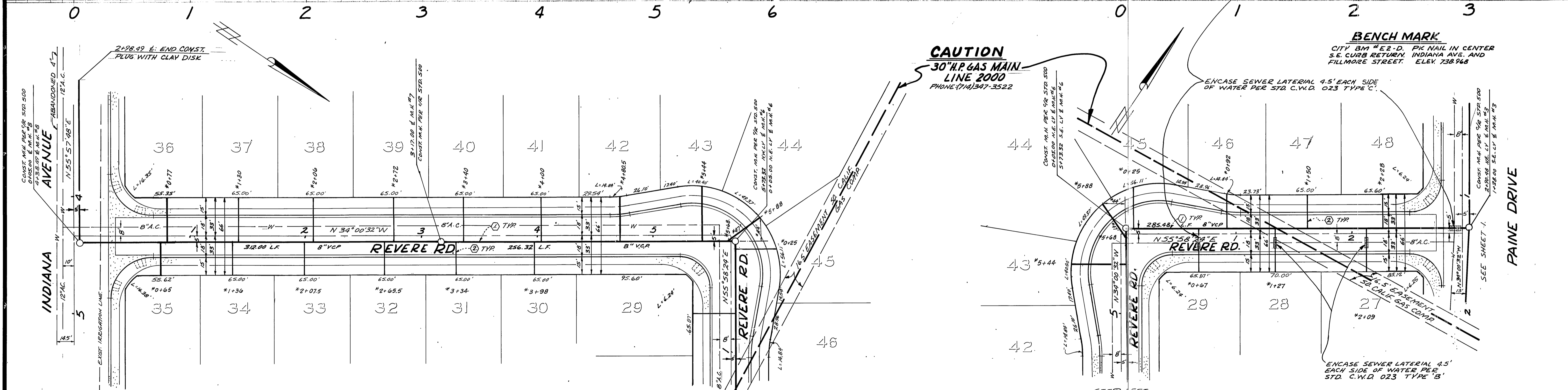
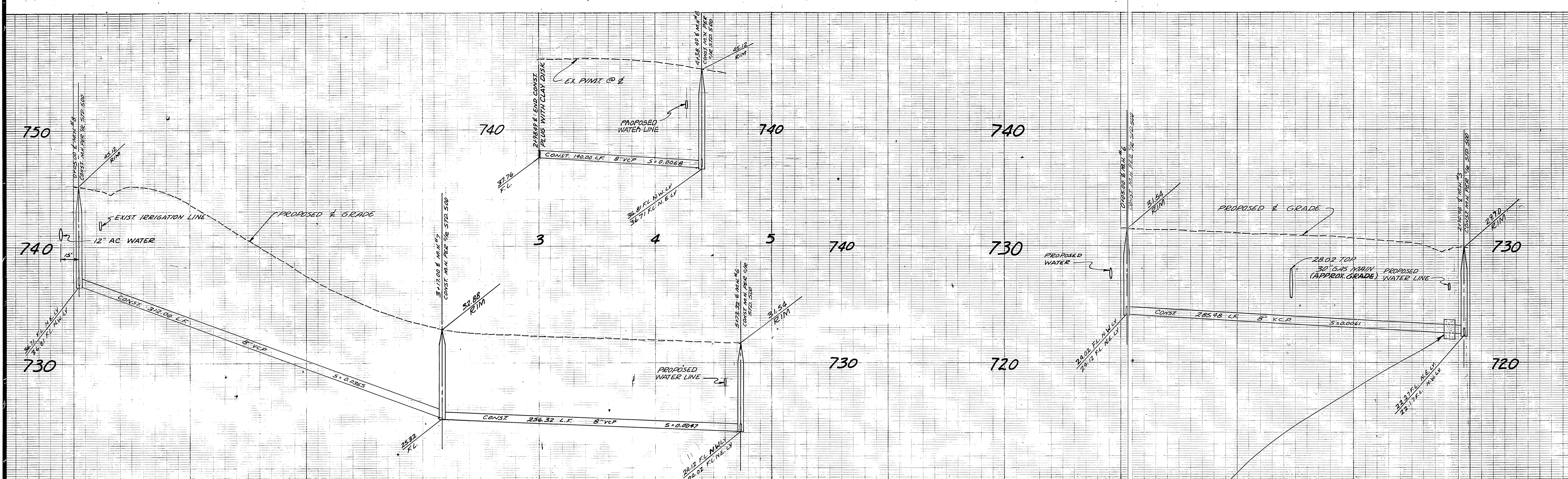
MARK	REVISIONS	APPR. DATE
Δ	CORRECTED EX. M.H. GRADE & M.H. NO. 1 GRADE	

CITY OF RIVERSIDE, CALIFORNIA
 DEPARTMENT OF PUBLIC WORKS
 APPROVED BY: [Signature] DATE: 8-18-76
 DIRECTOR OF PUBLIC WORKS

*AS BUILT 3.77 LEFT
SEWER PLAN AND PROFILE
TRACT NO. 6909
 PAINE DRIVE
 0+00 THRU 5160.86

PROJECT NO. **S-1043**
 SHEET 1 OF 2
 FILE NO. 4498

HORIZ. SCALE: 1" = 40'
 VERT. SCALE: 1" = 4'



BENCH MARK
 CITY BM #E2-D, PICK NAIL IN CENTER
 S.E. CURB RETURN, INDIANA AV. AND
 FILLMORE STREET. ELEV. 738.968

NOTE:
 FOR GENERAL NOTES AND
 CONSTRUCTION NOTES, SEE
 SHEET 1.

SOUTHERN CALIFORNIA GAS COMPANY <i>[Signature]</i> 7-6-76 APPROVED BY DATE		J. F. DAVIDSON ASSOCIATES CIVIL ENGINEERS - SURVEYORS - PLANNERS RIVERSIDE, CALIFORNIA APPROVED BY <i>[Signature]</i> DATE 3/30/76 R.E. No. 17550		CITY OF RIVERSIDE, CALIFORNIA DEPARTMENT OF PUBLIC WORKS APPROVED BY <i>[Signature]</i> DATE 8-18-76 DIRECTOR OF PUBLIC WORKS		*AS BUILT 3-77 KBT SEWER PLAN AND PROFILE TRACT NO. 6909 N.S. REVERE WAY 0+05 THRU 5+23.32 E.W. REVERE WAY 0+25 THRU 2+90.48		PROJECT NO. S-1043
APPROVED BY: <i>[Signature]</i> 7-27-76 CHIEF UTILITIES ENGINEER, WATER DATE		W.O. 4807 FOR: MURRAY DEV. CORP. F.B. 1099-1/3		DESIGNED BY <i>[Signature]</i> DRAWN BY <i>[Signature]</i> CHECKED BY <i>[Signature]</i>		HORIZ. SCALE: 1" = 40' VERT. SCALE: 1" = 4' SHEET 2 OF 2 FILE NO. 4498		