

LOCATION MAP  
No. 6537-2

**GENERAL NOTES**

1. Construction shall be in accordance with Standard Specifications for Public Works Construction, 1973 Edition, and the City of Riverside Standard Drawings.
2. It shall be the responsibility of the contractor to clear the Right of Way in accordance with the provisions of law as it affects each utility including irrigation lines and appurtenances, and at no cost to the City.
3. Pipe shall be bedded per Case 1, Standard Drawing No. 452, unless otherwise specified on plans.
4. Location of new wyes and laterals to be determined in the field at the direction of the owner, unless otherwise noted.
5. All stubs and laterals to be constructed in accordance with Standard Drawing 522.
6. Manhole frames and covers to be set as noted in profiles by Sewer Contractor after final paving of streets.
7. Laterals are to be 4" V.C.P. and extended to property line.
8. Prior to construction of sewer, contractor is to expose the existing sewer and contact the Engineer for verification of existing location and elevation.
9. Plugs shall be installed, and will remain in place, where the new sewer connects with the existing sewer until such time as the sewer is accepted by the City.
10. Location of existing wyes are shown by elevations on Index Map, this sheet, and contractor is to construct new 4" V.C.P. lateral to property line.

**NOTICE TO CONTRACTOR**

The existence and location of underground utility pipes or structures shown on these plans are obtained by a search of the available records. To the best of our knowledge there are no existing utilities except as shown on these plans.

The contractor is required to take due precautionary measures to protect the utility lines shown and any other lines not of record or not shown on these plans.

INDEX MAP  
Scale: 1" = 50'

Conch 15" x 4" Tee and 4" V.C.P. House Lateral to property line.

Note: For exist sewer see file 5-1021.

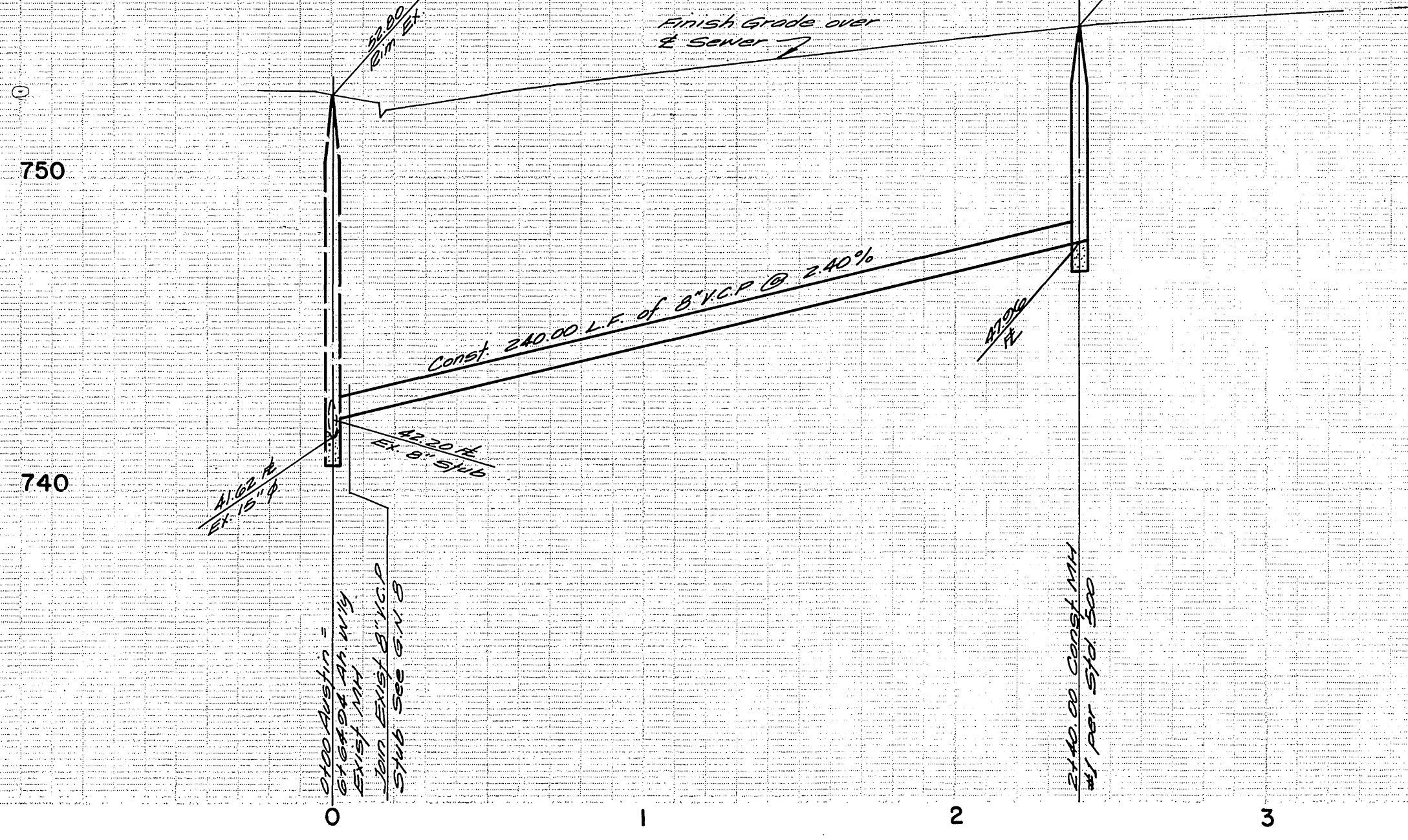
**BENCH MARK**  
Pt. 1011 in East Curb on Tyler St., on S. Gaylord Ave. produced per City of Riverside R.E. 70011 Elen 776.21 (Adjusted to 74 Datum Elen 776.20 in Sept. 1973).

ALBERT A. WEBB ASSOCIATES  
CIVIL ENGINEERS  
RIVERSIDE, CALIFORNIA  
APPROVED BY: *L.A. Harnett* DATE: 7-7-76  
R.E. No. 10050

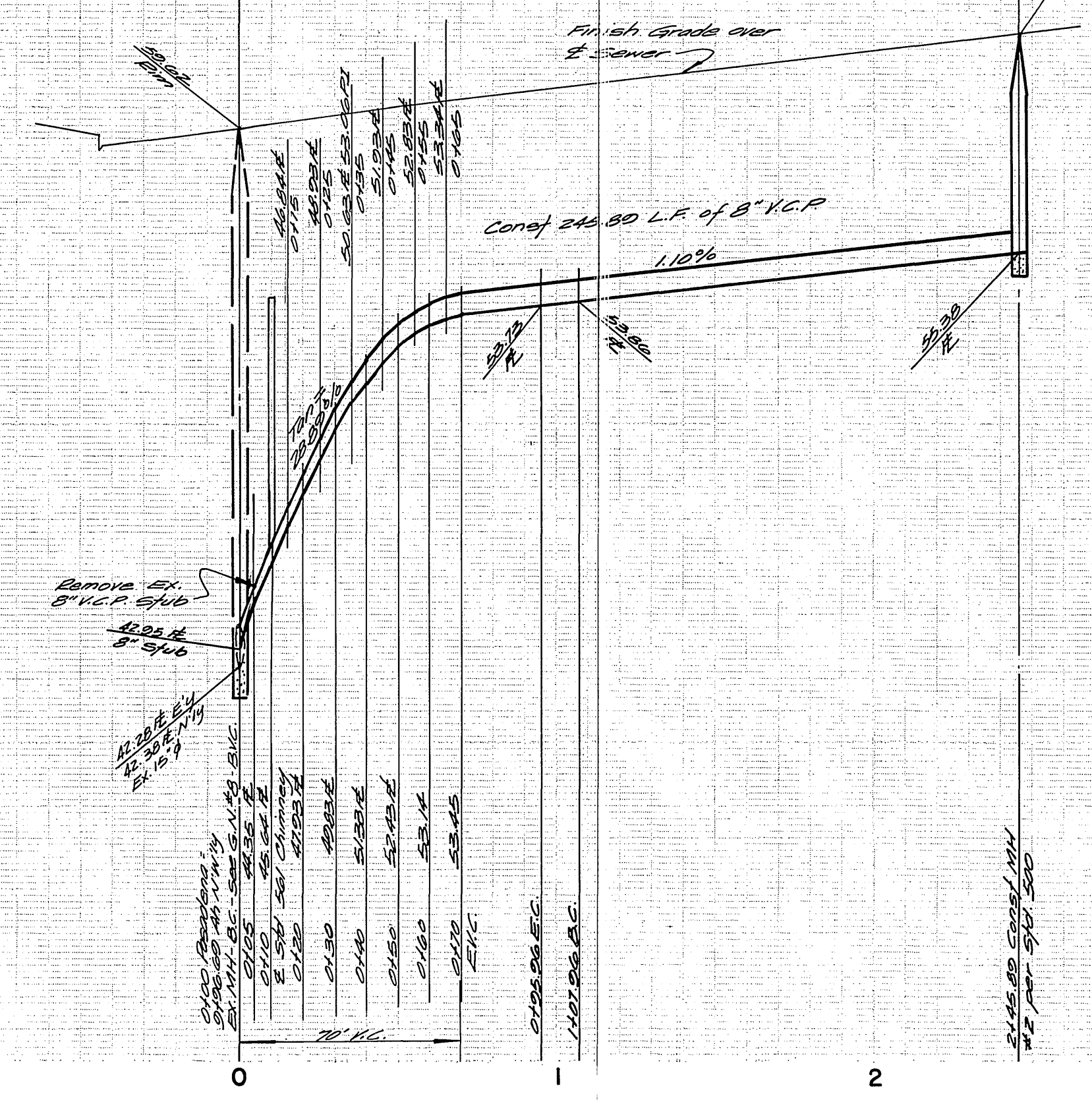
MARK	REVISIONS	APPR.	DATE

Approved By: *Walter A. Weber* Chief of Public Works  
Date: 7-7-76  
CITY OF RIVERSIDE, CALIFORNIA  
PUBLIC WORKS DEPARTMENT  
APPROVED BY: *Walter A. Weber* Chief of Public Works  
DATE: 7-7-76

ACCOUNT No. 75-194-B  
DRAWING NUMBER S-1044  
TRACT NO. 6537-2  
INDEX  
SHEET 1 OF 2

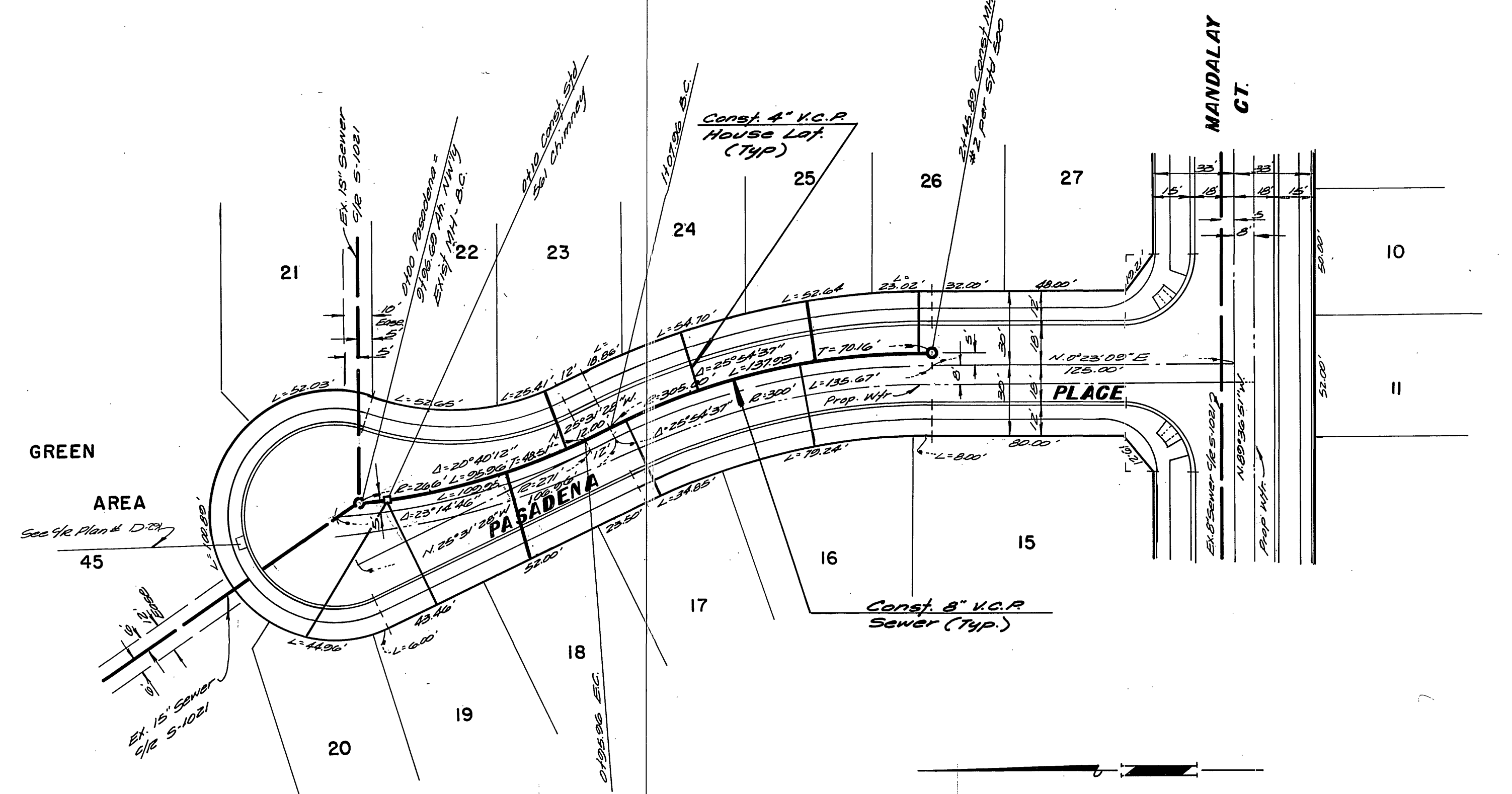
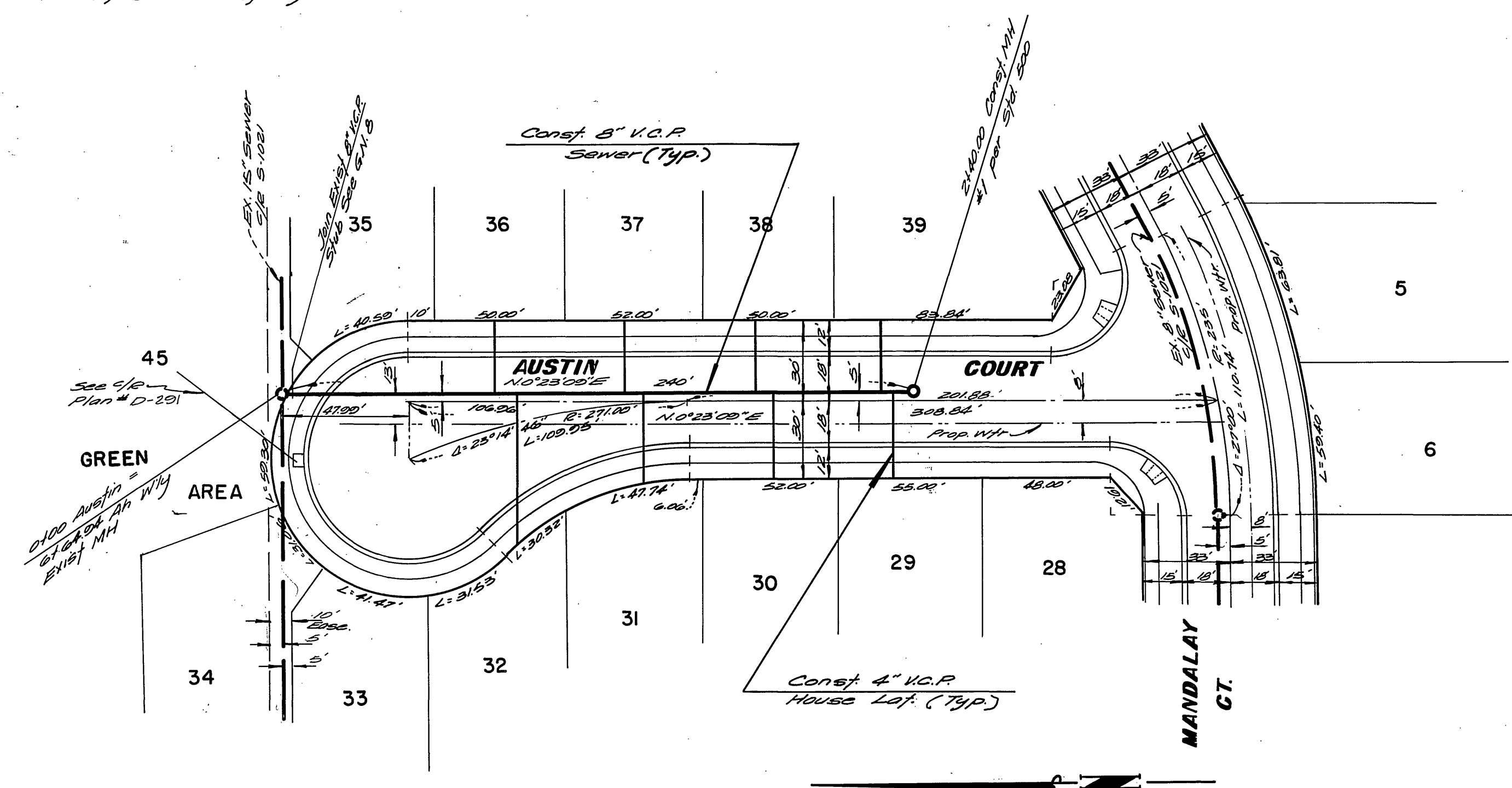


760  
750  
740



760  
750  
740

NOTE: See Sheet 1 for general notes and exist wyes.



**BENCH MARK**  
P.K. nail in East Curb on Tyler St., on E. Hayward produced per City of Riverside F.B. 70611 Elevation 778.21 (adjusted to s/c datum Elevation 778.05 in September 1973).

<b>ALBERT A. WEBB ASSOCIATES</b> CIVIL ENGINEERS RIVERSIDE, CALIFORNIA APPROVED BY: <i>L.O. Hancock</i> DATE: 4-6-76 R.E. No. 18052	MARK REVISIONS APPR. DATE DESIGNED BY: <i>ELT</i> DRAWN BY: <i>ELT</i> CHECKED BY: <i>WMA</i>	Approved By: <i>Walter J. DeLo</i> 7-7-76 Chief Engineer - Water Dept.	<b>CITY OF RIVERSIDE, CALIFORNIA</b> <b>PUBLIC WORKS DEPARTMENT</b> APPROVED BY: <i>Walter J. DeLo</i> DATE: 7/3 DIRECTOR OF PUBLIC WORKS	<b>SEWER PLAN AND PROFILE</b> <b>TRACT NO. 6537-2</b> <b>PASADENA PLACE</b> <b>AUSTIN COURT</b>	ACCOUNT No. DRAWING NUMBER <b>S-1044</b> SHEET <b>2</b> OF <b>2</b>
		DATE: 7-9-76	SCALE: Horiz. 1"=40' Vert. 1"=4' DATE: 7-9-76	SCALE: Horiz. 1"=40' Vert. 1"=4' DATE: 7-9-76	ACCOUNT No. DRAWING NUMBER <b>S-1044</b> SHEET <b>2</b> OF <b>2</b>