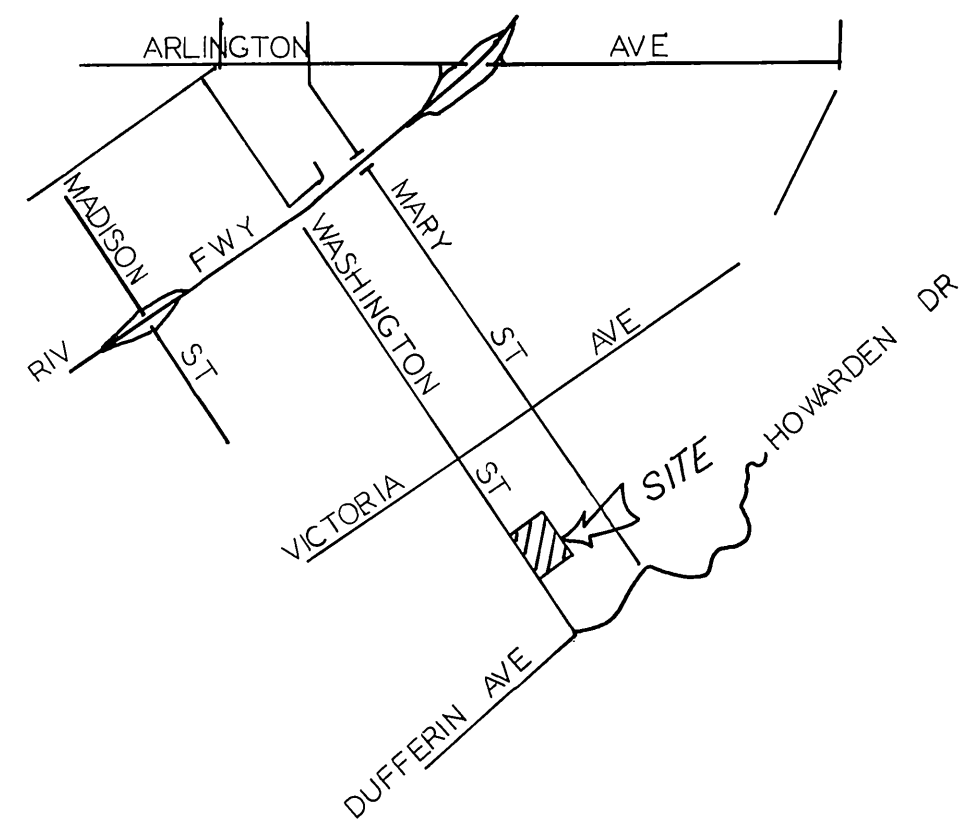


INDEX MAP
SCALE 1"=100'



LOCATION MAP
NO SCALE

GENERAL NOTES

1. Construction shall be in accordance with the Standard Specifications for Public Works Construction 1973 Edition and the City of Riverside Standard Drawings.
2. It shall be the responsibility of the Contractor to clear the Right of Way in accordance with the provisions of law as it affects each utility including irrigation lines and appurtenances and at no cost to the City.
3. Pipe shall be banded per Case I, Standard Drawing No. 452, unless otherwise specified on the plans.
4. Location of wyes and laterals to be determined in the field at the direction of the owner.
5. All stubs and laterals to be constructed in accordance with Standard Drawing No. 562. Stubs shall be plugged and capped.
6. Manhole frames and covers to be set as noted in profiles by sewer Contractor after final paving of streets.
7. Laterals are to be 4" V.C.P. and extended to property line.
8. Prior to construction of sewer, Contractor is to expose the existing sewer and contact the Engineer for verification of existing location and elevation.
9. Plugs shall be installed and will remain in place where the new sewer connects with the existing sewer until such time as the new sewer is accepted by the City.

NOTICE TO CONTRACTOR

The existence and location of underground utility pipes or structures shown on these plans are obtained by a search of the available records to the best of our knowledge. There are no existing utilities except as shown on these plans.

The Contractor is required to take due precautionary measures to protect the utility lines shown and any other lines not of record or not shown on these plans.

BENCH MARK 66-B ELEV = 944.502
BRASS DISK DOWN 8" IN CAPPED WELL
AT INTERSECTION OF MARY STREET & VICTORIA AVENUE.

ALBERT A. WEBB ASSOCIATES
CIVIL ENGINEERS
RIVERSIDE, CALIFORNIA
APPROVED BY: *E. M. Wall* DATE: 4/27/76
R.E. No. 9876

MARK	REVISIONS	APPR. DATE

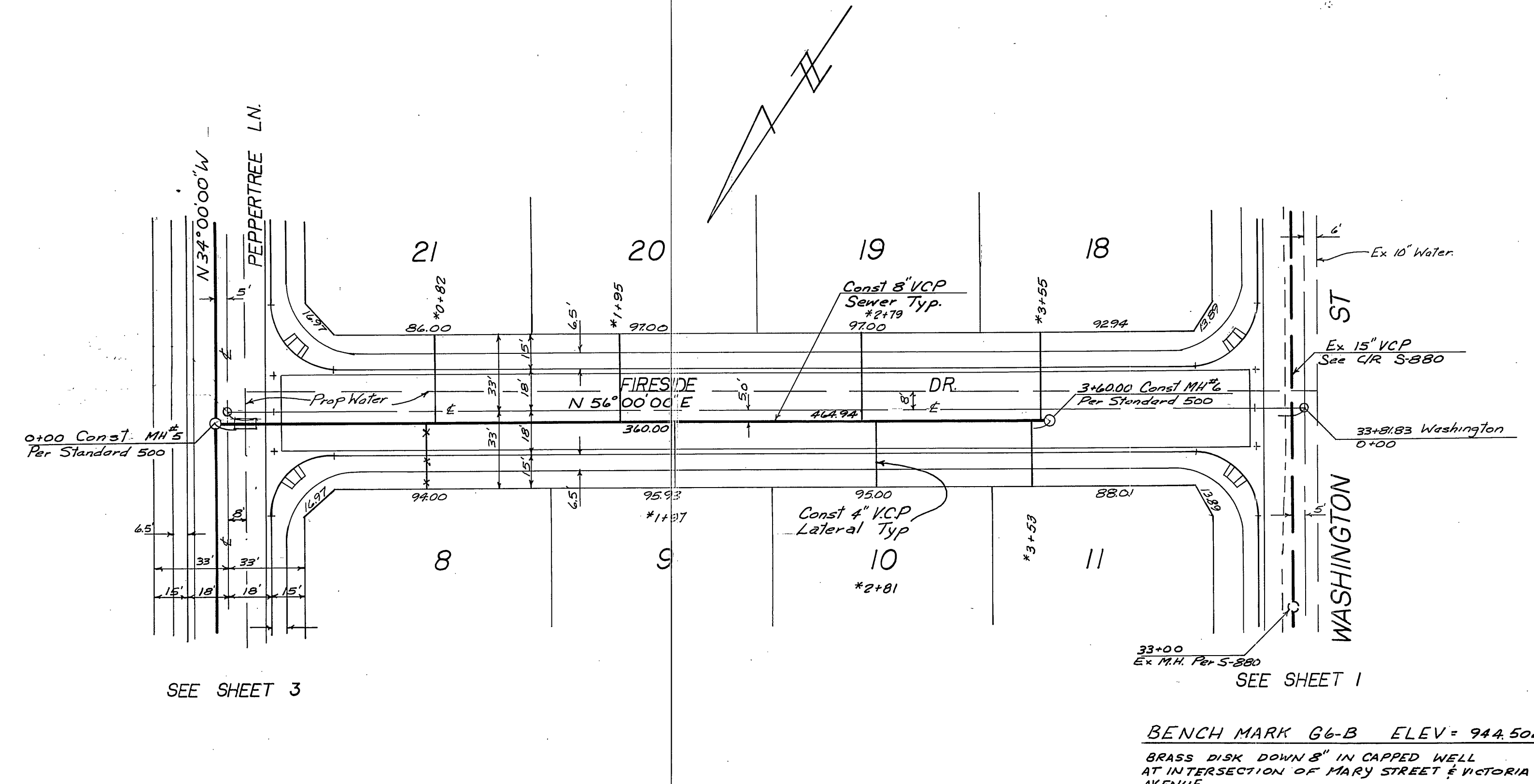
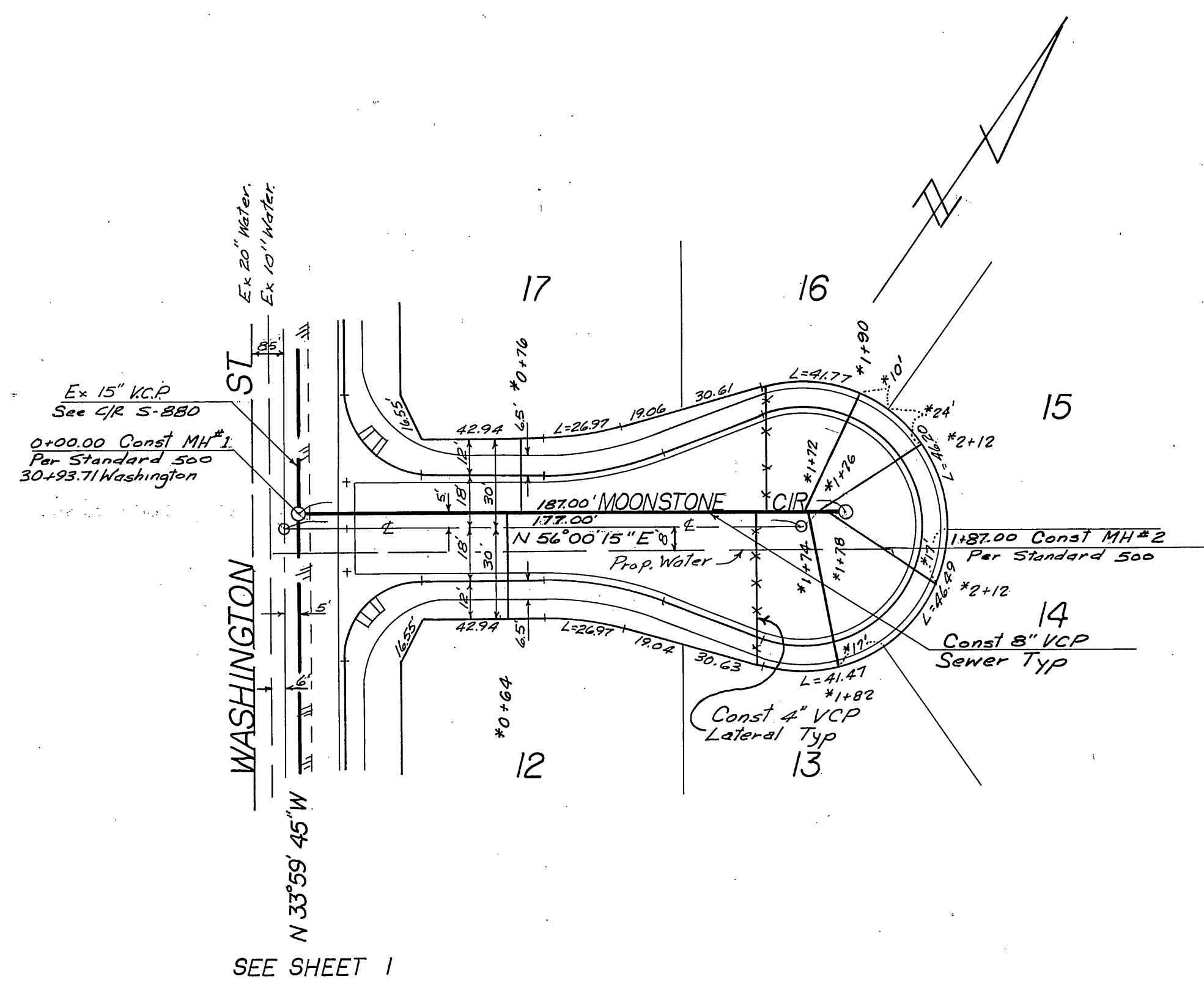
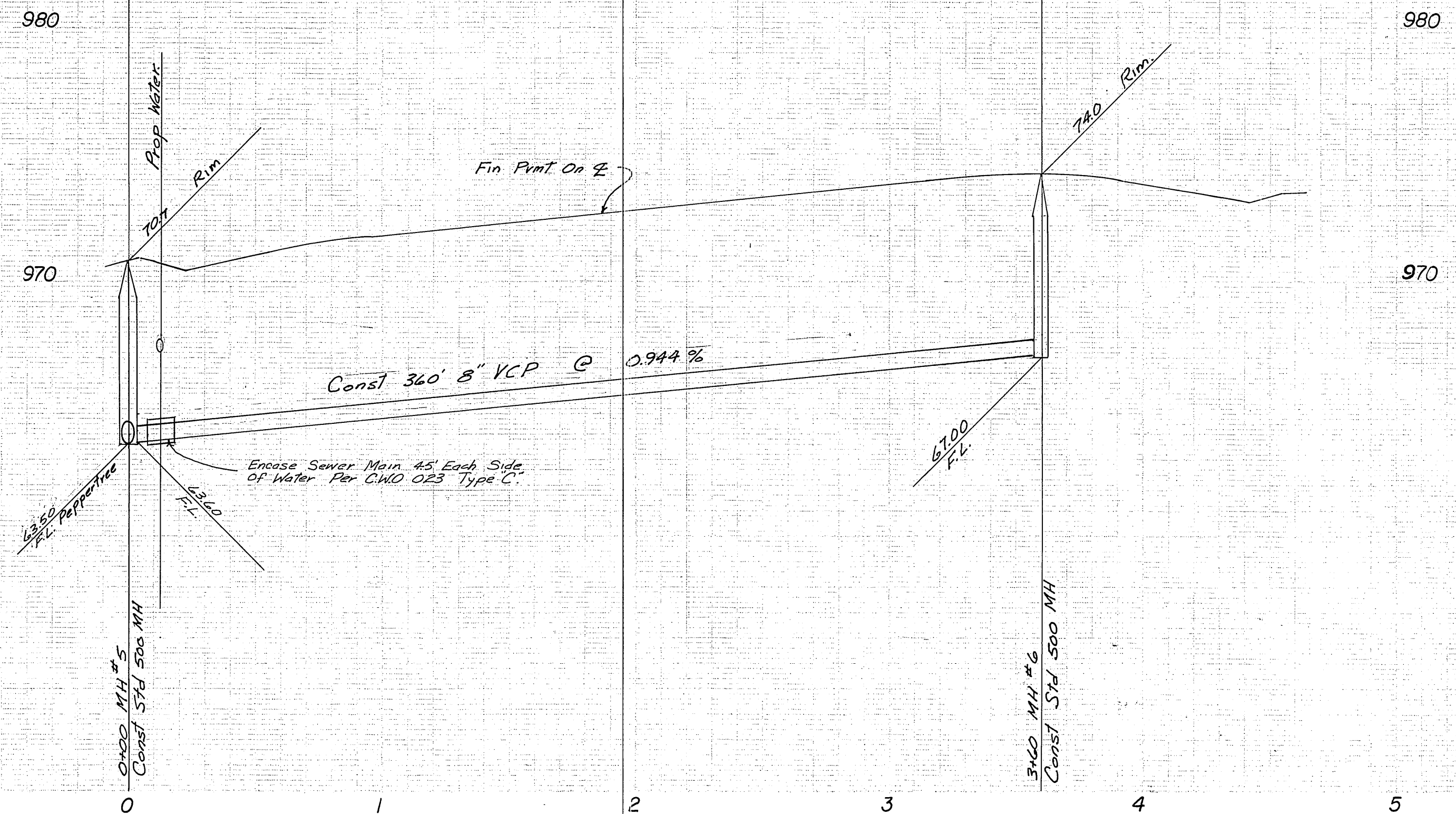
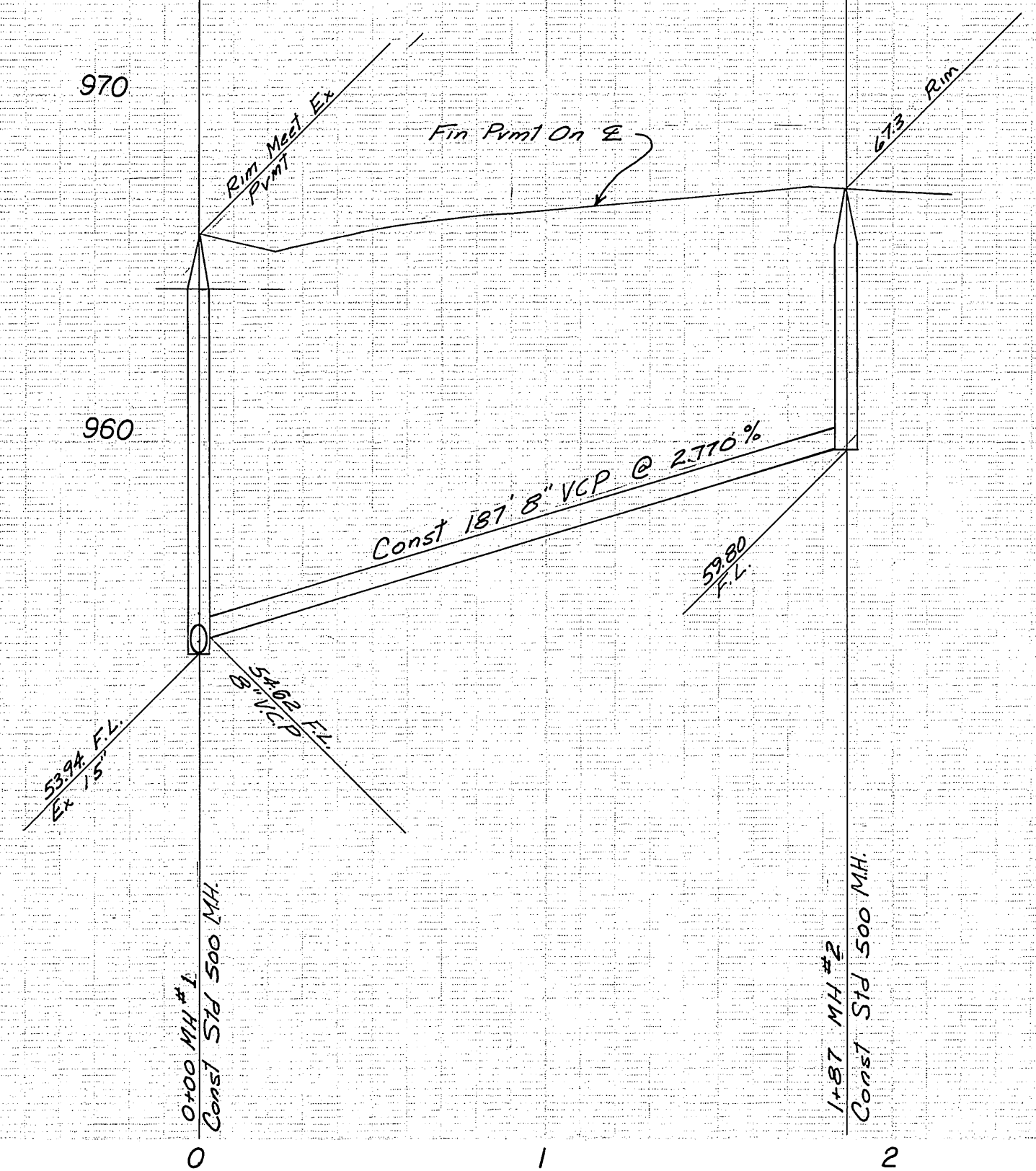
Approved By: *Wesley J. Jelen* 5-13-76
Chief Civil Engineer - Water Date

CITY OF RIVERSIDE, CALIFORNIA
PUBLIC WORKS DEPARTMENT
APPROVED BY: *[Signature]*
DIRECTOR OF PUBLIC WORKS
DATE: 7-14-76

*AS BUILT 3-77 KET	INDEXED H.D.
SEWER PLAN AND PROFILE	ACCOUNT No.
TRACT NO 5913-1	DRAWING NUMBER
INDEX SHEET	S-1046
SCALE: AS SHOWN	SHEET 1 OF 3
	76-152-B

W.D. 76-152 FOR County Wood Estates F.B. 1035

DESIGNED BY: REC. DRAWN BY: LRM. CHECKED BY: [Signature]



BENCH MARK G6-B ELEV = 944.502
BRASS DISK DOWN 8" IN CAPPED WELL
AT INTERSECTION OF MARY STREET & VICTORIA AVENUE.

ALBERT A. WEBB ASSOCIATES
CIVIL ENGINEERS
RIVERSIDE, CALIFORNIA
APPROVED BY: *Emil H. Wall* DATE: 4/27/76
R.E. No. 9876

MARK	REVISIONS	APPR.	DATE

Approved By: *Wally Adlan* 5-13-76
Chief Civil/Pls Engineer - Water Date
CITY OF RIVERSIDE, CALIFORNIA
PUBLIC WORKS DEPARTMENT
APPROVED BY: *Wally Adlan* 7-13
PRINCIPAL ENGINEER DATE
PARK DEPARTMENT
TRAFFIC DIVISION
CHIEF PUB WKS ENGR. DATE

*AS BUILT 3-77 KPT
SEWER PLAN & PROFILE
TRACT NO 5913-1
MOONSTONE CIR.
FIRESIDE DR.

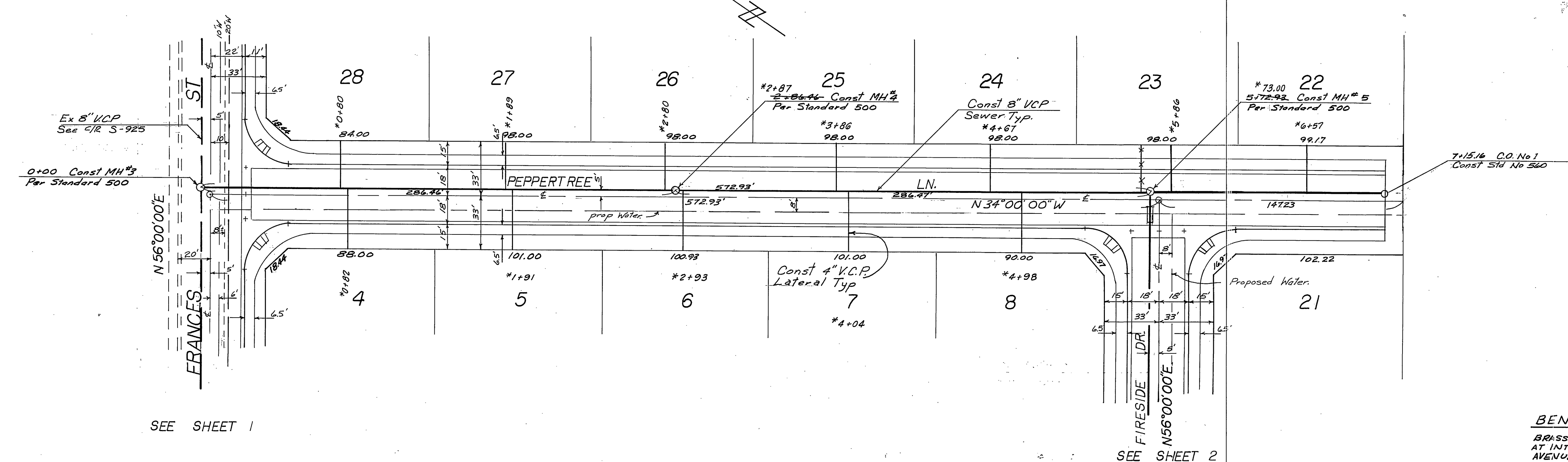
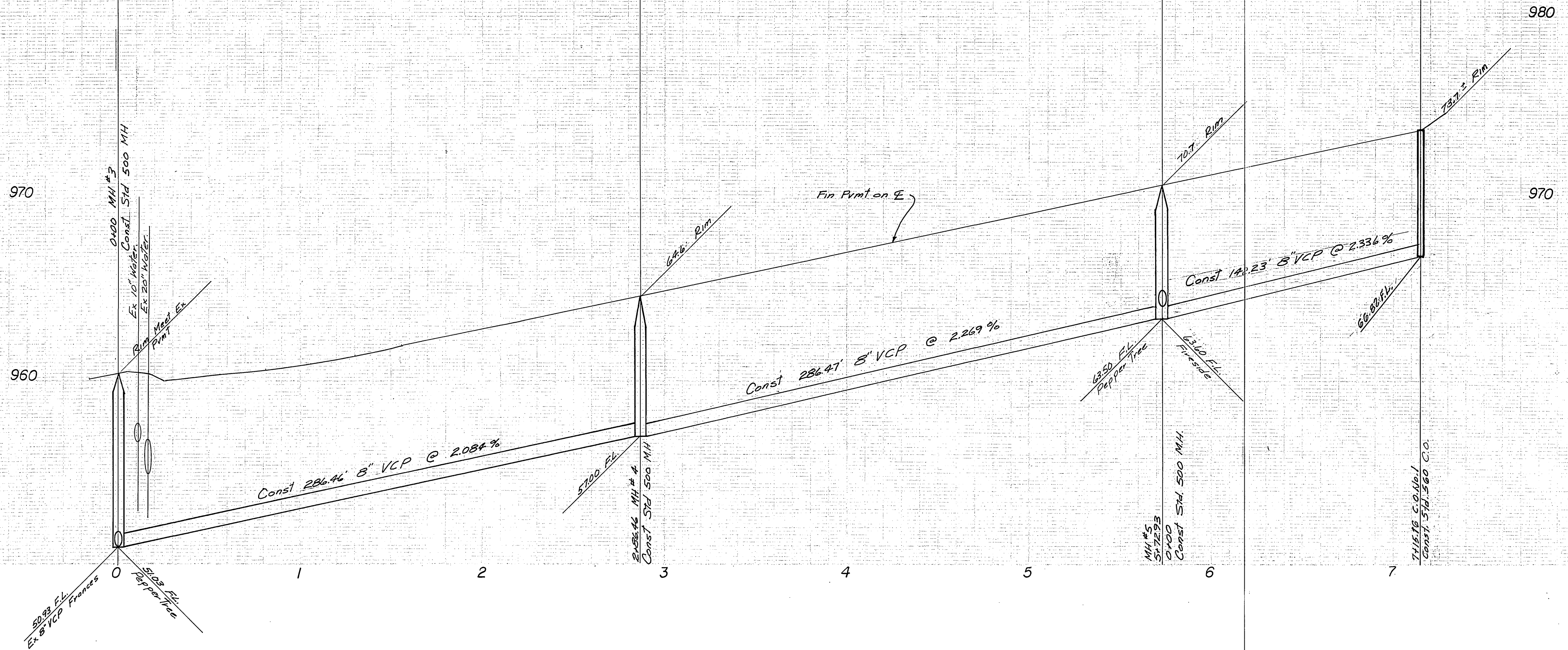
ACCOUNT No.
DRAWING NUMBER
S-1046
SHEET 2 OF 3
76-152-B

W.O. 76-152 FOR: Country Wood Estates F.B. 1035

DESIGNED BY: REC DRAWN BY: LRM CHECKED BY: [Signature]

DATE: 7-19-76

SCALE: HORIZ 1"=40' VERT 1"=4'



SEE SHEET 1

SEE SHEET 2

BENCH MARK G6-B ELEV = 944.502
BRASS DISK DOWN 8" IN CAPPED WELL
AT INTERSECTION OF MARY STREET & VICTORIA AVENUE.

ALBERT A. WEBB ASSOCIATES CIVIL ENGINEERS RIVERSIDE, CALIFORNIA APPROVED BY: <i>Albert A. Webb</i> DATE: 4/27/76 R.E. No. 9876	MARK REVISIONS APPR. DATE	Approved By: <i>William J. ...</i> 5-13-76 Chief Engineer - Water	CITY OF RIVERSIDE, CALIFORNIA PUBLIC WORKS DEPARTMENT	*AS BUILT 377 KFT SEWER PLAN & PROFILE TRACT NO 5913-1 PEPPERTREE LN.	ACCOUNT No. DRAWING NUMBER S-1046
		APPROVED BY: <i>...</i> DATE: 7-15-76 PRINCIPAL ENGINEER PARK DEPARTMENT TRAFFIC DIVISION CHIEF PUB. WKS. ENGR.	APPROVED BY: <i>...</i> DATE: 7-19-76 DIRECTOR OF PUBLIC WORKS	SCALE: HORIZ 1"=40' VERT 1"=4'	SHEET 3 OF 3 76-152-B