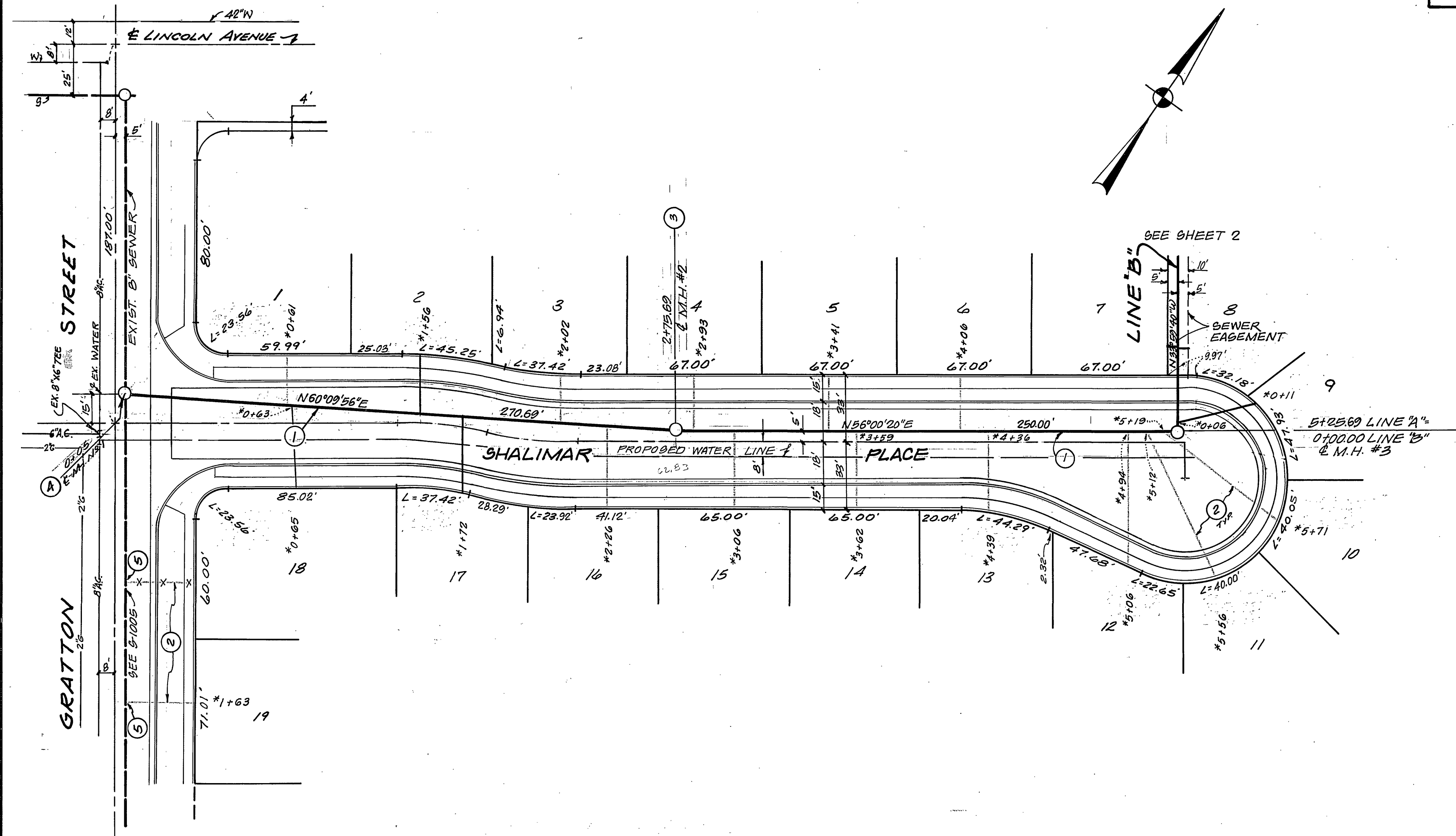


PROFILE
 HORIZ.: 1"=40'
 SCALE: VERT.: 1"=4'
PLAN
 SCALE: 1"=40'



CONSTRUCTION NOTES

- ① - CONST. 8" V.C.P. SEWER MAIN
- ② - CONST. 4" V.C.P. HOUSE LATERAL
- ③ - CONST. MANHOLE PER STD. PLAN #500
- ④ - BREAK INTO EXIST. SEWER MAIN AND CONST. STD. MANHOLE PER STD. PLAN #500. CONTRACTOR SHALL VERIFY ELEV. PRIOR TO ANY CONSTRUCTION.
- ⑤ - SADDLE EXIST. 8" SEWER MAIN

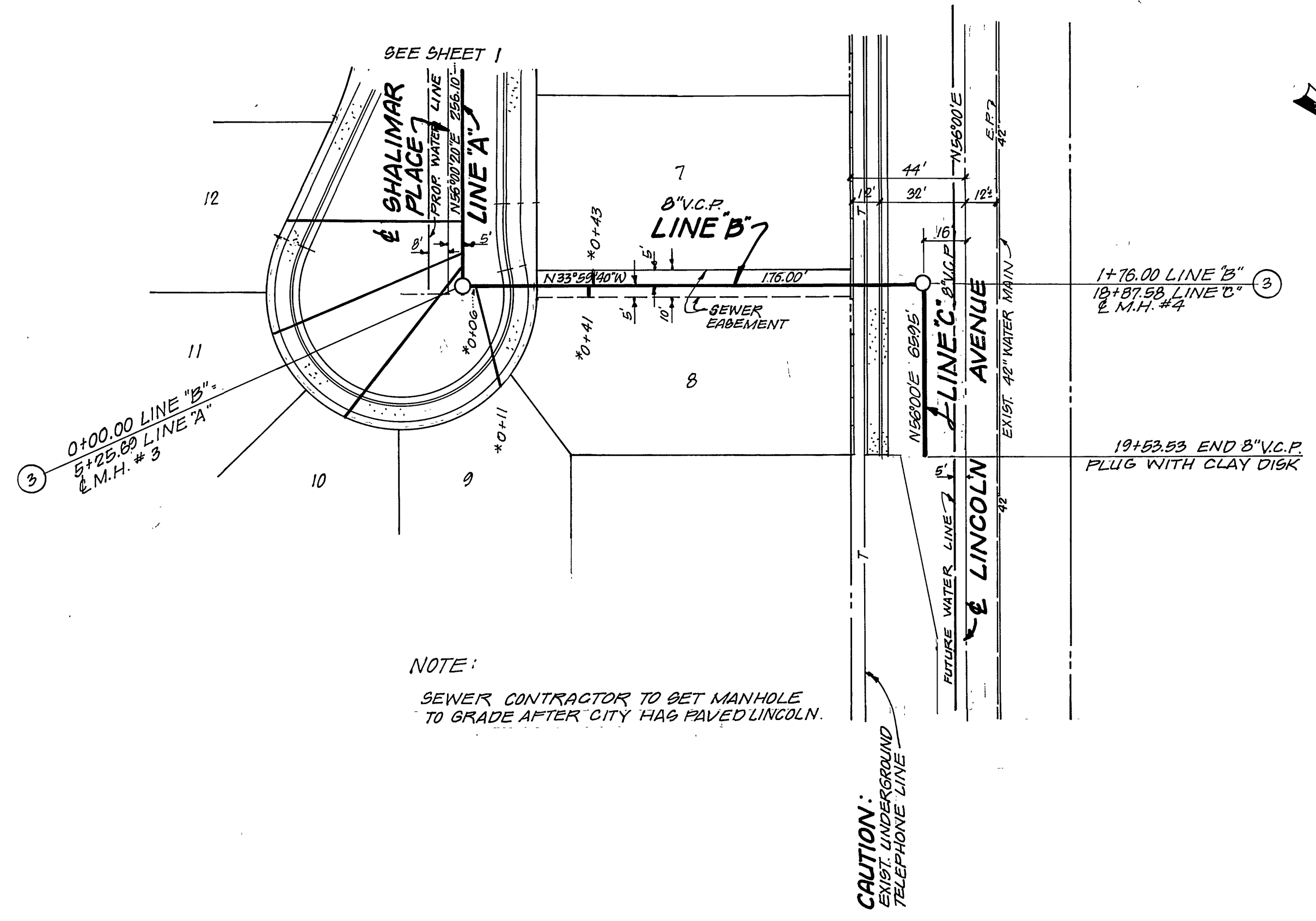
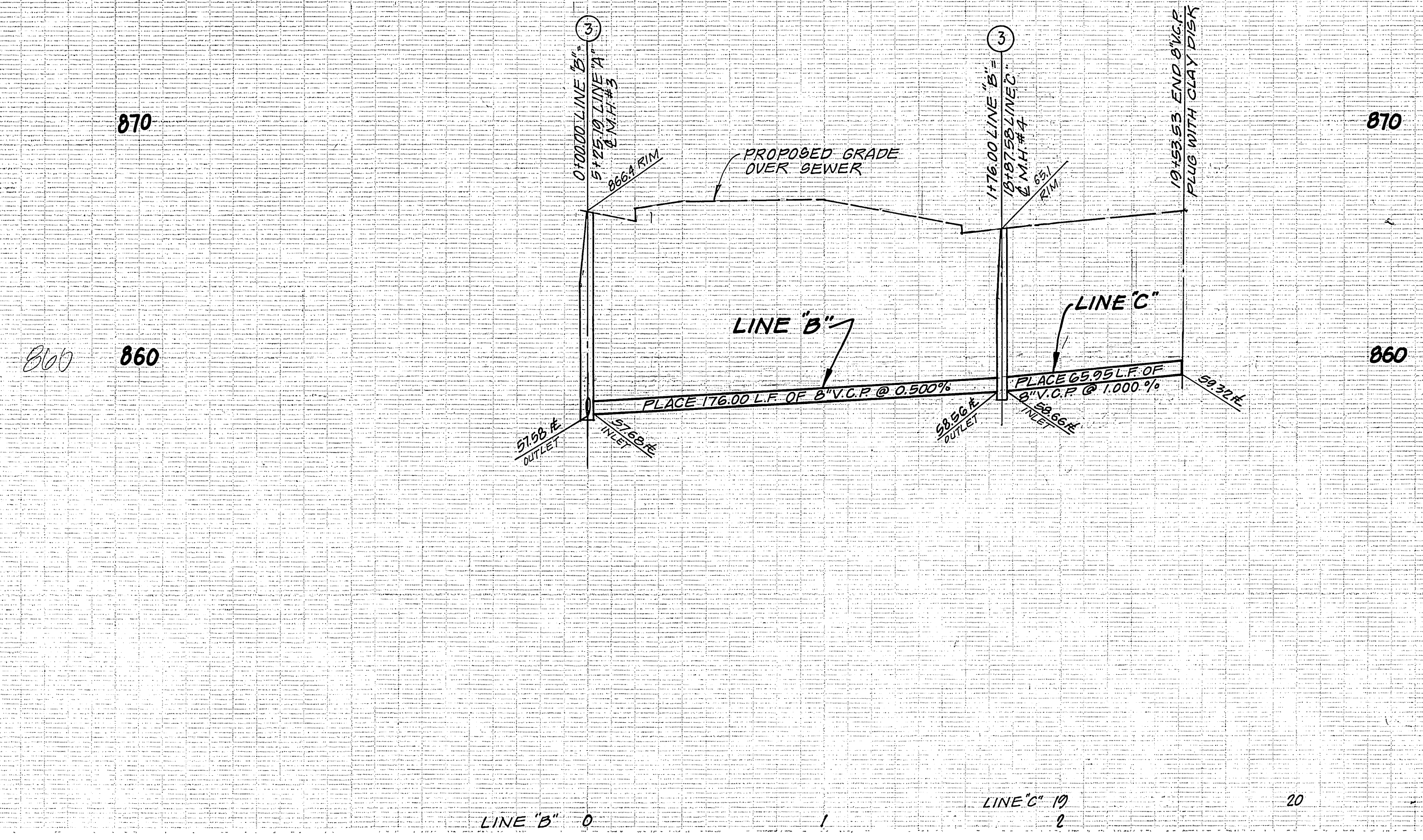
BENCH MARK

CITY OF RIVERSIDE B.M. # F-5-H, BEING A P.R. NAIL IN R.W.C. CANAL HEADWALL ON W'LY SIDE OF MONROE STREET. ELEV. 845.599, REF. C.R.P. 3. 09/1/33

GENERAL NOTES

1. It shall be the responsibility of the contractor to clear the right of way in accordance with the provisions of law as it affects each utility including irrigation lines and appurtenances and at no cost to the city.
2. Construction shall be in accordance with the City of Riverside, Dept. Public Works, Standard Drawings, and the Standard Specifications for Public Works Construction, 1973 Edition.
3. Location of laterals to be determined in the field at the direction of the owner. Avoid conflict with proposed and/or existing facilities.
4. Contractor is to verify existing sewer elevation prior to construction.
5. The sewer contractor shall adjust manholes to final grade after paving is completed.
6. A plug shall be installed and will remain in place where the new sewer connects with the existing sewer until the new sewer is accepted by the city.

APPROVED BY: CHIEF UTILITIES ENGINEER, WATER DATE 7-6-76	J. F. DAVIDSON ASSOCIATES CIVIL ENGINEERS - SURVEYORS - PLANNERS RIVERSIDE, CALIFORNIA APPROVED BY R.E. No. 17550	CITY OF RIVERSIDE, CALIFORNIA PUBLIC WORKS DEPARTMENT APPROVED BY DIRECTOR OF PUBLIC WORKS DATE 7-19-76	*AS BUILT 3-77 KBT SEWER PLAN AND PROFILE TRACT NO 5823 SHALIMAR PLACE SCALE: HORIZ. 1"=40' VERT. 1"=4' ACCOUNT NO. DRAWING NUMBER S-1047 SHEET 1 OF 2
---	--	--	--



NOTE:
SEWER CONTRACTOR TO SET MANHOLE
TO GRADE AFTER CITY HAS PAVED LINCOLN.

BENCH MARK
CITY OF RIVERSIDE B.M. # F.S.H., BEING A P.K. NAIL
IN R.W.C. CANAL HEADWALL ON W'LY. SIDE OF MONROE
STREET. ELEV. 848.599, REF. C.R.F.P. 830/83

APPROVED BY: CHIEF UTILITIES ENGINEER, WATER DATE: 7-6-76		J. F. DAVIDSON ASSOCIATES CIVIL ENGINEERS - SURVEYORS - PLANNERS RIVERSIDE, CALIFORNIA APPROVED BY: P.E. No. 17550-1 DATE: 4/21/76		CITY OF RIVERSIDE, CALIFORNIA DEPARTMENT OF PUBLIC WORKS APPROVED BY: DIRECTOR OF PUBLIC WORKS DATE: 7-19-76		*AS BUILT 3-77 KBT SEWER PLAN AND PROFILE TRACT NO 5823 SHALIMAR PLACE TO LINCOLN AVENUE PROJECT NO. S-1047 SHEET 2 OF 2 FILE NO.	
DESIGNED BY:	DRAWN BY:	CHECKED BY: <i>ADH</i>	DATE:	DATE:	HORIZ. SCALE: 1" = 40'	VERT. SCALE: 1" = 4'	FILE NO.