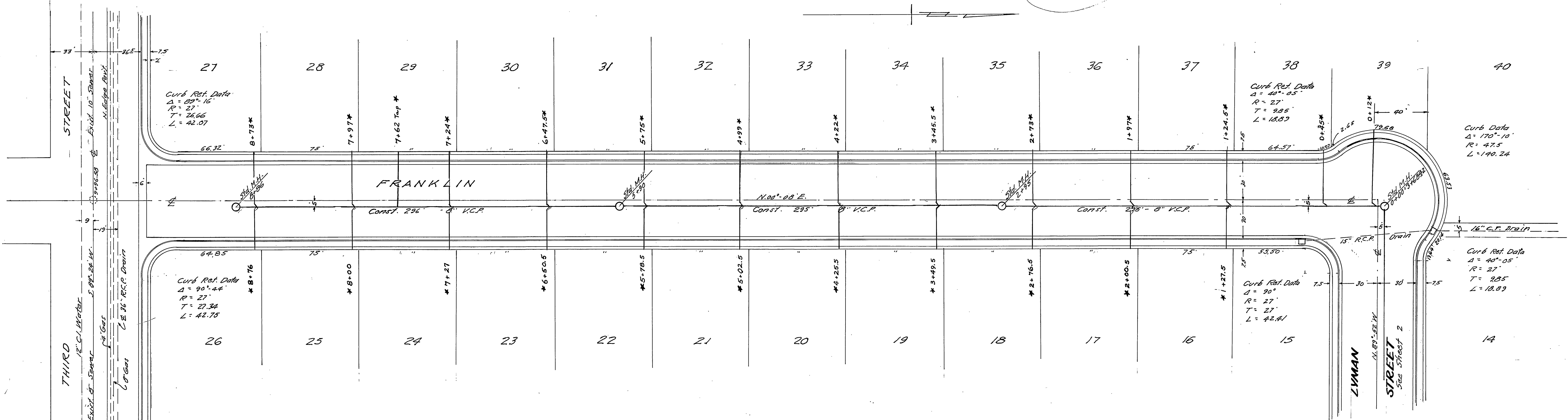


Q=0.7



ESTIMATE OF QUANTITIES
1254.42 lin. ft. 8" V.C. Clay Pipe
23 - 8" V.C. Manholes
1118.5 lin. ft. 4" V.C. Clay Pipe Ho. Lat.

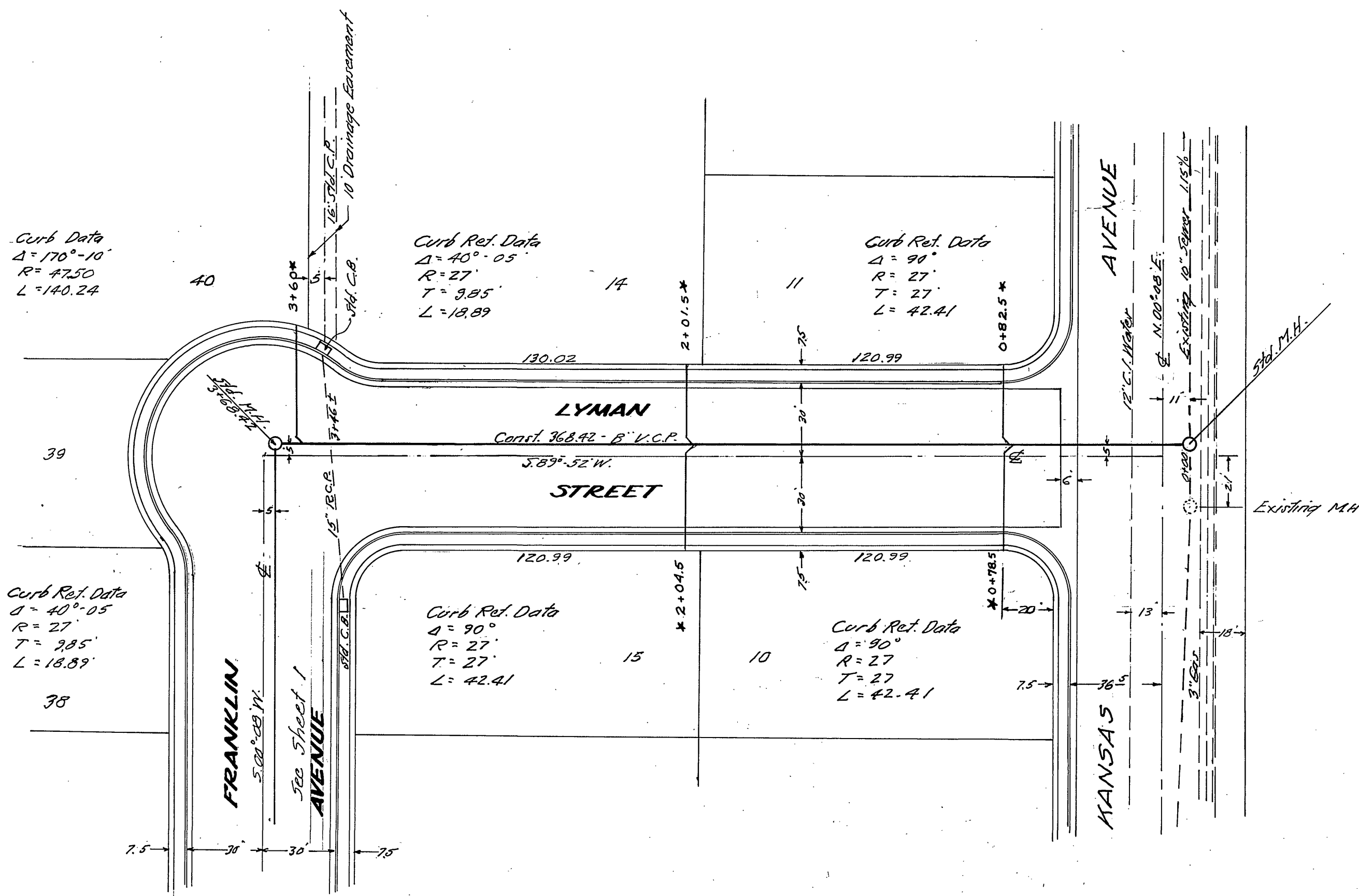
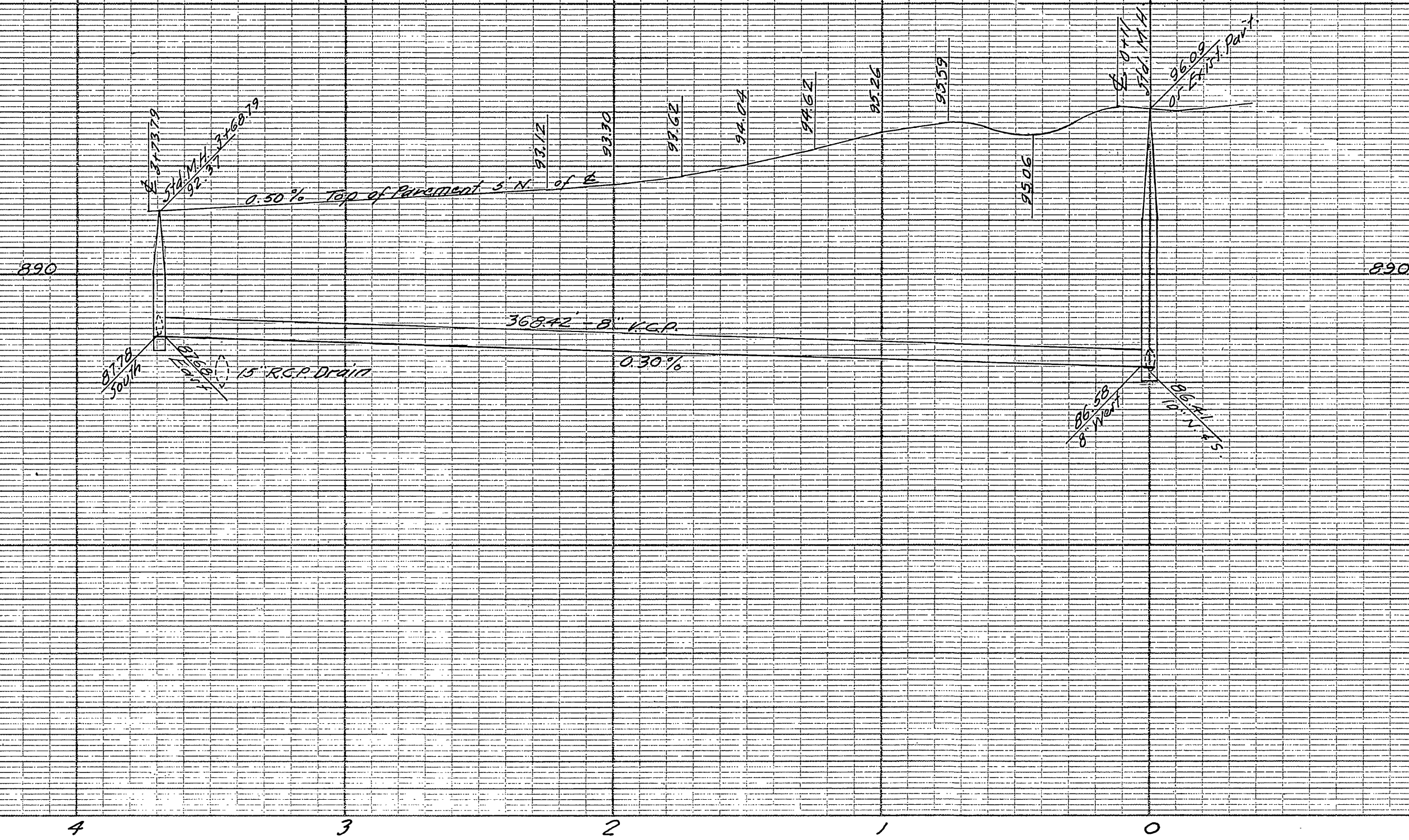
NOTE: Locate sewer laterals 5 ft. more or less south of north lot lines, unless otherwise shown.

B.M. Spike and Lead in
S.W. Curb Return at
Park Ave. & Third St.
Elev. = 890.15

Lee S. Whidden 11-6-57

SEWER
FRANKLIN STREET
NON-RESIDENTIAL M-2 GENERAL
MANUFACTURING SUB. NO. M-12 UNIT 2
1" = 40' 1" = 4'

Martinez S-105



Curb Ref. Data
 $\Delta = 170^{\circ} - 10'$
 $R = 472.50$
 $L = 140.24$

Curb Ref. Data
 $\Delta = 40^{\circ} - 05'$
 $R = 27'$
 $T = 3.85'$
 $L = 18.89'$

Curb Ref. Data
 $\Delta = 90^{\circ}$
 $R = 27'$
 $T = 27'$
 $L = 42.41'$

Curb Ref. Data
 $\Delta = 40^{\circ} - 05'$
 $R = 27'$
 $T = 3.85'$
 $L = 18.89'$

Curb Ref. Data
 $\Delta = 90^{\circ}$
 $R = 27'$
 $T = 27'$
 $L = 42.41'$

Curb Ref. Data
 $\Delta = 90^{\circ}$
 $R = 27'$
 $T = 27'$
 $L = 42.41'$

B.M. Spike and Lead in
S.W. Curb Return at
Park Ave. & Third St.
Elev. = 890.15

NOTE: Locate sewer laterals 5 ft.
more or less west of east
lot lines, unless otherwise shown.

DAVIDSON-CIVIL ENGINEER
RIVERSIDE, CALIFORNIA
APPROVED *[Signature]* 11-6-57
CITY OF RIVERSIDE, CALIFORNIA
DEPARTMENT OF PUBLIC WORKS
SEWER
LYMAN STREET
NON-RESIDENTIAL SUB. NO. M-12 UNIT 2
1" = 40'