

**GENERAL NOTES**

1. Construction shall be in accordance with the Standard Specifications for Public Works Construction 1976 Edition and the City of Riverside Standard Drawings.
2. It shall be the responsibility of the Contractor to clear the Right of Way in accordance with the provisions of the City of Riverside Ordinance including irrigation lines and appurtenances and at no cost to the City.
3. Pipe shall be laid per Case, Standard Drawing No 452, unless otherwise specified on the plans.
4. Location of pipes and laterals to be determined in the field at the direction of the owner.
5. All subs and laterals to be constructed in accordance with Standard Drawing No 562. Subs shall be plugged and capped.
6. Manhole frames and covers to be set as noted in profiles by sewer Contractor after final paving of streets.
7. Laterals are to be 4" VCR and extended to property line.
8. Prior to construction of sewer Contractor is to expose the existing sewer and contact the Engineer for verification of existing location and elevation.
9. Plugs shall be installed and will remain in place where the new sewer connects with the existing sewer until such time as the new sewer is accepted by the City.

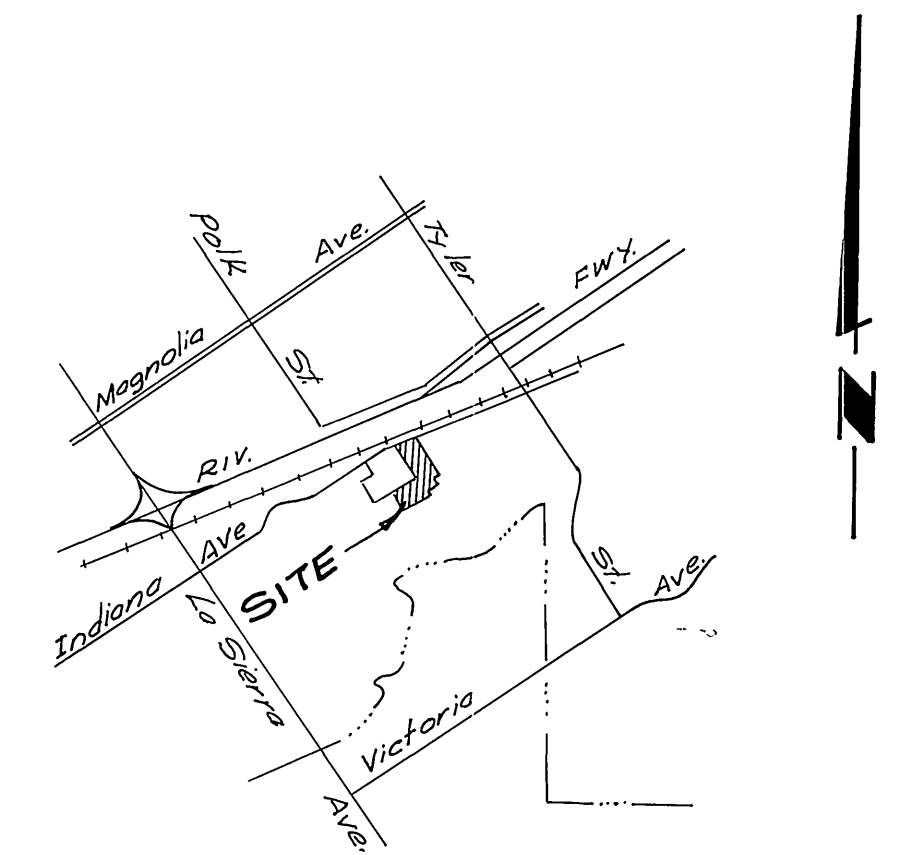
**NOTICE TO CONTRACTOR**

The existence and location of underground utility pipes or structures shown on these plans are obtained by a search of the available records to the best of our knowledge there are no existing utilities except as shown on these plans.

The Contractor is required to take the precautionary measures to protect the utility lines shown and any other lines not shown or not shown on these plans.

**BENCH MARK**

Brass Disc Set in Concrete Stamped 601-25-68 on West Side of Tyler Street 250' North of Indiana Avenue and 1/2 Mile East of Bridge No 55-419  
Elev. 786.605



**LOCATION MAP**  
No Scale.

**INDEX MAP**  
SCALE 1"=100'

Approved  
*Walter Taylor*  
Chief Utilities Engr.-Water  
8-17-76  
Date

ALBERT A. WEBB ASSOCIATES  
CIVIL ENGINEERS  
RIVERSIDE, CALIFORNIA  
APPROVED BY *Albert A. Webb* DATE 7/23/76  
R.E. No. 3876  
W.O. 76-105 FOR Pace Setter Homes F.B. 1037

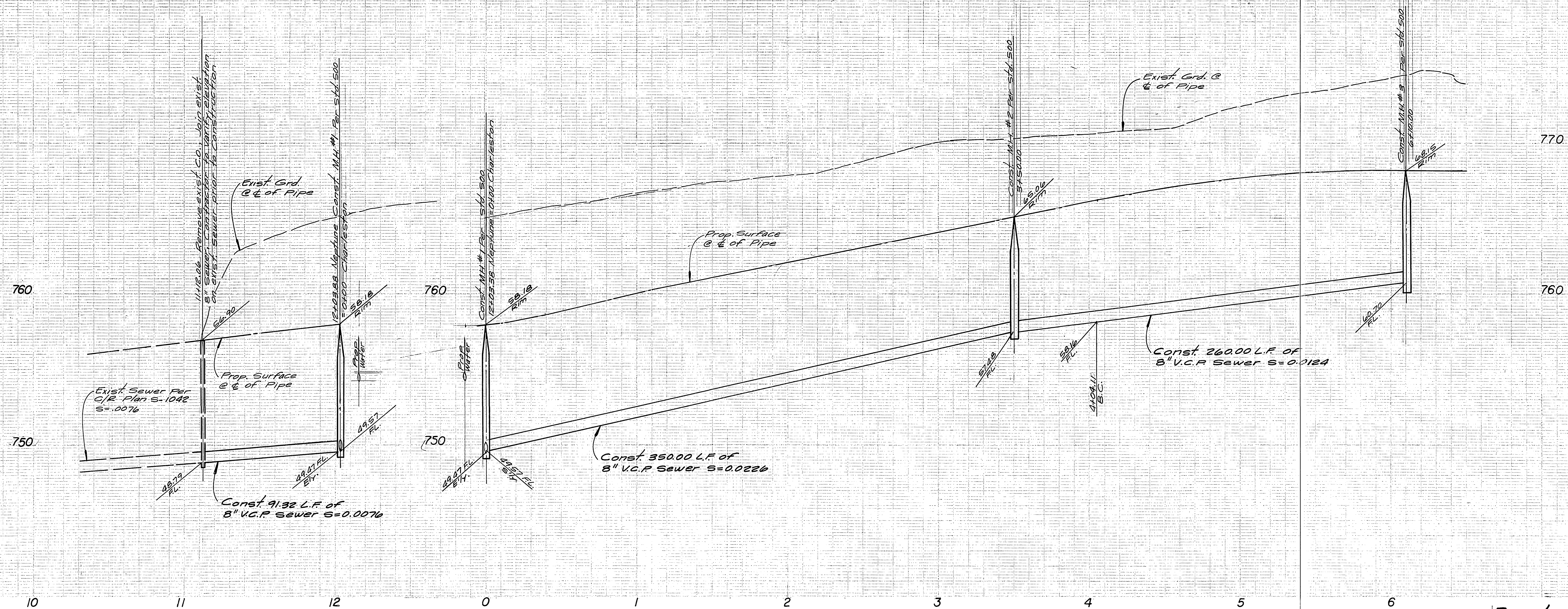
MARK	REVISIONS	APPR.	DATE

CITY OF RIVERSIDE, CALIFORNIA  
PUBLIC WORKS DEPARTMENT  
APPROVED BY *John S. ...*  
PRINCIPAL ENGINEER  
PARK DEPARTMENT  
TRAFFIC DIVISION  
CHIEF PUB. WKS. ENGR.  
DATE 10-26-76

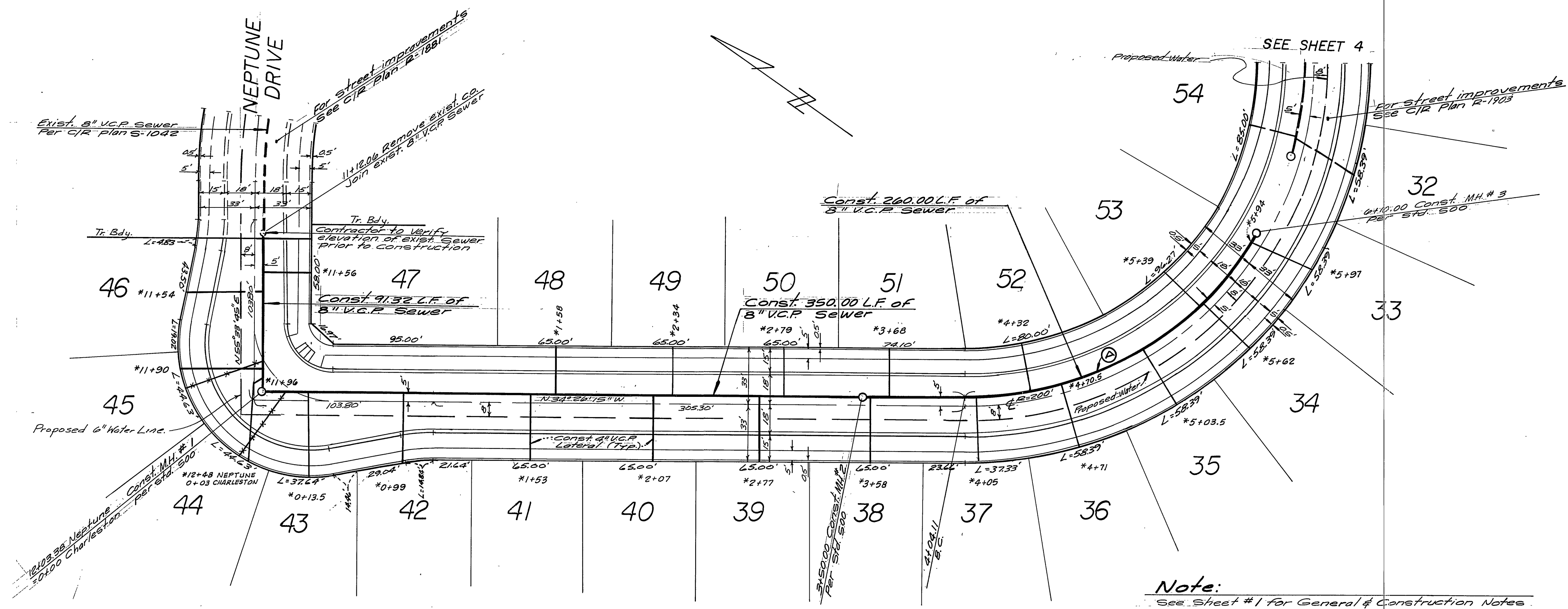
\*AS BUILT 3-77 MBT  
SEWER PLAN & PROFILE  
TRACT NO 6070  
INDEX SHEET  
SCALE: AS SHOWN

INDEXED MAP  
ACCOUNT No. 76-105  
DRAWING NUMBER  
S-1050  
SHEET 1 OF 4  
76-105-B





**Bench Mark:**  
 Brass Disc set in concrete, stamped 49-25-66,  
 on west side of Tyler Street 250' North of Indiana  
 Avenue and 1/2' Northeast of Bridge No 56-419.  
 Elev. 754.65



CURVE DATA				
NA	Δ	R	L	T
Ⓐ	60°12'17"	195.00'	204.90'	113.05'

**Note:**  
 See Sheet #1 for General & Construction Notes

CHARLESTON DRIVE

Approved: *Walter H. Hahn*  
 Chief Utilities Engr. - Water  
 Date: 7/27/76

ALBERT A. WEBB ASSOCIATES  
 CIVIL ENGINEERS  
 RIVERSIDE, CALIFORNIA  
 APPROVED BY: *Carl N. Webb* DATE: 7/23/76  
 R.E. No. 3876

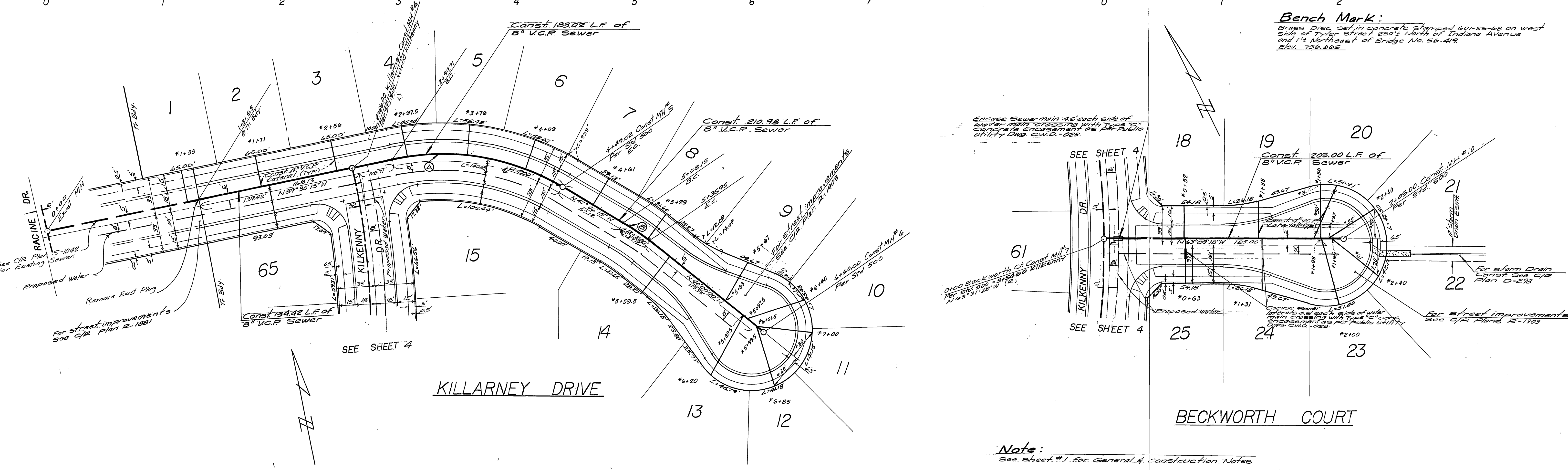
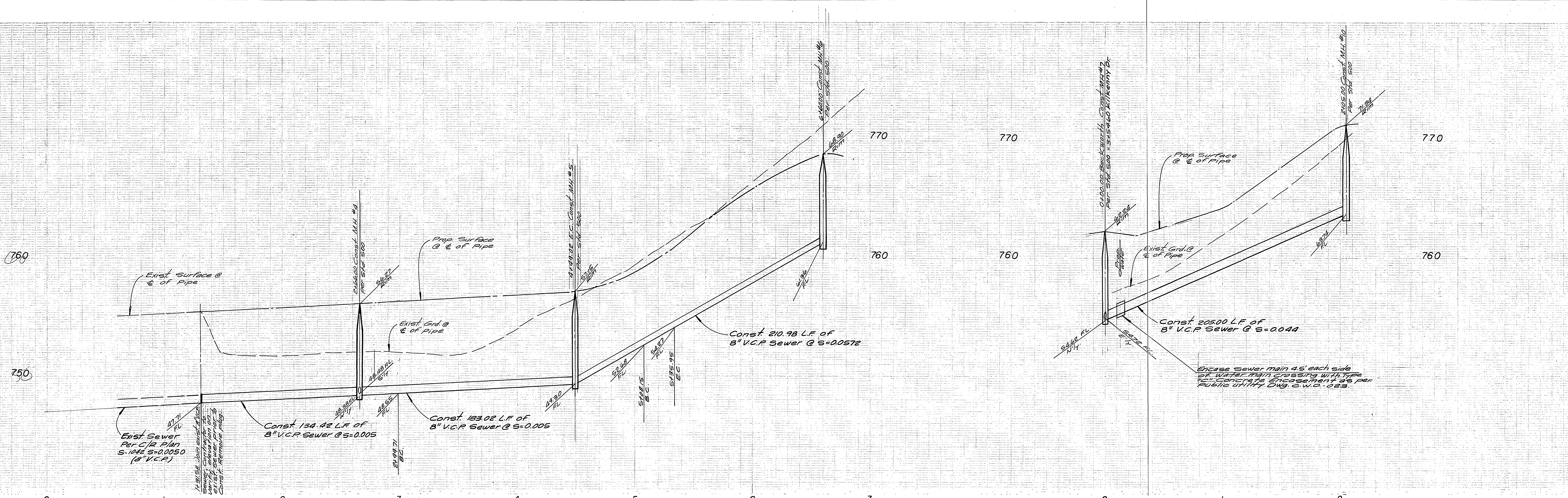
MARK	REVISIONS	APPR.	DATE

CITY OF RIVERSIDE, CALIFORNIA  
 PUBLIC WORKS DEPARTMENT  
 APPROVED BY: *James M. ...*  
 DIRECTOR OF PUBLIC WORKS  
 DATE: 10-26-76

\*AS BUILT 3-77 KPT  
 SEWER PLAN & PROFILE  
 TRACT NO 6070  
 NEPTUNE DRIVE  
 CHARLESTON DRIVE  
 SCALE: HORIZ. 1"=20', VERT. 1"=4'

ACCOUNT No. 76-105  
 DRAWING NUMBER  
**S-1050**  
 SHEET 2 OF 4  
 76-105B





**Bench Mark:**  
 Brass Disc set in concrete stamped 6-1-25-68 on west side of Tyler Street 250' North of Indiana Avenue and 1/4 North of Bridge No. 56-419. Elev. 756.665

**Note:**  
 See sheet #1 for General & Construction Notes

CURVE DATA			
No	R	L	T
Ⓐ	41° 44' 00"	205.00'	149.32'
Ⓑ	07° 46' 15"	205.00'	27.80'

Approved: *Wally Styler*  
 Chief Utilities Engr. - Water  
 8-17-76  
 Date

ALBERT A. WEBB ASSOCIATES  
 CIVIL ENGINEERS  
 RIVERSIDE, CALIFORNIA  
 APPROVED BY: *D. N. Webb* DATE 7/23/76  
 R.E. No. 7876

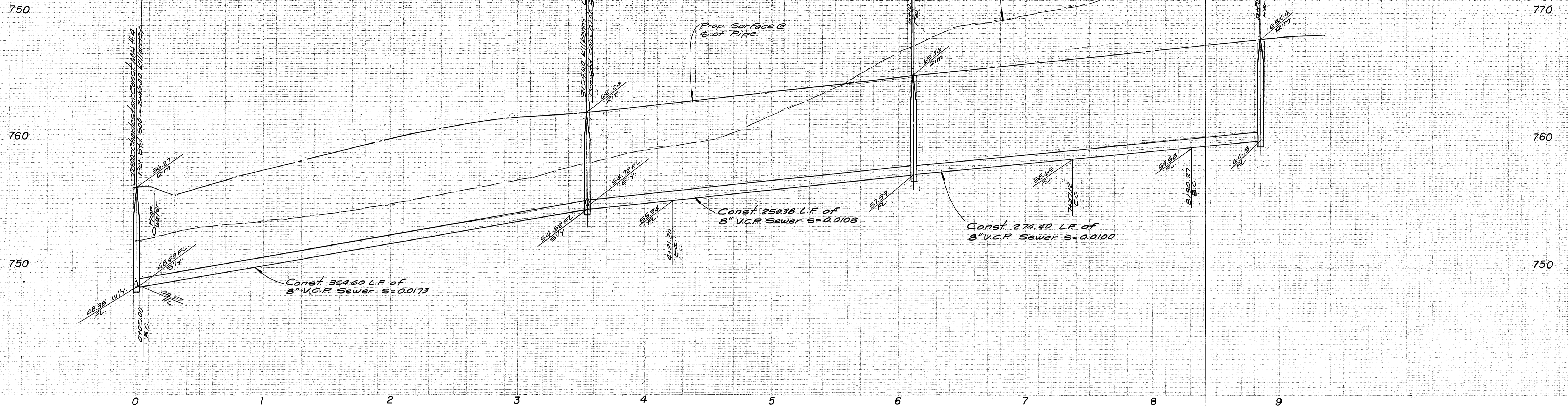
MARK	REVISIONS	APPR. DATE

CITY OF RIVERSIDE, CALIFORNIA  
 PUBLIC WORKS DEPARTMENT  
 APPROVED BY: *[Signature]* DATE 10/26/75  
 PRINCIPAL ENGINEER  
 PARK DEPARTMENT  
 TRAFFIC DIVISION  
 CHIEF PUB. WORKS ENGR.

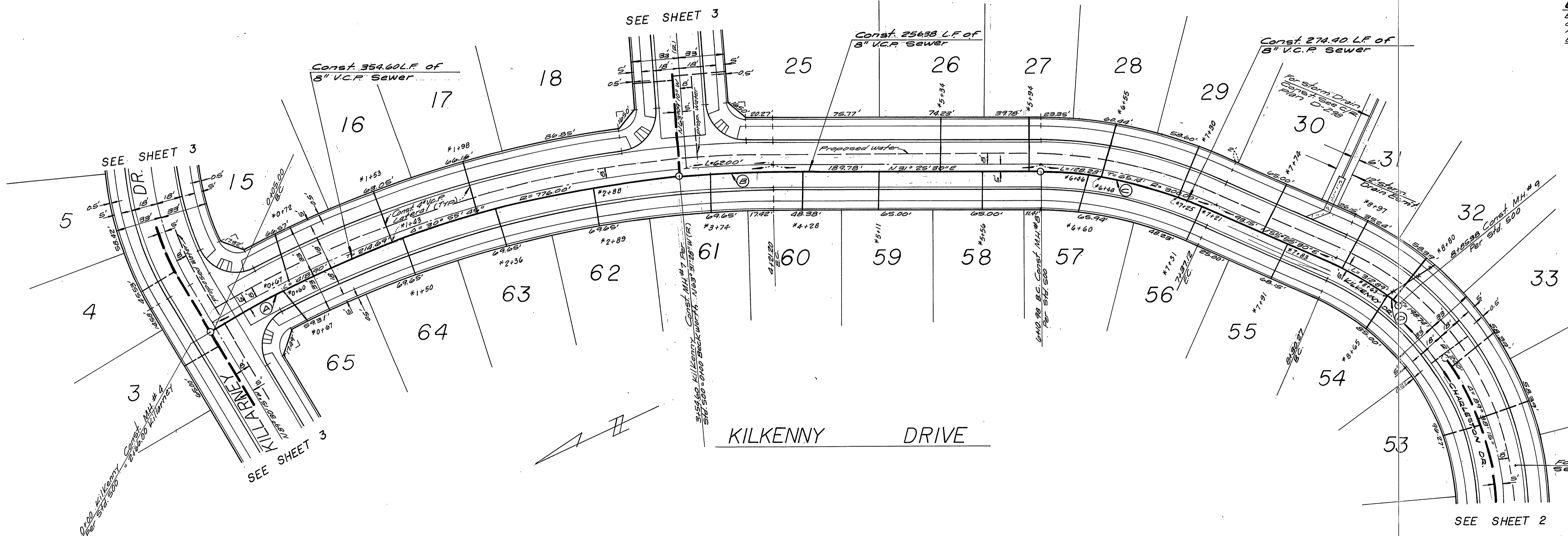
SEWER PLAN & PROFILE  
 TRACT 6070  
 KILLARNEY DRIVE  
 BECKWORTH COURT  
 SCALE: HORIZ 1"=40' VERT 1"=4'

ACCOUNT No. 76-105  
 DRAWING NUMBER  
**S-1050**  
 SHEET 3 OF 4  
 76-105 B





**Bench Mark:**  
 Brass Disc set in concrete stamped 60-25-88  
 on west side of Tyler Street 250' North of Indiana  
 Avenue and 1/2 Northeast of Bridge No. 56-419,  
 Elev. 756.665



CURVE DATA				
NO.	Δ	R	L	T
(A)	25° 58' 47"	771.00'	349.60'	177.86'
(B)	04° 56' 58"	771.00'	62.60'	33.32'
(C)	24° 30' 00"	295.00'	126.14'	64.05'
(D)	16° 11' 30"	195.00'	65.11'	27.74'

**Note:**  
 See sheet #1 for General & Construction Notes  
 \*AS BUILT 3-77 KPT

Approved: *[Signature]*  
 Chief Utilities Engr. - Water  
 Date: 8/17/76

ALBERT A. WEBB ASSOCIATES  
 CIVIL ENGINEERS  
 RIVERSIDE, CALIFORNIA  
 APPROVED BY: *[Signature]* DATE 7/23/76  
 R.E. No. 2876

MARK	REVISIONS	APPR.	DATE

CITY OF RIVERSIDE, CALIFORNIA  
 PUBLIC WORKS DEPARTMENT  
 APPROVED BY: *[Signature]* DATE 10/16/76  
 PRINCIPAL ENGINEER  
 PARK DEPARTMENT  
 TRAFFIC DIVISION  
 CHIEF PUB. WKS. ENGR.

SEWER PLAN & PROFILE  
 TRACT NO 6070  
 KILKENNY DRIVE  
 SCALE: HORIZ. 1"=40', VERT. 1"=4'

ACCOUNT No. 76-105  
 DRAWING NUMBER  
**S-1050**  
 SHEET 4 OF 4  
 76-105B