

GENERAL NOTES

1. Construction shall be in accordance with the Standard Specifications for Public Works Construction, 1976 Edition and the City of Riverside Standard Drawings.
2. It shall be the responsibility of the Contractor to clear the Right of Way in accordance with the provisions of law as it affects each utility including irrigation lines and appurtenances and at no cost to the City.
3. Pipe shall be bedded per Case 1, Standard Drawing No. 452, unless otherwise specified on the plans.
4. Location of wyes and laterals to be determined in the field at the direction of the owner.
5. All stubs and laterals to be constructed in accordance with Standard Drawing No. 562. Stubs shall be plugged and capped.
6. Manhole frames and covers to be set as noted in profiles by sewer Contractor after final paving of streets.
7. Laterals are to be 4" U.C.P. and extended to property line.
8. Prior to construction of sewer Contractor is to expose the existing sewer and contact the Engineer for verification of existing location and elevation.
9. Plugs shall be installed and will remain in place where the new sewer connects with the existing sewer until such time as the new sewer is accepted by the City.

NOTICE TO CONTRACTOR

- The existence and location of underground utility pipes or structures shown on these plans are obtained by a search of the available records. To the best of our knowledge there are no existing utilities except as shown on these plans.
- The Contractor is required to take due precautionary measures to protect the utility lines shown and any other lines not of record or not shown on these plans.

BENCH MARK: Elev. 845.599

24 x 24 City of Riverside Eng. Tap R.W.C. Canal headwall W. side Monroe. City B.M. F-5-H

*AS BUILT 3:71 KFT

APPROVED BY: *Walter Styles*
 CHIEF UTILITIES ENGINEER, WATER
 DATE: 7-21-76

ALBERT A. WEBB ASSOCIATES
 CIVIL ENGINEERS
 RIVERSIDE, CALIFORNIA
 APPROVED BY: *Albert A. Webb* DATE: 7/15/76
 R.E. No. 9976

MARK	REVISIONS	APPR.	DATE

CITY OF RIVERSIDE, CALIFORNIA
 PUBLIC WORKS DEPARTMENT
 APPROVED BY: *William S. Henderson*
 DIRECTOR OF PUBLIC WORKS
 DATE: 11/3/76

SEWER PLAN & PROFILE
 INDEX MAP
 TRACT 6305
 SCALE: 1" = 50'

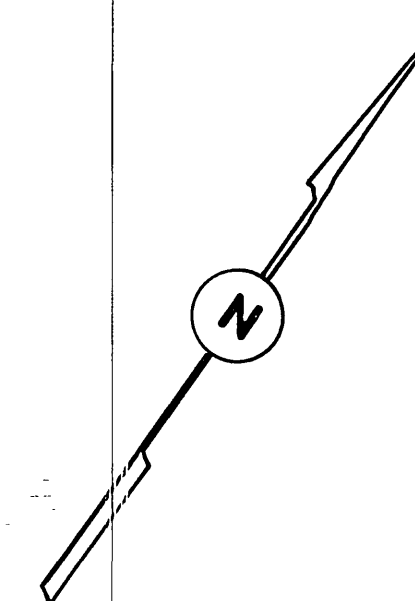
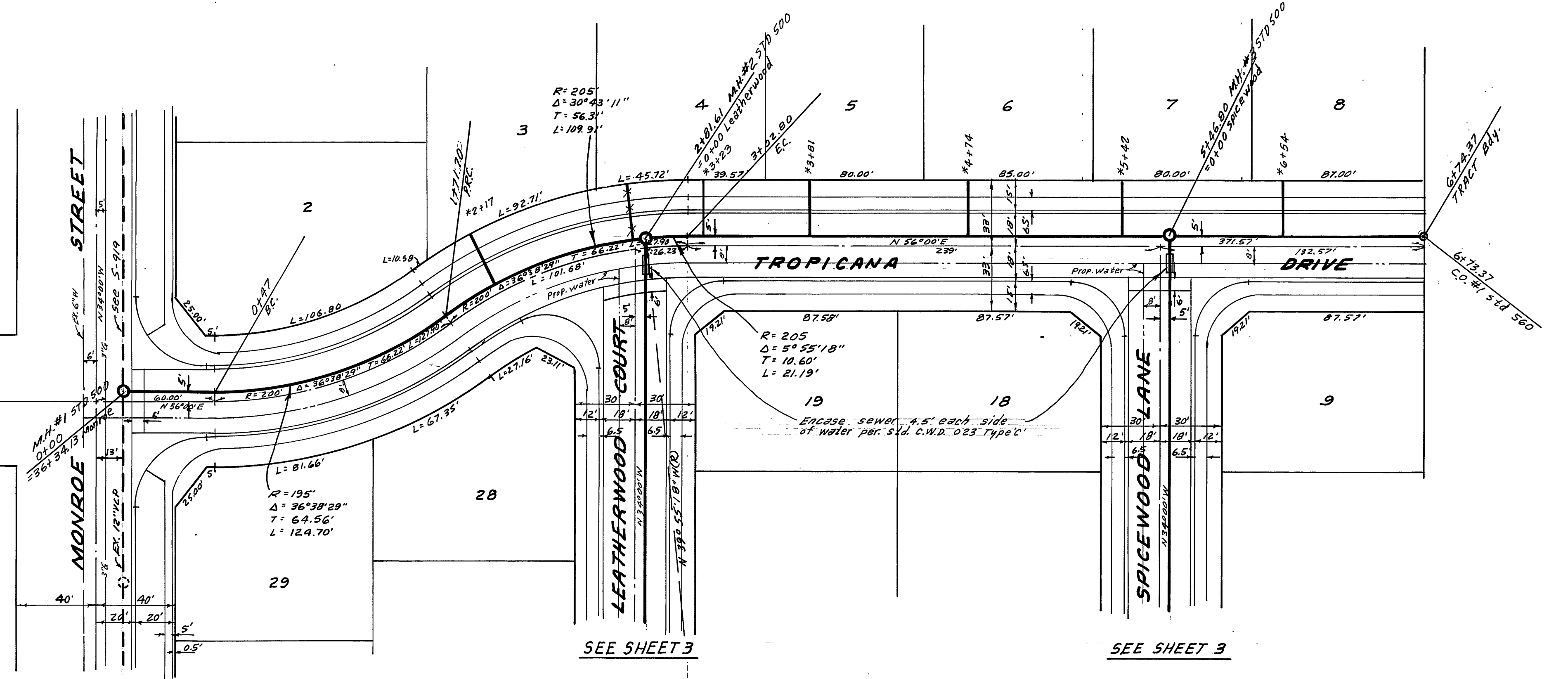
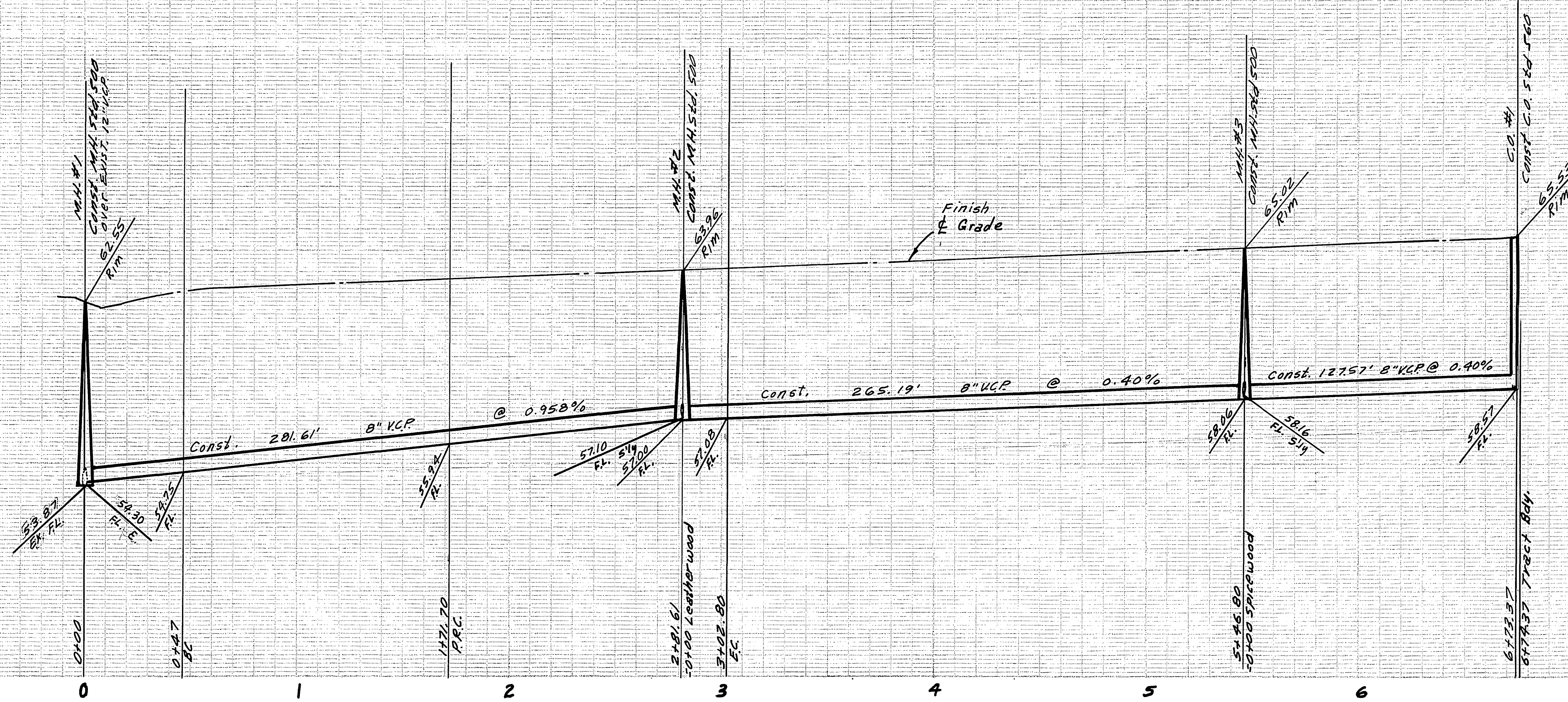
ACCOUNT No.
 DRAWING NUMBER
 S-1051
 SHEET 1 OF 3
 74-264-B

865

855

865

855



BENCH MARK: Elev. 845.599
 PL. 122 City of Riverside Eng. Top R.W.C. Canal
 headwall W. side Monroe. City B.M. F-5-H

*AS BUILT 3-77 KBT

APPROVED BY: *Halley Hahn*
 CHIEF UTILITIES ENGINEER, WATER
 DATE: 7-21-76

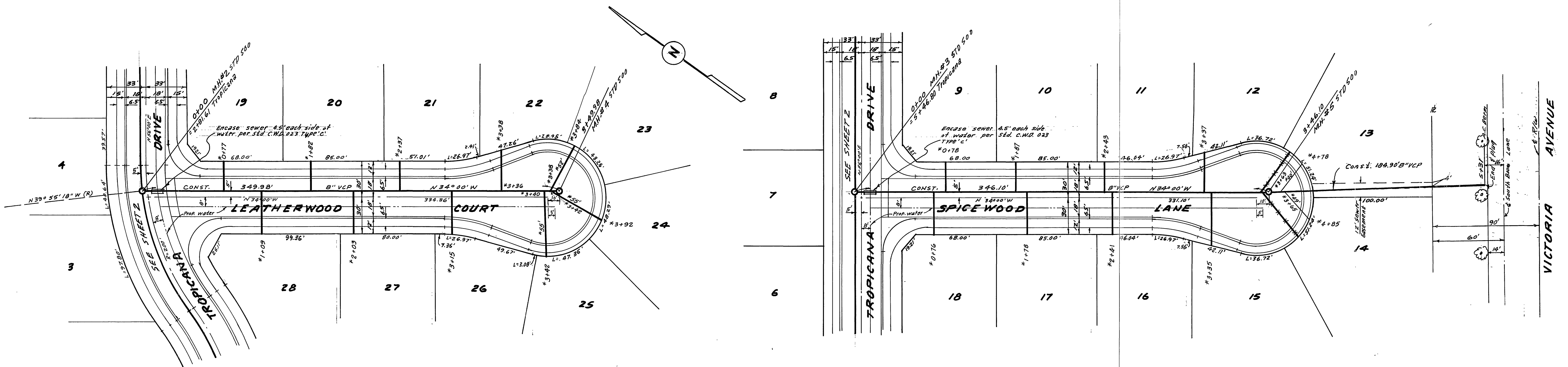
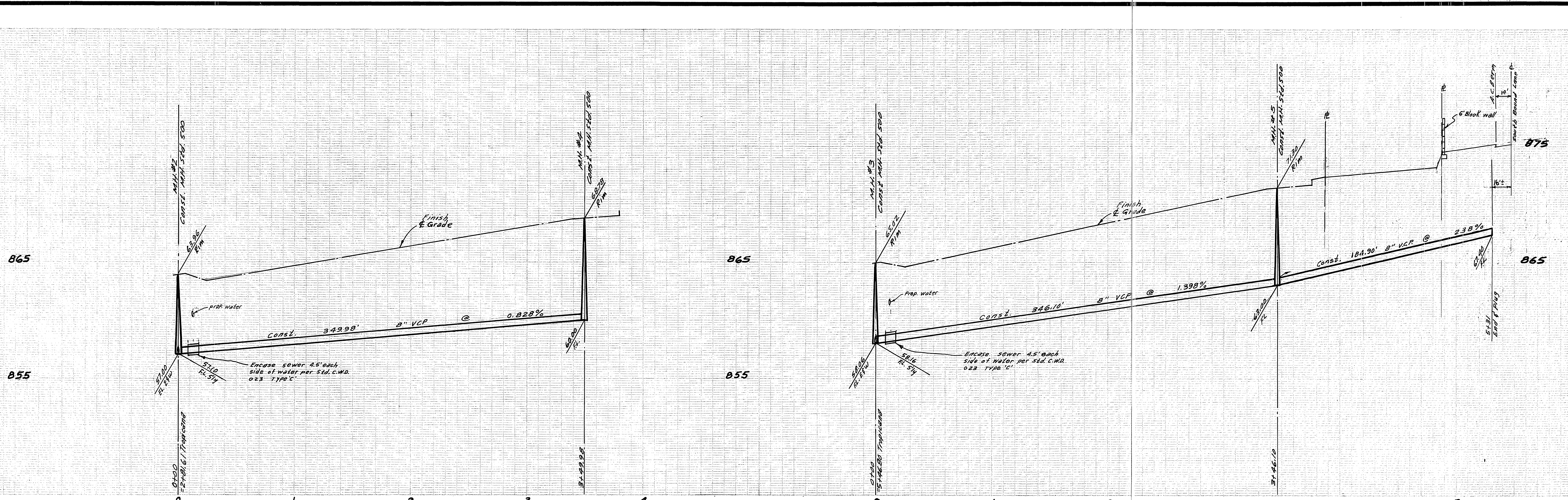
ALBERT A. WEBB ASSOCIATES
 CIVIL ENGINEERS
 RIVERSIDE, CALIFORNIA
 APPROVED BY: *Don W. Webb* DATE: 7/15/76
 R.E. No. 9976
 W.O. 74-264 FOR: F.B. 1039

MARK	REVISIONS	APPR. DATE

CITY OF RIVERSIDE, CALIFORNIA
 PUBLIC WORKS DEPARTMENT
 APPROVED BY: *William S. ...*
 DIRECTOR OF PUBLIC WORKS
 DATE: 11/3/76

SEWER PLAN & PROFILE
 TROPICANA DRIVE
 TRACT 6305
 SCALE: 1" = 40' Horiz., 1" = 4' Vert.

ACCOUNT No.
 DRAWING NUMBER
 S-1051
 SHEET 2 OF 3
 74-264-B



BENCH MARK: ELEV. 845.599
 at 1209 City of Riverside Eng. Twp R.W.C. Canal
 headwall W. side Monroe. City S.M. F-5-H

*AS BUILT 3-77 KBT

APPROVED BY: *Walter J. Joffe*
 CHIEF UTILITIES ENGINEER, WATER
 DATE: 7-21-76

ALBERT A. WEBB ASSOCIATES
 CIVIL ENGINEERS
 RIVERSIDE, CALIFORNIA
 APPROVED BY: *Albert A. Webb* DATE: 7/15/76
 R.E. No. 2876

MARK	REVISIONS	APPR.	DATE

CITY OF RIVERSIDE, CALIFORNIA
 PUBLIC WORKS DEPARTMENT
 APPROVED BY: *William S. Henderson*
 DIRECTOR OF PUBLIC WORKS
 DATE: 11-3-76

SEWER PLAN & PROFILE
SPICEWOOD LANE
LEATHERWOOD COURT
TRACT 6305

ACCOUNT No.
 DRAWING NUMBER
S-1051
 SHEET 3 OF 3
 74-264-B

SCALE: 1" = 40' Horiz., 1" = 4' Vert.

W.O. 74-264 FOR: F.B. 1038 DESIGNED BY: BEL DRAWN BY: BEL CHECKED BY: BDM