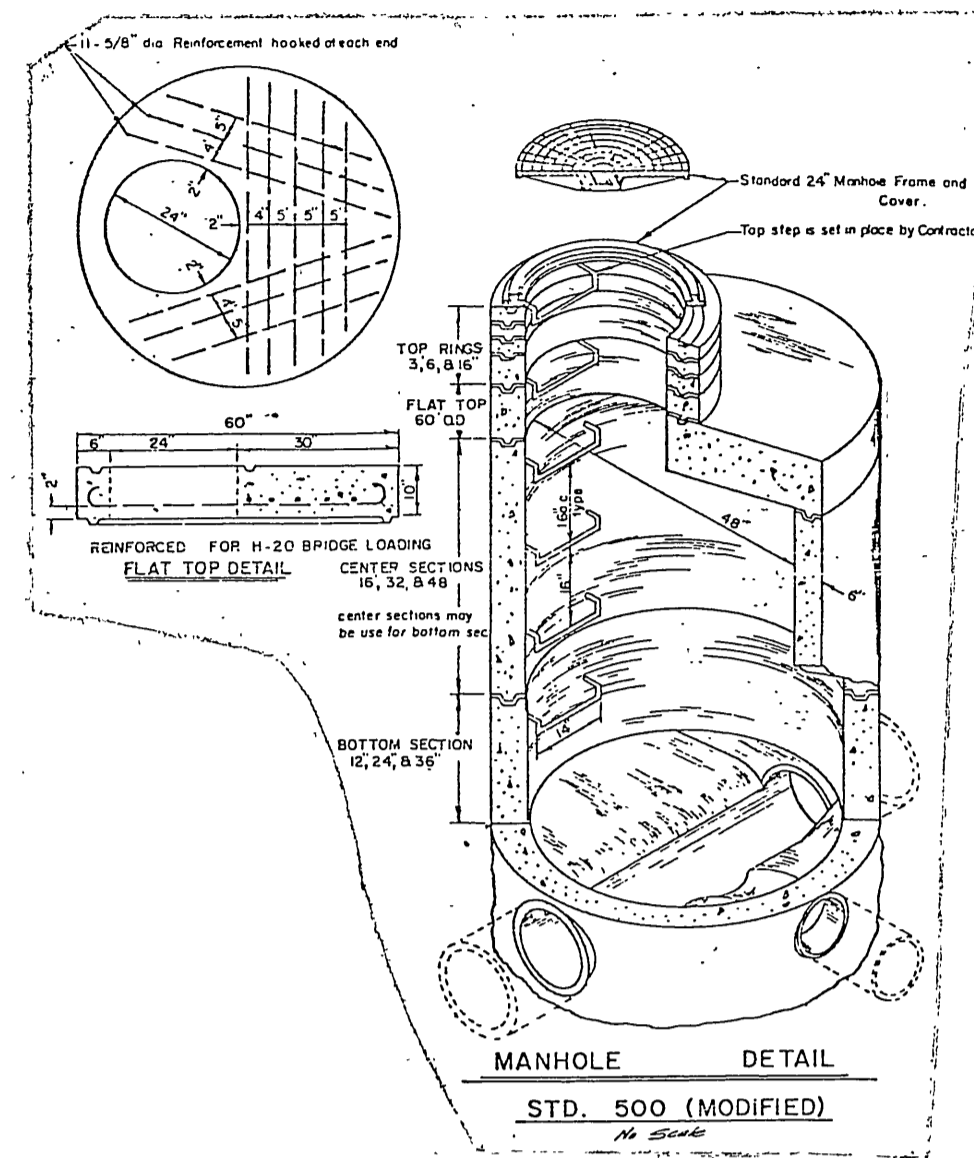


LOCATION MAP
No Scale



GENERAL NOTES

- 1 Construction shall be in accordance with standard specifications for Public Works construction, 1976 Edition, and City of Riverside Standard Drawings.
- 2 It shall be the responsibility of the Contractor to clear the right of way in accordance with the provisions of law as it affects each utility including irrigation lines and appurtenances and of no cost to the City.
- 3 Pipe shall be bedded per Case 1, Standard Drawing No. 452, unless otherwise specified on plans.
- 4 Location of Mises and Laterals to be determined of the direction of the owner.
- 5 All stubs and Laterals to be constructed in accordance with Standard Drawing No. 562, stubs to be plugged and capped, unless otherwise specified on plans.
- 6 The Sewer Contractor shall adjust Manholes to final grade after paving is completed.
- 7 Laterals are to be 4" and extended to property line.
- 8 Prior to construction of Sewer, Contractor is to expose existing sewer and contact the Engineer for verification of existing location and elevation.
- 9 Encase Sewer 4.5' each side of proposed water main crossing per Public Utilities Drawing C.M.D. 223, Type B.
- 10 A plug shall be installed and will remain in place where the new sewer connects with the existing sewer until the new sewer is accepted by the City.

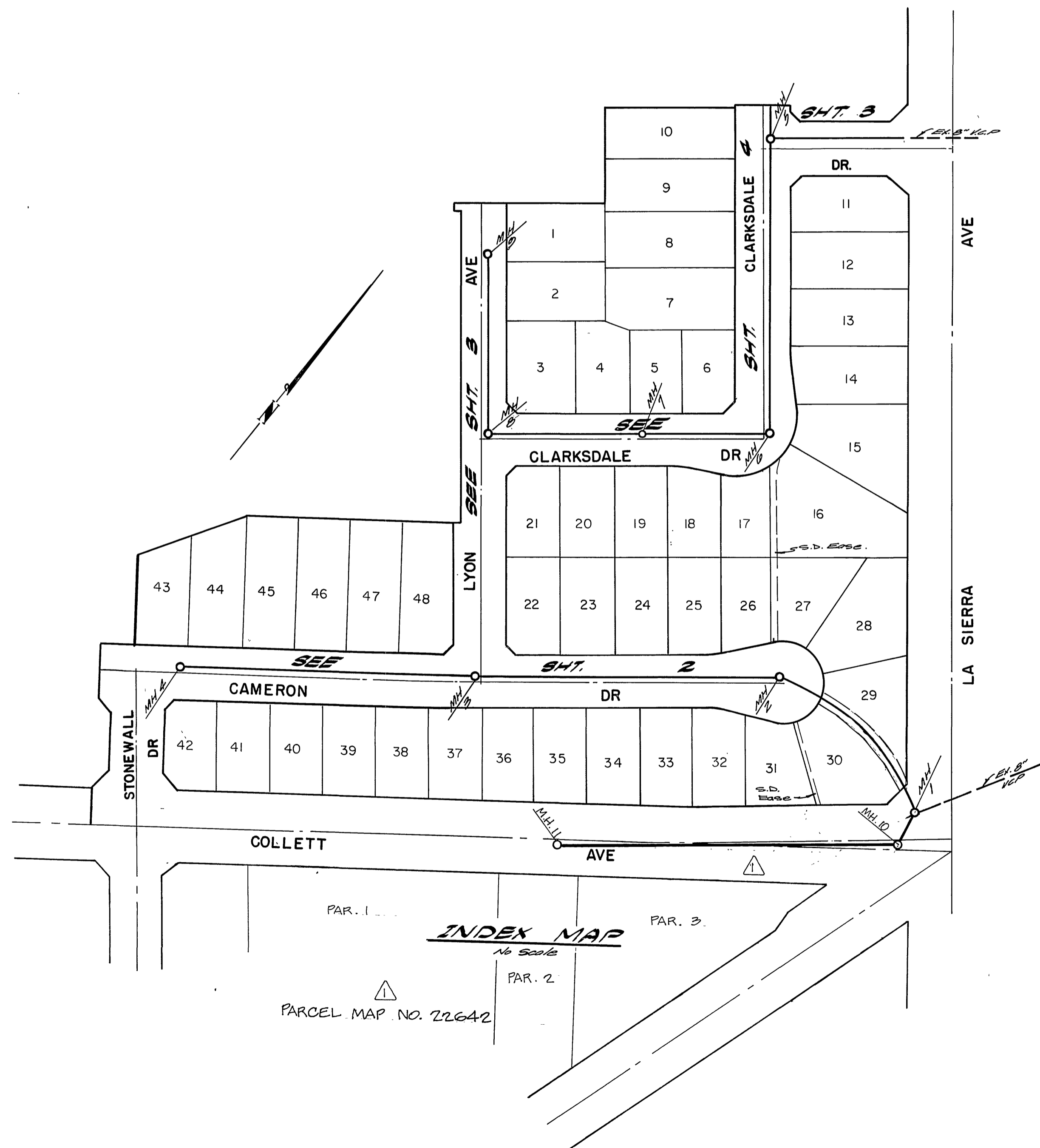
NOTICE TO CONTRACTOR

The existence and location of underground utility pipes or structures shown on these plans are obtained by a search of the available records. To the best of our knowledge, there are no existing utilities except as shown on these plans.

The contractor is required to take due precautionary measures to protect the utility lines shown and any other lines not of record or not shown on these plans.

BENCH MARK

R.E. Spike in Power Pole No. 24580-J
at Southeast corner of La Sierra
Avenue and Collett Avenue. C.R.F.B.
978/15 Elevation: 724.25



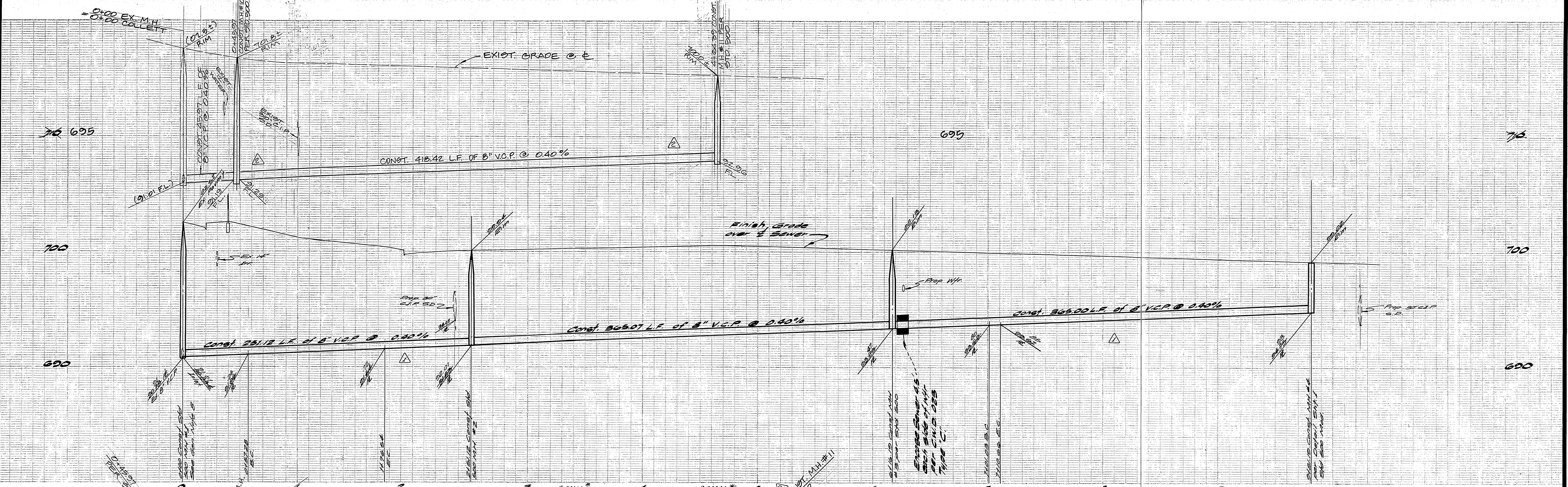
ALBERT A. WEBB ASSOCIATES
CIVIL ENGINEERS
RIVERSIDE, CALIFORNIA
APPROVED BY: *L.A. Mansueti* DATE: 5-27-76
R.E. No. 10056
W.O. 26-100 FOR: *Peace Suffer Homes* F.B. 1032

DESIGNED BY: *ELT* DRAWN BY: *ELT* CHECKED BY: *EDM*

CITY OF RIVERSIDE, CALIFORNIA
PUBLIC WORKS DEPARTMENT
APPROVED BY: *Walter G. Brown* DATE: 9-28-76
PRINCIPAL ENGINEER
PARK DEPARTMENT
TRAFFIC DIVISION
CHIEF PUB. WKS. ENGR.
DATE: 10-26-76

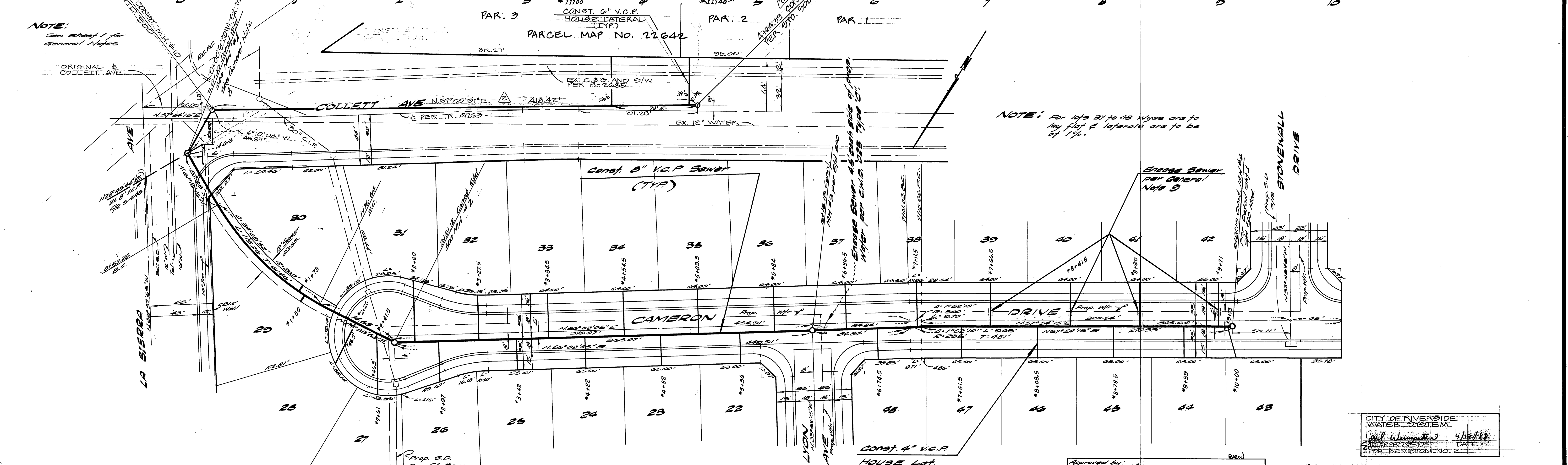
*AS BUILT 3-77 KPT
SEWER PLANS & PROFILE
TRACT NO 6763-1
AND PARCEL MAP NO. 22642
INDEX
SCALE: None

INDEXED 2A
ACCOUNT No.
DRAWING NUMBER
S-1052
SHEET 1 OF 4
76-100-B
87-95 B



NOTE:
See Sheet 1 for
General Notes

NOTE: For lots 37 to 48 there are to
be flag & laterals are to be
of 1/4\"/>



BENCH MARK
R.R. spike in power pole
No. 2488-1 at E.E. corner
La Sierra & Collett Aves.
D.T.B. Elev. 704.20

ALBERT A. WEBB ASSOCIATES
CIVIL ENGINEERS
RIVERSIDE, CALIFORNIA

APPROVED BY: *[Signature]* DATE: 5-27-76
R.E. No. 10252

W.O. 76-100 FOR: Pace Saffner Homes F.B. 1032

NO.	REVISIONS	DATE
1	ADDED SEWER COLLECTIVE LINE	5/27/76
2	REVISED R.L. ELEV. TO TO MATCH	5/27/76

Approved by: *[Signature]* 9-28-76
Chief Engineer, Water Dept.
CITY OF RIVERSIDE, CALIFORNIA
PUBLIC WORKS DEPARTMENT

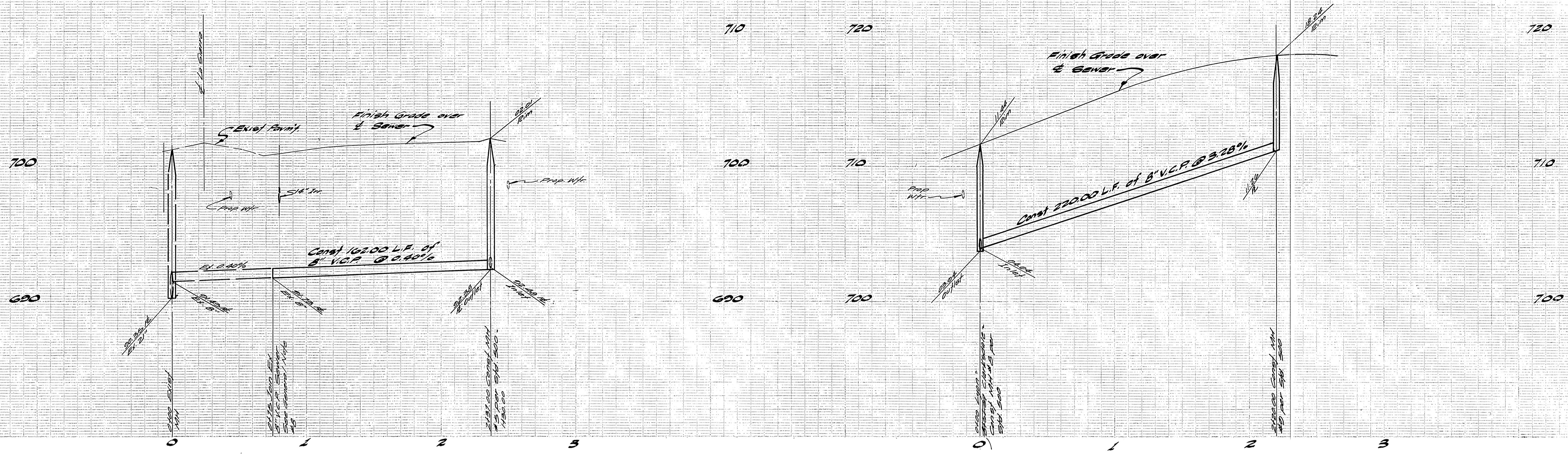
APPROVED BY: *[Signature]*
DIRECTOR OF PUBLIC WORKS
DATE: 10-26-76

* AS BUILT 1-24-91 LH
* AS BUILT 3-77 KPT

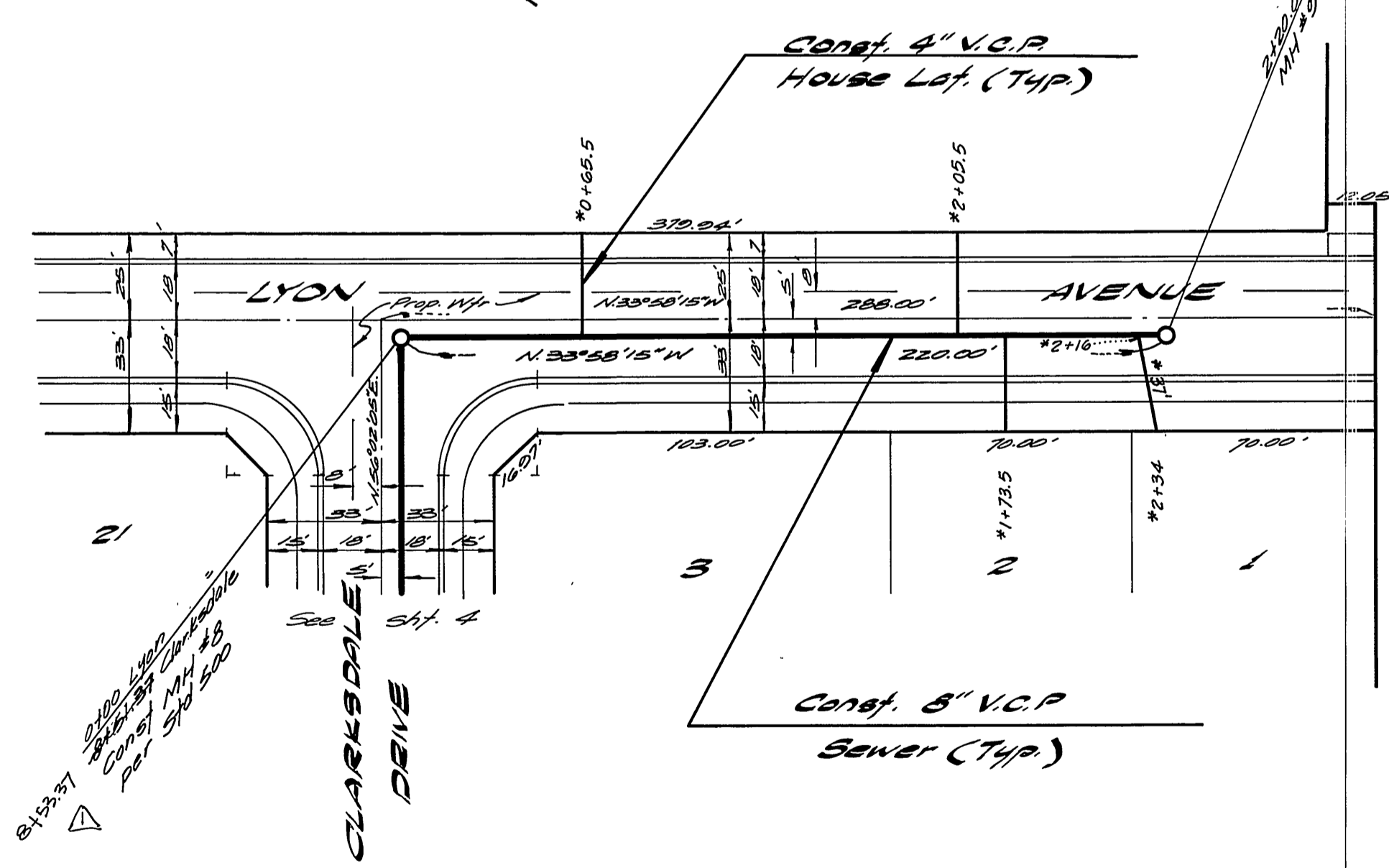
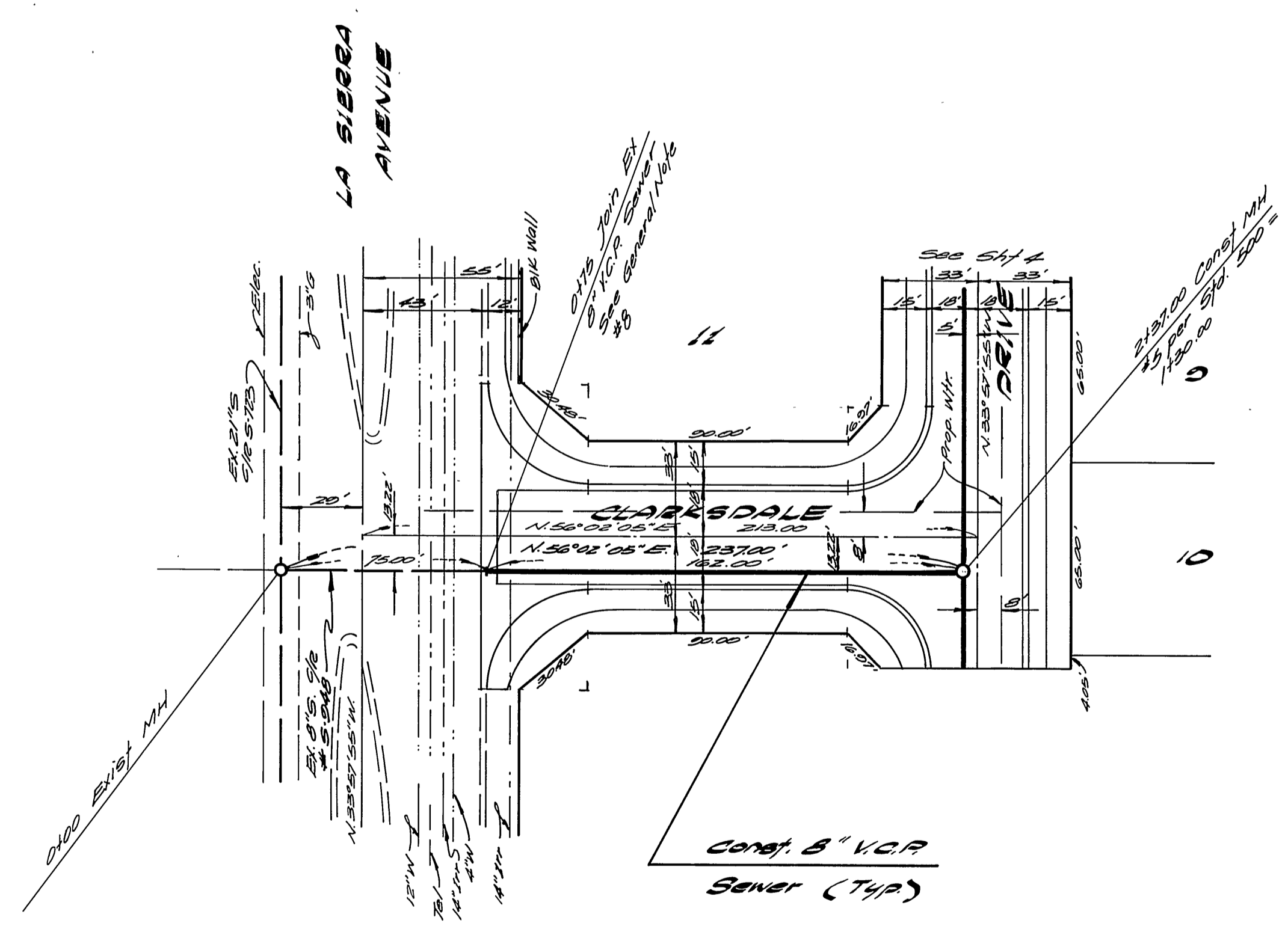
CITY OF RIVERSIDE
WATER SYSTEM
Chief Engineer 9/18/88
DATE: 9/18/88
REVISION NO. 2

ACCOUNT NO.
DRAWING NUMBER
S-1052
SHEET 2 OF 4
76-100-13
87-95 B

SEWER PLANS & PROFILE
TRACT 0763-1 AND
PARCEL MAP NO. 22642
CAMERON DRIVE
AND COLLETT AVENUE
SCALE: Horiz: 1"=40' Vert: 1"=4'



NOTE:
See Sh. 1 for
General Notes



BENCH MARK
E.E. spike in power pole No. 24580-J at SE corner La Sierra & Clarkdale R.E. No. 10052 Elev.: 704.25

ALBERT A. WEBB ASSOCIATES
CIVIL ENGINEERS
RIVERSIDE, CALIFORNIA
APPROVED BY: *[Signature]* DATE: 5-27-76
R.E. No. 10052

MARK	REVISIONS	APPR.	DATE

Approved by:
[Signature] 9-28-76
Chief of Public Works, Engineer, Water Dept.
CITY OF RIVERSIDE, CALIFORNIA
PUBLIC WORKS DEPARTMENT
APPROVED BY: *[Signature]* DATE: 10-26-76
PRINCIPAL ENGINEER
TRAFFIC DIVISION
CHIEF PUB. WKS. ENGR.

*AS BUILT 3-77 KBT
SEWER PLANS & PROFILE
TRACT NO 6763-S
LYON AVENUE
CLARKSDALE DRIVE
ACCOUNT No. S-1052
DRAWING NUMBER
SHEET 3 OF 4
SCALE: Horiz: 1"=40' Vert: 1"=4'

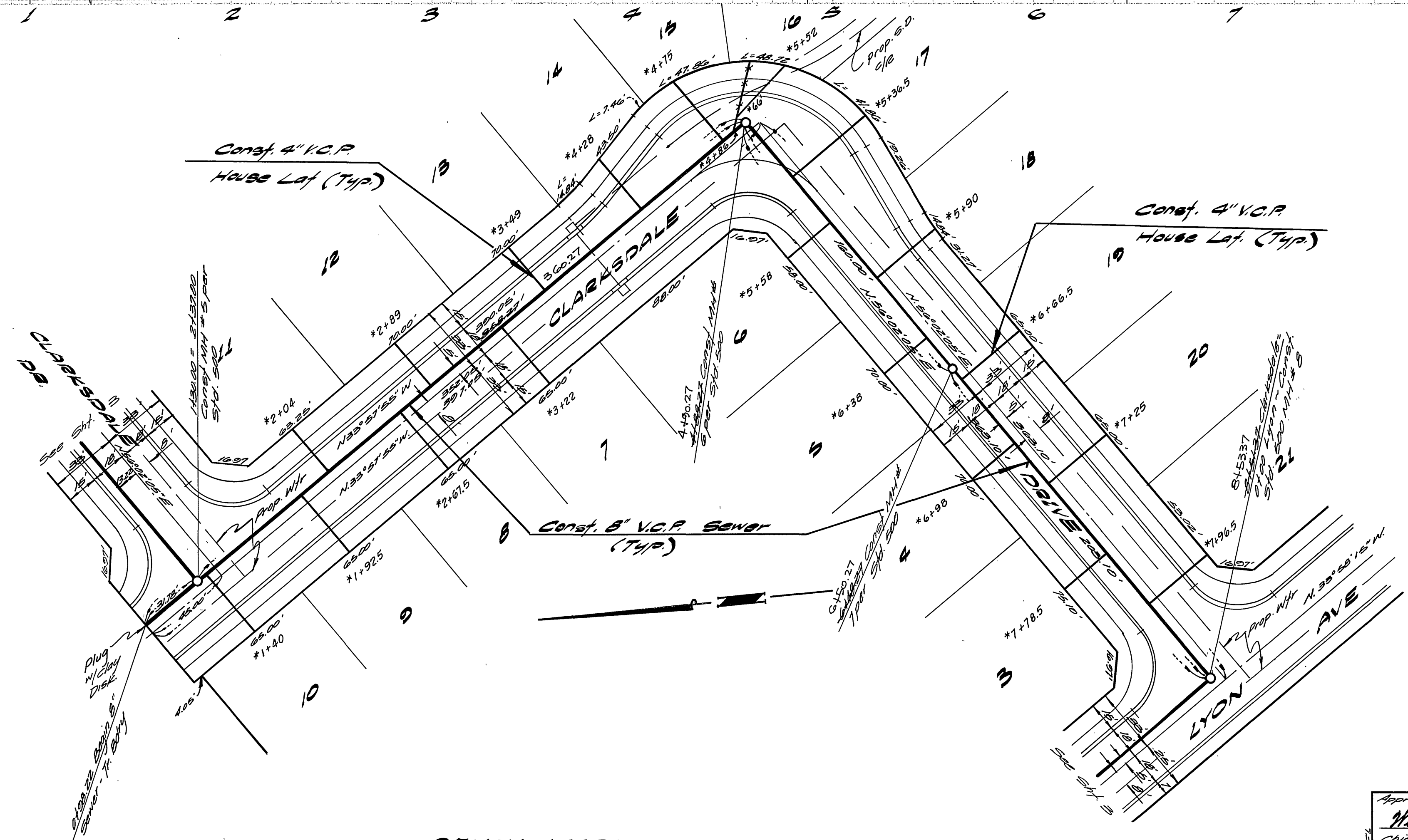
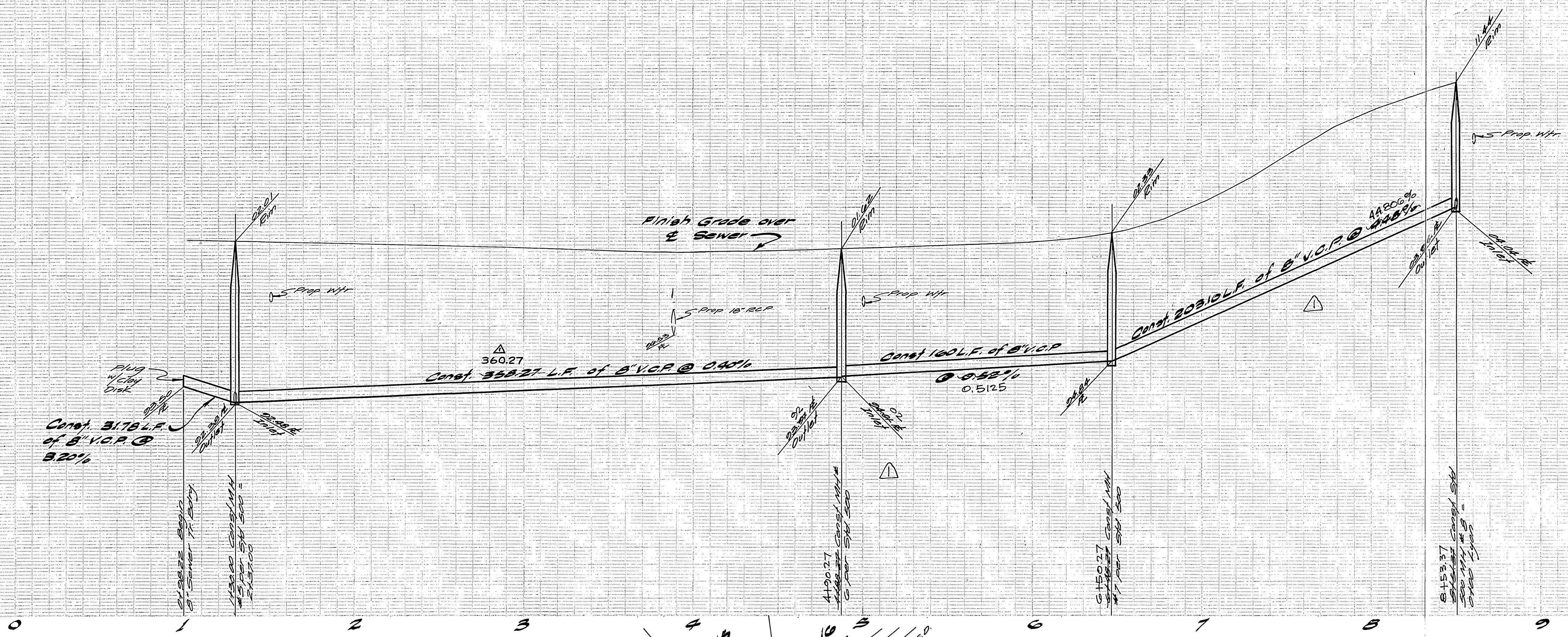
W.O. 76-100 FOR: Peco Saffler Homes F.B. 1032

DESIGNED BY: *[Signature]* DRAWN BY: *[Signature]* CHECKED BY: *[Signature]*

DATE: 10-26-76

710
700
600

710
700
600



BENCH MARK
 R.R. spike in power pole No. 24580 J of S.E. corner La Sierra & Collett, R.C.E.B 978/5. Elev. 704.25

ALBERT A. WEBB ASSOCIATES
 CIVIL ENGINEERS
 RIVERSIDE, CALIFORNIA
 APPROVED BY: *[Signature]* DATE: 5-27-76
 R.E. No. 10052

MARK	REVISIONS	APP. DATE
△	SEE STA. 3 GRADES TO CORRECT 60M DISTANCE ERROR. SEE 212.	10/26/76
△	DESIGNED BY: <i>[Signature]</i> DRAWN BY: <i>[Signature]</i> CHECKED BY: <i>[Signature]</i>	

Approved by: *[Signature]* 9-28-76
 Chief Engineer, Water Dept.
CITY OF RIVERSIDE, CALIFORNIA
 PUBLIC WORKS DEPARTMENT
 APPROVED BY: *[Signature]* DATE: 10-26-76
 CHIEF PUB. WKS. ENGR.

*AS BUILT 3-77 KPT
SEWER PLANS & PROFILE
 TRACT NO. 6763-1
 CLARKSDALE DRIVE
 SCALE: Horiz: 1"=40' Vert: 1"=4'

ACCOUNT No.
 DRAWING NUMBER
S-1052
 SHEET 4 OF 4
 76-100-B