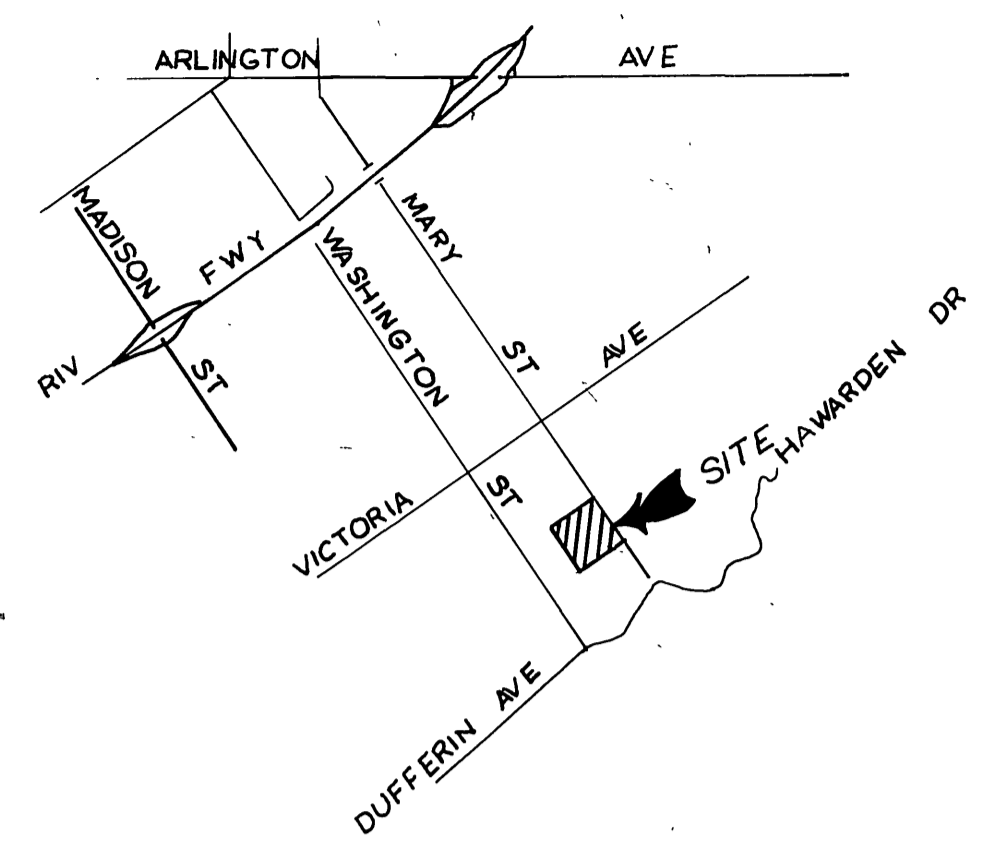


INDEX MAP
SCALE 1" = 100'



LOCATION MAP
NO SCALE

GENERAL NOTES

1. Construction shall be in accordance with the Standard Specifications for Public Works Construction 1976 Edition and the City of Riverside Standard Drawings.
2. It shall be the responsibility of the Contractor to clear the Right of Way in accordance with the provisions of law as it affects each utility including irrigation lines and appurtenances and at no cost to the City.
3. Pipe shall be bedded per Case I, Standard Drawing No. 452, unless otherwise specified on the plans.
4. Location of wyes and laterals to be determined in the field at the direction of the owner.
5. All stubs and laterals to be constructed in accordance with Standard Drawing No. 562. Stubs shall be plugged and capped.
6. Manhole frames and covers to be set as noted in profiles by Sewer Contractor after final paving of streets.
7. Laterals are to be 4" V.C.P. and extended to property line.
8. Prior to construction of sewer, Contractor is to expose the existing sewer and contact the Engineer for verification of existing location and elevation.
9. Plugs shall be installed and will remain in place where the new sewer connects with the existing sewer until such time as the new sewer is accepted by the City.
10. Encase Sewer 4.5' each side of water line per std CWD 023 Type C.

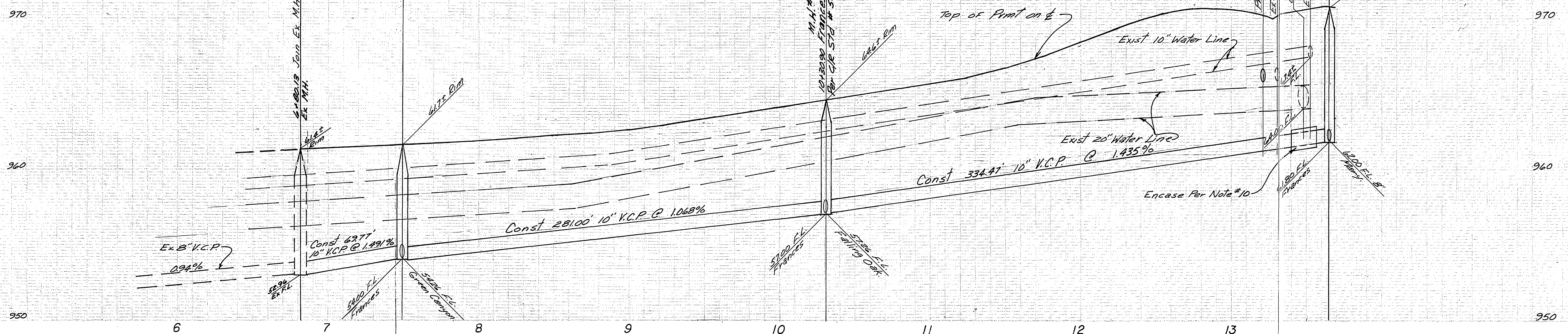
NOTICE TO CONTRACTOR

The existence and location of underground utility pipes or structures shown on these plans are obtained by a search of the available records to the best of our knowledge. There are no existing utilities except as shown on these plans.

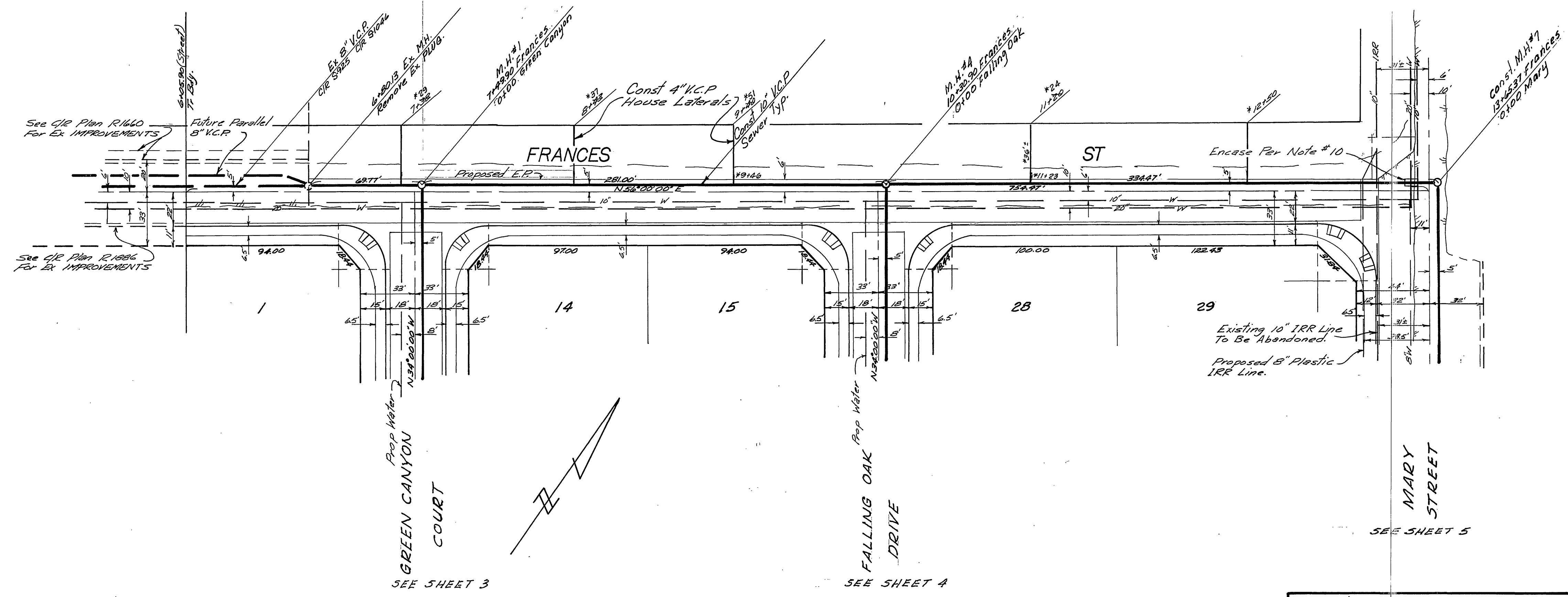
The Contractor is required to take discretionary measures to protect the utility lines shown and any other lines not of record or not shown on these plans.

BENCH MARK G6-B ELEV = 944.502
BRASS DISK DOWN 8" IN CAPPED WELL
AT INTERSECTION OF MARY STREET & VICTORIA AVENUE.

ALBERT A. WEBB ASSOCIATES CIVIL ENGINEERS RIVERSIDE, CALIFORNIA APPROVED BY: <i>Paul H. Webb</i> DATE 7/15/76 R.E. No. 9876		Approved By: <i>Walter J. ...</i> 8-31-76 Chief Civil & Water Engineer - Water DATE		*AS BUILT 3.77 MFT ACCOUNT No. INDEXED H.D. DRAWING NUMBER 5-1054
CITY OF RIVERSIDE, CALIFORNIA PUBLIC WORKS DEPARTMENT		SEWER PLAN & PROFILE TRACT NO 5913 INDEX SHEET		SHEET 1 OF 5 74-44-B
APPROVED BY: <i>William D. Henderson</i> DATE 11/8/76 DIRECTOR OF PUBLIC WORKS		REVISIONS APPR. DATE DESIGNED BY REC DRAWN BY LEM CHECKED BY M...		SCALE: AS SHOWN
W.O. 74-44 FOR: Country Wood Estates F.B. 1035		DATE 11/8/76		74-44-B

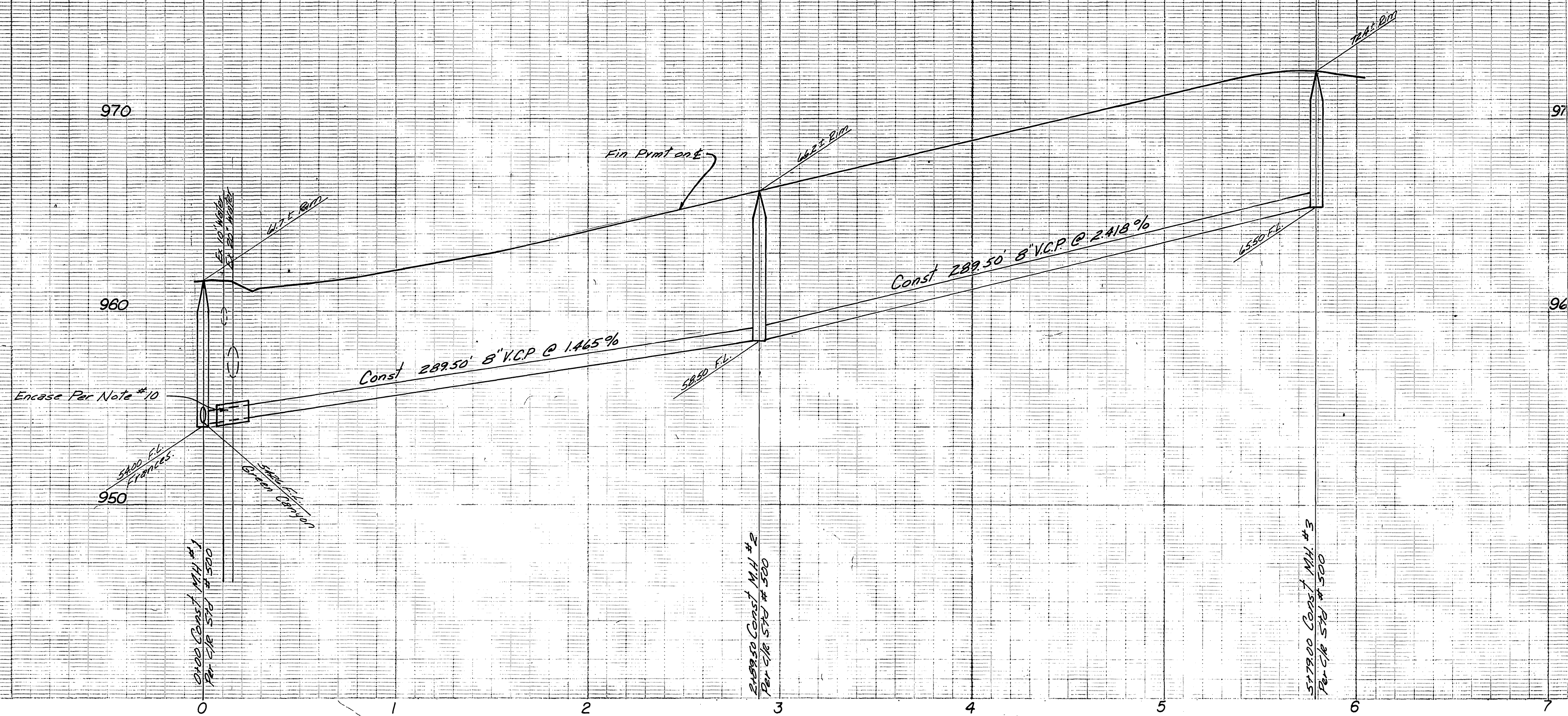


SEE SHEET NO 1 FOR GENERAL NOTES.

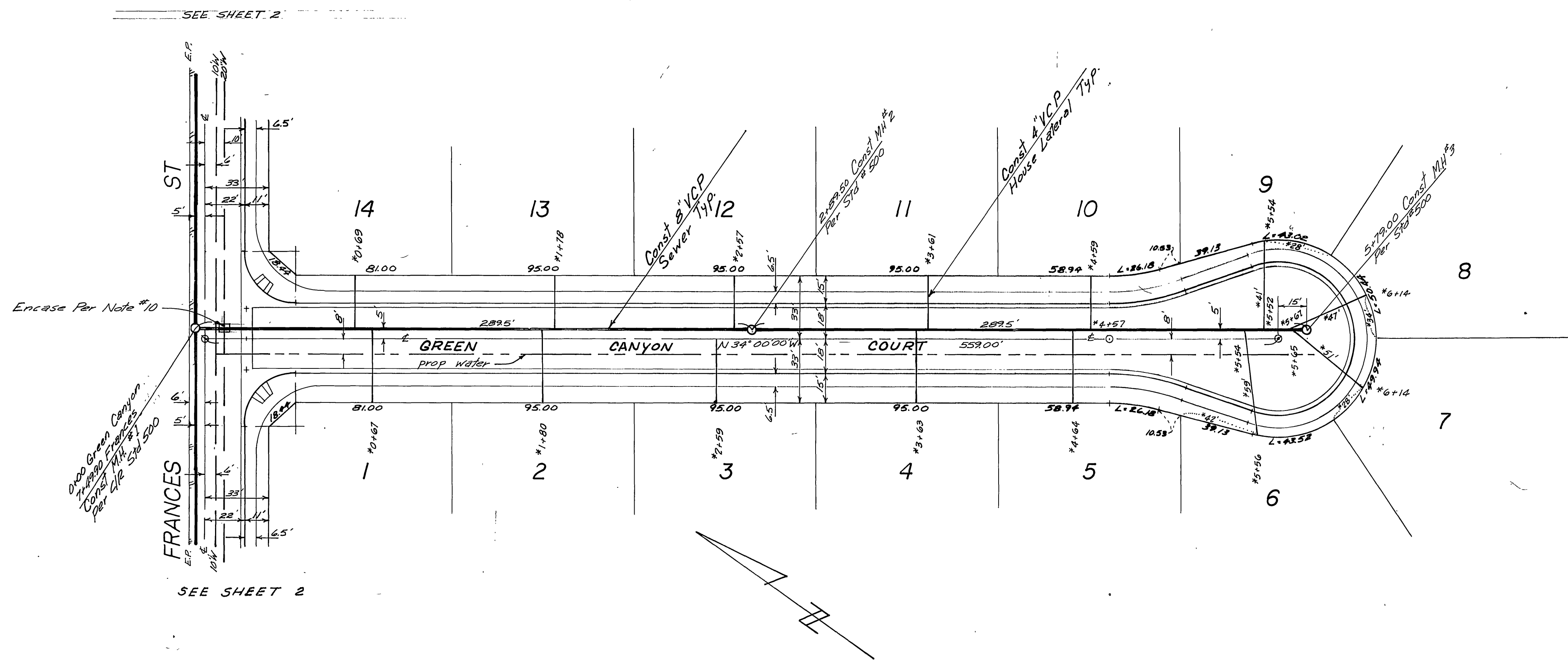


BENCH MARK G6-B ELEV = 944.502
BRASS DISK DOWN 8" IN RAPPED WELL AT INTERSECTION OF MARY STREET & VICTORIA AVENUE.

ALBERT A. WEBB ASSOCIATES CIVIL ENGINEERS RIVERSIDE, CALIFORNIA APPROVED BY: <i>[Signature]</i> DATE: 7/15/76 R.E. No. 9876	MARK REVISIONS APPN. DATE DESIGNED BY: REG. DRAWN BY: L.M. CHECKED BY: J.M.	Approved By: <i>[Signature]</i> DATE: 8-31-76 Chief Utilities Engineer - Water	CITY OF RIVERSIDE, CALIFORNIA PUBLIC WORKS DEPARTMENT APPROVED BY: <i>[Signature]</i> DATE: 7/16/76 PRINCIPAL ENGINEER TRAFFIC DIVISION CHIEF PUB. WKS. ENGR.	SEWER PLAN & PROFILE TRACT 5913 FRANCES ST SCALE: HORIZ 1"=40' VERT 1"=4'	ACCOUNT No. DRAWING NUMBER S-1054
		DATE: 11/8/76			DIRECTOR OF PUBLIC WORKS

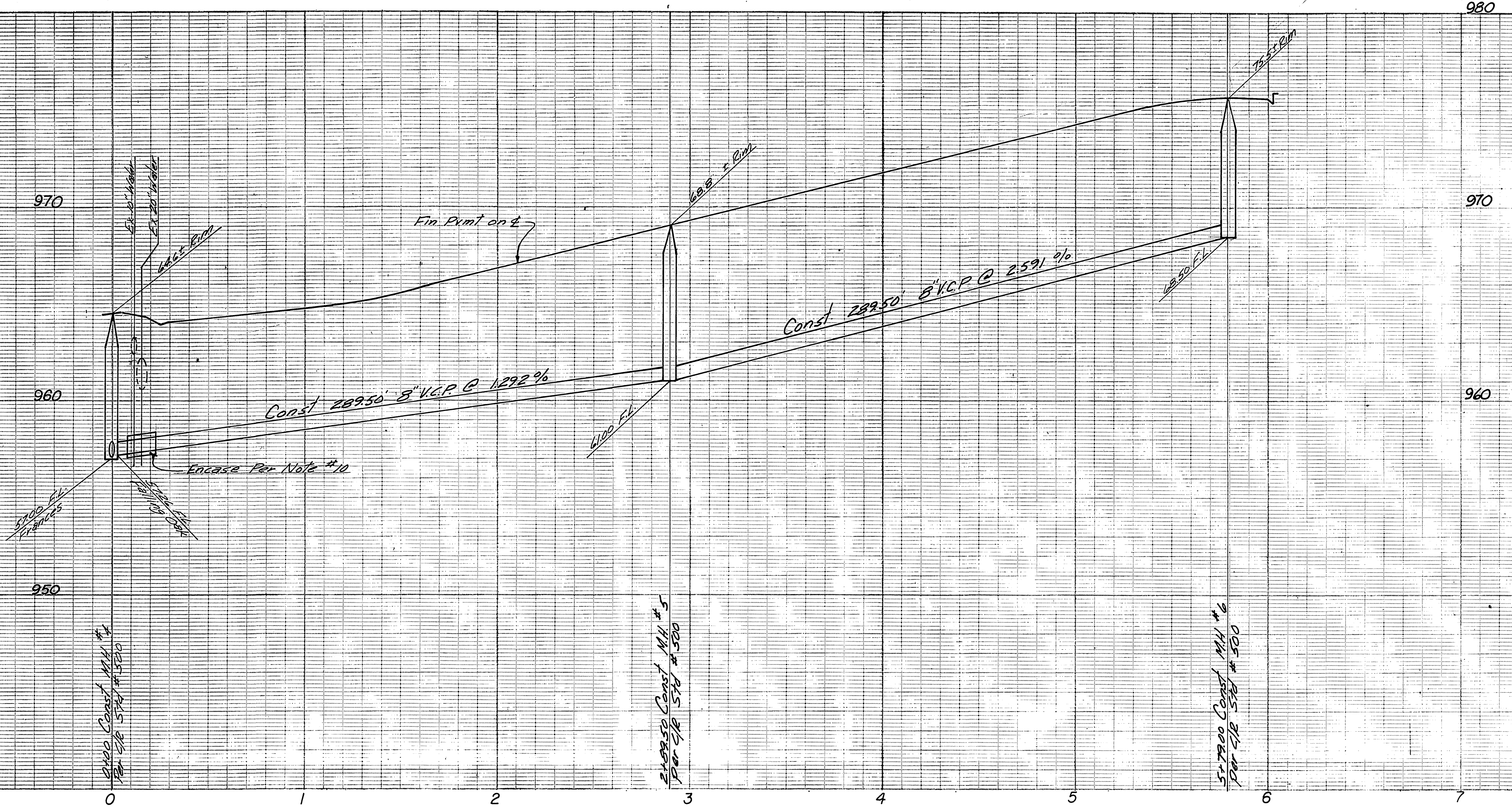


SEE SHEET NO 1 FOR GENERAL NOTES.

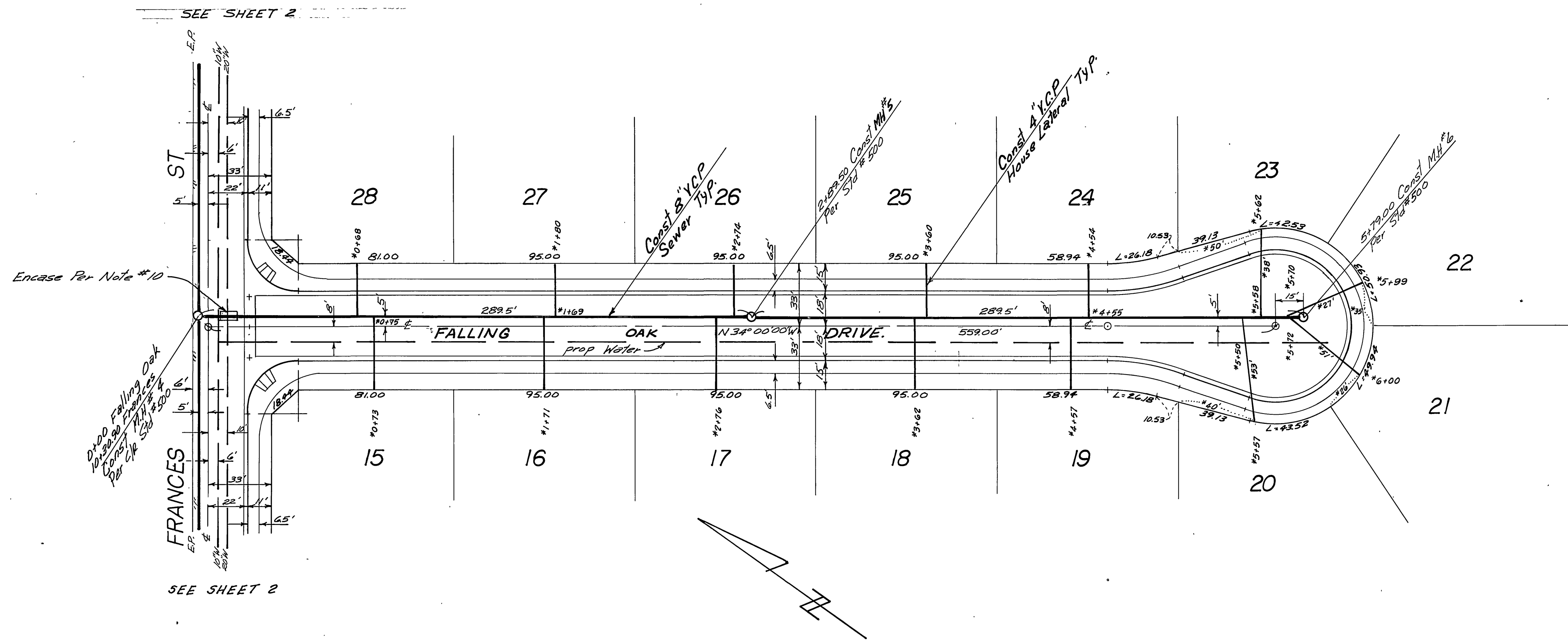


BENCH MARK G6-B ELEV = 944.502
BRASS DISK DOWN 8" IN CAPPED WELL
AT INTERSECTION OF MARY STREET & VICTORIA AVENUE.

Approved by: <i>Walter Taylor</i> Chief Engineer - Water Date: 8-21-76 Approved by: <i>William D. Henderson</i> Director of Public Works Date: 11/8/76		*AS BUILT 3-77 KBT	
ALBERT A. WEBB ASSOCIATES CIVIL ENGINEERS RIVERSIDE, CALIFORNIA APPROVED BY: <i>Paul N. Webb</i> DATE: 7/15/76 R.E. No. 9876		CITY OF RIVERSIDE, CALIFORNIA PUBLIC WORKS DEPARTMENT TRACT NO 5913 GREEN CANYON CT.	
W.O. 72-24 FOR: Country Wood Estates F.B. 1035 DESIGNED BY: REC DRAWN BY: LBD CHECKED BY: LLL		ACCOUNT NO. DRAWING NUMBER S-1054 SHEET 3 OF 5 74-44-B	



SEE SHEET NO 1 FOR GENERAL NOTES.



BENCH MARK G6-B ELEV: 944.502
BRASS DISK DOWN 8" IN CAPPED WELL AT INTERSECTION OF MARY STREET & VICTORIA AVENUE.

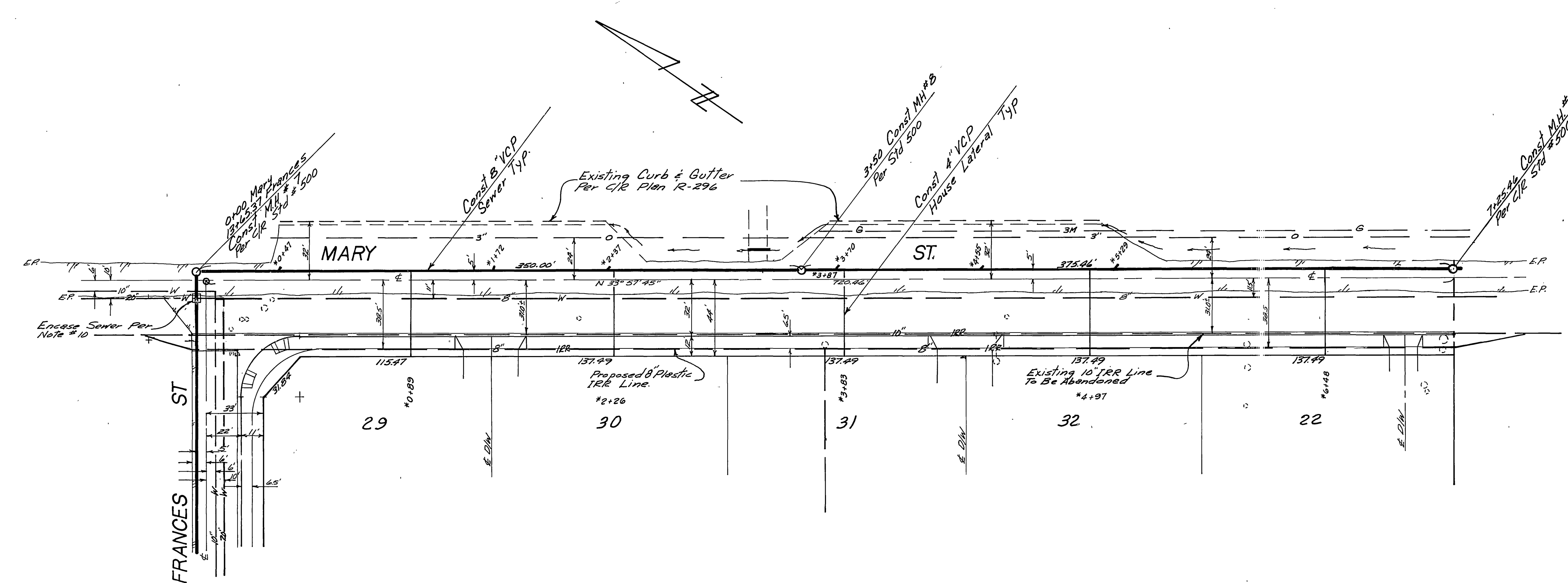
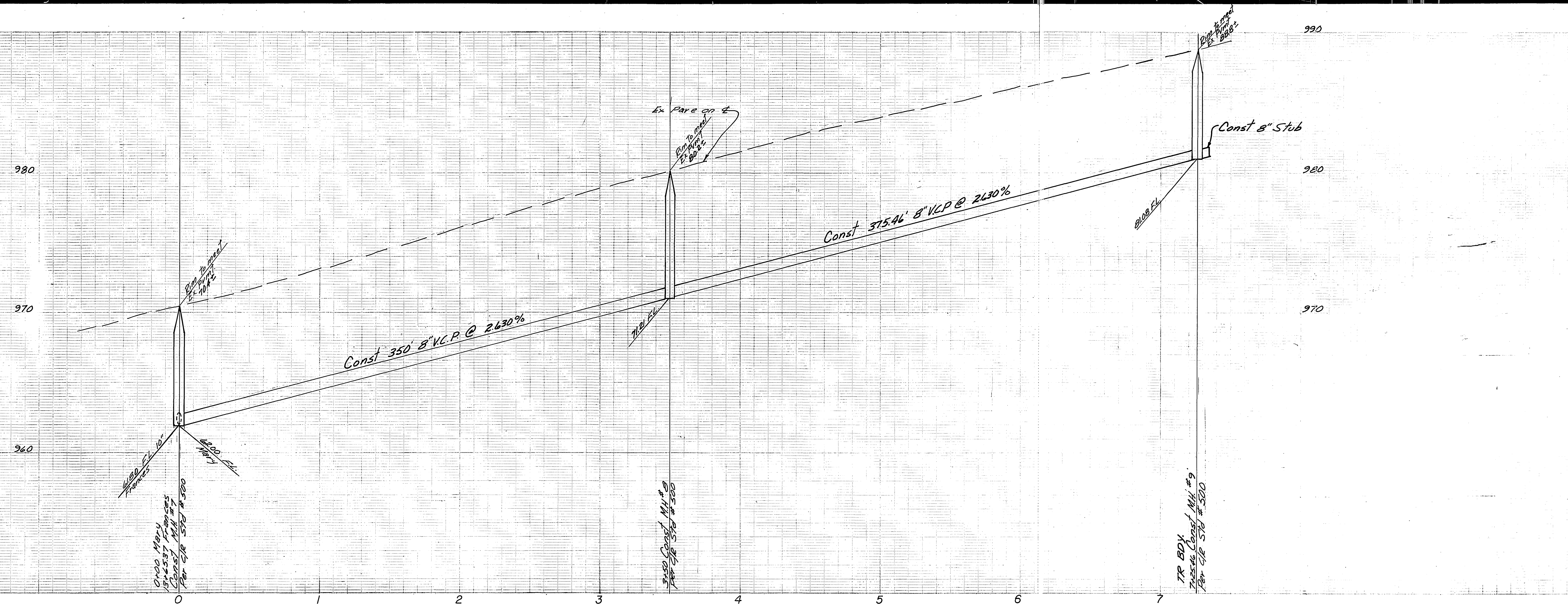
ALBERT A. WEBB ASSOCIATES
CIVIL ENGINEERS
RIVERSIDE, CALIFORNIA
APPROVED BY: *Ernest N. Webb* DATE 7/15/78
R.E. No. 9876
W.O. 74-44 FOR: Country Wood Estates F.B. 1935

MARK	REVISIONS	APPR.	DATE

Approved By: *Wesley Jeffrey* 8-31-76
Chief Utilities Engineer - Water Date
CITY OF RIVERSIDE, CALIFORNIA
PUBLIC WORKS DEPARTMENT
APPROVED BY: *William D. ...*
PRINCIPAL ENGINEER DATE 11/15/76
PARK DEPARTMENT
TRAFFIC DIVISION
CHIEF PUB. WKS. ENGR.
DATE 11/8/76

SEWER PLAN & PROFILE
TRACT NO 5913
FALLING OAK DR.
SCALE: HORIZ 1"=40' VERT 1"=4'

ACCOUNT No.
DRAWING NUMBER
S-1054
SHEET 4 OF 5
74-44-B



BENCH MARK 66-B ELEV = 944.502
 BRASS DISK DOWN 8' IN CAPPED WELL
 AT INTERSECTION OF MARY STREET & VICTORIA AVENUE.

SEE SHEET 2

ALBERT A. WEBB ASSOCIATES
 CIVIL ENGINEERS
 RIVERSIDE, CALIFORNIA
 APPROVED BY *[Signature]* DATE 7/15/76
 R.E. No. 9876

MARK	REVISIONS	APPR.	DATE

Approved By *[Signature]* 8-31-76
 Chief Utilities Engineer - Water
 CITY OF RIVERSIDE, CALIFORNIA
 PUBLIC WORKS DEPARTMENT
 APPROVED BY *[Signature]* DATE 11/8/76
 DIRECTOR OF PUBLIC WORKS

*AS BUILT 3:71 KPT
 SEWER PLAN & PROFILE
 TRACT NO 5913
 MARY STREET
 ACCOUNT No. S-1054
 DRAWING NUMBER 5 OF 5
 SHEET 5 OF 5
 SCALE: HORIZ 1"=40' VERT 1"=4'