

INDEX MAP
SCALE 1" = 60'

NOTICE TO CONTRACTOR

The existence and location of underground utility pipes or structures shown on these plans are obtained by a search of the available records. To the best of our knowledge there are no existing utilities except as shown on these plans.

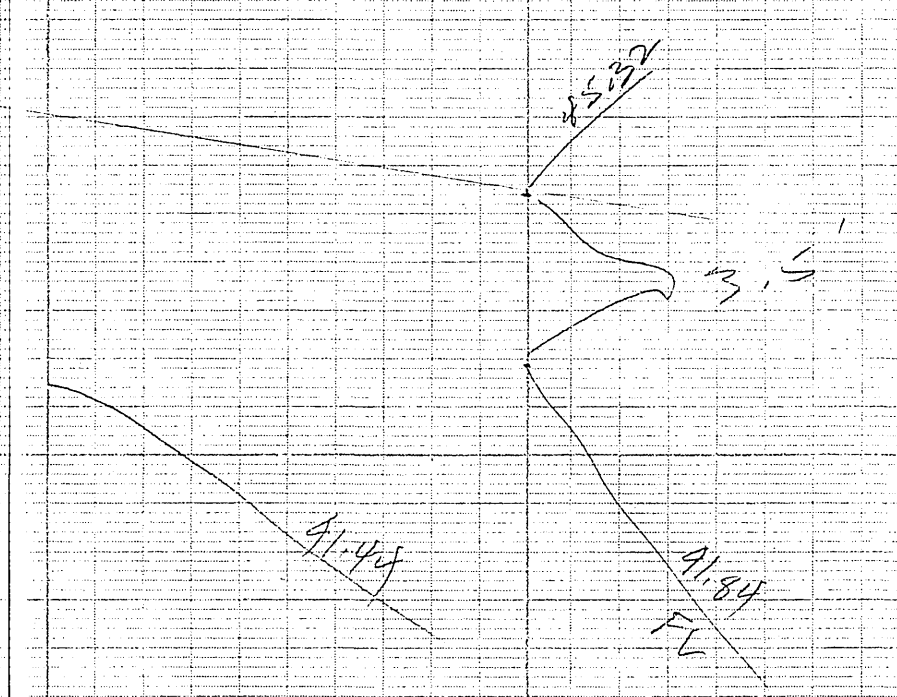
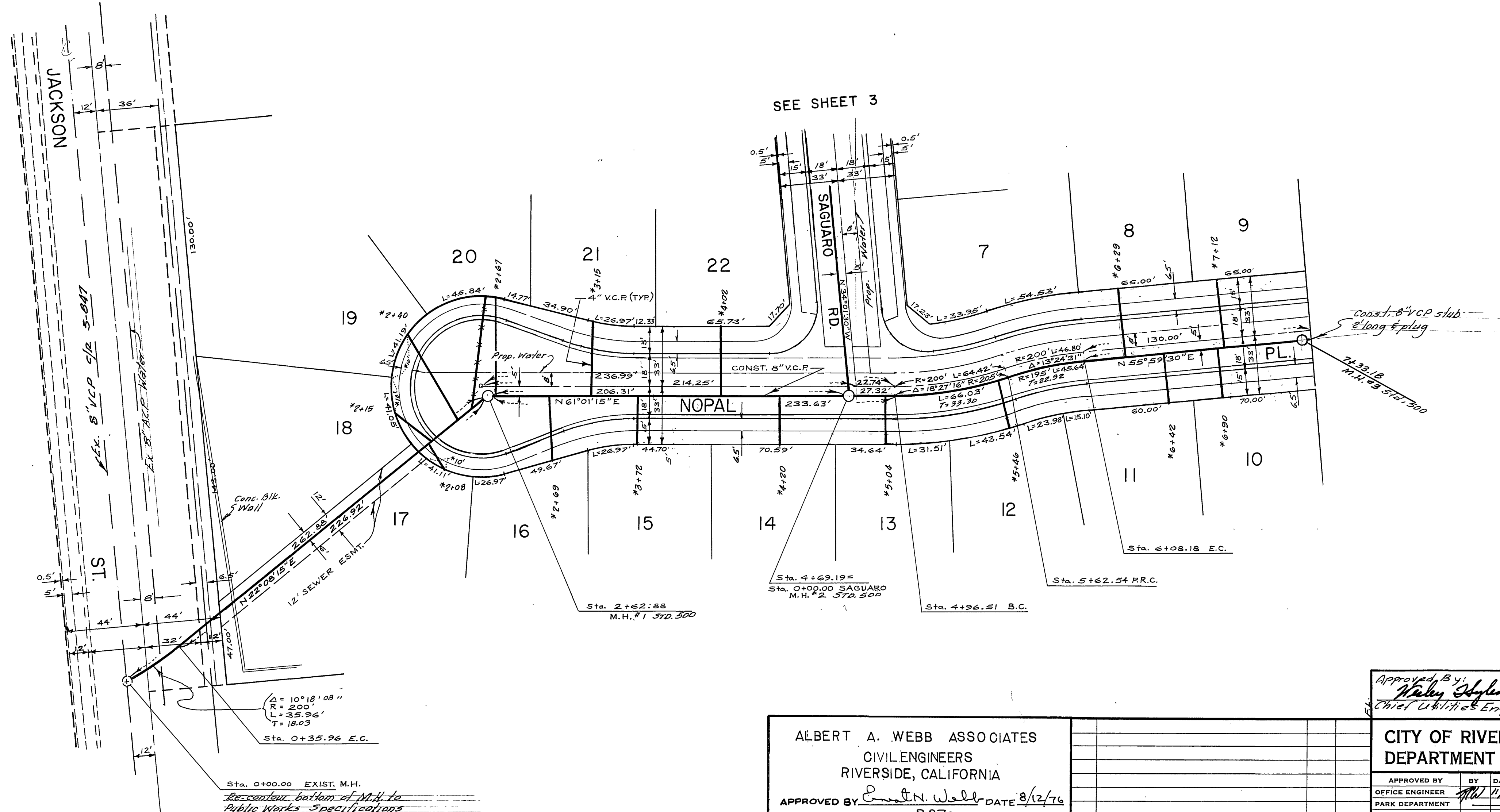
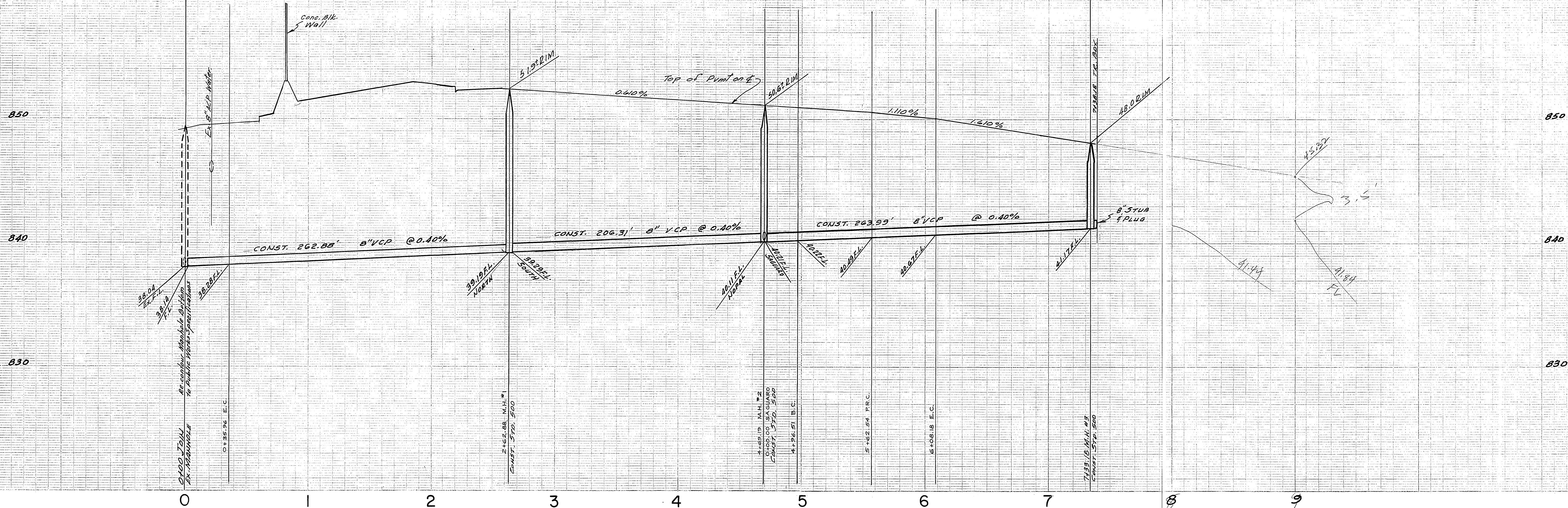
The Contractor is required to take due precautionary measures to protect the utility lines shown and any other lines not of record or not shown on these plans.

GENERAL NOTES

1. Construction shall be in accordance with standard specifications for Public Works Construction, 1976 Edition, and City of Riverside Standard Drawings.
2. It shall be the responsibility of the Contractor to clear the right of way in accordance with the provisions of law as it affects each utility including irrigation lines and appurtenances and at no cost to the city.
3. Pipe shall be bedded per Case I, Standard Drawing No. 452, unless otherwise specified on plans.
4. Location of Wyes and Laterals to be determined at the direction of the owner.
5. All stubs and laterals to be constructed in accordance with standard Drawing 562. Stubs to be plugged and capped.
6. Manhole frames and covers to be set as noted in profile by Sewer Contractor after final paving of streets.
7. Laterals are to be 4" VCP & extended to property line.
8. Encase Sewer 4.5' each side of Proposed Water main crossing per Public Utilities Drawing C.M.D. 023, Type B.
9. Contractor is to verify existing sewer elevation prior to construction.
10. A plug shall be installed and will remain in place where the new sewer connects with the existing sewer until the new sewer is accepted by the City.

BENCH MARK
Elev 845.589 City B.M. F54
1/4" nail and 1/4" in. dia. wire
capped head with on N.W. side
of Monroee St, 222 E. 5th St, 93

<p>ALBERT A. WEBB ASSOCIATES CIVIL ENGINEERS RIVERSIDE, CALIFORNIA</p> <p>APPROVED BY: <i>D. N. Webb</i> DATE: 8/12/76 R.E. No. 9876</p> <p>W.O. 74-107 FOR Brattain Const Co F.B. 1027</p>	<p>Approved By: <i>Wesley Taylor</i> 8-20-76 Chief Civil Engr - Water</p> <p>CITY OF RIVERSIDE, CALIFORNIA PUBLIC WORKS DEPARTMENT</p> <p>APPROVED BY: <i>[Signature]</i> BY DATE: <i>[Signature]</i> PRINCIPAL ENGINEER PARK DEPARTMENT TRAFFIC DIVISION CHIEF PUB. WKS. ENGR.</p> <p>DESIGNED BY: REC. DRAWN BY: L.R.M. CHECKED BY: B.M.</p>	<p>*AS BUILT 3-77 HPT</p> <p>SEWER PLAN PROFILE</p> <p>TRACT NO 5486 INDEX SHEET</p> <p>DATE: 11/18/76</p> <p>SCALE: As Shown</p>	<p>INDEXED</p> <p>ACCOUNT No.</p> <p>DRAWING NUMBER</p> <p>S-1055</p> <p>SHEET 1 OF 3</p> <p>74-107-B</p>
---	--	---	---



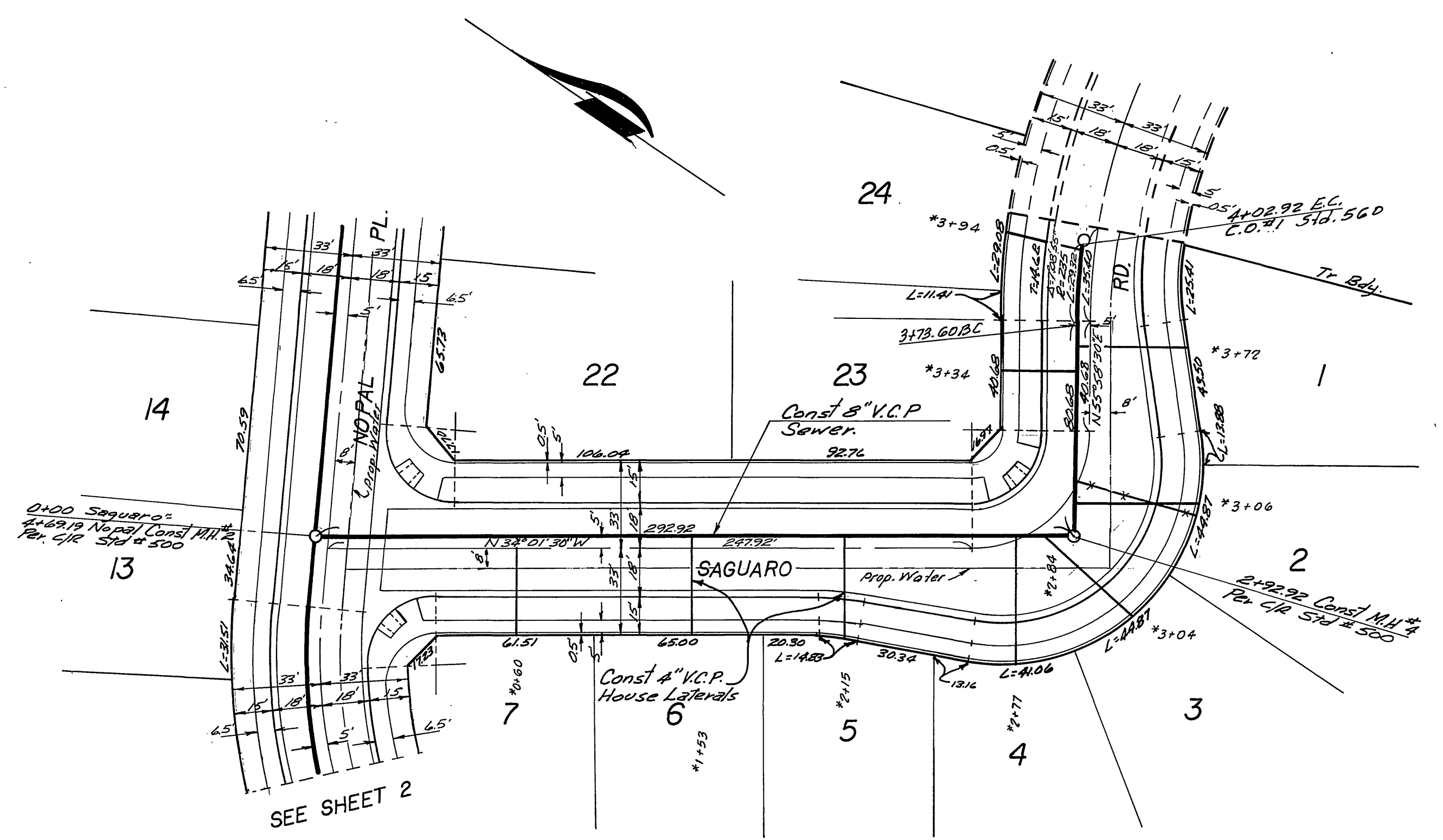
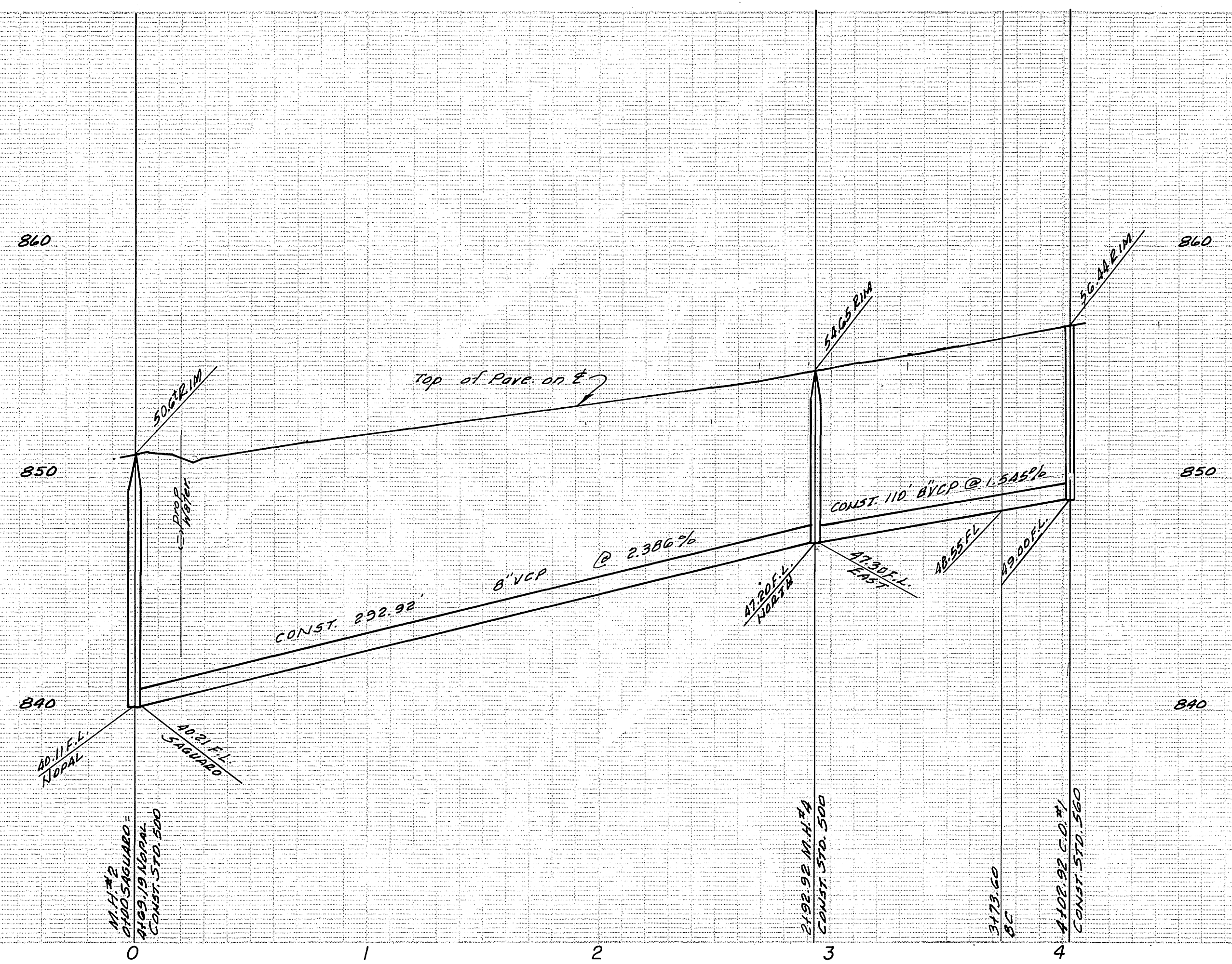
BENCH MARK
 Elev. 845.599, City B.M. F.S. 44
 1/4" nail and tag in E.W. Hwy Co
 canal head wall on N.W. side
 of Menard St, Sta. F.S. 539/53.

ALBERT A. WEBB ASSOCIATES
 CIVIL ENGINEERS
 RIVERSIDE, CALIFORNIA
 APPROVED BY: *Albert A. Webb* DATE: 8/12/76
 R.E. No. 9876

Approved By: *Walter Styler* DATE: 8-20-76
 Chief Utilities Engineer - Water
 CITY OF RIVERSIDE, CALIFORNIA
 DEPARTMENT OF PUBLIC WORKS
 APPROVED BY: *Walter Styler* DATE: 8-20-76
 OFFICE ENGINEER
 PARK DEPARTMENT
 TRAFFIC DIVISION
 ASSISTANT CITY ENGINEER

SEWER PLAN & PROFILE
 NOPAL PLACE
 TRACT NO. 5486
 PROJECT NO. 76-107-B
 S-1055
 SHEET 2 OF 3
 HORIZ. SCALE: 1" = 40'
 VERT. SCALE: 1" = 4'
 FILE NO. 76-107-B





BENCH MARK
 Elev 845.599 City B.M. F.S.H
 1/4" nail and 1/2" dia. Riv. W.P. Co
 canal head well on W. side
 of Monroe St, 476 F.B. 8.30.88.

ALBERT A. WEBB ASSOCIATES
 CIVIL ENGINEERS
 RIVERSIDE, CALIFORNIA
 APPROVED BY: *R. A. Webb* DATE: 8/12/76
 R.E. No. 9876

MARK	REVISIONS	APPR.	DATE

Approved By: *Walter J. ...*
 Chief Utility Engineer - Water
 DATE: 8/20/76

CITY OF RIVERSIDE, CALIFORNIA
 PUBLIC WORKS DEPARTMENT

APPROVED BY: *[Signature]*
 PRINCIPAL ENGINEER
 PARK DEPARTMENT
 TRAFFIC DIVISION
 CHIEF PUB. WKS. ENGR.
 DATE: 11/15/76

*AS BUILT 3-77 KPT

SEWER PLAN & PROFILE
 TRACT NO 5486
 SAGUARO RD.

SCALE: Horiz 1"=40' Vert 1"=4'

ACCOUNT No.
 DRAWING NUMBER
 S-1055
 SHEET 3 OF 3
 76-107-B