

INDEX MAP
NO SCALE

GENERAL NOTES

1. CONSTRUCTION SHALL BE IN ACCORDANCE WITH THE STANDARD SPECIFICATIONS FOR PUBLIC WORKS CONSTRUCTION, 1975 EDITION AND CITY OF RIVERSIDE STANDARD DRAWINGS.
2. IT SHALL BE THE RESPONSIBILITY OF THE CONTRACTOR TO CLEAR THE RIGHT OF WAY IN ACCORDANCE WITH THE PROVISIONS OF THE LAW AS IT AFFECTS EACH UTILITY INCLUDING IRRIGATION LINES AND APPURTENANCES AND AT NO COST TO THE CITY.
3. THE PIPE SHALL BE BEDDED PER CASE 1, STANDARD DRAWING NO. 453, UNLESS OTHERWISE SPECIFIED ON THE PLANS.
4. LOCATION OF WYES AND LATERALS TO BE DETERMINED AT THE TIME OF CONSTRUCTION AT THE DIRECTION OF THE ENGINEER.
5. ALL STUBS AND LATERALS TO BE CONSTRUCTED PER STANDARD DRAWING NO. 562. STUBS SHALL BE PLUGGED AND CAPED.
6. MANHOLE FRAMES AND COVERS TO BE SET TO FINISH GRADE BY THE SEWER CONTRACTOR AFTER THE FINAL PAVING OF STREETS.
7. LATERALS TO BE 4" VCP AND EXTENDED TO THE PROPERTY LINE.
8. A PLUG SHALL BE INSTALLED AND WILL REMAIN IN PLACE WHERE THE NEW SEWER CONNECTS WITH THE EXISTING SEWER UNTIL THE NEW SEWER IS ACCEPTED BY THE CITY.
9. CONTRACTOR IS TO EXPOSE EXISTING SEWER AND CONTACT THE ENGINEER FOR VERIFICATION OF EXISTING LOCATION AND ELEVATION.
10. ADJUST (A) EXISTING, ON-SITE MANHOLES TO FINISH LOT GRADE AFTER FINAL GRADING AS NOTED ON INDEX MAP.

NOTICE TO CONTRACTOR

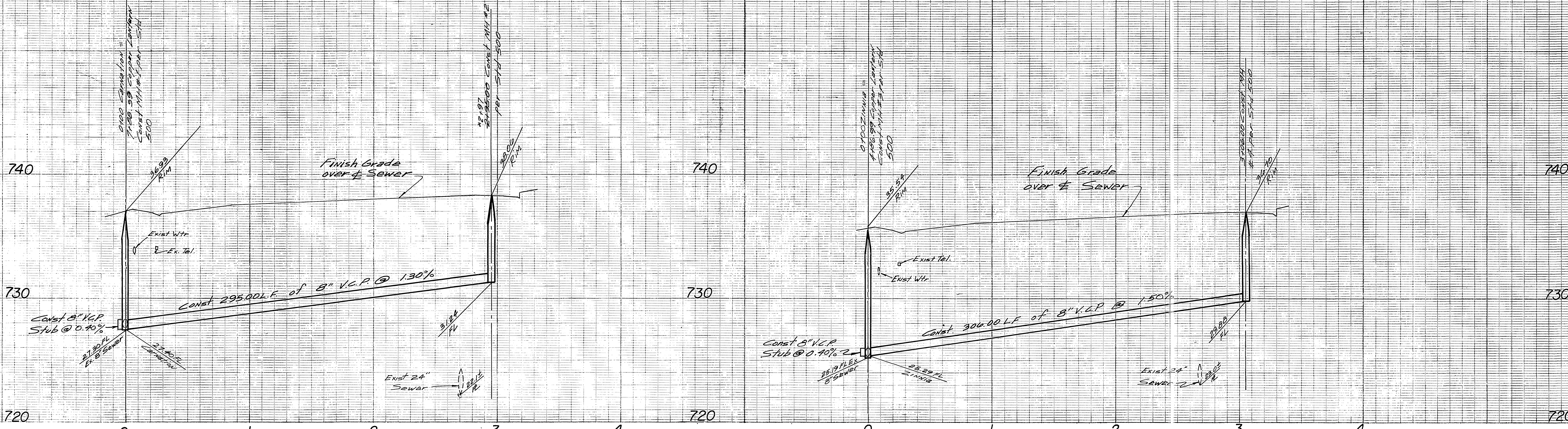
THE EXISTENCE AND LOCATION OF ANY UNDERGROUND UTILITY PIPES OR STRUCTURES SHOWN ON THESE PLANS ARE OBTAINED BY A SEARCH OF THE AVAILABLE RECORDS. TO THE BEST OF OUR KNOWLEDGE, THERE ARE NO EXISTING UTILITIES EXCEPT AS SHOWN ON THESE PLANS.

THE CONTRACTOR IS REQUIRED TO TAKE DUE PRECAUTIONARY MEASURES TO PROTECT THE UTILITY LINES SHOWN AND ANY OTHER LINES NOT OF RECORD OR NOT SHOWN ON THESE PLANS.

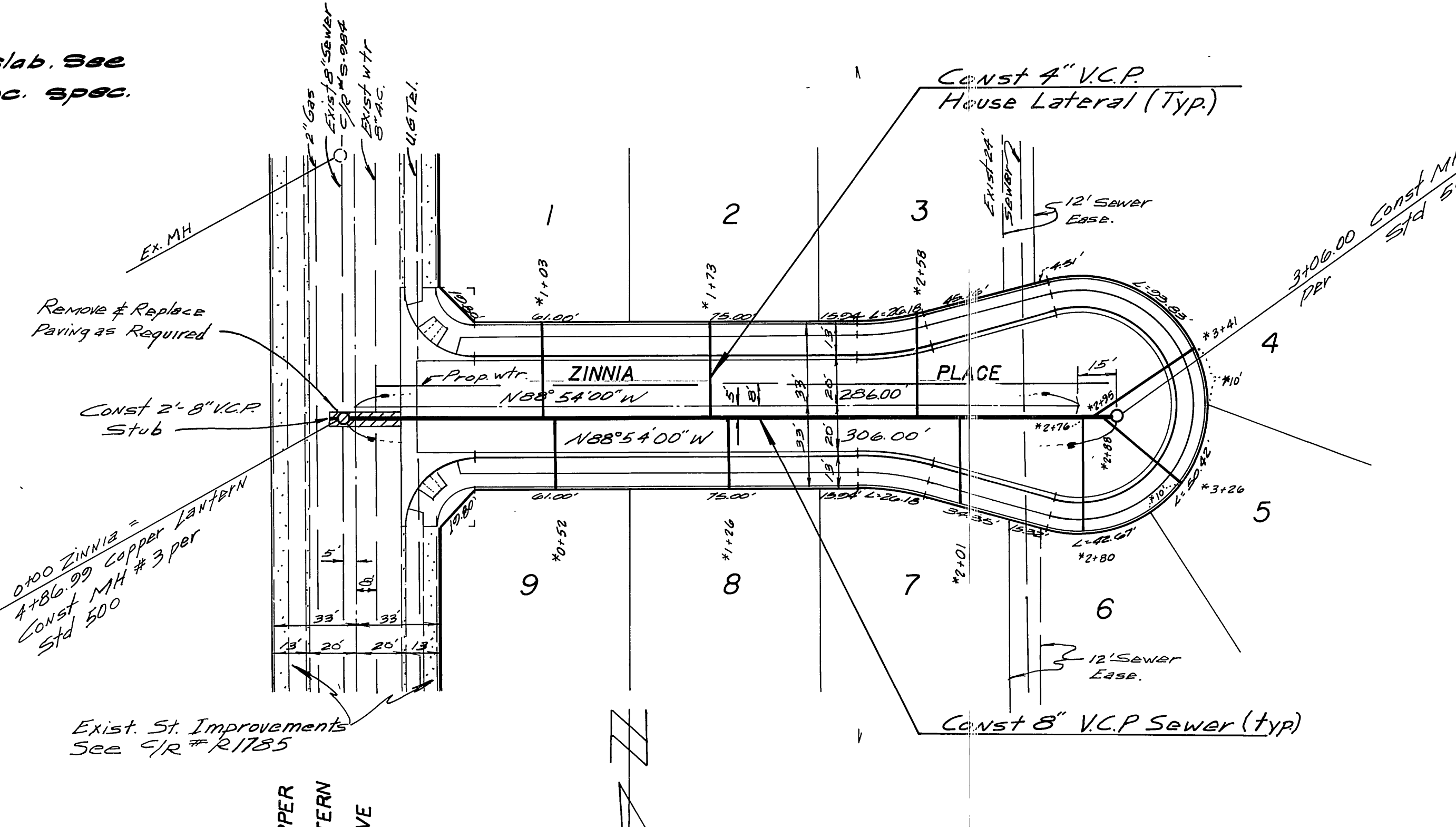
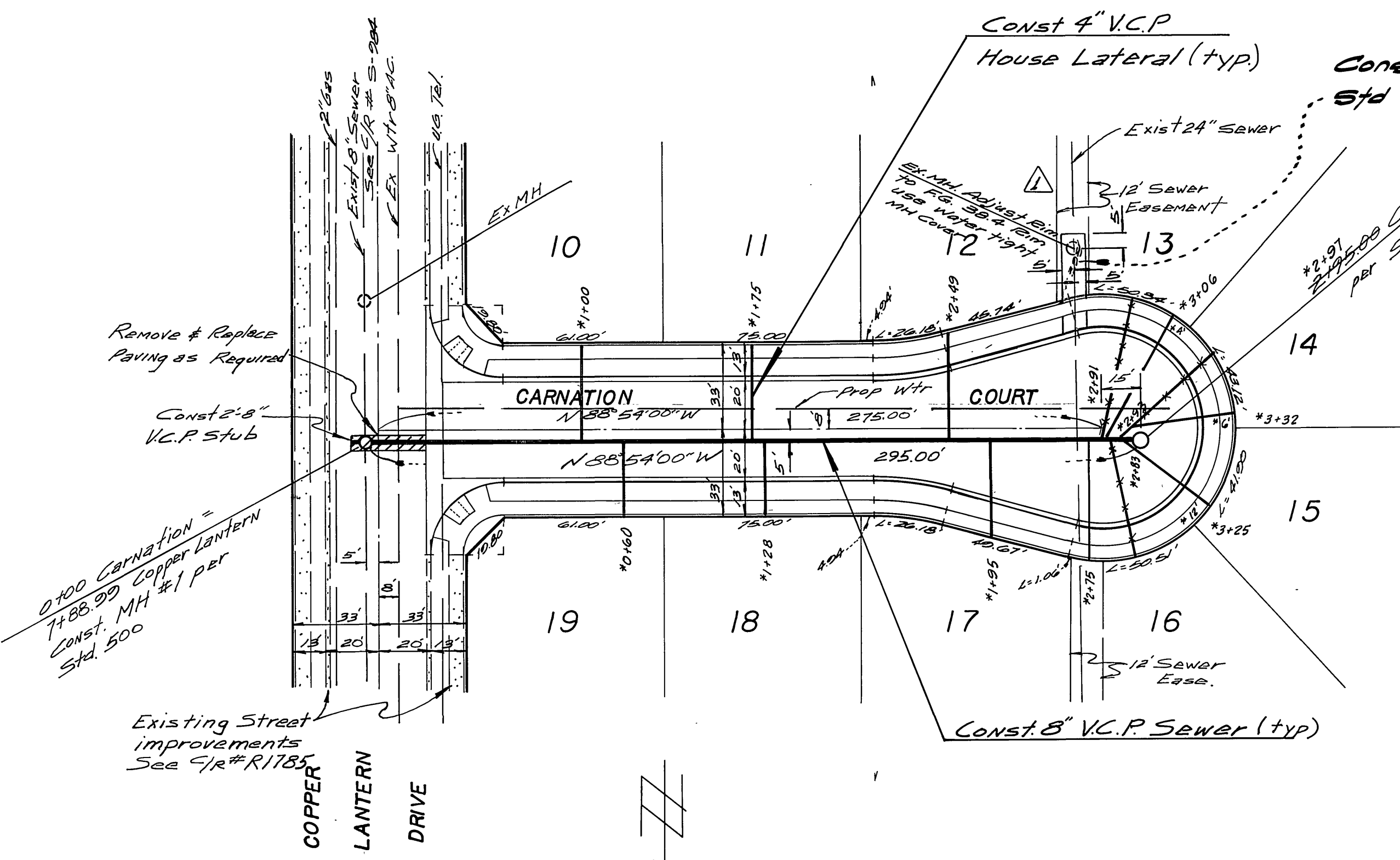
BENCH MARK

ELEVATION 733.31 CITY OF RIVERSIDE G30, TOP OF BRASS DISC IN WELL AT A.P. IN ARLINGTON AVENUE, 500' EAST OF LAKE STREET.

ALBERT A. WEBB ASSOCIATES CIVIL ENGINEERS RIVERSIDE, CALIFORNIA APPROVED BY <i>L. A. Mancini</i> DATE 8-10-76 R.E. No. 6056		APPROVED BY <i>Walter Lyden</i> CHIEF UTILITIES ENGINEER, WATER-DATE 10-19-76	*AS BUILT 3-77 RPT	INDEXED ACCOUNT No. DRAWING NUMBER
		CITY OF RIVERSIDE, CALIFORNIA PUBLIC WORKS DEPARTMENT	SEWER PLAN & PROFILE TRACT 7622-1	S-1056 SHEET 1 OF 3
w.o.76-193 FOR: Home and Country F.B.1029	DESIGNED BY <i>RLT</i> DRAWN BY <i>MLC</i> CHECKED BY <i>SDM</i>	APPROVED BY <i>William S. Darden</i> DIRECTOR OF PUBLIC WORKS DATE 11/8/76	SCALE: AS NOTED	INDEXED ACCOUNT No. DRAWING NUMBER S-1056 SHEET 1 OF 3 76-193-B



Note: See Sheet 1 for General Construction Notes.



-CAUTION-
PACIFIC TELEPHONE
CABLES UNDERGROUND
BEFORE EXCAVATING
CALL COLLECT:
 7:30 A.M. to 5 P.M. After Hours & Holidays
 Orange County 714-633-0811 714-547-6606
 Riverside County 714-684-0071 714-547-6606
 Inyo County 714-684-0071 714-547-6606
 San Bernardino County 714-684-0071 714-547-6606
 Los Angeles County 213-621-3111
 Ventura County 213-621-3111
 San Diego County 714-298-0595 714-232-0027
24 HOUR SERVICE
FOR FREE CABLE LOCATING SERVICE

BENCH MARK
 City of Riverside 6-3-D Top of Brass Disc in Well in AP. in Arlington Ave., 500' East of Lake St. Elev 733.31

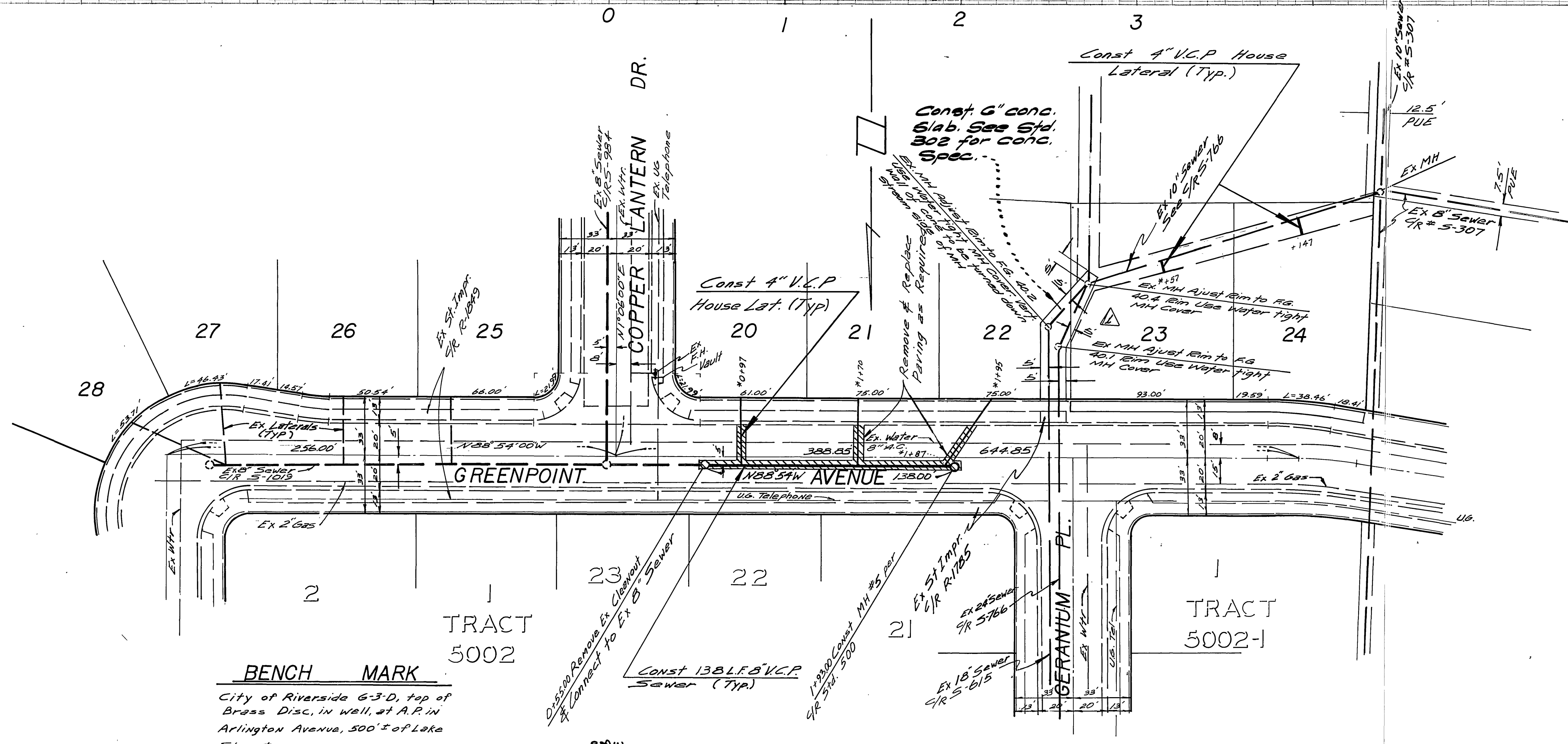
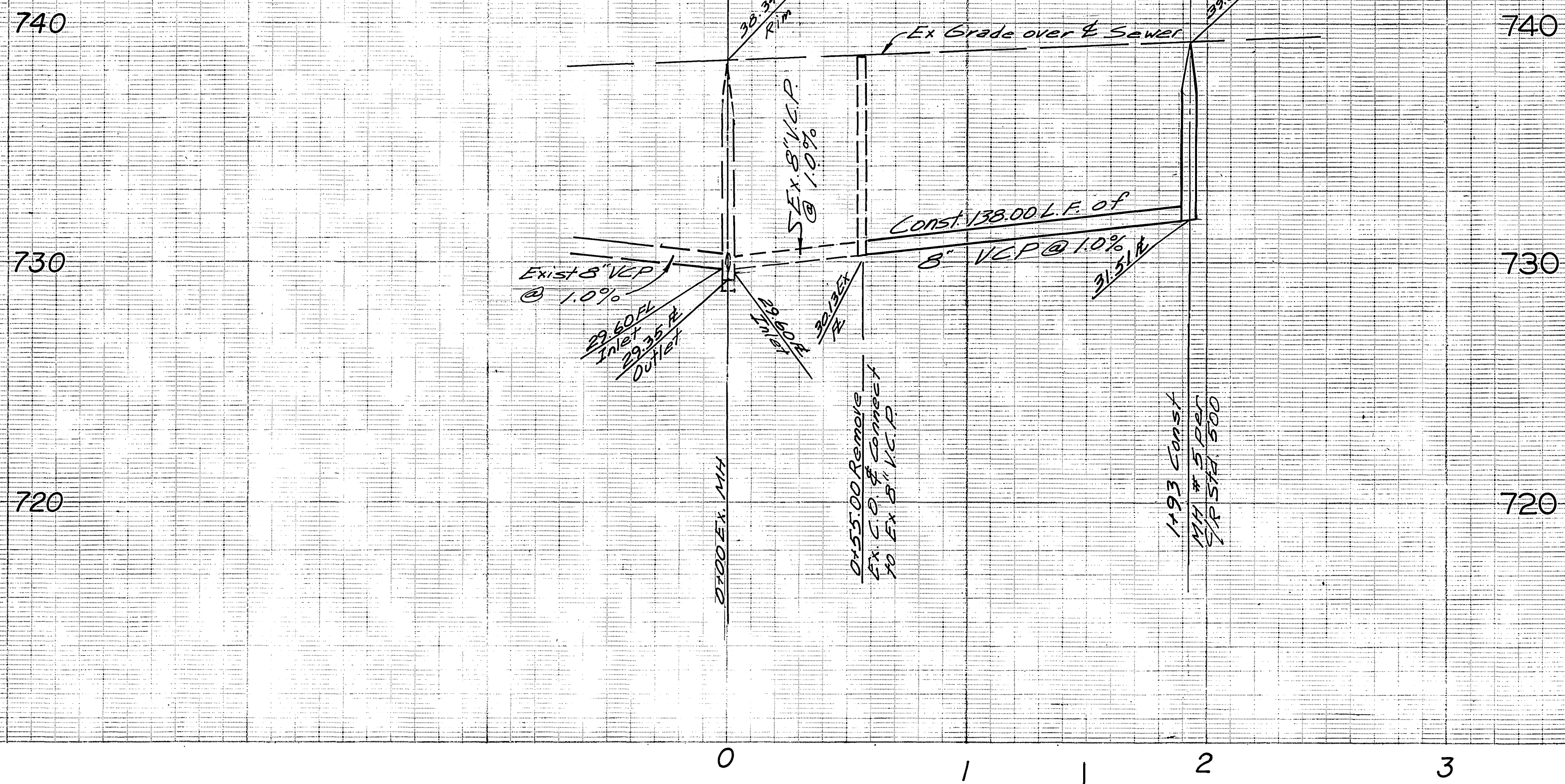
ALBERT A. WEBB ASSOCIATES
 CIVIL ENGINEERS
 RIVERSIDE, CALIFORNIA
 APPROVED BY: *L.A. Weir* DATE: 8-10-76
 R.E. No. 16056

Revised on site sewer stub to 11/11/76
 MARK REVISIONS APPR. DATE
 DESIGNED BY: RLT DRAWN BY: MC CHECKED BY: BDM

APPROVED BY: *Wally Hyman* 10-19-76
 CHIEF UTILITIES ENGINEER, WATER - DATE
CITY OF RIVERSIDE, CALIFORNIA
PUBLIC WORKS DEPARTMENT
 APPROVED BY: *W.D. Hansen*
 DIRECTOR OF PUBLIC WORKS
 DATE: 11/8/76

*AS BUILT 3-77 RPT
SEWER PLAN & PROFILE
 TRACT 7622-1
CARNATION COURT
ZINNIA PLACE
 SCALE: Horiz. 1" = 40' Vert. 1" = 4'

ACCOUNT No. **76-193-B**
 DRAWING NUMBER **S-1056**
 SHEET **2** OF **3**



BENCH MARK
 City of Riverside G-3-D, top of
 Brass Disc, in well, at A.P. in
 Arlington Avenue, 500' E of Lake
 Street
 ELEV. 733.31

Approved by:
Wesley Hylton
 Chief Engineer
 Water
 10-19-76
 Date

ALBERT A. WEBB ASSOCIATES
 CIVIL ENGINEERS
 RIVERSIDE, CALIFORNIA
 APPROVED BY: *W. A. Webb* DATE: 8-10-76
 R.E. No. 6656
 W.O. 76-123 FOR: Home & Country F.B. 1029

REVISIONS	DATE	BY
Revised on site sewer run to	7/10/76	AW

CITY OF RIVERSIDE, CALIFORNIA
PUBLIC WORKS DEPARTMENT
 APPROVED BY: *W. A. Webb*
 DIRECTOR OF PUBLIC WORKS
 DATE: 11/8/76

SEWER PLAN & PROFILE
 TRACT 7622-1
 GREENPOINT AVENUE
 SCALE: Horiz. 1"=40' Vert. 1"=4'

ACCOUNT No. **S-1056**
 DRAWING NUMBER
 SHEET **3** OF **3**
 76-193-B

-CAUTION-
PACIFIC TELEPHONE
CABLES UNDERGROUND
BEFORE EXCAVATING
 CALL COLLECT

After Hours & Holidays
 7:30 A.M. to 5 P.M.
 Orange County 714-633-0811 714-547-6606
 Riverside County 714-684-0071 714-547-6606
 Inyo County 714-684-0071 714-547-6606
 San Bernardino County 714-684-0071 714-547-6606
 Los Angeles County 213-621-3111 24 HOUR SERVICE
 Ventura County 213-621-3111
 San Diego County 714-298-0595 714-232-0027

FOR FREE CABLE LOCATING SERVICE