

GENERAL NOTES

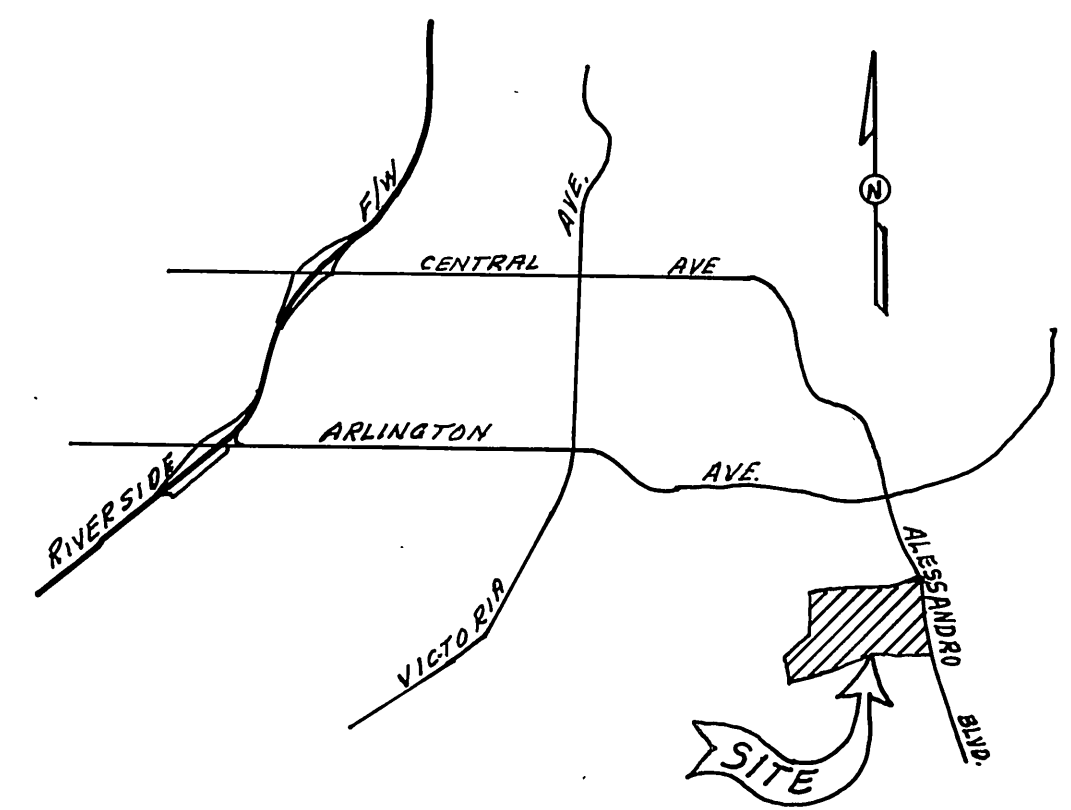
1. Construction shall be in accordance with the Standard Specifications for Public Works Construction 1976 Edition, and the City of Riverside Standard Drawings.
2. It shall be the responsibility of the Contractor to clear the Right of Way in accordance with the provisions of law as it affects each utility including irrigation lines and appurtenances and at no cost to the city.
3. Pipe shall be beveled per Case 7, Standard Drawing No. 452, unless otherwise specified on the plans.
4. Location of wyes and laterals to be determined in the field at the direction of the owner.
5. All stubs and laterals to be constructed in accordance with Standard Drawing No. 562. Stubs shall be plugged and capped.
6. Manhole frames and covers to be set as noted in profiles by sewer Contractor after final paving of streets.
7. Laterals are to be 4" V.C.R. and extended to property line.
8. Prior to construction of sewer Contractor is to expose the existing sewer and contact the Engineer for verification of existing location and elevation.
9. Plugs shall be installed and will remain in place where the new sewer connects with the existing sewer until such time as the new sewer is accepted by the City.

NOTICE TO CONTRACTOR

The existence and location of underground utility pipes or structures shown on these plans are obtained by a search of the available records. To the best of our knowledge there are no existing utilities except as shown on these plans.

The Contractor is required to take due precautionary measures to protect the utility lines shown and any other lines not of record or not shown on these plans.

BENCH MARK: Elev. 1136.542
 C.R. B.M. No. G-7-C, P.K. 111 on curb return SE, Corner Chicago, Arlington and Alessandro.



LOCATION MAP
 NO SCALE

APPROVED BY: Wesley Taylor
 CHIEF UTILITIES ENGINEER, WATER
 DATE: 6-29-76

ALBERT A. WEBB ASSOCIATES
 CIVIL ENGINEERS
 RIVERSIDE, CALIFORNIA
 APPROVED BY: L.A. Wainwright DATE: 6-18-76
 R.E. No. 16056

MARK	REVISIONS	APPR.	DATE

CITY OF RIVERSIDE, CALIFORNIA
 PUBLIC WORKS DEPARTMENT
 APPROVED BY: [Signature] DATE: 7-1-77
 PRINCIPAL ENGINEER
 PARK DEPARTMENT
 TRAFFIC DIVISION
 CHIEF PUB. WKS. ENGR.

SEWER PLAN & PROFILE
INDEX
 TRACT 5423-2
 SCALE: 1"=50'

ACCOUNT NO. _____
 DRAWING NUMBER
S-1057
 SHEET 1 OF 5
 76-40-B

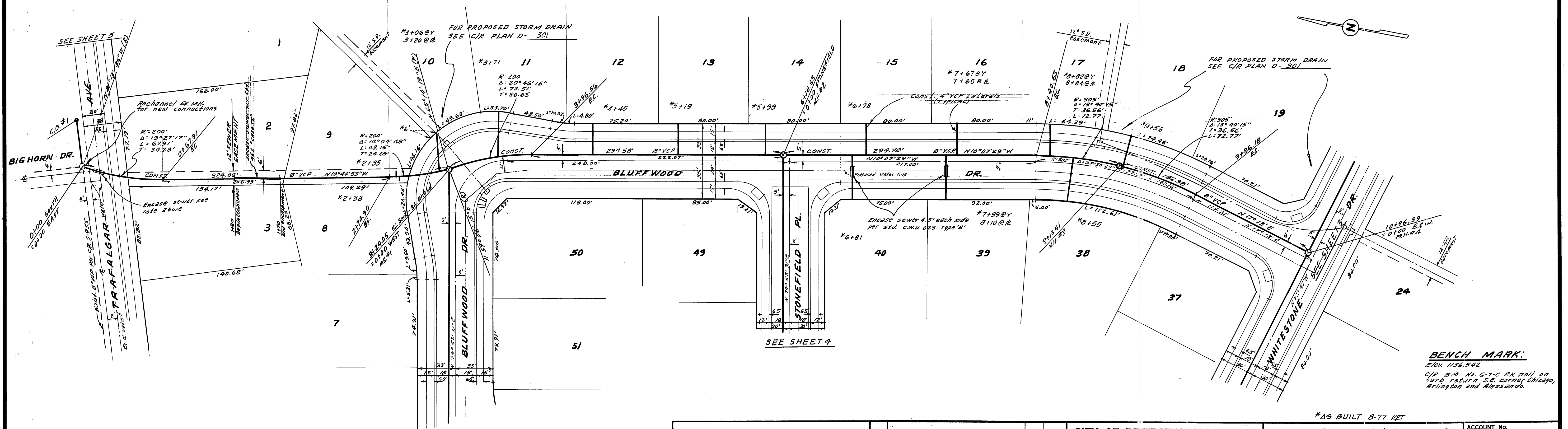
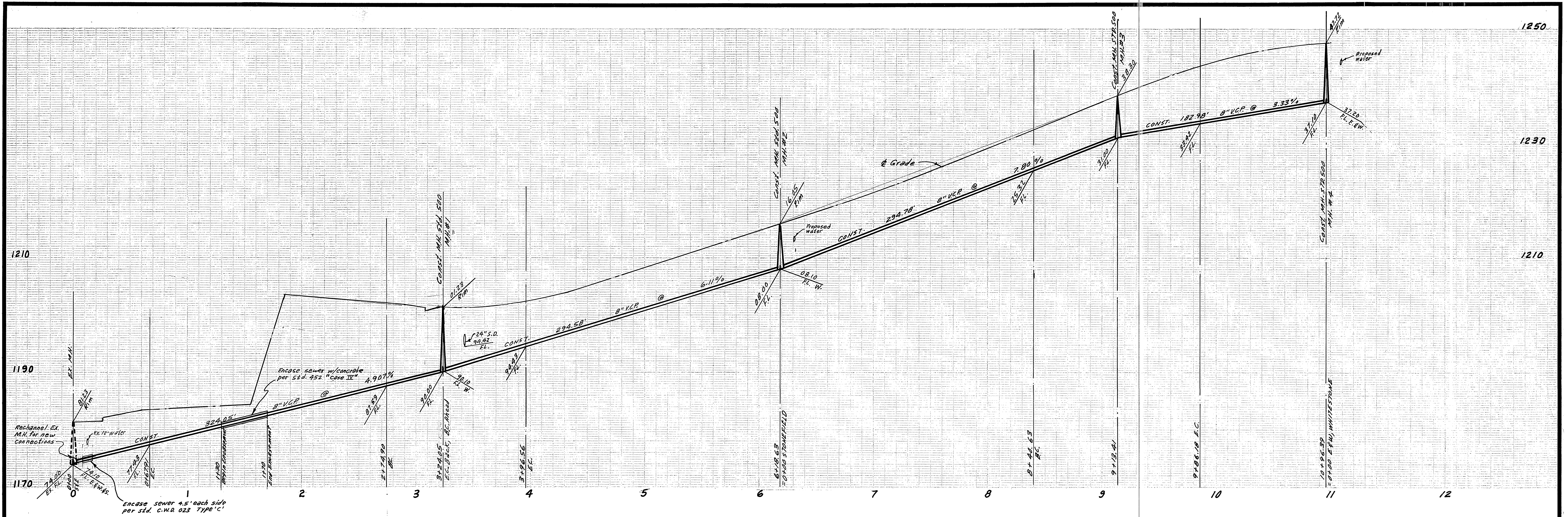
*AS BUILT 8-77 KPT

INDICED RR

W.G.76-40 FOR PRESLEY COMPANY F.B. 1022

DESIGNED BY BEL DRAWN BY BEL CHECKED BY [Signature]

DATE: 7-1-77



APPROVED BY:
Harley J. Fisher
 CHIEF UTILITIES, WATER
 DATE: 6-29-76

ALBERT A. WEBB ASSOCIATES
 CIVIL ENGINEERS
 RIVERSIDE, CALIFORNIA
 APPROVED BY: *R.A. Wamert* DATE: 6-18-76
 R.E. No. 16056
 W.O. 76-40 FOR: PRESLEY COMPANY F.B. 1022

MARK	REVISIONS	APPROVAL	DATE

CITY OF RIVERSIDE, CALIFORNIA
 PUBLIC WORKS DEPARTMENT
 APPROVED BY: *[Signature]* DATE: 6-17-77
 PRINCIPAL ENGINEER
 PARK DEPARTMENT
 TRAFFIC DIVISION
 CHIEF PUB. WKS. ENGR.

SEWER PLAN & PROFILE
 BLUFFWOOD DRIVE
 TRACT 5423-2
 SCALE: 1" = 40' Horiz. - 1" = 8' Vert.

ACCOUNT No.
 DRAWING NUMBER
 5-1057
 SHEET 2 OF 5
 76-40-B

BENCH MARK:
 Elev. 1136.542
 C.R. B.M. No. G-7-C P.M. nail on
 curb return S.E. corner Chicago,
 Arlington and Massena.

*AS BUILT 8-77 KPT

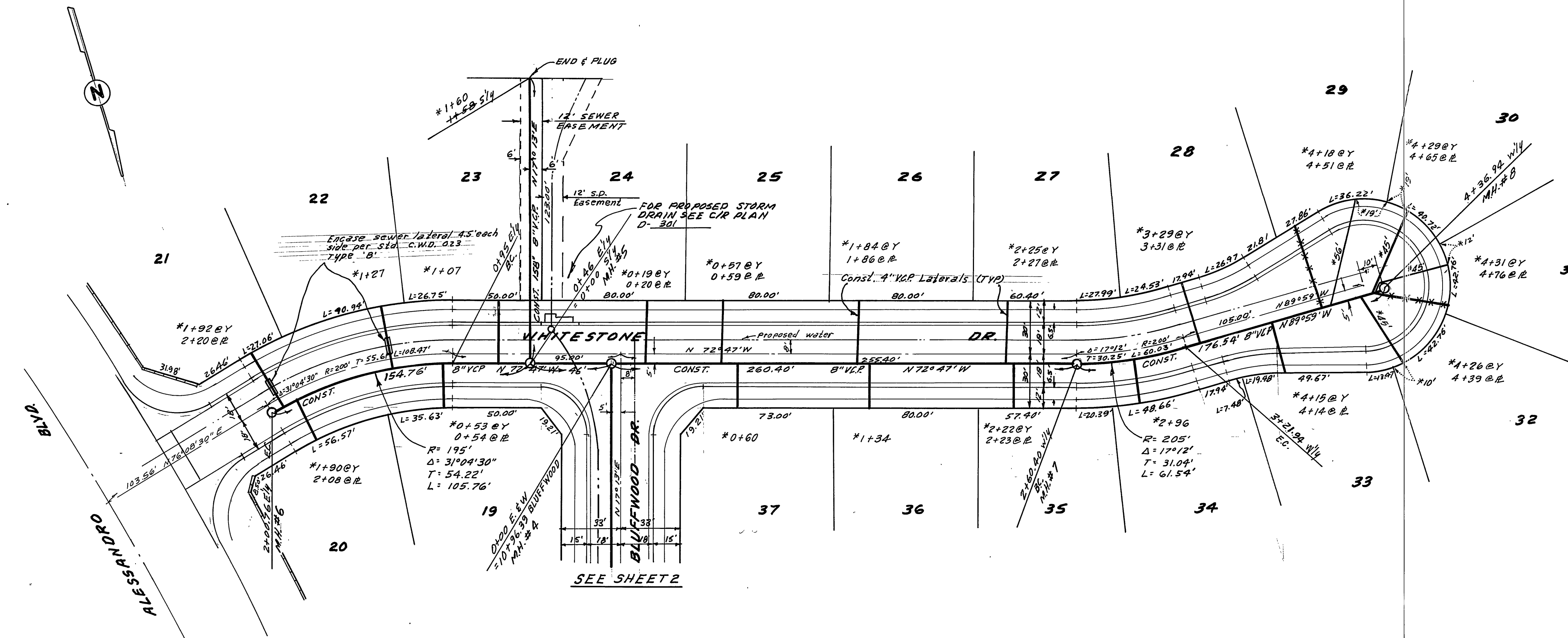
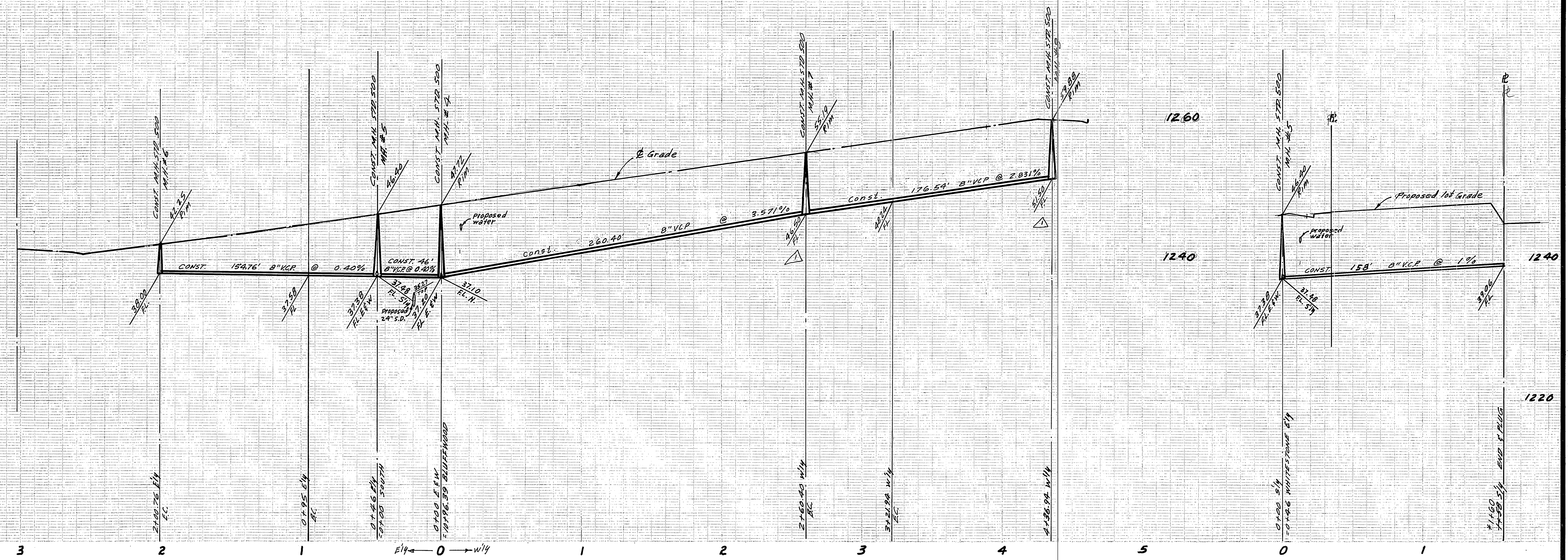
1240

1220

1260

1240

1220



BENCH MARK: Elev 1136.542
 C&R B.M. No. G-7-C P.K. nail on curb
 return S.E. corner Chicago, Arlington
 and Alessandro.

*AS BUILT 8-77 KET

APPROVED BY: *Wesley Ayfle*
 CHIEF UTILITIES ENGINEER, WATER
 DATE: 6-29-76

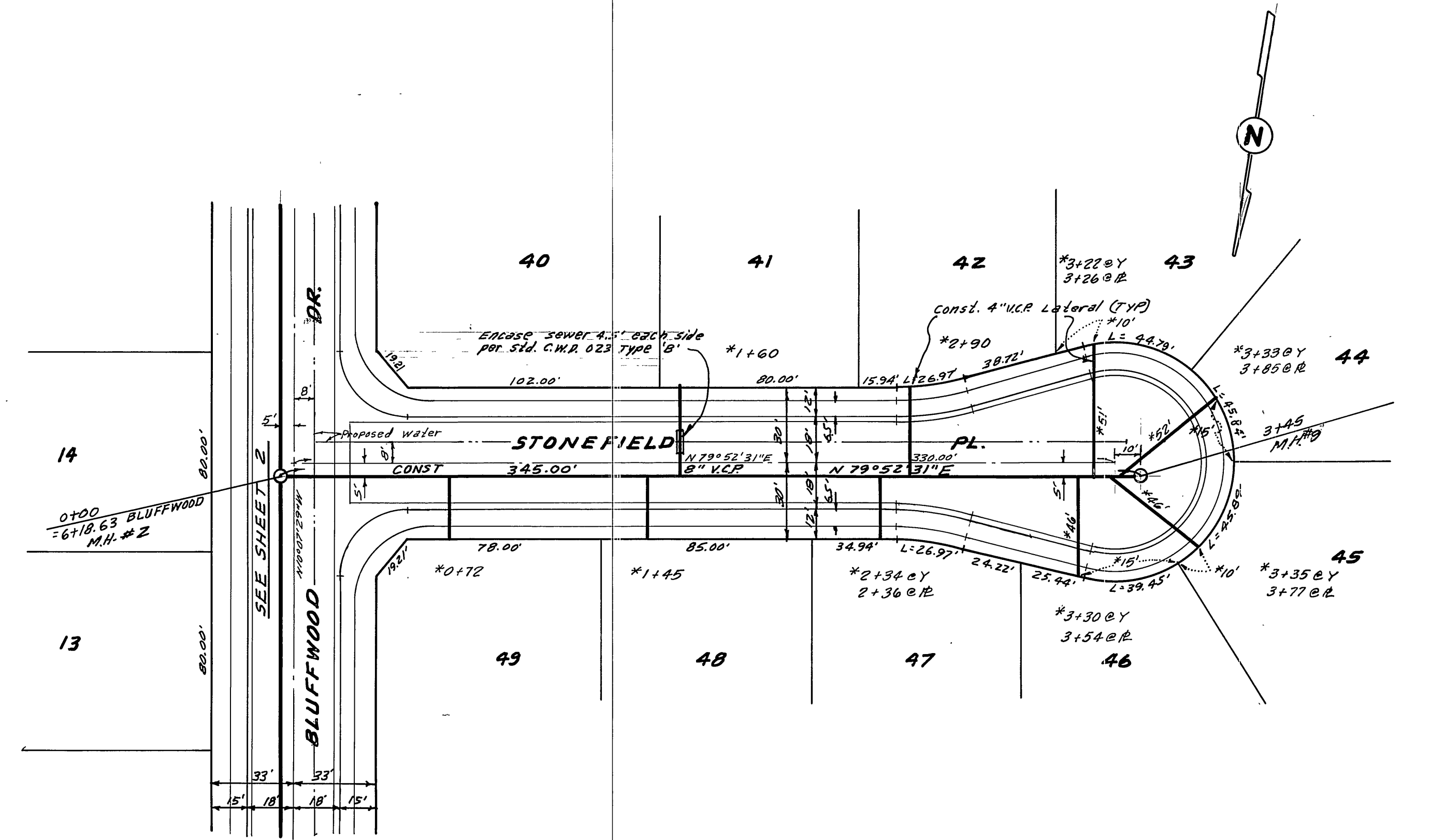
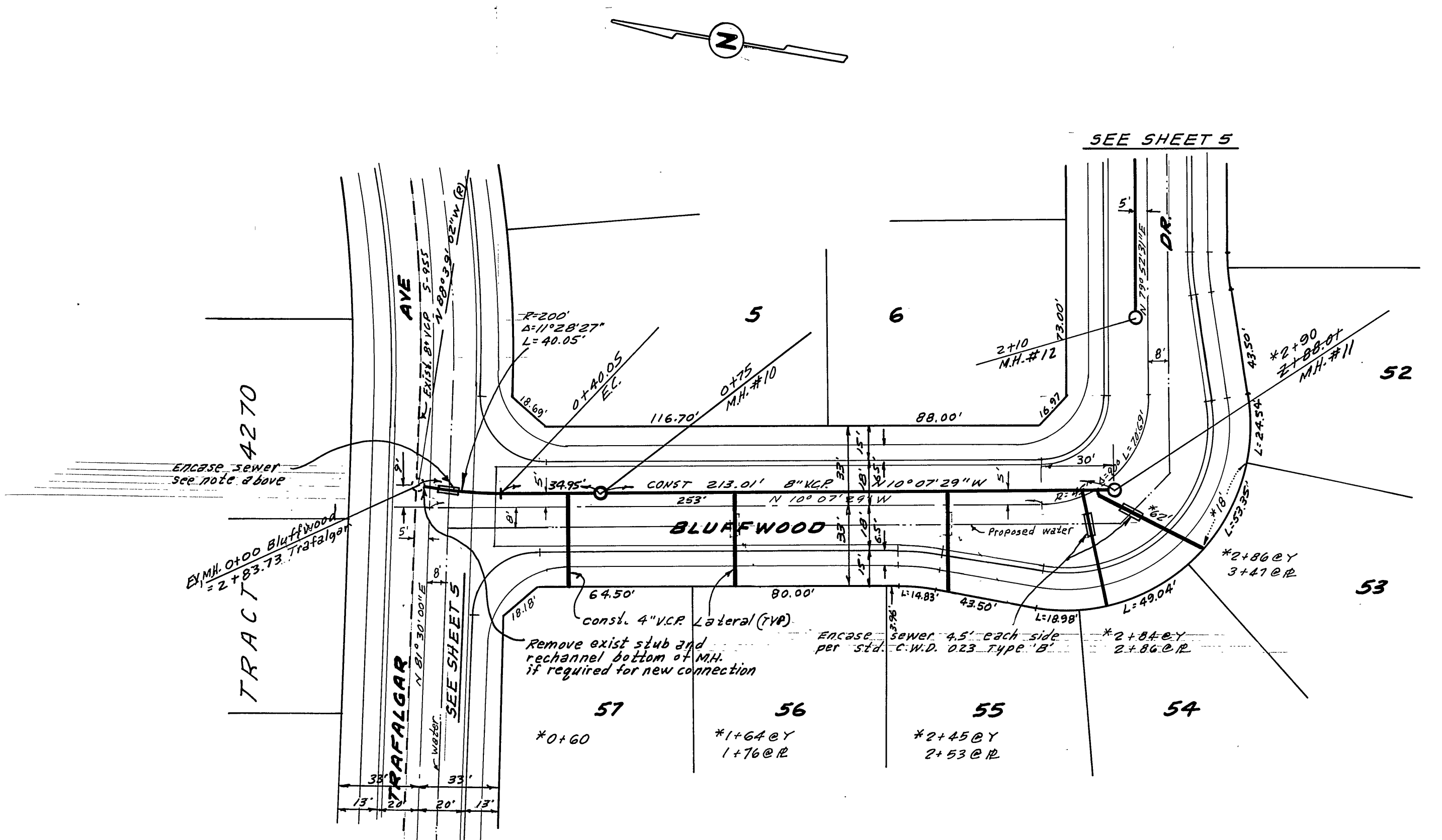
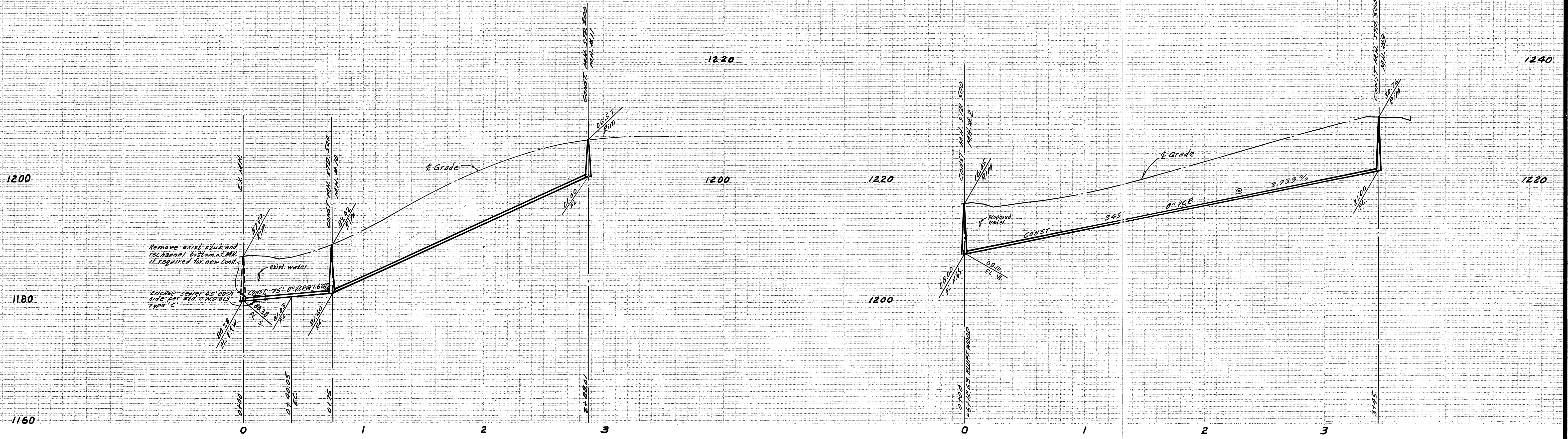
ALBERT A. WEBB ASSOCIATES
 CIVIL ENGINEERS
 RIVERSIDE, CALIFORNIA
 APPROVED BY: *L.D. Hammett* DATE: 6-18-76
 R.E. No. 16056
 W.76-40 FOR: PRESLEY COMPANY F.B. 1022

MARK	REVISIONS	APPR.	DATE
Δ	Lowered Sewer 15' at M.H. 57 & 8	<i>[Signature]</i>	7/17/77

CITY OF RIVERSIDE, CALIFORNIA
 PUBLIC WORKS DEPARTMENT
 APPROVED BY: *[Signature]*
 PRINCIPAL ENGINEER
 PARK DEPARTMENT
 TRAFFIC DIVISION
 CHIEF PUB. WKS. ENGR.
 DATE: 1-17-77

SEWER PLAN & PROFILE
 WHITESTONE DRIVE
 TRACT 5423-2
 SCALE: 1" = 40' Horiz. - 1" = 8' Vert.

ACCOUNT No.
 DRAWING NUMBER
5-1057
 SHEET **3** OF **5**
 76-40-B



BENCH MARK Elev. 1136.542
 O/R B.M. No. G-7-C.P.M. 1911 on curb return S.E. corner Chicago, Arlington and Alessandro.

APPROVED BY: *Wesley Splan*
 CHIEF UTILITIES ENGINEER, WATER
 DATE: 6-29-76

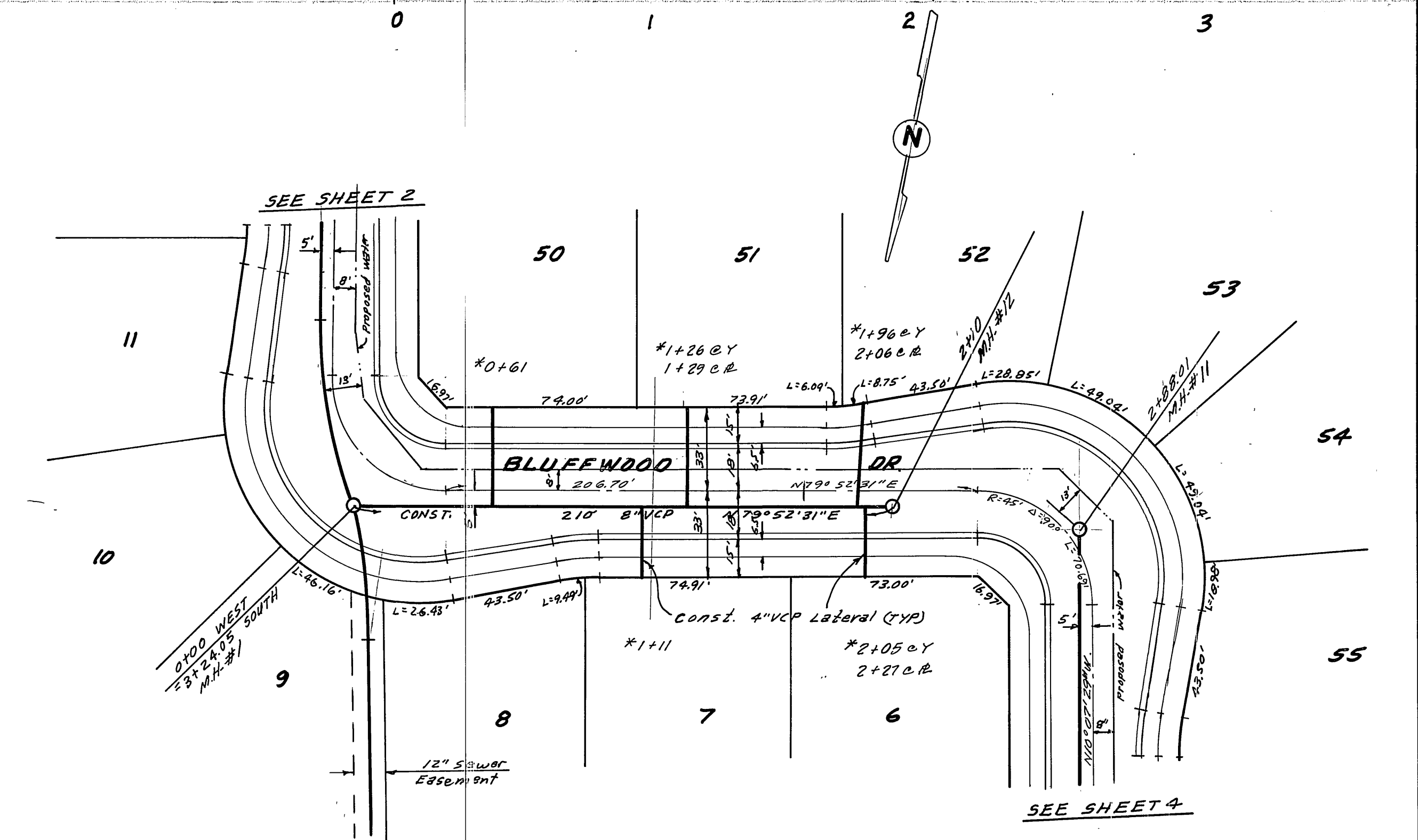
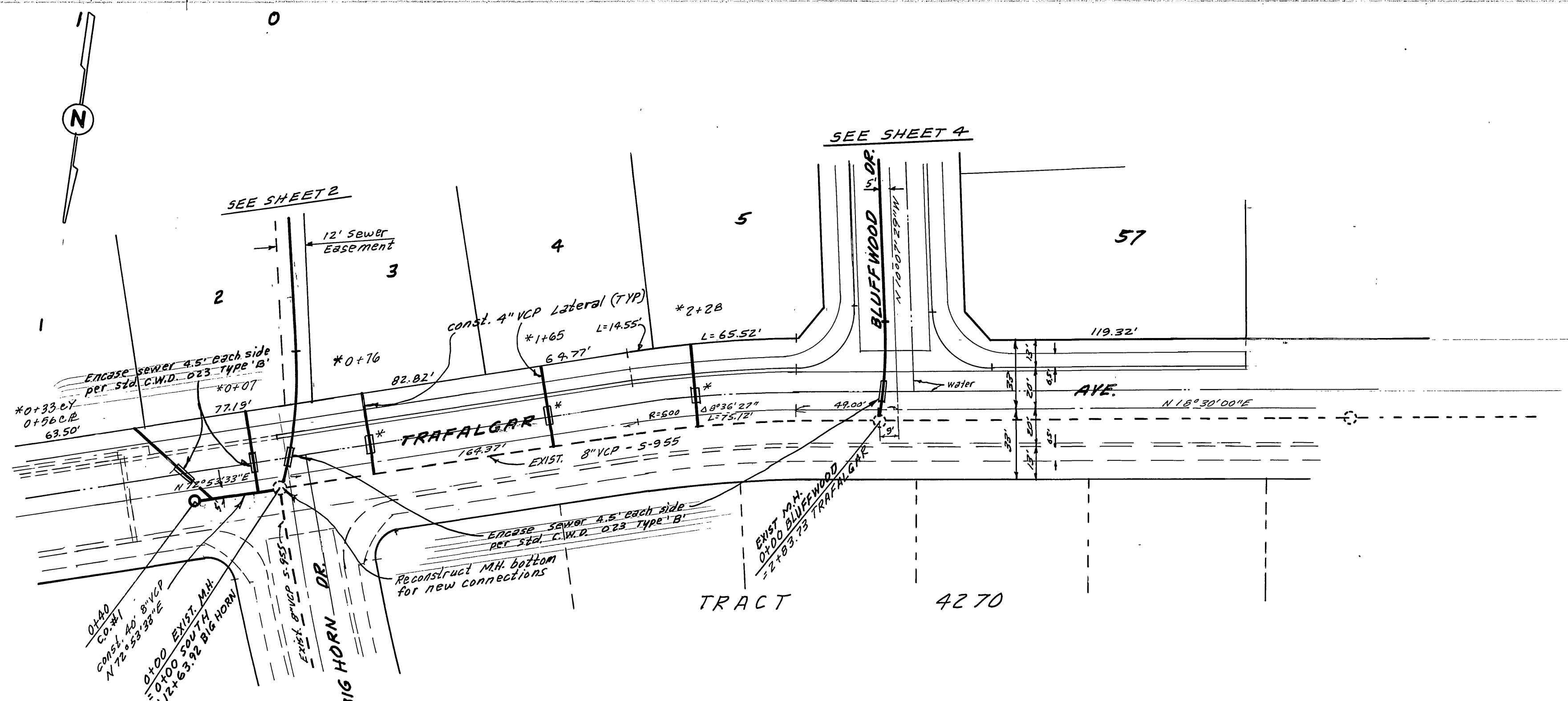
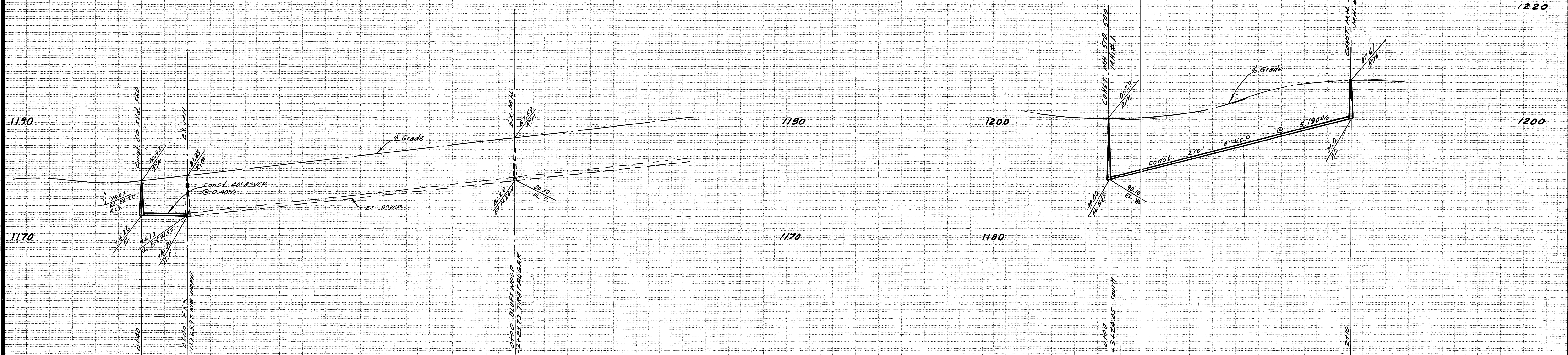
ALBERT A. WEBB ASSOCIATES
 CIVIL ENGINEERS
 RIVERSIDE, CALIFORNIA
 APPROVED BY: *R. B. Wainwright* DATE: 6-18-76
 R.E. No. 16056

MARK	REVISIONS	APPR.	DATE

CITY OF RIVERSIDE, CALIFORNIA
 PUBLIC WORKS DEPARTMENT
 APPROVED BY: *James L. ...* DATE: 1-17-77
 PRINCIPAL ENGINEER
 PARK DEPARTMENT
 TRAFFIC DIVISION
 CHIEF PUB. WKS. ENGR.

SEWER PLAN & PROFILE
STONEFIELD PLACE
BLUFFWOOD DRIVE
TRACT 5423-2
 SCALE: 1" = 40' HORIZ. - 1" = 8' VERT.

ACCOUNT No.
 DRAWING NUMBER
S-1057
 SHEET 4 OF 5
 76-40-B



BENCH MARK: Elev 1136.542
 C.R. S.M. No. G-7-C R.R. nail on curb
 return S.E. corner Chicago, Arlington
 and Alessandro.

APPROVED BY: *Wesley Taylor*
 CHIEF UTILITIES ENGINEER, WATER
 DATE: 6-29-77

ALBERT A. WEBB ASSOCIATES CIVIL ENGINEERS RIVERSIDE, CALIFORNIA APPROVED BY: <i>L.D. Wainwright</i> DATE: 6-18-76 R.E. No. 16056		CITY OF RIVERSIDE, CALIFORNIA PUBLIC WORKS DEPARTMENT APPROVED BY: <i>James Cook</i> PARK DEPARTMENT TRAFFIC DIVISION CHIEF PUB. WKS. ENGR. DATE: 1-17-77		SEWER PLAN & PROFILE BLUFFWOOD DRIVE TRAFALGAR AVENUE TRACT 5423-2 SCALE: 1" = 40' Horiz. - 1" = 8' Vert.		ACCOUNT No. DRAWING NUMBER 5-1057 SHEET 5 OF 5 76-40-B
W.O. 76-40 FOR: PRESLEY COMPANY F.B. 1022		DESIGNED BY: BEL DRAWN BY: BEL CHECKED BY: VICKSON		REVISIONS:		

*AS BUILT 8-77 UPT