

SEWER PLAN INDEX MAP

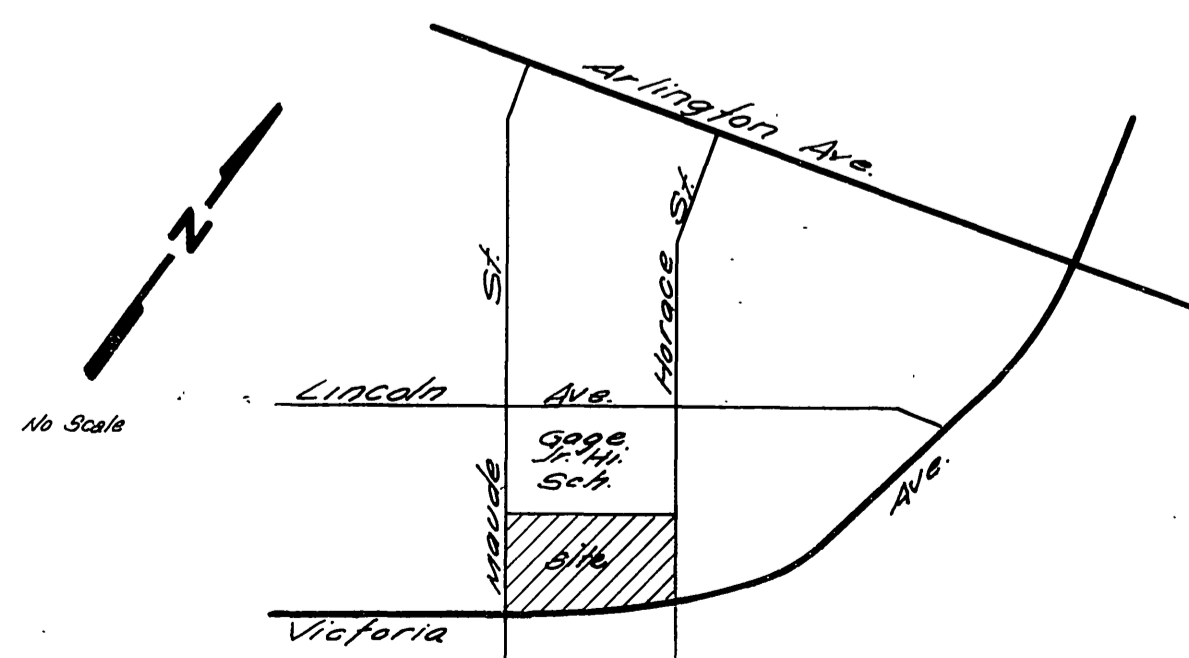
GENERAL SEWER NOTES

1. CONSTRUCTION SHALL BE IN ACCORDANCE WITH THE STANDARD SPECIFICATIONS FOR PUBLIC WORKS CONSTRUCTION, 1978 EDITION, AND CITY OF RIVERSIDE STANDARD DRAWINGS.
2. IT SHALL BE THE RESPONSIBILITY OF THE CONTRACTOR TO CLEAR THE RIGHT OF WAY IN ACCORDANCE WITH THE PROVISIONS OF THE LAW AS IT AFFECTS EACH UTILITY INCLUDING IRRIGATION LINES AND APPURTENANCES AND AT NO COST TO THE CITY.
3. THE PIPE SHALL BE BEDDED PER CASE 3, STANDARD DRAWING NO. 52.
4. LOCATION OF WYES AND LATERALS TO BE DETERMINED AT THE TIME OF CONSTRUCTION AT THE DIRECTION OF THE OWNER.
5. ALL STUBS AND LATERALS TO BE CONSTRUCTED PER STANDARD DRAWING NO. 562. STUBS SHALL BE PLUGGED AND CAPPED.
6. MANHOLE FRAMES AND COVERS TO BE SET TO FINISH GRADE BY THE SEWER CONTRACTOR AFTER THE FINAL PAVING OF STREETS.
7. LATERALS TO BE 4" VCP AND EXTENDED TO THE PROPERTY LINE.
8. A PLUG SHALL BE INSTALLED AND WILL REMAIN IN PLACE WHERE THE NEW SEWER CONNECTS TO THE EXISTING SEWER UNTIL THE NEW SEWER IS ACCEPTED BY THE CITY.

NOTICE TO CONTRACTOR

THE EXISTENCE AND LOCATION OF ANY UNDERGROUND UTILITY PIPES OR STRUCTURES SHOWN ON THESE PLANS ARE OBTAINED BY A SEARCH OF THE AVAILABLE RECORDS. TO THE BEST OF OUR KNOWLEDGE, THERE ARE NO EXISTING UTILITIES EXCEPT AS SHOWN ON THESE PLANS.

THE CONTRACTOR IS REQUIRED TO TAKE DUE PRECAUTIONARY MEASURES TO PROTECT THE UTILITY LINES SHOWN AND ANY OTHER LINES NOT OF RECORD OR NOT SHOWN ON THESE PLANS.



LOCATION MAP

Approved By: *Wesley Allen* 11-23-76
 Chief Utilities Engineer, water Dept

ALBERT A. WEBB ASSOCIATES
 CIVIL ENGINEERS
 RIVERSIDE, CALIFORNIA
 APPROVED BY: *Wesley Allen* DATE 8-26-75
 R.E. No. 21884
 W.C. 75-101 FOR DR. M.H. MAC ARTHUR F.B. 1037

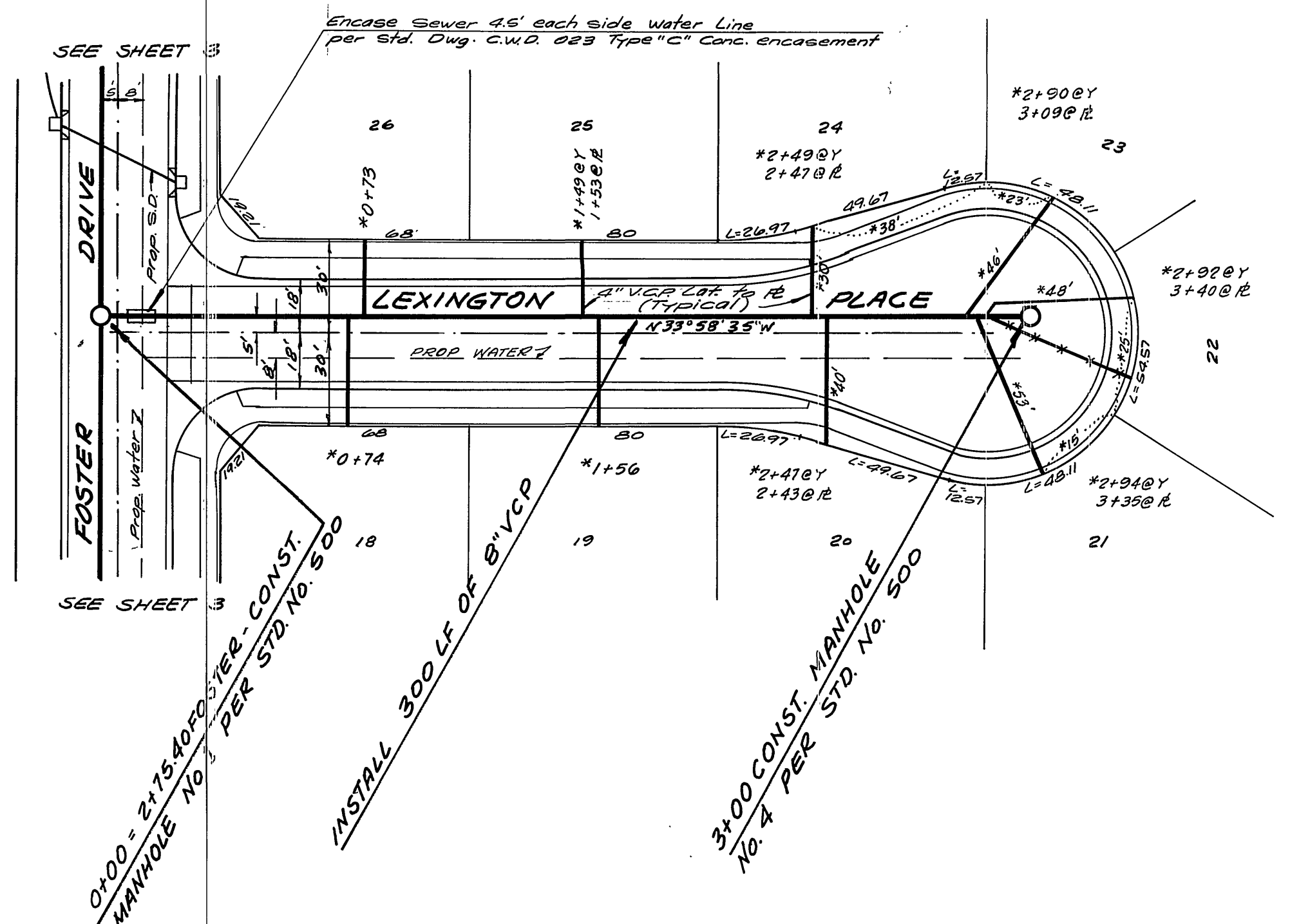
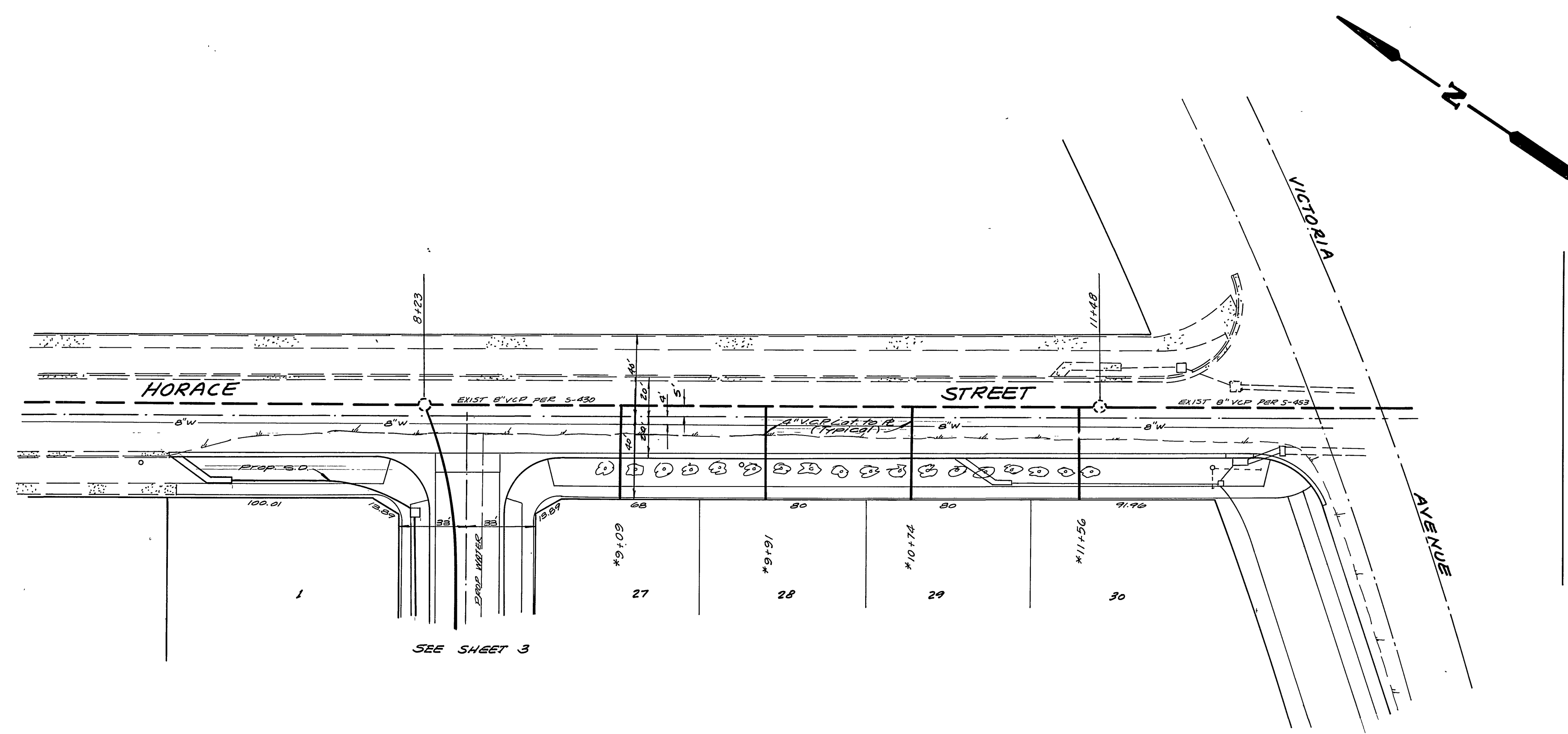
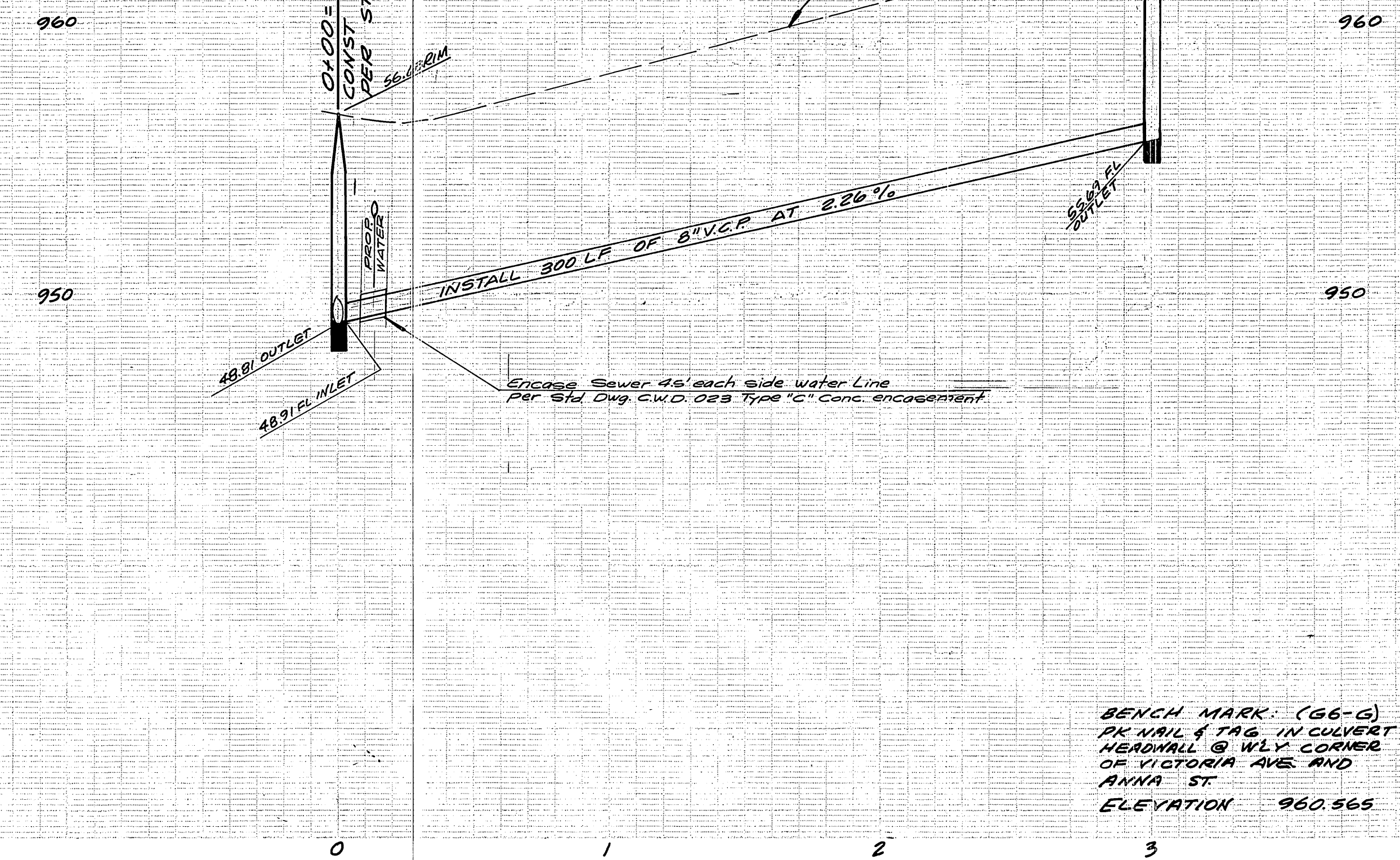
MARK	REVISIONS	APPR. DATE

CITY OF RIVERSIDE, CALIFORNIA
 PUBLIC WORKS DEPARTMENT
 APPROVED BY: *[Signature]* DATE 1-26-77
 PRINCIPAL ENGINEER
 PARK DEPARTMENT
 TRAFFIC DIVISION
 CHIEF PUB. WKS. ENGR.

SEWER PLAN
 TRACT 6466-1
 INDEX
 SCALE: 1"=50'

ACCOUNT No.
 DRAWING NUMBER
 S-1058
 SHEET 1 OF 3
 75-101-B

*AS BUILT 3-77 KBT
 BENCH MARK
 (30'-0") DE MARK 8 TAG 111 CULVERT
 250' W. OF 100' CORNER OF VICTORIA
 AVE. & ANNE ST. ELEV. 960.585



NOTE: FOR GENERAL AND CONSTRUCTION NOTES SEE SHEET NO. 1

Approved By: *Wesley J. Allen*
 Chief Utilities Engineer, Water Date: 11-29-76

ALBERT A. WEBB ASSOCIATES
 CIVIL ENGINEERS
 RIVERSIDE, CALIFORNIA
 APPROVED BY: *Robert J. Engate* DATE 8-26-75
 R.E. No. 21884

MARK	REVISIONS	APPR.	DATE

CITY OF RIVERSIDE, CALIFORNIA
 PUBLIC WORKS DEPARTMENT
 APPROVED BY: *Wesley J. Allen* DATE 11-29-76
 PRINCIPAL ENGINEER
 PARK DEPARTMENT
 TRAFFIC DIVISION
 CHIEF PUB. WKS. ENGR. DATE 11-29-76

SEWER PLAN AND PROFILE
 LEXINGTON PLACE
 AND
 HORACE STREET
 TRACT 6466-1
 SCALE: HORIZ 1"=40' VERT 1"=4'

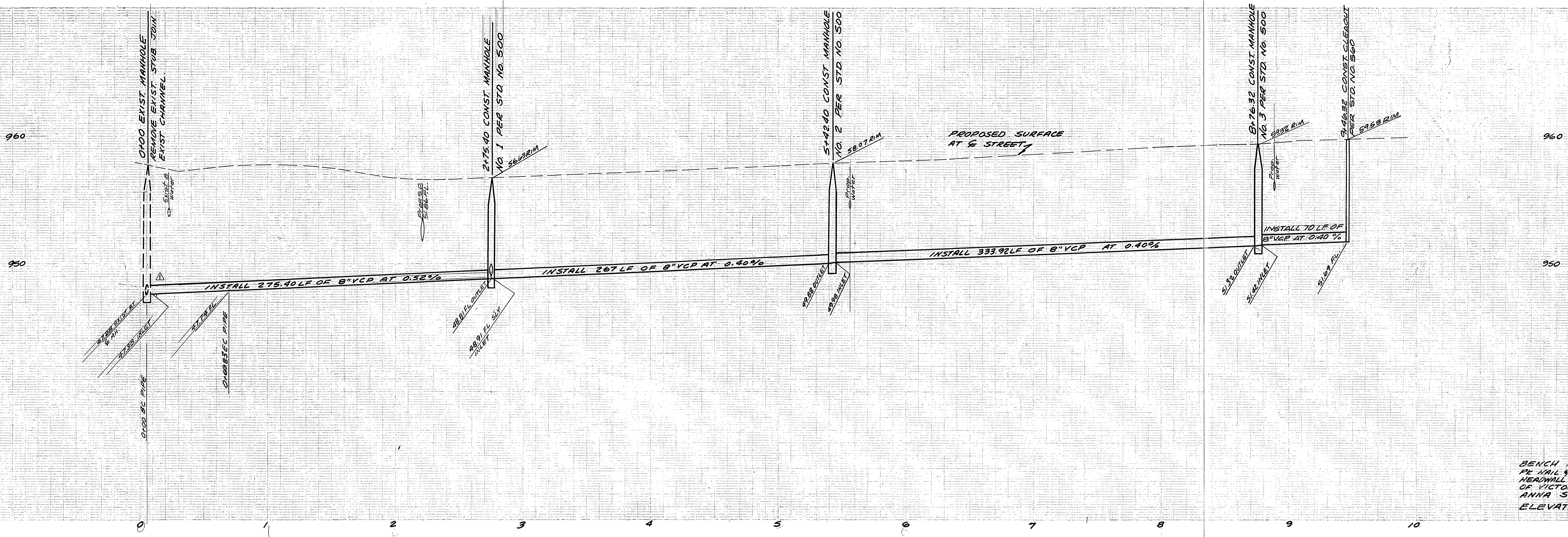
ACCOUNT No.
 DRAWING NUMBER
 S-1058
 SHEET 2 OF 3
 75-101-B

W.D. 75-101 FOR DR. M.H. MAC ARTHUR F.B. 1037

DESIGNED BY: L.L.L. DRAWN BY: B.E. CHECKED BY: [Signature]

DATE 1-16-77

*AS BUILT 3.77 KFT



BENCH MARK (56-B)
 1/2" DIA. 5" DIA. IN CONCRETE
 HEADWALL @ WLY CORNER
 OF VICTORIA AVE. AND
 ANNA ST.
 ELEVATION 960.565

SEE SHEET 2

SEE SHEET 2

SEE RIGHT

SEE LEFT

0100 BC PIPE EXIST. MANHOLE
 REMOVE EXIST. STUB RE-CHANNEL
 MH TO MEET EXIST. CHANNEL

INSTALL 275.40 LF OF 8" VCP
 NO. 1 PER STD. 500

INSTALL 267 LF OF 8" VCP
 NO. 1 PER STD. 500

INSTALL 275.40 LF OF 8" VCP
 NO. 2 PER STD. 500

INSTALL 333.92 LF OF 8" VCP
 NO. 3 PER STD. 500

INSTALL 70 LF OF 8" VCP
 CLEANOUT
 PER STD. NO. 560

PIPE CURVE DATA				
No.	Δ	R	L	T
①	20°00'26"	200	68.83	36.38

NOTE: FOR GENERAL AND CONSTRUCTION
 NOTES SEE SHEET NO. 1

Approved By: *M. J. Allen*
 Chief Utilities Engineer, Water Dept
 11-23-76

ALBERT A. WEBB ASSOCIATES
 CIVIL ENGINEERS
 RIVERSIDE, CALIFORNIA
 APPROVED BY: *Albert A. Webb* DATE 8-26-75
 R.E. No. 21884
 W.D. 75-101 FOR: DR. M.H. MAC ARTHUR F.B. 1037

DESIGNED BY: LDC DRAWN BY: BE CHECKED BY: [Signature]

CITY OF RIVERSIDE, CALIFORNIA
 PUBLIC WORKS DEPARTMENT
 APPROVED BY: *[Signature]* DATE 1-16-77
 PARK DEPARTMENT
 TRAFFIC DIVISION
 CHIEF PUB. WKS. ENGR. DATE 1-16-77

SEWER PLAN AND PROFILE
 FOSTER DRIVE
 BETWEEN
 HORACE ST. AND TRACT BOUNDARY
 TRACT 6466-1
 SCALE: HORIZ 1"=40', VERT 1"=4'

ACCOUNT No.
 DRAWING NUMBER
 S-1058
 SHEET 3 OF 3
 75-101-B