
  
**RIVERSIDE CITY OF RIVERSIDE CALIFORNIA**

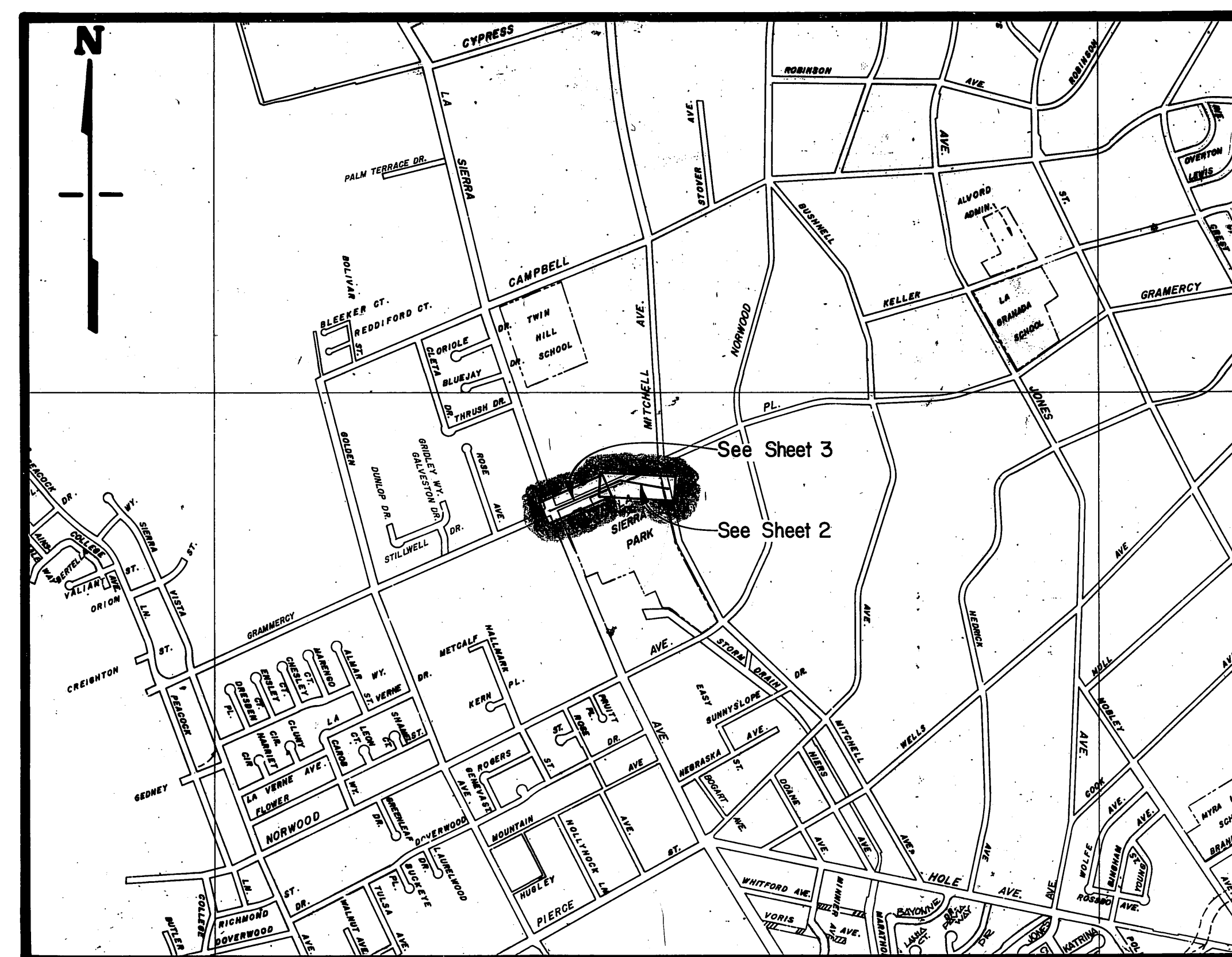
**PUBLIC WORKS DEPARTMENT**

**GRAMERCY RELIEF**

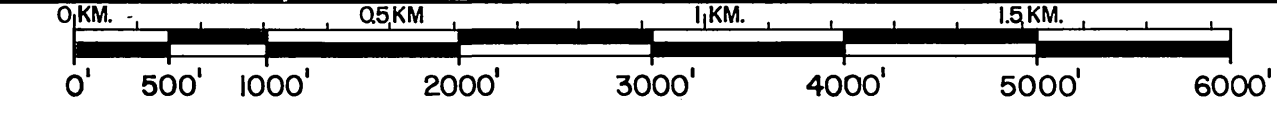
**SEWER**

**From Mitchell to La Sierra**

**PROJECT LENGTH: 1143 L.F.**



**PROJECT LOCATION PLAN**



SCALE 1" = 1000'

**CONSTRUCTION LEGEND**

CENTER LINE	— C —	TOP OF SLOPE	— T —
RIGHT-OF-WAY LINE	— R/W —	TOE OF SLOPE	— E —
SUBDIVISION LOT LINE	— S —	DIRECTION OF FLOW	—>—

**EXISTING UNDERGROUND & TOPOGRAPHY LEGEND**

<b>EXISTING UNDERGROUND UTILITIES:</b>			
SANITARY SEWER	— 8" S —	TELEPHONE CONDUIT	— T —
WATER LINE	— 6" W —	ELECTRICAL CONDUIT	— E —
STORM DRAIN	— 24" D —	STREET LIGHTING	— SL —
GAS LINE	— 3" G —	TRAFFIC SIGNAL	— SIG —
IRRIGATION LINE	— 20" IRR —	FIRE ALARM	— F —

<b>EXISTING TOPOGRAPHY:</b>			
—	BLOCK WALL	— T —	TOP OF SLOPE
—	BOARD FENCE	— E —	TOE OF SLOPE
—	WIRE FENCE	—>—	DIRECTION OF FLOW
—	CHAIN LINK FENCE		

**SPECIFIC CONSTRUCTION NOTES**

- NUMBERS ABOVE 100 IN A HEXAGON ON THE PLAN REFER TO THE RESPECTIVE STANDARD DRAWING AND SHALL BE CONSTRUCTED ACCORDINGLY, UNLESS MODIFICATIONS ARE NOTED ON THE PLAN OR COVER SHEET BELOW. ANY NUMBER SHOWN BELOW THE STANDARD DRAWING NUMBER INDICATES THE SPECIFIC ALTERNATE TO BE CONSTRUCTED.

**GENERAL CONSTRUCTION NOTES**

1. CONTRACTOR SHALL RESTORE AT HIS OWN EXPENSE ANY CURBS AND GUTTERS, PIPE LINES, OR OTHER IMPROVEMENTS DAMAGED BY CONSTRUCTION, EXCEPT THAT CULVERTS ON THE NORTH SIDE OF GRAMERCY MAYBE REMOVED.
2. AN EFFORT HAS BEEN MADE BY THE CITY TO DETERMINE LOCATIONS OF SEWER LATERALS. THE CONTRACTOR SHALL CONNECT ALL INTERCEPTED SEWER LATERALS PER STD. DWG. 562, MODIFIED AS NECESSARY DUE TO LATERAL ELEVATIONS.
3. EXISTING UTILITIES ARE PLOTTED FROM UTILITY RECORDS AND OTHER DATA AS SHOWN. THE CONTRACTOR IS REQUIRED TO TAKE DUE PRECAUTIONARY MEASURES TO LOCATE AND PROTECT ALL UTILITIES WHETHER OR NOT SHOWN ON THIS PLAN. IF THE COVER OF A UTILITY IS KNOWN IT IS GIVEN IN THE PROFILE, A QUESTION MARK ( ? ) INDICATES THAT COVER IS UNKNOWN, BUT THE UTILITY IS NOT EXPECTED TO CONFLICT WITH CONSTRUCTION.
4. ENCASMENT AT WATER LINES SHALL BE PER WATER DIVISION ENGINEERING DWG. CWD-023. TYPE "B" OR TYPE "C" AS SHOWN ON THE PLAN OR PROFILE.

<ul style="list-style-type: none"> <li>① SANITARY SEWER MH.</li> <li>② SANITARY SEWER CLEANOUT</li> <li>③ STORM DRAIN MH.</li> <li>④ IRRIGATION WEIR</li> <li>⑤ WATER M.H.</li> <li>⑥ GAS M.H.</li> <li>⑦ ELECTRIC M.H.</li> <li>⑧ TELEPHONE M.H. OR VAULT</li> <li>⑨ WATER METER</li> <li>⑩ FIRE HYDRANT</li> <li>⑪ SPRINKLER HEAD</li> <li>⑫ VALVE</li> <li>⑬ AIR VALVE</li> <li>⑭ AIR VENT</li> </ul>	<ul style="list-style-type: none"> <li>⑮ POLE &amp; GUY ANCHOR</li> <li>⑯ ELECTRIC POLE</li> <li>⑰ TELEPHONE POLE</li> <li>⑱ JOINT USE POLE</li> <li>⑲ PULL BOX</li> <li>⊥ TRAFFIC SIGN</li> <li>⊥ PARKING METER</li> <li>⊥ FIRE ALARM BOX</li> <li>⊥ STREET NAME SIGN</li> <li>⊥ GAS METER</li> <li>⊥ MAIL BOX</li> <li>⊥ FAUCET</li> <li>⊥ TELEPHONE RISER</li> <li>⊥ WHEEL STOP</li> <li>⊥ A.C. BERM</li> <li>⊥ STEEL POST</li> <li>⊥ WOOD POST</li> </ul>	<ul style="list-style-type: none"> <li>⑳ PEDESTRIAN PUSH BUTTON</li> <li>㉑ RAILROAD TRACKS</li> <li>㉒ RAILROAD SIGN</li> <li>㉓ RAILROAD SIGNAL</li> <li>㉔ STREET LIGHT &amp; TRAFFIC SIGNAL ON MAST ARM</li> <li>㉕ STREET LIGHT (UPRIGHT)</li> <li>㉖ STREET LIGHT</li> <li>㉗ TRAFFIC SIGNAL</li> <li>㉘ TRAFFIC SIGNAL ON MAST ARM</li> <li>㉙ TRAFFIC SIGNAL CONTROLLER</li> <li>㉚ TRAFFIC SIGNAL PRESSURE DETECTOR</li> <li>㉛ TRAFFIC SIGNAL LOOP DETECTOR</li> <li>㉜ CITRUS TREE</li> <li>㉝ DECIDUOUS TREE</li> <li>㉞ PALM TREE</li> <li>㉟ SHRUBBERY</li> <li>㊱ TREE STUMP</li> </ul>
--	---	--

—	CONCRETE
—	ASPHALT
—	EDGE OF PAVEMENT
—	BUILDING
—	UNDERGROUND STRUCTURE
—	OVERHANGING STRUCTURE

**-CAUTION-**  
**PACIFIC TELEPHONE**  
**CABLES UNDERGROUND**  
**BEFORE EXCAVATING**

CALL COLLECT: 7:30 A.M. to 5 P.M. & Holidays  
 After Hours

Orange County	714-633-0811	714-547-6505
Riverside County	714-684-0071	714-547-6505
Inyo County	714-684-0071	714-547-6505
San Bernardino County	714-684-0071	714-547-6505
Los Angeles County	213-621-3111	24 HOUR SERVICE
Ventura County	213-621-3111	SERVICE
San Diego County	714-298-0595	714-232-0027

FOR FREE CABLE LOCATING SERVICE

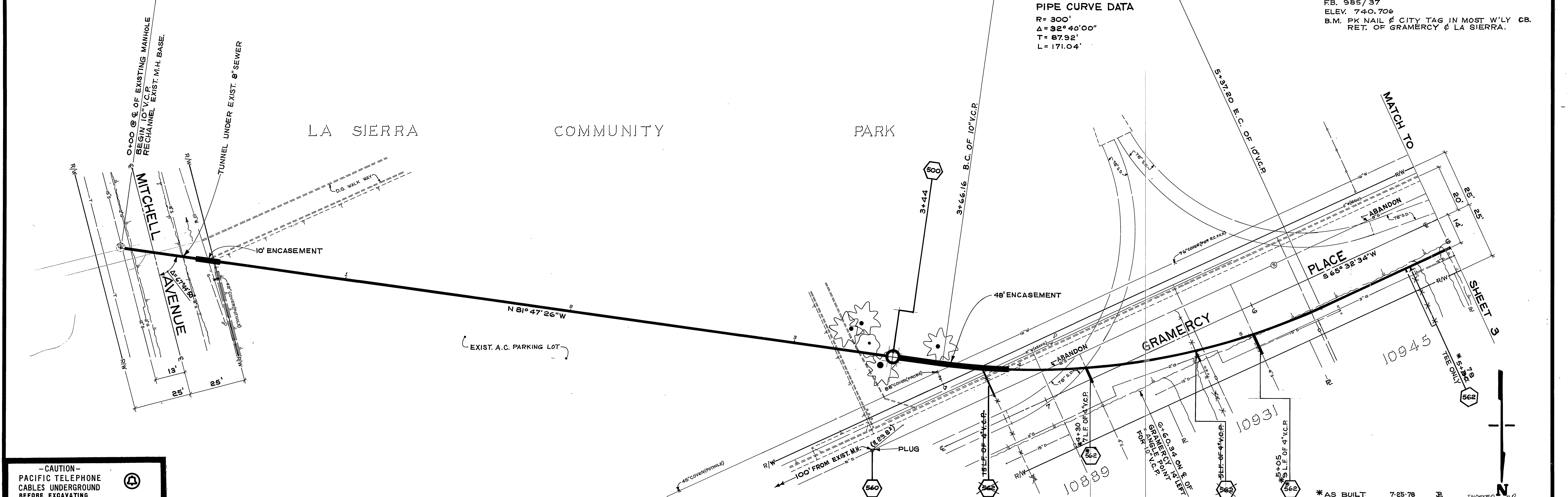
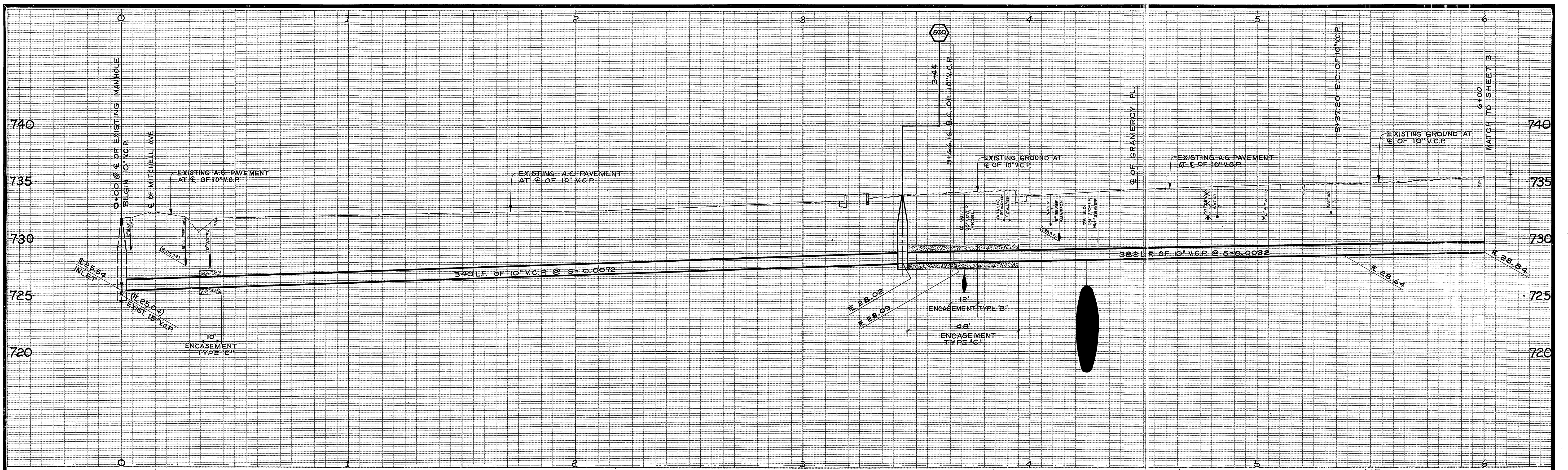
**CITY OF RIVERSIDE**  
**PUBLIC WORKS DEPARTMENT**

APPROVED BY:	DATE:	APPROVED BY:	DATE:
PRINCIPAL ENGINEER	9-28-77	CHIEF P.W. ENGINEER	11-10
PARK DEPARTMENT		SEWAGE DIVISION	8-7-77
TRAFFIC DIVISION			

**GRAMERCY RELIEF**  
**SEWER**  
 From Mitchell to La Sierra

ACCOUNT No. 32-577-576-00  
 DRAWING NUMBER  
**S-1059**  
 SHEET 1 OF 3





PIPE CURVE DATA  
 R = 300'  
 Δ = 32° 40' 00"  
 T = 87.92'  
 L = 171.04'

FB. 985/37  
 ELEV. 740.706  
 B.M. PK NAIL & CITY TAG IN MOST W'LY CB.  
 RET. OF GRAMERCY & LA SIERRA.

**-CAUTION-**  
 PACIFIC TELEPHONE  
 CABLES UNDERGROUND  
 BEFORE EXCAVATING.  
 CALL COLLECT:  
 7:30 A.M. to 5 P.M. & Holidays  
 Orange County 714-633-0811 714-547-6606  
 Riverside County 714-684-0071 714-547-6606  
 Inyo County 714-884-0071 714-547-6606  
 San Bernardino County 714-684-0071 714-547-6606  
 Los Angeles County 213-621-3111  
 Ventura County 213-621-3111  
 San Diego County 714-238-0595 714-232-0027  
**24 HOUR SERVICE**  
 FOR FREE CABLE LOCATING SERVICE

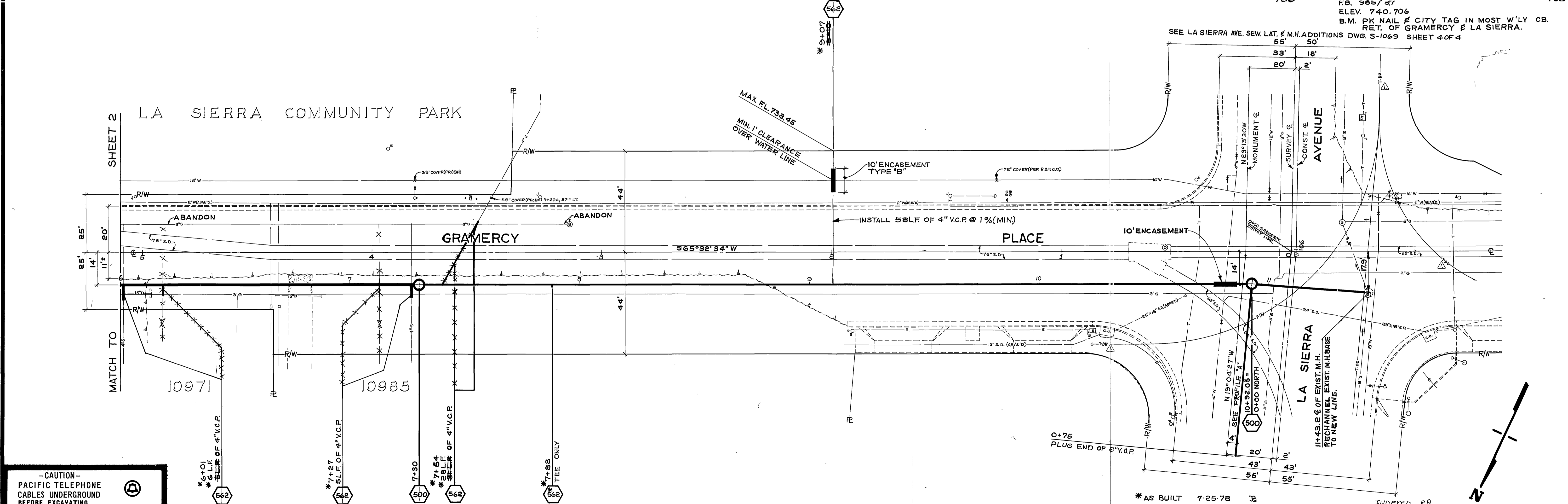
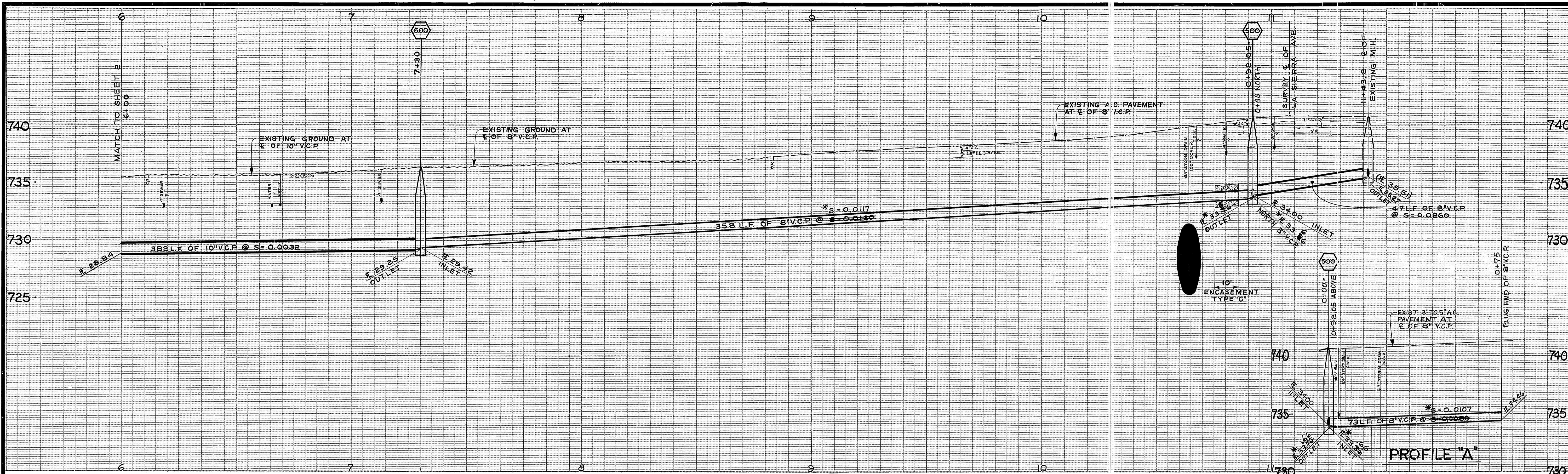
CITY OF RIVERSIDE DOMESTIC SYSTEM  
 Chief Utilities Engineer, Water  
 DATE 9-28-77

CITY OF RIVERSIDE  
 PUBLIC WORKS DEPARTMENT  
 APPROVED BY: [Signature]  
 PRINCIPAL ENGINEER DATE 11-10  
 PARK DEPARTMENT DATE 8-18  
 TRAFFIC DIVISION DATE 11-10  
 CHIEF P.W. ENGINEER DATE 11-10  
 DESIGNED BY: [Signature] DRAWN BY: [Signature] CHECKED BY: [Signature] DATE 8-18-77

GRAMERCY RELIEF  
 SEWER  
 From Mitchell to La Sierra  
 HORIZ. SCALE: 1" = 20'  
 VERT. SCALE: 1" = 4'

ACCOUNT NO. 32-577-576-00  
 S-1059  
 SHEET 2 OF 3  
 FILE NO.





**CAUTION -**  
**PACIFIC TELEPHONE**  
**CABLES UNDERGROUND**  
**BEFORE EXCAVATING**  
**CALL COLLECT!**

After Hours & Holidays  
 7:30 A.M. to 5 P.M.  
 Orange County 714-633-0811 714-547-6606  
 Riverside County 714-684-0071 714-547-6606  
 Inyo County 714-884-0071 714-547-6606  
 San Bernardino County 714-884-0071 714-547-6606  
 Los Angeles County 213-621-3111 24 HOUR SERVICE  
 Ventura County 213-621-3111  
 San Diego County 714-298-0595 714-232-0027

FOR FREE CABLE LOCATING SERVICE

CITY OF RIVERSIDE DOMESTIC SYSTEM  
 Chief Utilities Engineer, Water  
 Date: 7-28-77

MARK	REVISIONS	APPR. DATE
▲	ADDED TELEPHONE DUCTS	7/16

**CITY OF RIVERSIDE**  
**PUBLIC WORKS DEPARTMENT**

APPROVED BY: [Signature]  
 DATE: 11/9  
 PRINCIPAL ENGINEER  
 PARK DEPARTMENT  
 TRAFFIC DIVISION  
 CHIEF P.W. ENGINEER  
 DATE: 11-10-77

**GRAMERCY RELIEF SEWER**  
 From Mitchell to La Sierra

HORIZ. SCALE: 1" = 20'  
 VERT. SCALE: 1" = 4'

ACCOUNT NO. 32-577576-00  
**S-1059**  
 SHEET 3 OF 3