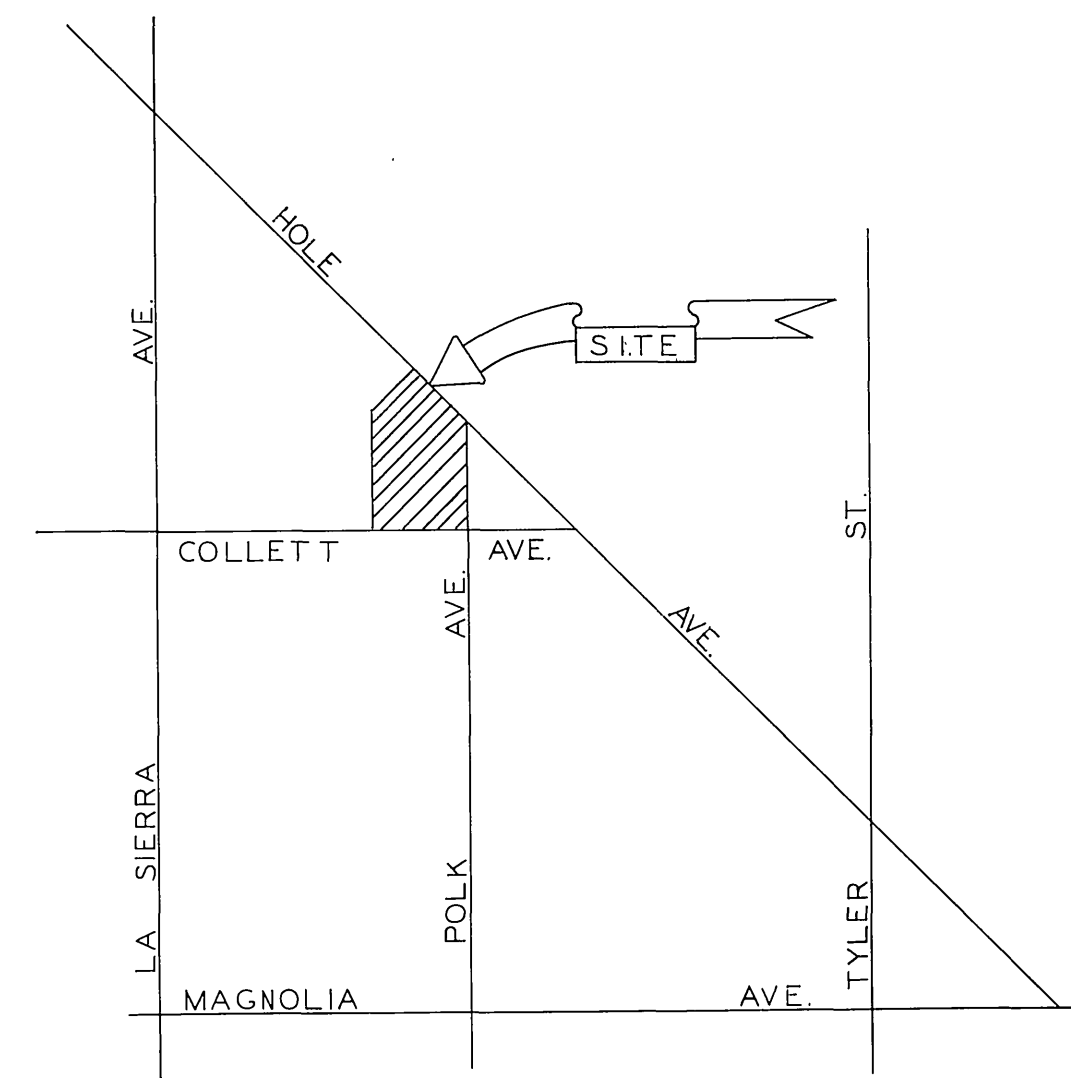


INDEX MAP
SCALE 1"=100'



LOCATION MAP
NO SCALE

GENERAL NOTES

1. Construction shall be in accordance with the Standard Specifications for Public Works construction, 1976 Edition, and City of Riverside Standard Drawings.
2. It shall be the responsibility of the Contractor to clear the right of way in accordance with the provisions of the law as it affects each utility including irrigation lines and appurtenances and at no cost to the City.
3. Pipe shall be bedded per Case I, standard Drawing No. 452, unless otherwise specified on plans.
4. Location of Wyes and laterals to be determined at the direction of the owner, except where Wyes exist, see sheets C, 4 & 6.
5. All stubs and laterals to be constructed in accordance with standard Drawing No. 562 stubs shall be plugged and capped.
6. Manhole frames and covers to be set as noted in profile by Sewer Contractor after final paving of street.
7. Laterals are to be 4" V.C.R. and extended to the property line.
8. Prior to construction of sewer, contractor is to expose existing sewer and contact the Engineer for verification of existing elevation.
9. All Manholes to be constructed per Standard No. 500.
10. A Plug shall be installed and will remain in place where the new sewer connects with the existing Sewer until the new sewer is accepted by the City.

NOTICE TO CONTRACTOR:

The existence and location of underground utility pipes or structures shown on these plans are obtained by a search of the available records. To the best of our knowledge, there are no existing utilities except as shown on these plans.
The Contractor is required to take due precautionary measures to protect the utility lines shown and any other lines not of record or not shown on these plan

BENCH MARK:

No. F2-E P.K. Nail in N.W. Curb Return
@ La Sierra Avenue and Pierce Street
per City of Riverside F.B. 838/1
ELEV. 744.416

APPROVED BY: *W. A. Shylen* 11-15-76
CHIEF UTILITIES ENGINEER, WATER DATE

ALBERT A. WEBB ASSOCIATES
CIVIL ENGINEERS
RIVERSIDE, CALIFORNIA
APPROVED BY: *L. A. Wainwright* DATE 9-25-76
R.E. No. 16056

MARK REVISIONS APPR. DATE

CITY OF RIVERSIDE, CALIFORNIA
PUBLIC WORKS DEPARTMENT
APPROVED BY: *[Signature]* DATE 12-9-76
PRINCIPAL ENGINEER
TRAFFIC DIVISION
CHIEF PUB. WKS. ENGR. DATE 12-9-76

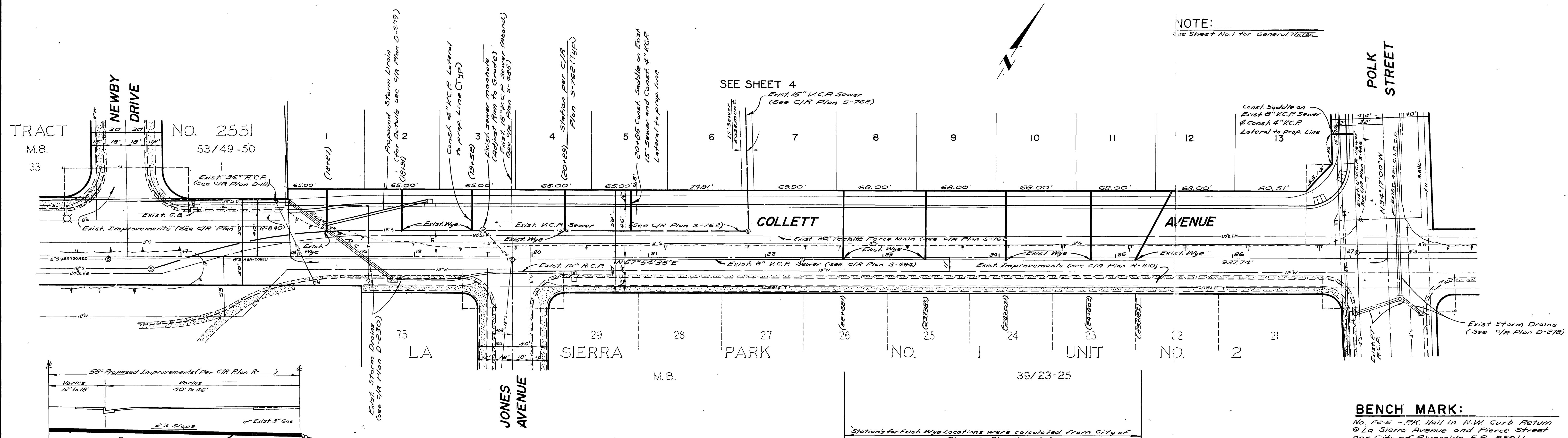
SEWER PLAN AND PROFILE
TRACT NO. 6992
INDEX MAP
SCALE: AS SHOWN

INDEXED E.T.
ACCOUNT No.
DRAWING NUMBER
5-1062
SHEET 1 OF 6
76-85-B

W.O. 76-85 FOR: Hollenbeck Dev. Co. F.B. 1039

DESIGNED BY: P.M. DRAWN BY: P.H. JR. CHECKED BY: B.M.

DATE 12-9-76



NOTE:
See Sheet No. 1 for General Notes.

TRACT NO. 2551
M.B. 53/49-50

SEE SHEET 4
Exist. 15" V.C.P. Sewer
(See C/R Plan 5-762)

POLK STREET

COLLETT AVENUE

LA SIERRA

PARK

NO. 1

UNIT NO. 2

JONES AVENUE

BENCH MARK:
No. F2-E - PK. No. 1 in N.W. Curb Return
@ La Sierra Avenue and Pierce Street
per City of Riverside F.B. 838/1
ELEV. 714.416

Stations for Exist. Wye Locations were calculated from City of Riverside Plan No. 5-636

TYPICAL SECTION - COLLETT AVENUE
LATERAL INSTALLATION
Sta. 22168 to Sta. 25118 ±
NO SCALE

TYPICAL SECTION - POLK STREET
LATERAL INSTALLATION
Sta. 1108 ±
NO SCALE

ALBERT A. WEBB ASSOCIATES
CIVIL ENGINEERS
RIVERSIDE, CALIFORNIA
APPROVED BY *L.A. Mansueti* DATE 9-2-76
R.E. No. 16055
W.D. 76-85 FOR: Hallenbeck Dev. Co. F.B. 1039

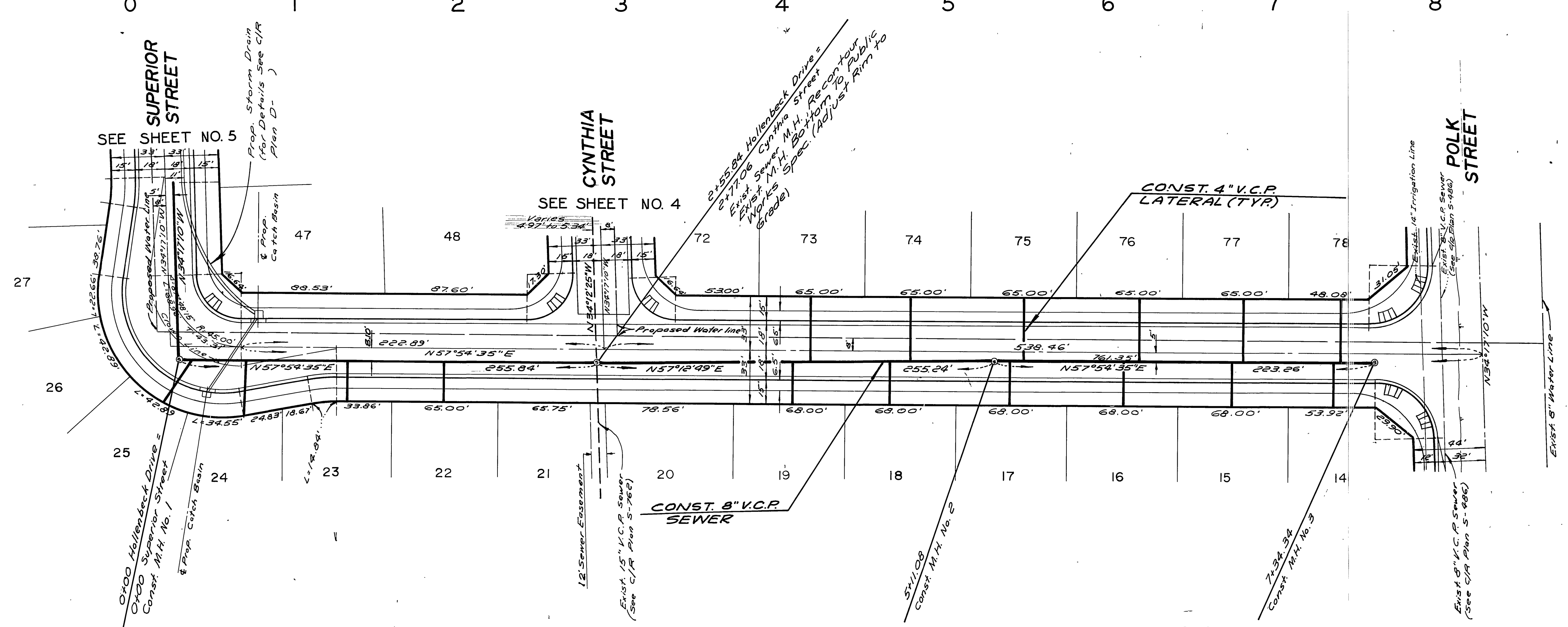
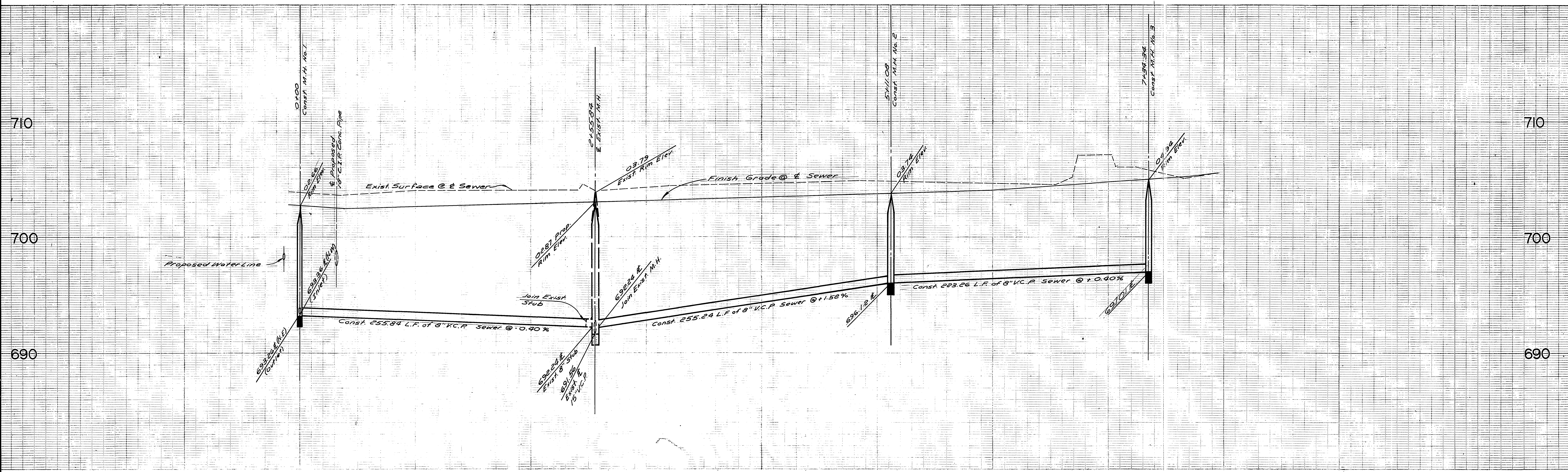
APPROVED BY:
Nancy Allen 11-15-76
CHIEF UTILITIES ENGINEER, WATER DATE

MARK	REVISIONS	APPR. DATE

CITY OF RIVERSIDE, CALIFORNIA
PUBLIC WORKS DEPARTMENT
APPROVED BY: *[Signature]* BY DATE: 12-9-76
PRINCIPAL ENGINEER
TRAFFIC DIVISION
CHIEF PUBLIC WORKS ENGINEER
DATE 12-9-76

SEWER PLAN AND PROFILE
TRACT NO. 6992
COLLETT AVENUE
SCALE: Horiz 1"=40' - Vert 1"=4'

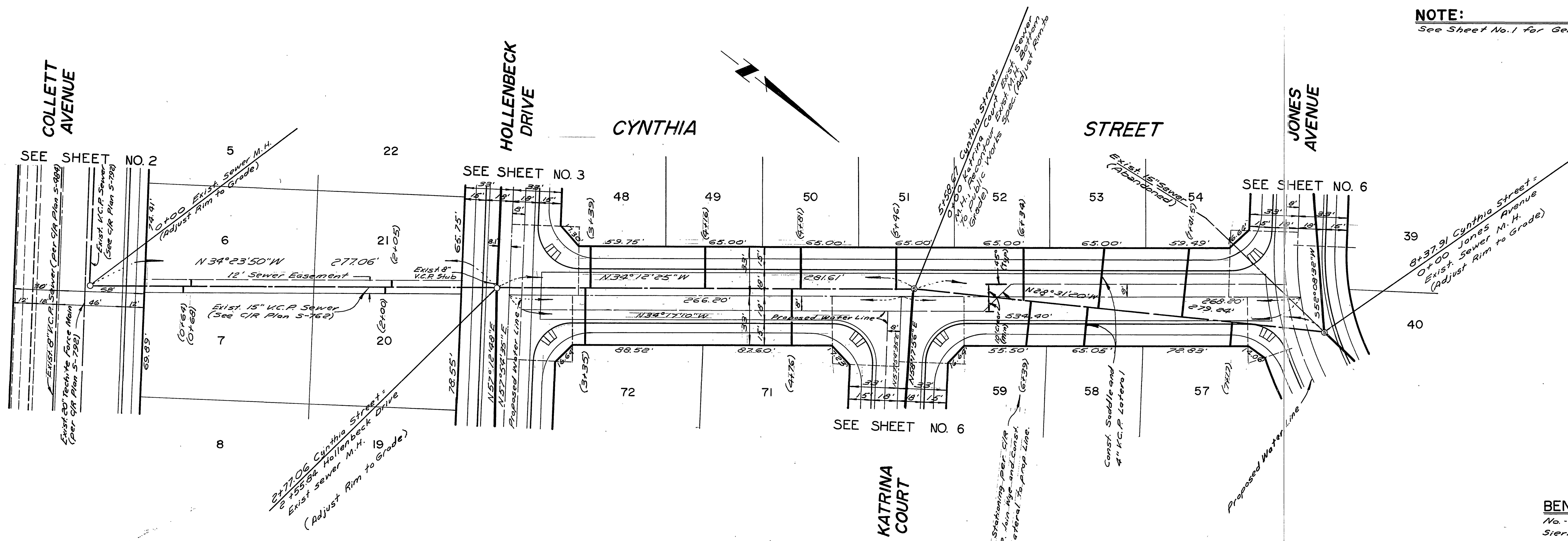
ACCOUNT No.
DRAWING NUMBER
S-1062
SHEET 2 OF 6
76-85-B



NOTE:
See Sheet No. 1 for General Notes

BENCH MARK
No. PB-E-PK' Nail N.W. Curb Return @ La Sierra Avenue and Pierce Street per City of Riverside P.B. 838/11 ELEV. 714.716

ALBERT A. WEBB ASSOCIATES CIVIL ENGINEERS RIVERSIDE, CALIFORNIA APPROVED BY: <i>L.A. Mansueti</i> DATE: 2-2-76 R.I.E. No. 16056	APPROVED BY: <i>Wesley Styler</i> 11-15-76 CHIEF UTILITIES ENGINEER, WATER DEPT.	CITY OF RIVERSIDE, CALIFORNIA PUBLIC WORKS DEPARTMENT	SEWER PLAN AND PROFILE TRACT NO. 6992 HOLLENBECK DRIVE	ACCOUNT No. DRAWING NUMBER S-1062 SHEET 3 OF 6 76-85-B
	W.O. 76-85 FOR: Hollenbeck Dev. Co. F.B. 1039 DESIGNED BY: P.H. DRAWN BY: P.H.J.R. CHECKED BY: B.D.M.	REVISIONS APPR. DATE	APPROVED BY: <i>[Signature]</i> DATE: 12-9-76 PRINCIPAL ENGINEER PARK DEPARTMENT TRAFFIC DIVISION CHIEF PUB.WKS. ENGR.	SCALE: Horiz 1" = 40' - Vert 1" = 4'



NOTE:
See Sheet No. 1 for General Notes

BENCH MARK:
No. F2-E - P.K. N.W. Curb Return @ La Sierra Avenue and Pierce Street per City of Riverside F.B. 938/1
ELEV. 714.416

ALBERT A. WEBB ASSOCIATES
CIVIL ENGINEERS
RIVERSIDE, CALIFORNIA
APPROVED BY: *S.O. Mansueti* DATE: 9-2-76
R.E. No. 16056

MARK	REVISIONS	APPR.	DATE

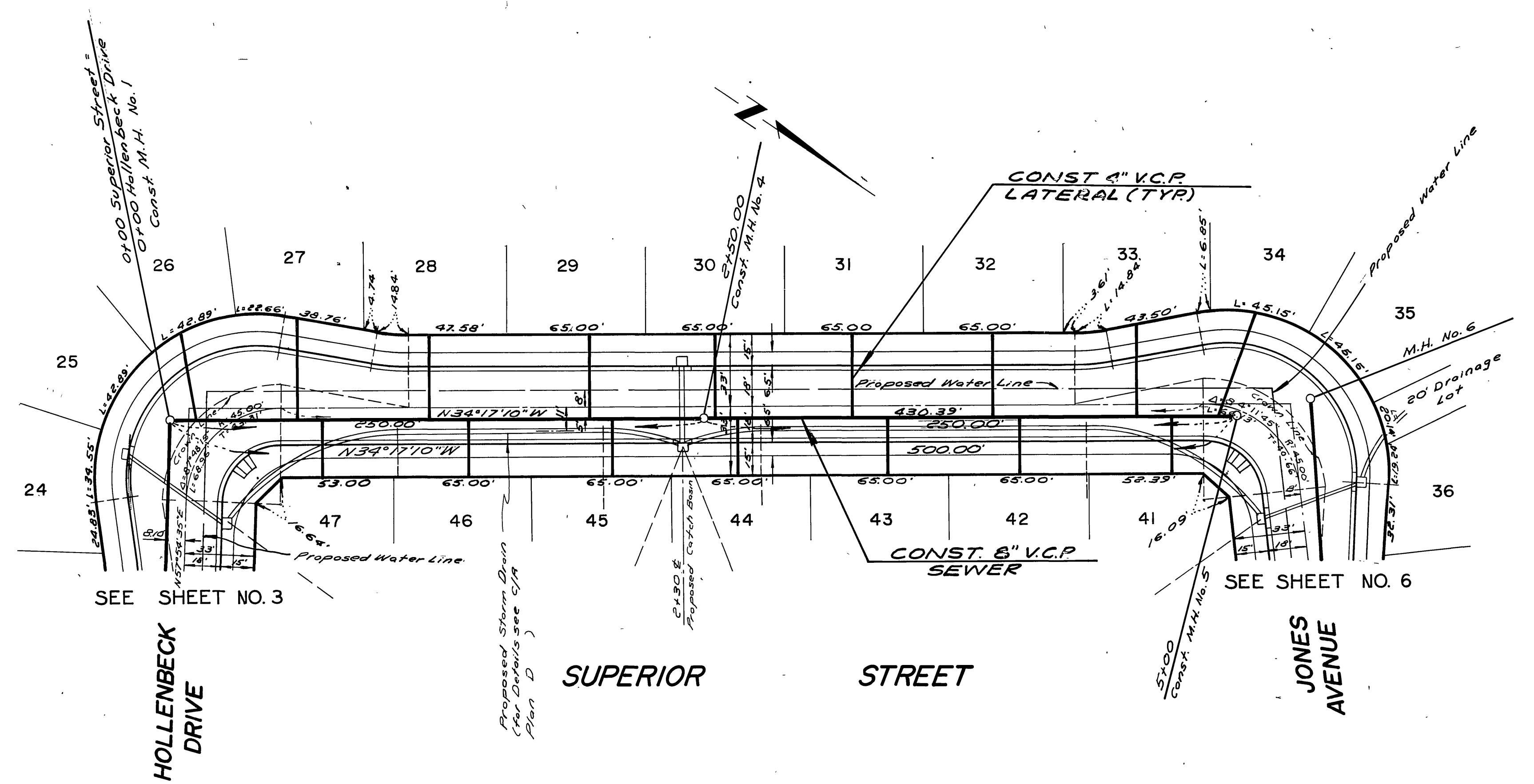
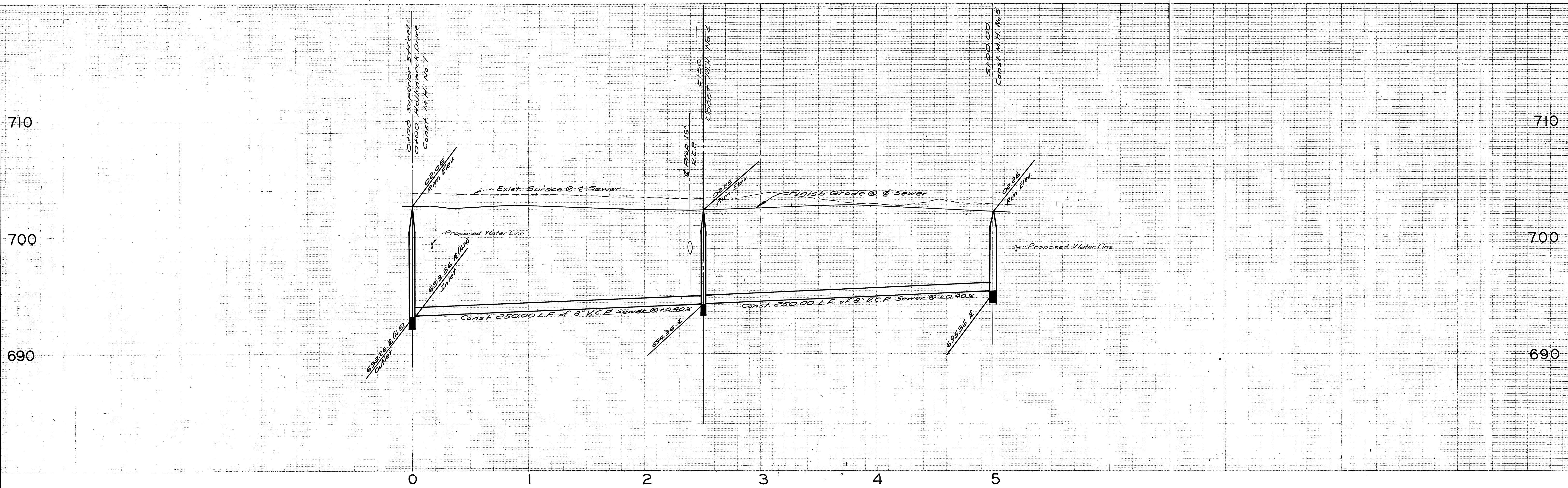
APPROVED BY: *Wesley Jordan* DATE: 11-15-76
CHIEF UTILITIES ENGINEER, WATER
CITY OF RIVERSIDE, CALIFORNIA
PUBLIC WORKS DEPARTMENT
APPROVED BY: *S.O. Mansueti* DATE: 11/23
PRINCIPAL ENGINEER
TRAFFIC DIVISION
CHIEF PUB. WKS. ENGR.
DATE: 12-9-76

SEWER PLAN AND PROFILE
TRACT NO. 6992
CYNTHIA STREET
SCALE: Horiz 1"=40' Vert 1"=4'

ACCOUNT No.
DRAWING NUMBER
S-1062
SHEET 4 OF 6
76-85-B

W.O. 76-85 FOR: Hollenbeck Dev Co F.B. 1039

DESIGNED BY: R.H. DRAWN BY: R.H. JR. CHECKED BY: R.H.



NOTE:
See Sheet No. 1 for General Notes

BENCH MARK
No. FB-5 - P.K. Nail in N.W. Curb Return @
La Sierra Avenue and Pierce Street per
City of Riverside F.B. 838/1 ELEV. 714.416

ALBERT A. WEBB ASSOCIATES
CIVIL ENGINEERS
RIVERSIDE, CALIFORNIA
APPROVED BY *L.R. Munnell* DATE 9-27-76
R.E. No. 16056
W.O. 76-85 FOR Hollenbeck Dev. Co. F.B. 1039

MARK	REVISIONS	APPR.	DATE

APPROVED BY:
Wesley Hylan 11-15-76
CHIEF UTILITIES ENGINEER, WATER DATE
APPROVED BY: *[Signature]* DATE 12-9-76
PRINCIPAL ENGINEER
PARK DEPARTMENT
TRAFFIC DIVISION
CHIEF PUB. WKS. ENGR.
DATE 12-9-76

SEWER PLAN AND PROFILE
TRACT NO. 6992
SUPERIOR STREET
SCALE: Horiz. 1"=40' Vert. 1"=4'

ACCOUNT No.
DRAWING NUMBER
S-1062
SHEET 5 OF 6
76-85-B

710

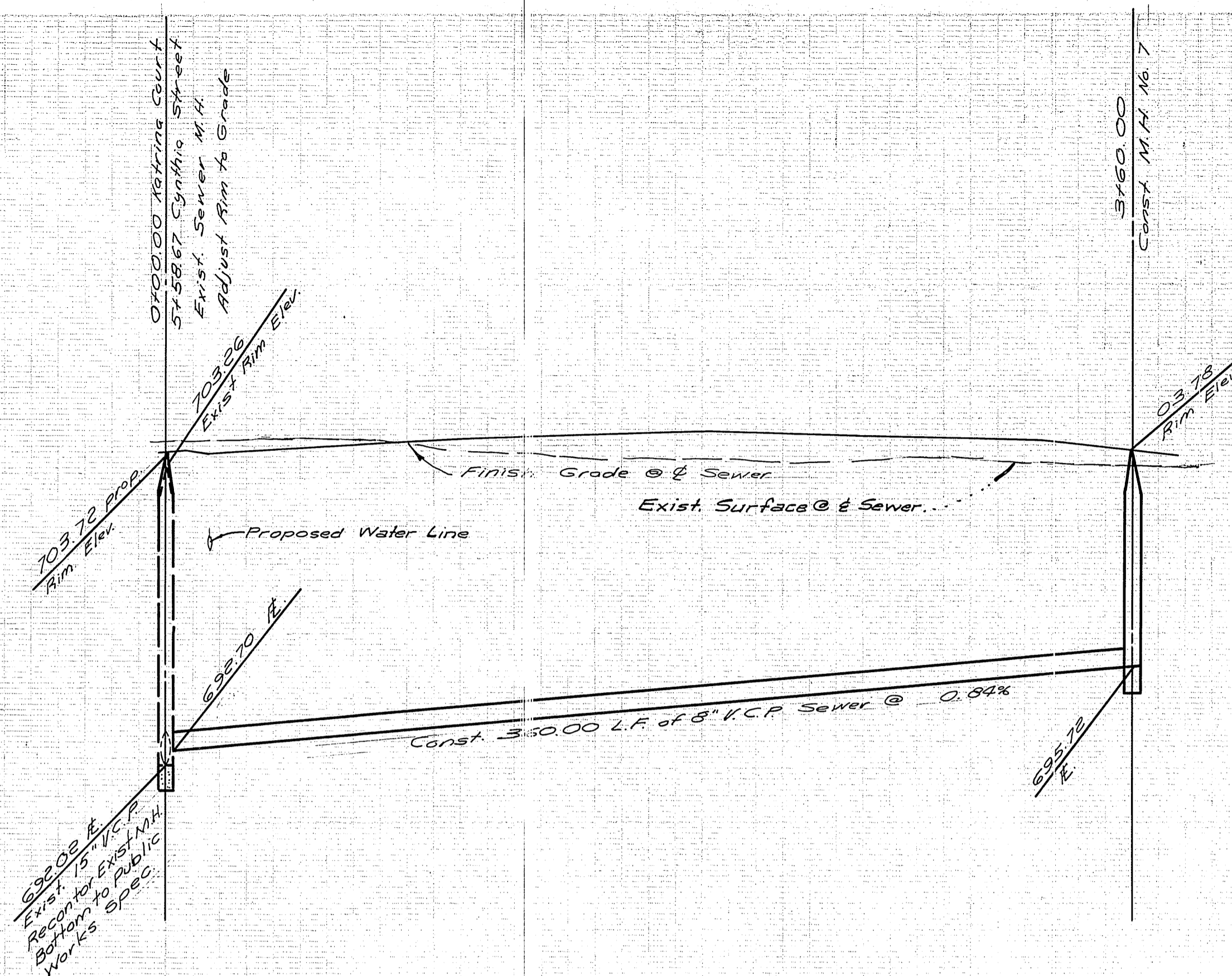
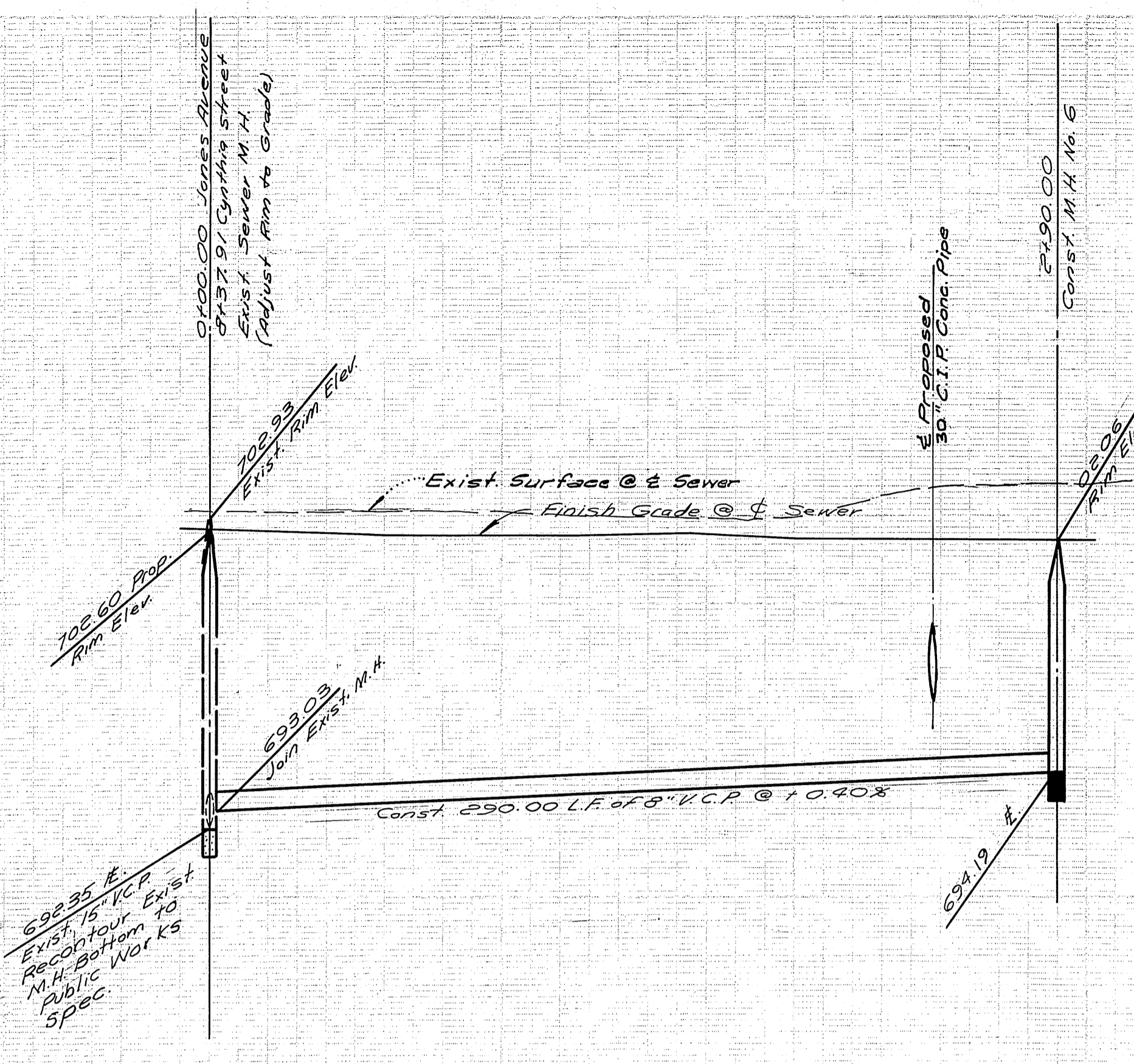
700

690

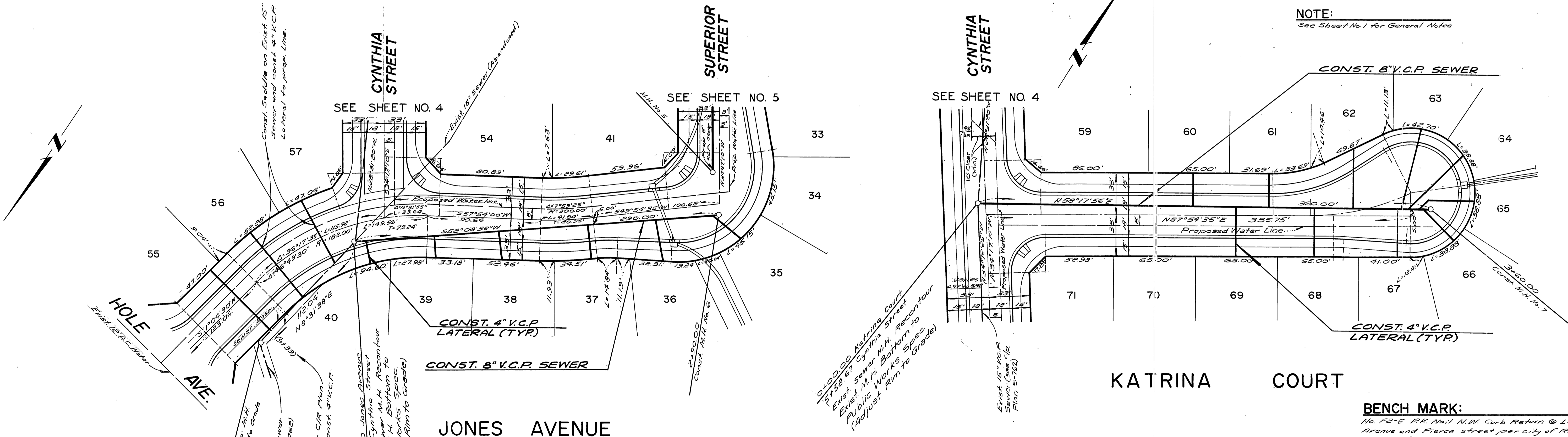
710

700

690



0 1 2 3 0 1 2 3 4



NOTE:
See Sheet No. 1 for General Notes

BENCH MARK:
No. P2-E P.K. No. 1 N.W. Curb Return @ La Sierra
Avenue and Pierce Street per City of Riverside
F.B. 839/1 ELEV. 714.416

ALBERT A. WEBB ASSOCIATES CIVIL ENGINEERS RIVERSIDE, CALIFORNIA APPROVED BY: <i>L.D. Wainwright</i> DATE: 2-2-76 R.E. No. 16056	DESIGNED BY: <i>R.H.</i> DRAWN BY: <i>R.H.</i> CHECKED BY: <i>BDM</i>	APPROVED BY: <i>Wesley J. Taylor</i> 11-15-76 CHIEF UTILITIES ENGINEER, WATER DATE	CITY OF RIVERSIDE, CALIFORNIA PUBLIC WORKS DEPARTMENT APPROVED BY: <i>Wesley J. Taylor</i> DATE: 11-15-76 PRINCIPAL ENGINEER PARK DEPARTMENT TRAFFIC DIVISION CHIEF PUB. WKS. ENGR. DATE: 12-9-76	SEWER PLAN AND PROFILE TRACT NO. 6992 JONES AVENUE KATRINA COURT	ACCOUNT No. DRAWING NUMBER S-1062
		SCALE: Horiz 1"=40' - Vert 1"=4'			SHEET 6 OF 6 76-85-B