

**NOTE:**  
FOR TYPICAL SECTION, GENERAL AND CONSTRUCTION NOTES, SEE SHEET 8304.

**IRRIGATION OWNER**  
Haley Saffa 12-22-76  
DATE

**WATER DEPARTMENT**  
Haley Saffa 12-22-76  
CHIEF UTILITIES ENGINEER, WATER DATE

**J. F. DAVIDSON ASSOCIATES**  
CIVIL ENGINEERS - SURVEYORS - PLANNERS  
RIVERSIDE, CALIFORNIA

APPROVED BY: *J. W. Canty* DATE 1/20/76  
R.E. No. 17550

W.O. 4938 FOR: KENT LAND CO. F.B. 1099

**REVISIONS**

MARK	REVISIONS	APPR.	DATE
Δ	DELETED CHIMNEYS; ADDED SEWERS		1/14/76
Δ	ADDED SHT "E" TO PLANS		1/14/76
Δ	REVISE SEWER PROFILE		1/17/76

DESIGNED BY: RSD DRAWN BY: RSD CHECKED BY: RSD

**CITY OF RIVERSIDE, CALIFORNIA**  
DEPARTMENT OF PUBLIC WORKS

APPROVED BY: *William D. Gardner*  
DIRECTOR OF PUBLIC WORKS

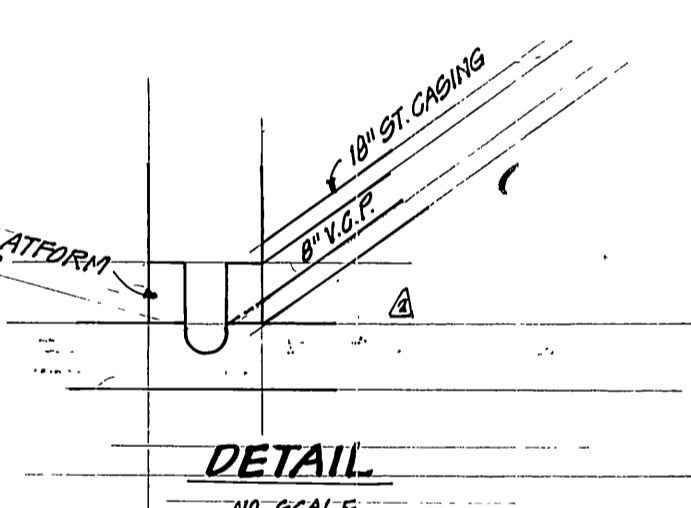
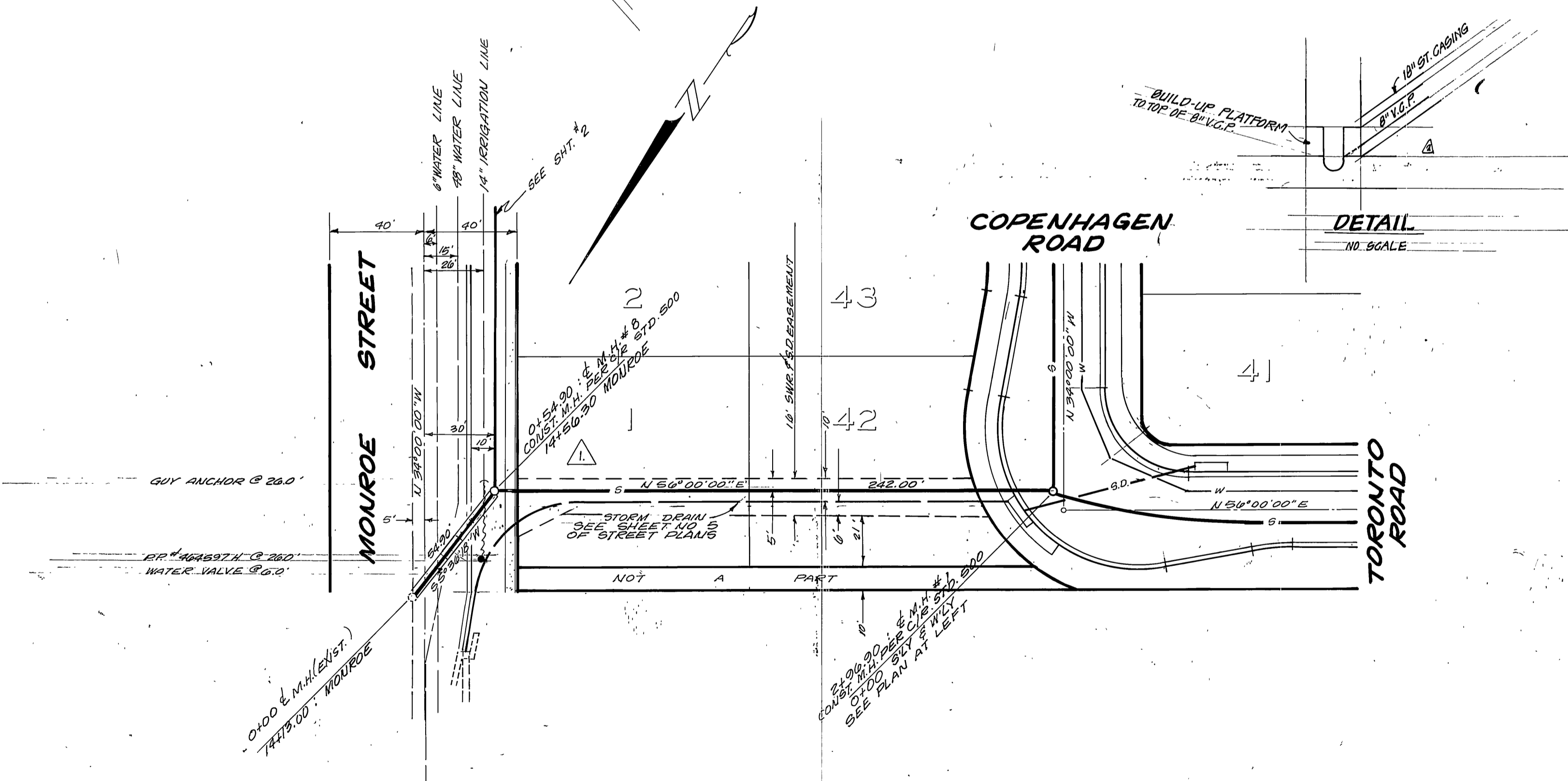
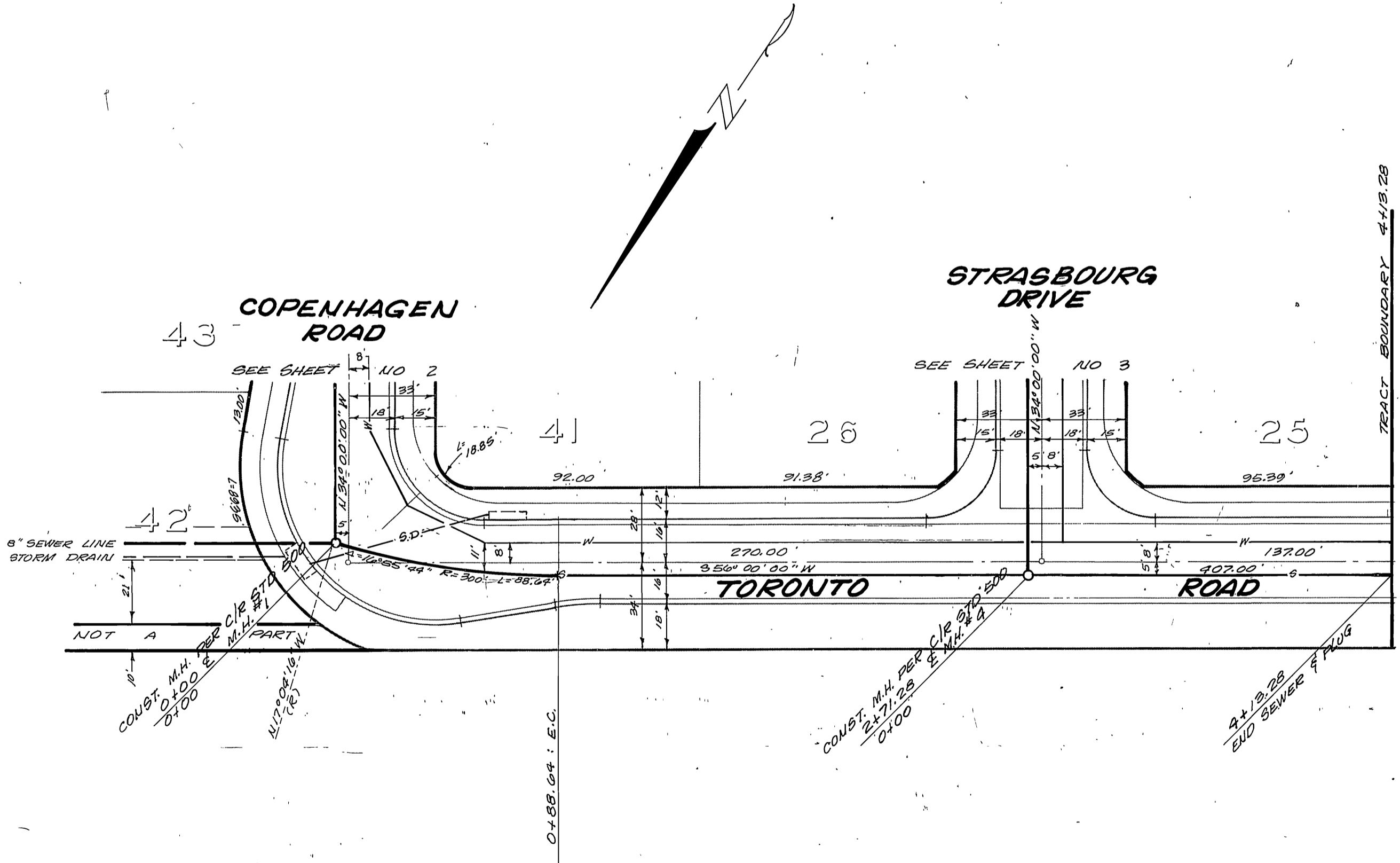
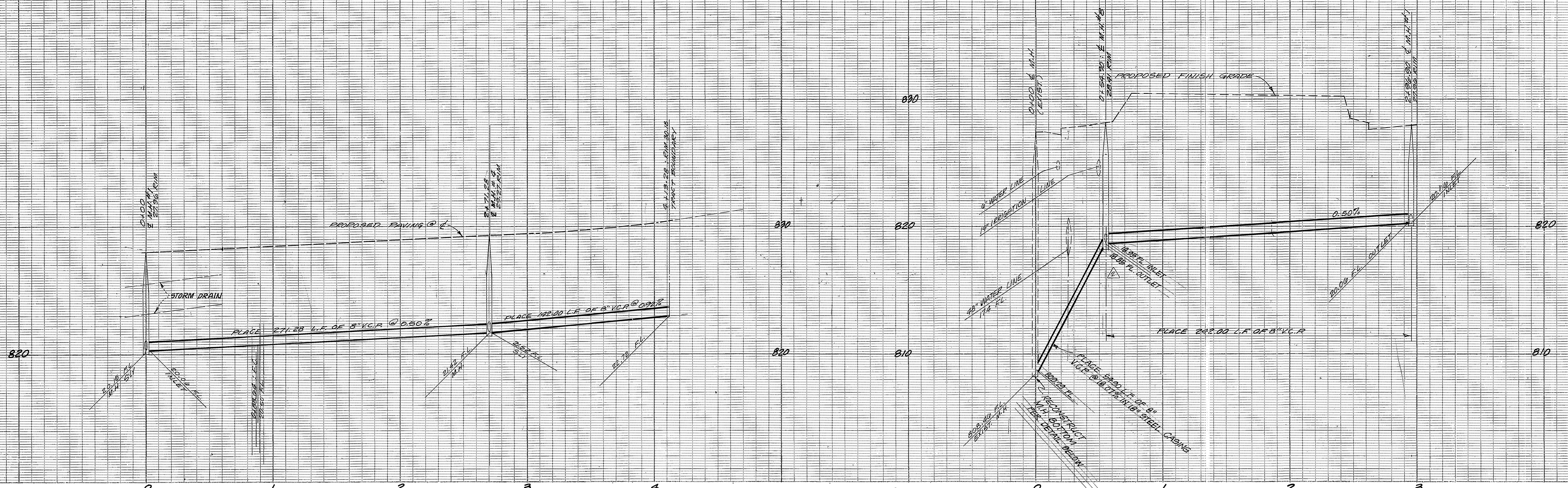
DATE 12/27/76

**SEWER PLAN & PROFILE**  
TRACT 7675-1  
**MONROE STREET**

HORIZ. SCALE: 1" = 40'  
VERT. SCALE: 1" = 8'

PROJECT NO. S-1063  
SHEET 2 OF 5  
FILE NO. 5501

**BENCH MARK:**  
CITY OF RIVERSIDE B.M. F.S.H.  
FOUND PK NAIL & TAG ON RIV.  
WATER CO. CANAL HEADWALL,  
W/L'SIDE MONROE STREET,  
C/R F.B. 839/33  
ELEV. = 345.00



BENCH MARK:  
 CITY OF RIVERSIDE B.M. F.54  
 FOUND IN NAIL AND TAG ON  
 RIVERSIDE WATER COMPANY  
 CANAL HEADWALL ON WLY SIDE  
 MONROE STREET  
 CITY OF RIVERSIDE FB. 839/93  
 ELEV. = 845.60

NOTE:  
 FOR TYPICAL SECTION, GENERAL  
 AND CONSTRUCTION NOTES SEE  
 SHEET NO. 1

APPROVED BY:  
*Walter J. Jahn*  
 CHIEF UTILITIES ENGINEER, WATER  
 DATE 11-18-76

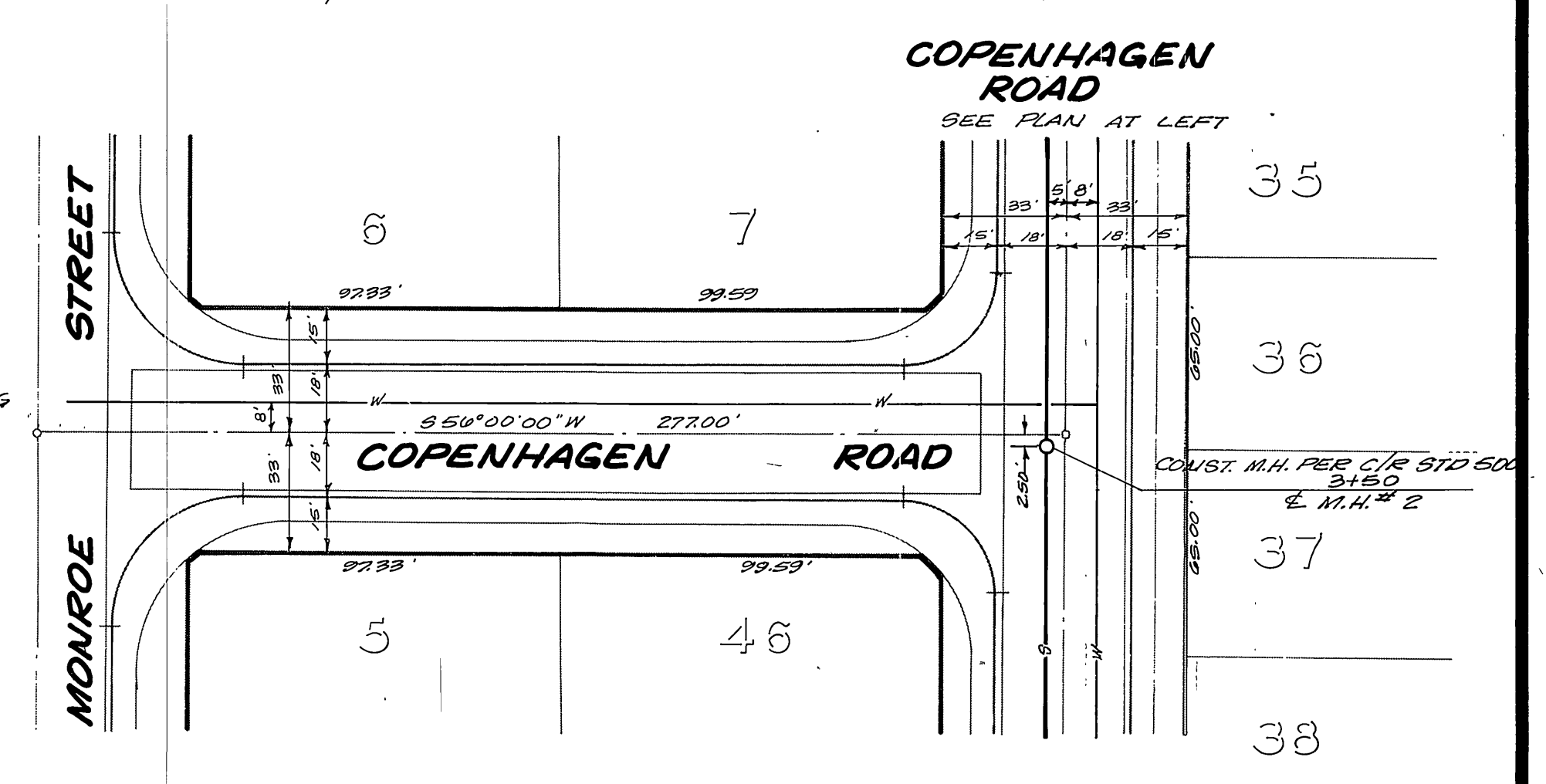
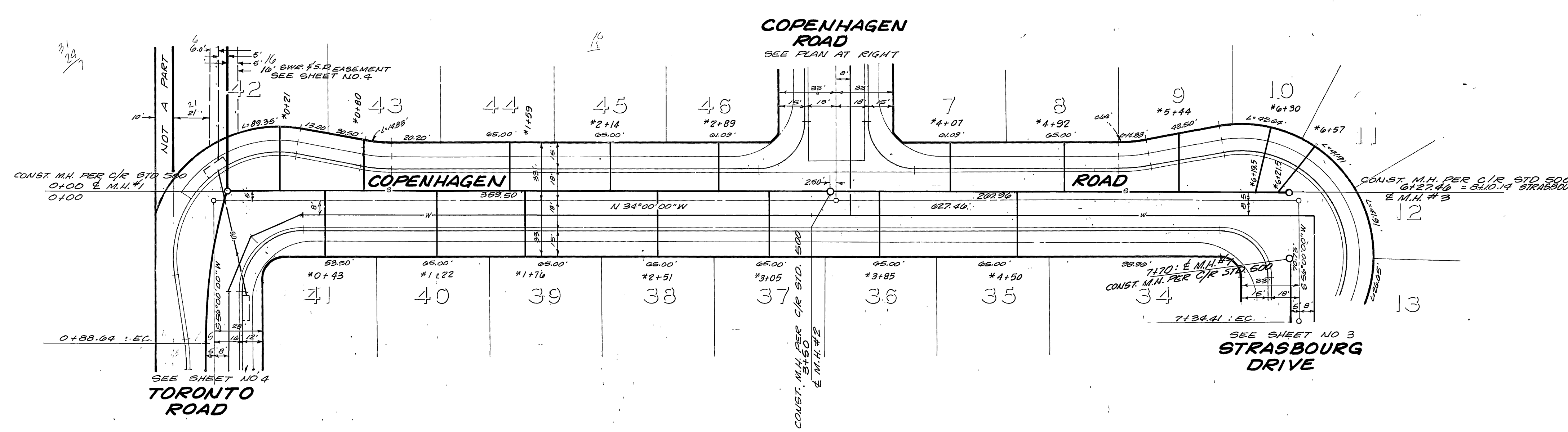
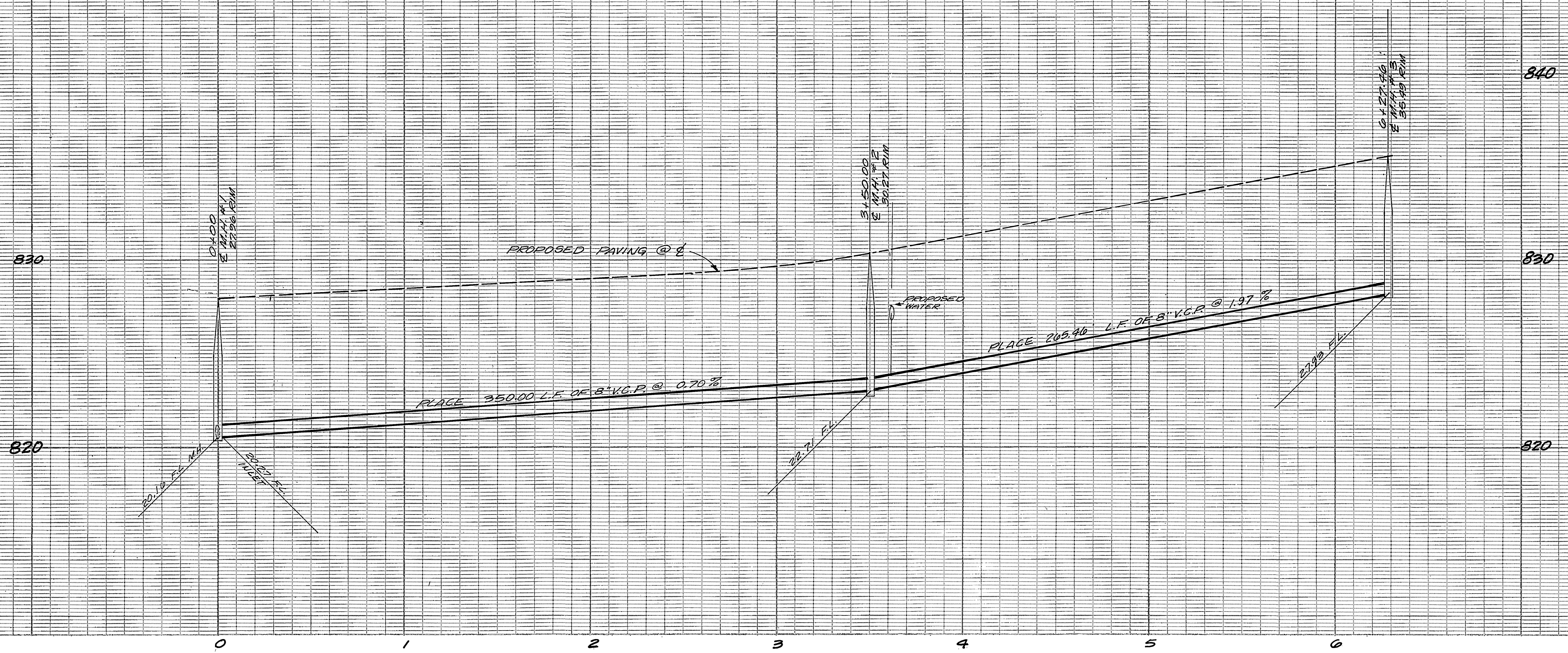
J. F. DAVIDSON ASSOCIATES  
 CIVIL ENGINEERS - SURVEYORS - PLANNERS  
 RIVERSIDE, CALIFORNIA  
 APPROVED BY: *J. W. Carty* DATE 7/20/76  
 R.E. No. 17550

REVISION	DATE
1. REVISED VERTICAL ALIGNMENT	12/10/76
2. SINK EQUALS - RENAMBERED SHEET	12/10/76
3. REVISE SEWER PROFILE & BUILD UP PLATFORM	12/10/76

CITY OF RIVERSIDE, CALIFORNIA  
 DEPARTMENT OF PUBLIC WORKS  
 APPROVED BY: *William D. Harnden*  
 DIRECTOR OF PUBLIC WORKS  
 DATE 12/10/76

\*AS BUILT 3-77 MET  
 SEWER PLAN & PROFILE  
 TRACT 7675-1  
 TORONTO ROAD  
 MONROE STREET  
 HORIZ. SCALE: 1" = 40'  
 VERT. SCALE: 1" = 4'

PROJECT NO.  
 S-1063  
 SHEET 3 OF 5  
 FILE NO. 5501



BENCH MARK:  
 CITY OF RIVERSIDE B.M. F 54  
 FOUND AS NAIL AND TAG ON  
 RIVERSIDE WATER COMPANY  
 CANAL HEADWALL ON WLY  
 SIDE MONROE  
 CITY OF RIVERSIDE F.B. 829/33  
 ELEV. = 845.00

NOTE:  
 FOR GENERAL NOTES  
 SEE SHEET NO 1

APPROVED BY:  
*Wesley J. Taylor*  
 CHIEF UTILITIES ENGINEER, WATER  
 DATE: 11-18-76

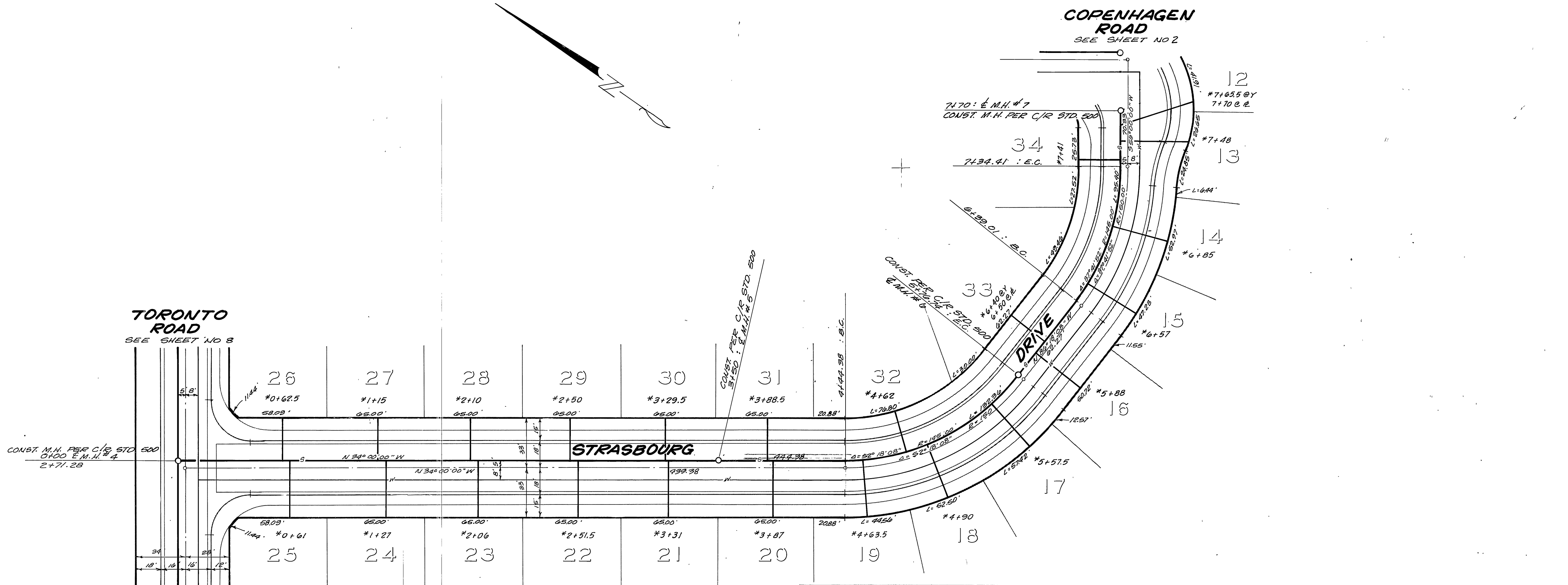
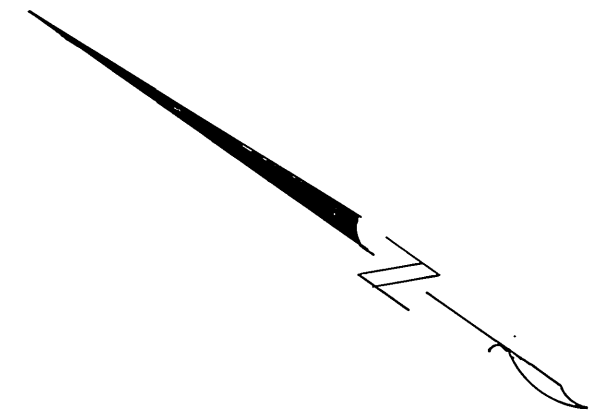
J. F. DAVIDSON ASSOCIATES  
 CIVIL ENGINEERS - SURVEYORS - PLANNERS  
 RIVERSIDE, CALIFORNIA  
 APPROVED BY: *John W. Conley* DATE: 7/20/76  
 R.E. No. 17550  
 W.O. 4938 FOR KENT LAND CO. F.B. 1089

REVISIONS	APPR. DATE
DESIGNED BY	DRAWN BY
CHECKED BY	

CITY OF RIVERSIDE, CALIFORNIA  
 DEPARTMENT OF PUBLIC WORKS  
 APPROVED BY: *William D. Henderson*  
 DIRECTOR OF PUBLIC WORKS  
 DATE: 12/10/76

SEWER PLAN & PROFILE  
 TRACT 7675-1  
 COPENHAGEN ROAD  
 HORIZ. SCALE: 1" = 40'  
 VERT. SCALE: 1" = 4'

PROJECT NO.  
 S-1063  
 SHEET 4 OF 5  
 FILE NO. 5501



BENCH MARK:  
 CITY OF RIVERSIDE B.M. F.S.H.  
 FOUND. RE. NAIL AND TAG ON  
 RIVERSIDE WATER COMPANY  
 CANAL HEADWALL ON WILY  
 SIDE HOUSE  
 CITY OF RIVERSIDE K.B. 839/83  
 ELEV. = 845.60

NOTE:  
 FOR GENERAL NOTES  
 SEE SHEET NO 1

APPROVED BY:  
*Walter Allen*  
 CHIEF UTILITIES ENGINEER, WATER  
 DATE 11-18-26

J. F. DAVIDSON ASSOCIATES  
 CIVIL ENGINEERS - SURVEYORS - PLANNERS  
 RIVERSIDE, CALIFORNIA  
 APPROVED BY: *John W. Canty* DATE 7/20/76  
 R.E. No. 17550  
 W.O. 9938 FOR: KENT LAND CO. F.B. 1299

REVISIONS	APPR. DATE

CITY OF RIVERSIDE, CALIFORNIA  
 DEPARTMENT OF PUBLIC WORKS  
 APPROVED BY: *William S. Hester*  
 DIRECTOR OF PUBLIC WORKS  
 DATE 12/10/76

\*AS BUILT 3-77 KFT  
 SEWER PLAN & PROFILE  
 TRACT 7075-1  
 STRASBOURG DRIVE  
 HORIZ. SCALE: 1" = 40' VERT. SCALE: 1" = 4'

PROJECT NO.  
 S-1063  
 SHEET 5 OF 5  
 FILE NO. 6501