

- GENERAL NOTES**
- Construction shall be in accordance with the standard Specifications for Public Works construction, 1976 Edition, and City of Riverside Standard drawings.
 - It shall be the responsibility of the contractor to clear the right of way in accordance with the provisions of the law as it affects each utility including irrigation lines and appurtenances and at no cost to the City.
 - The pipe shall be bedded per case 1, Standard Drawing No. 952.
 - Location of wyes, and laterals to be determined at the time of construction of the direction of the owner.
 - All stubs and laterals to be constructed per standard drawing No. 562 stubs shall be plugged and capped.
 - Manhole frame and covers to be set to finish grade by the sewer contractor after the final paving of streets.
 - Laterals to be 4" V.C.R. and extended to the property line.
 - A plus shall be installed and will remain in place where the new sewer connects to the existing sewer until the new sewer is accepted by the city.
 - Contractor is to verify existing sewer elevation prior to construction.

NOTICE TO CONTRACTOR

The existence and location of any underground utility pipes or structures shown on these plans are obtained by a search of the available records. To the best of our knowledge, there are no existing utilities except as shown on these plans. The contractor is required to take due precautionary measures to protect the utility lines shown and any other lines not at record or not shown on these plans.

BENCH MARK Elev. 896.317
 R.S.E. P.K. nail 1'29" in conc. curb adjacent to a dirt driveway @ Adams St. NW of Victoria Ave. c/c R.D. 789/79.

*AS BUILT 3:77 KFT

APPROVED BY: *Melby Spilan* 8-4-76
 CHIEF UTILITIES ENGINEER, WATER

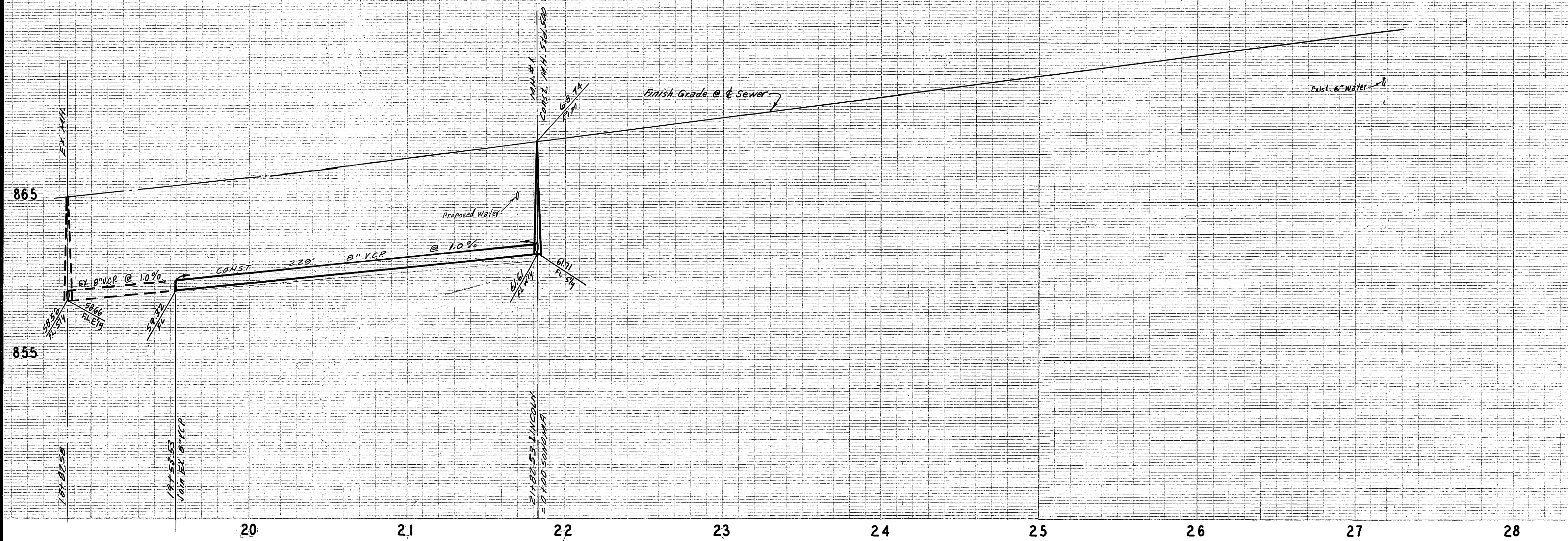
ALBERT A. WEBB ASSOCIATES
 CIVIL ENGINEERS
 RIVERSIDE, CALIFORNIA
 APPROVED BY: *L.R. [Signature]* DATE: 4-30-76
 R.E. No. 16056
 W.O. 76-58 FOR: Andrews Dev. Co. F.B. 1934

MARK	REVISIONS	APPR. DATE

CITY OF RIVERSIDE, CALIFORNIA
 PUBLIC WORKS DEPARTMENT
 APPROVED BY: *[Signature]* DATE: 11/20/76
 PRINCIPAL ENGINEER
 PARK DEPARTMENT
 TRAFFIC DIVISION
 CHIEF PUB. WKS. ENGR. 1120
 DATE: 1-21-77

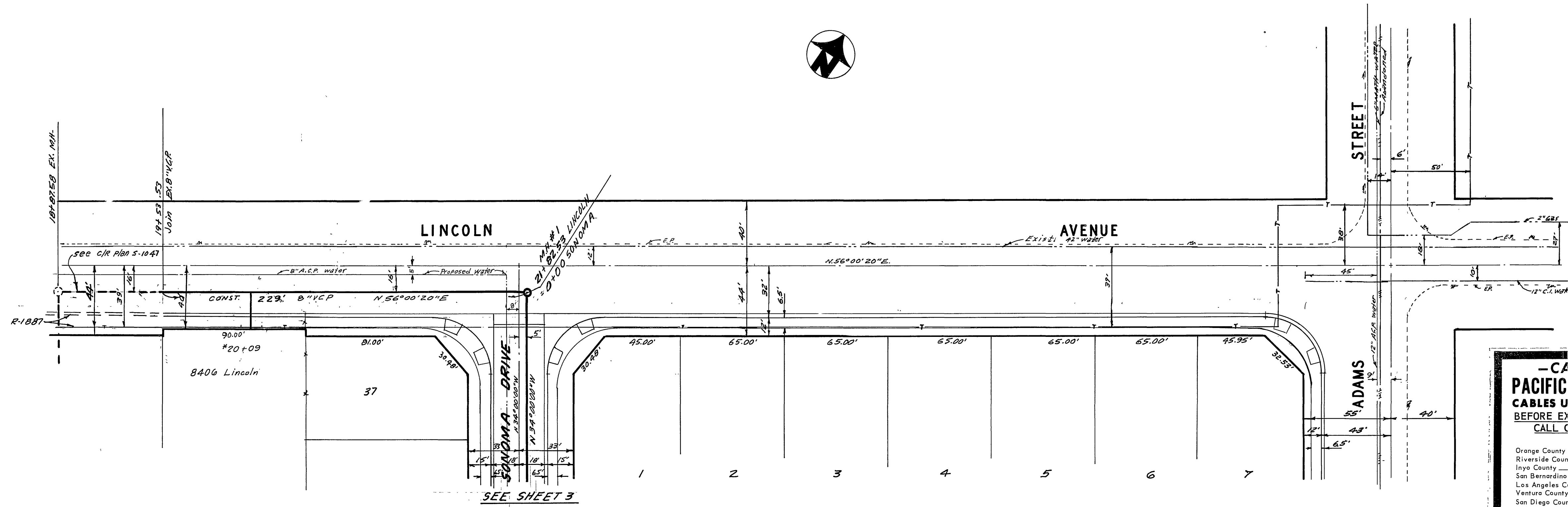
SEWER PLAN AND PROFILE
 INDEX
 TRACT NO. 7640
 SCALE: 1" = 40' Horiz. - 1" = 4' Vert.

ACCOUNT No.
 DRAWING NUMBER
 5-1064
 SHEET 1 OF 5
 76-58-B



BENCH MARK Elev 896.317
 7.5" x 7.5" iron nail in conc. curb adjacent to a dirt driveway @ Adams St. NW of Victoria Ave. C.R. F.B. 739/79.

SEE SHEET ONE FOR GENERAL NOTES.



- CAUTION -
PACIFIC TELEPHONE
CABLES UNDERGROUND
BEFORE EXCAVATING

CALL COLLECT:

7:30 A.M. to 5 P.M.	After Hours
Orange County 714-633-0811	& Holidays 714-547-6606
Riverside County 714-684-0071	714-547-6606
Inyo County 714-684-0071	714-547-6606
San Bernardino County 714-684-0071	714-547-6606
Los Angeles County 213-621-3111	24 HOUR SERVICE
Venture County 213-621-3111	
San Diego County 714-298-0595	714-232-0027

FOR FREE CABLE LOCATING SERVICE

*AS BUILT 3-77 KPT

APPROVED BY
Walter Hylan
 CHIEF UTILITIES ENGINEER, WATER
 8-4-76
 DATE

ALBERT A. WEBB ASSOCIATES
 CIVIL ENGINEERS
 RIVERSIDE, CALIFORNIA
 APPROVED BY *L.Q. Hammett* DATE 4-30-76
 R.E. No. 16056

MARK	REVISIONS	APPR.	DATE

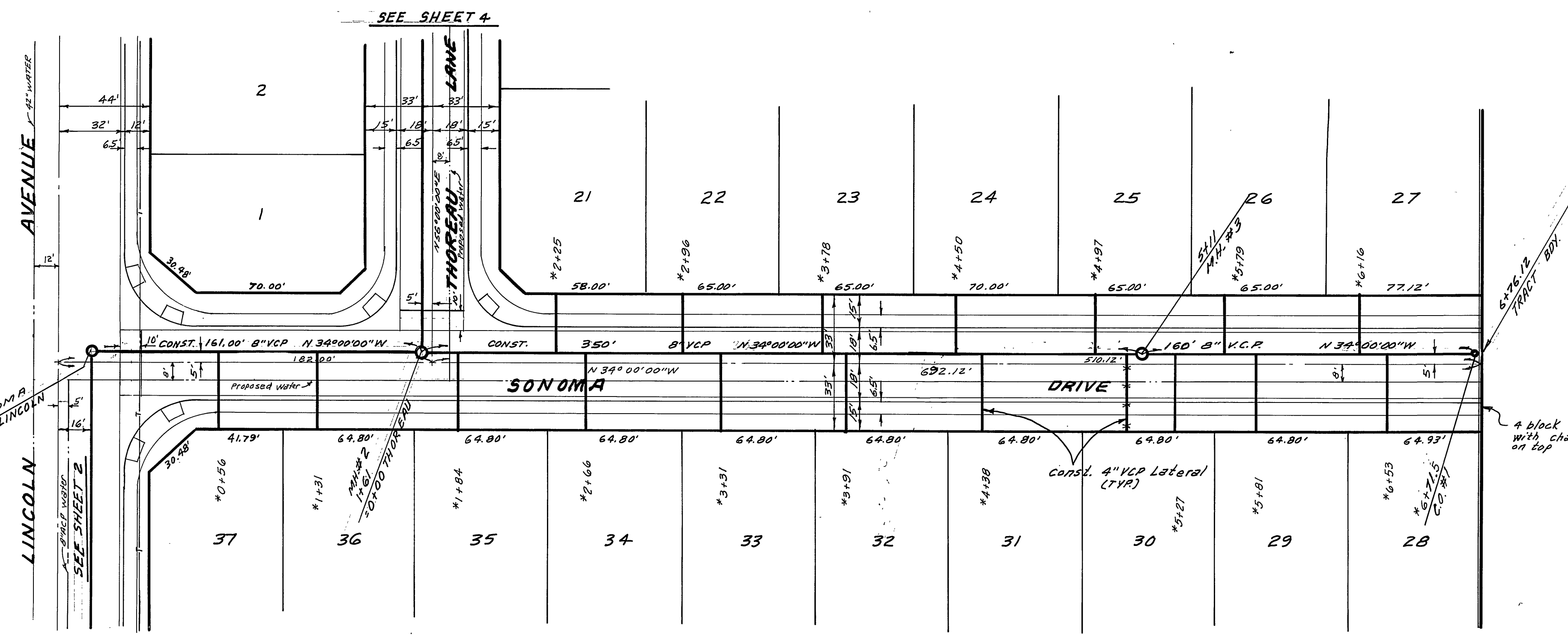
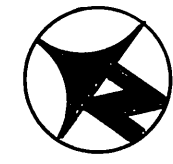
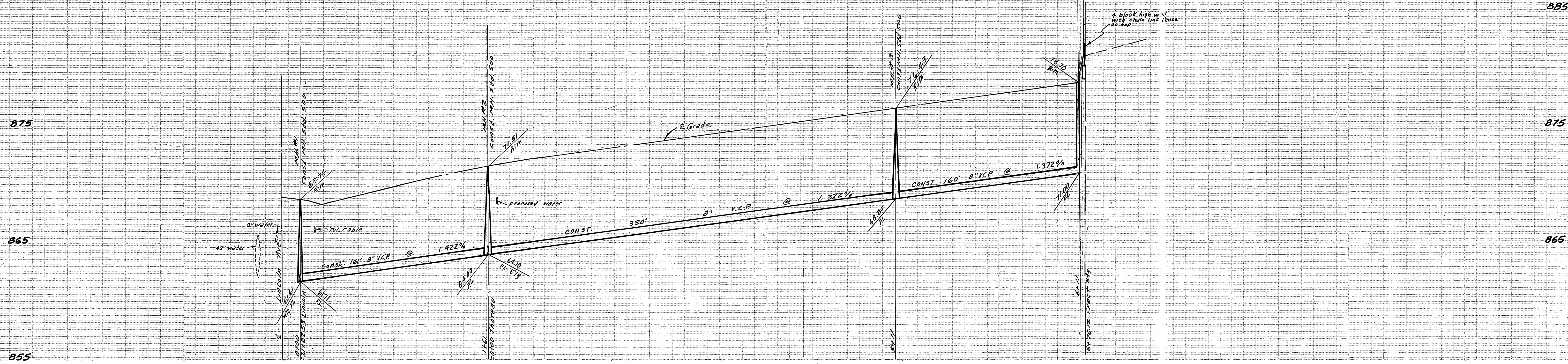
CITY OF RIVERSIDE, CALIFORNIA
 PUBLIC WORKS DEPARTMENT

APPROVED BY
Walter Hylan
 DIRECTOR OF PUBLIC WORKS
 DATE 1-21-77

SEWER PLAN AND PROFILE
LINCOLN AVENUE
 TRACT NO. 7640

ACCOUNT No.
 DRAWING NUMBER
5-1064
 SHEET 2 OF 5
76-58-B

SCALE: 1" = 40' Horiz. 1" = 4' Vert.



BENCH MARK Elev. 896.317
 F.S.F. P.K. right tap in conc. curb adjacent to a dirt driveway @ Adams St. NW of Victoria Ave. S.R. F.B. 739/79.
 SEE SHEET ONE FOR GENERAL NOTES.

APPROVED BY
Walter J. Hylan
 CHIEF UTILITIES ENGINEER, WATER
 DATE 8-4-76

ALBERT A. WEBB ASSOCIATES
 CIVIL ENGINEERS
 RIVERSIDE, CALIFORNIA
 APPROVED BY *L.D. Hancock* DATE 4-30-76
 R.E. No. 76056
 W.O. 76-58 FOR: ANDREWS DEV. CO. F.B. 1034

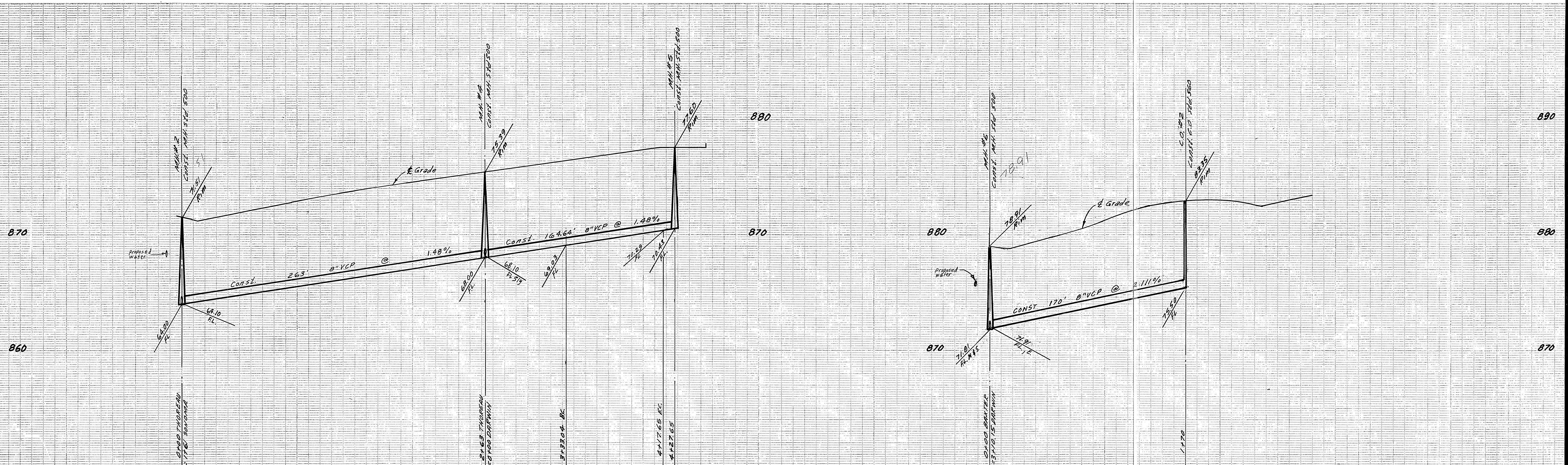
MARK	REVISIONS	APPR.	DATE

DESIGNED BY BEL DRAWN BY BEL CHECKED BY JED

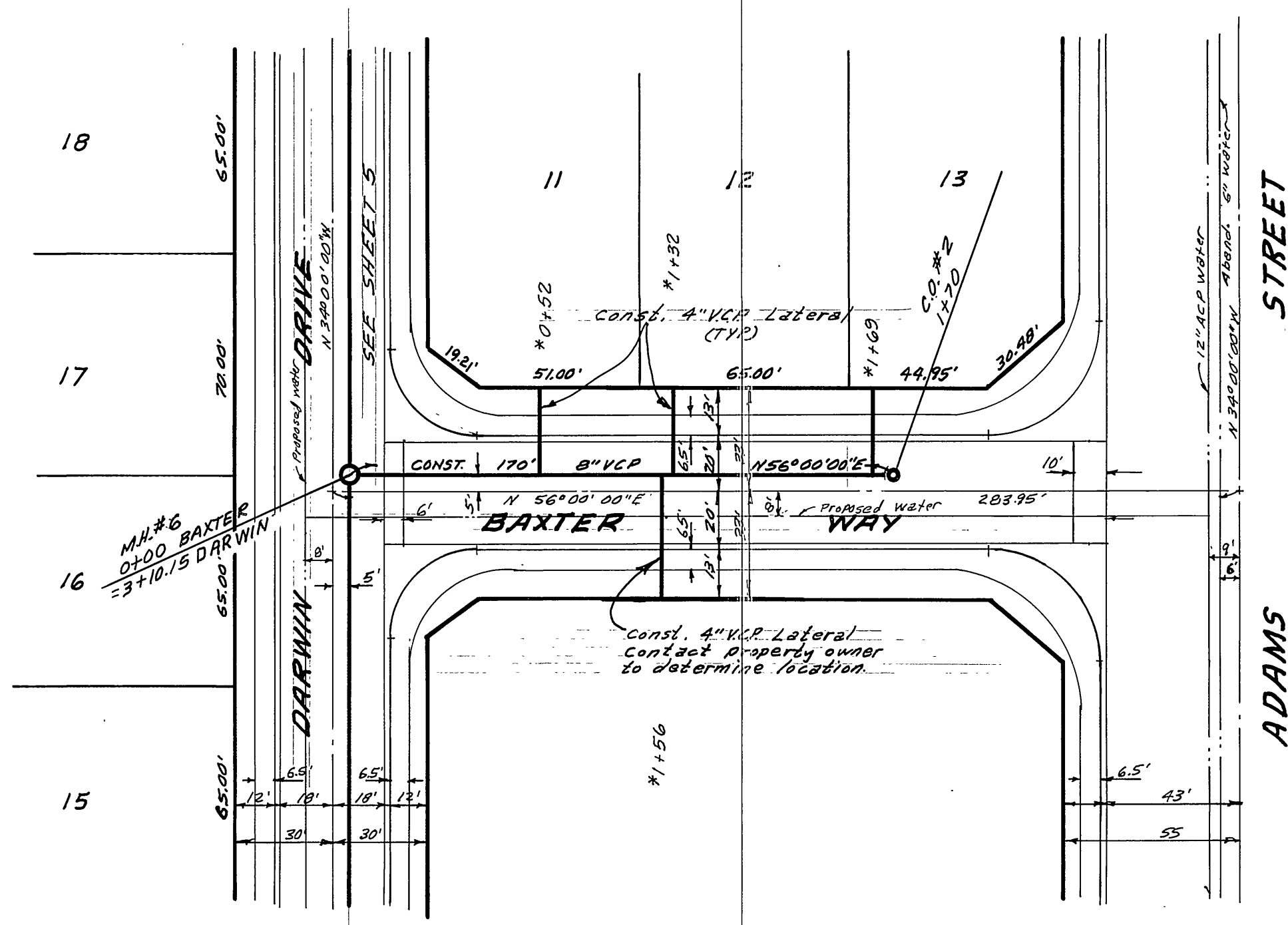
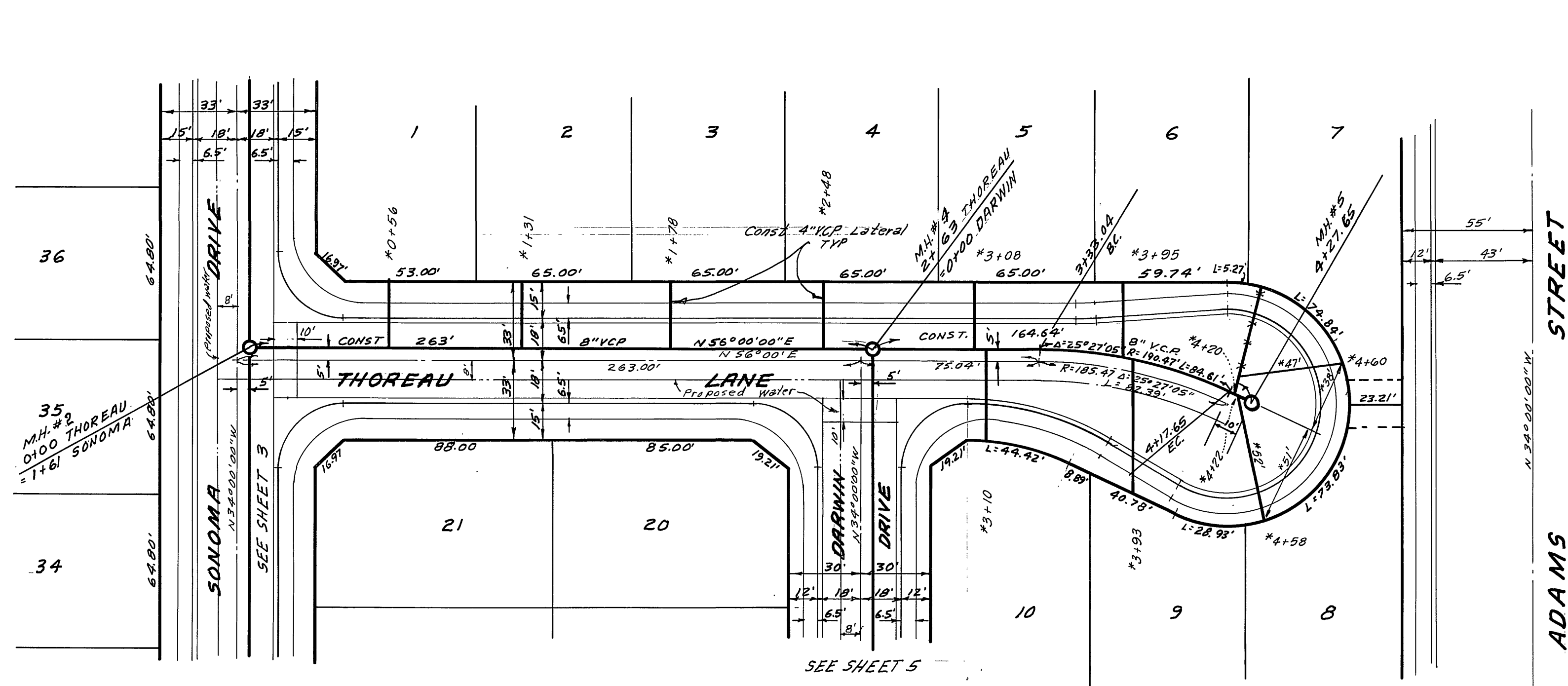
CITY OF RIVERSIDE, CALIFORNIA
 PUBLIC WORKS DEPARTMENT
 APPROVED BY *[Signature]* DATE 1-21-77
 PRINCIPAL ENGINEER
 PARK DEPARTMENT
 TRAFFIC DIVISION
 CHIEF PUB. WKS. ENGR.

*AS BUILT 3-77 KBT
SEWER PLAN AND PROFILE
SONOMA DRIVE
TRACT NO. 7640

ACCOUNT No.
 DRAWING NUMBER
5-1064
 SHEET **3** OF **5**
 SCALE: 1" = 40' Horiz. - 1" = 4' Vert.
76-58-B



BENCH MARK Elev. 896.317
 ESE. PK. nail 8" dia in conc. curb adjacent to
 a dirt driveway @ Adams St. NW of Victoria
 Ave. c/r F.B. 7/30/75.
 SEE SHEET ONE FOR GENERAL NOTES



APPROVED BY
Walter Fisher
 CHIEF UTILITIES ENGINEER, WATER
 8-4-76
 DATE

ALBERT A. WEBB ASSOCIATES
 CIVIL ENGINEERS
 RIVERSIDE, CALIFORNIA
 APPROVED BY *R.D. ...* DATE 8-30-76
 R.E. No. 16056
 W.D. 76-58 FOR: ANDREWS DEV. CO. F.B. 1034

MARK	REVISIONS	APPR. DATE

CITY OF RIVERSIDE, CALIFORNIA
 PUBLIC WORKS DEPARTMENT
 APPROVED BY *[Signature]* DATE 1-21-77
 PRINCIPAL ENGINEER
 PARK DEPARTMENT
 TRAFFIC DIVISION
 CHIEF PUB. WKS. ENGR.

SEWER PLAN AND PROFILE
THOREAU LANE
BAXTER WAY
 TRACT NO. 7640
 SCALE: 1" = 40' Horiz. - 1" = 4' Vert.

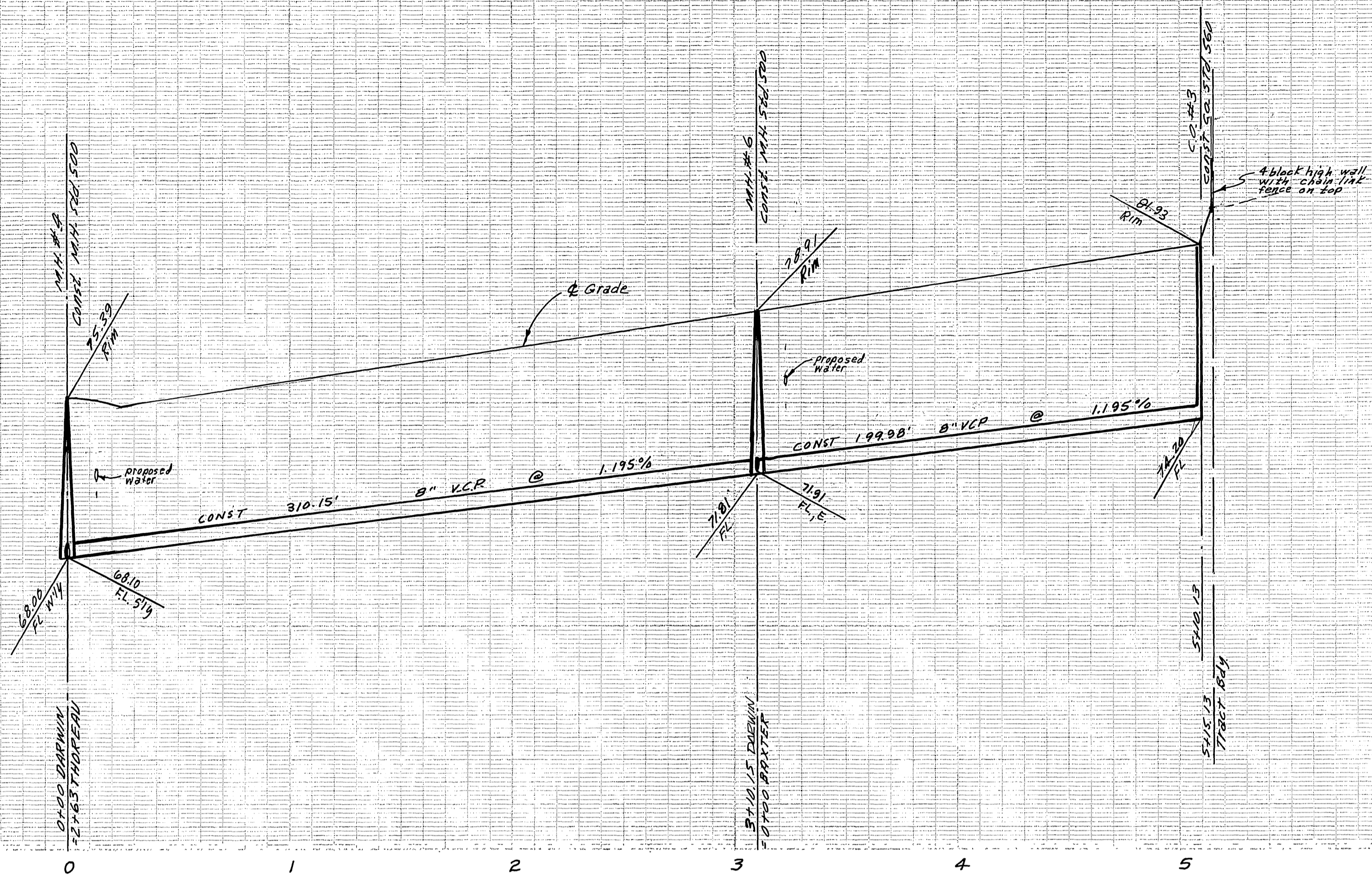
ACCOUNT No.
 DRAWING NUMBER
5-1064
 SHEET 4 OF 5
76-58-B

875

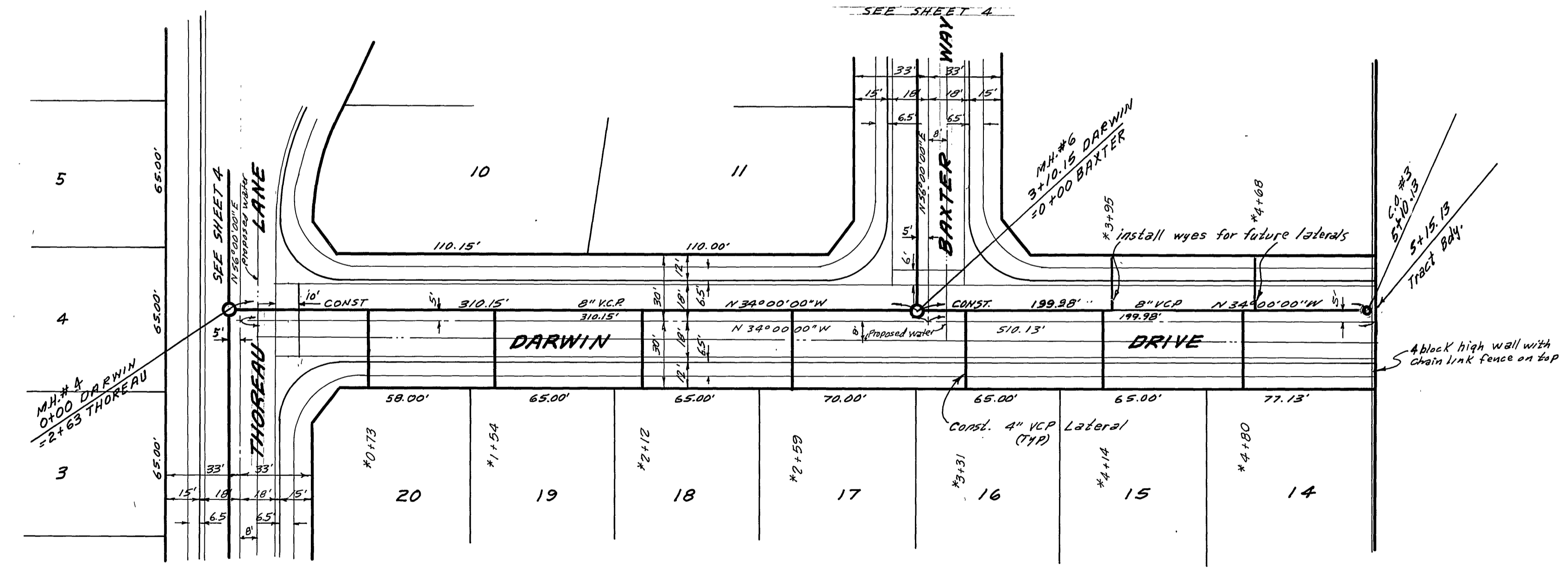
865

885

875



BENCH MARK E/lev. 896.317
 2x2 PK nail flag in conc. curb adjacent to
 a dirt driveway @ Adams St. NWly of Victoria
 Ave. - C.R. - FB 739/79.
 SEE SHEET ONE FOR GENERAL NOTES



APPROVED BY
Wesley Hylan
 CHIEF UTILITIES ENGINEER, WRITER
 DATE 8-4-76

ALBERT A. WEBB ASSOCIATES
 CIVIL ENGINEERS
 RIVERSIDE, CALIFORNIA
 APPROVED BY *S.D. Stewart* DATE 4-30-76
 R.E. No. 16056
 W.O. 76-58 FOR ANDREWS' DEV. CO. F.B. 1034

MARK REVISIONS APPR. DATE
 DESIGNED BY BEL DRAWN BY BEL CHECKED BY

CITY OF RIVERSIDE, CALIFORNIA
 PUBLIC WORKS DEPARTMENT
 APPROVED BY *[Signature]* DATE 1-21-77
 PRINCIPAL ENGINEER
 PARK DEPARTMENT
 TRAFFIC DIVISION
 CHIEF PUB. WKS. ENGR.

*AS BUILT 3-77 KET
 SEWER PLAN AND PROFILE
DARWIN DRIVE
 TRACT NO. 7640
 SCALE: 1" = 40' Horiz. - 1" = 4' Vert.

ACCOUNT No.
 DRAWING NUMBER
5-1064
 SHEET 5 OF 5
 76-58-B