

LOCATION MAP
NO SCALE

GENERAL NOTES

1. Construction shall be in accordance with standard specifications for Public Works Construction, 1976 Edition, and City of Riverside Standard Drawings.
2. It shall be the responsibility of the Contractor to clear the right of way in accordance with the provisions of law as it affects each utility including irrigation lines and appurtenances and at no cost to the City.
3. Pipe shall be bedded per Case 1, Standard Drawing No 452, unless otherwise specified on plans.
4. Location of Nyes and Laterals to be determined at the direction of the owner.
5. All stubs and laterals to be constructed in accordance with standard Drawing 562; stubs to be plugged and capped.
6. Manhole frames and covers to be set as noted in profile by sewer Contractor after final paving of streets.
7. Laterals are to be 4" and extended to property line.
8. Prior to construction of Sewer, Contractor is to expose existing sewer and contact the Engineer for verification of existing location and elevation.
9. Encase sewer 4.5' each side of proposed water main crossing per Public Utilities Drawing C.W.D 023, Type B.

NOTICE TO CONTRACTOR

The existence and location of underground utility pipes or structures shown on these plans are obtained by a search of the available records. To the best of our knowledge, there are no existing utilities except as shown on these plans.

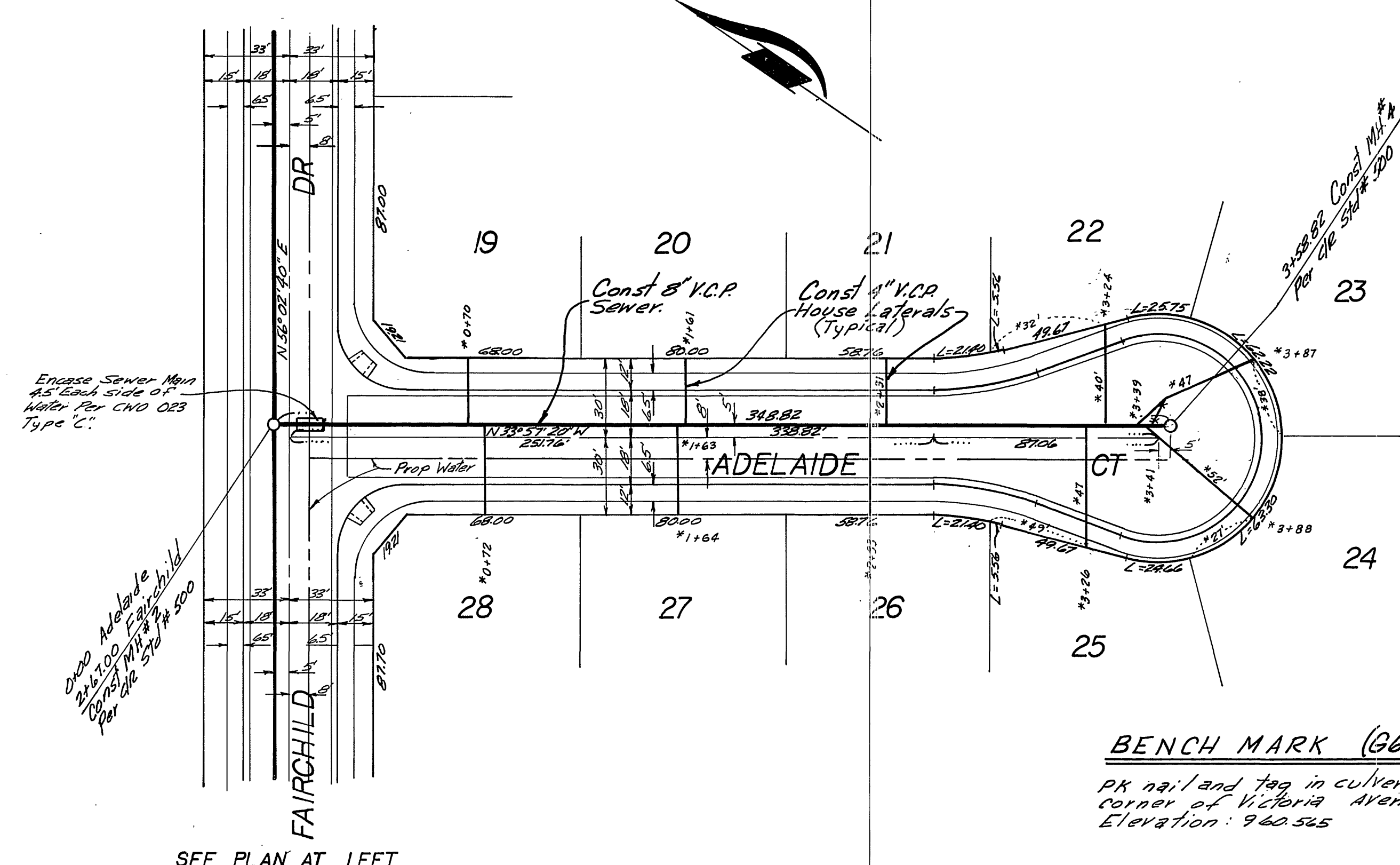
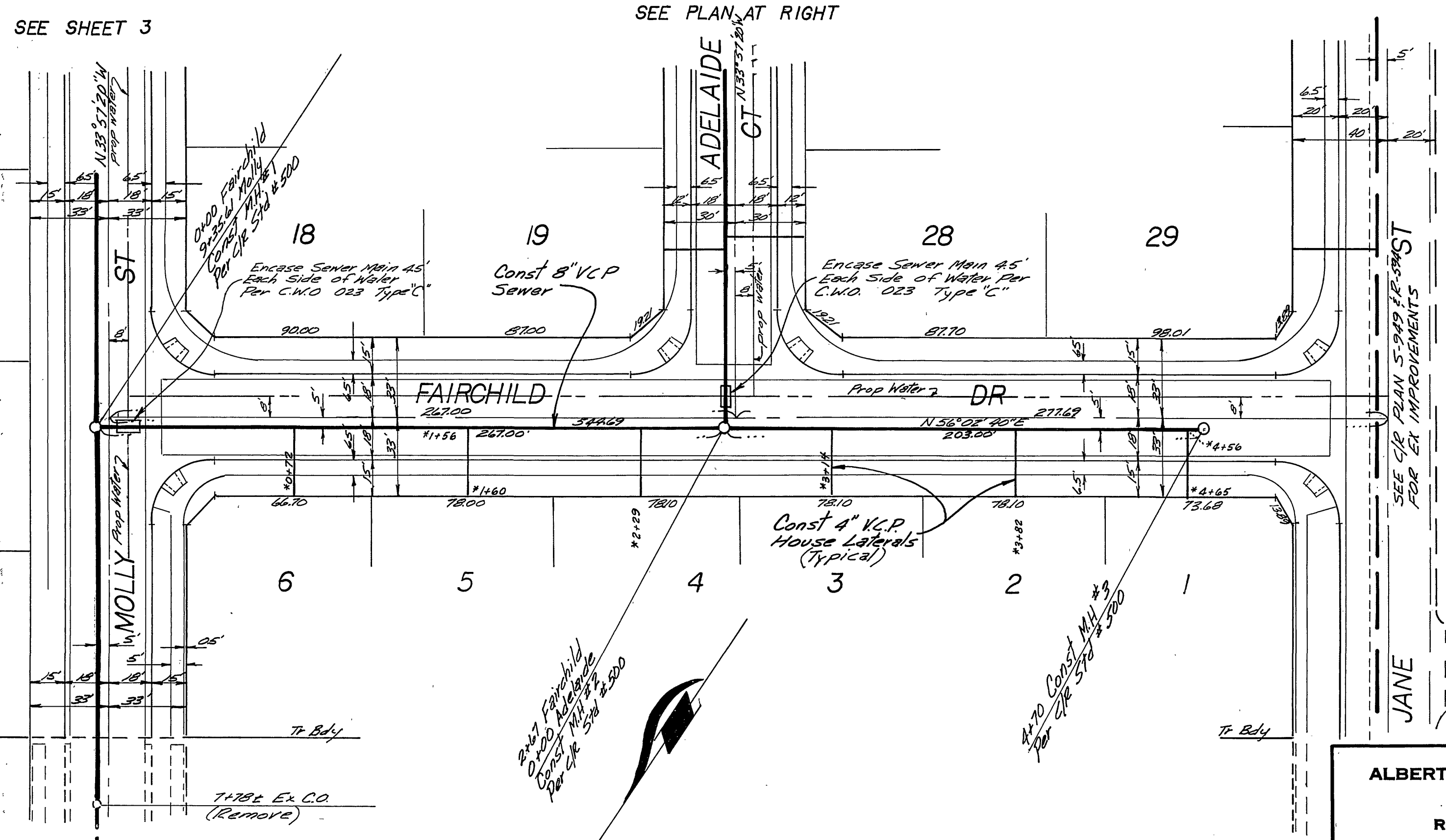
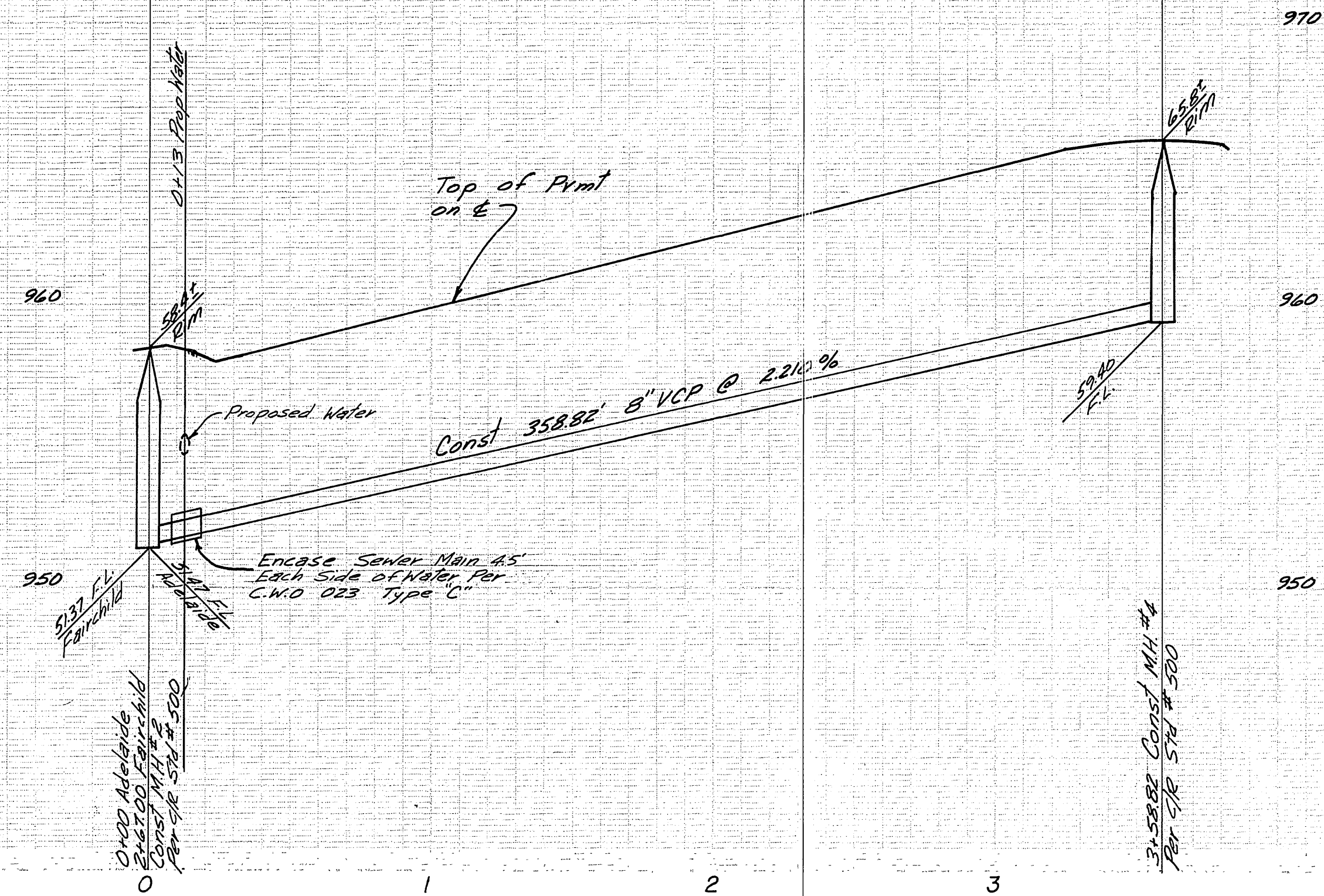
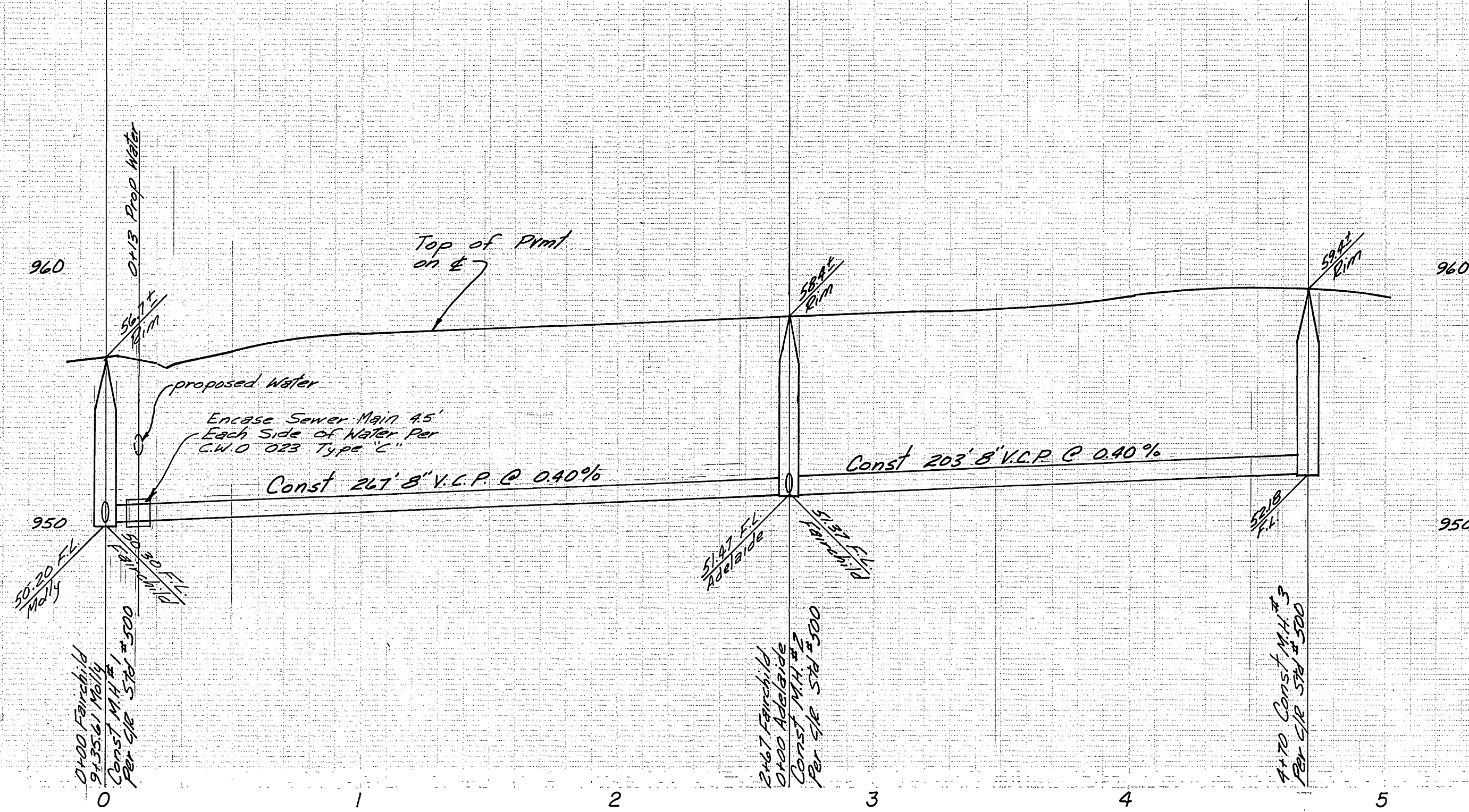
The Contractor is required to take due precautionary measures to protect the utility lines shown and any other lines not of record or not shown on these plans.

BENCH MARK (64-G)

PX nail and tag in culvert headwall at westerly corner of Victoria Avenue and Anna Street. Elevation: 960.545

INDEX MAP
SCALE 1"=60'

ALBERT A. WEBB ASSOCIATES CIVIL ENGINEERS RIVERSIDE, CALIFORNIA APPROVED BY: <i>[Signature]</i> DATE: 9/21/76 R.E. No. 2876	APPROVED BY: <i>[Signature]</i> DATE: 9-28-76 Chief Utility Engineer - Water	CITY OF RIVERSIDE, CALIFORNIA PUBLIC WORKS DEPARTMENT		ACCOUNT No. DRAWING NUMBER
		APPROVED BY: <i>[Signature]</i> DATE: 12-23-76 CHIEF PUB. WKS. ENGR.	PARK DEPARTMENT TRAFFIC DIVISION	SEWER PLAN PROFILE TRACT NO 7264 INDEX SHEET
W.O. 75-302 FOR: Charles Sutherland F.B. 1038	DESIGNED BY: REC DRAWN BY: LRM CHECKED BY: []	MARK REVISIONS APPR. DATE	DATE: 12-23-76	SCALE: AS SHOWN 75-302-B



ALBERT A. WEBB ASSOCIATES
 CIVIL ENGINEERS
 RIVERSIDE, CALIFORNIA
 APPROVED BY: *Earl N. Will* DATE: 12/1/76
 R.E. No. 28716

MARK	REVISIONS	APP. DATE

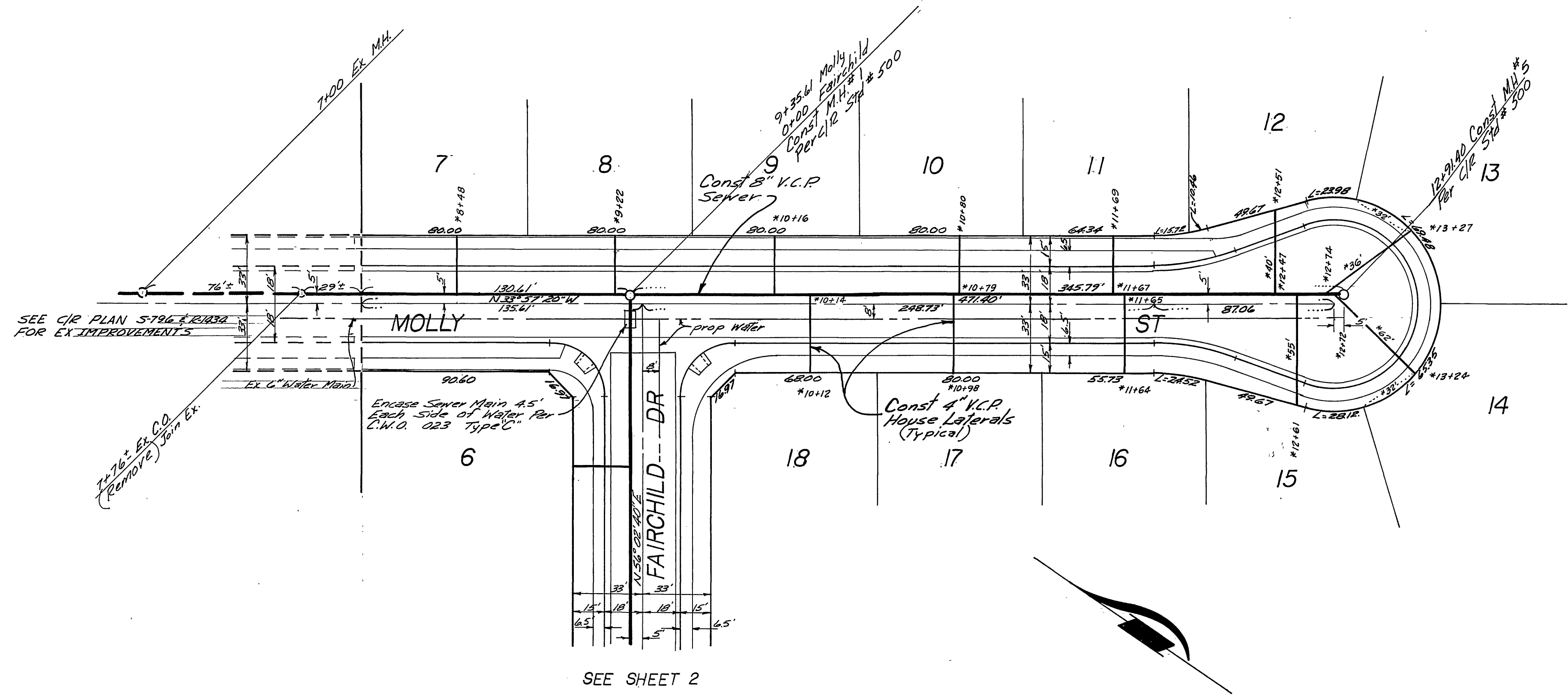
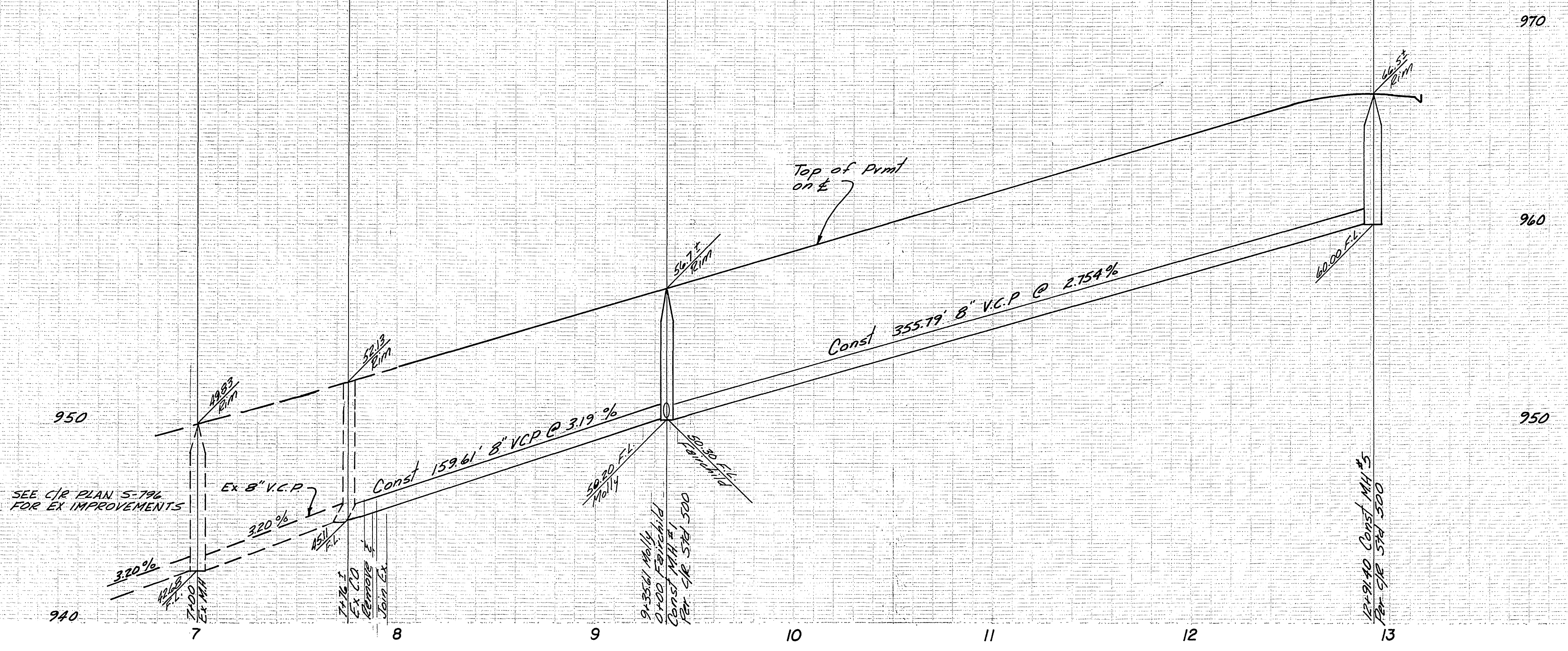
Approved By: *Mark Johnson*
 Chief Utilities Engineer - Water
 DATE: 12-23-76

CITY OF RIVERSIDE, CALIFORNIA
 PUBLIC WORKS DEPARTMENT

APPROVED BY: *[Signature]*
 PRINCIPAL ENGINEER
 PARK DEPARTMENT
 TRAFFIC DIVISION
 CHIEF PUB. WKS. ENGR.
 DATE: 12-23-76

SEWER PLAN & PROFILE
 TRACT NO 7264
 FAIRCHILD DR.
 ADELAIDE CT.

ACCOUNT No.
 DRAWING NUMBER
 S-1065
 SHEET 2 OF 3
 75-302-B



BENCH MARK (66-G)

PK nail and tag in culvert headwall at westerly corner of Victoria Avenue and Anna Street. Elevation: 960.565

ALBERT A. WEBB ASSOCIATES
 CIVIL ENGINEERS
 RIVERSIDE, CALIFORNIA
 APPROVED BY: *[Signature]* DATE 9/21/76
 R.E. No. 2876

MARK	REVISIONS	APPR.	DATE

Approved By: *[Signature]* DATE 9-28-76
 Chief Engineer - Water
 CITY OF RIVERSIDE, CALIFORNIA
 PUBLIC WORKS DEPARTMENT
 APPROVED BY: *[Signature]* DATE 12/23/76
 PRINCIPAL ENGINEER
 PARK DEPARTMENT
 TRAFFIC DIVISION
 CHIEF PUB. WKS. ENGR.

*AS BUILT 3:77 KPT
 SEWER PLAN & PROFILE
 TRACT NO 7264
 MOLLY ST
 SCALE: Horiz 1"=40' Vert 1"=4'

ACCOUNT No.	
DRAWING NUMBER	5-1065
SHEET	3 OF 3
75-302-B	