

INDEX MAP
SCALE 1"=100'

GENERAL NOTES

1. Construction shall be in accordance with Standard Specifications for Public Works Construction, 1976 Edition, and City of Riverside Standard Drawings.
2. It shall be the responsibility of the Contractor to clear the right of way in accordance with the provisions of law as it affects each utility including irrigation lines and appurtenances and of no cost to the City.
3. Pipe shall be bedded per Case I, Standard Drawing No. AS2, unless otherwise specified on plans.
4. Location of Wyes and Laterals to be determined of the direction of the owner.
5. All stubs and laterals to be constructed in accordance with Standard Drawing AS2; stubs to be plugged and capped.
6. Manhole frames and covers to be set as noted in profile by sewer Contractor after final paving of streets.
7. Laterals are to be 4" and extended to property line.
8. Prior to construction of Sewer, Contractor is to expose existing sewer and contact the Engineer for verification of existing location and elevation.
9. Encase sewer 4.5' each side of proposed water main crossing per Public Utilities Drawing C.W.D. 023, Type B.
10. The Sewer Contractor has the option to construct vertical curve flowline design or the straight flowline design. The contractor is to notify the Engineer prior to starting, as to design to be constructed.
11. A plug shall be installed & will remain in place where the new sewer connects with the existing sewer until the new sewer is accepted by the City.

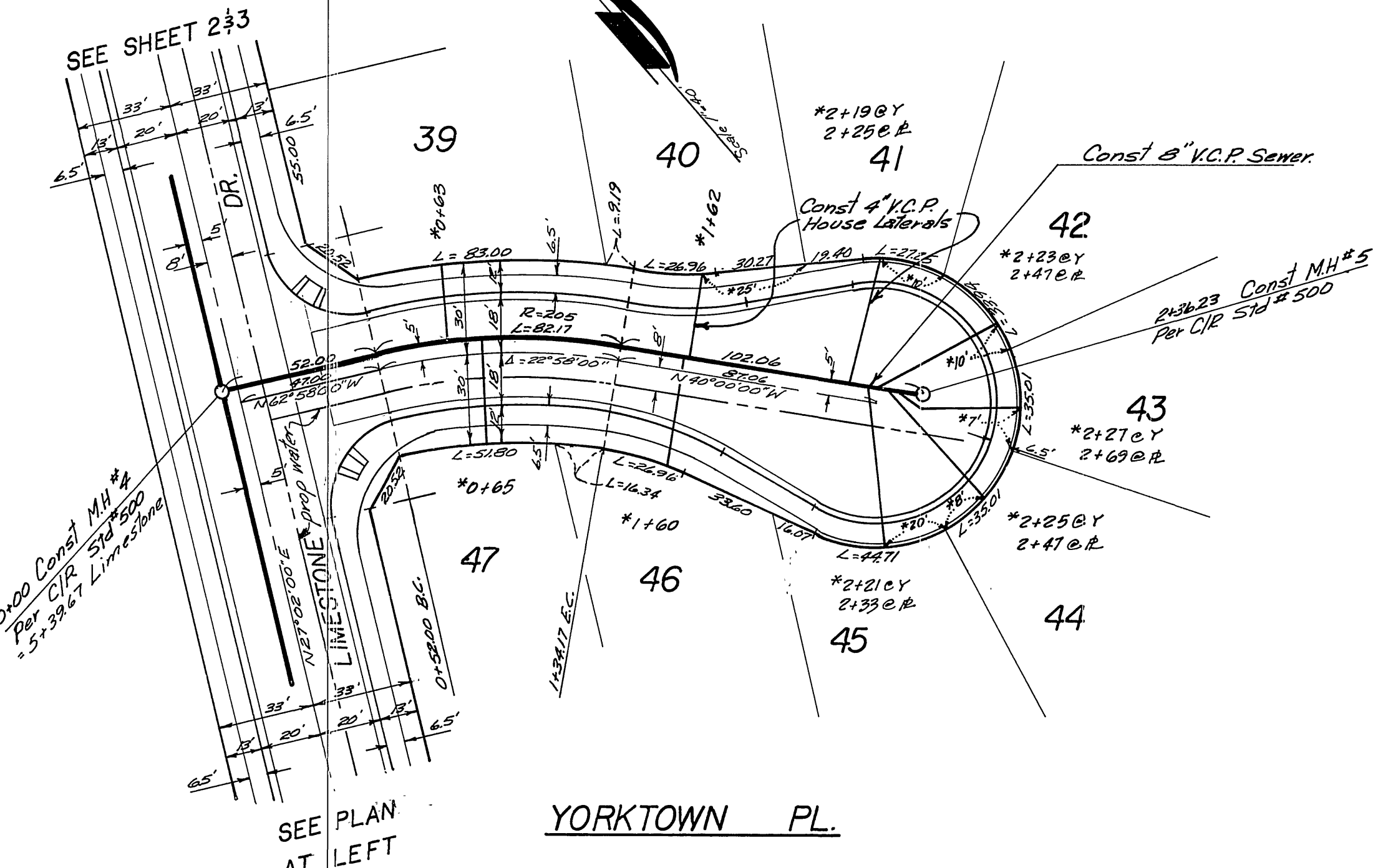
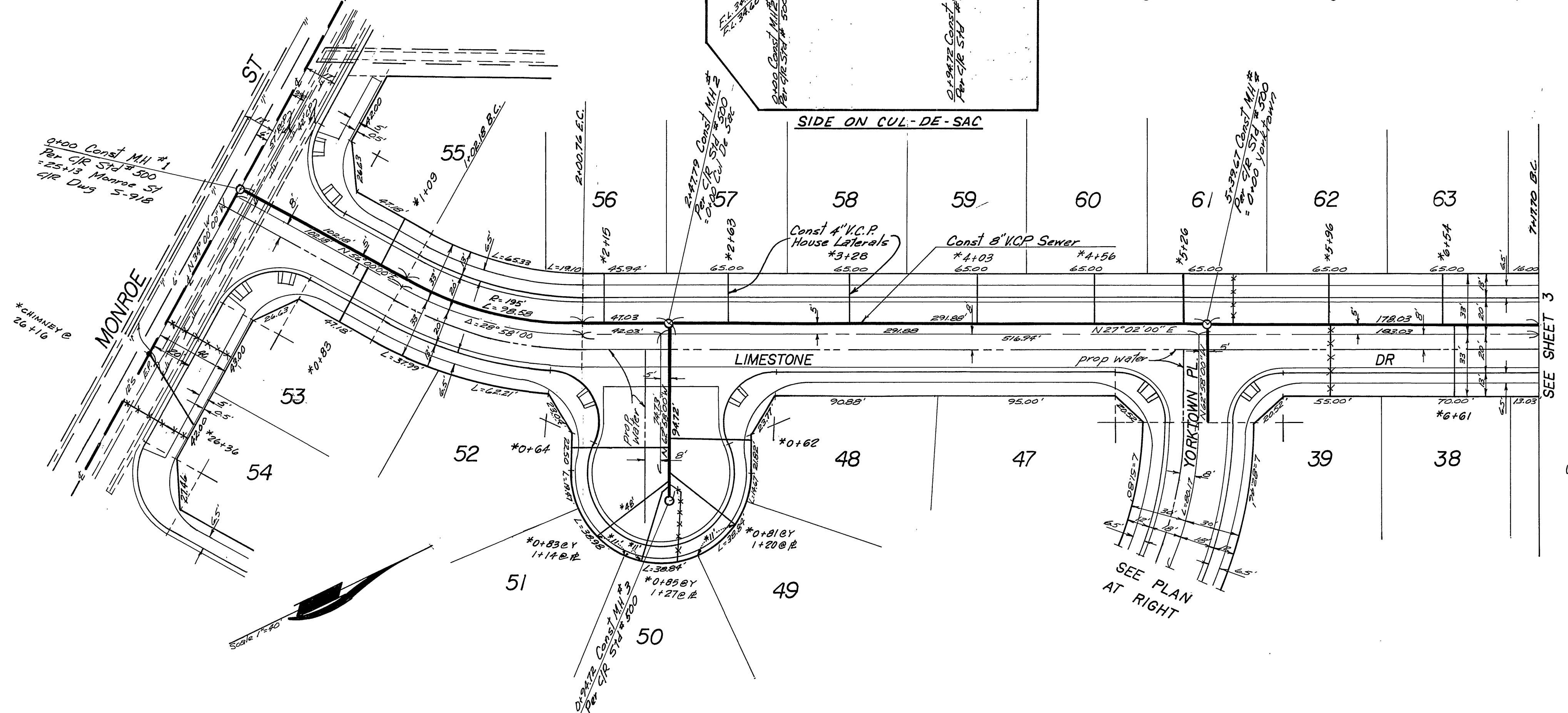
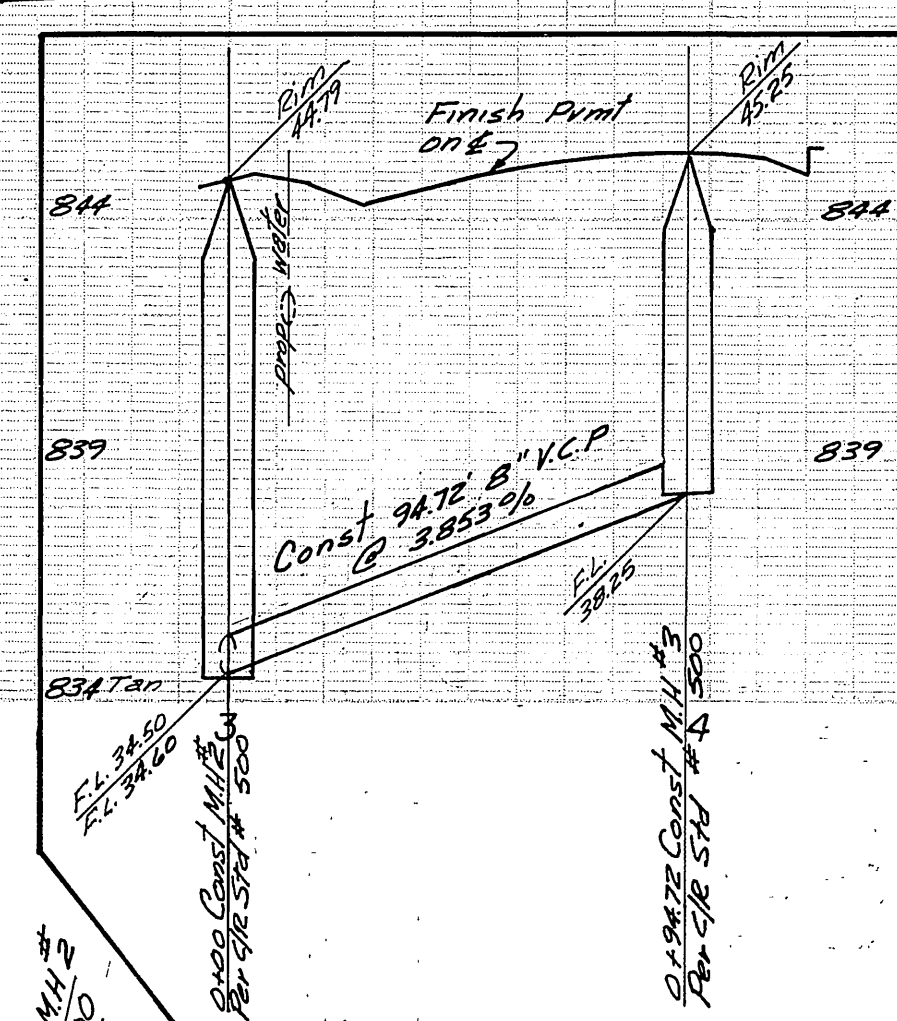
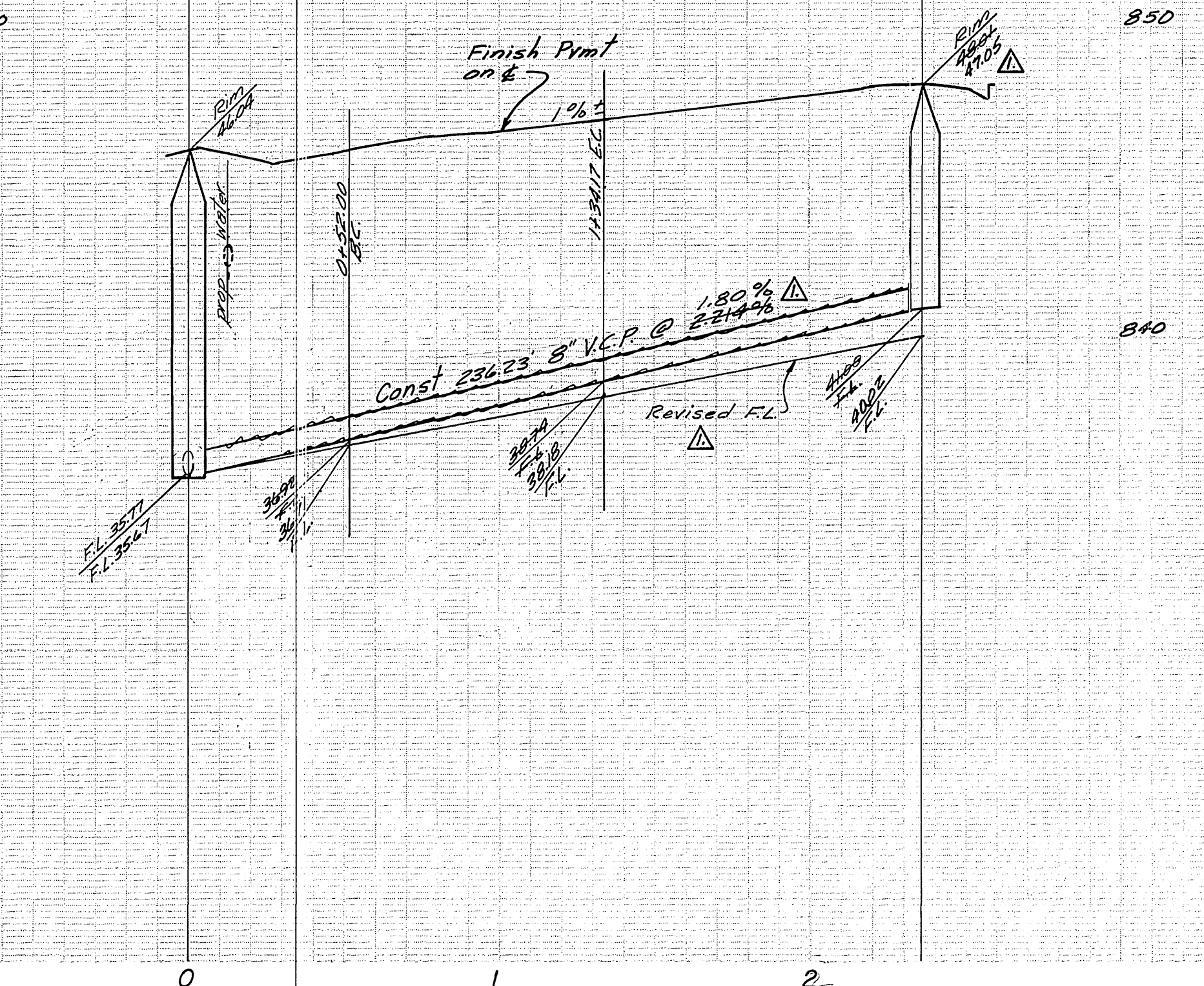
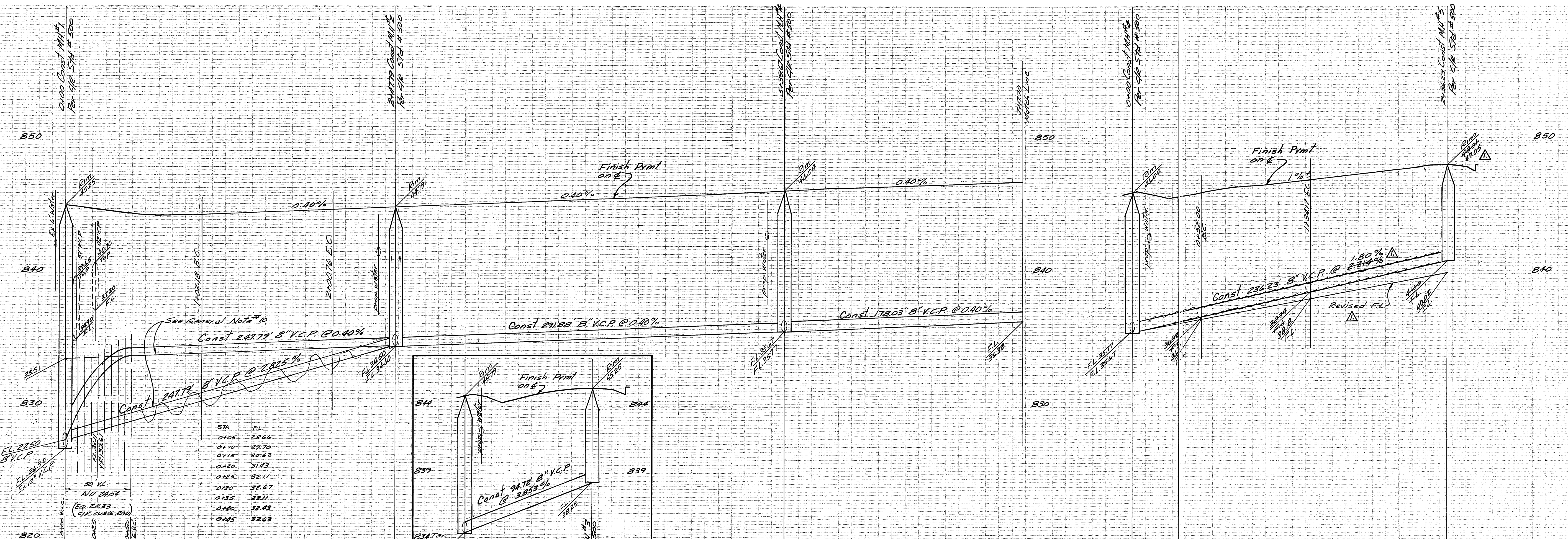
NOTICE TO CONTRACTOR

The existence and location of underground utility pipes or structures shown on these plans were obtained by a search of the available records. To the best of our knowledge, there are no existing utilities except as shown on these plans.

The Contractor is required to take due precautionary measures to protect the utility lines shown and any other lines not of record or not shown on these plans.

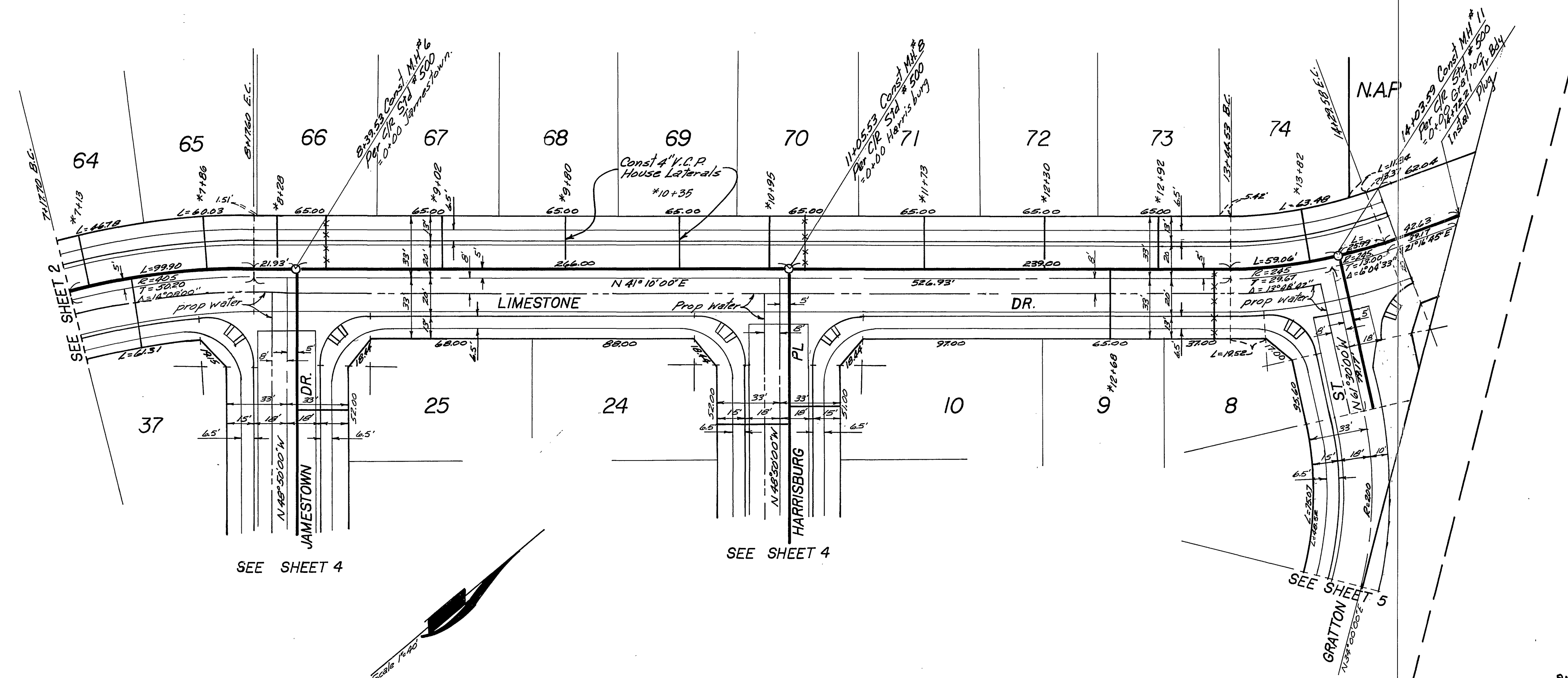
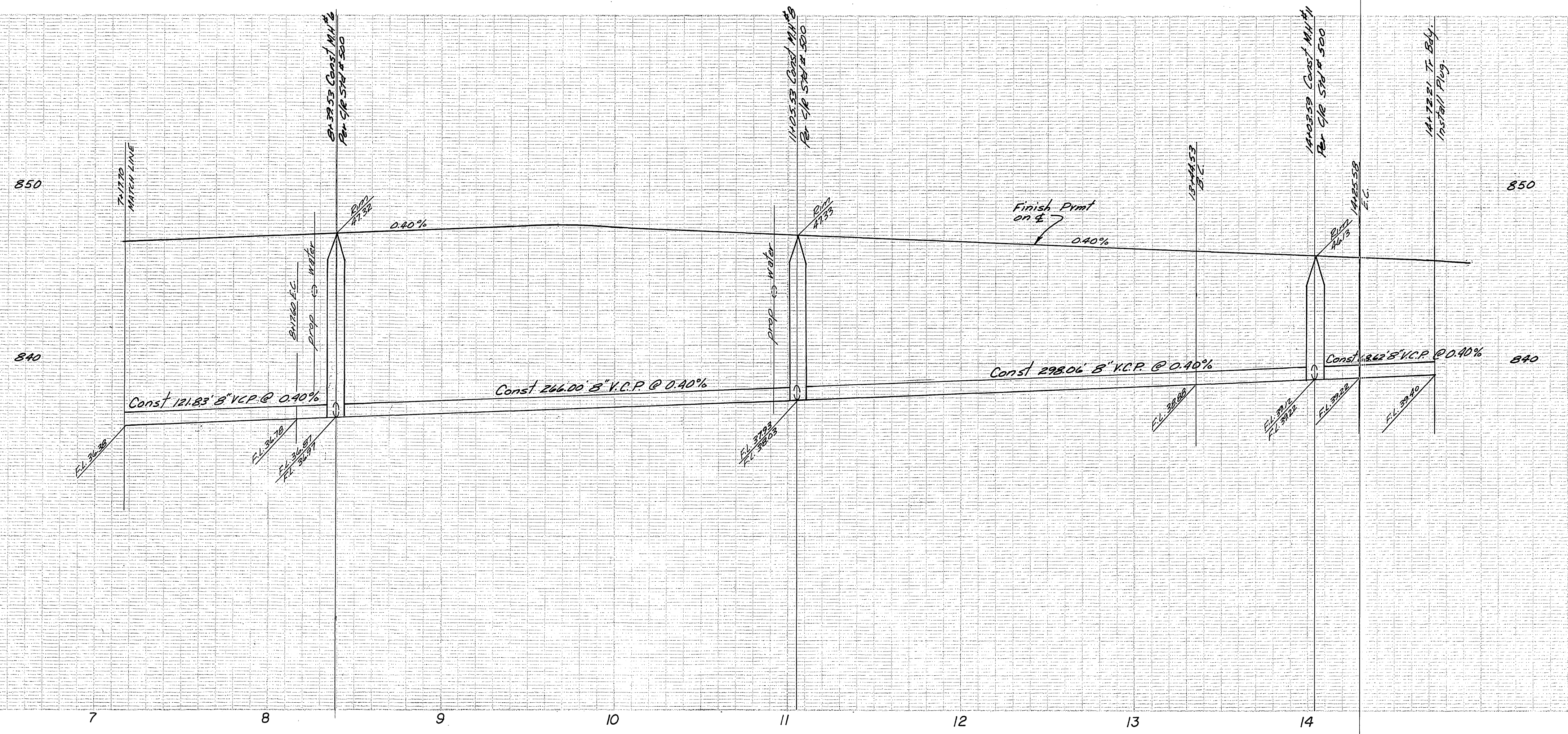
BM (F 5H) Elev = 845.589
PK nail tag in R.W.D canal headwall on Nly side of Monroe Street DR F.S. 839.23.

<p>ALBERT A. WEBB ASSOCIATES CIVIL ENGINEERS RIVERSIDE, CALIFORNIA</p> <p>APPROVED BY: <i>P. N. Will</i> DATE: 8/5/76 R.E. No. 2872</p> <p>W.O. 75-161 FOR Woodhaven Enterprises F.B. 1026</p>	<p>APPROVED BY: <i>W. J. ...</i> DATE: 12-30-76 Chief Utilities Engineer, Water</p> <p>CITY OF RIVERSIDE, CALIFORNIA PUBLIC WORKS DEPARTMENT</p> <p>APPROVED BY: <i>[Signature]</i> DATE: 1-3-77 DIRECTOR OF PUBLIC WORKS</p> <p>MARK REVISIONS APPR. DATE</p> <p>DESIGNED BY: D.B. DRAWN BY: L.E.M. CHECKED BY: G.M.</p>	<p>ACCOUNT No. DRAWING NUMBER</p> <p>TRACT NO 7873 INDEX SHEET</p> <p>SHEET 1 OF 5</p> <p>SCALE: As Shown</p>	<p>*AS BUILT 8-77 KET</p> <p>75-161-B</p>
--	---	---	---



BM (F54) Elev = 845.579
 PK nail tag in RWC canal headwall
 on Wly side of Monroe Street.
 c/c 1.8.88/83.
 *AS BUILT 8-77 KET

ALBERT A. WEBB ASSOCIATES CIVIL ENGINEERS RIVERSIDE, CALIFORNIA APPROVED BY: <i>[Signature]</i> DATE: 8/9/76 R.E. No. 2876		Approved By: <i>[Signature]</i> DATE: 12-30-76 Chief Utilities Engineer, Water		CITY OF RIVERSIDE, CALIFORNIA PUBLIC WORKS DEPARTMENT APPROVED BY: <i>[Signature]</i> DATE: 12-31-77 DIRECTOR OF PUBLIC WORKS		SEWER PLAN PROFILE TRACT NO 7873 LIMESTONE DR. YORKTOWN PL.		ACCOUNT No. DRAWING NUMBER 5-1066 SHEET 2 OF 5	
W.O. 75-161 FOR Wood Haven Enterprises F.B.J.D.R.		DESIGNED BY: <i>[Signature]</i> DRAWN BY: <i>[Signature]</i> CHECKED BY: <i>[Signature]</i>		DATE: 1-31-77		SCALE: HORIZ 1"=40' VERT 1"=4'		75-161-B	



BM (F5H) Elev = 845.599
 PK nail tag in RMC canal headwall
 on Wly side of Monroe Street
 c/c R.F.S. 5/29/33.

*AS BUILT 8-77 KPT

ALBERT A. WEBB ASSOCIATES
 CIVIL ENGINEERS
 RIVERSIDE, CALIFORNIA
 APPROVED BY: *[Signature]* DATE: 8/9/76
 R.E. No. 2276

MARK	REVISIONS	APPR.	DATE

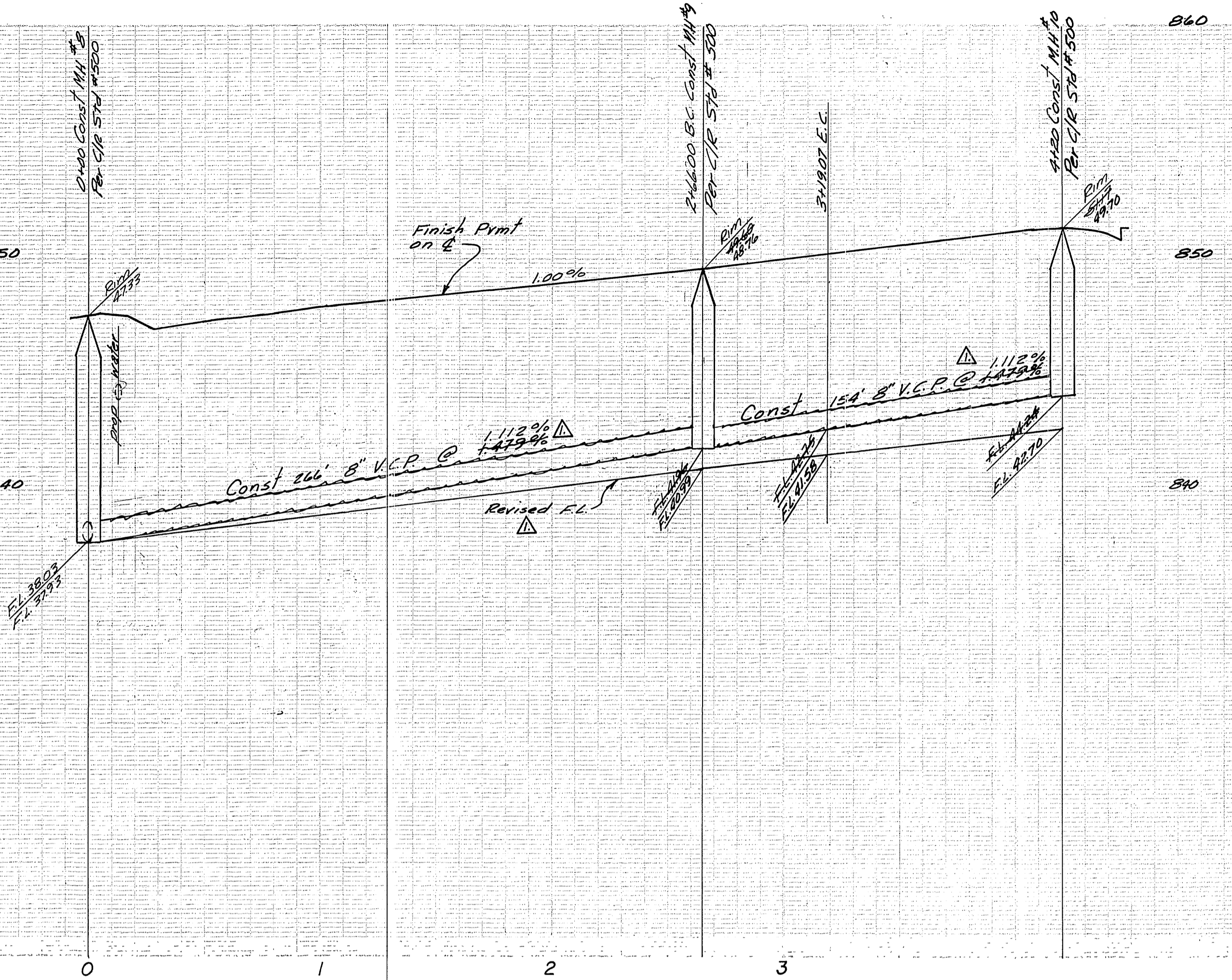
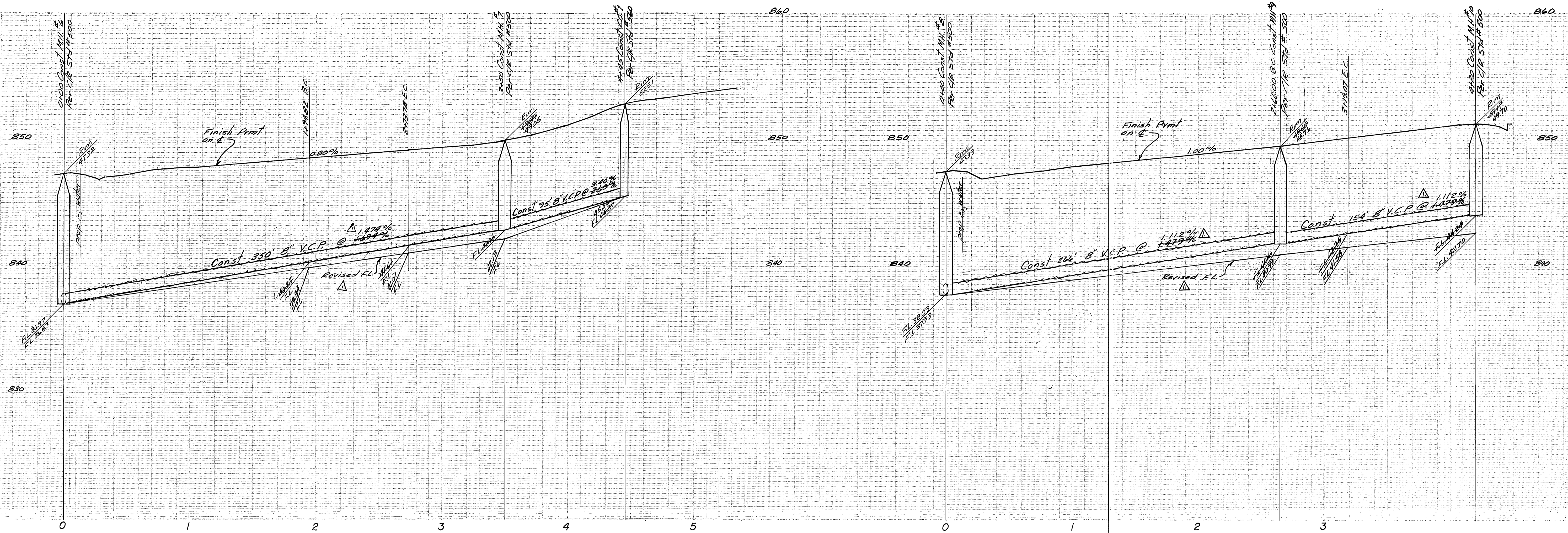
Approved By: *[Signature]*
 Chief Utilities Engineer, Water
 DATE: 12-20-76

CITY OF RIVERSIDE, CALIFORNIA
 PUBLIC WORKS DEPARTMENT

APPROVED BY: *[Signature]*
 PRINCIPAL ENGINEER
 PARK DEPARTMENT
 TRAFFIC DIVISION
 CHIEF PUB. WKS. ENGR. DATE: 1-21-77

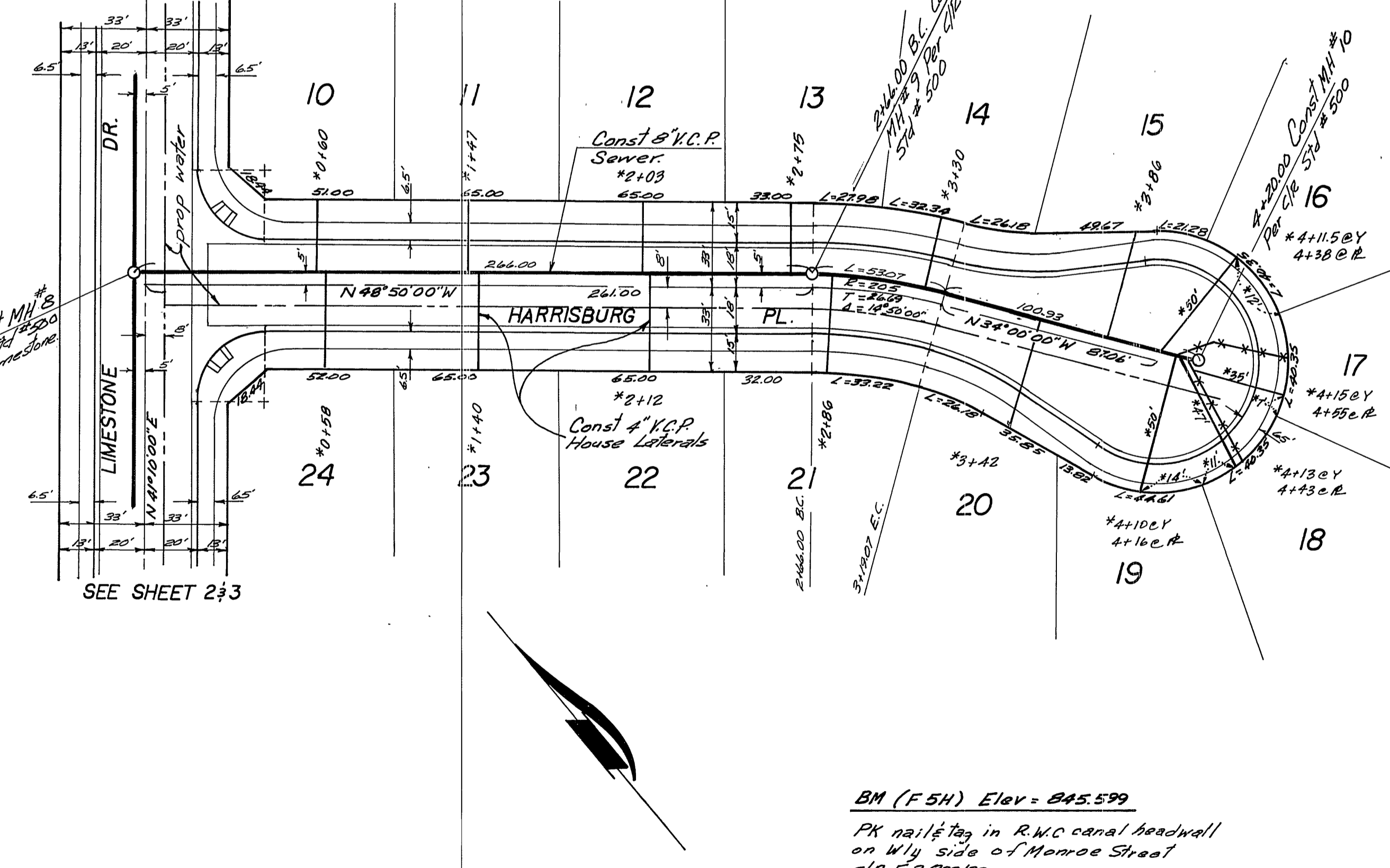
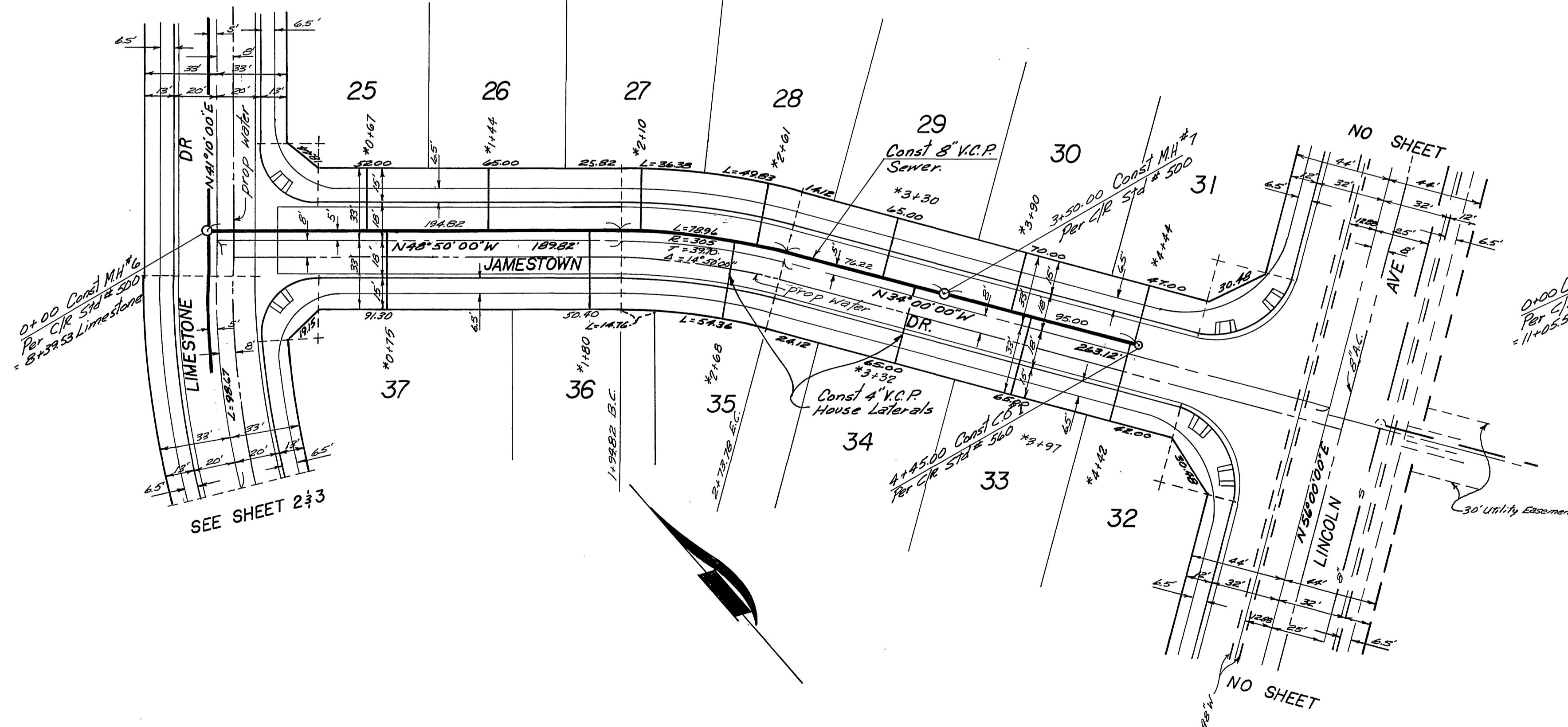
SEWER PLAN PROFILE
 TRACT NO 7873
 LIMESTONE DR

ACCOUNT No.
 DRAWING NUMBER
 S-1066
 SHEET 3 OF 5
 75-161-B



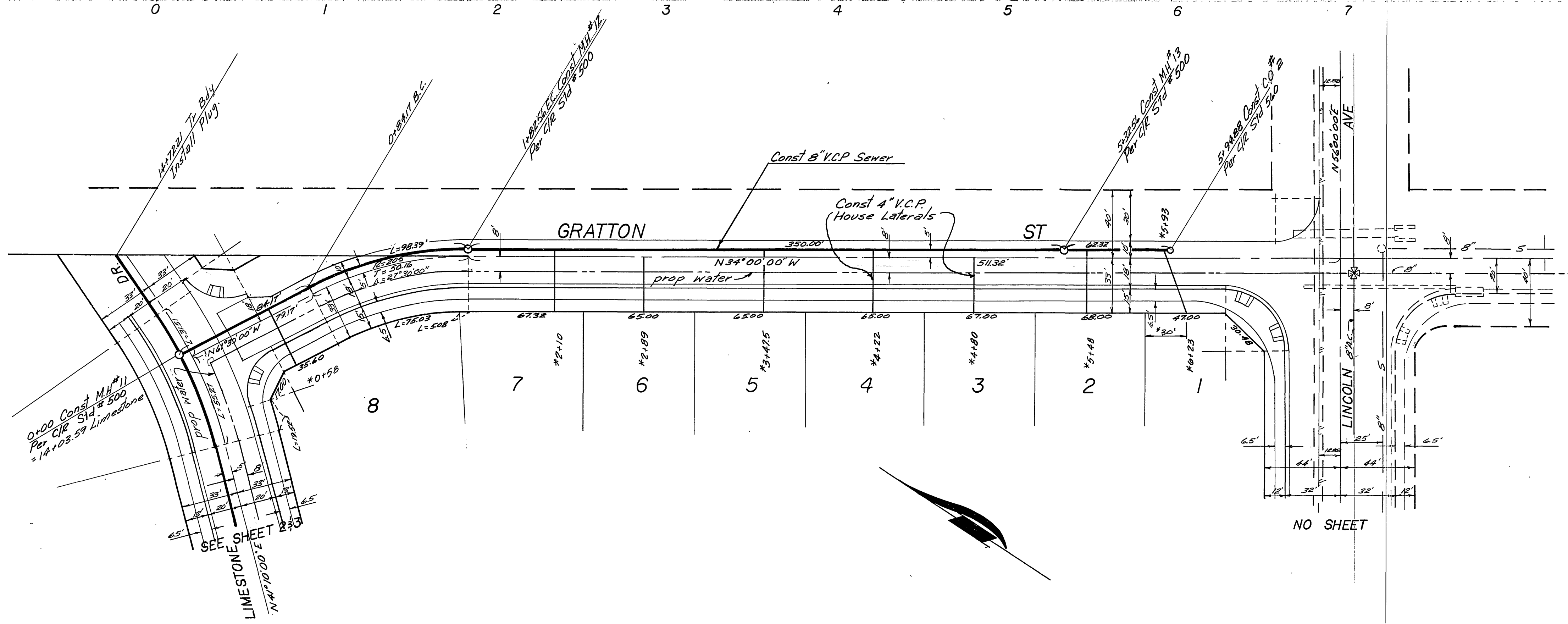
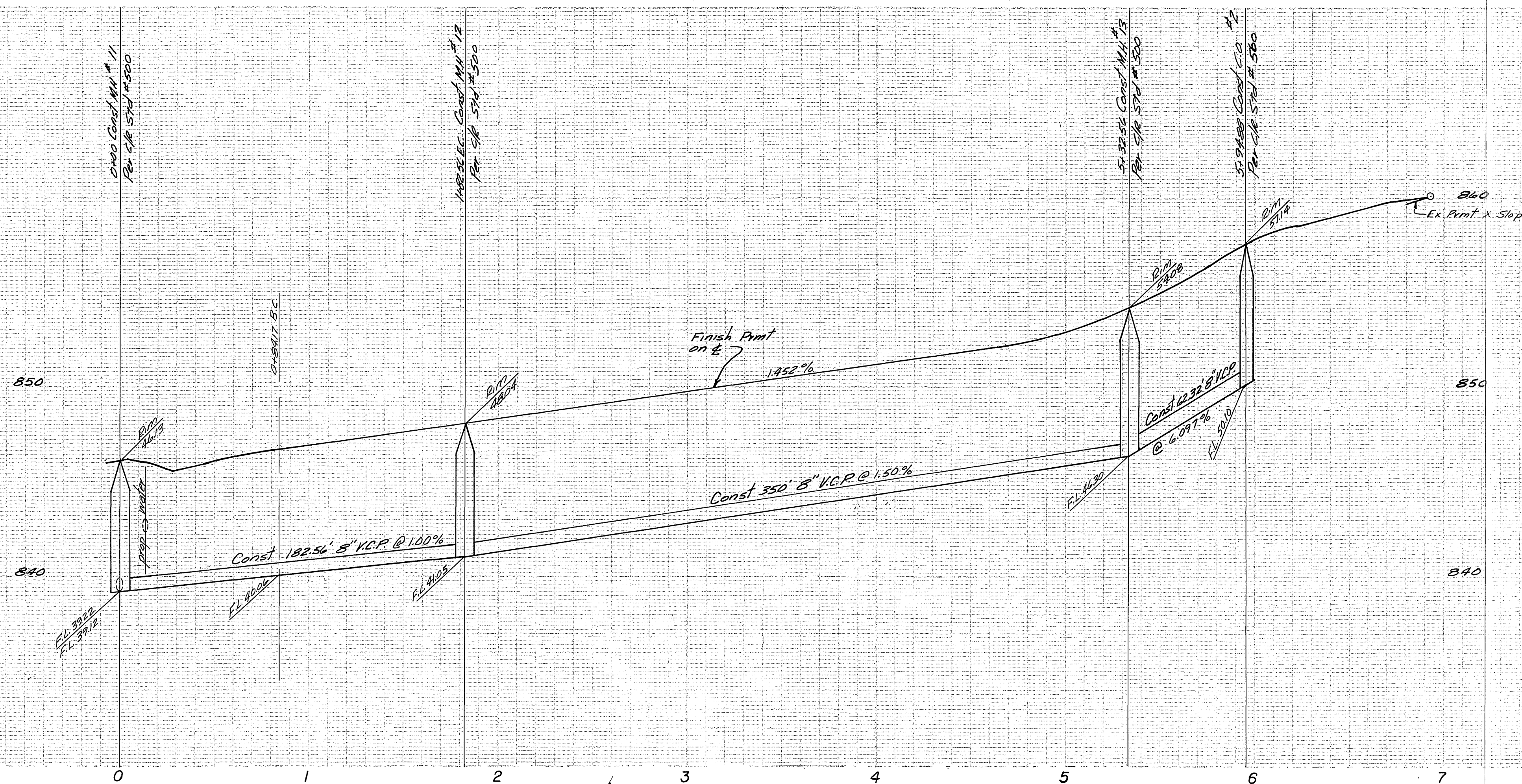
SEE SHEET 3

SEE SHEET 3



BM (F54) Elev = 845.599
 PK 121 1/2 tag in R.M.C canal headwall
 on Wly. side of Monroe Street
 C.I.R. F.B. 837.33.

ALBERT A. WEBB ASSOCIATES CIVIL ENGINEERS RIVERSIDE, CALIFORNIA APPROVED BY: <i>[Signature]</i> DATE: 8/7/76 R.E. No. 2872 <small>W.O. 75-161 FOR Woodhaven Enterprises F.B. 1924</small>		Approved By: <i>[Signature]</i> DATE: 12/30/76 Chief of Utilities Engineering - Water		CITY OF RIVERSIDE, CALIFORNIA PUBLIC WORKS DEPARTMENT APPROVED BY: <i>[Signature]</i> DATE: 1-31-77 DIRECTOR OF PUBLIC WORKS <small>DATE: 1-31-77</small>		SEWER PLAN & PROFILE TRACT NO 7873 JAMESTOWN DR HARRISBURG PL. SCALE: HORIZ 1"=40' VERT 1"=4' <small>*AS BUILT 8-77 KET</small>		ACCOUNT No. DRAWING NUMBER S-1066 SHEET 4 OF 5 <small>75-161-B</small>	
---	--	--	--	--	--	---	--	---	--



BM (F.54) Elev = 845.599
 PK nail & tag in RWC canal headwall
 on Wly side of Monroe Street
 c/c F.B. 839/83.
 *AS BUILT 8-77 KET

ALBERT A. WEBB ASSOCIATES
 CIVIL ENGINEERS
 RIVERSIDE, CALIFORNIA
 APPROVED BY *[Signature]* DATE 8/9/76
 R.E. No. 2872

MARK	REVISIONS	APPR. DATE

Approved By *[Signature]* 12-30-76
 Chief of Utilities Engineer, Water
 CITY OF RIVERSIDE, CALIFORNIA
 PUBLIC WORKS DEPARTMENT
 APPROVED BY *[Signature]*
 PRINCIPAL ENGINEER
 PARK DEPARTMENT
 TRAFFIC DIVISION
 CHIEF PUB. WKS. ENGR.
 DATE 1-31-77

SEWER PLAN & PROFILE
 TRACT NO 7873
 GRATTON ST
 SCALE: HORIZ 1" = 40' VERT 1" = 4'

ACCOUNT No.
 DRAWING NUMBER
 S-1066
 SHEET 5 OF 5
 75-161-B