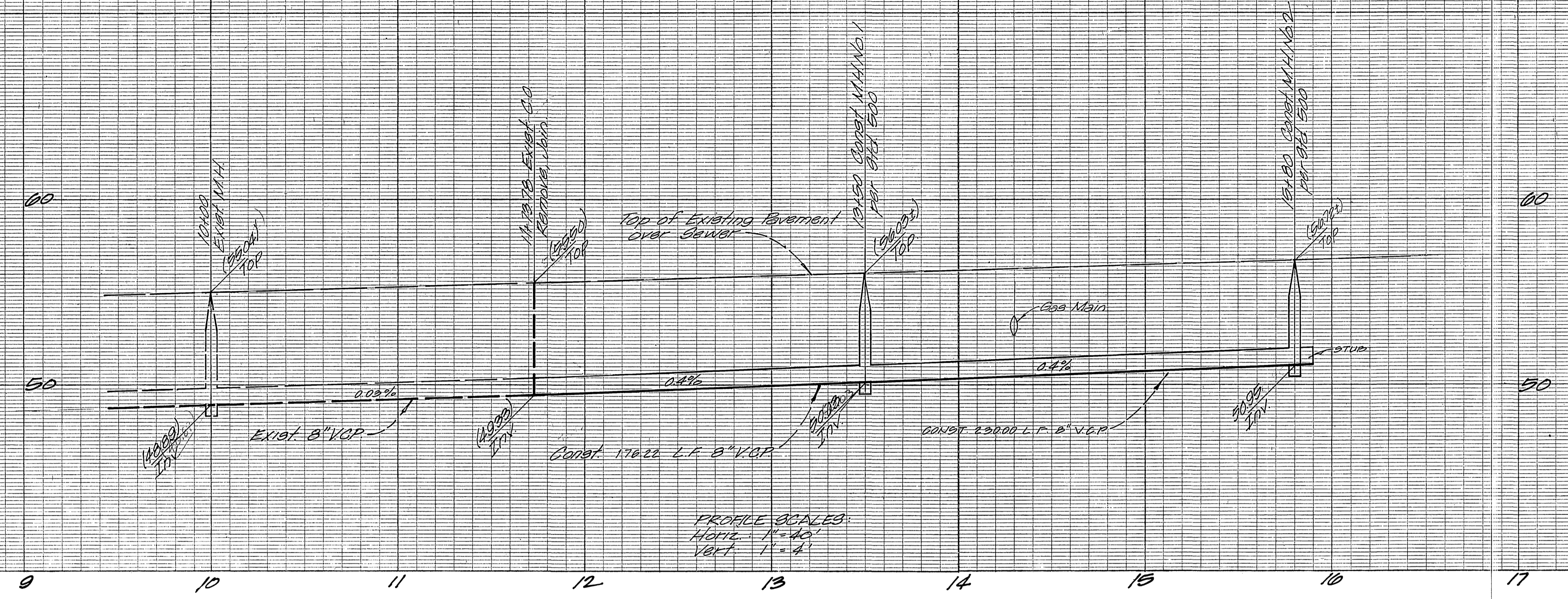
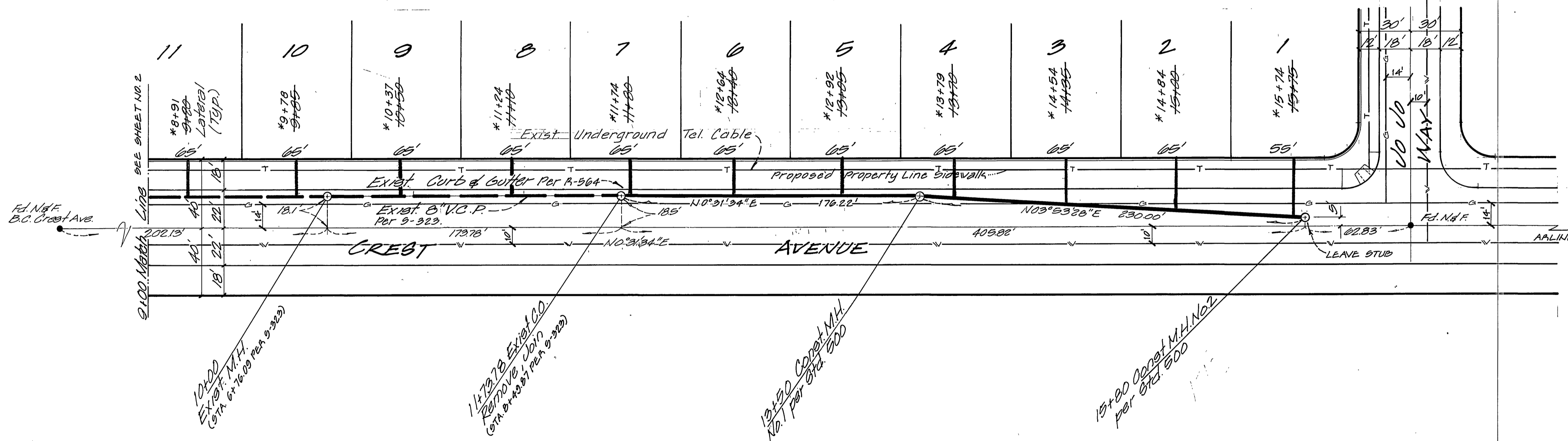


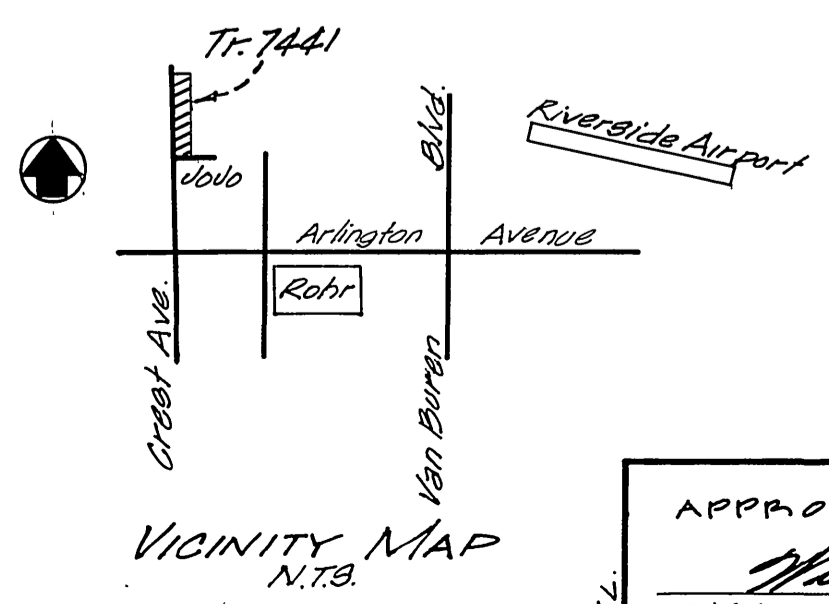
BENCH MARK:
 Pk. nail in center of Northeast curb.
 return to Arlington & Great Ave.
 ELEV. = 769.72 F.B. 704/41



PROFILE SCALES:
 Horiz. 1" = 40'
 Vert. 1" = 4'



- GENERAL NOTES:**
1. Construction shall be in conformance with Standard Specifications for Public Works Construction, 1970 Edition, and the City of Riverside Standard Drawings.
 2. It shall be the responsibility of the Contractor to clear the Right of Way in accordance with the provisions of law as it affects each utility, irrigation line appurtenances and at no cost to the City.
 3. Laterals to be 4" and extended to property line.
 4. Prior to construction of sewer, the Contractor is to expose existing sewer and contact the Engineer for verification of existing elevations.
 5. The sewer Contractor is to adjust manhole covers to final grades after paving is completed.
 6. A plug shall be installed and will remain in place where the new sewer connects to the existing sewer until such time that the new sewer is accepted by the City.
 7. Water and Sewer laterals shall not be in same trench.



APPROVED BY: *[Signature]* 2-1-77
 CHIEF UTILITIES ENGINEER, WATER

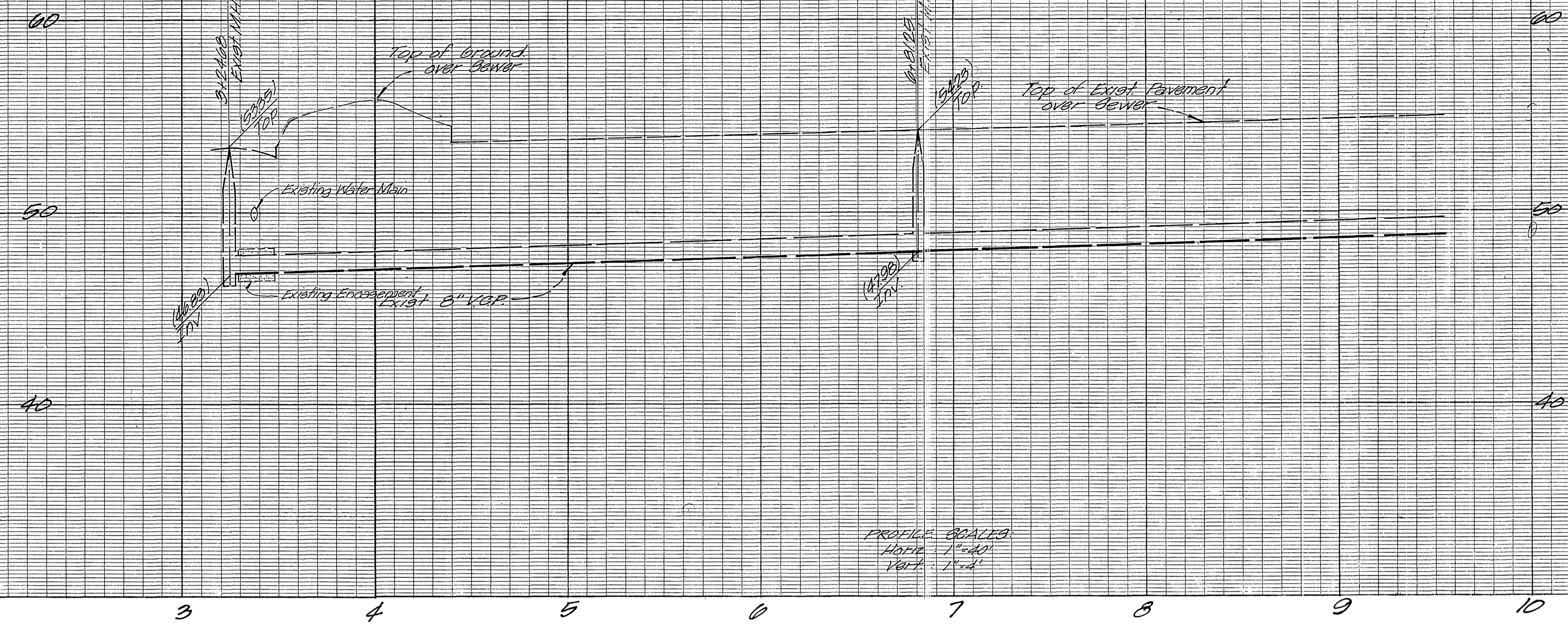
MAXWELL, BROWN & MULLINS
 planning engineering surveying
 SAN BERNARDINO, CALIFORNIA
 PHILIP Z. BROWN C.E. 18679

J.O.
 F.B.
 CHECKED BY:
 DRAWN BY:
 DESIGNED BY: DRAWN BY: CHECKED BY: DATE

CITY OF RIVERSIDE, CALIFORNIA
 PUBLIC WORKS DEPARTMENT
 APPROVED BY: *[Signature]* DATE 2-1-77
 PRINCIPAL ENGINEER
 TRAFFIC DIVISION
 CHIEF PUB. WKS. ENGR.

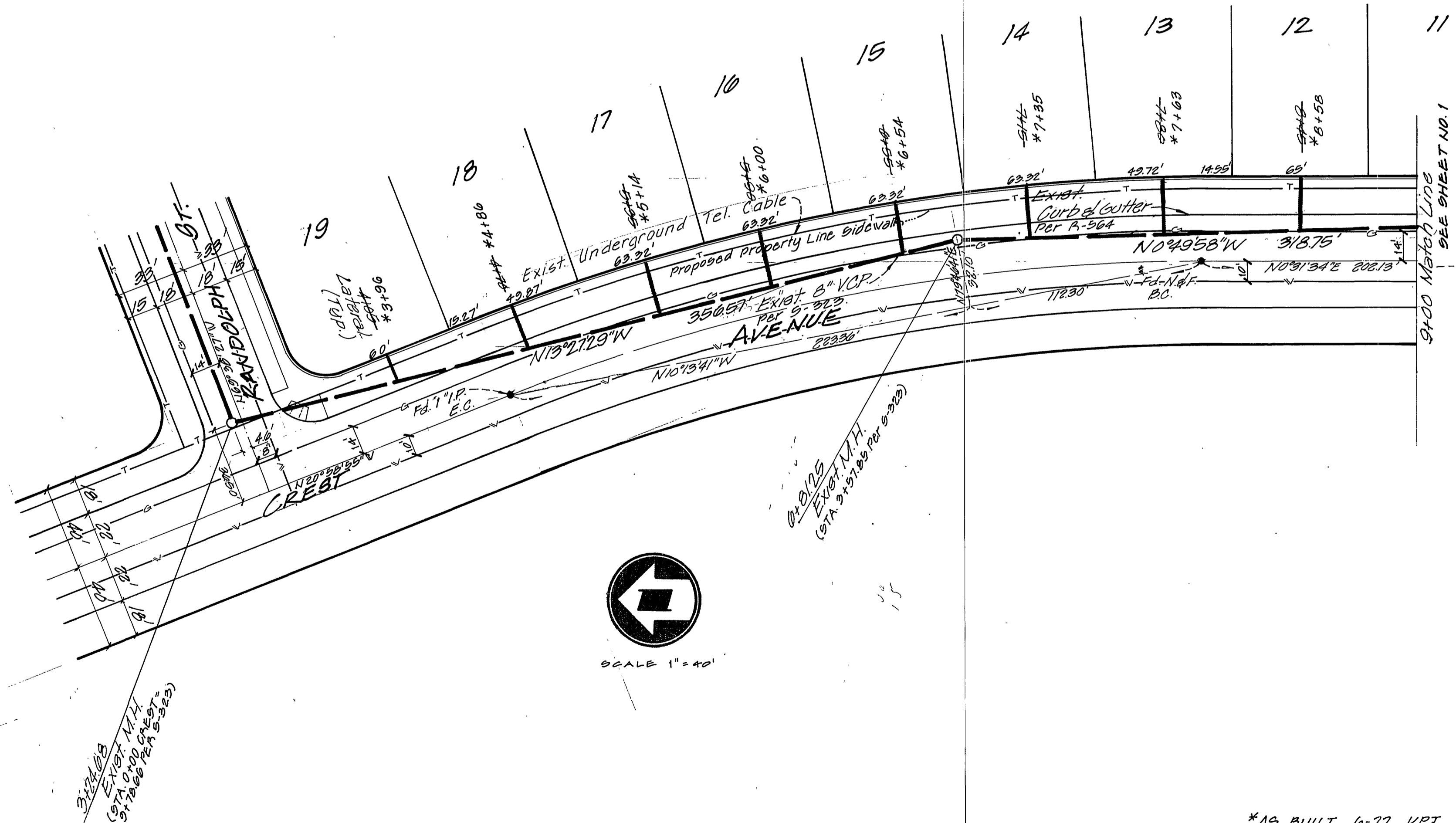
*AS BUILT 6-77 KPT
 INDEXED 2A
 ACCOUNT No. DRAWING NUMBER
 TRACT No. 7441
 CREST AVENUE
 SHEET 1 OF 2
 SCALE: Horiz. 1" = 40' Vert. 1" = 4'

BENCH MARK
 P.K. nail in center of Northeast curb
 return @ Arlington & Great Aves.
 ELEV. 709.23 (V.B. 704.41)



PROFILE SCALES
 Horiz. 1"=40'
 Vert. 1"=4'

SEE SHEET 1 FOR
 GENERAL NOTES



SCALE 1"=40'

*AS BUILT 6-77 KPT

APPROVED BY:
Halley Hylan
 CHIEF UTILITIES ENGINEER, WATER
 2-1-77
 DATE

**MAXWELL,
 BROWN &
 MULLINS**
 SAN BERNARDINO, CALIFORNIA
 planning
 engineering
 surveying

J.O.
 F.B.
 CHECKED BY:
 DRAWN BY:

MARK	REVISIONS	APPR.	DATE
DESIGNED BY	DRAWN BY	CHECKED BY	DATE

CITY OF RIVERSIDE, CALIFORNIA
 PUBLIC WORKS DEPARTMENT
 APPROVED BY: *John H. ...*
 PRINCIPAL ENGINEER
 PARK DEPARTMENT
 TRAFFIC DIVISION
 CHIEF PUB. WKS. ENGR.
 DATE: 2-15-77

SEWER PLANS
 TRACT No. 7441
 CREST AVENUE
 SCALE: Horiz.: 1"=40' Vert.: 1"=4'

ACCOUNT No.
 DRAWING NUMBER
 S-1067
 SHEET 2 OF 2