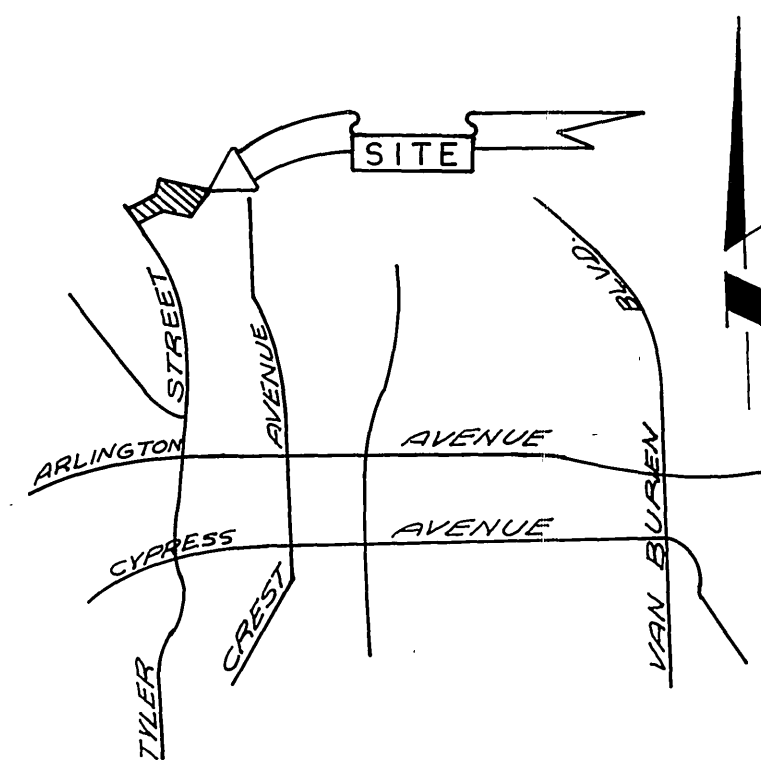


# GENERAL NOTES

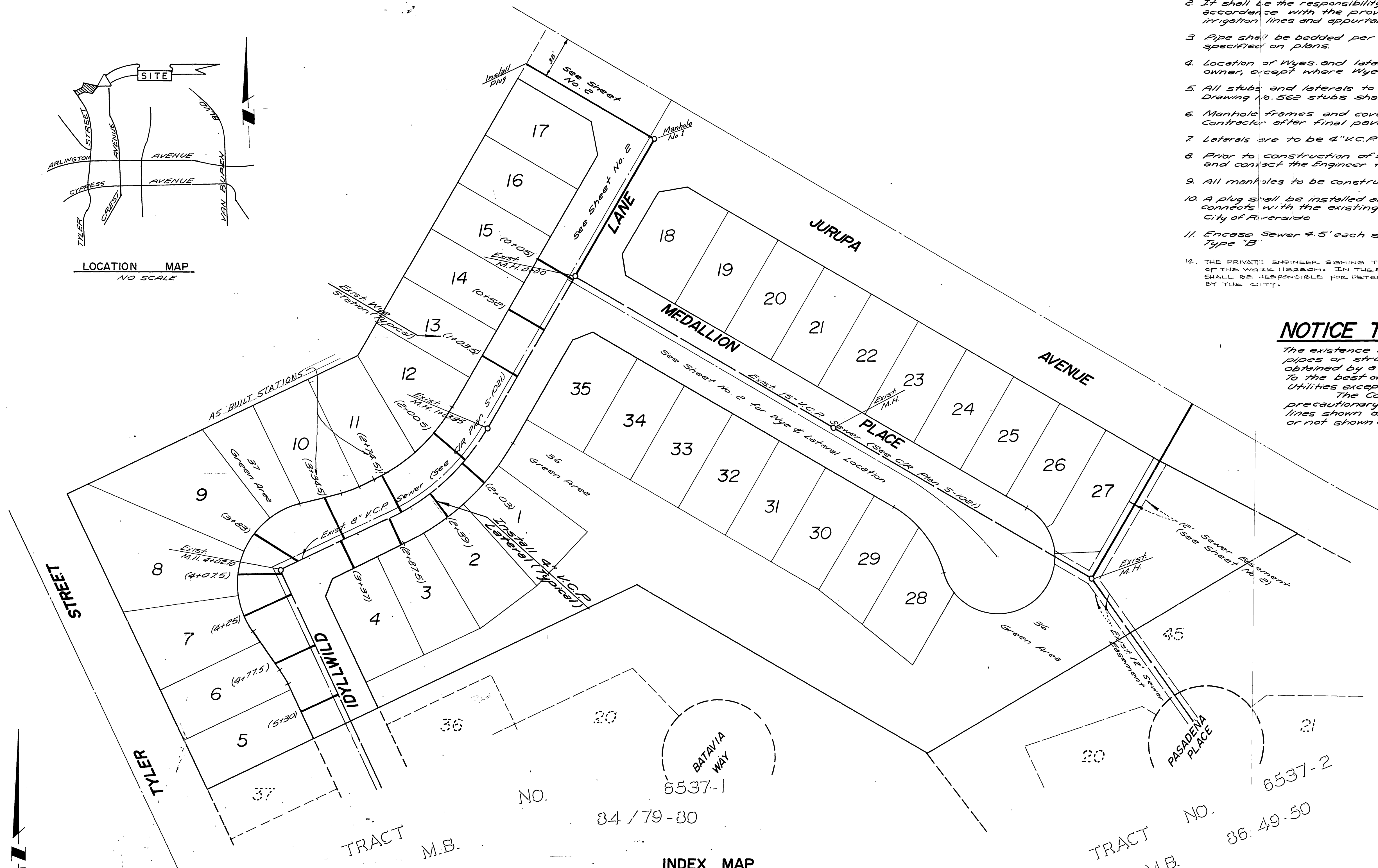
1. Construction shall be in accordance with the Standard Specifications for Public Works construction, 1976, Edition, and City of Riverside Standard Drawings.
2. It shall be the responsibility of the Contractor to clear the right of way in accordance with the provisions of the law as it affects each utility including irrigation lines and appurtenances and at no cost to the City.
3. Pipe shall be bedded per Case I, Standard Drawing No. 452, unless otherwise specified on plans.
4. Location of Wyes and laterals to be determined at the direction of the owner, except where Wyes exist, see sheets 1, 2.
5. All stubs and laterals to be constructed in accordance with standard Drawing No. 562 stubs shall be plugged and capped.
6. Manhole frames and covers to be set as noted in profile by Sewer Contractor after final paving of street.
7. Laterals are to be 4" K.C.P. and extended to the property line.
8. Prior to construction of sewer, contractor is to expose existing sewer and contact the Engineer for verification of existing elevation.
9. All manholes to be constructed per Standard No. 500.
10. A plug shall be installed and will remain in place where the New sewer connects with the existing Sewer. Until the new sewer is accepted by the City of Riverside.
11. Encase Sewer 4.5' each side of water line per Std. DWG. C.W.D. 023 Type "B".
12. THE PRIVATE ENGINEER SIGNING THESE PLANS IS RESPONSIBLE FOR THE ACCURACY AND ACCEPTABILITY OF THE WORK HEREON. IN THE EVENT OF DISCREPANCIES ARISING DURING CONSTRUCTION, THE PRIVATE ENGINEER SHALL BE RESPONSIBLE FOR DETERMINING AN ACCEPTABLE SOLUTION AND REVISING THE PLANS FOR APPROVAL BY THE CITY.

## NOTICE TO CONTRACTOR:

The existence and location of underground Utility pipes or structures shown on these plans are obtained by a search of the available records. To the best of our knowledge, there are no existing Utilities except as shown on these plans. The Contractor is required to take due precautionary measures to protect the Utility lines shown and any other lines not of record or not shown on these plans.



LOCATION MAP  
NO SCALE



INDEX MAP  
1" = 50'

### BENCH MARK:

R.R. Nail in East Curb on Tyler Street, on E. Galena Avenue Produced per City of Riverside 153.7061 Elevation 778.09 Adjusted to CIP Datum Elev. 778.09 in Sept. 1973

APPROVED BY  
*Handwritten Signature*  
Chief Utilities Engineer, Water  
7-21-77  
Date

ALBERT A. WEBB ASSOCIATES  
CIVIL ENGINEERS  
RIVERSIDE, CALIFORNIA  
APPROVED BY *L.O. Hancock* DATE 12-12-76  
R.E. No. 16056

MARK	REVISIONS	APPR.	DATE

CITY OF RIVERSIDE, CALIFORNIA  
PUBLIC WORKS DEPARTMENT  
BY DATE  
PRINCIPAL ENGINEER 7/21/77  
PARK DEPARTMENT  
TRAFFIC DIVISION  
CHIEF PUB. WKS. ENGR. 7/21/77

SEWER PLAN AND PROFILE  
TRACT NO. 6537  
INDEX MAP  
SCALE: AS SHOWN

ACCOUNT NO.  
DRAWING NUMBER  
S-1068  
SHEET 1 OF 2  
76-172-B

\*46 BUILT 8-78 KPT

INDEXED R.R.

760

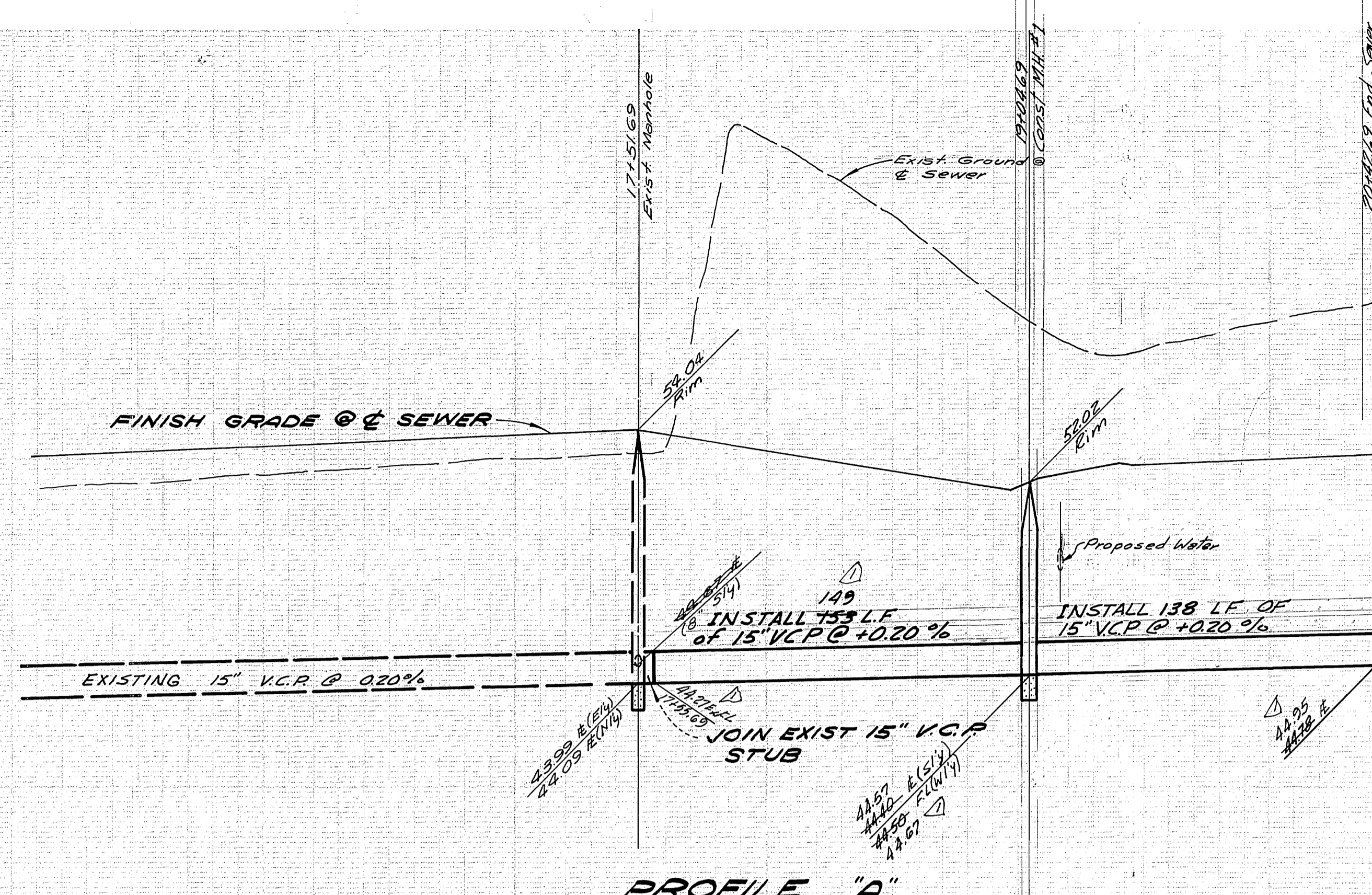
750

740

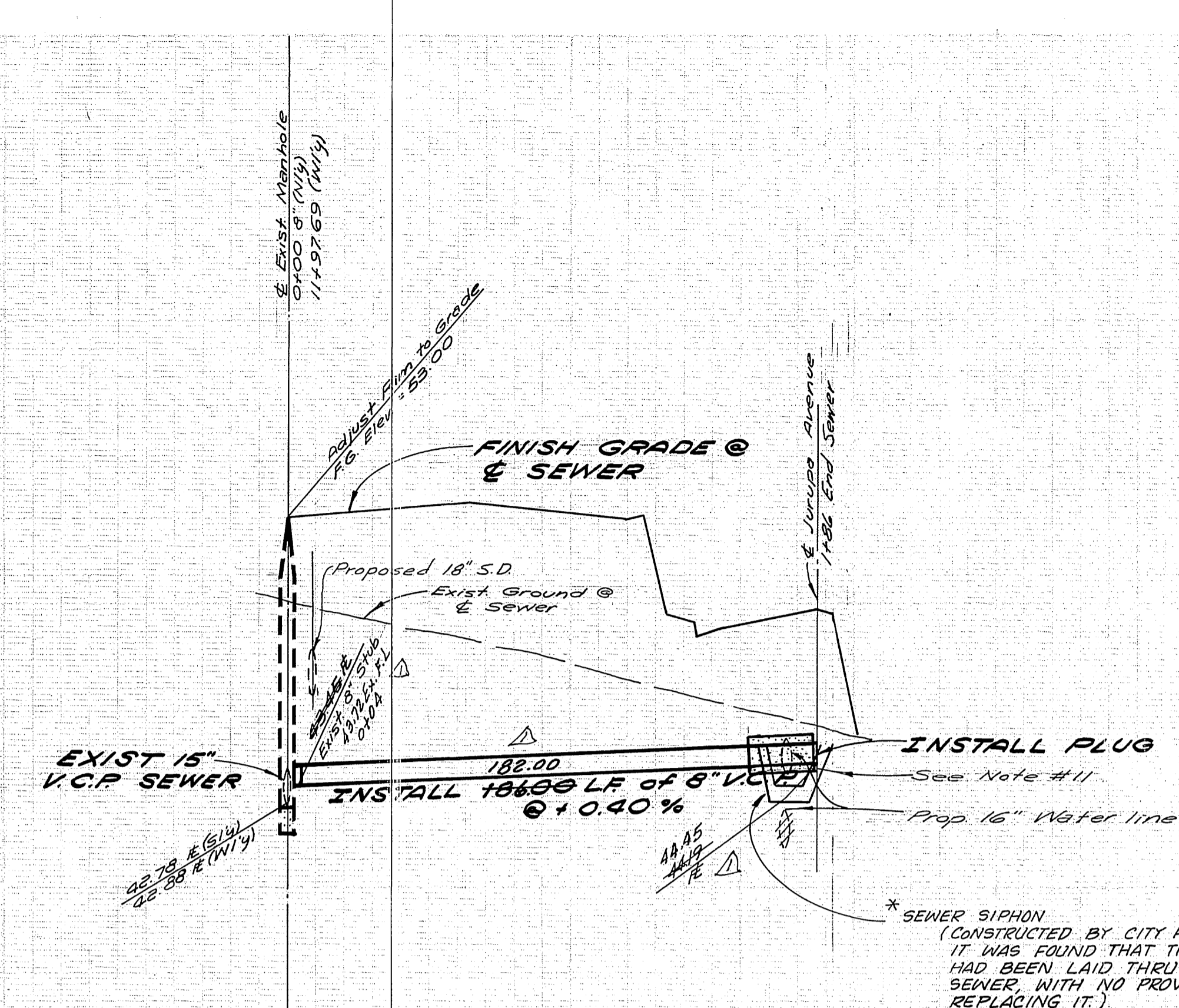
760

750

740

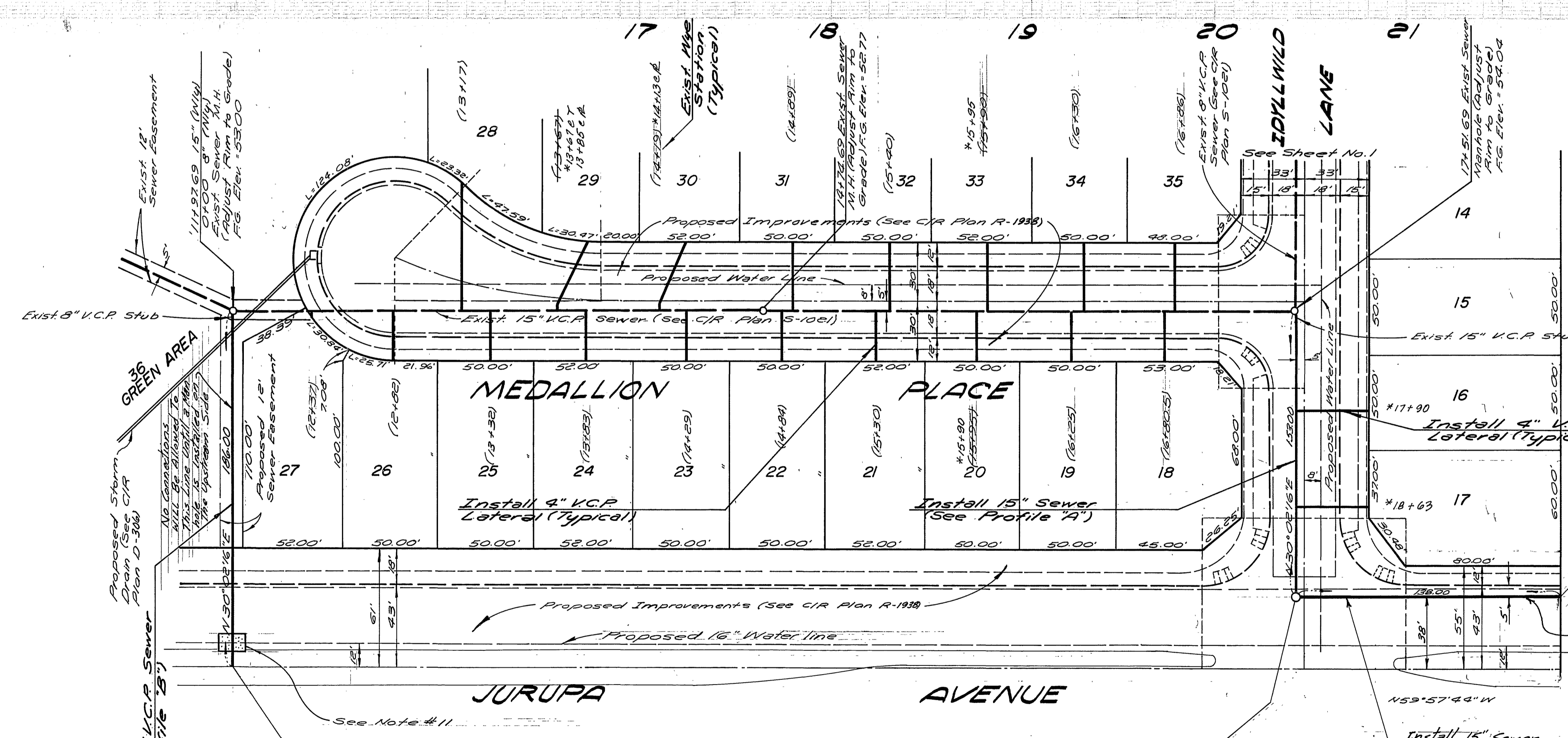


PROFILE "A"



PROFILE "B"

NOTE:  
See Sheet No. 1 for General Notes



SEE 5-1143  
No Connections will be allowed  
to this Line until a Manhole is  
Installed on the Upstream End.

**BENCH MARK:**  
PK Nail in East Curb on Tyler Street, on  
& Gaylord Avenue Produced, per City of  
Riverside F.B. 706/1 Elev. 778.21 (Adjusted  
to C.I.R. Datum Elev. 778.09 in Sept. 1973)

\*AS BUILT 8.0.84 BKT!

<b>ALBERT A. WEBB ASSOCIATES</b> CIVIL ENGINEERS RIVERSIDE, CALIFORNIA		<b>CITY OF RIVERSIDE, CALIFORNIA</b> PUBLIC WORKS DEPARTMENT		<b>SEWER PLAN AND PROFILE</b> TRACT 6537 MEDALLION PLACE IDYLLWILD LANE JURUPA AVENUE - 12' EASEMENT		ACCOUNT No. <b>5-1068</b> DRAWING NUMBER <b>2 OF 2</b>	
APPROVED BY: <i>[Signature]</i> Chief Utilities Engineer, Water		APPROVED BY: <i>[Signature]</i> DATE: 10-12-76 R.E. No. 16058		APPROVED BY: <i>[Signature]</i> DATE: 7-26-77 DIRECTOR OF PUBLIC WORKS		SCALE: Horiz. 1"=40'; Vert. 1"=8' DESIGNED BY: <i>[Signature]</i> DRAWN BY: <i>[Signature]</i> CHECKED BY: <i>[Signature]</i>	