

RIVERSIDE CITY OF RIVERSIDE CALIFORNIA



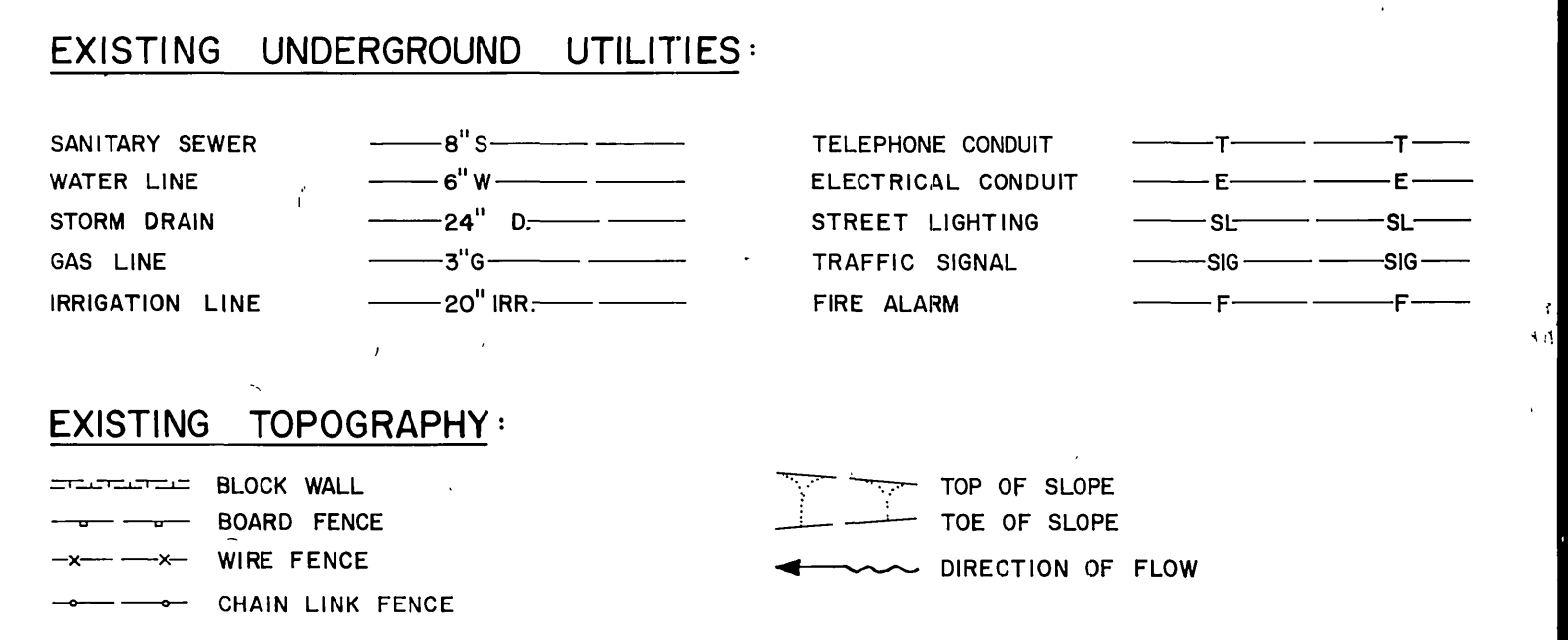
PUBLIC WORKS DEPARTMENT

LA SIERRA AVENUE SEWER LATERALS AND MANHOLE ADDITIONS From Hole to Gramercy

CONSTRUCTION LEGEND



EXISTING UNDERGROUND & TOPOGRAPHY LEGEND

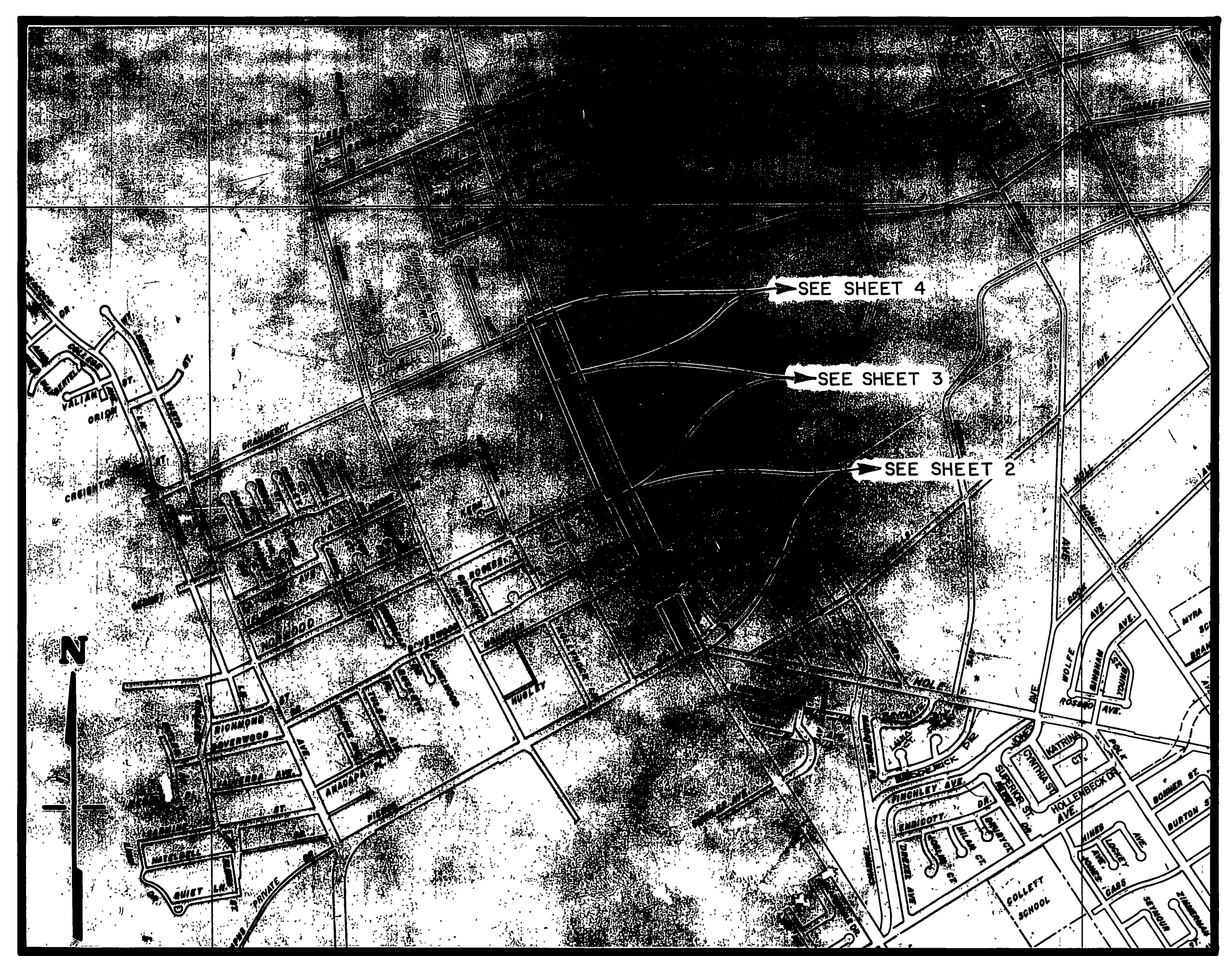


SPECIFIC CONSTRUCTION NOTES

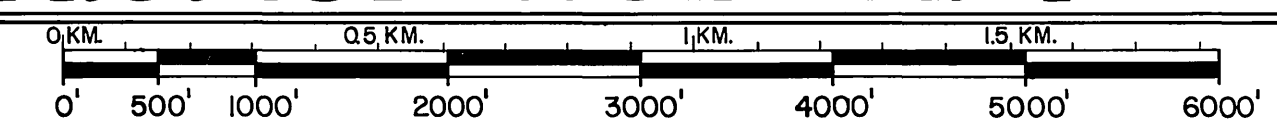
- NUMBERS ABOVE 100 IN A HEXAGON ON THE PLAN REFER TO THE RESPECTIVE STANDARD DRAWING AND SHALL BE CONSTRUCTED ACCORDINGLY, UNLESS MODIFICATIONS ARE NOTED ON THE PLAN OR COVER SHEET BELOW. ANY NUMBER SHOWN BELOW THE STANDARD DRAWING NUMBER INDICATES THE SPECIFIC ALTERNATE TO BE CONSTRUCTED.

GENERAL CONSTRUCTION NOTES

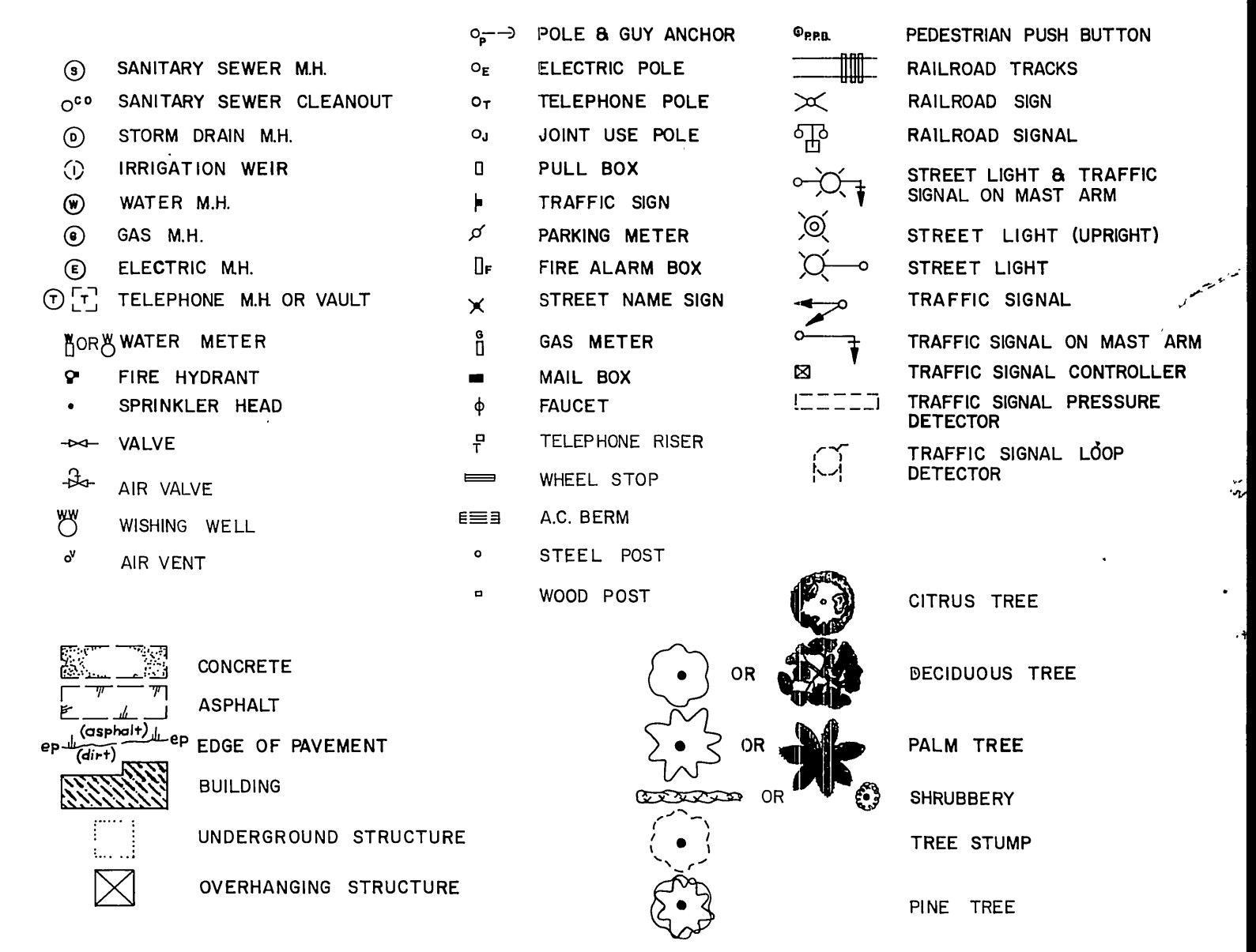
- STATIONING IS ALONG CONSTRUCTION CENTER LINE OF LA SIERRA AVENUE PER R-1512
- ELEVATIONS AT LATERALS ARE ON THE EXISTING 8" SEWERS ASSUMING STRAIGHT LINE AND GRADE BETWEEN MANHOLES.
- FOR CONNECTIONS TO THE EXISTING SEWER LINE SEE SPECIAL PROVISIONS.



PROJECT LOCATION PLAN



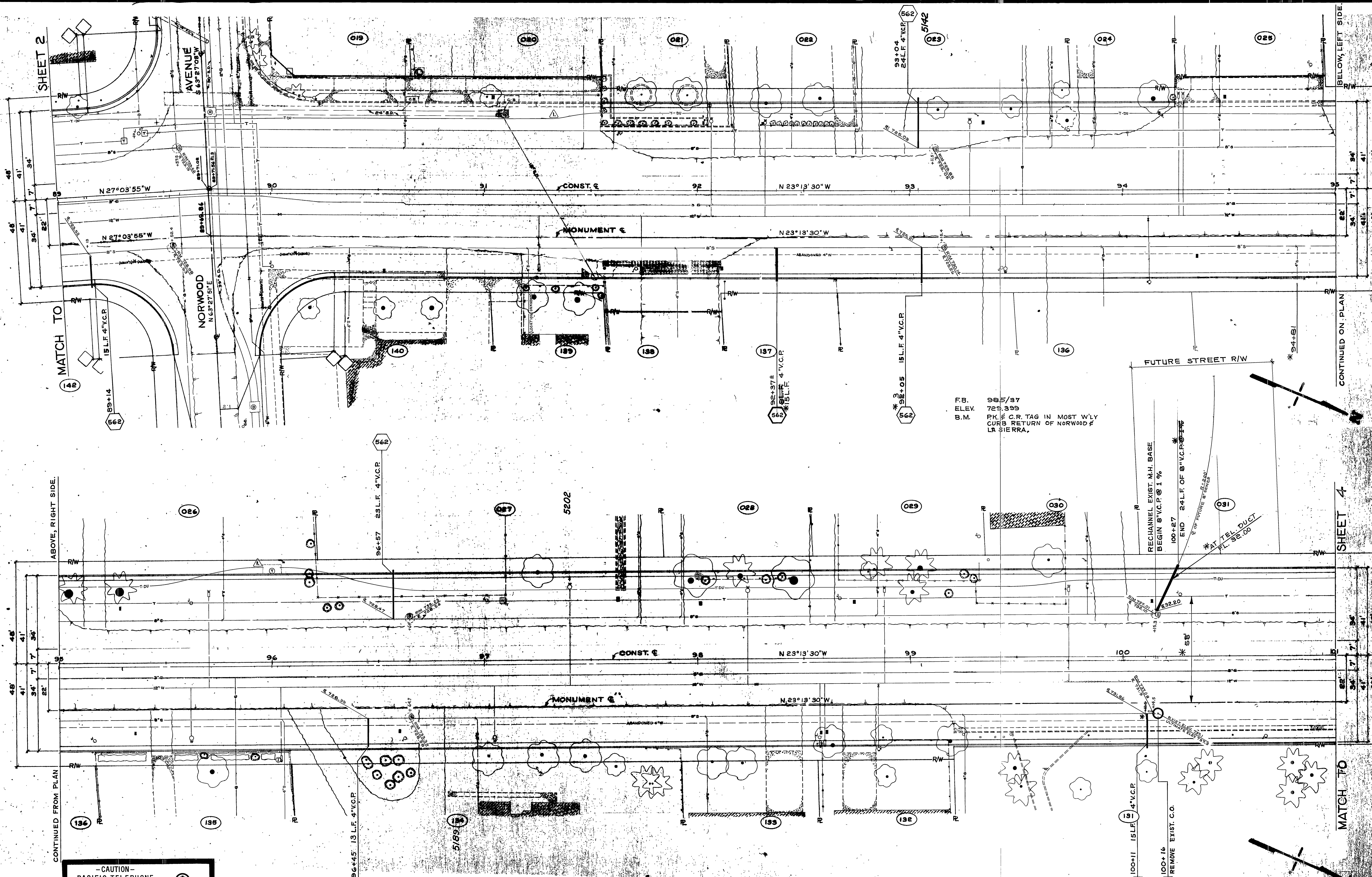
SCALE 1" = 1000'



-CAUTION-
PACIFIC TELEPHONE
CABLES UNDERGROUND
BEFORE EXCAVATING
CALL COLLECT

Orange County	714-633-0811	714-547-6606
Riverside County	714-684-0071	714-547-6606
Inyo County	714-684-0071	714-547-6606
San Bernardino County	714-684-0071	714-547-6606
Los Angeles County	213-621-3111	24 HOUR SERVICE
Ventura County	213-621-3111	24 HOUR SERVICE
San Diego County	714-298-0595	714-232-0027

<p>CITY OF RIVERSIDE DOMESTIC SYSTEM</p> <p>DESIGNED BY: <i>W. J. S. J.</i> DATE: 9-28-77</p> <p>CHIEF UTILITIES ENGINEER, WATER</p>	<p>CITY OF RIVERSIDE, CALIFORNIA PUBLIC WORKS DEPARTMENT</p> <p>APPROVED BY: <i>[Signature]</i> DATE: 11-10-77</p> <p>PRINCIPAL ENGINEER TRAFFIC DIVISION</p>	<p style="text-align: center;">LA SIERRA AVENUE SEWER LATERALS AND MANHOLE ADDITIONS From Hole to Gramercy</p> <p style="text-align: right;">ACCOUNT No. 32577-576-00 DRAWING NUMBER S-1069 SHEET 1 OF 4</p>
--	---	--



SHEET 2

MATCH TO

ABOVE, RIGHT SIDE.

CONTINUED FROM PLAN

CONTINUED ON PLAN

SHEET 4

MATCH TO

-CAUTION-
PACIFIC TELEPHONE
CABLES UNDERGROUND
BEFORE EXCAVATING
CALL COLLECT:
 7:30 A.M. to 5 P.M. & Holidays
 Orange County 714-633-0811 714-547-6606
 Riverside County 714-694-0071 714-547-6606
 Inyo County 714-694-0071 714-547-6606
 San Bernardino County 714-694-0071 714-547-6606
 Los Angeles County 213-621-3111
 Ventura County 213-621-3111
 San Diego County 714-298-0595 714-232-0027
24 HOUR SERVICE
FOR FREE CABLE LOCATING SERVICE

CITY OF RIVERSIDE DOMESTIC SYSTEM
Wally Stahl 9-22-77
 CHIEF UTILITIES ENGINEER, WATER DATE

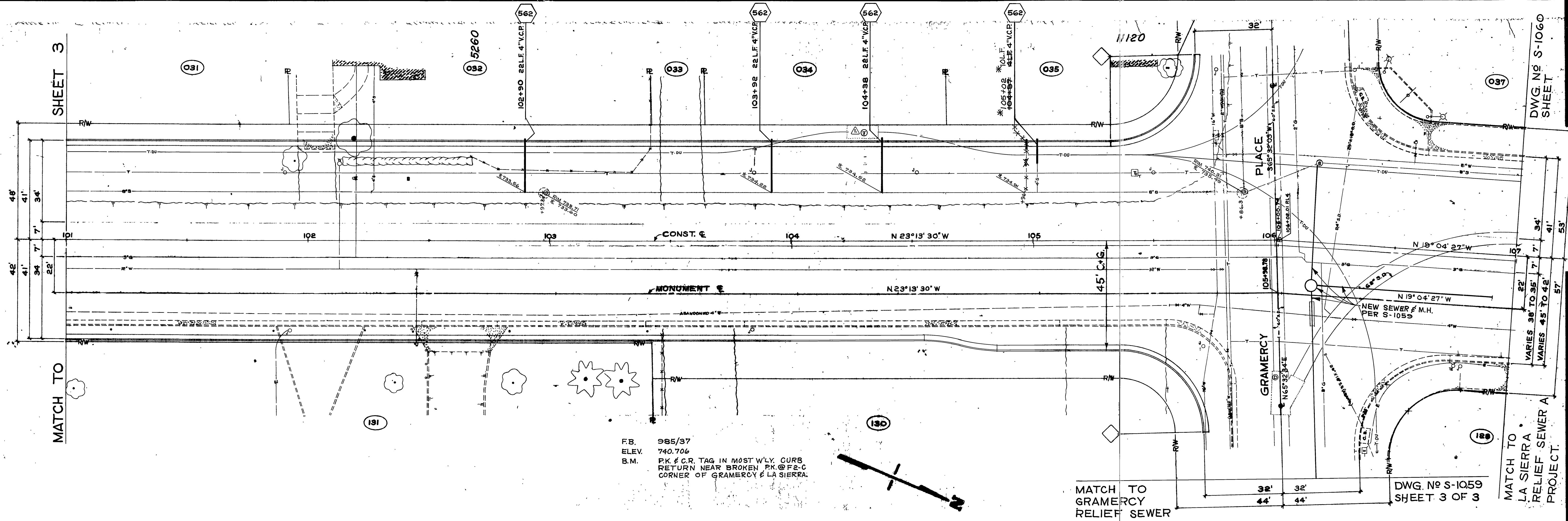
SHORTEN SEWER LATERAL ³ & ADDED TELEPHONE DUCT & MANHOLES.		CITY OF RIVERSIDE, CALIFORNIA PUBLIC WORKS DEPARTMENT	
APPROVED BY	BY DATE	APPROVED BY	BY DATE
PRINCIPAL ENGINEER		PUBLIC WORKS DIRECTOR	
PARK DEPARTMENT			
TRAFFIC DIVISION			
CHIEF PUB. WKS. ENGR.			
DESIGNED BY	DRAWN BY	CHECKED BY	DATE
			11-10-77

LA SIERRA AVENUE
 SEWER LATERALS AND
 MANHOLE ADDITIONS
 From Hole to Gramercy

ACCOUNT No. 32-577-576-00
 DRAWING NUMBER
S-1069
 SHEET 3 OF 4

SCALE: 1" = 20'

*AS BUILT 7-25-78



F.B. 985/37
 ELEV. 740.706
 B.M. PK. & C.R. TAG IN MOST W'LY CURB
 RETURN NEAR BROKEN PK. @ F2-C
 CORNER OF GRAMERCY & LA SIERRA.

-CAUTION-
 PACIFIC TELEPHONE
 CABLES UNDERGROUND
 BEFORE EXCAVATING
 CALL COLLECT: 7:30 A.M. to 5 P.M. & Holidays
 Orange County 714-633-0811 714-547-6606
 Riverside County 714-684-0071 714-547-6606
 Inyo County 714-684-0071 714-547-6606
 San Bernardino County 714-684-0071 714-547-6606
 Los Angeles County 213-621-3111 24 HOUR SERVICE
 Ventura County 213-621-3111
 San Diego County 714-238-0595 714-232-0027
 FOR FREE CABLE LOCATING SERVICE

CITY OF RIVERSIDE DOMESTIC SYSTEM
 Chief Utilities Engineer, Water
 Date 9-28-77

ADDED TELEPHONE DUCT & MANHOLES	11-10-77
REVISIONS	APPR. DATE
DESIGNED BY <i>DLH</i>	DRAWN BY <i>DLH</i>
CHECKED BY <i>DLH</i>	DATE 11-10-77

CITY OF RIVERSIDE, CALIFORNIA
 PUBLIC WORKS DEPARTMENT
 APPROVED BY *[Signature]*
 PUBLIC WORKS DIRECTOR
 DATE 11-10-77

LA SIERRA AVENUE
 SEWER LATERALS AND
 MANHOLE ADDITIONS
 From Hole to Gramercy

ACCOUNT No. 32-577-576-00
 DRAWING NUMBER
S-1069
 SHEET 4 OF 4

*AS BUILT 7-25-78

SCALE: 1" = 20'