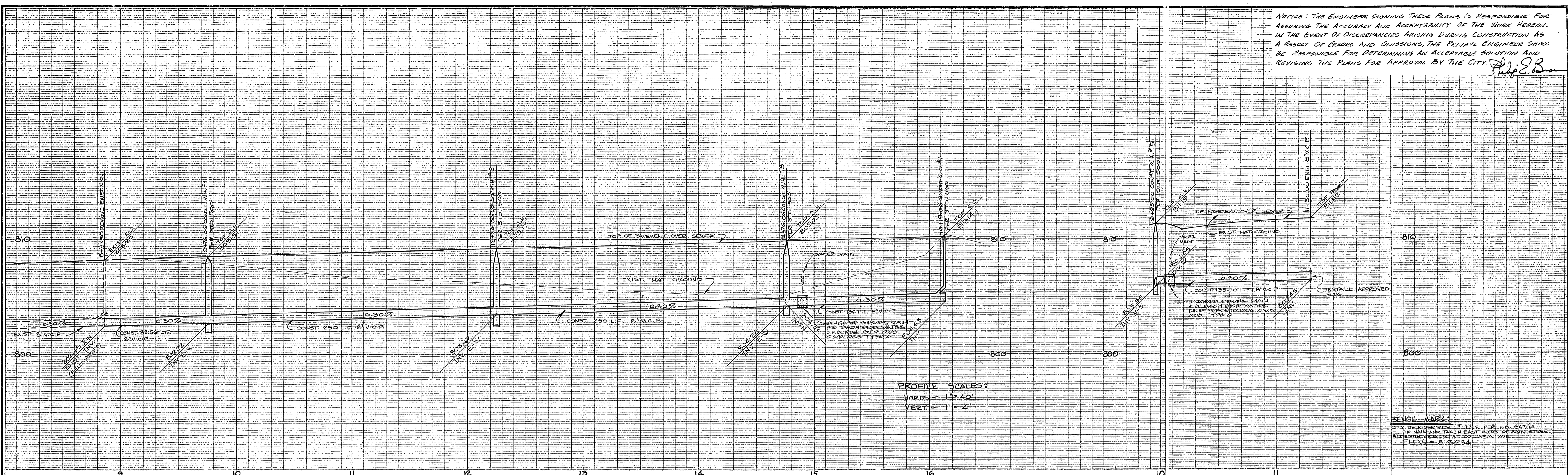
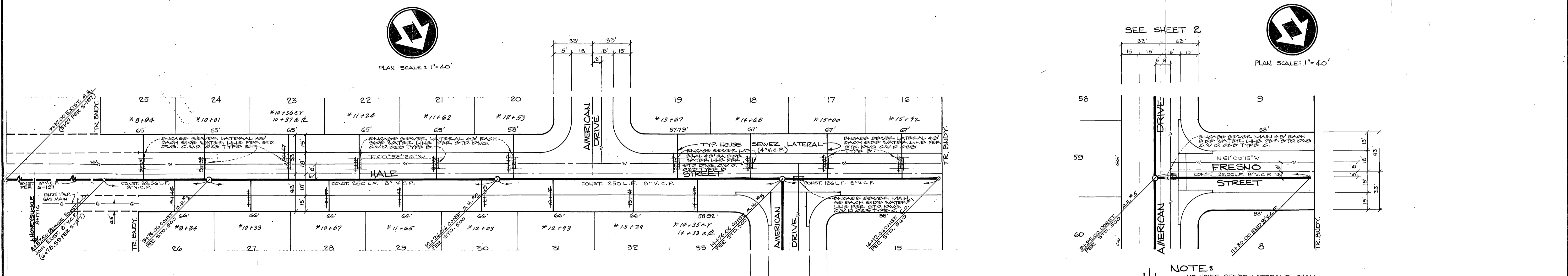


NOTICE: THE ENGINEER SIGNING THESE PLANS IS RESPONSIBLE FOR ASSURING THE ACCURACY AND ACCEPTABILITY OF THE WORK HEREON. IN THE EVENT OF DISCREPANCIES ARISING DURING CONSTRUCTION AS A RESULT OF ERRORS AND OMISSIONS, THE PRIVATE ENGINEER SHALL BE RESPONSIBLE FOR DETERMINING AN ACCEPTABLE SOLUTION AND REVISING THE PLANS FOR APPROVING BY THE CITY.



PROFILE SCALES:  
 HORIZ. - 1" = 40'  
 VERT. - 1" = 4'

BENCH MARK:  
 CITY OF RIVERSIDE #171K PER. F.B. 247/16  
 THE MAIN AND TRAIL IN EAST CORNER OF MAIN STREET,  
 271 SOUTH OF BICK AT COLUMBIA AVE.  
 ELEV. = 813.234



PLAN SCALE: 1" = 40'

PLAN SCALE: 1" = 40'

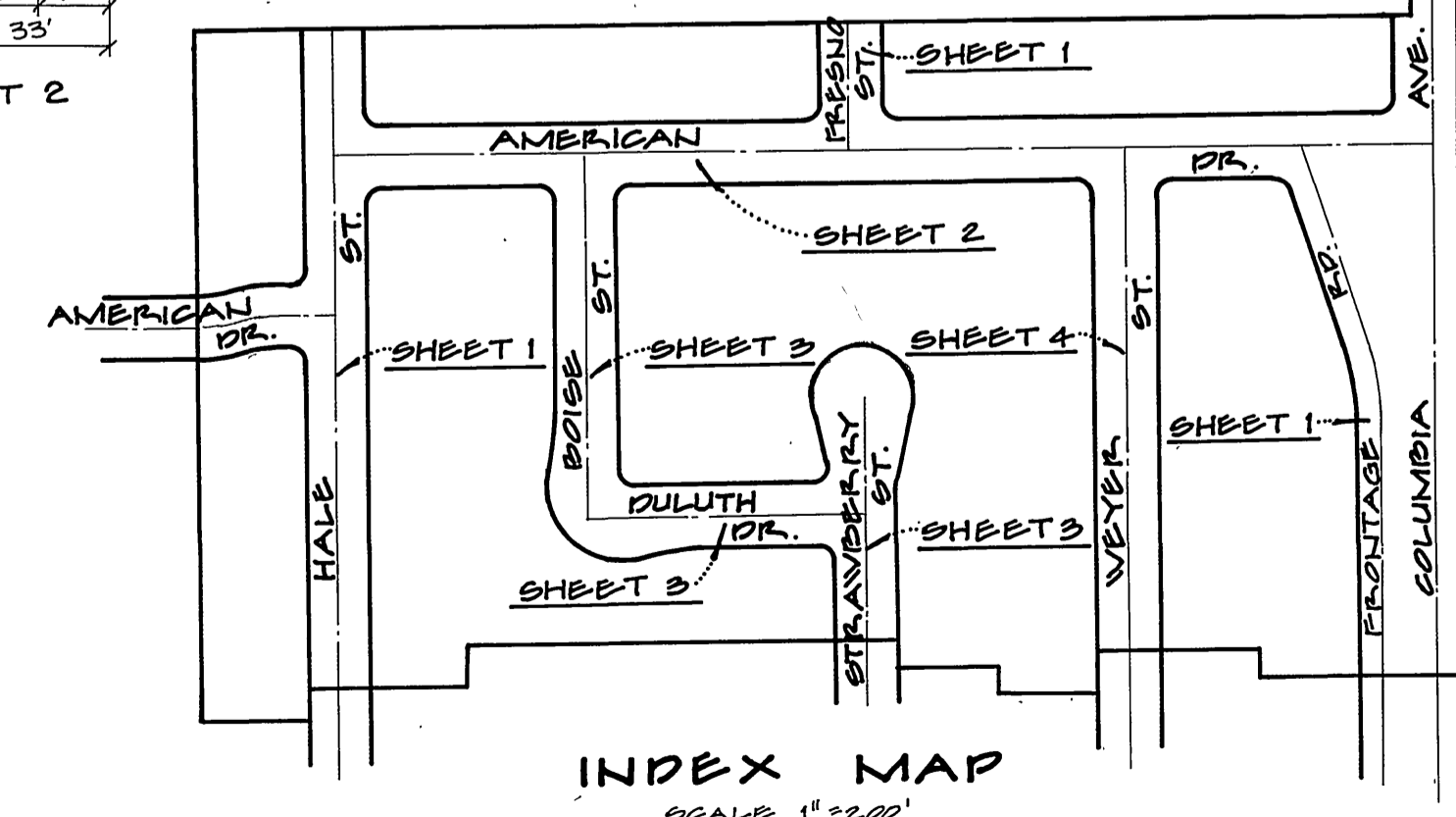
NOTE:  
 FOR EXISTING STREET IMPROVEMENTS  
 ON HALE STREET SEE R-330

**GENERAL NOTES:**

- CONSTRUCTION SHALL BE IN ACCORDANCE WITH STANDARD SPECIFICATIONS FOR PUBLIC WORKS CONSTRUCTION, 1976 EDITION, AND THE CITY OF RIVERSIDE STANDARD DRAWINGS.
- IT SHALL BE THE RESPONSIBILITY OF THE CONTRACTOR TO CLEAR THE RIGHT OF WAY IN ACCORDANCE WITH THE PROVISIONS OF LAW AS IT AFFECTS EACH UTILITY, IRRIGATION LINE APPURTENANCES AND AT NO COST TO THE CITY.
- LATERALS TO BE 4" AND EXTENDED TO PROPERTY LINE.
- PRIOR TO CONSTRUCTION OF SEWER, THE CONTRACTOR IS TO EXPOSE EXISTING SEWER AND CONTACT THE ENGINEER FOR VERIFICATION OF EXISTING ELEVATIONS.
- THE SEWER CONTRACTOR IS TO ADJUST MANHOLE COVERS TO FINAL GRADE AFTER PAVING IS COMPLETED.
- A PLUG SHALL BE INSTALLED AND WILL REMAIN IN PLACE WHERE THE NEW SEWER CONNECTS WITH THE EXISTING SEWER UNTIL SUCH TIME THAT THE NEW SEWER IS ACCEPTED BY THE CITY.

\* CAST IRON PIPE SUBSTITUTED FOR CONC. ENCASEMENT

NOTE:  
 NO HOUSE SEWER LATERALS SHALL  
 BE CONNECTED TO FRESNO STREET SEWER  
 UNTIL MAIN IS EXTENDED OR C.O. OR A.H.  
 IS CONSTRUCTED.



**MAXWELL, BROWN & MULLINS**  
 planning engineering surveying  
 SAN BERNARDINO, CALIFORNIA

J.O. 76-4-5  
 F.B.  
 CHECKED BY: P.E.B.  
 DRAWN BY: A.B.M.  
 DATE: 8-2-76

APPROVED BY:  
*Wally Taylor*  
 CHIEF UTILITIES ENGINEER, WATER  
 DATE: 2-15-77

MARK	REVISIONS	APPR. DATE

DESIGNED BY: A.B.M. DRAWN BY: A.B.M. CHECKED BY: P.E.B.

CITY OF RIVERSIDE, CALIFORNIA  
 PUBLIC WORKS DEPARTMENT

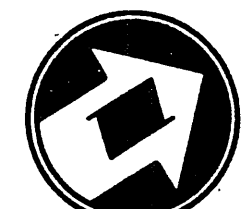
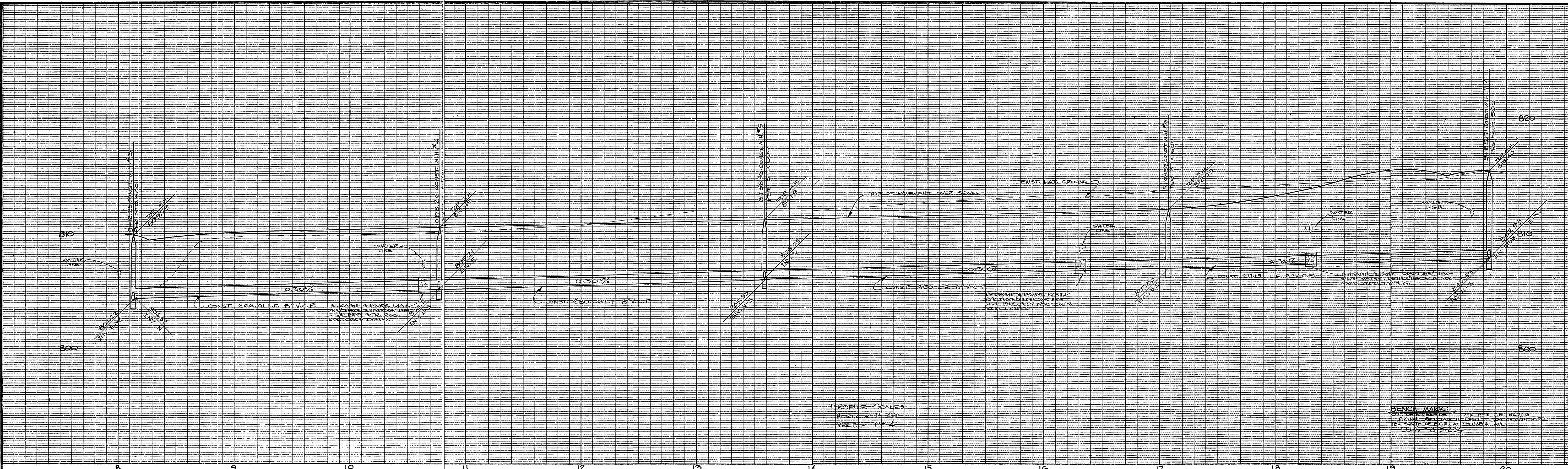
APPROVED BY: *William D. Henderson*  
 DIRECTOR OF PUBLIC WORKS  
 DATE: 3/17/77

SEWER PLANS  
**TRACT No. 5473**  
 HALE STREET &  
 FRESNO STREET

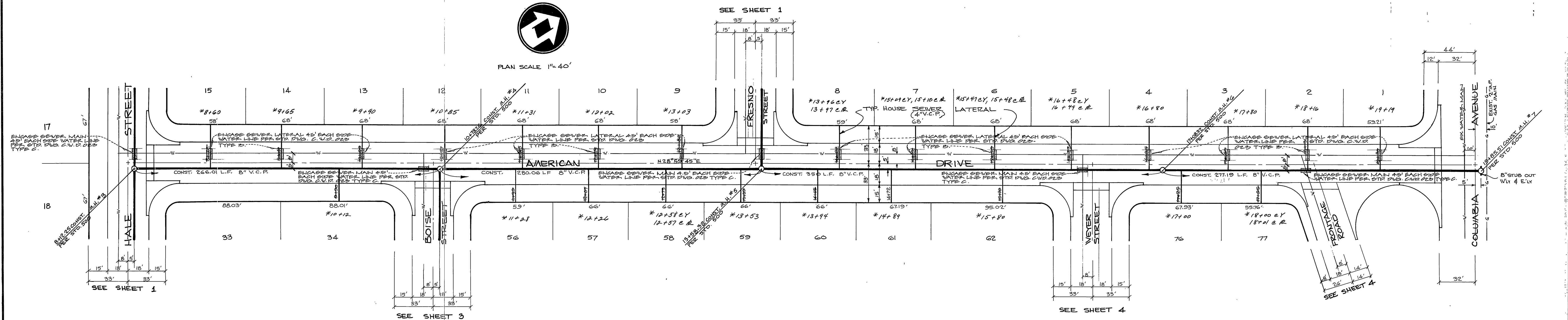
SCALE: HORIZ. 1" = 40' ; VERT. 1" = 4'

INDEXED 2A  
 ACCOUNT No. 4-1070  
 DRAWING NUMBER 9-1070  
 SHEET ONE OF FOUR





PLAN SCALE 1"=40'



SEE SHEET NO. ONE FOR GENERAL NOTES.

**MAXWELL, BROWN & MULLINS**  
 planning engineering surveying  
 SAN BERNARDINO, CALIFORNIA  
 PHILLIP C. BROWN C.E. 18879

I.O. 76-4-5  
 F.B.  
 CHECKED BY: P.E.B.  
 DRAWN BY: M.B.M.  
 DATE 8-2-76

APPROVED BY:  
*Wally Taylor* 2-15-77  
 CHIEF UTILITIES ENGINEER, WATER

CITY OF RIVERSIDE, CALIFORNIA  
 PUBLIC WORKS DEPARTMENT

APPROVED BY: *William D. Gardner*  
 DIRECTOR OF PUBLIC WORKS  
 DATE 3/17/77

DESIGNED BY M.B.M. DRAWN BY M.B.M. CHECKED BY P.E.B.

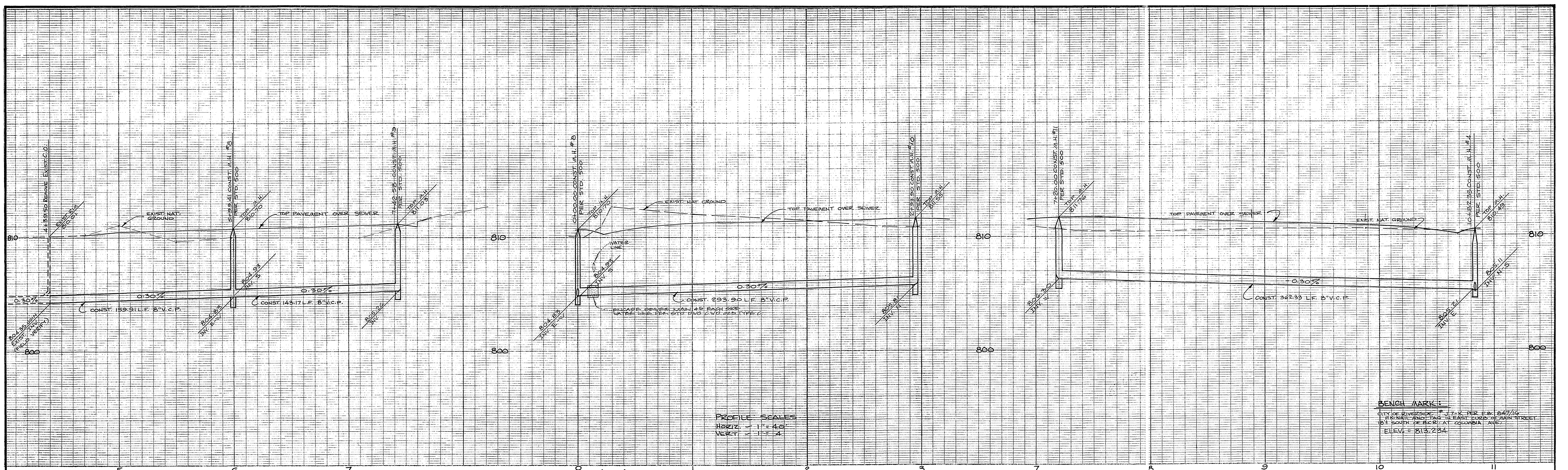
SEWER PLANS  
**TRACT No. 5473**  
 AMERICAN DRIVE

SCALE: HORIZ. 1"=40' ; VERT. 1"=4'

ACCOUNT No. DRAWING NUMBER  
**9-1070**  
 SHEET TWO OF FOUR

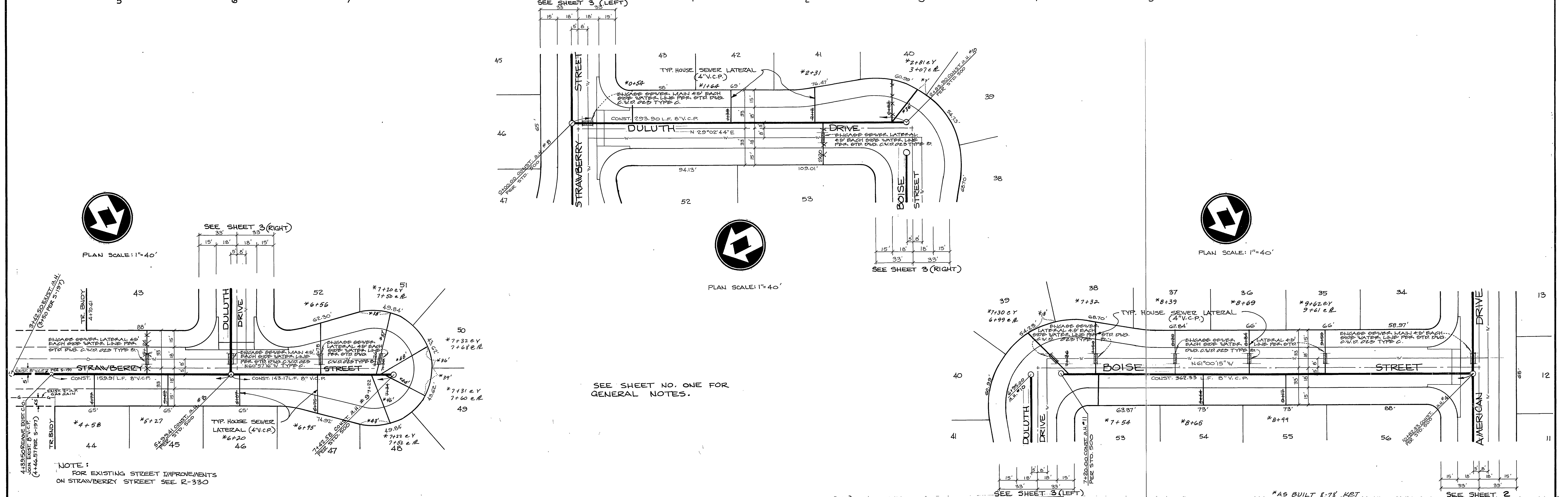
\*AS BUILT 8-78 HBT





PROFILE SCALES  
 HORIZ. 1" = 40'  
 VERT. 1" = 4'

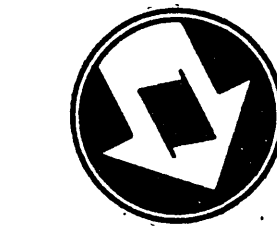
BENCH MARK:  
 CITY OF RIVERSIDE, 17' K. PER E.B. 04/16  
 1' FROM AND TANG. TO EAST CORNER MAIN STREET  
 10' SOUTH OF B.M. AT COLUMBIA AVE.  
 ELEV. = 813.234



PLAN SCALE: 1" = 40'



PLAN SCALE: 1" = 40'



PLAN SCALE: 1" = 40'

NOTE:  
 FOR EXISTING STREET IMPROVEMENTS  
 ON STRAWBERRY STREET SEE R-330

SEE SHEET NO. ONE FOR  
 GENERAL NOTES.

**MAXWELL, BROWN & MULLINS**  
 planning engineering surveying  
 SAN BERNARDINO, CALIFORNIA

J.O.  
 76-4-5  
 F.B.  
 CHECKED BY: P.E.B.  
 DRAWN BY: M.B.M.

DATE: 8-2-76

APPROVED BY:  
*Wally Ayler* 2-15-77  
 CHIEF UTILITIES ENGINEER, WATER

DESIGNED BY: A.D.M. DRAWN BY: A.D.M. CHECKED BY: P.E.B.

MARK	REVISIONS	APPR.	DATE

CITY OF RIVERSIDE, CALIFORNIA  
 PUBLIC WORKS DEPARTMENT

APPROVED BY: *William D. Gordon*  
 DIRECTOR OF PUBLIC WORKS

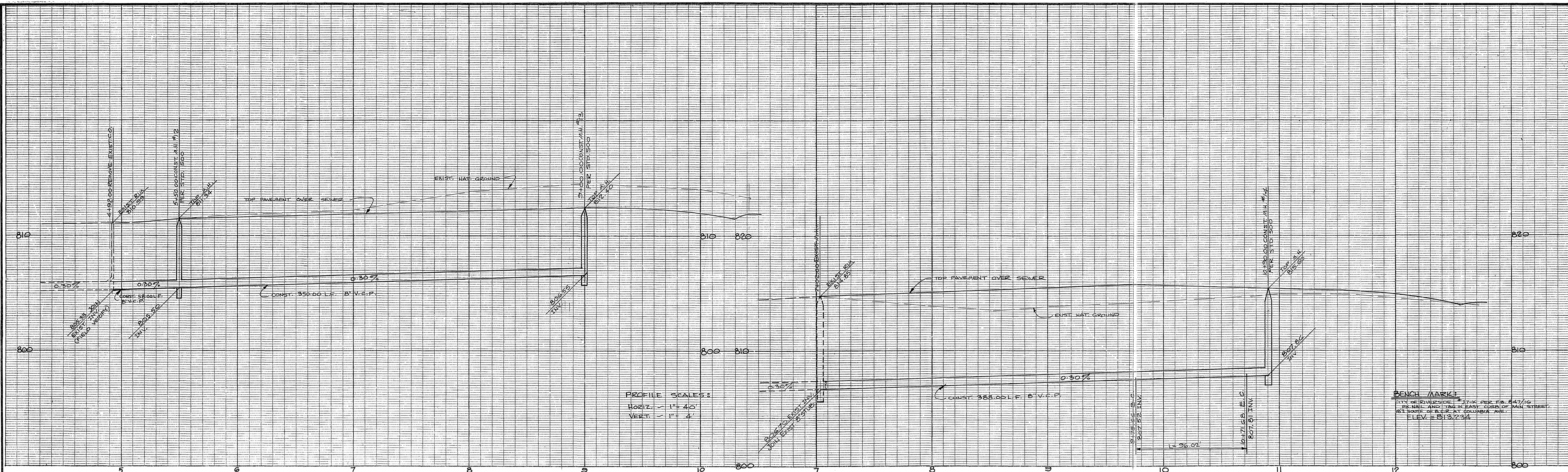
DATE: 3/17/77

SEWER PLANS  
 TRACT No. 5473  
 STRAWBERRY STREET  
 DULUTH DRIVE  
 BOISE STREET

SCALE: HORIZ. 1" = 40' ; VERT. 1" = 4'

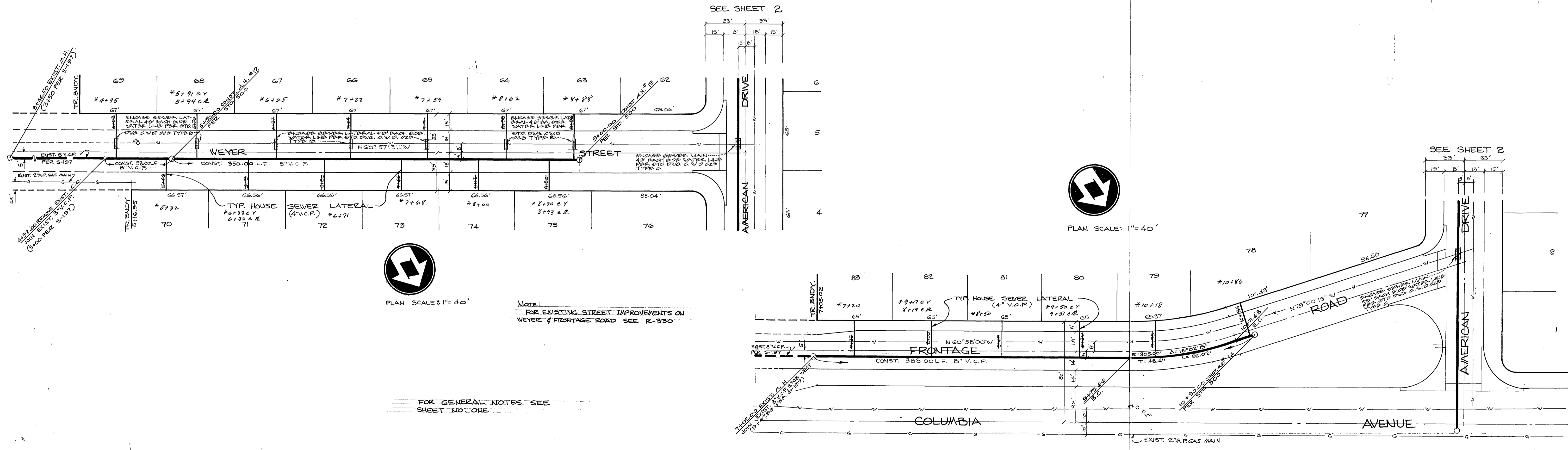
ACCOUNT NO.  
 DRAWING NUMBER  
 9-1070  
 SHEET THREE OF FOUR





PROFILE SCALES:  
 Horiz. 1" = 40'  
 Vert. 1" = 4'

BENCH MARK:  
 CITY OF RIVERSIDE, 17.4' PER F.S. 6471/G  
 PENAL AND TAG IN EAST CORNER OF MAIN STREET  
 12' NORTH OF E.C.R. AT COLUMBIA AVE.  
 ELEV. = 813.234'



PLAN SCALE: 1" = 40'

Note:  
 FOR EXISTING STREET IMPROVEMENTS ON  
 WEYER & FRONTAGE ROAD SEE R-330

FOR GENERAL NOTES SEE  
 SHEET NO. ONE

**MAXWELL, BROWN & MULLINS**  
 planning engineering surveying  
 SAN BERNARDINO, CALIFORNIA  
 I.O. 76-4-5  
 F.B.  
 CHECKED BY: P.E.B.  
 DRAWN BY: M.B.A.  
 DATE: 8-2-76

APPROVED BY: *Wally Hoff* 2-15-77  
 CHIEF UTILITIES ENGINEER, WATER  
 DATE

MARK	REVISIONS	APPR. DATE

DESIGNED BY: M.B.A. DRAWN BY: M.B.A. CHECKED BY: P.E.B.

CITY OF RIVERSIDE, CALIFORNIA  
 PUBLIC WORKS DEPARTMENT  
 APPROVED BY: *William D. Henderson*  
 DIRECTOR OF PUBLIC WORKS  
 DATE: 3/17/77

SEWER PLANS  
 TRACT No. 5473  
 WEYER STREET &  
 FRONTAGE ROAD  
 SCALE: HORIZ. 1" = 40' ; VERT. 1" = 4'  
 ACCOUNT No. 9-1070  
 SHEET FOUR OF FOUR