

**GENERAL NOTES**

- CONSTRUCTION SHALL BE IN ACCORDANCE WITH STANDARD SPECIFICATIONS FOR PUBLIC WORKS CONSTRUCTION, 1976 EDITION.
- WHERE THE PROPOSED SEWER CROSSES A WATER MAIN, THE CONTRACTOR SHALL ENCASE THE SEWER OR WATER MAIN PER P.U.D. WATER DIVISION STD. DRAWING NO. CWD-021.
- ALL STATIONING ON SEWER CENTERLINE.
- THE CONTRACTOR SHALL BE RESPONSIBLE TO REPAIR OR REPLACE IN KIND AT HIS OWN EXPENSE ANY IMPROVEMENTS DAMAGED BY HIS OPERATION DURING CONSTRUCTION.
- BACKFILL SHALL BE IN ACCORDANCE WITH CITY OF RIVERSIDE STD. DWG. NO. 453.
- PIPE SHALL BE BEDDED PER CASE I, CITY OF RIVERSIDE STD. DWG. NO. 452.
- LOCATION OF LATERALS TO BE DETERMINED IN THE FIELD AT THE DIRECTION OF THE OWNER, AVOID CONFLICT WITH PROPOSED AND/OR EXISTING FACILITIES.
- CONTRACTOR IS TO VERIFY EXISTING SEWER ELEVATION PRIOR TO CONSTRUCTION.
- THE SEWER CONTRACTOR SHALL ADJUST MANHOLES TO FINAL GRADE AFTER PAVING IS COMPLETED.
- A PLUG SHALL BE INSTALLED AND WILL REMAIN IN PLACE WHERE THE NEW SEWER CONNECTS WITH THE EXISTING SEWER UNTIL THE NEW SEWER IS ACCEPTED BY THE CITY.

**CONSTRUCTION LEGEND**

- 500 CONSTRUCT MANHOLE PER CITY OF RIVERSIDE STD. DWG. NO. 500.
- 560 CONSTRUCT CLEAN OUT PER CITY OF RIVERSIDE STD. DWG. NO. 560.
- 562 CONSTRUCT SEWER LATERAL PER CITY OF RIVERSIDE STD. DWG. NO. 562.

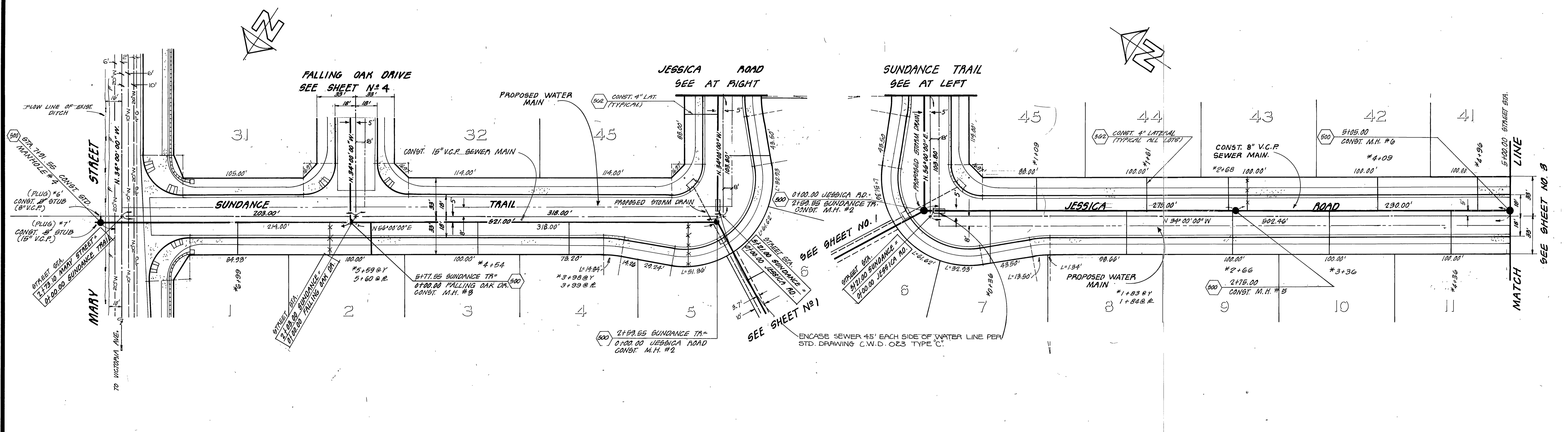
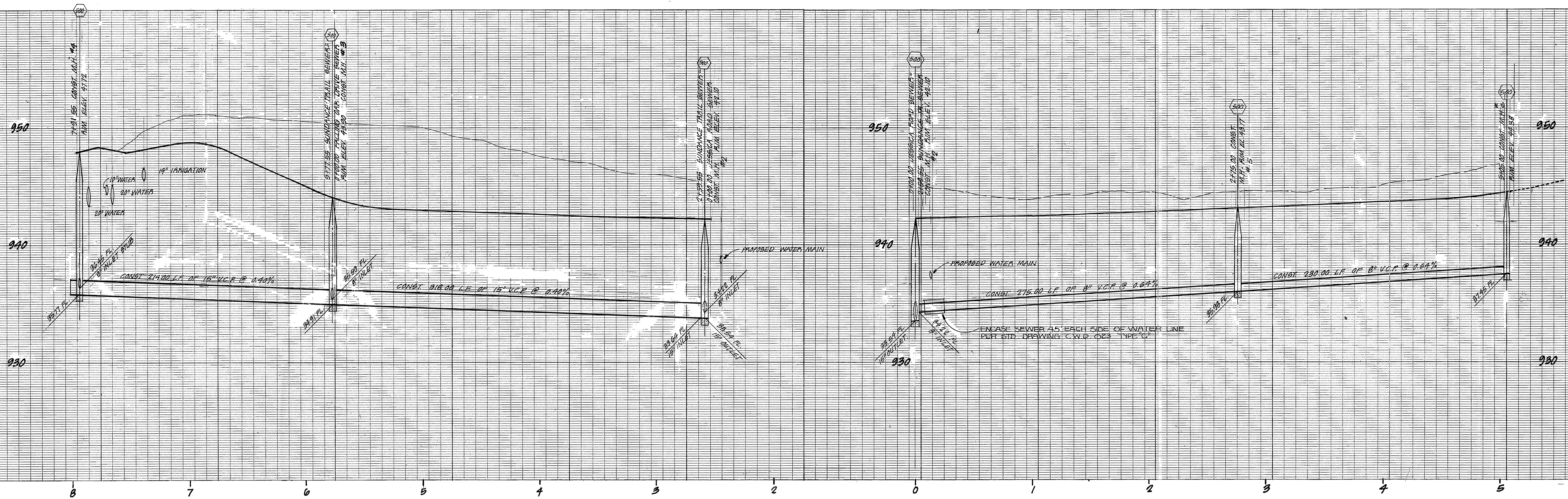
**NOTICE TO CONTRACTOR**

THE EXISTENCE AND LOCATION OF ANY UNDERGROUND UTILITY PIPES OR STRUCTURES SHOWN ON THIS PLAN ARE OBTAINED BY A SEARCH OF THE AVAILABLE RECORDS TO THE BEST OF OUR KNOWLEDGE THERE ARE NO EXISTING UTILITY EXCEPT AS SHOWN ON THESE PLANS. THE CONTRACTOR IS REQUIRED TO TAKE DUE PRECAUTION MEASURES TO PROTECT THE UTILITIES LINES SHOWN AND ANY OTHER LINES NOT OF RECORD OR NOT SHOWN ON THIS PLAN.

**NOTE:**  
THESE PLANS ARE FOR SEWER CONSTRUCTION ONLY!

APPROVED BY: <i>Walter Saffa</i> CHIEF UTILITIES ENGINEER, WATER	DATE: 12-1-76	<b>HAWKINS ROBERTSON &amp; ASSOCIATES</b> ENGINEERS - SURVEYORS 3756 ELIZABETH STREET - RIVERSIDE, CALIFORNIA 92504 DATE: 10/26/76 BY: Charles E. Robertson R.C.E. 19016	CITY OF RIVERSIDE, CALIFORNIA DEPARTMENT OF PUBLIC WORKS	TRACT 7850 <b>SEWER PLAN &amp; PROFILE</b> SEWER EASEMENT	PROJECT NO. 6-1072
BENCH MARK: I.C.A., FB. BRASS DISC. STAMPED (76-A) CAPPED & INTERSECTION OF VICTORIA AVE. & WASHINGTON ST. FB. 785-3 ELEV. 927.977			APPROVED BY: DATE: 3-7-77 DIRECTOR OF PUBLIC WORKS	SHEET 1 OF 4	FILE NO. 76-2638
DESIGNED BY: <i>Col</i> DRAWN BY: <i>Ray</i> CHECKED BY: <i>W</i>			DATE: 3-7-77	HORIZ. SCALE: 1" = 40'	VERT. SCALE: 1" = 4'





NOTE -  
SEE SHEET 1 FOR GENERAL NOTES  
AND CONSTRUCTION NOTES.

APPROVED BY:  
*Handwritten Signature*  
CHIEF UTILITIES ENGINEER, WATER DATE 12-7-76

**HAWKINS ROBERTSON & ASSOCIATES**  
ENGINEERS - SURVEYORS  
3786 ELIZABETH STREET - RIVERSIDE CALIFORNIA 92504  
DATE 10/26/76  
BENCH MARK: F&A PD. D.M. 955 DISC. STAMPED  
176-A1 CAPPED @ INTERSECTION OF VICTORIA AVE. &  
WASHINGTON ST. (B-799-3 ELEV. 927.799)

MARK REVISIONS APPR. DATE  
DESIGNED BY *EL* DRAWN BY *LL* CHECKED BY *MM*

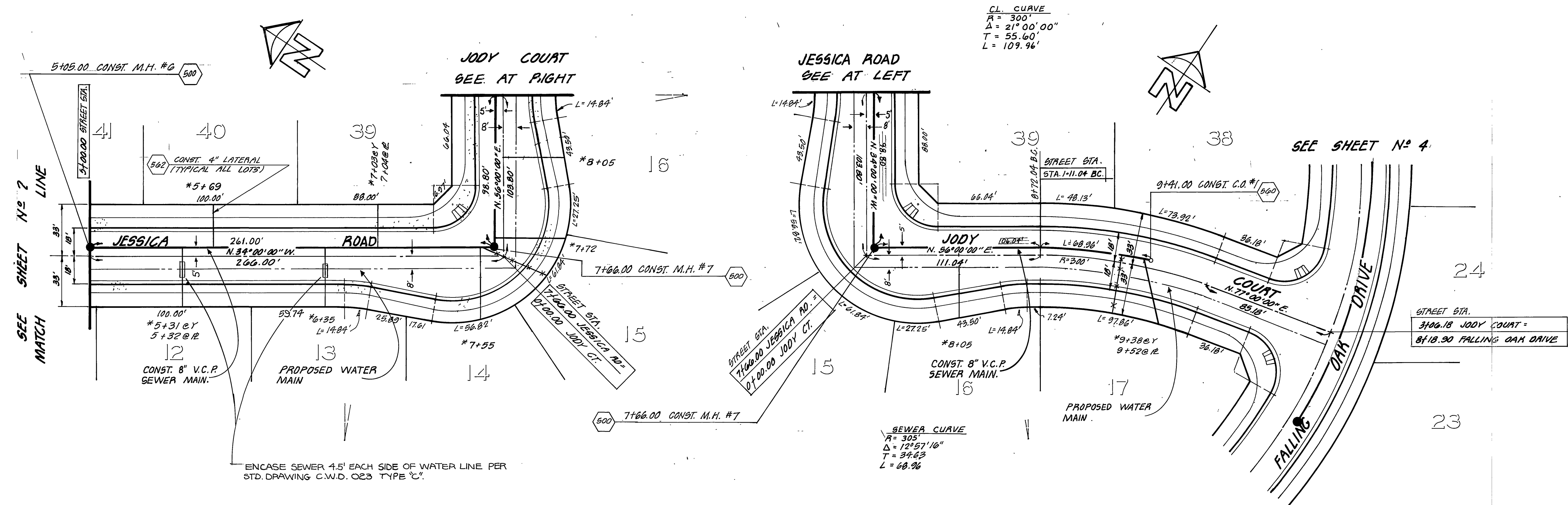
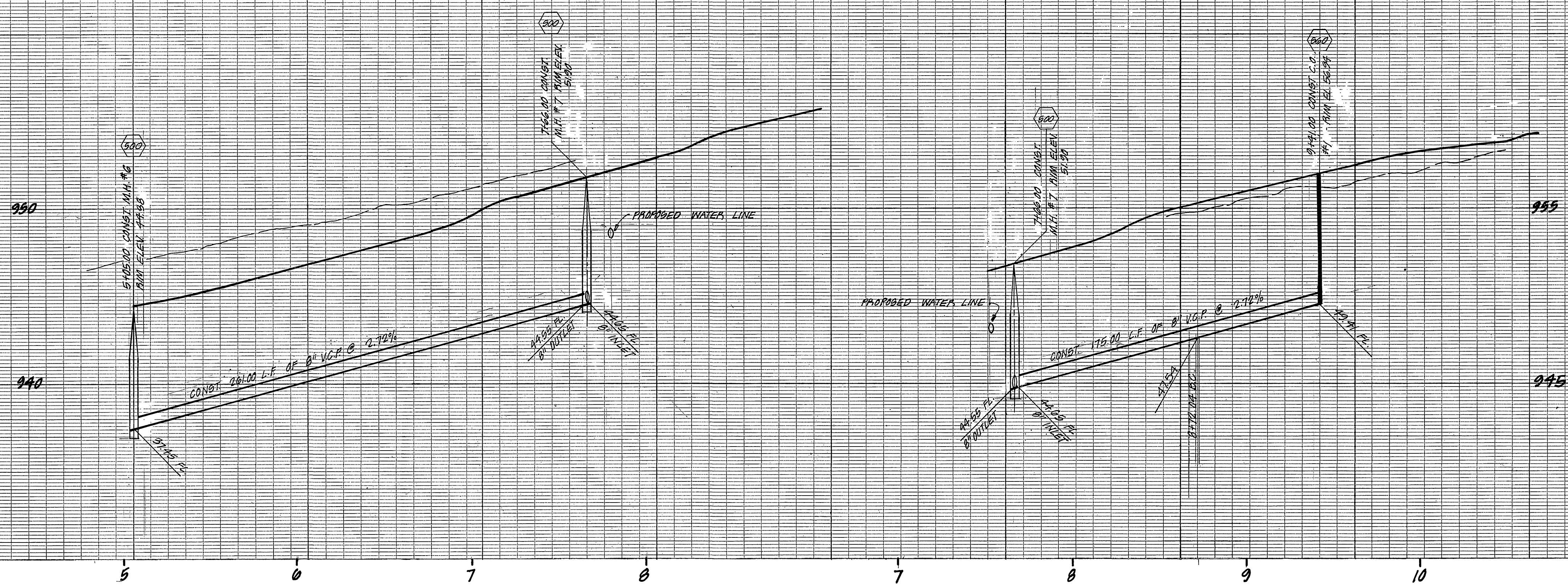
CITY OF RIVERSIDE, CALIFORNIA  
DEPARTMENT OF PUBLIC WORKS  
APPROVED BY: *Handwritten Signature*  
DIRECTOR OF PUBLIC WORKS  
DATE 3-7-77

\*AS BUILT 6-77 KET  
TRACT 7850  
**SEWER PLAN & PROFILE**  
SUNDANCE TRAIL  
JESSICA ROAD

PROJECT NO. 5-1078  
SHEET 2 OF 4  
FILE NO. 70-2638

HORIZ. SCALE: 1" = 40' VERT. SCALE: 1" = 4'





37.63

SEE SHEET NO. 2  
MATCH

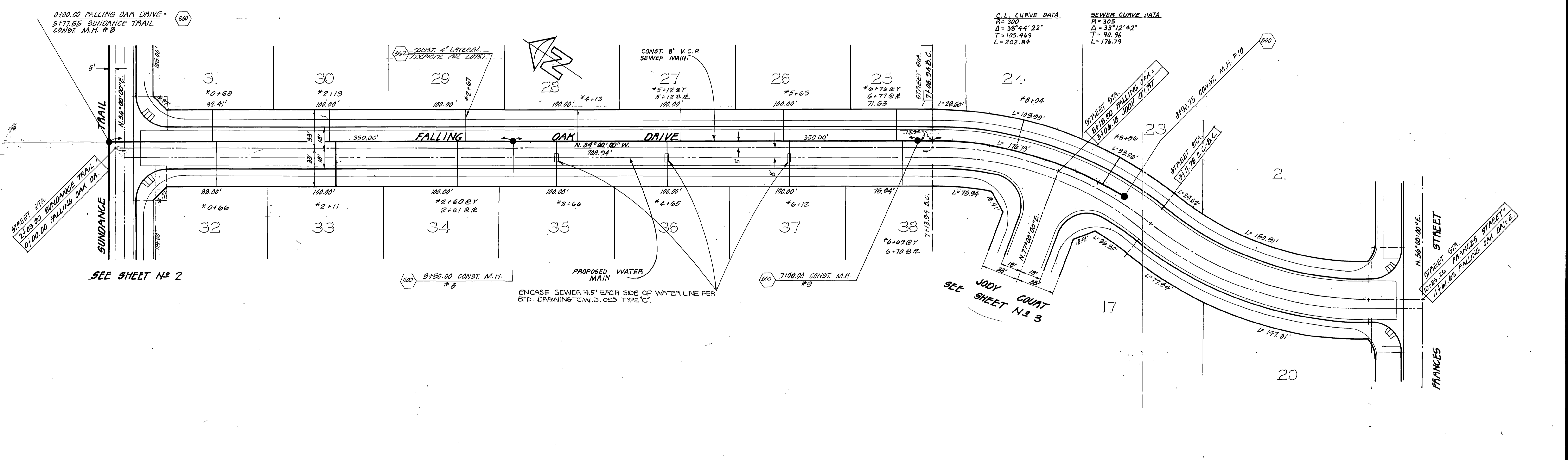
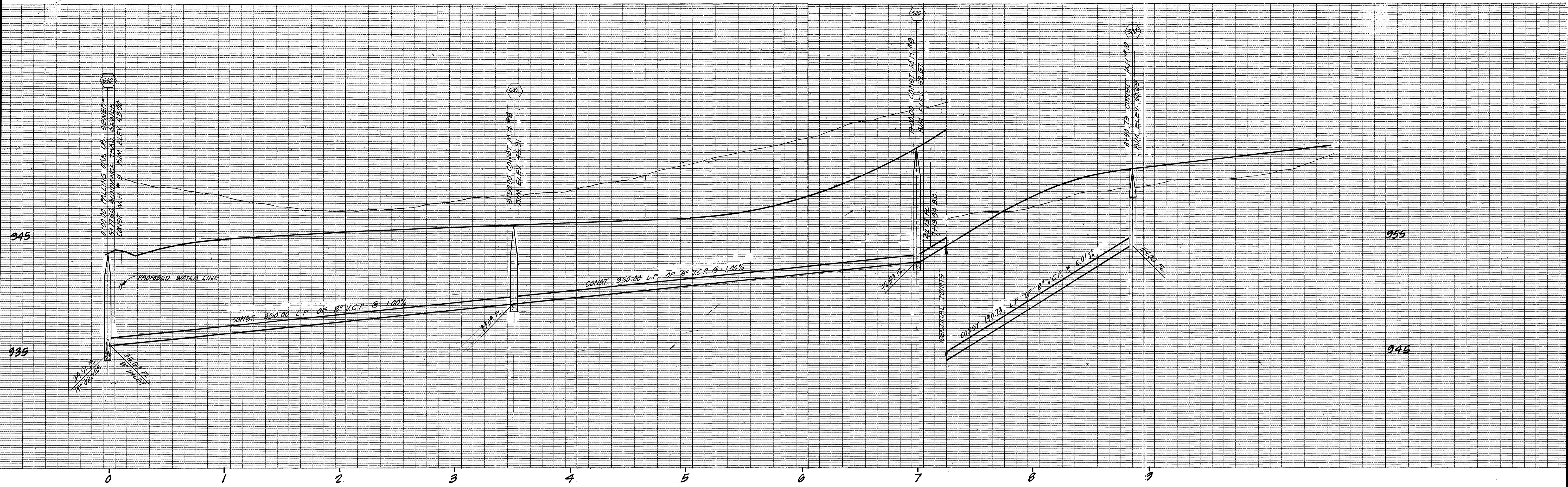
SEE SHEET NO. 4

ENCASE SEWER 4.5' EACH SIDE OF WATER LINE PER STD. DRAWING C.W.D. 023 TYPE 'C'.

NOTE -  
SEE SHEET 1 FOR GENERAL NOTES  
AND CONSTRUCTION NOTES.

APPROVED BY: <i>[Signature]</i> CHIEF UTILITIES ENGINEER, WATER DATE: 12-1-76		<b>HAWKINS ROBERTSON &amp; ASSOCIATES</b> ENGINEERS - SURVEYORS 3750 ELIZABETH STREET RIVERSIDE CALIFORNIA 92504 8/26/76 DATE <i>[Signature]</i> N.C.E. 15016		CITY OF RIVERSIDE, CALIFORNIA DEPARTMENT OF PUBLIC WORKS		*AS BUILT 6-77 KET TRACT 7850 <b>SEWER PLAN &amp; PROFILE</b> JESSICA ROAD JODY COURT		PROJECT NO. 76-2630 S-1072 SHEET 3 OF 4	
DESIGNED BY: <i>[Signature]</i> DRAWN BY: <i>[Signature]</i> CHECKED BY: <i>[Signature]</i>		BENCH MARK: F&A FD BRASS DISC STAMPED (16-A) CAPPED @ INTERSECTION OF VICTORIA AVE & WASHINGTON ST. FD. 735-3 ELEV. 927-979		APPROVED BY: <i>[Signature]</i> OFFICE ENGINEER PARK DEPARTMENT TRAFFIC DIVISION ASSISTANT CITY ENG.		APPROVED BY: <i>[Signature]</i> DIRECTOR OF PUBLIC WORKS DATE: 3-7-77		HORIZ. SCALE: 1" = 40' VERT. SCALE: 1" = 4' FILE NO.	





C.L. CURVE DATA		SEWER CURVE DATA	
R = 300	Δ = 38°44'22"	R = 305	Δ = 33°12'42"
T = 105.469	L = 202.84	T = 90.96	L = 176.79

NOTE - SEE SHEET 3 FOR GENERAL NOTES AND CONSTRUCTION NOTES.

APPROVED BY: *[Signature]* 12-1-76  
 CHIEF UTILITIES ENGINEER, WATER DATE

**HAWKINS ROBERTSON & ASSOCIATES**  
 ENGINEERS - SURVEYORS  
 3756 ELIZABETH STREET - RIVERSIDE CALIFORNIA  
 DATE 8/26/76 Charles E. Robertson R.C.E. 15016

BENCH MARK: 16-A F.D. 88496 DIRC. STAMPED (16-A) CAPPED @ INTERSECTION OF VICTORIA AVE. & WASHINGTON ST. F.D. 189-3 ELEV. 927.979

MARK	REVISIONS	APPR.	DATE

DESIGNED BY: *[Signature]* DRAWN BY: *[Signature]* CHECKED BY: *[Signature]*

CITY OF RIVERSIDE, CALIFORNIA  
 DEPARTMENT OF PUBLIC WORKS  
 PARK DEPARTMENT  
 TRAFFIC DIVISION  
 ASSISTANT CITY ENG.

APPROVED BY: *[Signature]* DATE 3-7-77  
 DIRECTOR OF PUBLIC WORKS

\*AS BUILT 6-77 RKT

TRACT 7850  
**SEWER PLAN & PROFILE**  
 FALLING OAK DRIVE

PROJECT NO. 76-2628  
 S-1072  
**4** OF 4  
 SHEET OF  
 FILE NO.

HORIZ. SCALE: 1" = 40'  
 VERT. SCALE: 1" = 4'