

**GENERAL NOTES**

1. IT SHALL BE THE RESPONSIBILITY OF THE CONTRACTOR TO CLEAR THE RIGHT OF WAY IN ACCORDANCE WITH THE PROVISIONS OF LAW AS IT AFFECTS EACH UTILITY INCLUDING IRRIGATION LINES AND APPURTENANCES AND AT NO COST TO THE CITY.
2. CONSTRUCTION SHALL BE IN ACCORDANCE WITH THE CITY OF RIVERSIDE, DEPT. PUBLIC WORKS, STANDARD DRAWINGS, AND THE STANDARD SPECIFICATIONS FOR PUBLIC WORKS CONSTRUCTION, 1976 EDITION.
3. LOCATION OF LATRENALS TO BE DETERMINED IN THE FIELD AT THE DIRECTION OF THE OWNER. AVOID CONFLICT WITH PROPOSED AND OR EXISTING FACILITIES.
4. CONTRACTOR IS TO VERIFY EXISTING SEWER ELEVATION PRIOR TO CONSTRUCTION.
5. THE SEWER CONTRACTOR SHALL ADJUST MANHOLES TO FINAL GRADE AFTER PAVING IS COMPLETED.
6. A PLUG SHALL BE INSTALLED AND WILL REMAIN IN PLACE WHERE THE NEW SEWER CONNECTS WITH THE EXISTING SEWER UNTIL THE NEW SEWER IS ACCEPTED BY THE CITY.

**BENCH MARK**

CITY OF RIVERSIDE, B.M. C-54  
 SHOULD BE MARKED AND TIED TO  
 RIVERSIDE WATER COMPANY  
 CANAL HEADWALL ON WLY SIDE  
 MONROE STREET.  
 ELEV. = 845.00

J. F. DAVIDSON ASSOCIATES  
 CIVIL ENGINEERS - SURVEYORS - PLANNERS  
 RIVERSIDE, CALIFORNIA

APPROVED BY:  
*Wally Hylen*  
 CHIEF UTILITIES ENGINEER, WATER  
 DATE 11-18-76

APPROVED BY: *John W. ...* DATE 10/21/76  
 R.E. No. 17550  
 W.O. 4938 FOR LEIT LAND CO. F.B. 1099

MARK	REVISIONS	APPR. DATE
DESIGNED BY	DRAWN BY	CHECKED BY <i>BDM</i>

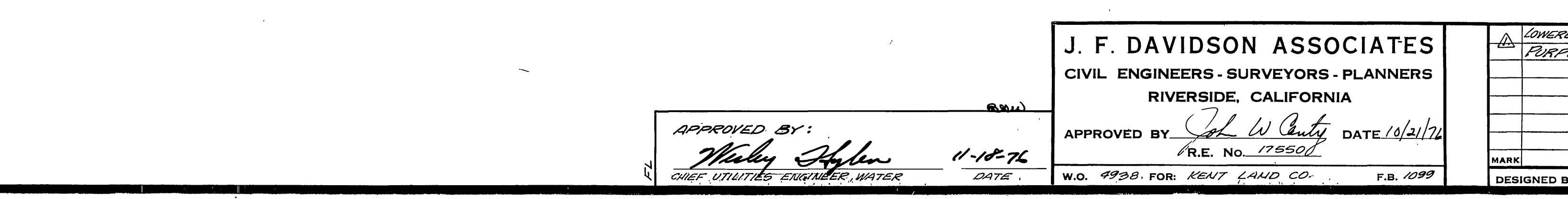
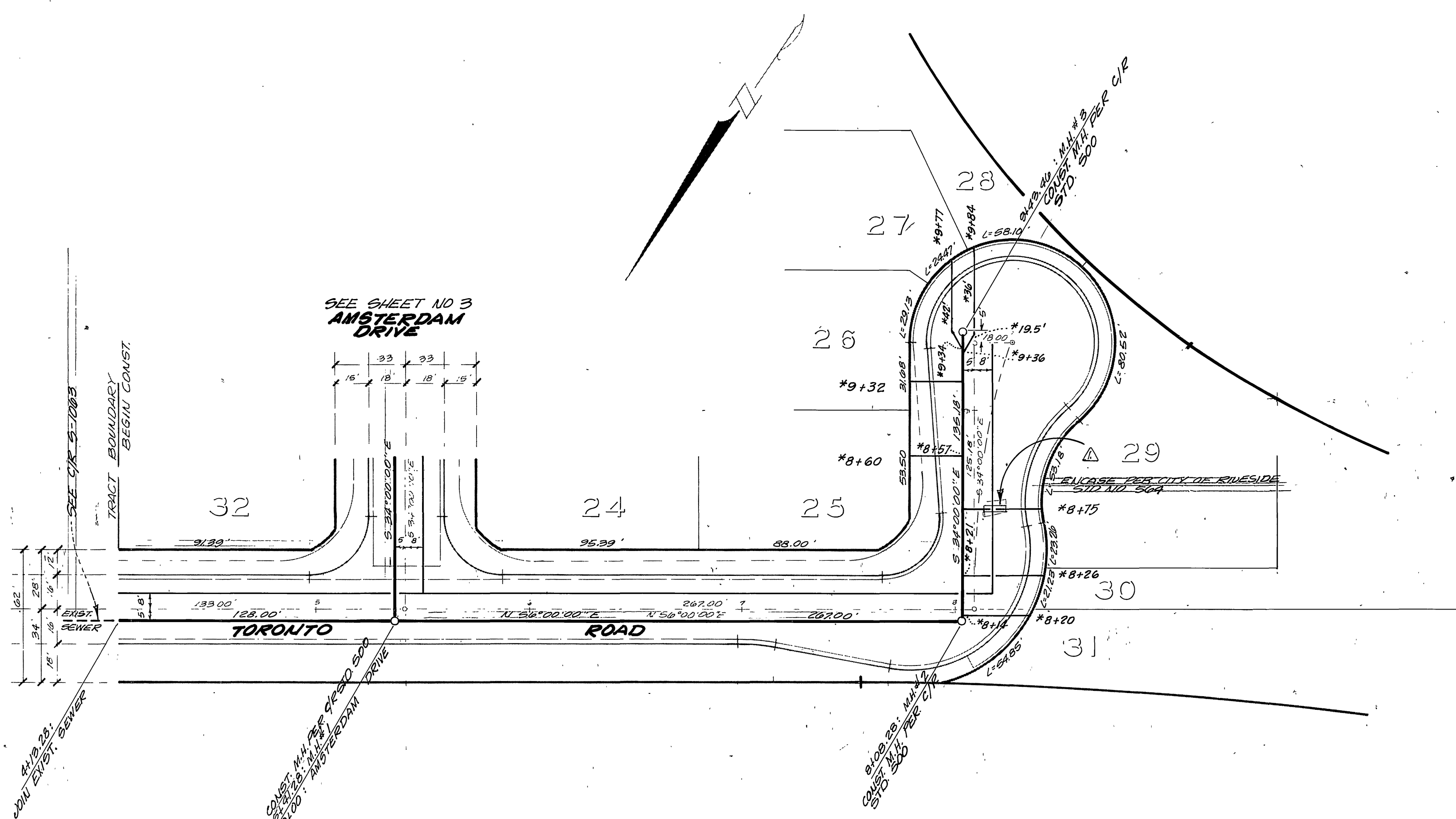
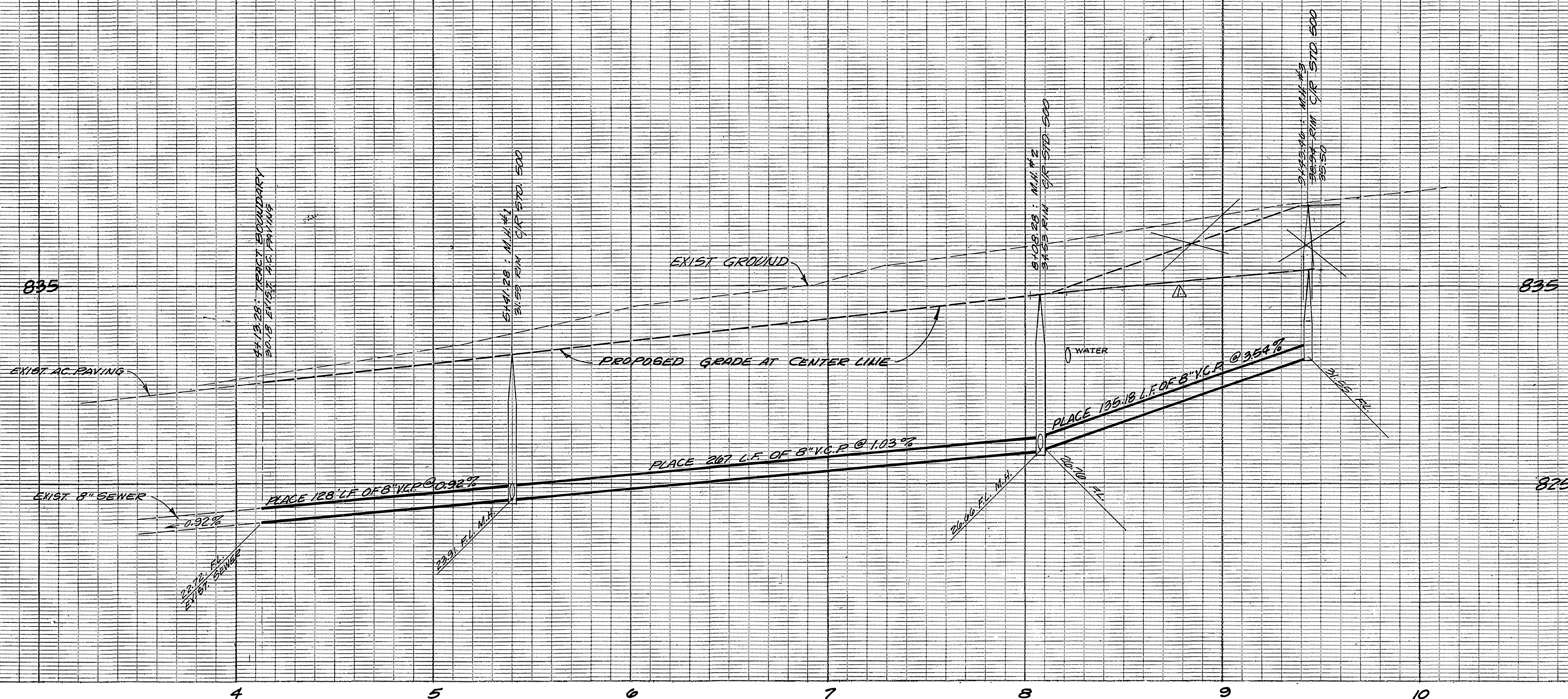
CITY OF RIVERSIDE, CALIFORNIA  
 DEPARTMENT OF PUBLIC WORKS

APPROVED BY: *William S. ...*  
 OFFICE ENGINEER  
 PARK DEPARTMENT  
 TRAFFIC DIVISION  
 ASSISTANT CITY ENG.  
 DATE 3-8-77

\*AS BUILT 6-77 KPT

TITLE SHEET  
**TRACT 7675**  
**SEWER PLAN & PROFILE**

INDEXED 7.8  
 PROJECT NO.  
**S-1074**  
 SHEET 1 OF 2  
 FILE NO. 5501



NOTE:  
FOR GENERAL NOTES SEE SHEET NO 1

BENCH MARK  
CITY OF RIVERSIDE B.M. F.S.H  
FOUND PK. NAIL TAG IN RIVER-  
SIDE WATER CO CANAL HEAD-  
WALL WLY SIDE MOURDE ST  
CIR F.B. 839/33  
ELEV 845.00

\*AS BUILT 6-77 KET

APPROVED BY:  
*Wesley Hylen*  
CHIEF UTILITIES ENGINEER, WATER  
DATE: 11-18-76

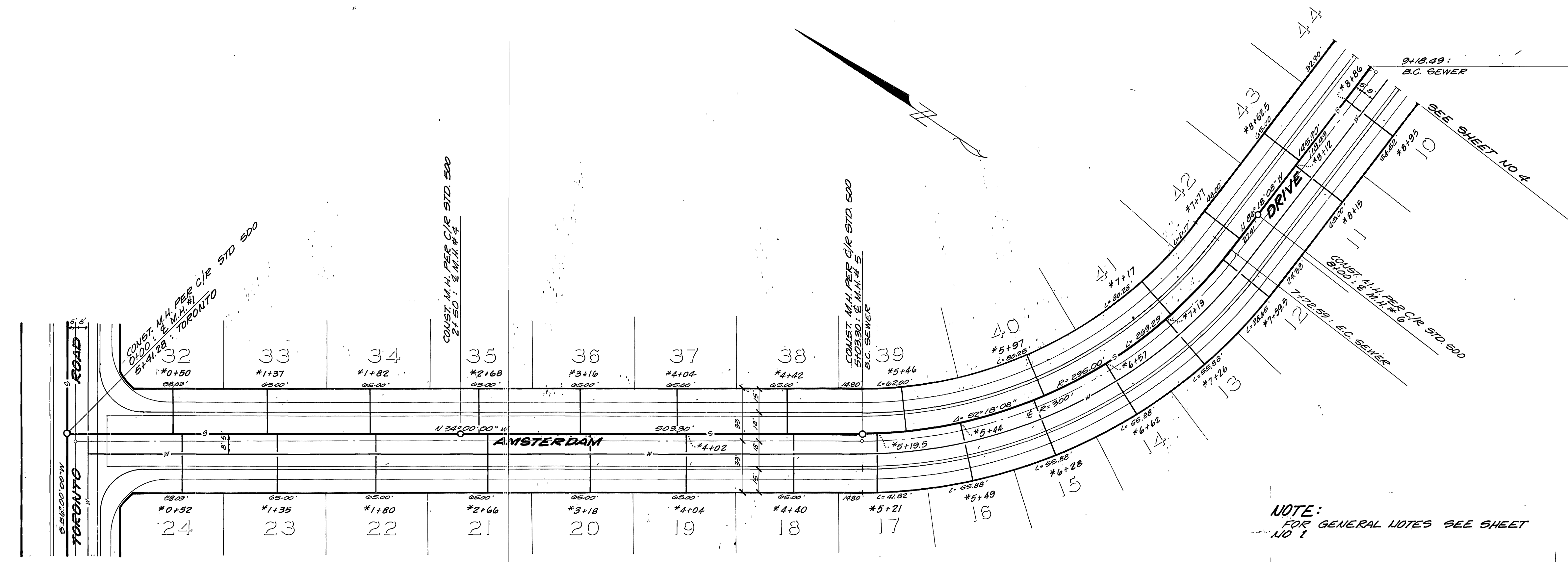
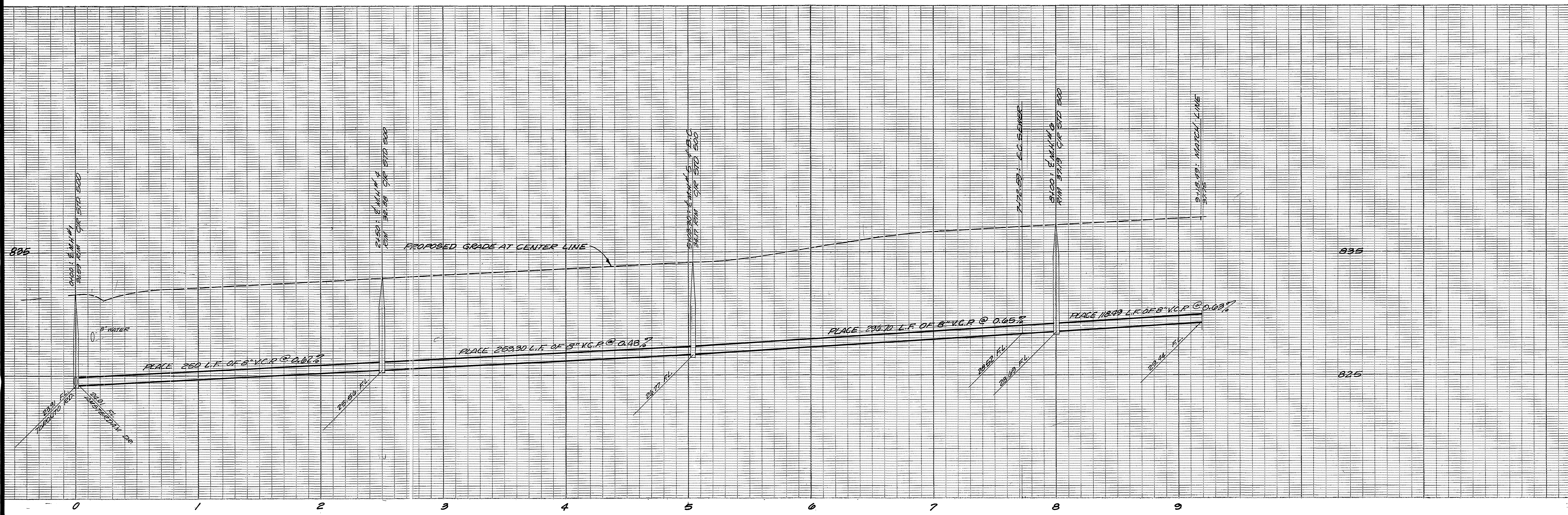
J. F. DAVIDSON ASSOCIATES  
CIVIL ENGINEERS - SURVEYORS - PLANNERS  
RIVERSIDE, CALIFORNIA  
APPROVED BY: *John W. Canty* DATE 10/21/76  
R.E. No. 175501  
W.O. 4938 FOR KENT LAND CO. F.B. 1099

DESIGNED BY	DRAWN BY	CHECKED BY	DATE

CITY OF RIVERSIDE, CALIFORNIA  
DEPARTMENT OF PUBLIC WORKS  
TRAFFIC DIVISION  
CHIEF P. W. ENGR.  
APPROVED BY: *William S. Henderson*  
DIRECTOR OF PUBLIC WORKS  
DATE: 3/8/77

SEWER PLAN AND PROFILE  
TRACT 7675  
TORONTO ROAD  
HORIZ. SCALE: 1" = 40'  
VERT. SCALE: 1" = 4'

PROJECT NO.  
S-1074  
SHEET 2 OF 4  
FILE NO. 5501



SEE SHEET NO 2

NOTE:  
FOR GENERAL NOTES SEE SHEET  
NO 1

**BENCH MARK**  
CITY OF RIVERSIDE B.M.F.-5-H  
FOUND BY MAIL 1745 IN RIVER  
SIDE WATER CO. CANAL HEAD  
WALL WLY SIDE MONROE ST.  
C/R F.B. 833/33  
ELEV. 845.00

\*AS BUILT 6-77 KET

**J. F. DAVIDSON ASSOCIATES**  
CIVIL ENGINEERS - SURVEYORS - PLANNERS  
RIVERSIDE, CALIFORNIA

APPROVED BY: *[Signature]* DATE 10/21/76  
R.E. No. 12550

APPROVED BY: *[Signature]* DATE 11-18-76  
CHIEF UTILITIES ENGINEER, WATER

**CITY OF RIVERSIDE, CALIFORNIA**  
DEPARTMENT OF PUBLIC WORKS

APPROVED BY: *[Signature]* DATE 3/8  
DIRECTOR OF PUBLIC WORKS

DATE 3-8-77

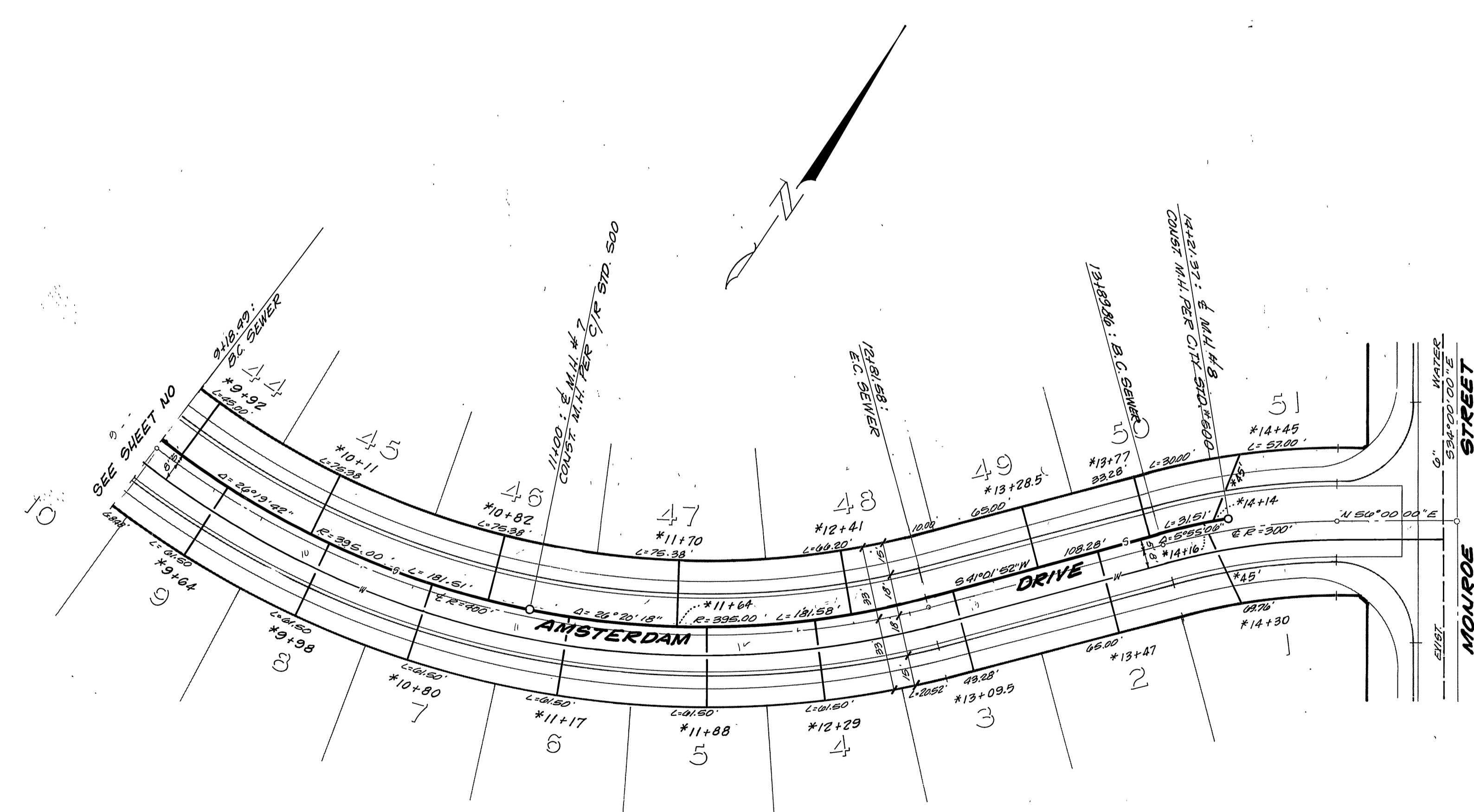
**SEWER PLAN AND PROFILE**  
**TRACT 7675**  
**AMSTERDAM DRIVE**

PROJECT NO.  
**S-1074**

SHEET **3** OF **4**

FILE NO. 5501

HORIZ. SCALE: 1" = 40' VERT. SCALE: 1" = 4'



NOTE:  
FOR GENERAL NOTES, SEE SHEET  
NO 1

BENCH MARK  
CITY OF RIVERSIDE B.M. F.S.-H  
ROUND PL NAIL FLAG IN RIVER-  
SIDE WATER CO CANAL HEAD -  
WALL WLY SIDE MONROE ST.  
C.I.R. F.B. 899/93  
ELEV. 845.00

\*AS BUILT 6/77 KET

APPROVED BY:  
*[Signature]*  
CHIEF UTILITIES ENGINEER, WATER

J. F. DAVIDSON ASSOCIATES  
CIVIL ENGINEERS - SURVEYORS - PLANNERS  
RIVERSIDE, CALIFORNIA  
APPROVED BY: *[Signature]* DATE 10/2/76  
R.E. No. 12550

MARK	DESIGNED BY	DRAWN BY	CHECKED BY	DATE

CITY OF RIVERSIDE, CALIFORNIA  
DEPARTMENT OF PUBLIC WORKS  
APPROVED BY: *[Signature]*  
PRINCIPAL ENGINEER  
TRAFFIC DIVISION  
DATE 3-8-77

SEWER PLAN AND PROFILE  
TRACT 7675  
AMSTERDAM DRIVE  
HORIZ. SCALE: 1" = 40' VERT. SCALE: 1" = 4'

PROJECT NO.  
S-1074  
SHEET 4 OF 4  
FILE NO. 5501