

GENERAL NOTES

1. Construction shall be in accordance with the standard Specifications for Public Works Construction, 1976 Edition, and City of Riverside Standard drawings.
2. It shall be the responsibility of the contractor to clear the right of way in accordance with the provisions of the law as it affects each utility including irrigation lines and appurtenances and at no cost to the City.
3. The pipe shall be bedded per case 1, standard Drawing No. 452.
4. Location of wyes and laterals to be determined at the time of construction at the direction of the owner.
5. All stubs and laterals to be constructed per standard drawing No. 562 stubs shall be plugged and capped.
6. Manhole frames and covers, to be set to finish grade by the sewer contractor after the final paving of streets.
7. Laterals to be 4" V.C.P. and extended to the property line.
8. A plug shall be installed and will remain in place where the new sewer connects to the existing sewer until the new sewer is accepted by the city.

NOTICE TO CONTRACTOR

The existence and location of any underground utility pipes or structures shown on these plans are obtained by a search of the available records. To the best of our knowledge, there are no existing utilities except as shown on these plans.

NOTE:
The private engineer signing these plans is responsible for assuring the accuracy and acceptability of the work herein. In the event of discrepancies arising during construction as a result of errors or omissions, the private engineer shall be responsible for determining an acceptable solution and revising the plans for approval by the City.

BENCH MARK:

E+G 1/2" I.P. capped @ intersection of Victoria Ave. and Harrison St. Elev. 856.392

*AS BUILT 8-77 KPT

APPROVED BY:
Wiley Hyman
CHIEF UTILITIES ENGINEER, WATER DATE 10-19-76

ALBERT A. WEBB ASSOCIATES
CIVIL ENGINEERS
RIVERSIDE, CALIFORNIA
APPROVED BY: *A.A. Webb* DATE 10-19-76
R.E. No. 16056
W.O. 7461 FOR: Bratkin Contractors Inc. F.B. 1021

MARK	REVISIONS	APPR.	DATE

CITY OF RIVERSIDE, CALIFORNIA
PUBLIC WORKS DEPARTMENT
APPROVED BY: *[Signature]*
PRINCIPAL ENGINEER
PARK DEPARTMENT
TRAFFIC DIVISION
CHIEF PUB. WORKS ENGR.
DATE 5-2-77

SEWER PLAN AND PROFILE
INDEX
TRACT 5935
SCALE: 1"=50'

INDEXED Z.A.
ACCOUNT No.
DRAWING NUMBER
S-1075
SHEET 1 OF 4
74-61-B

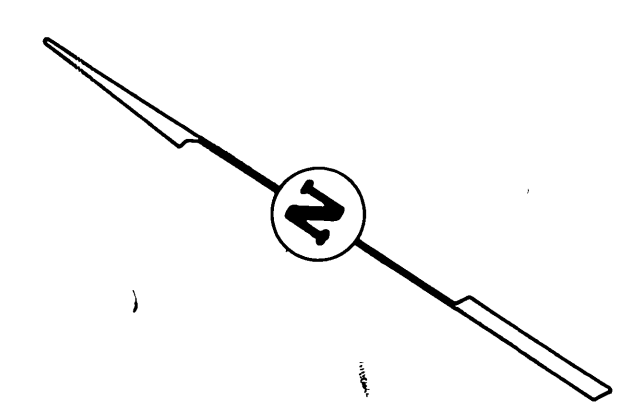
865

855

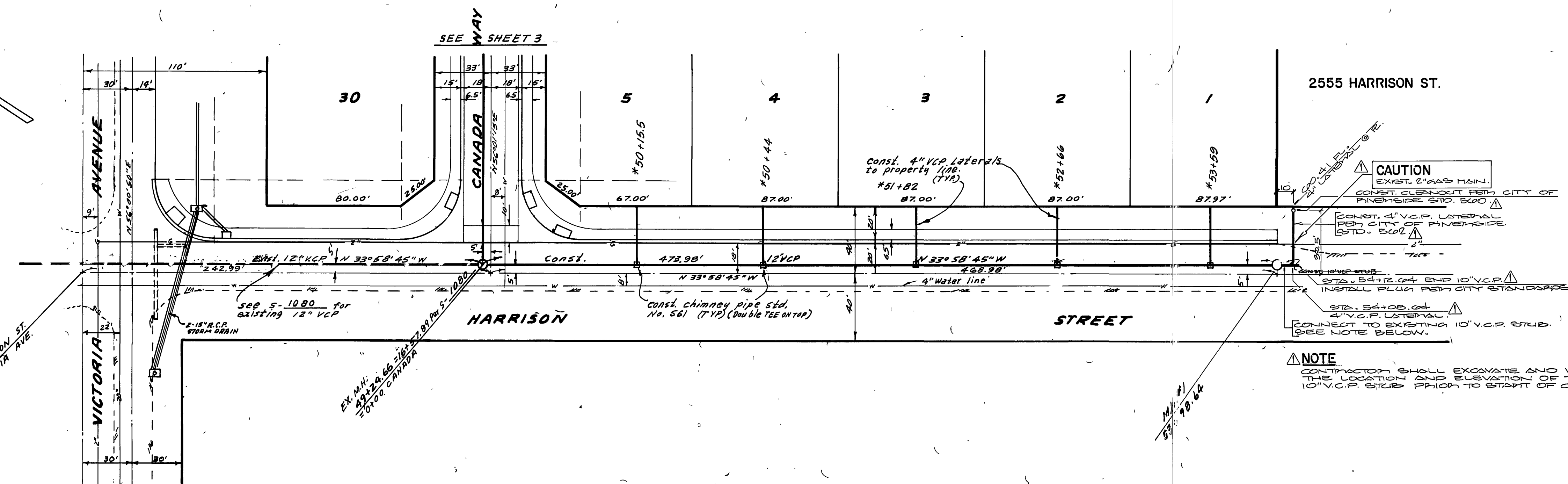
845

875

865



47 48 49 50 51 52 53 54



CONSTRUCT 12 L.F. OF 10" V.C.P.
AT 2.26%.

CAUTION
EXIST. 2" GAS MAIN.
CONST. SLEWOUT FROM CITY OF RIVERSIDE STD. 500.
CONST. 4" V.C.P. LATERAL FROM CITY OF RIVERSIDE STD. 500.
INSTALL PLUG PER CITY STANDARDS.
CONNECTION TO EXISTING 10" V.C.P. STD. (SEE NOTE BELOW).

NOTE
CONTRACTOR SHALL EXCAVATE AND VERIFY THE LOCATION AND ELEVATION OF THE EXISTING 10" V.C.P. STD. PRIOR TO START OF CONSTRUCTION.

BENCH MARK:
E4-G 1/2" I.P. capped @ intersection of Victoria Ave. and Harrison St. Elev. 856.399

*AS BUILT 8177 KBT



UNDELLER
LAND SURVEYING AND MAPPING
6104 RIVERSIDE AVENUE SUITE 8
RIVERSIDE, CA 92506
(714) 662-2216

AS TO REVISION/A
PLANS PREPARED UNDER THE SUPERVISION OF:
[Signature]
DATE 11.0.02

APPROVED BY:
[Signature]
CHIEF UTILITIES ENGINEER, WATER
10-19-74
DATE

ALBERT A. WEBB ASSOCIATES
CIVIL ENGINEERS
RIVERSIDE, CALIFORNIA

APPROVED BY: *[Signature]* DATE 10-14-74
R.E. No. 16056

W.O. 74-61 FOR: *[Signature]* CONTRACTORS INC. F.B. 1031

DESIGNED BY: BEL	DRAWN BY: BEL	CHECKED BY:
REVISIONS	APPR. DATE	

CITY OF RIVERSIDE, CALIFORNIA
PUBLIC WORKS DEPARTMENT

APPROVED BY: *[Signature]* DATE 5-2-77
PRINCIPAL ENGINEER
TRAFFIC DIVISION
CHIEF PUB. WKS. ENGR.

SEWER PLAN AND PROFILE
HARRISON STREET
TRACT 5935

SCALE: 1"=40' Horiz, 1"=4' Vert.

ACCOUNT No.
DRAWING NUMBER
S-1075

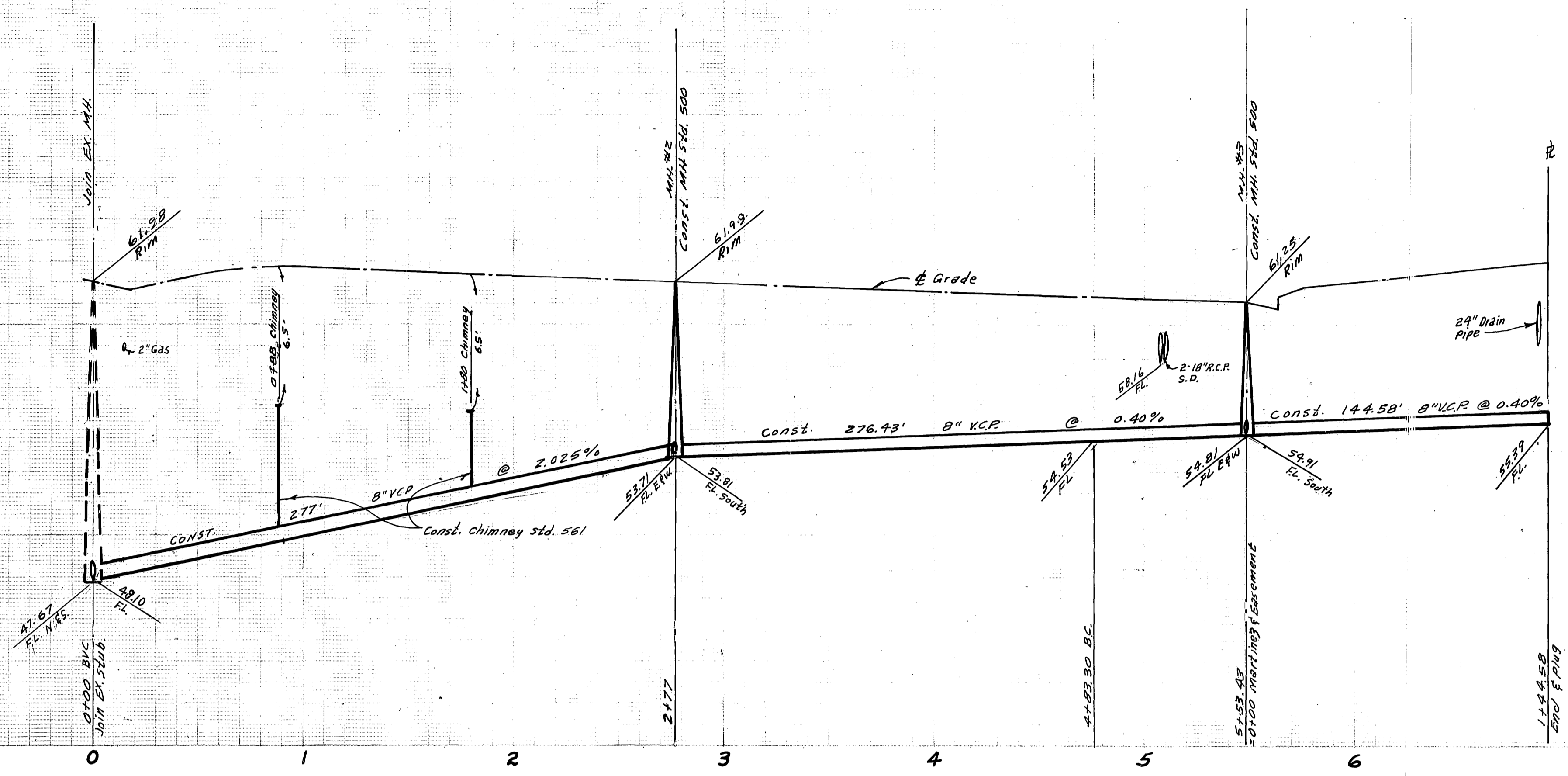
SHEET 2 OF 4
74-61-B

860

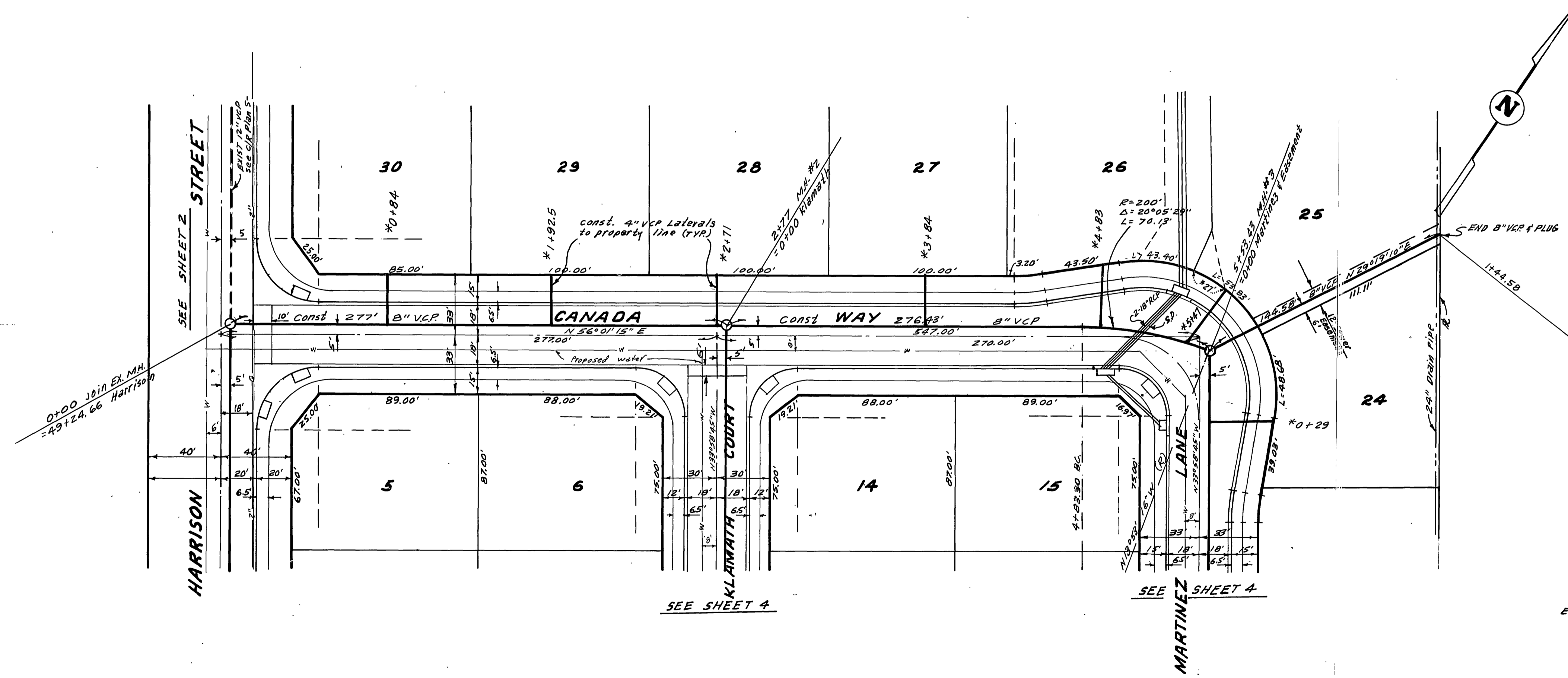
850

860

850



see sheet 1 for General Notes.



BENCH MARK:
 EA-G 1/2" I.P. capped @ intersection of Victoria Ave. and Harrison St. Elev. 856.399

*AS BUILT 8-77 KPT

APPROVED BY:
Wesley Hylan
 CHIEF UTILITIES ENGINEER, WATER DATE 10-19-76

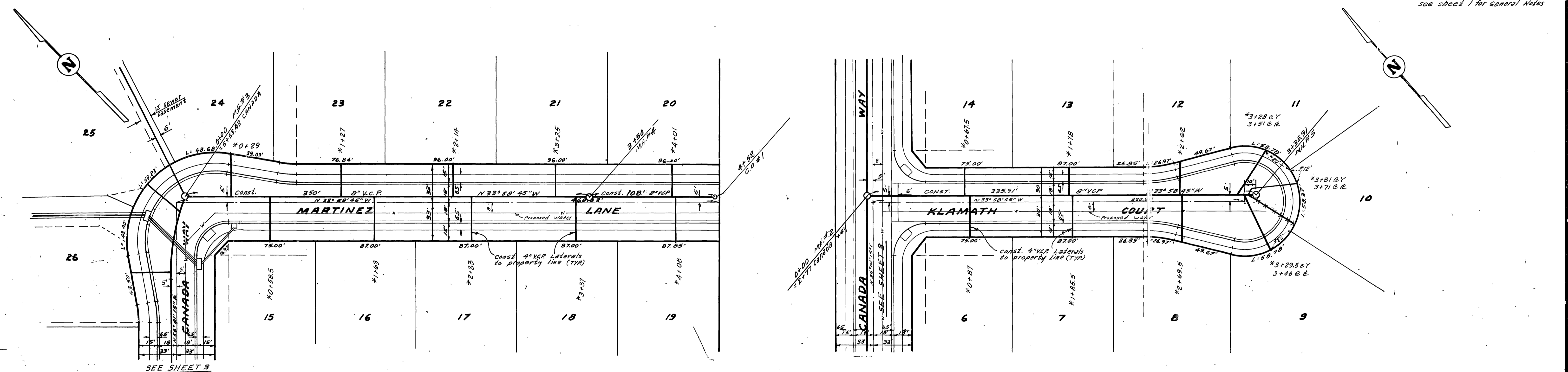
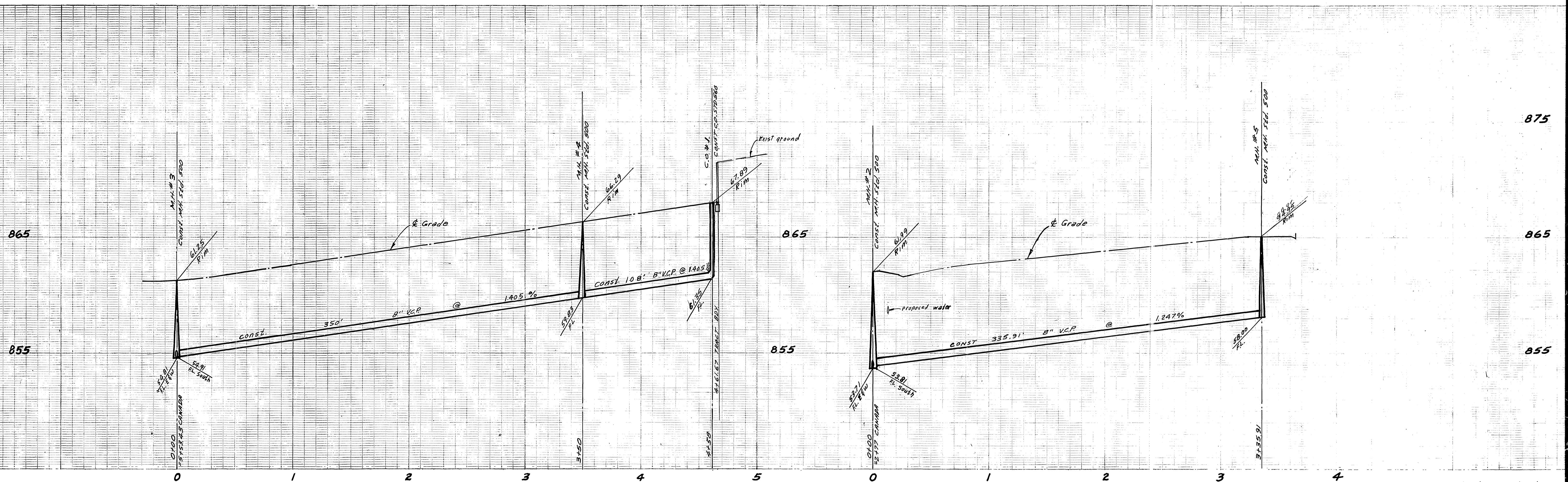
ALBERT A. WEBB ASSOCIATES
 CIVIL ENGINEERS
 RIVERSIDE, CALIFORNIA
 APPROVED BY: *D. W. Mansfield* DATE 10-19-76
 R.E. No. 16056

MARK REVISIONS APPR. DATE
 DESIGNED BY: *DEL* DRAWN BY: *DEL* CHECKED BY: *DEL*

CITY OF RIVERSIDE, CALIFORNIA
 PUBLIC WORKS DEPARTMENT
 APPROVED BY: *[Signature]*
 DIRECTOR OF PUBLIC WORKS
 DATE 11-2-77

SEWER PLAN AND PROFILE
CANADA WAY
 & EASEMENT
 TRACT 5935
 SCALE: 1" = 40' Horiz, 1" = 4' Vert.

ACCOUNT No.
 DRAWING NUMBER
S-1075
 SHEET 3 OF 4
74-61-B



see sheet 1 for general notes

BENCH MARK:
 E4-G 1/2" I.P. Copied @ intersection of Victoria Ave. and Harrison St. Elev. 856.393

*AS BUILT 8-77 MET

APPROVED BY: *[Signature]* 10-19-76
 CHIEF UTILITIES ENGINEER, WATER DATE

ALBERT A. WEBB ASSOCIATES
 CIVIL ENGINEERS
 RIVERSIDE, CALIFORNIA
 APPROVED BY: *[Signature]* DATE: 10-19-76
 R.E. No. 16056

CITY OF RIVERSIDE, CALIFORNIA
 PUBLIC WORKS DEPARTMENT
 APPROVED BY: *[Signature]* DATE: 5-2-77
 PRINCIPAL ENGINEER
 PARK DEPARTMENT
 TRAFFIC DIVISION
 CHIEF PUB. WKS. ENGR.

APPROVED BY: *[Signature]* DATE: 5-2-77
 DIRECTOR OF PUBLIC WORKS

SEWER PLAN AND PROFILE
 MARTINEZ LANE
 KLAMATH COURT
 TRACT 5935
 SCALE: 1" = 40' Horiz., 1" = 4' Vert.

ACCOUNT No.
 DRAWING NUMBER
 5-1075
 SHEET 4 OF 4
 74-61-B