

GENERAL NOTES

1. IT SHALL BE THE RESPONSIBILITY OF THE CONTRACTOR TO CLEAR THE RIGHT OF WAY IN ACCORDANCE WITH THE PROVISIONS OF LAW AS IT AFFECTS EACH UTILITY INCLUDING IRRIGATION LINES AND APPURTENANCES AND AT NO COST TO THE CITY.
2. CONSTRUCTION SHALL BE IN ACCORDANCE WITH THE CITY OF RIVERSIDE, DEPT. PUBLIC WORKS, STANDARD DRAWINGS, AND THE STANDARD SPECIFICATIONS FOR PUBLIC WORKS CONSTRUCTION, 1976 EDITION.
3. LOCATION OF LATERALS TO BE DETERMINED IN THE FIELD AT THE DIRECTION OF THE OWNER. AVOID CONFLICT WITH PROPOSED AND OR EXISTING FACILITIES.
4. CONTRACTOR IS TO VERIFY EXISTING SEWER ELEVATION PRIOR TO CONSTRUCTION.
5. THE SEWER CONTRACTOR SHALL ADJUST MANHOLES TO FINAL GRADE AFTER PAVING IS COMPLETED.
6. A PLUG SHALL BE INSTALLED AND WILL REMAIN IN PLACE WHERE THE NEW SEWER CONNECTS WITH THE EXISTING SEWER UNTIL THE NEW SEWER IS ACCEPTED BY THE CITY.
7. MANHOLES TO BE CONSTRUCTED PER STANDARD DRAWING 500.
8. SEWER CLEAN OUT TO BE CONSTRUCTED PER STANDARD DRAWING NO 500.

VICINITY MAP

NOTE:

"The private engineer signing these plans is responsible for assuring the accuracy and acceptability of the work hereon. In the event of discrepancies arising during construction as a result of errors or omissions, the private engineer shall be responsible for determining an acceptable solution and revising the plans for approval by the City"

BENCH MARK
 CITY OF RIVERSIDE, BM. F.S.-H
 FOUND BY: MAIL AND TAG CO.
 RIVERSIDE WATER COMPANY
 CANAL HEADWALL ON WLY. SIDE
 Mouroe Street, C/R F.B. 839/33
 ELEV. = 545.60

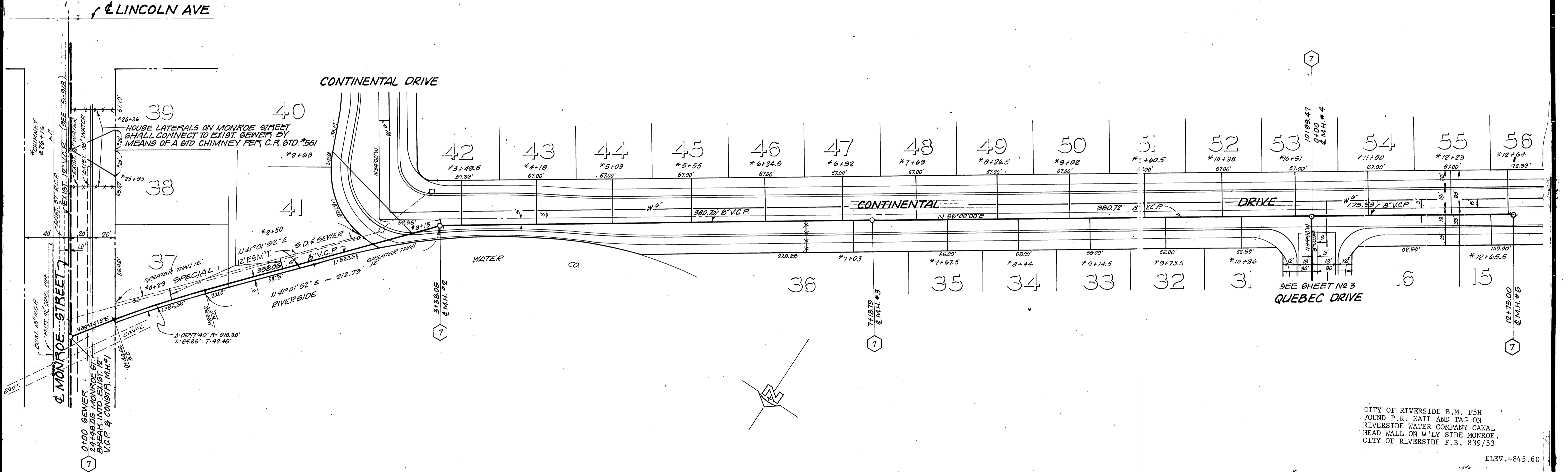
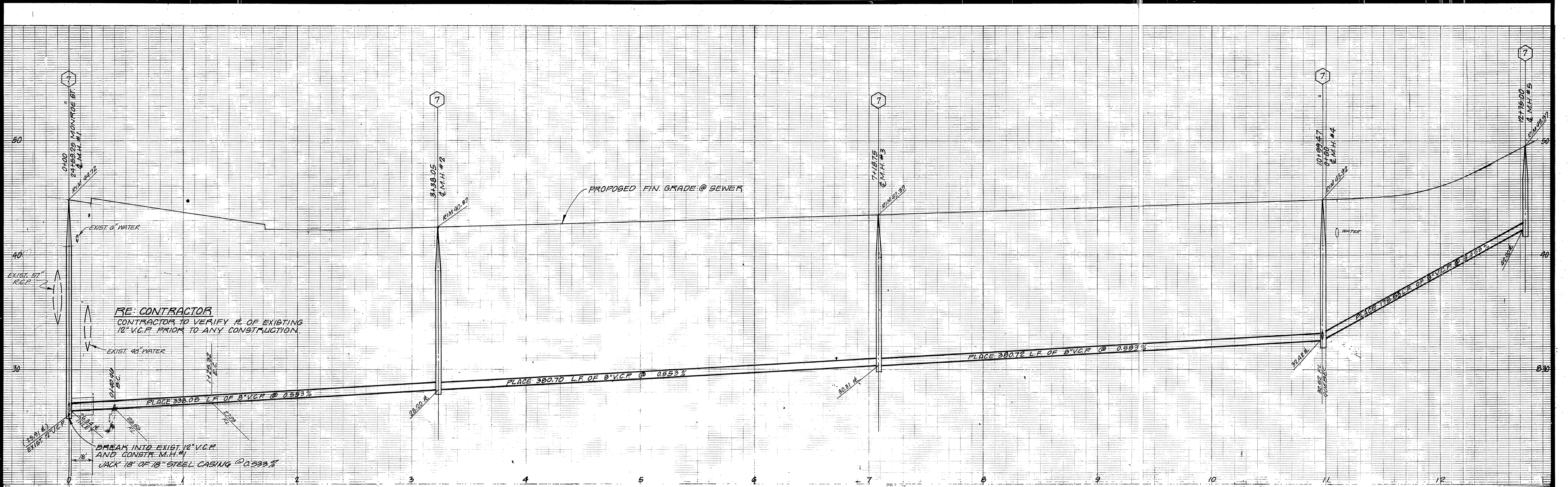
APPROVED BY:

 MARK J. ALLEN
 CHIEF UTILITIES ENGINEER, WATER
 DATE: 4-1-77

J. F. DAVIDSON ASSOCIATES
 CIVIL ENGINEERS - SURVEYORS - PLANNERS
 RIVERSIDE, CALIFORNIA
 APPROVED BY:
 DATE: 11/9/76
 R.E. No. 17550
 W.O. 4918 FOR: WOODHAVEN DEV. CO. F.B. 1106

DESIGNED BY	DRAWN BY	CHECKED BY	DATE
			4-8-77

*AS BUILT 8-77 KPT		INDEXED (R)
CITY OF RIVERSIDE, CALIFORNIA DEPARTMENT OF PUBLIC WORKS		PROJECT NO. 5-1070
TITLE SHEET TRACT 8266 SEWER PLANS		SHEET 1 OF 4
APPROVED BY: DIRECTOR OF PUBLIC WORKS DATE: 4-9-77		FILE NO. 5516
HORIZ. SCALE: 1" = 100'		VERT. SCALE: 1" = 10'



CITY OF RIVERSIDE B.M. F5H
 FOUND P.K. NAIL AND TAG ON
 RIVERSIDE WATER COMPANY CANAL
 HEAD WALL ON W'LY SIDE MONROE.
 CITY OF RIVERSIDE F.B. 839/33

ELEV. = 845.60

*AS BUILT 8-77 KPT

APPROVED BY:
Walter J. Hill
 CHIEF UTILITIES ENGINEER, WATER
 DATE: 4-1-77

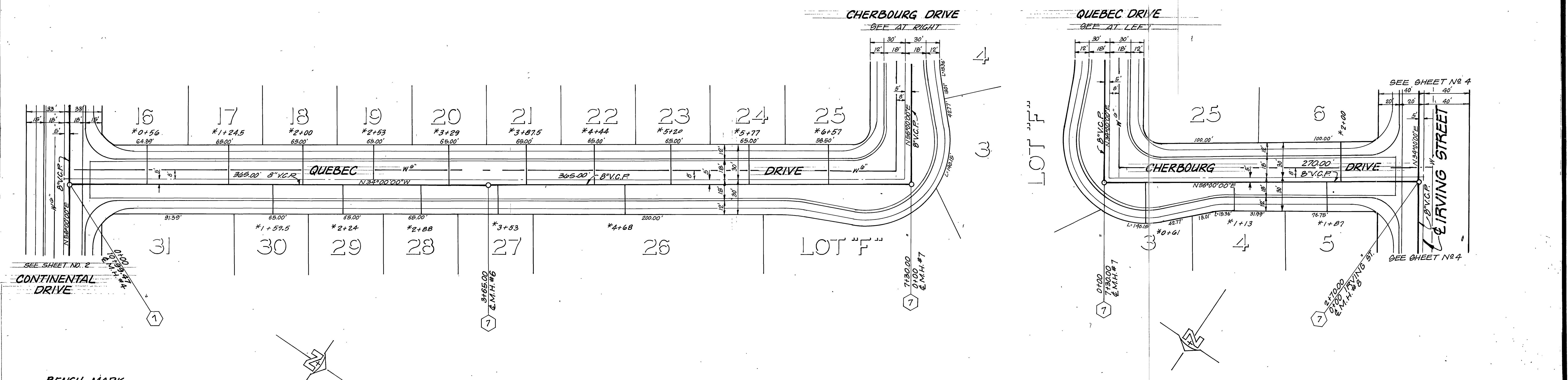
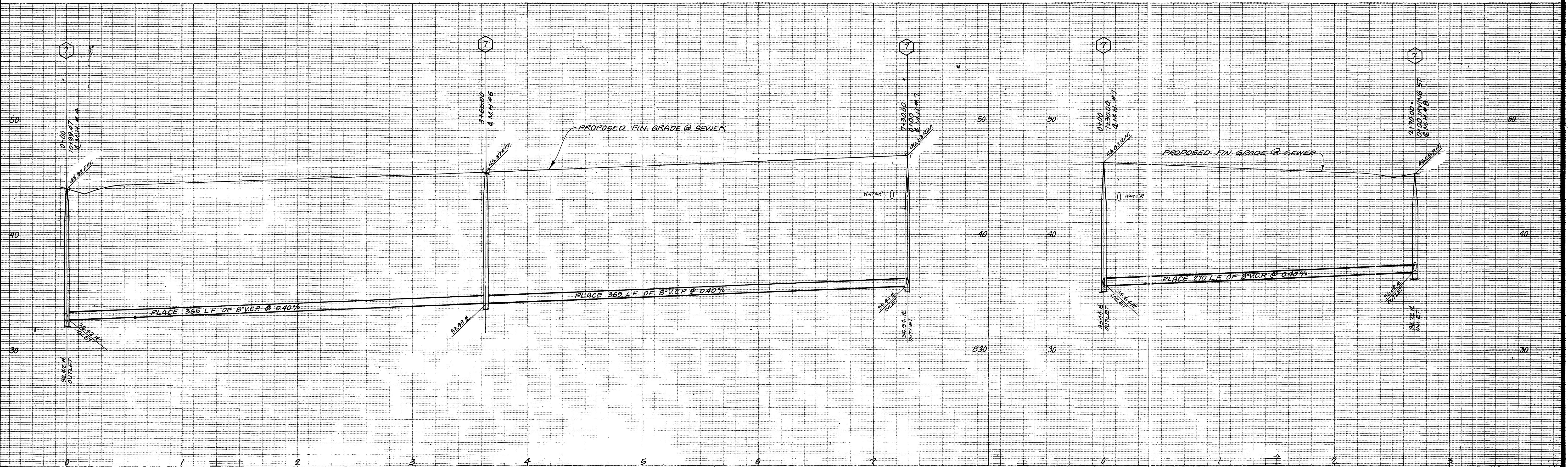
J. F. DAVIDSON ASSOCIATES
 CIVIL ENGINEERS - SURVEYORS - PLANNERS
 RIVERSIDE, CALIFORNIA
 APPROVED BY: *John W. Davidson*
 R.E. No. 17550
 DATE: 4/1/77
 W.O. 4918 FOR WOODHAVEN DEV. CO. F.B. 1106

MARK REVISIONS APPR. DATE
 DESIGNED BY: DRAWN BY: CHECKED BY: *BM*

CITY OF RIVERSIDE, CALIFORNIA
 DEPARTMENT OF PUBLIC WORKS
 APPROVED BY: *John W. Davidson*
 PRINCIPAL ENGINEER
 PARK DEPARTMENT
 TRAFFIC DIVISION
 CHIEF P. W. ENGR.
 DATE: 4-8-77

SEWER PLAN - PROFILE
TRACT 8266
CONTINENTAL DRIVE
 HORIZ. SCALE: 1" = 40'
 VERT. SCALE: 1" = 4'

PROJECT NO. S-1076
 SHEET 2 OF 4
 FILE NO. 8510



BENCH MARK
 CITY OF RIVERSIDE B.M. F-5-H
 FOUND F.R. MAIL AND TAG ON
 RIVERSIDE WATER COMPANY
 CANAL HEADWALL ON W. SIDE
 MONROE STREET, C/O F.B. 889, 893
 ELEV. 845.00

APPROVED BY:
[Signature]
 CHIEF UTILITIES ENGINEER, WATER
 DATE 4-1-77

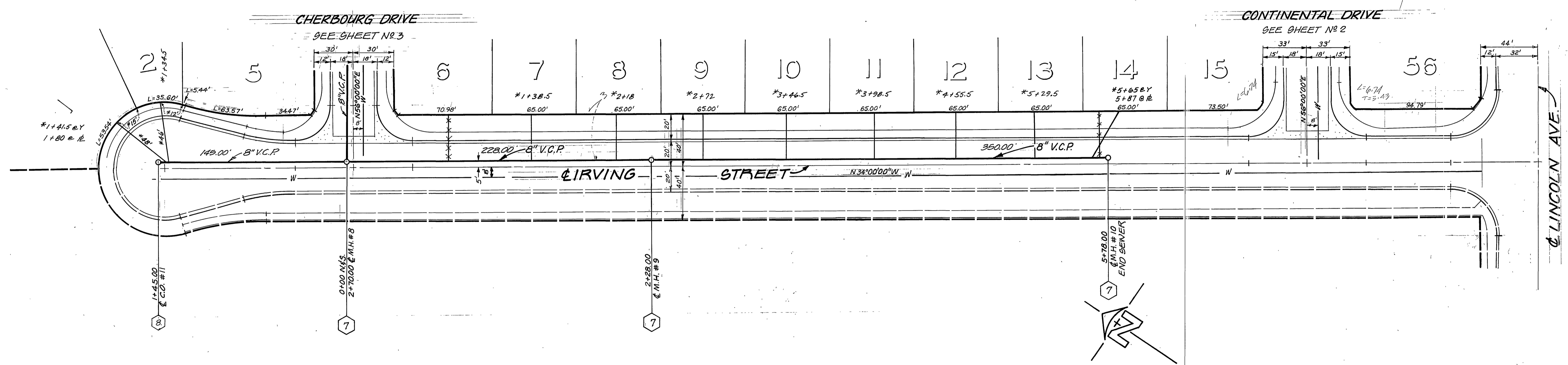
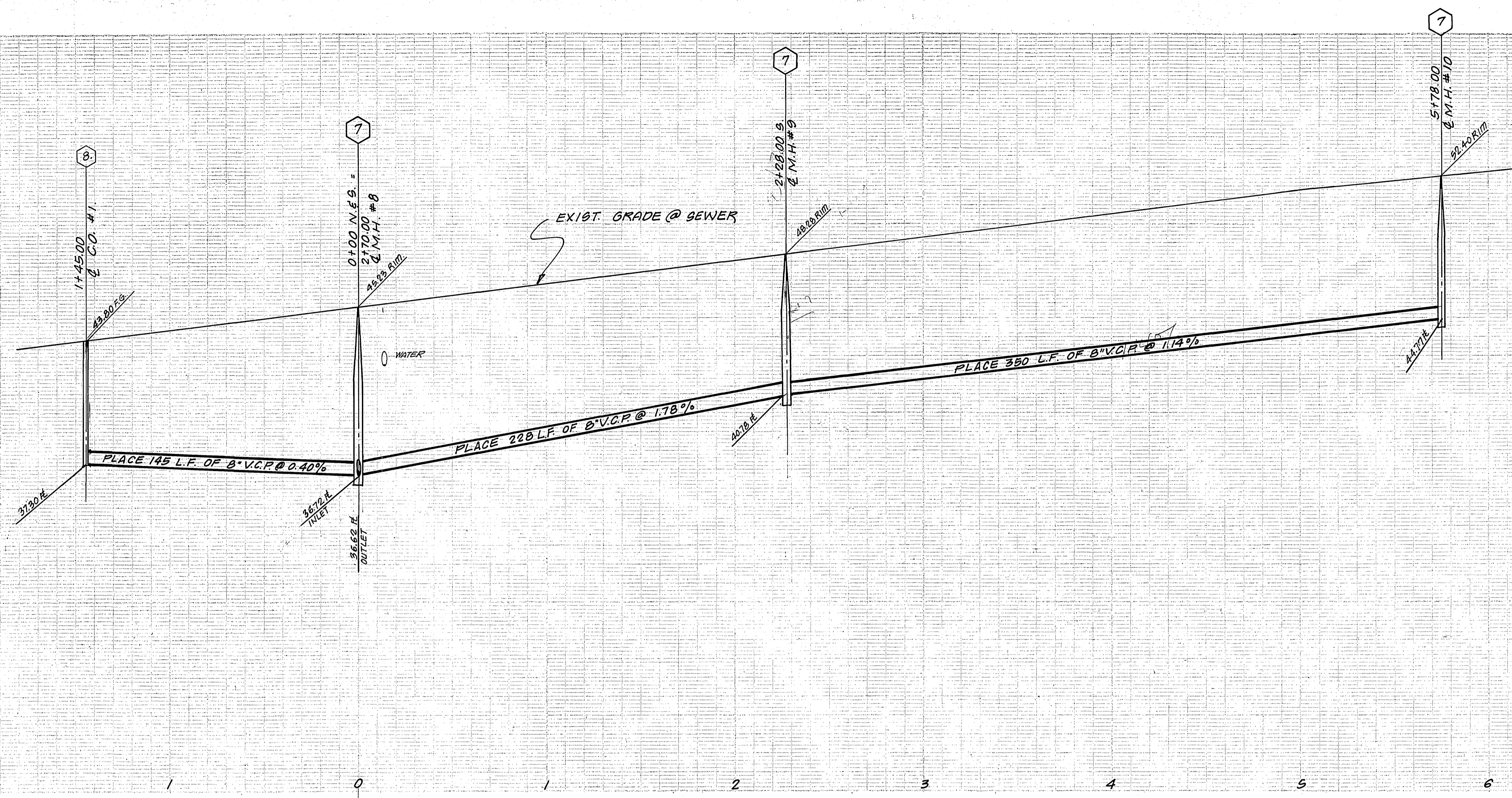
J. F. DAVIDSON ASSOCIATES
 CIVIL ENGINEERS - SURVEYORS - PLANNERS
 RIVERSIDE, CALIFORNIA
 APPROVED BY: *[Signature]* DATE 11/19/76
 R.E. No. 17550
 W.O. 4918 FOR WOODHAVEN DEV. CO. F.B. 1100

MARK	REVISIONS	APPR. DATE

CITY OF RIVERSIDE, CALIFORNIA
 DEPARTMENT OF PUBLIC WORKS
 APPROVED BY: *[Signature]* DATE 4-9-77
 DIRECTOR OF PUBLIC WORKS
 CHIEF P. W. ENGR. *[Signature]*

SEWER PLAN - PROFILE
TRACT 8266
CHERBOURG DRIVE
QUEBEC DRIVE
 HORIZ. SCALE: 1" = 40'
 VERT. SCALE: 1" = 4'

PROJECT NO. **9-1076**
 SHEET **3** OF **4**
 FILE NO. **5516**



BENCH MARK
 CITY OF RIVERSIDE B.M. F-5-N
 FOUND ON MAIL AND TAG ON
 RIVERSIDE WATER COMPANY
 CANAL HEAD WALL ON WLY SIDE
 MOURDE STREET, C/R P.B. 999/33
 ELEV. 845.00

APPROVED BY:
Windy Ojala
 CHIEF UTILITIES ENGINEER, WATER
 DATE 4-1-77

J. F. DAVIDSON ASSOCIATES
 CIVIL ENGINEERS - SURVEYORS - PLANNERS
 RIVERSIDE, CALIFORNIA
 APPROVED BY: *John W. Canty* DATE 11/17/76
 (R.E. No. 17550)
 W.O. 998 FOR WOODHAYEN DEV. CO. F.B. 1100

MARK	REVISIONS	APPR. DATE

CITY OF RIVERSIDE, CALIFORNIA
 DEPARTMENT OF PUBLIC WORKS
 APPROVED BY: *John W. Canty* DATE 11/17/76
 PRINCIPAL ENGINEER
 PARK DEPARTMENT
 TRAFFIC DIVISION
 CHIEF P. W. ENGR. *W. J. ...* DATE 4-8-77

*AS BUILT 8-77 K2T
 -SEWER PLAN-PROFILE
 TRACT 8266
 IRVING STREET
 HORIZ. SCALE: 1" = 40' VERT. SCALE: 1" = 4'
 INDEXED P.L.
 PROJECT NO. 5-1076
 SHEET 4 OF 4
 FILE NO. 5516