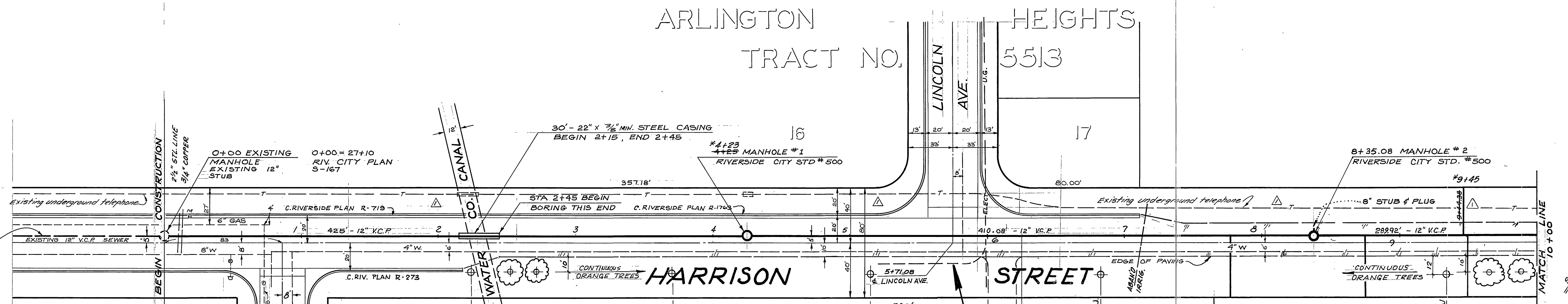


B.M. E-4-G 1/4" IP IN CAPPED WELL
 VICTORIA & HARRISON ELEV. 856.40

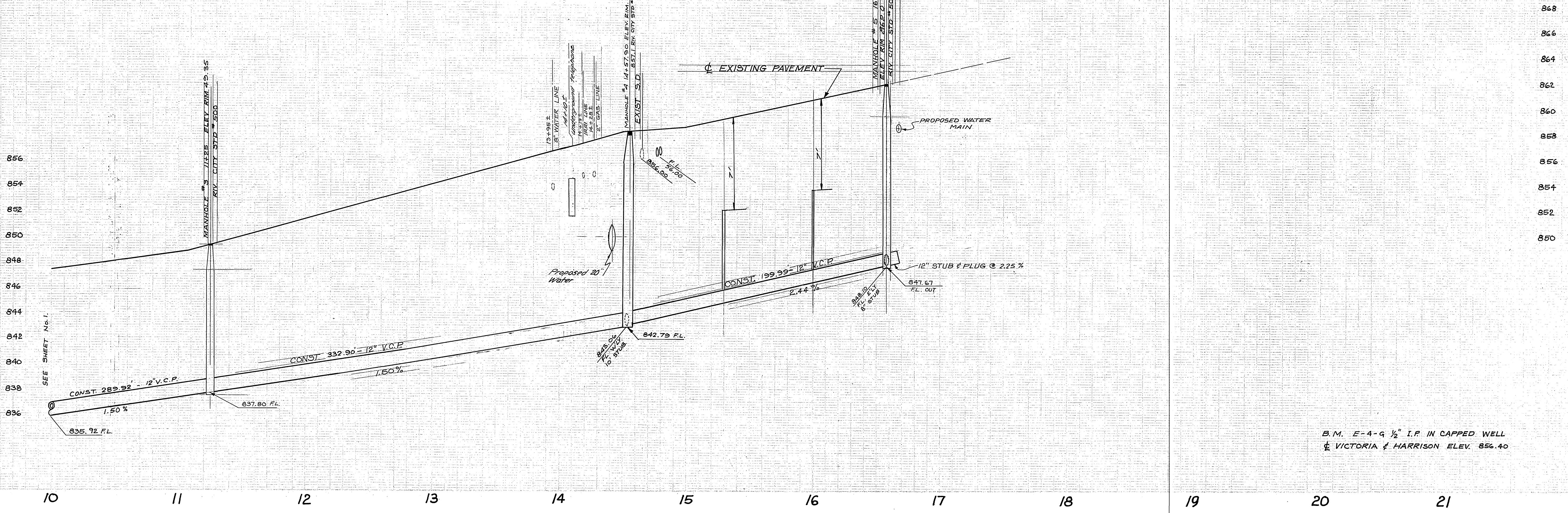
ARLINGTON TRACT NO. 5513



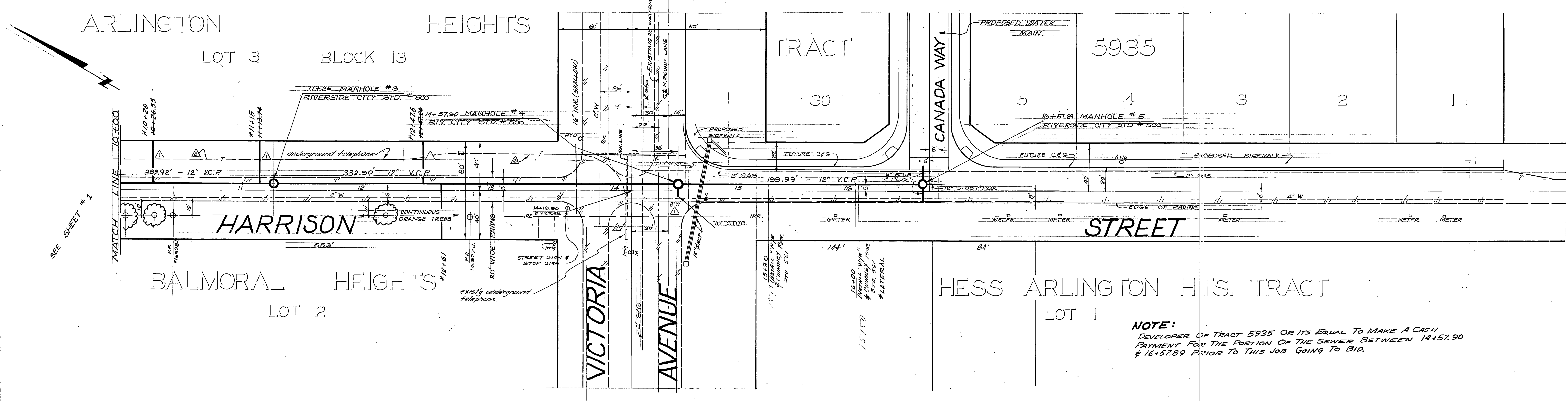
- GENERAL NOTES**
- CONSTRUCTION SHALL BE IN ACCORDANCE WITH THE CITY OF RIVERSIDE, DEPARTMENT OF PUBLIC WORKS STANDARDS AND THE STANDARD SPECIFICATIONS FOR PUBLIC WORKS CONSTRUCTION, 1976 EDITION.
 - THE FOLLOWING STANDARD DRAWINGS APPLY:
 452 PIPE BEDDING CASE I
 453 TRENCH BACKFILL
 500 MANHOLE
 562 LATERAL
 561 CHIMNEY
 - ALL M.H. TO BE CONST. PER STD. 500
 - SEWER TO REMAIN PLUGGED AT EX. M.H. UNTIL ACCEPTED BY CITY.
 - CONTRACTOR TO PROVIDE CONSTRUCTION SIGNING PER "CALIFORNIA MANUAL OF SIGNS, LIGHTS AND DEVICES" FOR USE IN PERFORMANCE OF WORK UPON HIGHWAYS.
 - THE PRIVATE ENGINEER SIGNING THESE PLANS IS RESPONSIBLE FOR THE ACCURACY AND ACCEPTABILITY OF THE WORK HEREON. IN THE EVENT OF DISCREPANCIES ARISING DURING CONSTRUCTION THE PRIVATE ENGINEER SIGNING THE PLANS SHALL BE RESPONSIBLE FOR DETERMINING AN ACCEPTABLE SOLUTION AND REVISING THE PLANS FOR APPROVAL BY THE CITY.

CAUTION
 ELECTRICAL UGROUNDS.
 CONTACT CITY OF RIVERSIDE PUBLIC UTILITIES DEPT. (714) 787-7422 24 HOURS PRIOR TO CONST IN THIS AREA.

APPROVED BY <i>Wesley Hylton</i> RIVERSIDE WATER CO. DATE 2-1-77	APPROVED BY <i>Wesley Hylton</i> CHIEF UTILITIES ENG., WATER DATE 2-1-77	J. F. DAVIDSON ASSOCIATES CIVIL ENGINEERS - SURVEYORS - PLANNERS RIVERSIDE, CALIFORNIA APPROVED BY <i>Robert J. Davidson</i> DATE 1-11-76 R.E. No. 136891 W.O. 6041 FOR CITY OF RIVERSIDE F.B. 1108/21	CITY OF RIVERSIDE, CALIFORNIA DEPARTMENT OF PUBLIC WORKS APPROVED BY <i>Robert J. Davidson</i> DATE 2-1-77 PARK DEPARTMENT TRAFFIC DIVISION CHIEF P. W. ENGR. DATE 3/24/77	SEWER PLAN AND PROFILE HARRISON STREET SEWER EXTENSION FOR TRACT 5935 HORIZ. SCALE: 1" = 40' VERT. SCALE: 1" = 4' INDEXED ET PROJECT NO. S-1080 SHEET 1 OF 2 FILE NO. 5519
--	--	--	---	---



B.M. E-4-G 1/2" I.P. IN CAPPED WELL
 @ VICTORIA & HARRISON ELEV. 856.40



NOTE:
 DEVELOPER OF TRACT 5935 OR ITS EQUAL TO MAKE A CASH PAYMENT FOR THE PORTION OF THE SEWER BETWEEN 14+57.90 & 16+57.89 PRIOR TO THIS JOB GOING TO BID.

J. F. DAVIDSON ASSOCIATES CIVIL ENGINEERS • SURVEYORS • PLANNERS 3426 TENTH STREET RIVERSIDE, CALIFORNIA		CITY OF RIVERSIDE, CALIFORNIA DEPARTMENT OF PUBLIC WORKS		PROJECT NO. S-1080
APPROVED BY: <i>Walter Styler</i> 2-1-77 CHIEF UTILITIES ENG., WATER		APPROVED BY: <i>[Signature]</i> PRINCIPAL ENGINEER PARK DEPARTMENT TRAFFIC DIVISION CHIEF P. W. ENGR.		SEWER PLAN & PROFILE HARRISON STREET SEWER EXTENSION FOR TRACT 5935
W.O. 5041 FOR CITY OF RIVERSIDE - FB.1108.1121		DATE: 3/24/77		SHEET 2 OF 2 FILE NO. 5519