

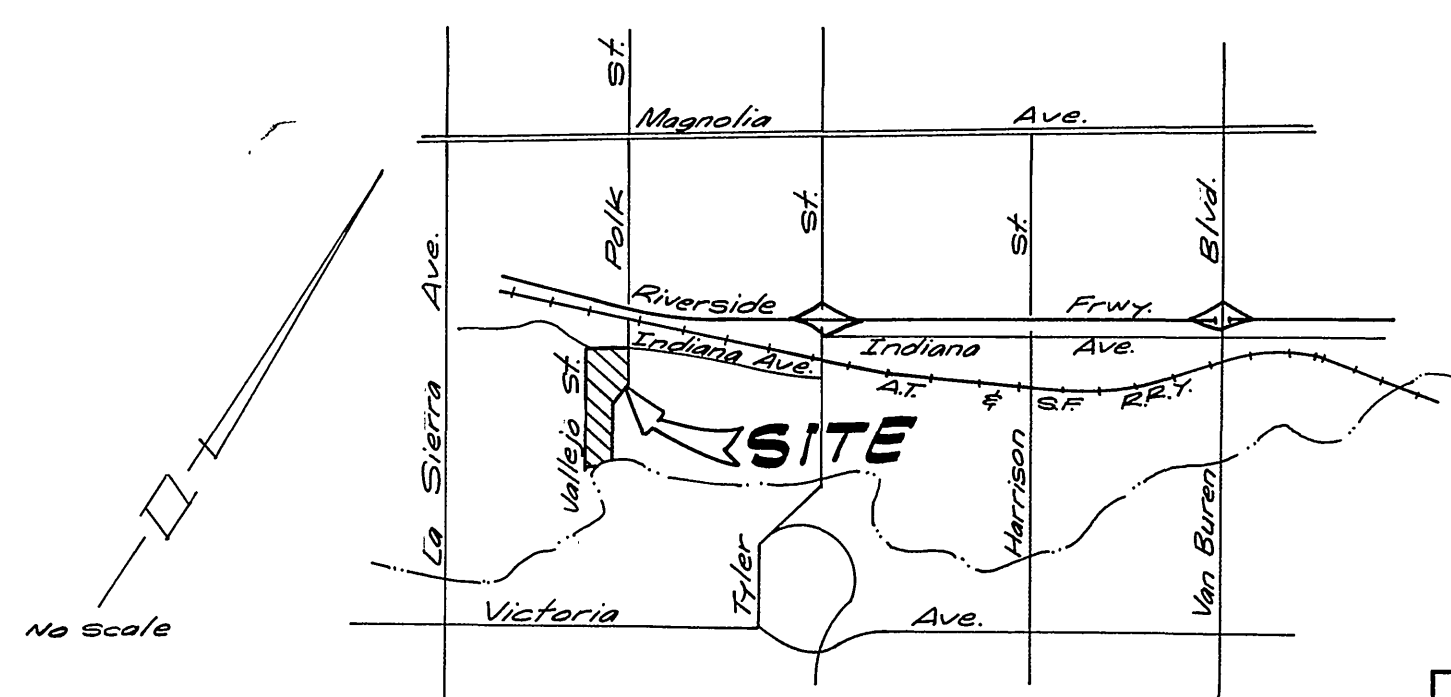
**GENERAL NOTES:**

1. Construction shall be in accordance with the standard Specifications for Public Works Construction 1976 edition and the City of Riverside Standard Drawings.
2. It shall be the responsibility of the Contractor to clear the Right of Way in accordance with the provisions of law as it affects each utility including irrigation lines and appurtenances and at no cost to the City.
3. Pipe shall be bedded per Case I, Standard Drawing No. 452, unless otherwise specified on the plans.
4. Location of wyes and laterals to be determined in the field at the direction of the owner.
5. All stubs and laterals to be constructed in accordance with Standard Drawing No. 562. Stubs shall be plugged and capped.
6. Manhole frames and covers to be set as noted in profiles by Sewer Contractor after final paving of streets.
7. Laterals are to be 4" u.c.p. and extended to property line.
8. Prior to construction of Sewer, Contractor is to expose the existing sewer and contact the Engineer for Verification of existing location and elevation.
9. Plugs shall be installed and will remain in place where the new sewer connects with the existing sewer until such time as the new sewer is accepted by the City.
10. The private engineer signing these plans is responsible for the accuracy and acceptability of the work herein. In the event of discrepancies arising during construction, the private engineer shall be responsible for determining an acceptable solution, and revising the plans for approval by the City.

**NOTICE TO CONTRACTOR**

The existence and location of underground utility pipes or structures shown on these plans are obtained by a search of the available records to the best of our knowledge there are no existing utilities except as shown on these plans.

The Contractor is required to take due precautionary measures to protect the utility lines shown and any other lines not of record or not shown on these plans.



**LOCATION MAP**

APPROVED BY: *[Signature]* 3-21-77  
 Chief Utilities Engineer, Water Date

ALBERT A. WEBB ASSOCIATES  
 CIVIL ENGINEERS  
 RIVERSIDE, CALIFORNIA

APPROVED BY: *[Signature]* DATE 12/18/76  
 R.E. No. 27106

W.O. 76-115 FOR: Facebetter F.B. 031

MARK	REVISIONS	DATE

CITY OF RIVERSIDE, CALIFORNIA  
 PUBLIC WORKS DEPARTMENT

APPROVED BY: *[Signature]* DATE 4/13/77  
 PRINCIPAL ENGINEER

APPROVED BY: *[Signature]* DATE 4/13/77  
 DIRECTOR OF PUBLIC WORKS

DESIGNED BY: M.C. DRAWN BY: R.F. CHECKED BY: J.

**SEWER PLAN & PROFILE**  
**TRACT 3111**  
**INDEX**

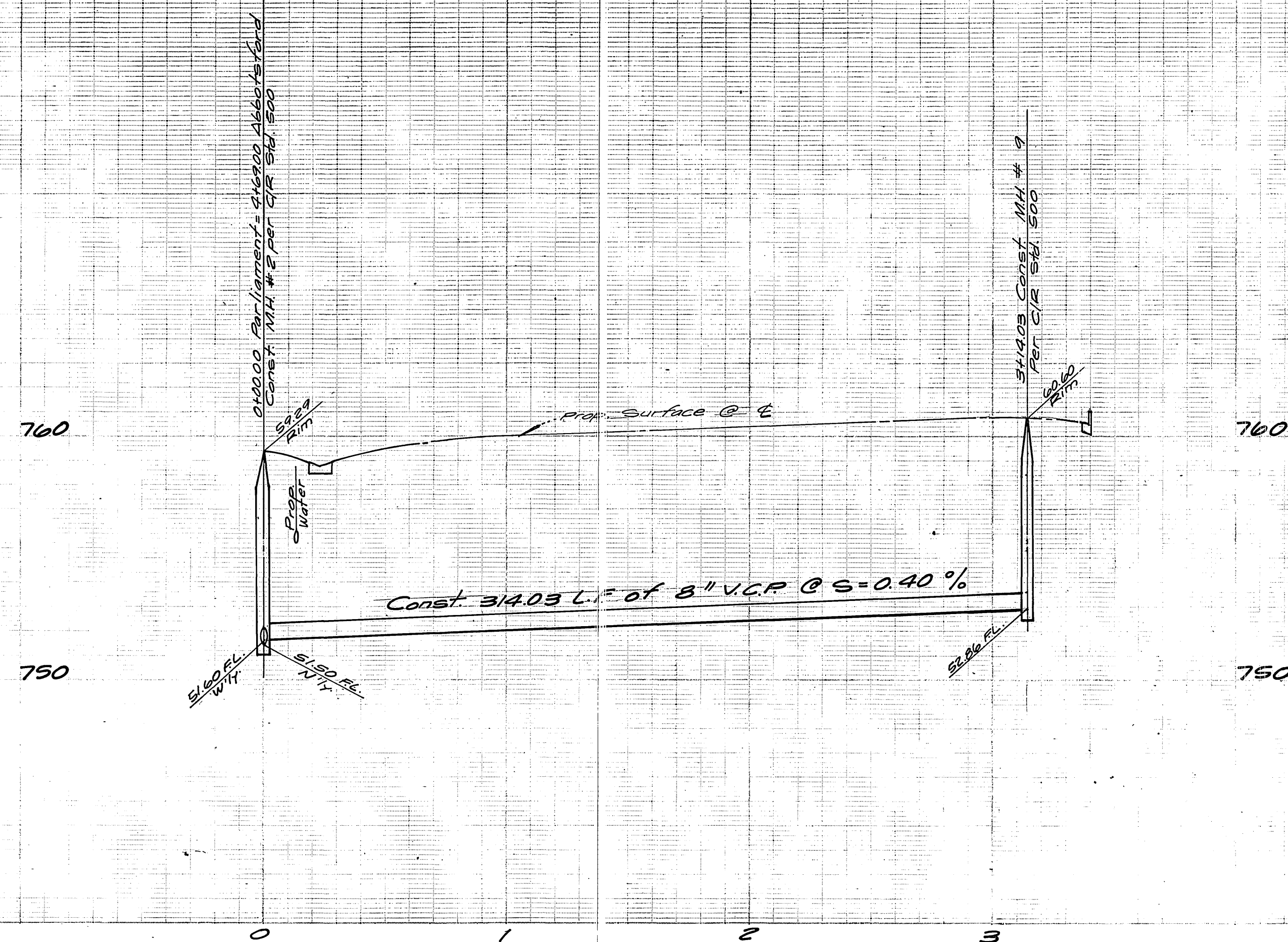
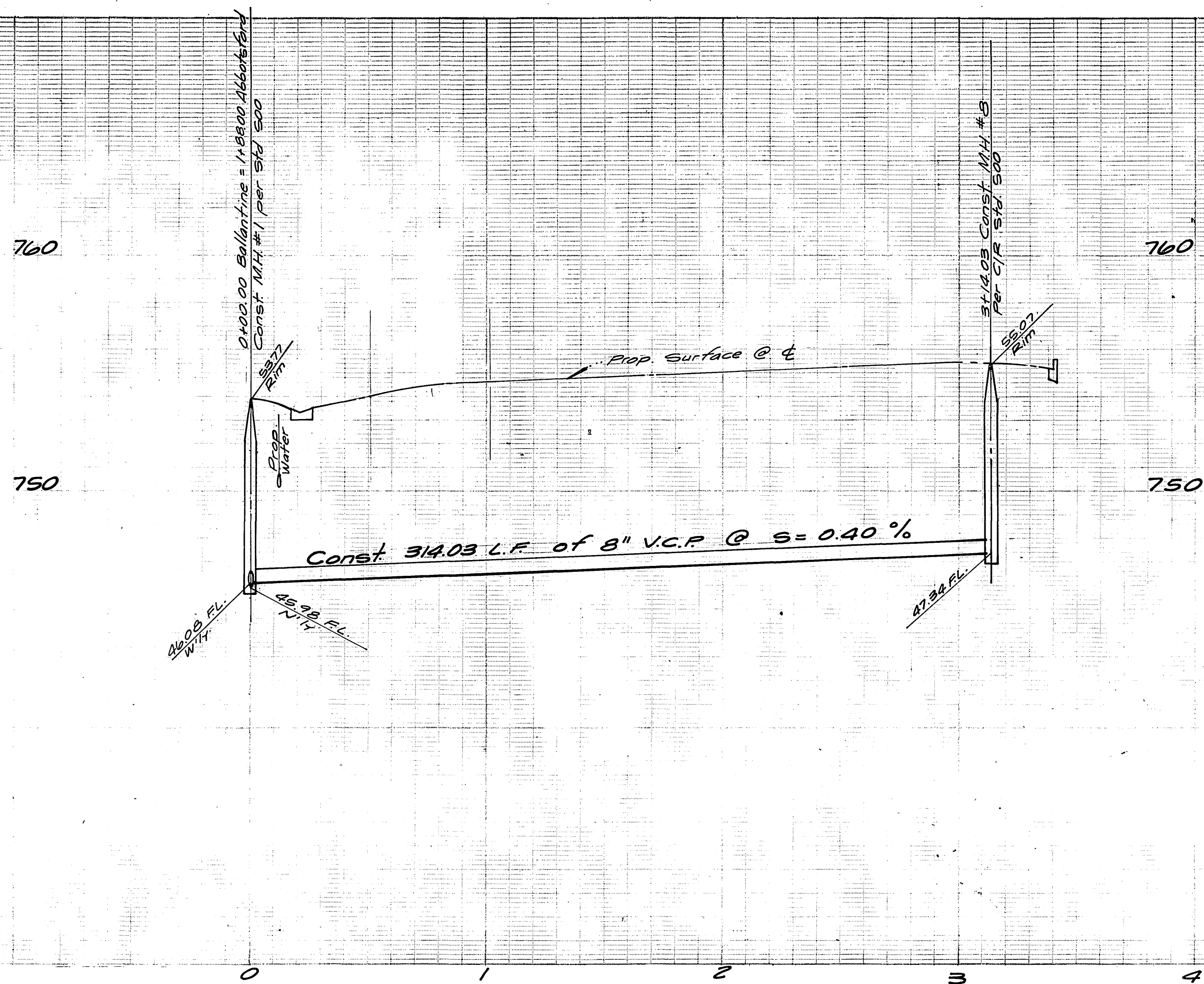
SCALE: As shown

INDEXED 7-A  
 ACCOUNT No. 5-1082  
 DRAWING NUMBER  
 SHEET 1 OF 10  
 76-115B

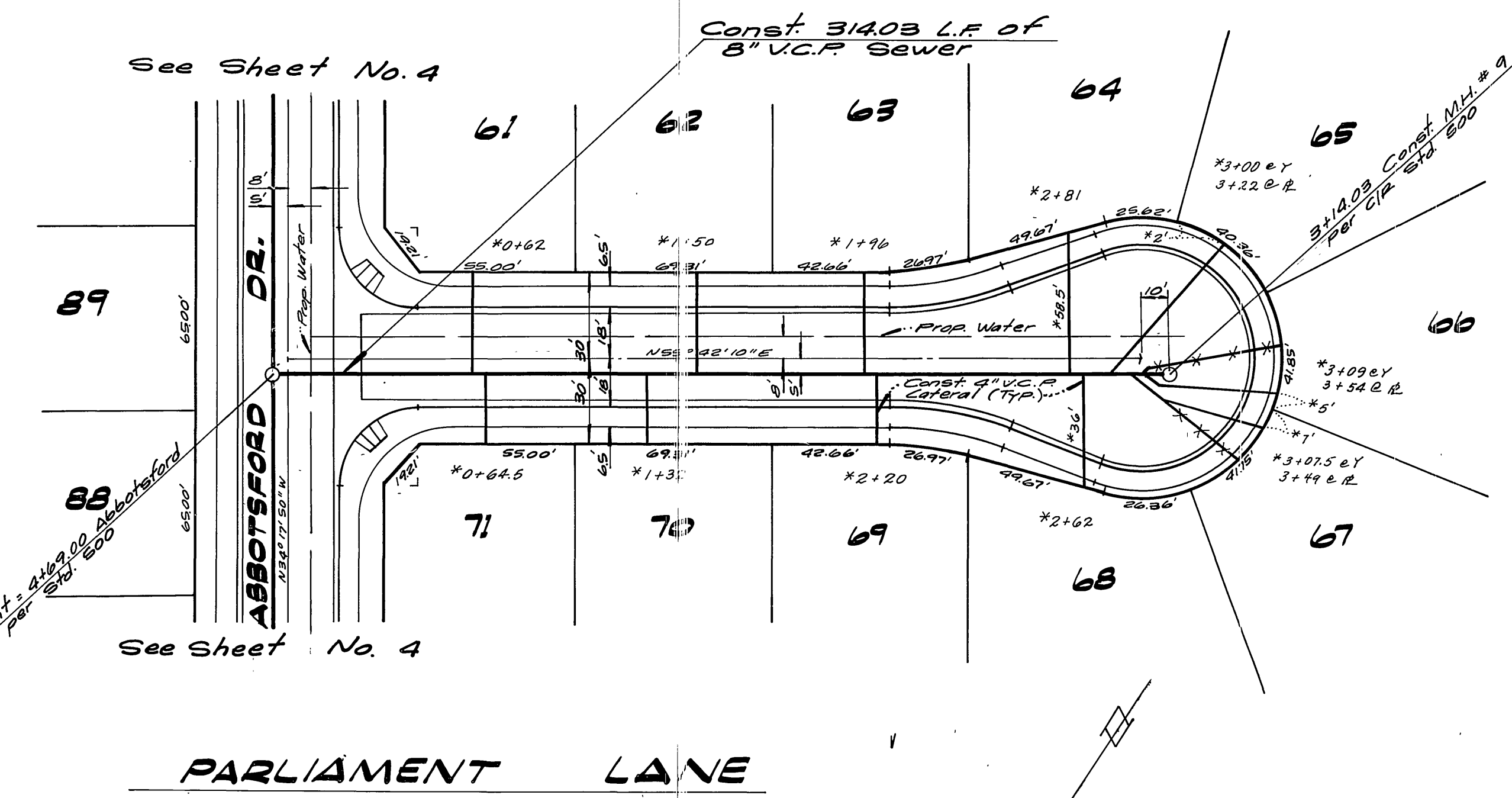
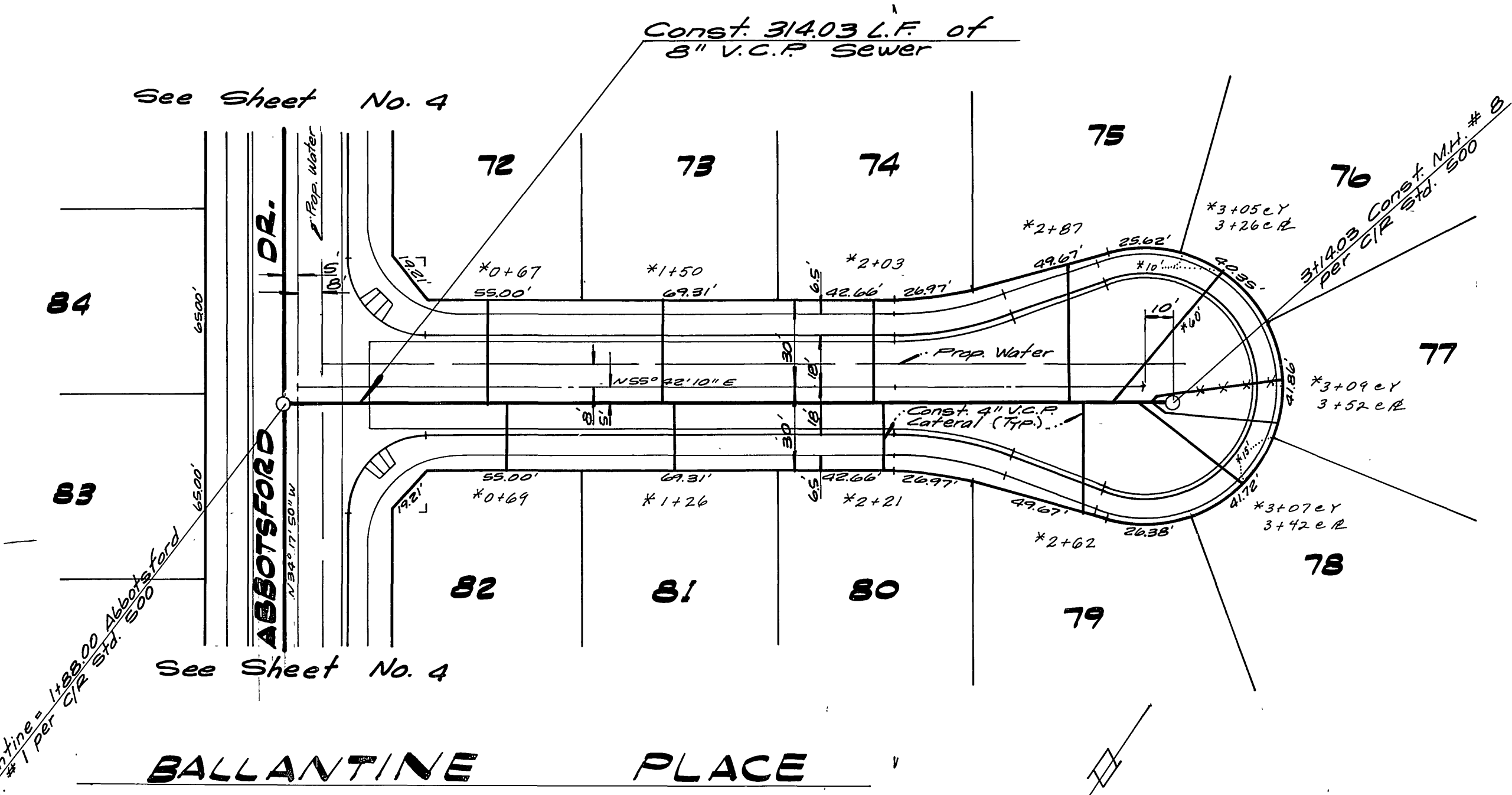
**Bench Mark:**  
 Brass Disc set in conc. stamped 60-25-68 on W. Side of Tyler St. 250' S. of Indiana Ave. & 1/4 N.E. of Bridge # 56-219 Elev. 756.665

\* AS BUILT 7-78 KET





**Bench Mark:**  
 Brass Disc Set in conc. stamped 601.25-68  
 on W. Side of Tyler St. 250' N. of  
 Indiana Ave. & 1/2 NE. of Bridge # 56-419  
 Elev. 756.665



APPROVED BY:  
*Wesley Joffe*  
 Chief Utilities Engineer, Water  
 Date: 3-31-77

ALBERT A. WEBB ASSOCIATES  
 CIVIL ENGINEERS  
 RIVERSIDE, CALIFORNIA

APPROVED BY: *[Signature]* DATE: *[Date]*  
 R.E. No. 27106

MARK REVISIONS APPR. DATE

DESIGNED BY: *[Signature]* DRAWN BY: *[Signature]* CHECKED BY: *[Signature]*

CITY OF RIVERSIDE, CALIFORNIA  
 PUBLIC WORKS DEPARTMENT

APPROVED BY: *[Signature]* DATE: 4-14  
 PRINCIPAL ENGINEER  
 PARK DEPARTMENT  
 TRAFFIC DIVISION  
 CHIEF PUB. WKS. ENGR.

SEWER PLAN & PROFILE  
 TRACT 8111  
 BALLANTINE PL.,  
 PARLIAMENT LN.

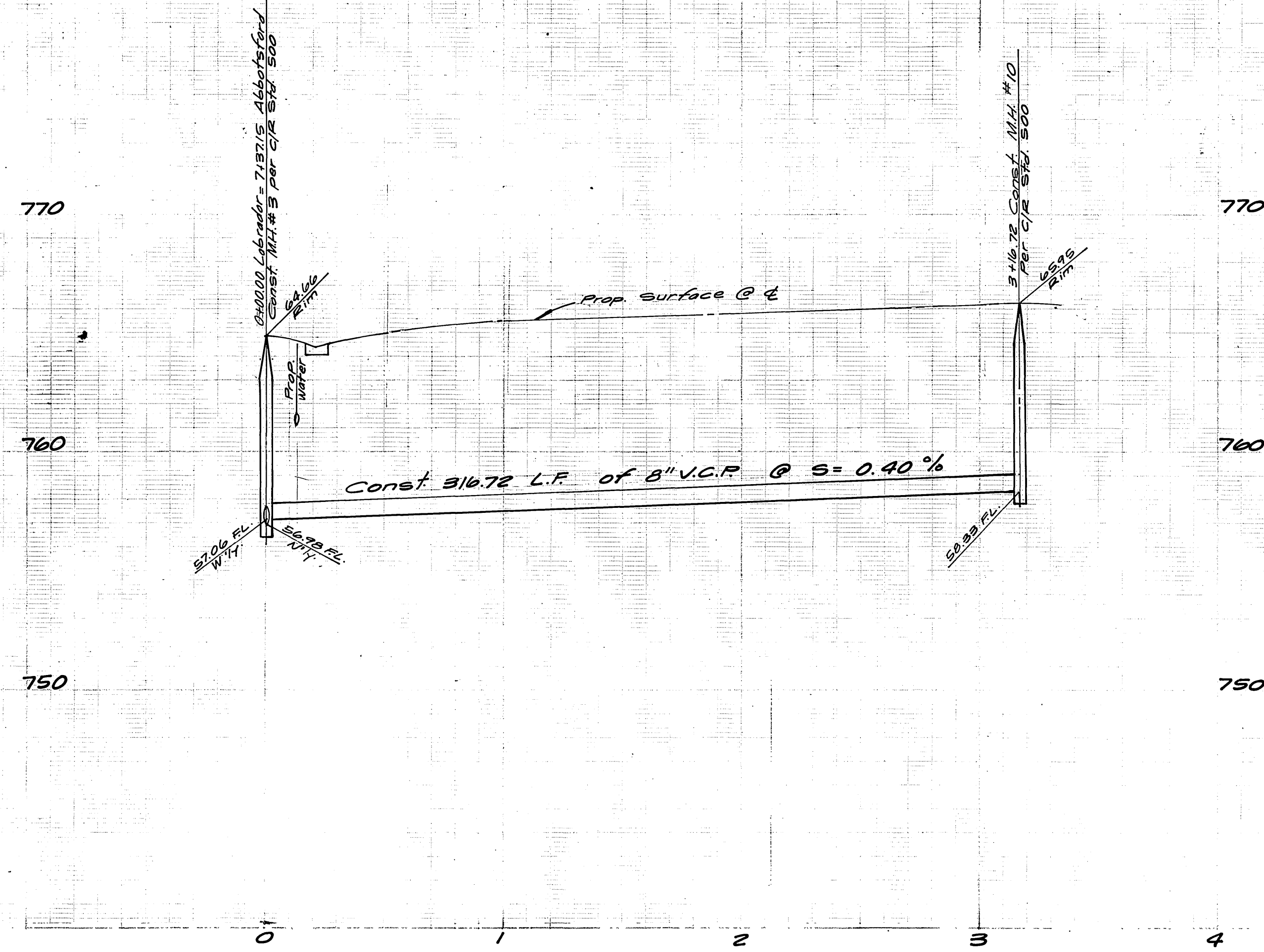
SCALE: Horiz. 1" = 40', Vert. 1" = 4'

ACCOUNT No.  
 DRAWING NUMBER  
 S-1082  
 SHEET 2 OF 10  
 76-115 B

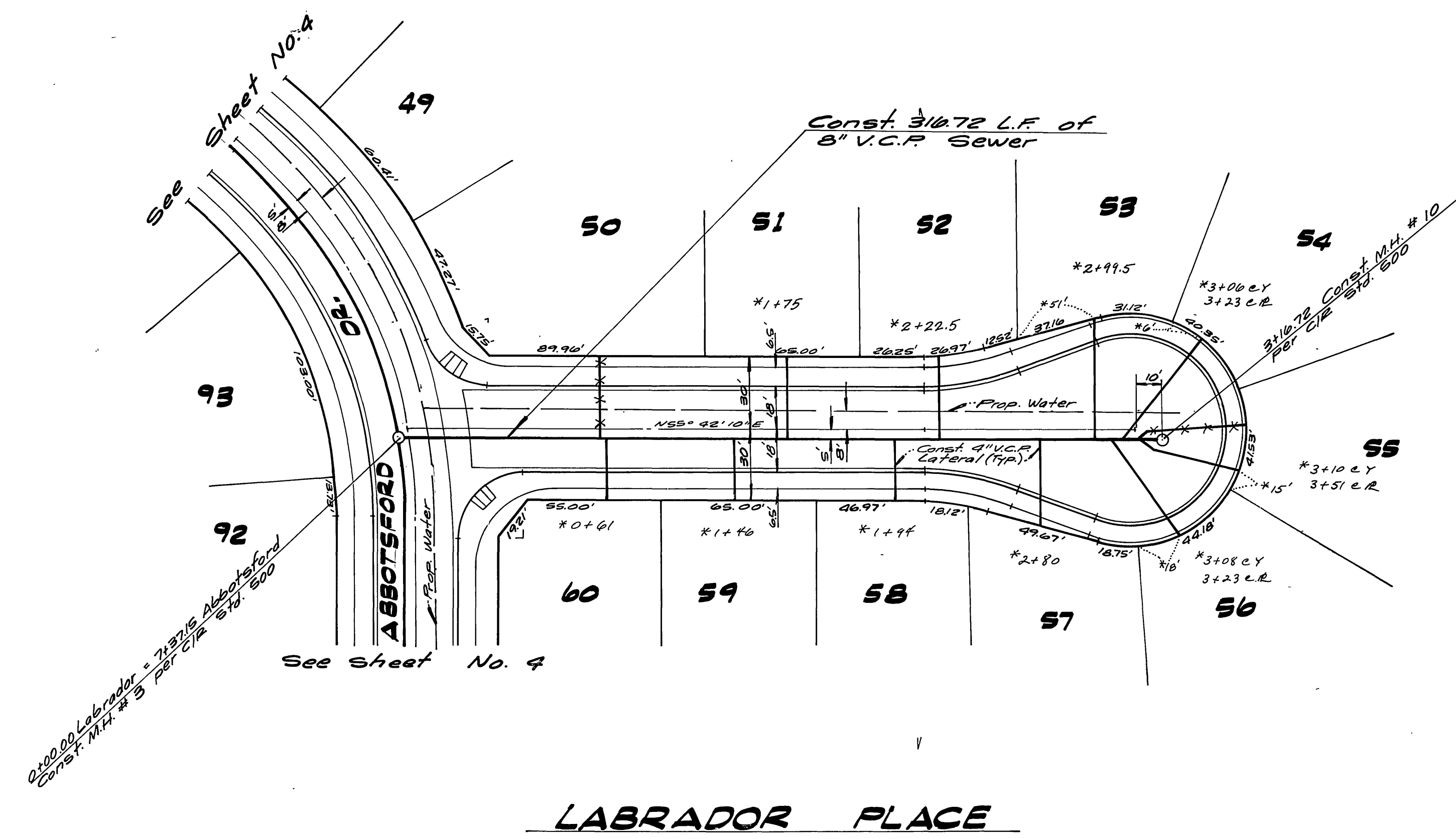
\*AS BUILT 8-74 MET

Note: See Sheet #1 for General Notes





**Bench Mark:**  
 Brass Disc set in comp. stamped 601-25-68  
 on W. Side of Tyler St. 250' N. of  
 Indiana Ave. & 1/2 NE of Bridge #56-419'  
 Elev. 756.665



**LABRADOR PLACE**

\* AS BUILT 8-78 KBT

Note: See Sheet #1 for General Notes

APPROVED BY:  
*Walter J. Miller* 3-31-77  
 Chief Utilities Engineer, Water

ALBERT A. WEBB ASSOCIATES  
 CIVIL ENGINEERS  
 RIVERSIDE, CALIFORNIA

APPROVED BY: *[Signature]* DATE: 4/14/77  
 R.E. No. 27105

MARK	REVISIONS	APPR.	DATE

CITY OF RIVERSIDE, CALIFORNIA  
 PUBLIC WORKS DEPARTMENT

APPROVED BY: *[Signature]* DATE: 4-13-77  
 PRINCIPAL ENGINEER  
 PARK DEPARTMENT  
 TRAFFIC DIVISION  
 CHIEF PUB. WORKS ENGR.

**SEWER PLAN & PROFILE**

TRACT 8111  
 LABRADOR PL.

SCALE: Horiz. 1" = 40' , Vert. 1" = 4'

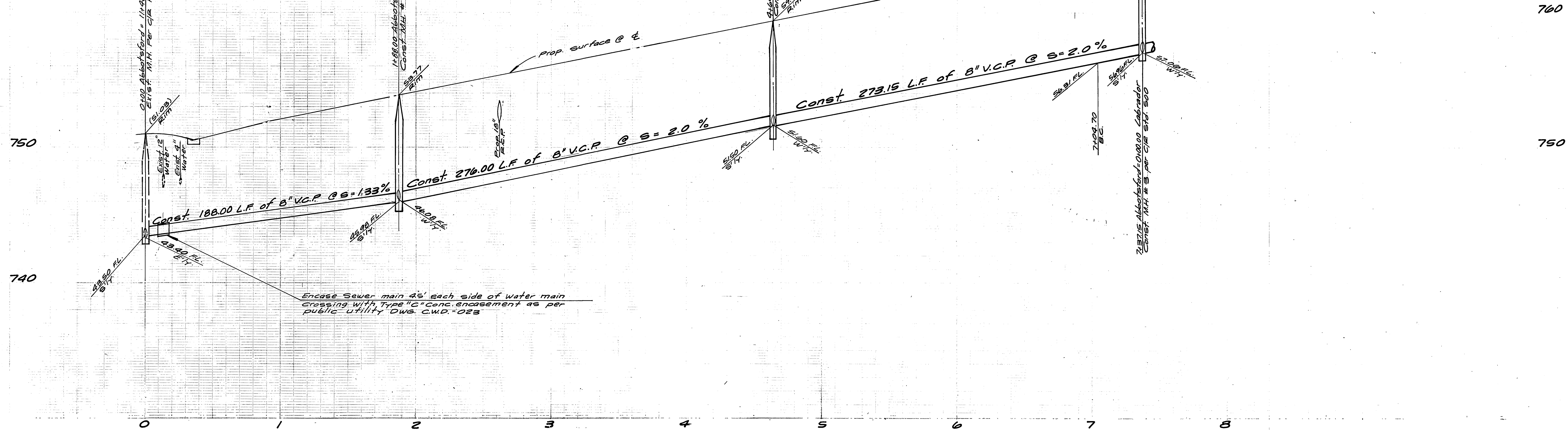
ACCOUNT No.  
 DRAWING NUMBER  
 S-1082

SHEET 3 OF 10

76-116 B

W.O. 76-116 FOR: Pacesetter F.B. 1031

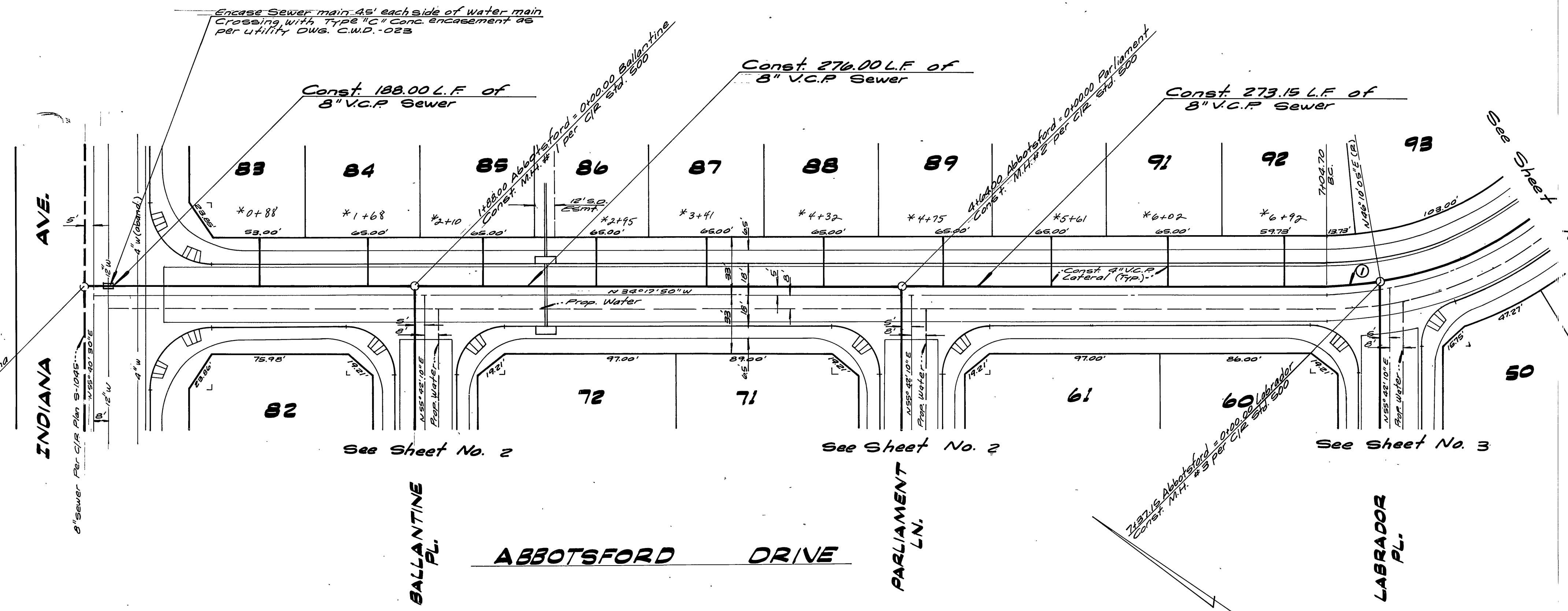
DESIGNED BY: *[Signature]* DRAWN BY: *[Signature]* CHECKED BY: *[Signature]*



Encase Sewer main 48\"/>

Encase Sewer main 48\"/>

**Bench Mark:**  
 Brass Disc set in conc. stamped 60-25-68  
 on W. side of Tyler St. 250' N. of  
 Indiana Ave. & 15' NE. of Bridge # 56-419  
 Elev. 756.665



CURVE DATA				
NO.	Δ	R	L	T
1	09° 32' 05"	195'	32.45'	14.26'

Note: See Sheet #1 for General Notes \* AS BUILT P-78 KPT

APPROVED BY:  
*Mark Joffe* 3-31-77  
 Chief Utilities Engineer, Water Date

ALBERT A. WEBB ASSOCIATES  
 CIVIL ENGINEERS  
 RIVERSIDE, CALIFORNIA  
 APPROVED BY: *[Signature]* DATE 4/10/77  
 R.E. No. 27025

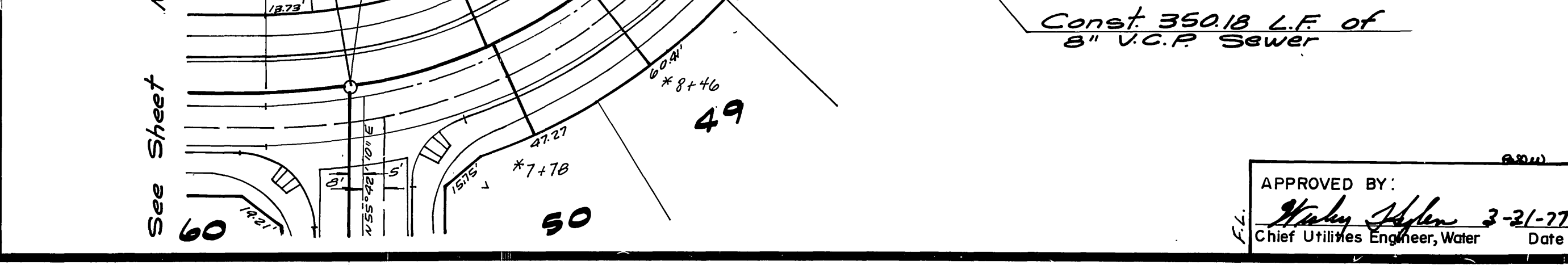
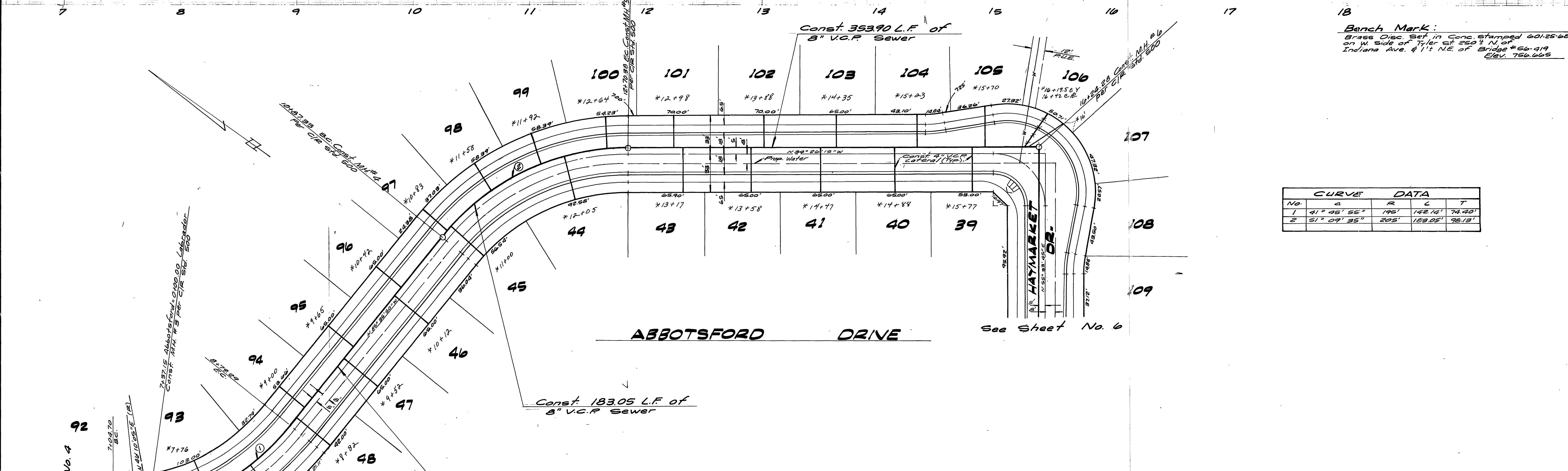
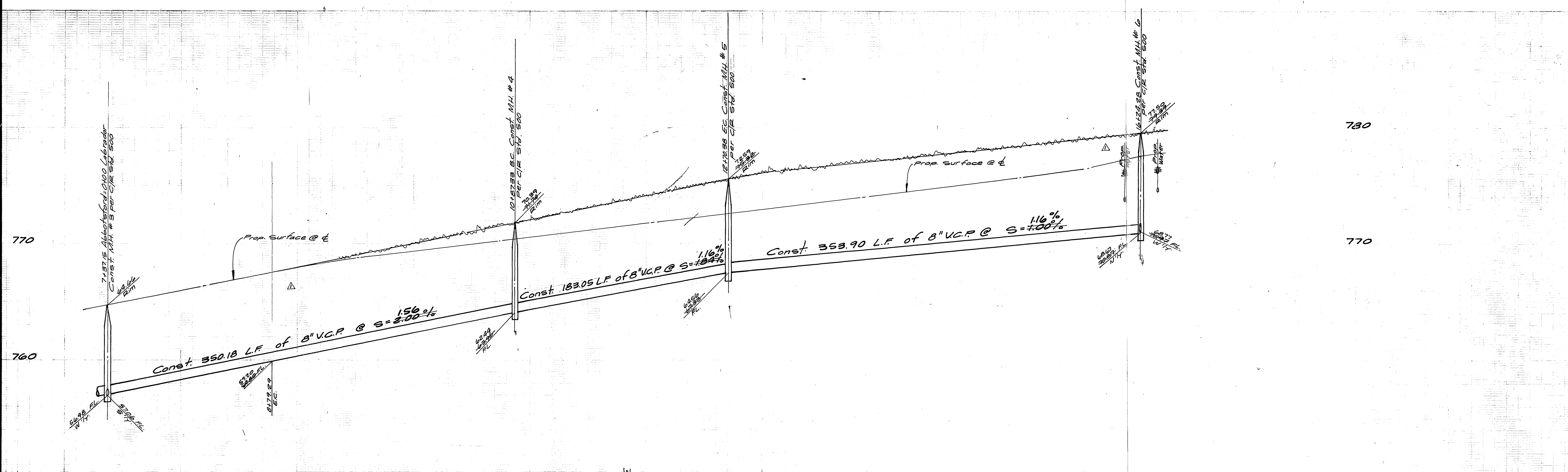
MARK REVISIONS APPR. DATE  
 DESIGNED BY *ME* DRAWN BY *BP* CHECKED BY

CITY OF RIVERSIDE, CALIFORNIA  
 PUBLIC WORKS DEPARTMENT  
 APPROVED BY: *[Signature]* DATE 4/10/77  
 PRINCIPAL ENGINEER  
 TRAFFIC DIVISION  
 CHIEF PUB. WKS. ENGR. *[Signature]* DATE 4/10/77

SEWER PLAN & PROFILE  
 TRACT 8111  
 ABBOTSFORD DR.  
 SCALE: Horiz. 1" = 40', Vert. 1" = 4'

ACCOUNT No.  
 DRAWING NUMBER  
 S-1082  
 SHEET 4 OF 10  
 76-115 B





APPROVED BY: *[Signature]* DATE 12/14/14  
 Chief Utilities Engineer, Water Date

APPROVED BY: *[Signature]* DATE 12/14/14  
 R.E. No. 2705

ALBERT A. WEBB ASSOCIATES  
 CIVIL ENGINEERS  
 RIVERSIDE, CALIFORNIA

CITY OF RIVERSIDE, CALIFORNIA  
 PUBLIC WORKS DEPARTMENT

APPROVED BY: *[Signature]* DATE 4/3/17  
 PRINCIPAL ENGINEER

APPROVED BY: *[Signature]* DATE 4/3/17  
 DIRECTOR OF PUBLIC WORKS

TRAFFIC DIVISION  
 CHIEF PUB. WKS. ENGR

REVISIONS

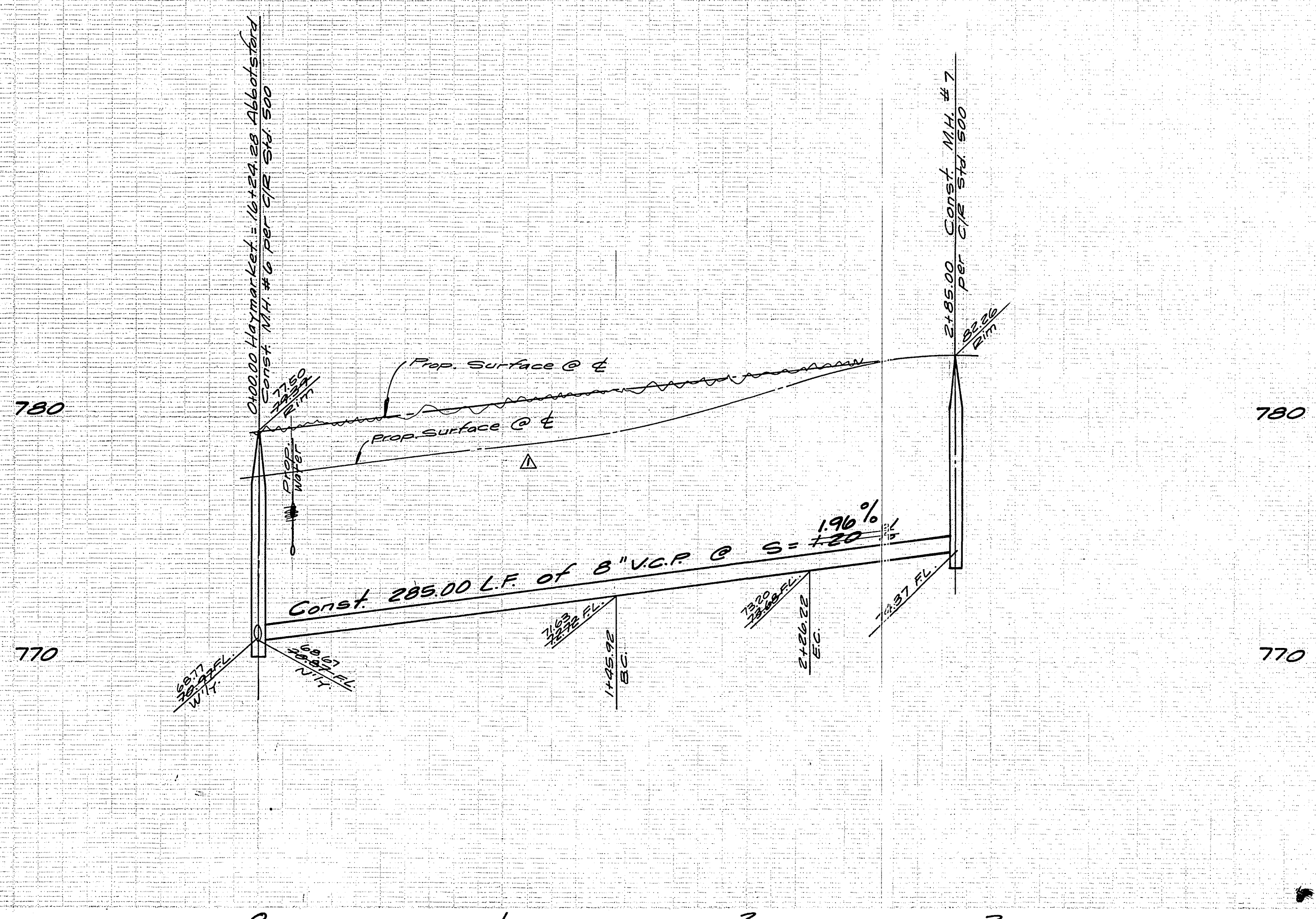
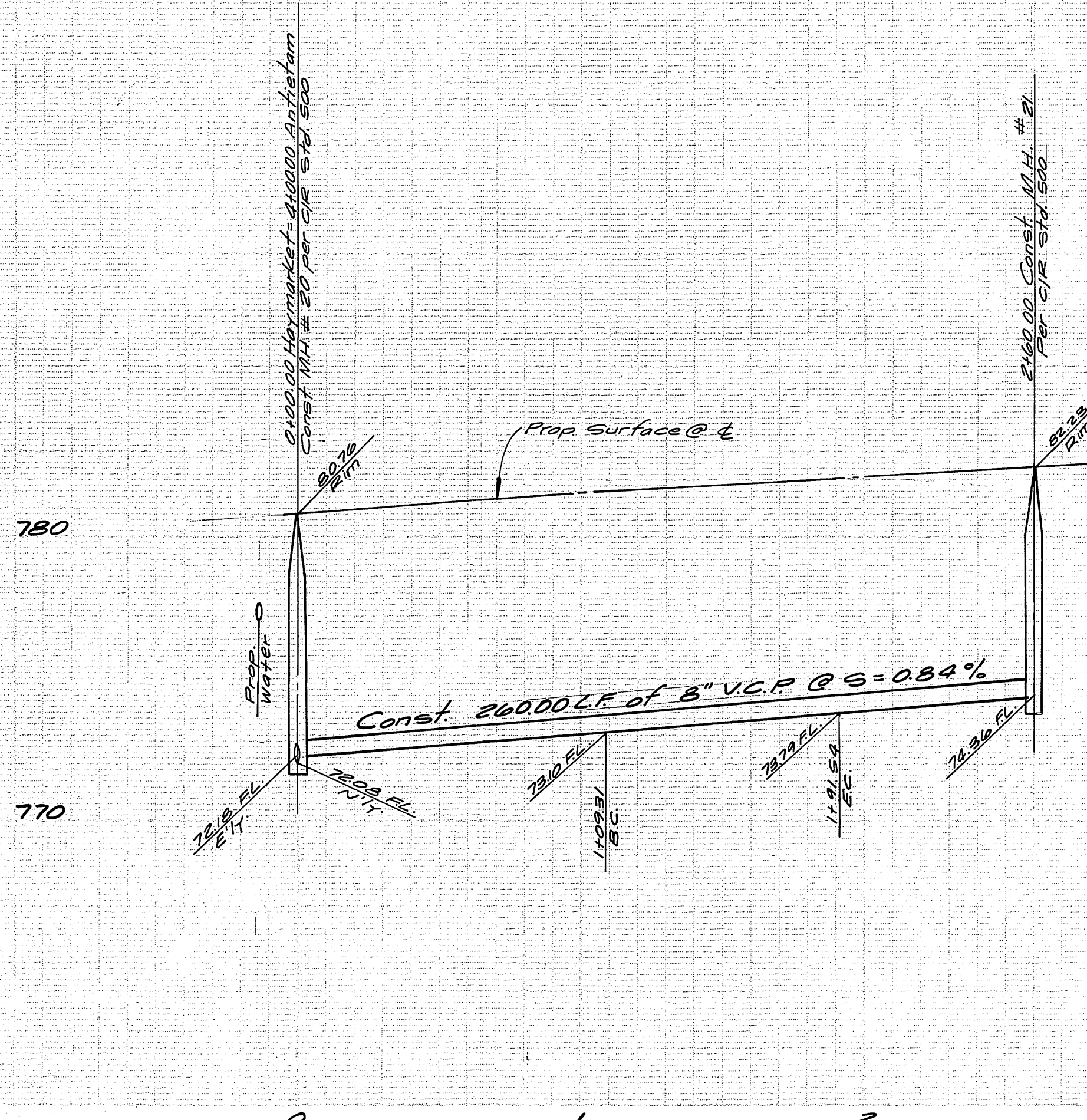
MARK

DESIGNED BY M.C. DRAWN BY R.P. CHECKED BY

SCALE: Horiz. 1" = 40', Vert. 1" = 4'

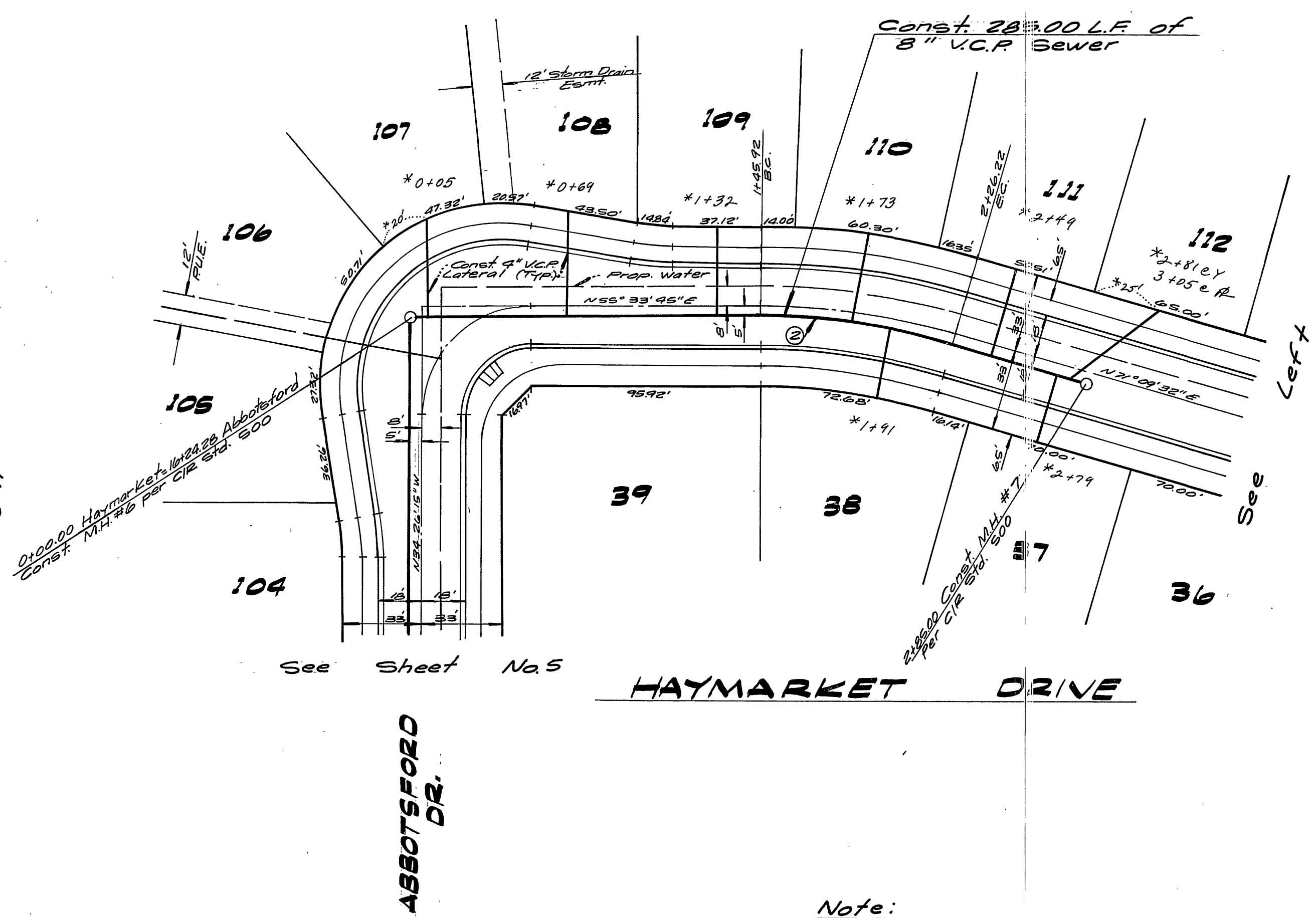
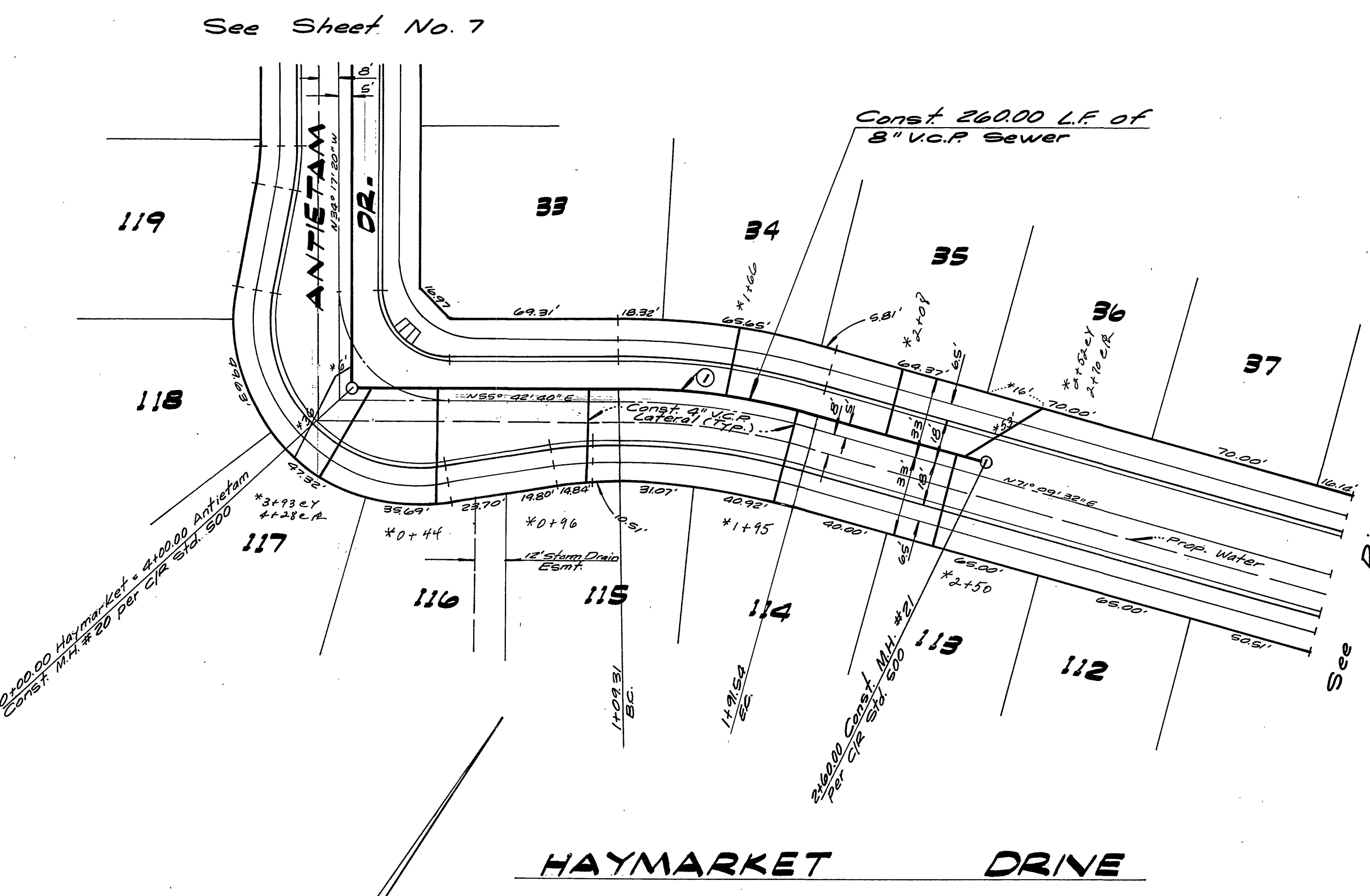
ACCOUNT No. 76-115 B  
 DRAWING NUMBER S-1082  
 SHEET 5 OF 10





**Bench Mark:**  
 Brass Disc, set in conc. stamped 601-25-68  
 on W. side of Tyler St. 250' N. of  
 Indiana Ave. & 1/4 NE of Bridge # 26-419  
 Elev 756.665

CURVE DATA				
No.	A	B	C	T
1	15° 22' 52"	305'	8223'	41.37'
2	15° 35' 47"	245'	8030'	40.00'



Note: See Sheet #1 for General Notes \*AS BUILT 8-78 KPD

APPROVED BY: *W. J. Allen*  
 Chief Utilities Engineer, Water Date 3-31-77

ALBERT A. WEBB ASSOCIATES  
 CIVIL ENGINEERS  
 RIVERSIDE, CALIFORNIA  
 APPROVED BY: *[Signature]* DATE: 3/27/77  
 R.E. No. 27105

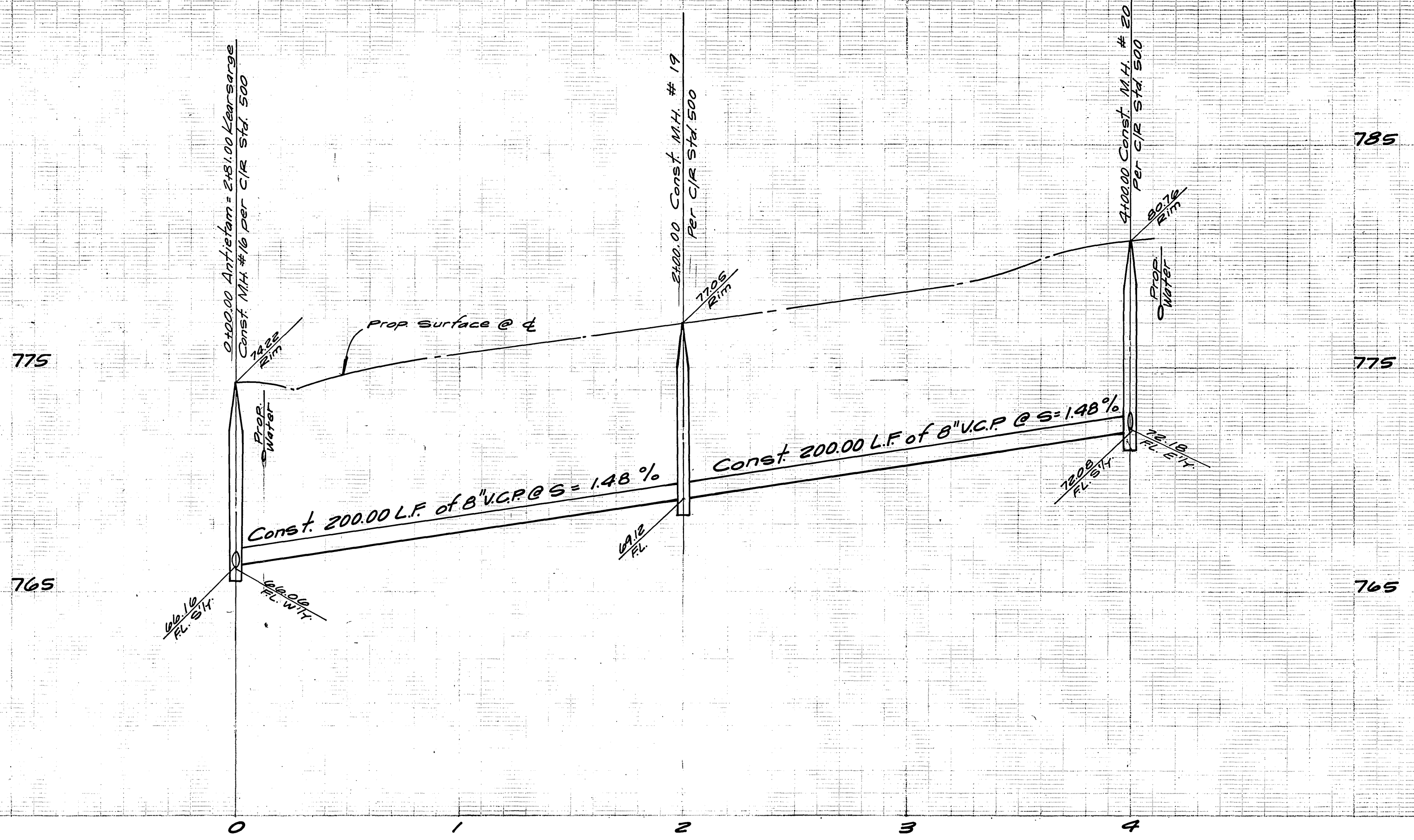
DESIGNED BY: *[Signature]* DRAWN BY: *[Signature]* CHECKED BY: *[Signature]*

CITY OF RIVERSIDE, CALIFORNIA  
 PUBLIC WORKS DEPARTMENT  
 APPROVED BY: *[Signature]* DATE: 4/13/77  
 PRINCIPAL ENGINEER  
 TRAFFIC DIVISION  
 CHIEF PUB. WKS. ENGR.

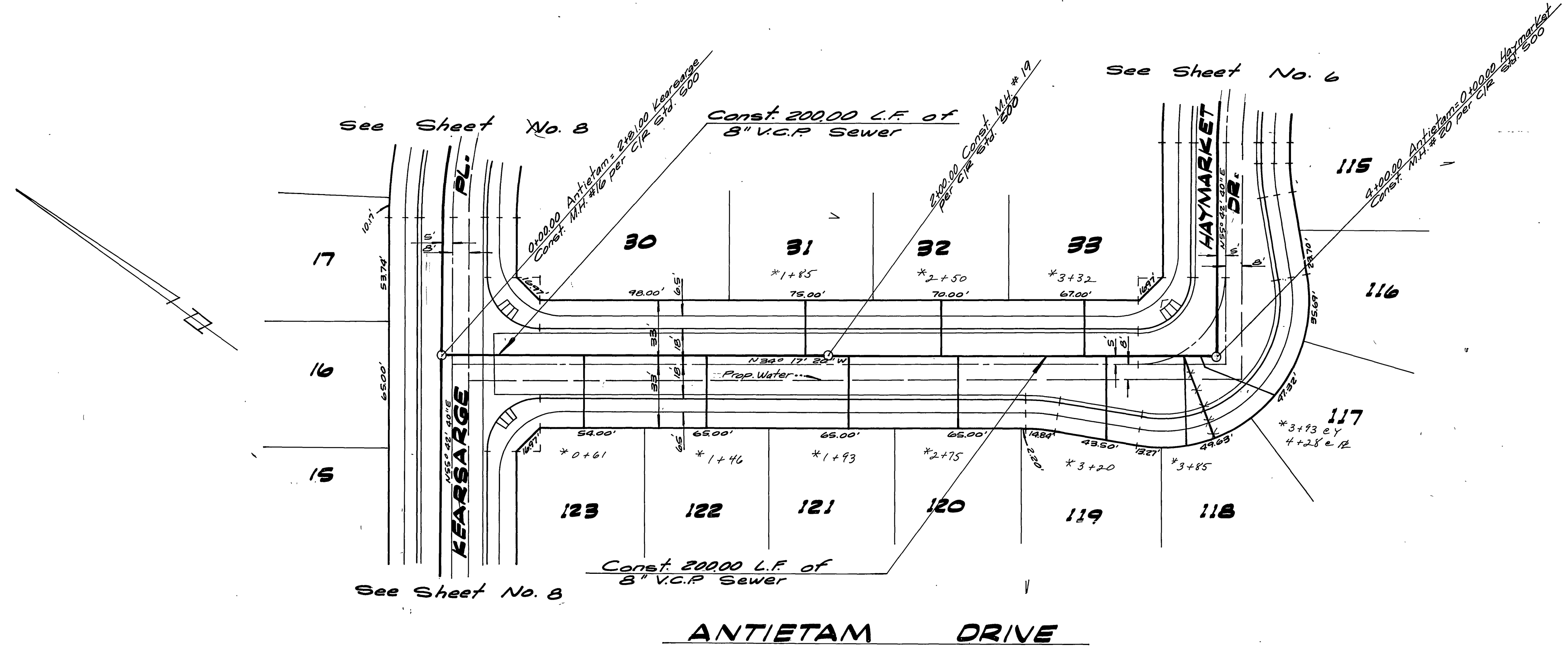
SEWER PLAN & PROFILE  
 TRACT 8111  
 HAYMARKET DR.  
 SCALE: Horiz. 1" = 40', Vert. 1" = 4'

ACCOUNT No.  
 DRAWING NUMBER  
 S-1082  
 SHEET 6 OF 10  
 76-115 B





**Bench Mark:**  
 Brass Disc Set in Conc. stamped 60126-68  
 on W. side of Tyler St. 250' N. of  
 Indiana Ave. & 1/2 N.E. of Bridge # 56-419  
 Elev. 756665



*Note:* See Sheet #1 for General Notes \*AS BUILT 9-77 KET

APPROVED BY:  
*Walter J. Miller*  
 Chief Utilities Engineer, Water  
 Date 3-21-77

ALBERT A. WEBB ASSOCIATES  
 CIVIL ENGINEERS  
 RIVERSIDE, CALIFORNIA  
 APPROVED BY: *[Signature]* DATE *3/21/77*  
 R.E. No. 27105

MARK	REVISIONS	APPR.	DATE

CITY OF RIVERSIDE, CALIFORNIA  
 PUBLIC WORKS DEPARTMENT  
 APPROVED BY: *[Signature]*  
 DIRECTOR OF PUBLIC WORKS  
 DATE 4-1-77

**SEWER PLAN & PROFILE**  
 TRACT 3111  
 ANTIETAM DR.

ACCOUNT No.  
 DRAWING NUMBER  
 S-1082  
 SHEET 7 OF 10  
 76-115 B

SCALE: Horiz. 1" = 40' , Vert. 1" = 4'



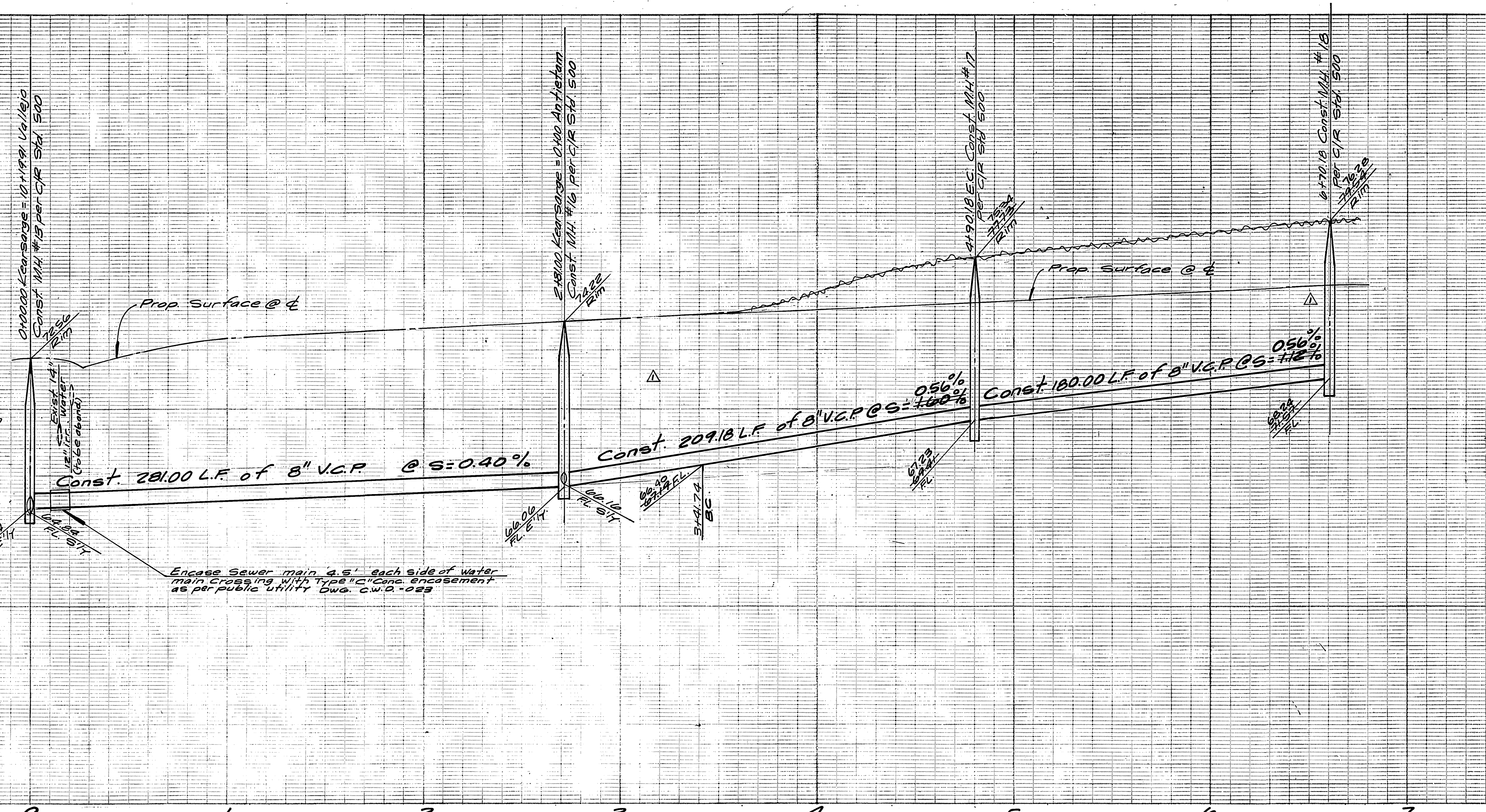
770

760

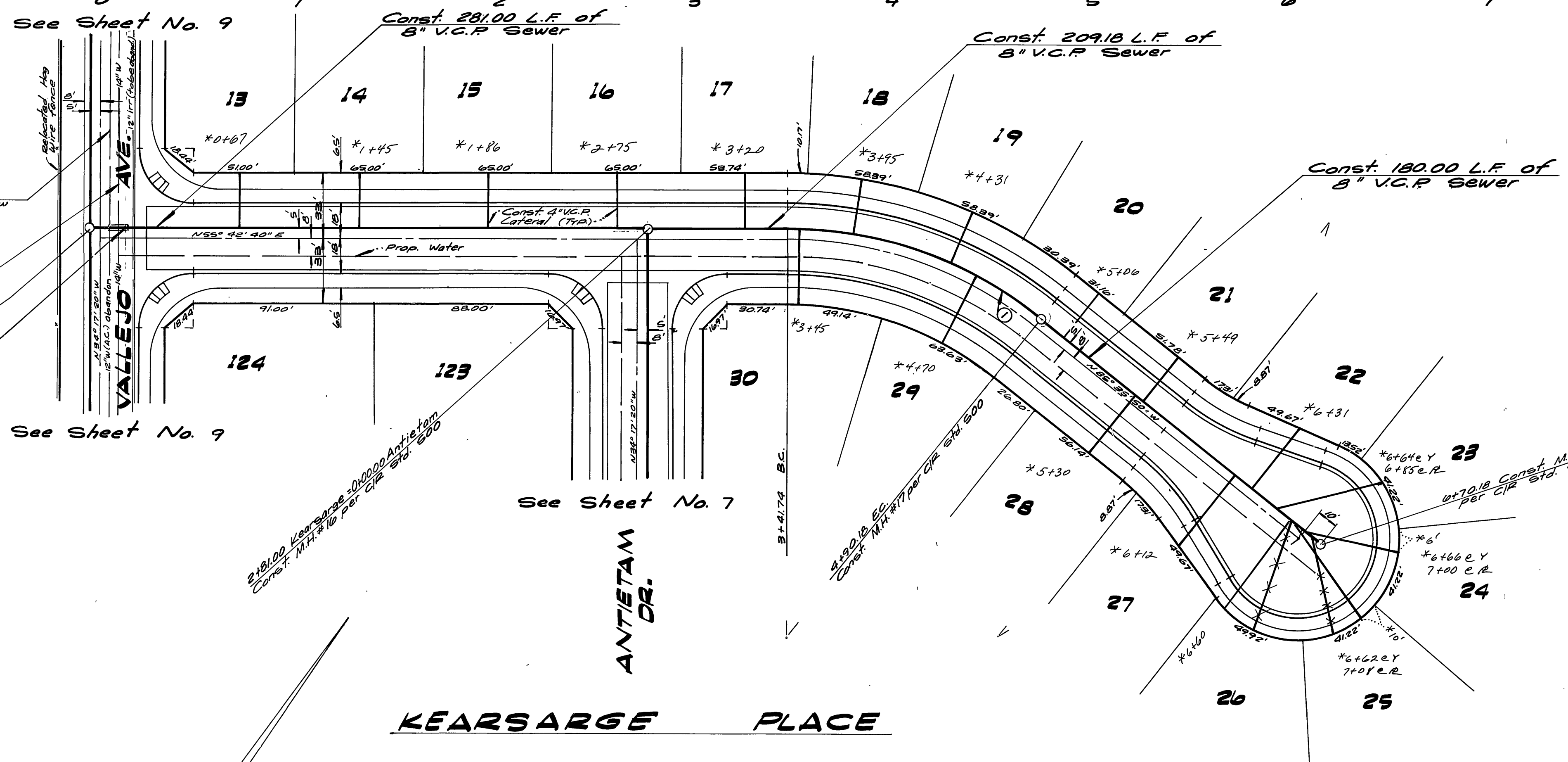
780

770

Note:  
12" A.C. Water location  
& depth unknown



Excess Sewer main 4.5" each side of water  
main crossing with 12" C.C. Encasement  
as per public utility Div. C.W.D. 023



Bench Mark:  
Brass Disc Set in Conc. Stamped 60-25-68  
on W. side of Tyler St. 250' N. of  
Indiana Ave. 4 1/2' N.E. of Bridge #56-019  
Elev. 756.665

CURVE DATA			
NO.	Δ	R	T
1	88° 41' 30"	205'	136.24' 71.97'

Note:  
Location & depth unknown

Verify location of 14" line in the field  
0.0000 Keersarge = 10.1199 Vallejo  
Const. M.H. #13 per C.P.R. Sta. 500

Coarse Sewer main 4.5" each side of water main  
crossing with 12" C.C. Encasement as per  
public utility Div. C.W.D. 023

0.0000 Keersarge = 0.0000 Antieta  
Const. M.H. #16 per C.P.R. Sta. 500

Note:  
See Sheet #1 for General Notes  
\* AS BUILT 8-78 HET

APPROVED BY:  
*W. H. H. H.* 3-31-77  
Chief Utilities Engineer, Water Date

ALBERT A. WEBB ASSOCIATES  
CIVIL ENGINEERS  
RIVERSIDE, CALIFORNIA  
APPROVED BY: *[Signature]* DATE: 3/31/77  
R.E. No. 27025

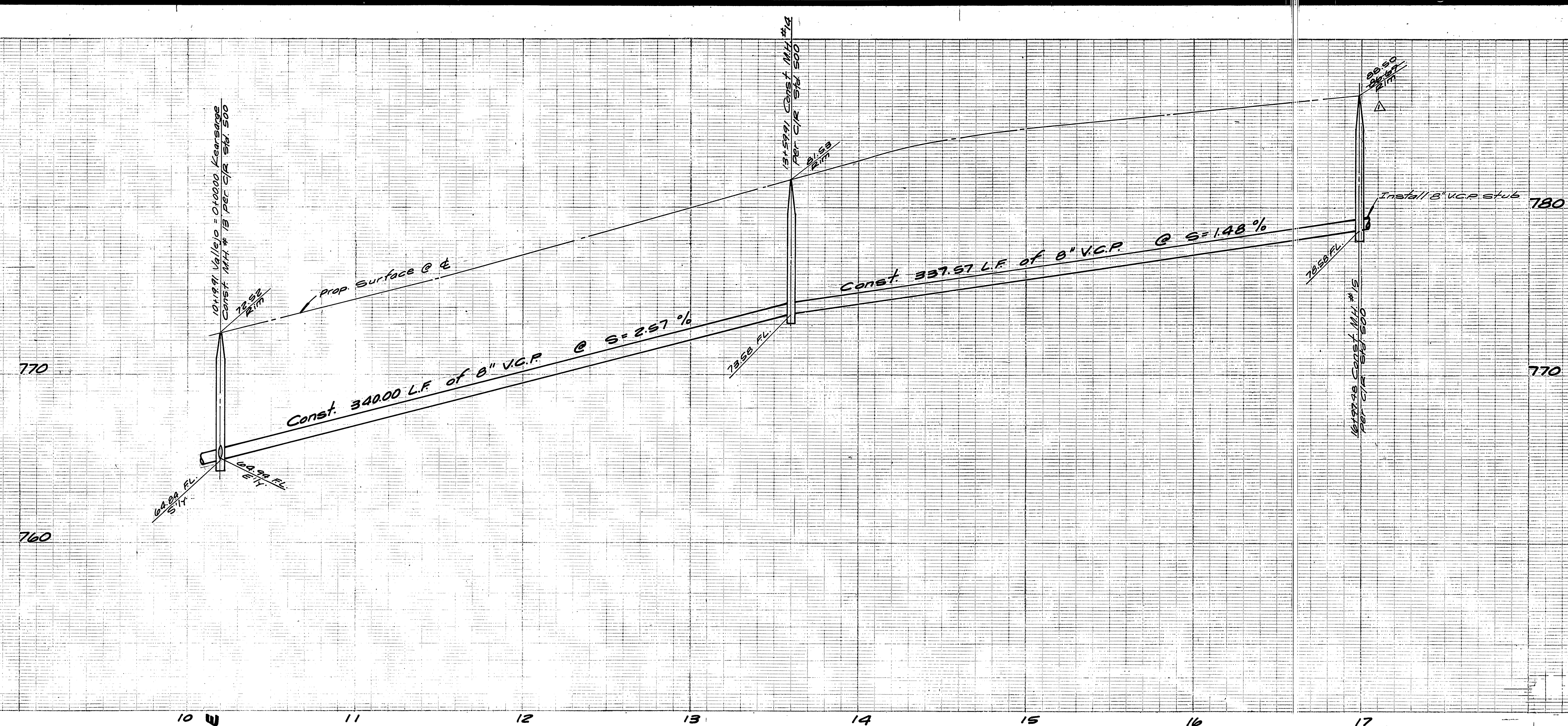
DESIGNED BY: *[Signature]* DRAWN BY: *[Signature]* CHECKED BY: *[Signature]*

CITY OF RIVERSIDE, CALIFORNIA  
PUBLIC WORKS DEPARTMENT  
APPROVED BY: *[Signature]* DATE: 4-13-77  
PRINCIPAL ENGINEER  
TRAFFIC DIVISION  
CHIEF PUB. WKS. ENGR.

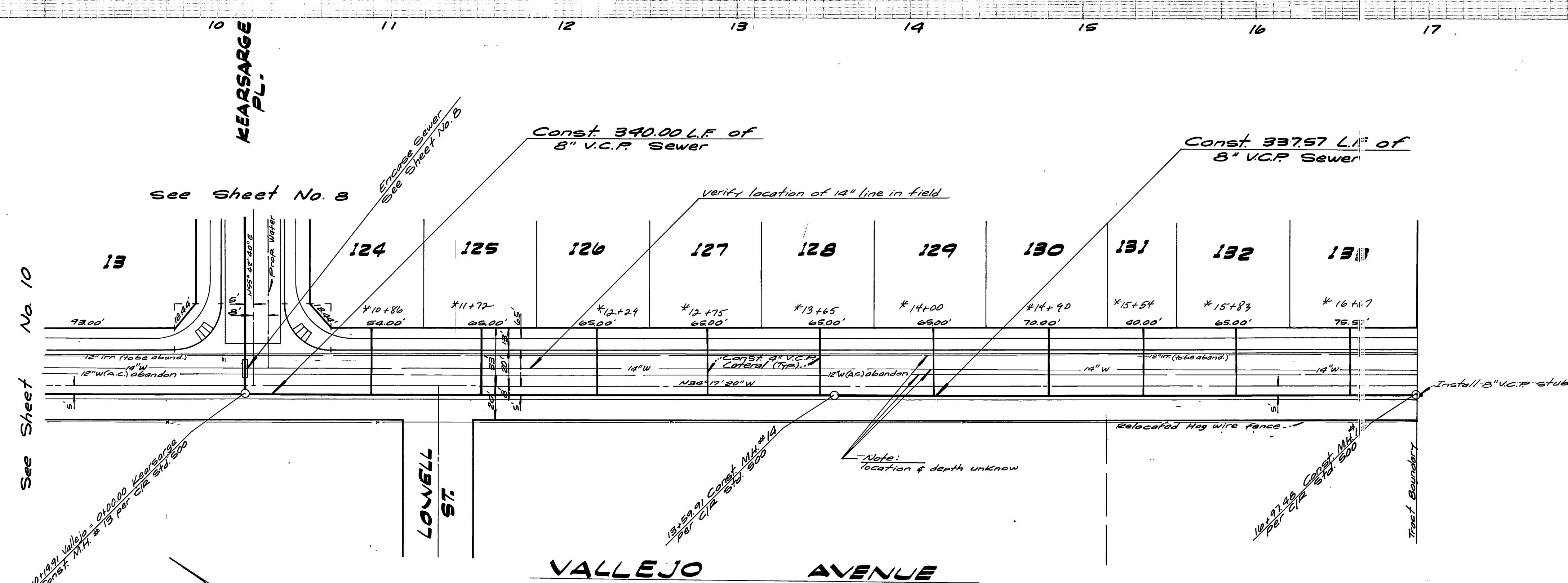
SEWER PLAN & PROFILE  
TRACT 8111  
KEARSARGE PL.  
SCALE: Horiz. 1"=40', Vert. 1"=4'

ACCOUNT No.  
DRAWING NUMBER  
S-1082  
SHEET 8 OF 10  
76-115 B





**Bench Mark:**  
 Brass Disc Set in Conc stamped 601-55-68  
 on W. Side of Tyler St. 250' N. of  
 Indiana Ave. & 1' N.E. of Bridge # 56-414  
 Elev. 756.665



**Note:**  
 Irrigation lines and facilities cannot be  
 abandoned until new source of water delivery  
 is made.  
 Contact: Ken Anderson, CLR WA prior to beginning construction  
 PH. 787-7427

**Note:**  
 See Sheet #1 for General Notes  
 \* AS BUILT 8-78 LPT

APPROVED BY: *Wesley Hylan* 3-31-77  
 Riverside Canal & Irr. Date

APPROVED BY: *Wesley Hylan* 3-31-77  
 Chief Utilities Engineer, Water Date

ALBERT A. WEBB ASSOCIATES  
 CIVIL ENGINEERS  
 RIVERSIDE, CALIFORNIA

APPROVED BY: *[Signature]* DATE 12/1/76  
 R.E. No. 2706

W.O. 76-115 FOR Pacesetter F.B. 1031

CITY OF RIVERSIDE, CALIFORNIA  
 PUBLIC WORKS DEPARTMENT

APPROVED BY: *[Signature]* DATE 4/13/77  
 PRINCIPAL ENGINEER

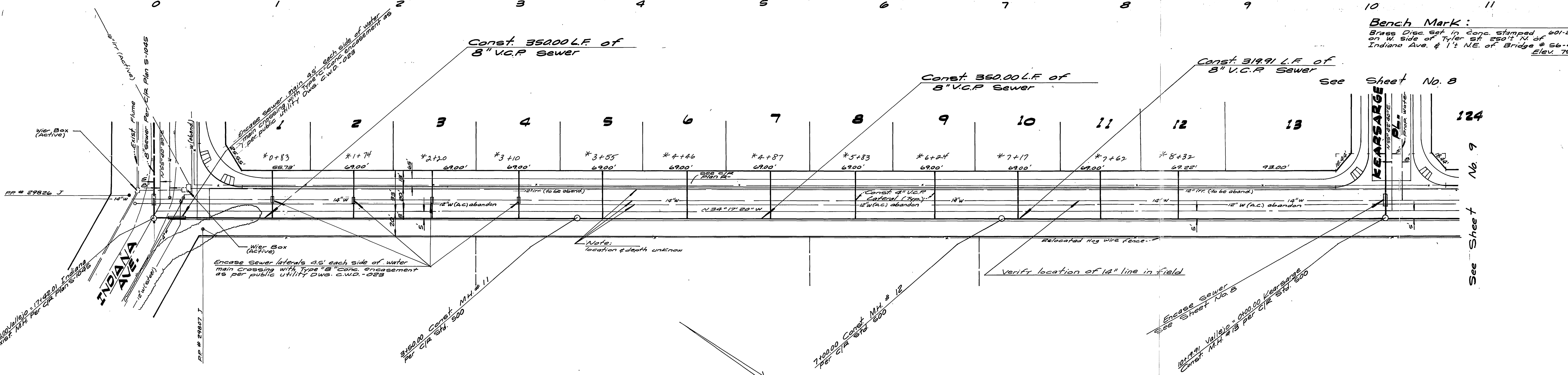
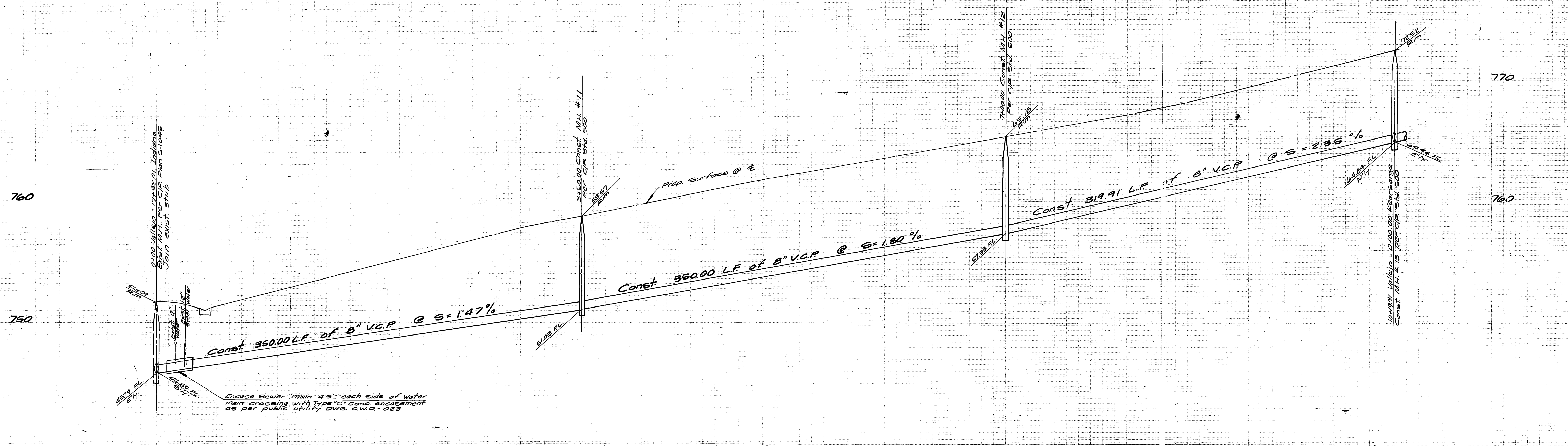
TRAFFIC DIVISION  
 CHIEF PUB. WKS. ENGR. *[Signature]*

DESIGNED BY: *MC* DRAWN BY: *EP* CHECKED BY: *[Signature]*

SEWER PLAN & PROFILE  
 TRACT 8111  
 VALLEJO AVENUE

ACCOUNT No. 5-1082  
 DRAWING NUMBER  
 SHEET 9 OF 10  
 SCALE: Horiz. 1"=40', Vert. 1"=4'





**Bench Mark:**  
 Brass Disc set in Conc. Stamped 601-25-48  
 on W. side of Tyler St 250' N. of  
 Indiana Ave. & 1/2 NE. of Bridge # 26-219  
 Elev. 756.665

**Note:**  
 Irrigation lines and facilities cannot be  
 abandoned until new source of water delivery  
 is made.  
 Contact: Ean Anderson, C/R W.D. prior to beginning construction  
 PH. 787-7427

**Note:**  
 See Sheet #1 for General Notes

APPROVED BY: *Wahy Hyla* 3-31-77  
 Riverside Canal & Irr. Date

APPROVED BY: *Wahy Hyla* 3-31-77  
 Chief Utilities Engineer, Water Date

ALBERT A. WEBB ASSOCIATES  
 CIVIL ENGINEERS  
 RIVERSIDE, CALIFORNIA

APPROVED BY: *[Signature]* DATE: *3/31/77*  
 R.E. No. 27105

W.D. 76-115 FOR: Pacesetter F.B. 1031 DESIGNED BY: M.C. DRAWN BY: SP CHECKED BY: [ ]

CITY OF RIVERSIDE, CALIFORNIA  
 PUBLIC WORKS DEPARTMENT

APPROVED BY: *[Signature]* DATE: *4/14/77*  
 PRINCIPAL ENGINEER

TRAFFIC DIVISION: *[Signature]*  
 CHIEF PUB. WKS. ENGR. DATE: *4-13-77*

SEWER PLAN & PROFILE  
 TRACT 8111  
 VALLEJO AVENUE

ACCOUNT No. S-1082  
 DRAWING NUMBER  
 SHEET 10 OF 10  
 76-115 B

SCALE: Horiz. 1"=40', Vert. 1"=4'

\*AS BUILT 8-78 RPT