

LOCATION MAP  
No Scale

**GENERAL NOTES**

1. The private engineer signing these plans is responsible for the accuracy and acceptability of the work hereon. In the event of discrepancies arising during construction, the private engineer shall be responsible for determining an acceptable solution and revising the plans for approval by the City.
2. Construction shall be in accordance with standard specifications for Public Works construction, 1976 Edition, and City of Riverside Standard Drawings.
3. It shall be the responsibility of the Contractor to clear the right of way in accordance with the provisions of law as it affects each utility, including irrigation lines and appurtenances and at no cost to the City.
4. Pipe shall be bedded per Case I, Standard Drawing No. 752, unless otherwise specified on plans.
5. Location of Wyes and Laterals to be determined at the direction of the owner.
6. All stubs and Laterals to be constructed in accordance with Standard Drawing No. 562; stubs to be plugged and capped, unless otherwise specified on plans.
7. The Sewer Contractor shall adjust Manholes to final grade after paving is completed.
8. Laterals are to be 4" and extended to property line.
9. Prior to construction of Sewer, Contractor is to expose existing sewer and contact the Engineer for verification of existing location and elevation.
10. A plug shall be installed and will remain in place where the new sewer connects with the existing sewer until the new sewer is accepted by the City.

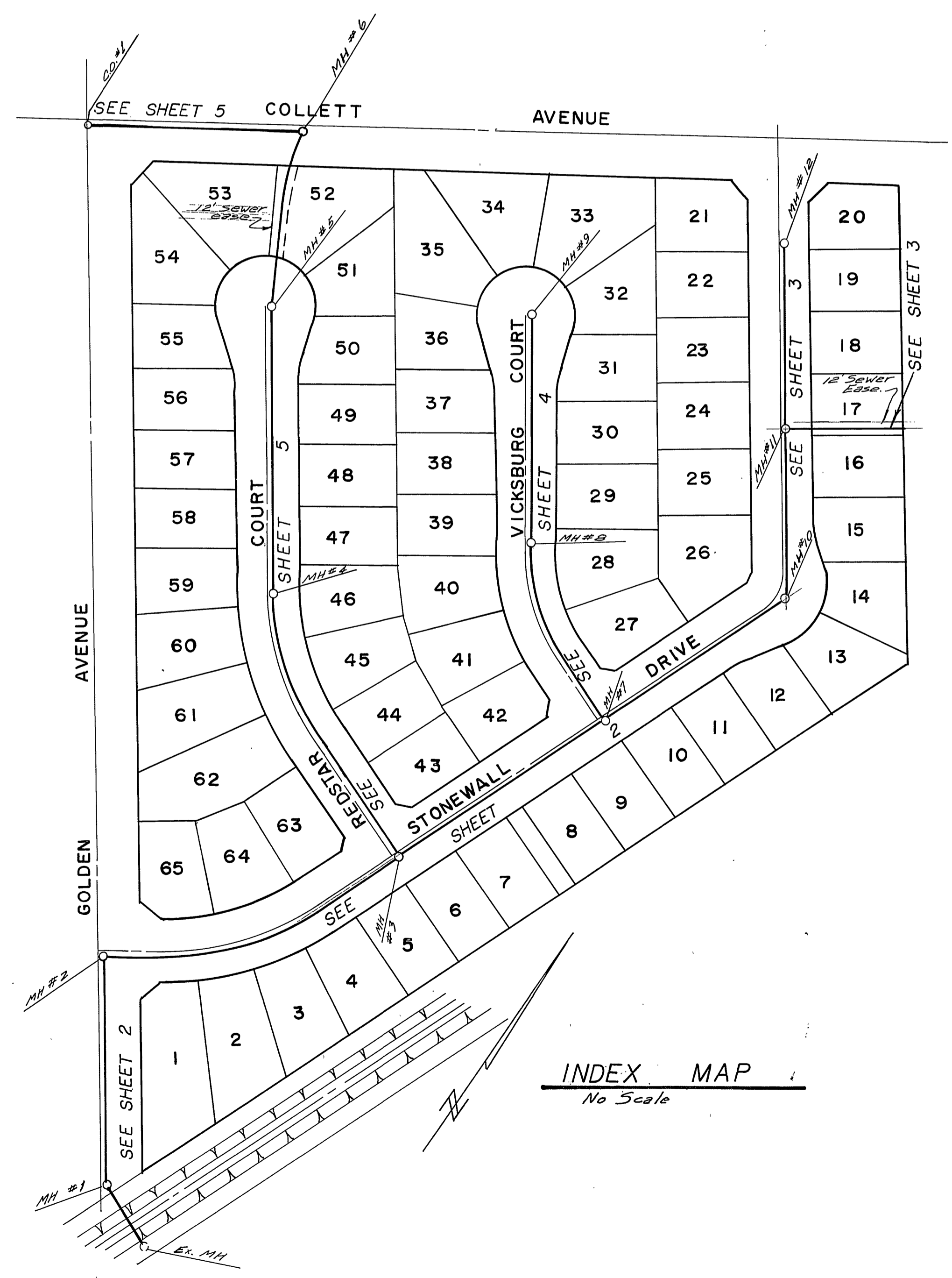
**NOTICE TO CONTRACTOR**

The existence and location of underground utility pipes or structures shown on these plans are obtained by a search of the available records. To the best of our knowledge, there are no existing utilities except as shown on these plans.

The contractor is required to take due precautionary measures to protect the utility lines shown and any other lines not of record or not shown on these plans.

**BENCH MARK**

R.R. spike in RR # 24582T @ S.E. corner La Sierra Avenue and Collett Avenue C/R F.B. 97815  
ELEV. 704.25



INDEX MAP  
No Scale

ALBERT A. WEBB ASSOCIATES  
CIVIL ENGINEERS  
RIVERSIDE, CALIFORNIA  
APPROVED BY: *[Signature]* DATE: 12/3/76  
R.E. No. 2076

| MARK | REVISIONS | APPR. DATE |
|------|-----------|------------|
|      |           |            |
|      |           |            |
|      |           |            |

APPROVED BY: *[Signature]* DATE: 3-31-77  
CHIEF UTILITIES ENGINEER - WATER

APPROVED BY: *[Signature]* DATE: 4-26-77  
PRINCIPAL ENGINEER  
PARK DEPARTMENT  
TRAFFIC DIVISION  
CHIEF PUB. WKS. ENGR.

\* AS BUILT 11-28-79 B.R.  
CITY OF RIVERSIDE, CALIFORNIA  
SEWER PLANS & PROFILE  
DEPARTMENT  
TRACT 6761  
INDEX

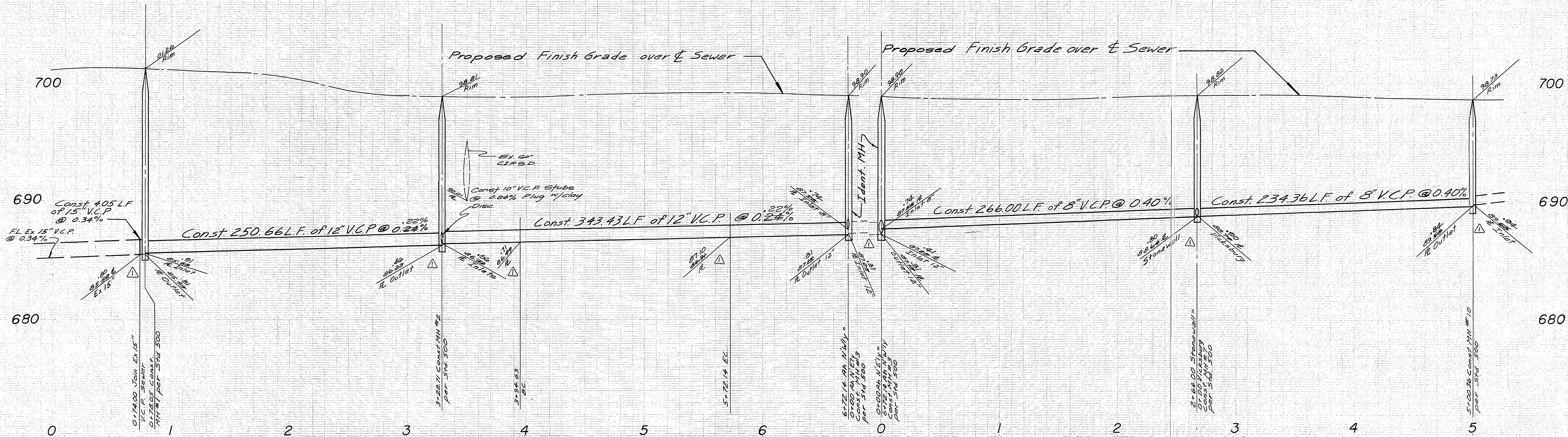
ACCOUNT No. 75-135  
DRAWING NUMBER  
S-1083  
SHEET 1 OF 5  
75-135-B

W.D. 75-135 FOR: Pacesetter Homes - F.B. 1002

DESIGNED BY: RLT DRAWN BY: MC CHECKED BY: BDM

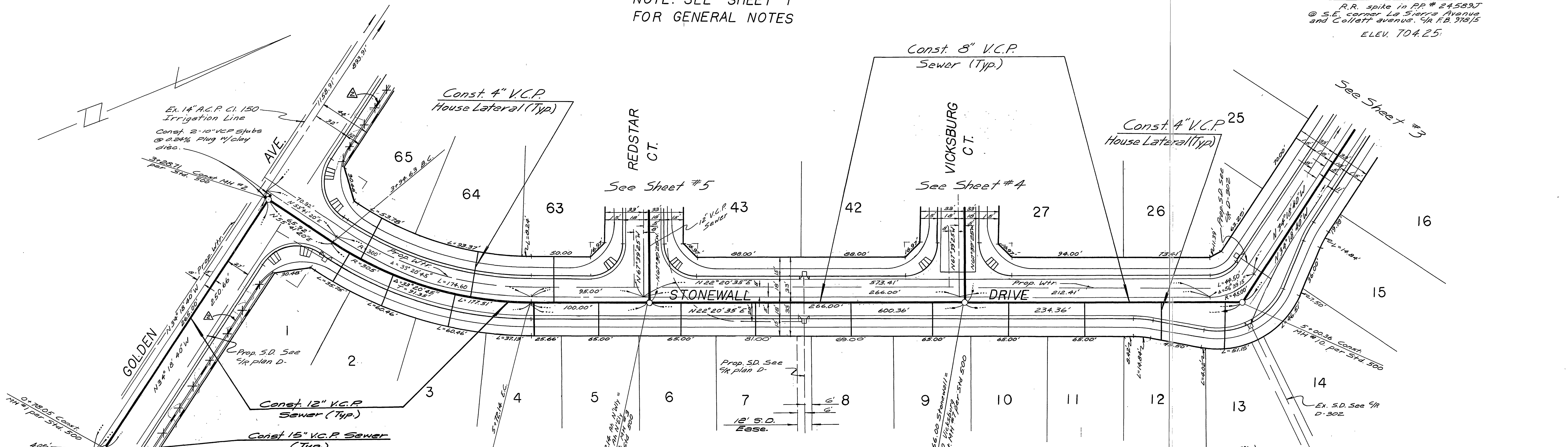
DATE: 4-26-77

SCALE: None



NOTE: SEE SHEET 1 FOR GENERAL NOTES

BENCH MARK  
 R.R. spike in PP # 24589J  
 @ S.E. corner La Sierra Avenue  
 and Collett Avenue. CR FB. 378/5  
 ELEV. 704.25



ALBERT A. WEBB ASSOCIATES  
 CIVIL ENGINEERS  
 RIVERSIDE, CALIFORNIA  
 APPROVED BY *[Signature]* DATE 4/3/76  
 R.E. No. 2272

APPROVED BY *[Signature]* DATE 3-31-77  
 CHIEF UTILITIES ENGINEER, WATER

CITY OF RIVERSIDE, CALIFORNIA  
 PUBLIC WORKS DEPARTMENT  
 APPROVED BY *[Signature]* DATE 4-10-77  
 DIRECTOR OF PUBLIC WORKS

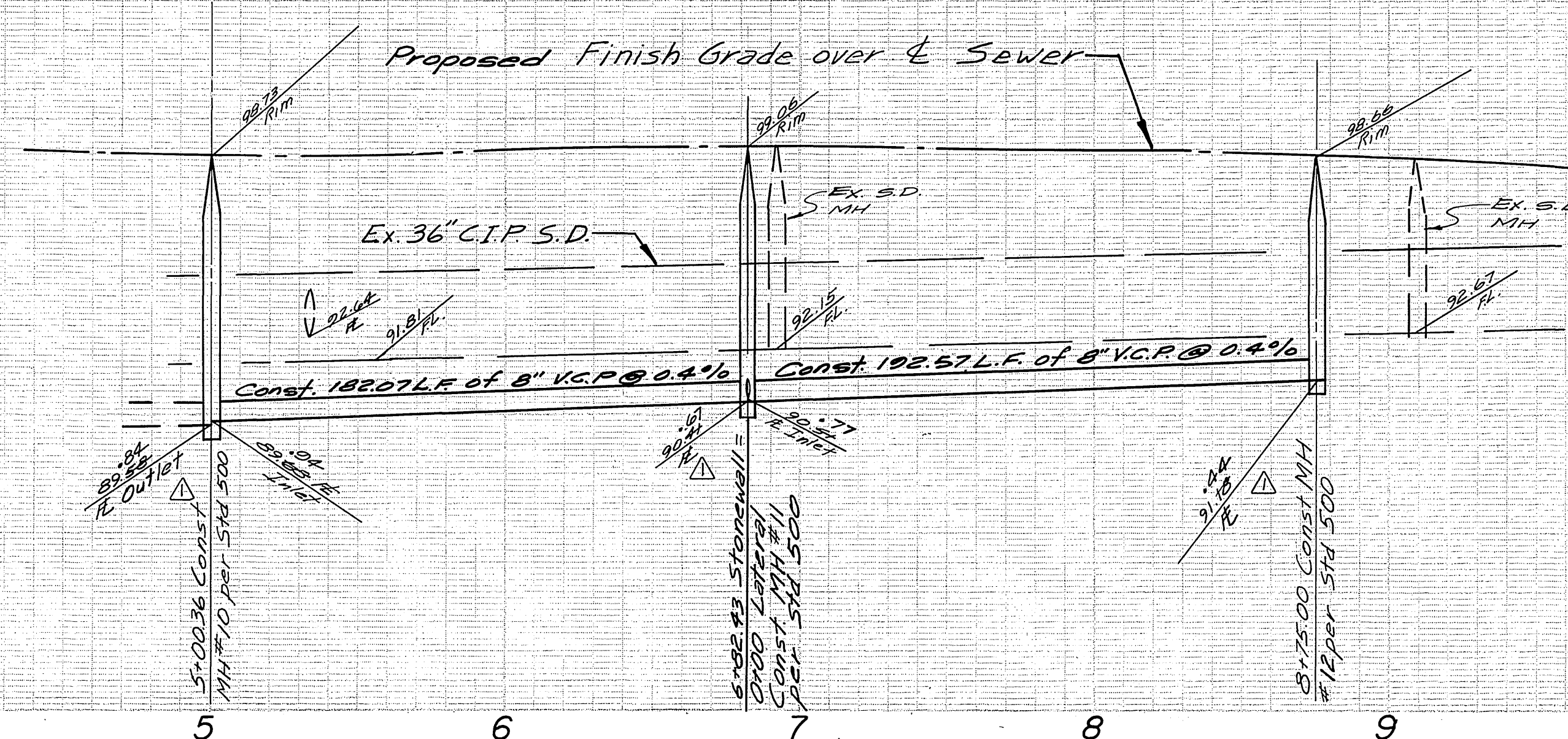
SEWER PLAN & PROFILE  
 TRACT 6761  
 STONEWALL DRIVE  
 GOLDEN AVENUE

ACCOUNT No. 75-135  
 DRAWING NUMBER  
 5-1083  
 SHEET 2 OF 5  
 SCALE: Horiz. 1"=40' Vert. 1"=4'

710

700

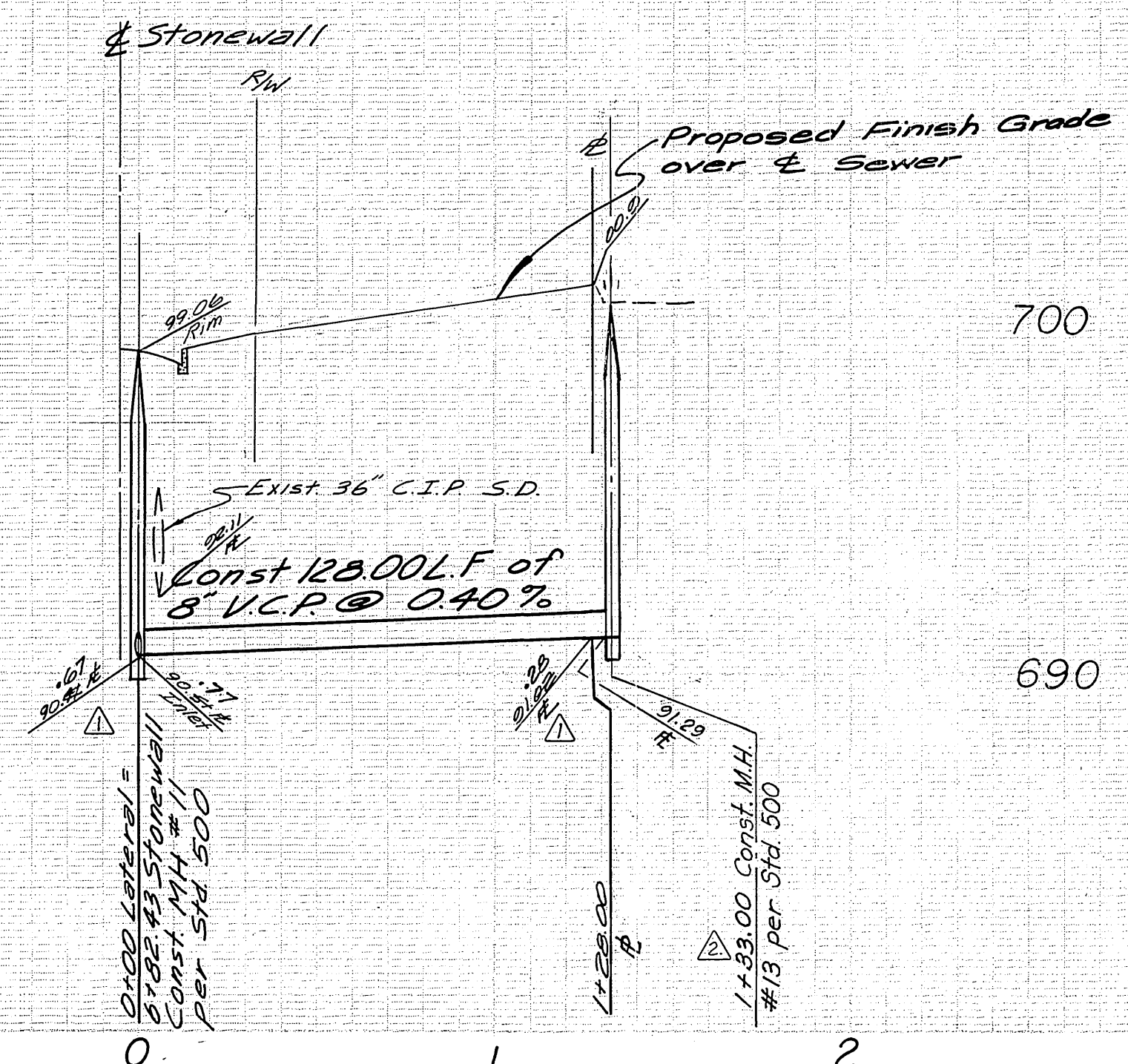
690



710

700

690

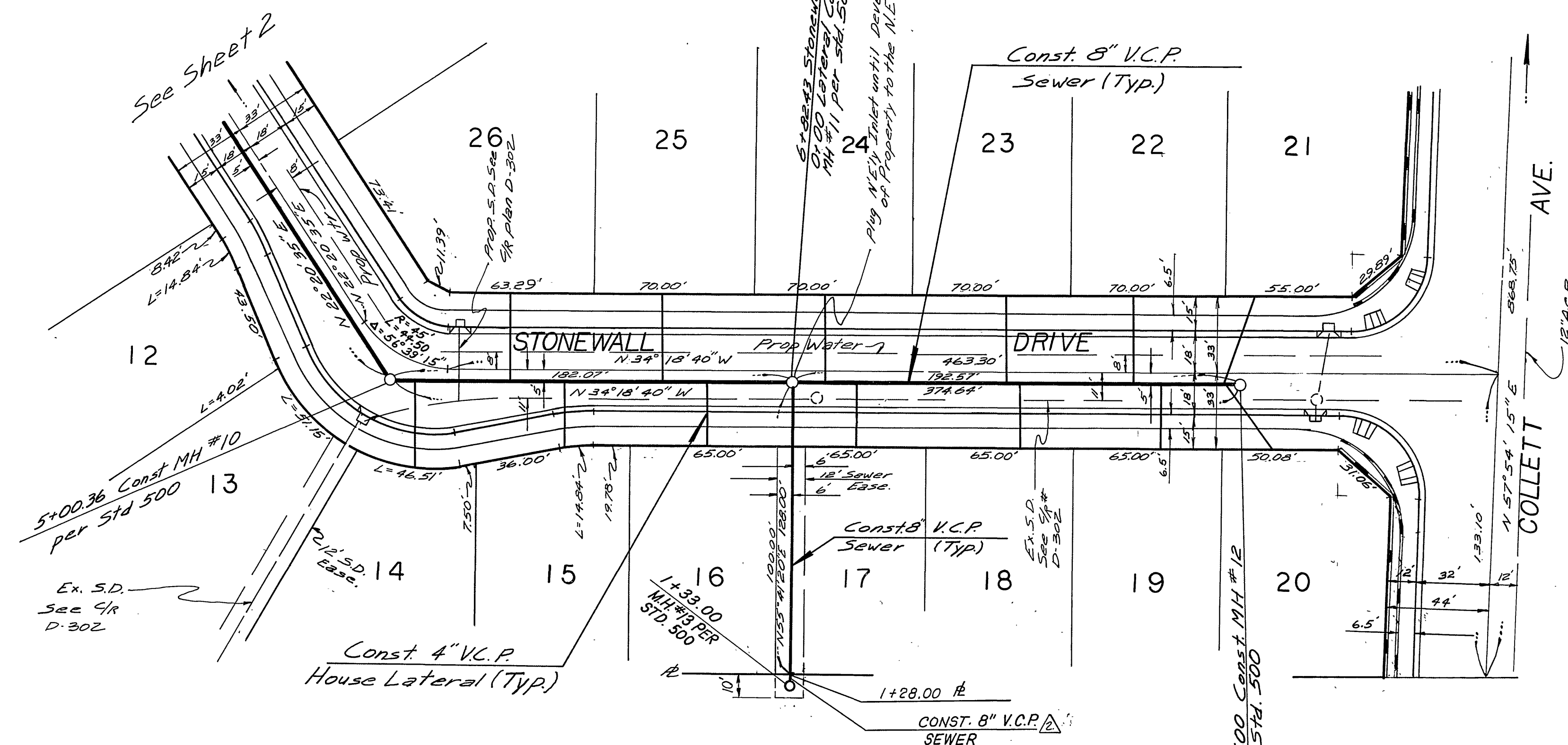


710

700

690

NOTE: FOR GENERAL NOTES  
SEE SHEET 1



NOTE: WYES FOR LOTS 14 THRU 20 ARE TO LAY FLAT AND LATERAL TO HAVE A 2% MINIMUM.

**BENCH MARK**  
R.R. spike in RR #24589J  
@ S.E. corner La Sierra  
Avenue and Collett Avenue  
c/r F.B. 978/5  
ELEV. 704.25

**ALBERT A. WEBB ASSOCIATES**  
CIVIL ENGINEERS  
RIVERSIDE, CALIFORNIA  
APPROVED BY: *[Signature]* DATE: 4/3/77  
R.E. No. 2876

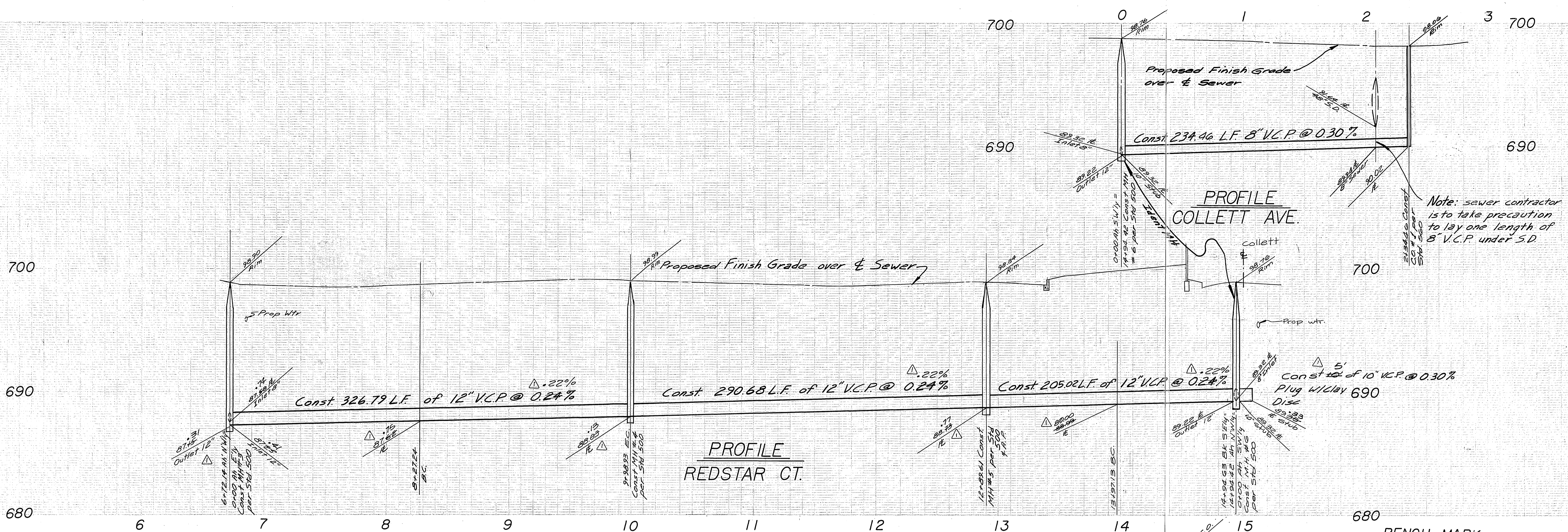
DESIGNED BY: R.L.T. DRAWN BY: M.C. CHECKED BY: B.M.

APPROVED BY: *[Signature]* DATE: 3-31-77  
CHIEF UTILITIES ENGINEER, WATER  
CITY OF RIVERSIDE, CALIFORNIA  
PUBLIC WORKS DEPARTMENT  
APPROVED BY: *[Signature]* DATE: 4-16-77  
PRINCIPAL ENGINEER  
TRAFFIC DIVISION  
CHIEF PUB. WKS. ENGR.

SEWER PLAN & PROFILE  
TRACT 6761  
STONEWALL DRIVE  
SCALE: Horiz. 1"=40' Vert. 1"=4'

ACCOUNT No. 75-135  
DRAWING NUMBER  
5-1083  
SHEET 3 OF 5  
75-135-B

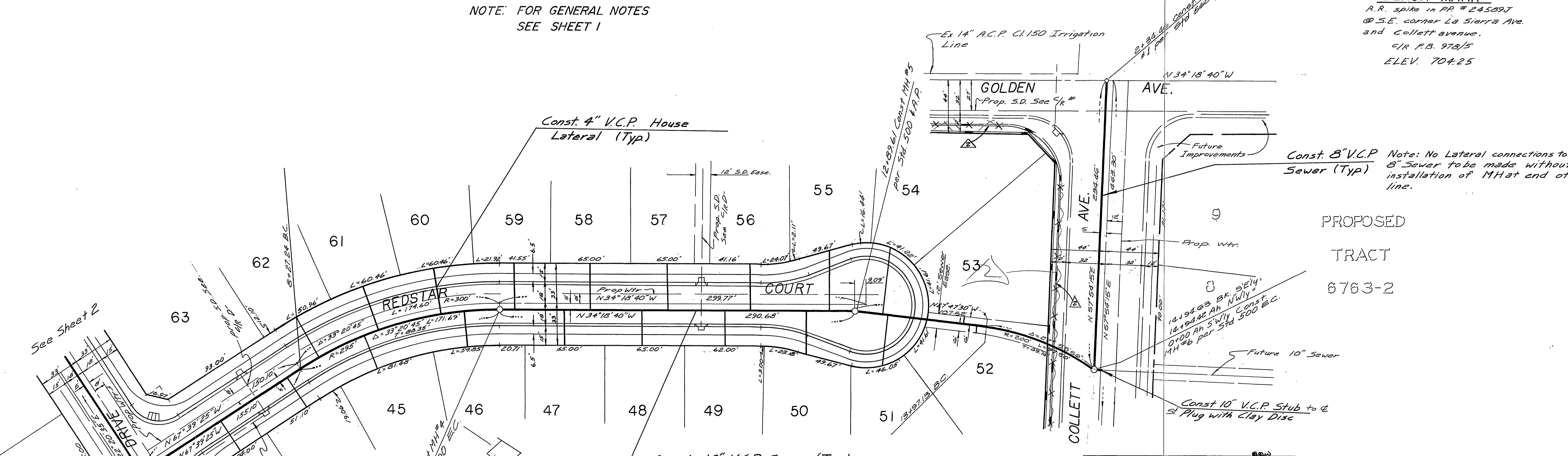




Note: sewer contractor is to take precaution to lay one length of 8" V.C.P. under S.D.

NOTE: FOR GENERAL NOTES SEE SHEET 1

**BENCH MARK**  
 R.R. spike in RP # 24589T  
 @ S.E. corner La Sierra Ave.  
 & Collett Avenue.  
 C/R F.B. 978/5  
 ELEV. 704.25



Note: No Lateral connections to 8" Sewer to be made without installation of Mhat end of line.

PROPOSED TRACT 6763-2

|  |   |   |   |   |
|--|---|---|---|---|
| <b>ALBERT A. WEBB ASSOCIATES</b><br>CIVIL ENGINEERS<br>RIVERSIDE, CALIFORNIA<br>APPROVED BY: <i>[Signature]</i> DATE: 12/3/76<br>R.E. No. 2876<br>W.O. 75-135 FOR: <i>Palmsetter Homes</i> F.B. 1032 | APPROVED BY: <i>[Signature]</i> DATE: 3-31-77<br>CHIEF UTILITIES ENGINEER, WATER            | CITY OF RIVERSIDE, CALIFORNIA<br>PUBLIC WORKS DEPARTMENT<br>APPROVED BY: <i>[Signature]</i> DATE: 4-26-77<br>PRINCIPAL ENGINEER<br>PARK DEPARTMENT<br>TRAFFIC DIVISION<br>CHIEF PUB. WKS. ENGR. | SEWER PLAN & PROFILE<br>TRACT 6761<br>REDSTAR COURT<br>COLLETT AVENUE<br>SCALE: Horiz. 1"=40' Vert. 1"=4' | ACCOUNT No. 75-135<br>DRAWING NUMBER<br><b>5-1083</b><br>SHEET 5 OF 5<br>75-135-B |
|  | DESIGNED BY: <i>[Signature]</i> DRAWN BY: <i>[Signature]</i> CHECKED BY: <i>[Signature]</i> |   | * AS BUILT 11-28-79 B.P.  |   |