

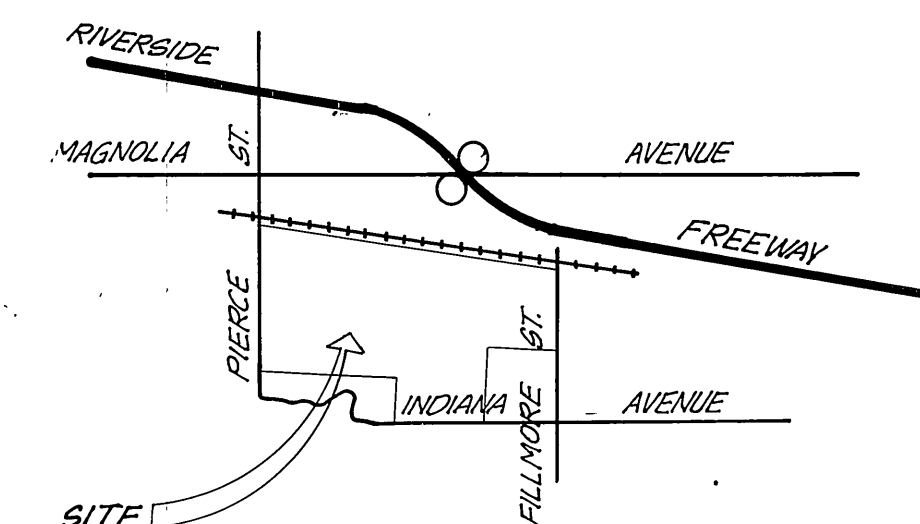
GENERAL NOTES:

- CONSTRUCTION SHALL BE IN ACCORDANCE WITH STANDARD SPECIFICATIONS FOR PUBLIC WORKS CONSTRUCTION, 1976 EDITION, AND CITY OF RIVERSIDE STD. DWG.
- IT SHALL BE THE RESPONSIBILITY OF THE CONTRACTOR TO CLEAR THE RIGHT OF WAY OF IRRIGATION LINES AND APPURTENANCES AND AT NO COST TO THE CITY.
- LOCATION OF WYES AND LATERALS TO BE DETERMINED AT THE DIRECTION OF THE OWNER.
- MANHOLE FRAMES AND COVERS TO BE SET TO PROPOSED PAVEMENT GRADES.
- LATERALS ARE 4" AND EXTEND TO THE PROPERTY LINE.
- PRIOR TO CONSTRUCTION OF SEWER, CONTRACTOR IS TO EXPOSE EXISTING SEWER AND CONTACT ENGINEER FOR VERIFICATION OF EXISTING ELEVATION.
- THE SEWER CONTRACTOR SHALL ADJUST MANHOLES TO FINAL GRADES AFTER PAVING IS COMPLETED.
- CONTRACTOR SHALL MAINTAIN TRAFFIC IN BOTH DIRECTIONS ON PIERCE STREET AT ALL TIMES DURING CONSTRUCTION.
- A PLUG SHALL BE INSTALLED AND WILL REMAIN IN PLACE WHERE THE NEW SEWER CONNECTS WITH THE EXISTING SEWER UNTIL THE NEW SEWER IS ACCEPTED BY THE CITY.

THE PRIVATE ENGINEER SIGNING THESE PLANS IS RESPONSIBLE FOR ASSURING THE ACCURACY AND ACCEPTABILITY OF THE WORK HEREON. IN THE EVENT OF DISCREPANCIES ARISING DURING CONSTRUCTION AS A RESULT OF ERRORS OR OMISSIONS, THE PRIVATE ENGINEER SHALL BE RESPONSIBLE FOR DETERMINING AN ACCEPTABLE SOLUTION AND REVISING THE PLANS FOR APPROVAL BY THE CITY.

CONSTRUCTION NOTES

- CONSTRUCT MANHOLES PER CITY OF RIVERSIDE PLAN No. 500
- CONSTRUCT CLEANOUT PER CITY OF RIVERSIDE PLAN No. 560



BENCH MARK

U.S.C. & G.S. B.M. K-38 1924 DISC IN HEADWALL
ON N.W. CORNER FILLMORE & S.F.R.R. TRACKS
E.B. 706/34 ELEV. 722.00

NOTICE TO CONTRACTOR:

THE EXISTENCE AND LOCATION OF ANY UNDERGROUND UTILITY PIPES OR STRUCTURES SHOWN ON THESE PLANS ARE OBTAINED BY A SEARCH OF AVAILABLE RECORDS. TO THE BEST OF OUR KNOWLEDGE THERE ARE NO EXISTING UTILITIES EXCEPT AS SHOWN ON THESE PLANS. THE CONTRACTOR IS REQUIRED TO TAKE PRECAUTIONARY MEASURES TO PROTECT THE UTILITY LINES SHOWN AND OTHER LINES NOT OF RECORD OR NOT SHOWN ON THESE PLANS.

CITY OF RIVERSIDE, DOMESTIC SYSTEMS

J. F. DAVIDSON ASSOCIATES
CIVIL ENGINEERS - SURVEYORS - PLANNERS
RIVERSIDE, CALIFORNIA

APPROVED BY *Robert J. Davidson* DATE 12/14/76
R.E. No. 13677

W.O. FOR: F.B.

CITY OF RIVERSIDE, CALIFORNIA
DEPARTMENT OF PUBLIC WORKS

APPROVED BY *[Signature]* DATE 6-9-77
OFFICE ENGINEER
TRAFFIC DIVISION
DIRECTOR OF PUBLIC WORKS

DESIGNED BY: DRAWN BY: CHECKED BY: DATE 6-9-77

AS BUILT 11-28-79 B.D.
SEWER PLAN AND PROFILE
TITLE SHEET
TRACT 6756-2

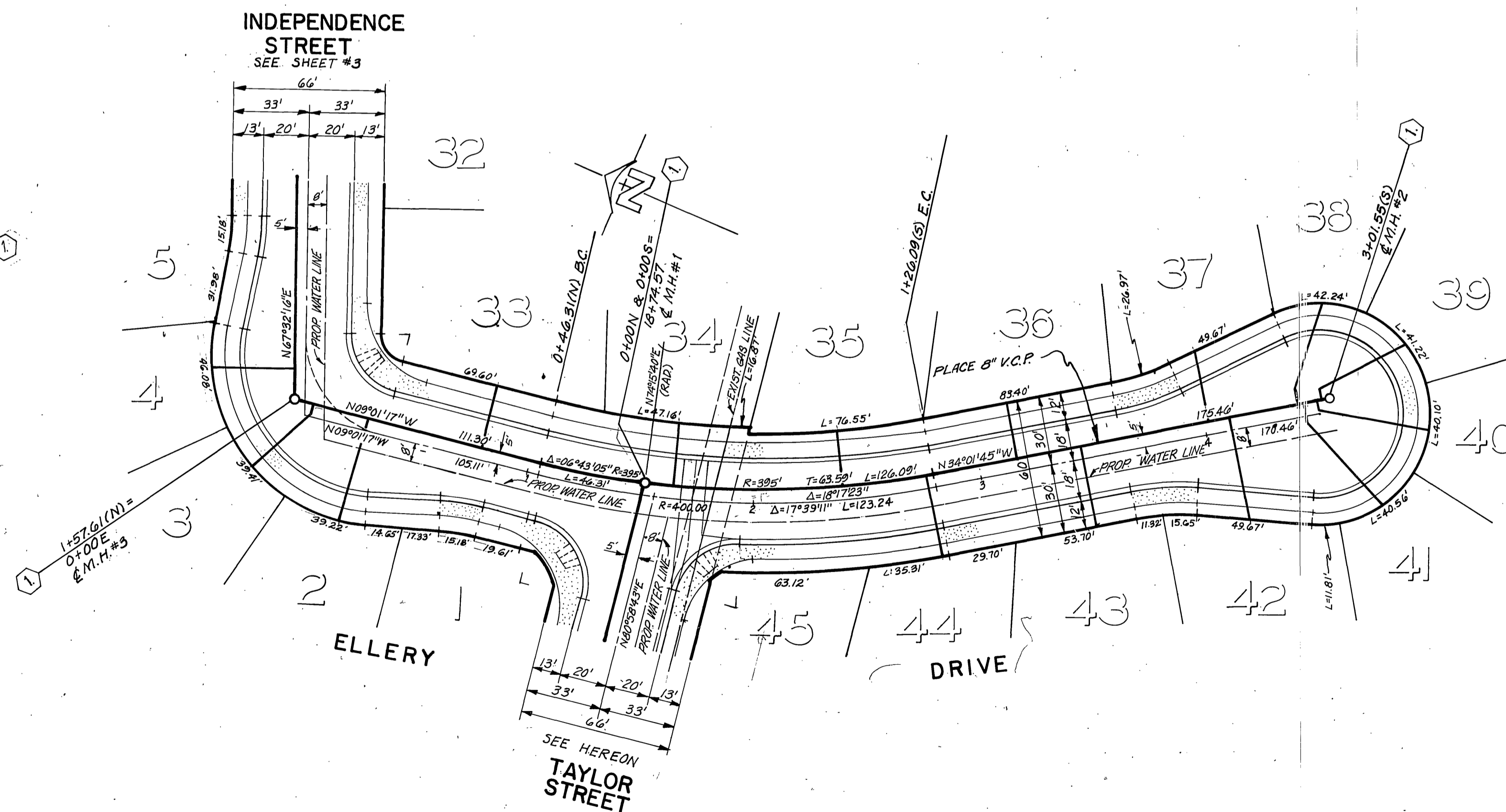
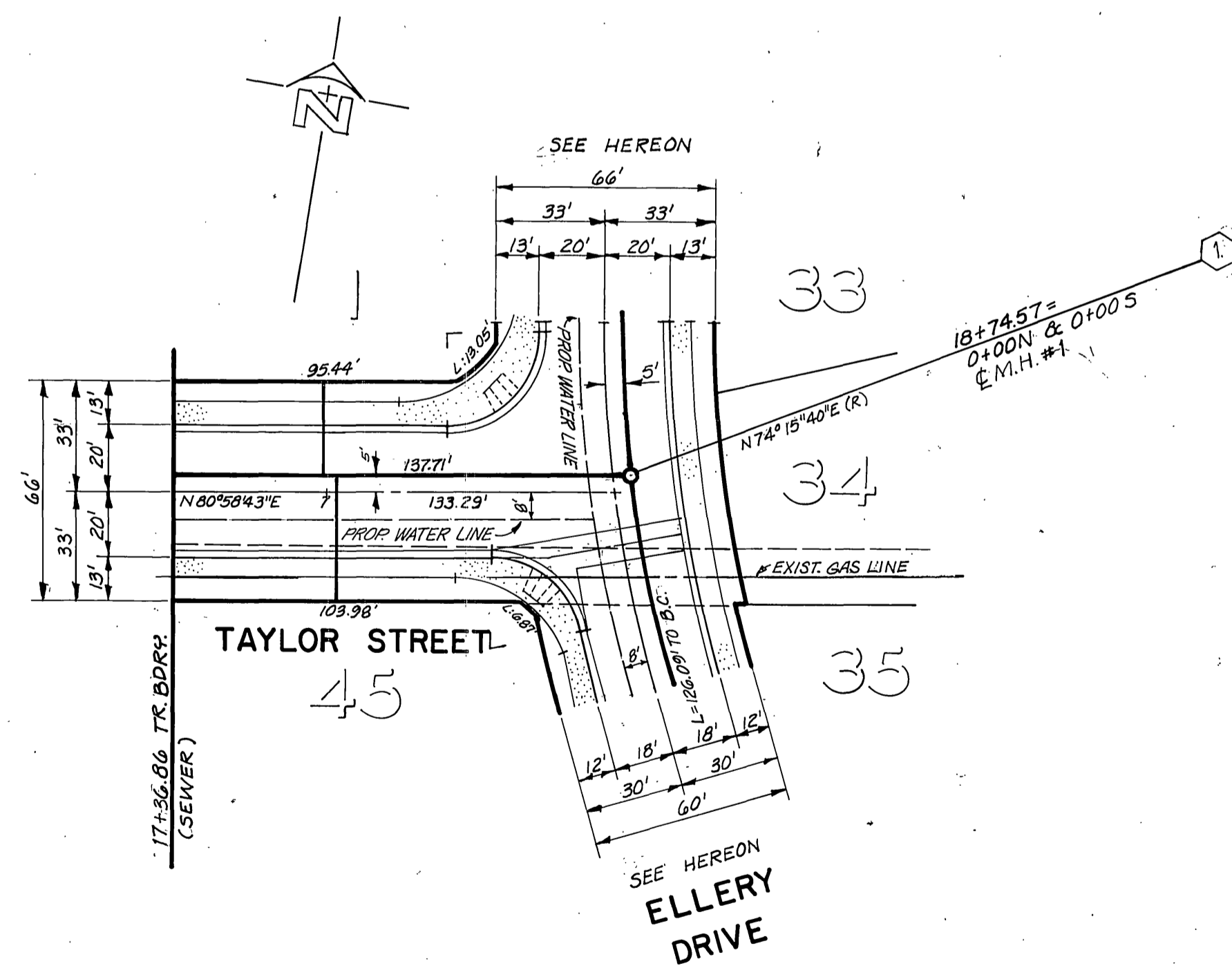
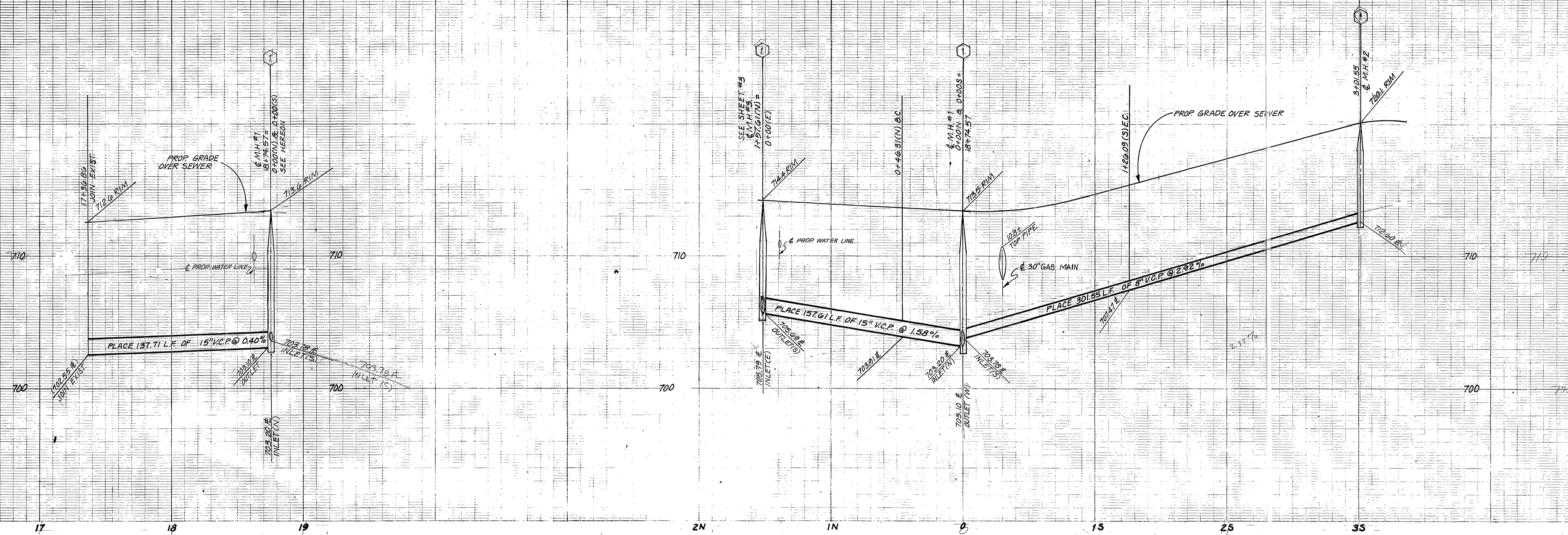
HORIZ. SCALE: 1" = VERT. SCALE: 1" =

PROJECT NO.

S - 1084

SHEET 1 OF 4

FILE NO.



BENCH MARK

U.S.C. & G.S. B.M. K-38 1924 DISC IN HEADWALL
ON N.W. CORNER FILLMORE & S.F.R. TRACKS
ELEV. 722.00

CITY OF RIVERSIDE, DOMESTIC SYSTEMS
BY: *Walter H. H. H.* 6-3-77
CHIEF UTILITIES ENGINEER WATER DATE

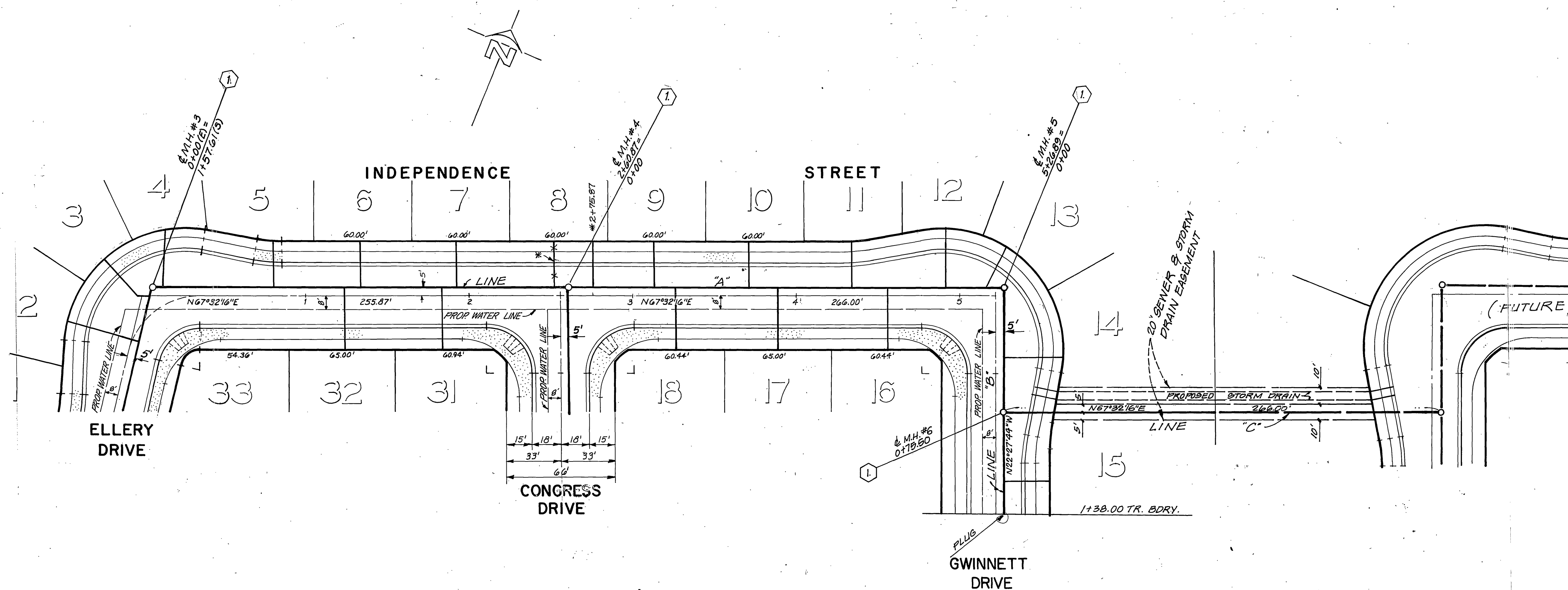
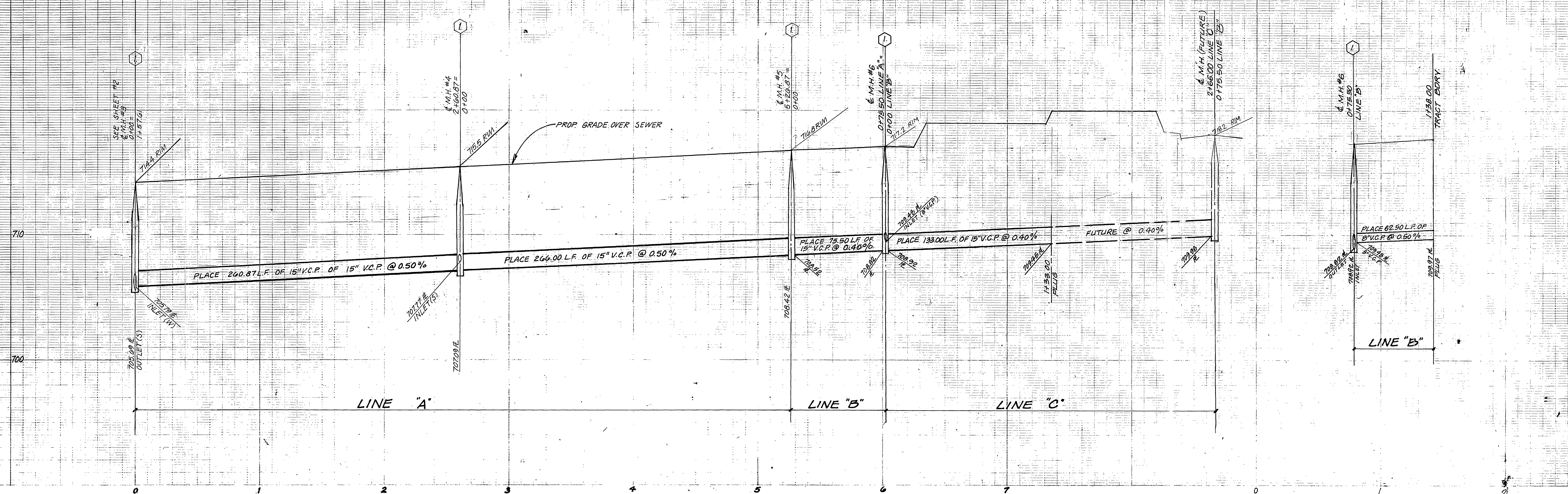
J. F. DAVIDSON ASSOCIATES
CIVIL ENGINEERS - SURVEYORS - PLANNERS
RIVERSIDE, CALIFORNIA
APPROVED BY: *Robert H. H. H.* DATE 12/16/76
R.E. No. 12691

MARK REVISIONS APPR. DATE
DESIGNED BY DRAWN BY CHECKED BY

CITY OF RIVERSIDE, CALIFORNIA
DEPARTMENT OF PUBLIC WORKS
APPROVED BY: *Walter H. H. H.* DATE 6-3-77
PRINCIPAL ENGINEER
TRAFFIC DIVISION
CHIEF P. W. ENGR.

SEWER PLAN AND PROFILE
TRACT 6756-2
TAYLOR STREET
ELLERY DRIVE
HORIZ. SCALE: 1" = 40' VERT. SCALE: 1" = 4'

AS BUILT 11-28-79 B.P.
PROJECT NO. 5-1084
SHEET 2 OF 4
FILE NO.



BENCH MARK
 U.S.C. & G.S. B.M. K-38 1924 DISC IN HEADWALL
 ON N.W. CORNER FILLMORE & S.F.R.R. TRACKS
 ELEV. 722.010
 F.B. 706/34

CITY OF RIVERSIDE, DOMESTIC SYSTEMS
 By: *Wesley Aylen* 6-3-77
 CHIEF UTILITIES ENGINEER, WATER DATE

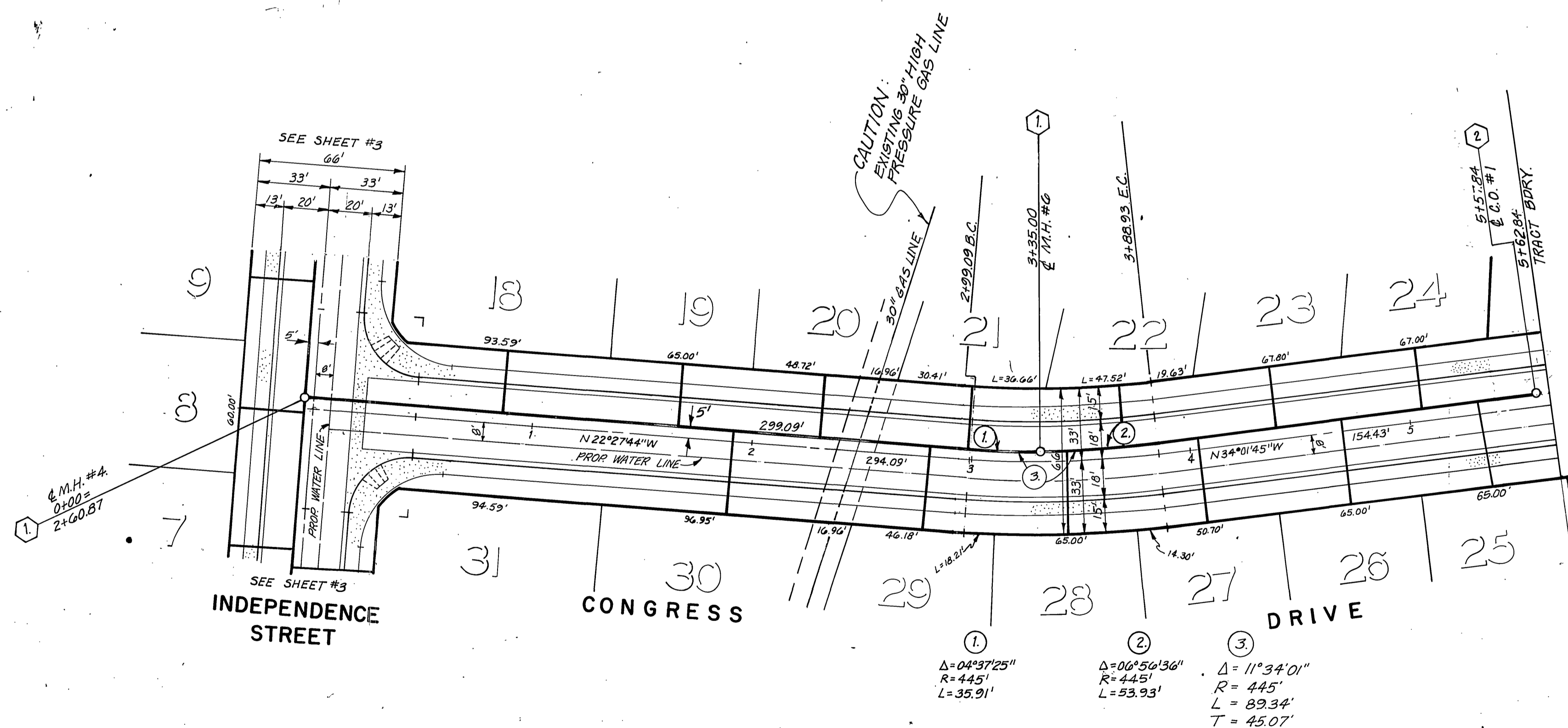
J. F. DAVIDSON ASSOCIATES
 CIVIL ENGINEERS - SURVEYORS - PLANNERS
 RIVERSIDE, CALIFORNIA
 APPROVED BY: *Robert S. Kopp* DATE 12/16/76
 R.E. No. 73669

MARK REVISIONS APPR. DATE
 DESIGNED BY: DRAWN BY: CHECKED BY:

CITY OF RIVERSIDE, CALIFORNIA
 DEPARTMENT OF PUBLIC WORKS
 APPROVED BY: *[Signature]* DATE 6-9-77
 PRINCIPAL ENGINEER
 PARK DEPARTMENT
 TRAFFIC DIVISION
 CHIEF P. W. ENGR.

SEWER PLAN AND PROFILE
 TRACT 3756-2
 INDEPENDENCE STREET
 HORIZ. SCALE: 1" = 40' VERT. SCALE: 1" = 4'

PROJECT NO. S-1084
 SHEET 3 OF 4
 FILE NO.



BENCH MARK

U.S.C. & G.S. B.M. K-38 1924 DISC IN HEADWALL
ON N.W. CORNER FILLMORE & S.F.R.R. TRACKS
F.B. 706/34 ELEV. 722.010

CITY OF RIVERSIDE, DOMESTIC SYSTEMS

By: Wesley Styler 6-3-77
CHIEF UTILITIES ENGINEER, WATER DATE

J. F. DAVIDSON ASSOCIATES
CIVIL ENGINEERS - SURVEYORS - PLANNERS
RIVERSIDE, CALIFORNIA

APPROVED BY Rabot Skipper DATE 12/16/76
R.E. No. 13649

W.C.	FOR:	FR
------	------	----

CITY OF RIVERSIDE, CALIFORNIA
DEPARTMENT OF PUBLIC WORKS

APPROVED BY	BY	DATE	APPROVED BY
PRINCIPAL ENGINEER	<i>AW</i>	<i>6/7</i>	<i>[Signature]</i>
PARK DEPARTMENT			DIRECTOR OF PUBLIC WORKS
TRAFFIC DIVISION			
CHIEF P. W. ENGR.	<i>W</i>	<i>6-9</i>	DATE <i>6-9-77</i>

SEWER PLAN AND PROFILE

TRACT 6756-2
CONGRESS DRIVE
GWINNETT DRIVE

HORIZ. SCALE: 1" = 40' VERT. SCALE: 1" = 4'

PROJECT NO.

S - 1084

SHEET 4 OF 4

FILE NO	
---------	--