

CONSTRUCTION NOTES

- CONSTRUCTION SHALL BE IN ACCORDANCE WITH STANDARD SPECIFICATIONS FOR PUBLIC WORKS CONSTRUCTION, 1976 EDITION AND CITY OF RIVERSIDE, DEPT. OF PUBLIC WORKS STANDARD DRAWINGS.
- WHERE THE PROPOSED SEWER CROSSES A WATER MAIN, THE CONTRACTOR SHALL ENCASE THE SEWER OR WATER MAIN PER PLD. WATER DIVISION STD. DRAWING NO. CWD-021.
- ALL STATIONING ON SEWER CENTERLINE.
- THE CONTRACTOR SHALL BE RESPONSIBLE TO REPAIR OR REPLACE IN KIND, AT HIS OWN EXPENSE, ANY IMPROVEMENTS DAMAGED BY HIS OPERATION DURING CONSTRUCTION.
- BACKFILL SHALL BE IN ACCORDANCE WITH CITY OF RIVERSIDE STD. DRAWING NO. 453.
- PIPE SHALL BE BEDDED PER CASE I, CITY OF RIVERSIDE STD. DRAWING NO. 452.
- IT SHALL BE THE RESPONSIBILITY OF THE CONTRACTOR TO CLEAR THE RIGHT OF WAY IN ACCORDANCE WITH THE PROVISIONS OF LAW AS IT AFFECTS EACH UTILITY INCLUDING IRRIGATION LINES AND APPURTENANCES AND AT NO COST TO THE CITY.
- LOCATION OF LATERALS TO BE DETERMINED IN THE FIELD AT THE DIRECTION OF THE OWNER. AVOID CONFLICT WITH PROPOSED AND/OR EXISTING FACILITIES.
- CONTRACTOR IS TO VERIFY EXISTING SEWER ELEVATIONS PRIOR TO CONSTRUCTION.
- QUANTITIES SHOWN ARE FOR INFORMATION ONLY AND THE CITY OF RIVERSIDE IS NOT RESPONSIBLE FOR THEIR ACCURACY.
- THE SEWER CONTRACTOR SHALL ADJUST MANHOLES TO FINAL GRADE AFTER PAVING IS COMPLETED.
- A PLUG SHALL BE INSTALLED AND WILL REMAIN IN PLACE WHERE THE NEW SEWER CONNECTS WITH THE EXISTING SEWER UNTIL THE NEW SEWER IS ACCEPTED BY THE CITY.

CONSTRUCTION LEGEND

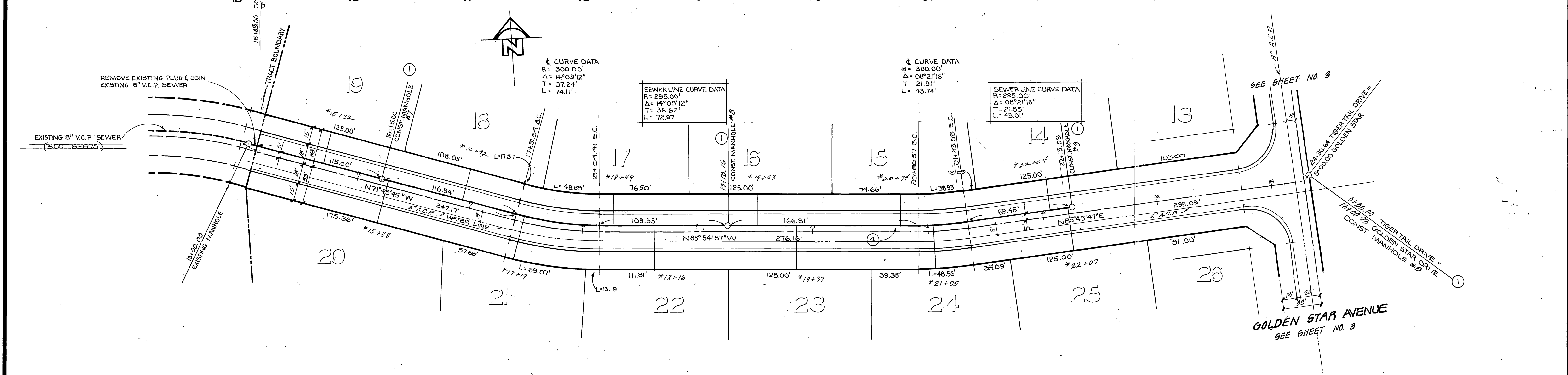
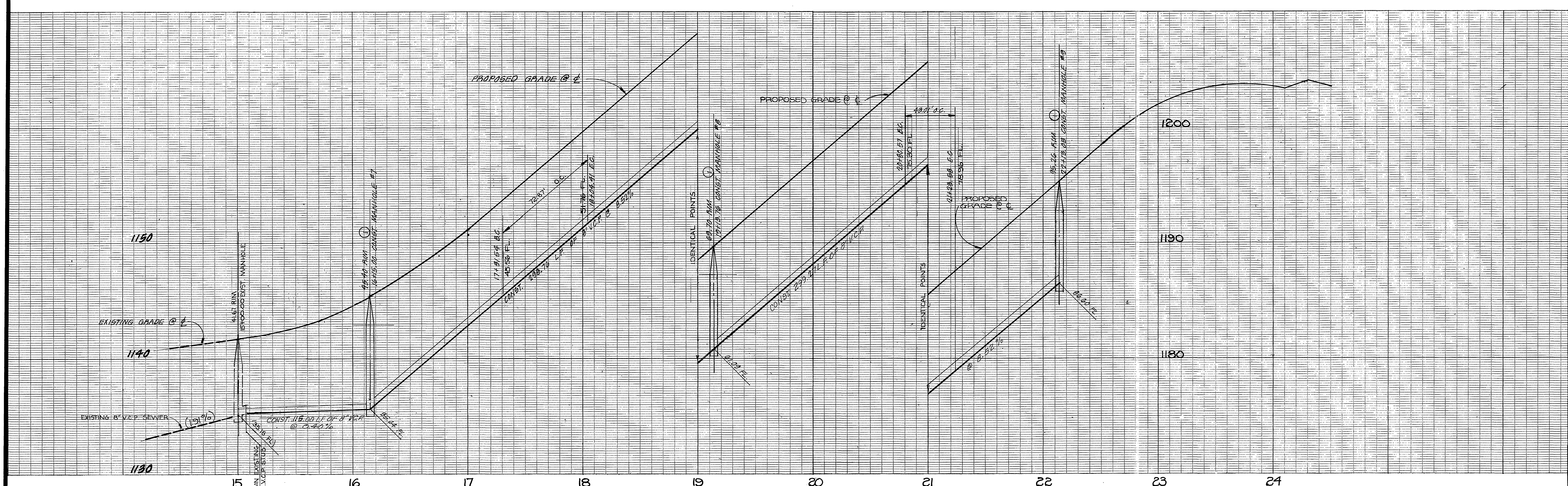
1	CONST. MANHOLE PER CITY OF RIVERSIDE STD. DRAWING NO. 500.	8 EA.
2	CONST. 4" V.C.P. LATERAL PER CITY OF RIVERSIDE STD. DRAWING NO. 562.	1292 LF.
3	CONST. CLEAN OUT PER CITY OF RIVERSIDE STD. DRAWING NO. 560.	2 EA.
4	CONST. 8" V.C.P. SEWER MAIN.	2.673 LF.

NOTICE TO CONTRACTOR

THE EXISTENCE AND LOCATION OF ANY UNDERGROUND UTILITY PIPES OR STRUCTURES SHOWN ON THIS PLAN ARE OBTAINED BY A SEARCH OF THE AVAILABLE RECORDS TO THE BEST OF OUR KNOWLEDGE THERE ARE NO EXISTING UTILITIES EXCEPT AS SHOWN ON THESE PLANS. THE CONTRACTOR IS REQUIRED TO TAKE DUE PRECAUTIONARY MEASURES TO PROTECT THE UTILITY LINES SHOWN AND ANY OTHER LINES NOT OF RECORD OR NOT SHOWN ON THIS PLAN.

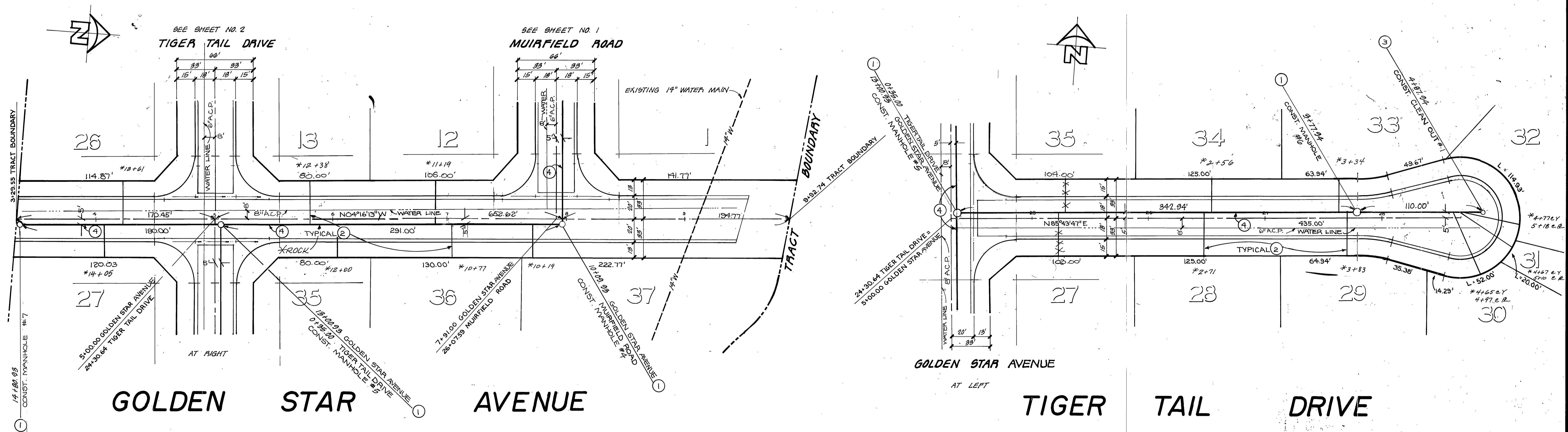
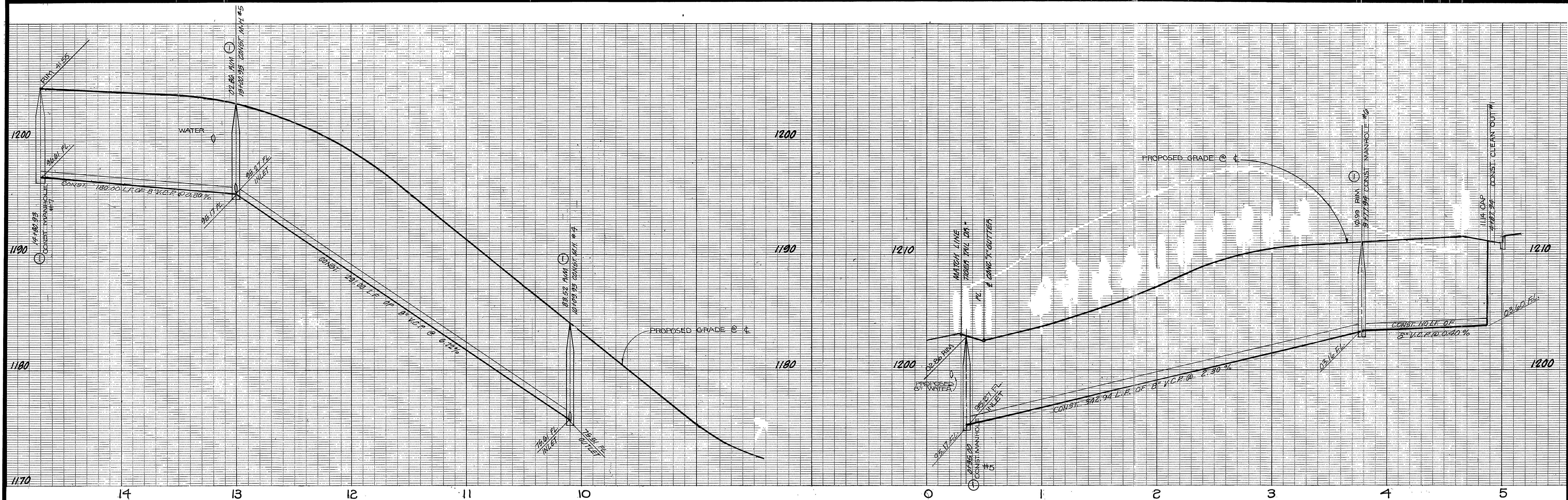
NOTE:
THESE PLANS ARE FOR SEWER CONSTRUCTION ONLY!

APPROVED BY: <i>Wally Hyle</i> CHIEF UTILITIES ENGINEER WATER	DATE: 12-1-76
HAWKINS, ROBERTSON & ASSOCIATES ENGINEERS - SURVEYORS 3756 ELIZABETH STREET - RIVERSIDE, CALIFORNIA 92504 9/9/76 DATE BENCH MARK: F&I FOUND P.K. AND CITY TAG IN M.D. OF G.E. CURB RETURN @ MUIRFIELD AND LAURIE DRIVE. ELEV. = 1110.84	
CITY OF RIVERSIDE, CALIFORNIA DEPARTMENT OF PUBLIC WORKS APPROVED BY: BY: <i>[Signature]</i> DATE: 1/25/77 PARK DEPARTMENT TRAFFIC DIVISION ASSISTANT CITY ENGINEER	
TRACT NO. 7090 SEWER PLAN & PROFILE MUIRFIELD ROAD HORIZ. SCALE: 1" = 40' VERT. SCALE: 1" = 4'	
PROJECT NO. S-1086 SHEET 1 OF 3 FILE NO. 2640	



TIGER TAIL DRIVE

APPROVED BY: <i>Wally Hylle</i> 12-74 CHIEF UTILITIES ENGINEER, WATER		HAWKINS, ROBERTSON & ASSOCIATES ENGINEERS SURVEYORS 3756 ELIZABETH STREET, RIVERSIDE, CALIFORNIA 92506 DATE 9/19/76 BENCH MARK: F&I FOUND PA. AND CITY TAG IN M.D.G. OF S.E. CURB RETURN @ MUIRFIELD AND LAURIE DRIVE. ELEV. 110.84		CITY OF RIVERSIDE, CALIFORNIA DEPARTMENT OF PUBLIC WORKS APPROVED BY: <i>[Signature]</i> DATE 4-25-77 OFFICE ENGINEER PARK DEPARTMENT TRAFFIC DIVISION ASSISTANT CITY ENG.		*AS BUILT 8-78 RPT TRACT NO 7090 SEWER PLAN & PROFILE TIGER TAIL DRIVE HORIZ. SCALE: 1" = 40' VERT. SCALE: 1" = 4' PROJECT NO. 1 S-1086 SHEET 2 OF 3 FILE NO. 2040	
-----------------------------------------------------------------------------	--	------------------------------------------------------------------------------------------------------------------------------------------------------------------------------------------------------------------------------------------------------------	--	----------------------------------------------------------------------------------------------------------------------------------------------------------------------------------------------	--	---------------------------------------------------------------------------------------------------------------------------------------------------------------------------------------------------------------------	--



APPROVED BY: <i>Walter J. Hylton</i> CHIEF UTILITIES ENGINEER, WATER DATE: 12-1-74		HAWKINS, ROBERTSON & ASSOCIATES ENGINEERS SURVEYORS 3756 ELIZABETH STREET - RIVERSIDE CALIFORNIA 92506 DATE: 9/9/74 Charles E. Robertson R.C.E. 15016		CITY OF RIVERSIDE, CALIFORNIA DEPARTMENT OF PUBLIC WORKS APPROVED BY: <i>Walter J. Hylton</i> OFFICE ENGINEER DATE: 4-25-77 TRAFFIC DIVISION ASSISTANT CITY ENG.		TRACT NO. 7090 SEWER PLAN & PROFILE GOLDEN STAR AVENUE & TIGER TAIL DRIVE HORIZ. SCALE: 1" = 40' VERT. SCALE: 1" = 4' PROJECT NO. S-1086 SHEET 3 OF 3 FILE NO. 2640	
DESIGNED BY: <i>WJH</i> DRAWN BY: <i>WJH</i> CHECKED BY: <i>WJH</i>		BENCH MARK: F&I FOUND P.A. AND CITY TAG IN M.O.C. OF S.E. CORNER RETURN @ MUIRFIELD AND LAURIE DRIVE. ELEV. = 110.84		* 43 BUILT 8-78 KPT			