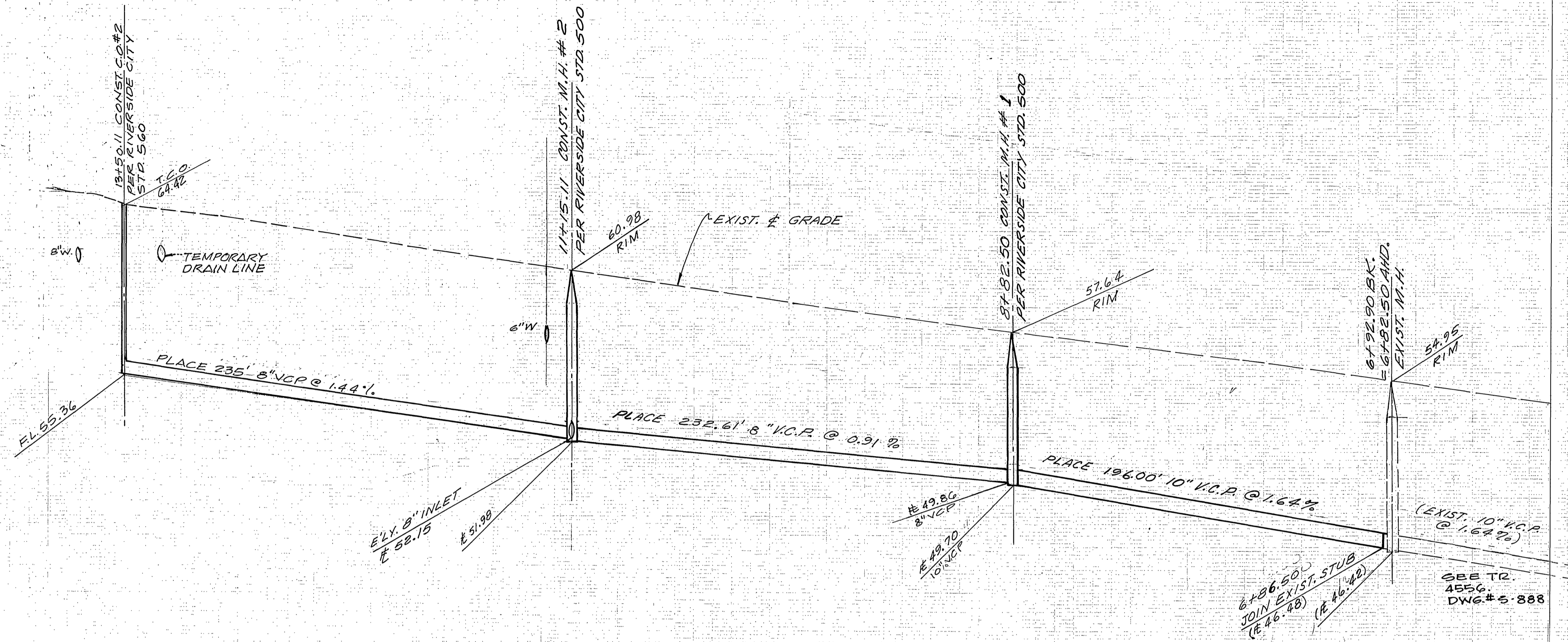
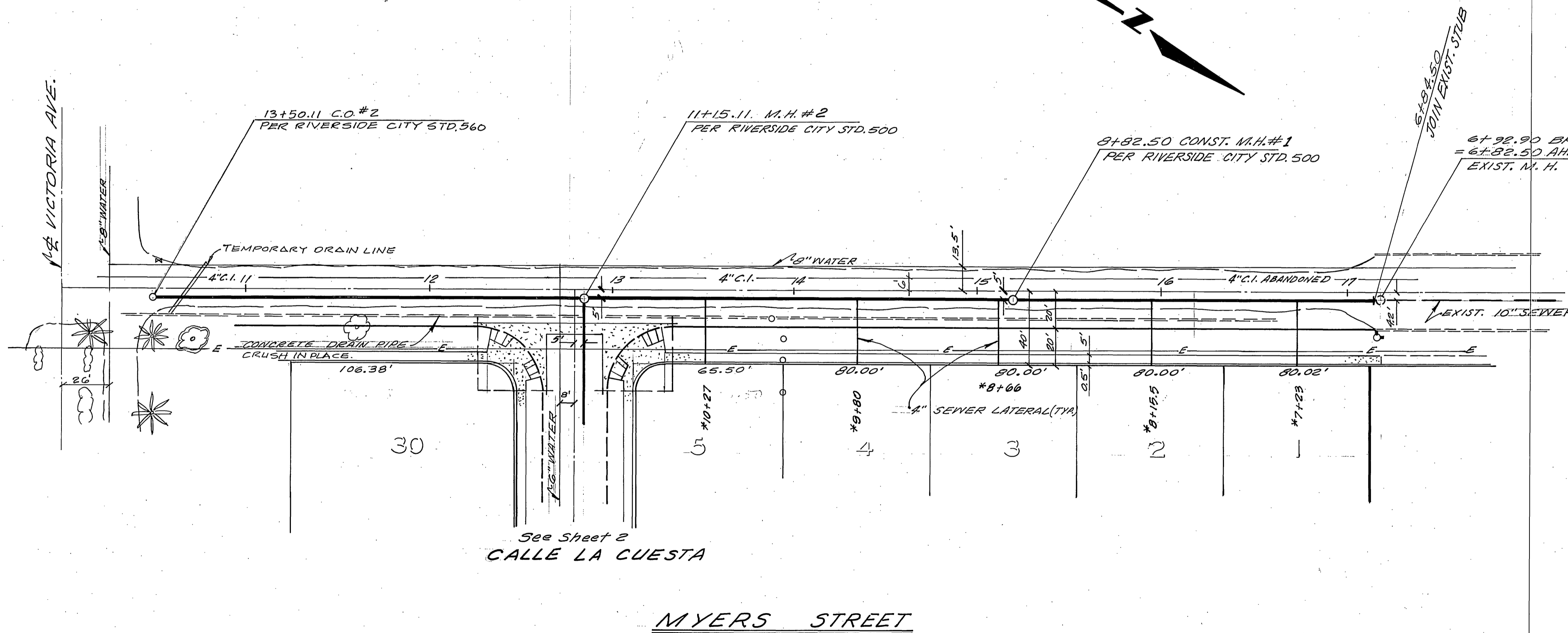


860

860



14 13 12 11 10 9 8 7



- NOTES:**
1. Location of laterals to be determined in the field at the direction of the owner. Avoid conflict with proposed and/or existing facilities.
  2. Contractor is to verify existing sewer elevation prior to construction.
  3. The sewer contractor shall adjust manholes to final grade after paving is completed.
  4. A plug shall be installed and will remain in place where the new sewer connects with the existing sewer until the new sewer is accepted by the city.
  5. It shall be the responsibility of the contractor to clear the right of way in accordance with the provisions of law as it affects each utility including irrigation lines and appurtenances and at no cost to the city.
  6. Construction shall be in accordance with the City of Riverside, Department of Public Works, Standard Drawings, and the Standard Specifications for Public Works Construction, 1976 Edition.

**BENCH MARK**  
 EA-G: Fd. 1/2" I.P. capped @ Intersect.  
 Victoria Ave. & Harrison St.  
 ELEV. 856.399

CITY OF RIVERSIDE  
 DOMESTIC SYSTEM IRRIGATION SYSTEM  
 GAGE CANAL SYSTEM, SEWER

By: *[Signature]*  
 CHIEF UTILITIES ENGINEER, WATER

DATE: 4-7-77

THE PRIVATE ENGINEER SIGNING THESE PLANS IS RESPONSIBLE FOR ASSURING THE ACCURACY AND ACCEPTABILITY OF THE WORK HEREON. IN THE EVENT OF DISCREPANCIES ARISING DURING CONSTRUCTION AS A RESULT OF ERRORS OR OMISSIONS, THE PRIVATE ENGINEER SHALL BE RESPONSIBLE FOR DETERMINING AN ACCEPTABLE SOLUTION AND REVISING THE PLANS FOR APPROVAL BY THE CITY.

NESTE, BRUDIN & STONE, Incorporated  
 CIVIL ENGINEERS

APPROVED BY:  
*[Signature]*  
 REGISTERED CIVIL ENGINEER NO. 14232

DATE: 12/21/76

MARK	REVISIONS	APPR.	DATE

DESIGNED BY: \_\_\_\_\_ DRAWN BY: \_\_\_\_\_ CHECKED BY: \_\_\_\_\_

CITY OF RIVERSIDE, CALIFORNIA  
 DEPARTMENT OF PUBLIC WORKS

APPROVED BY: *[Signature]*  
 CHIEF P. W. ENGR.

DATE: 4-13-77

\*AS BUILT 6-77 KPT

INDEXED S.T.

SEWER PLAN AND PROFILE

TRACT 8145  
 MYERS STREET

PROJECT NO. 5-1087

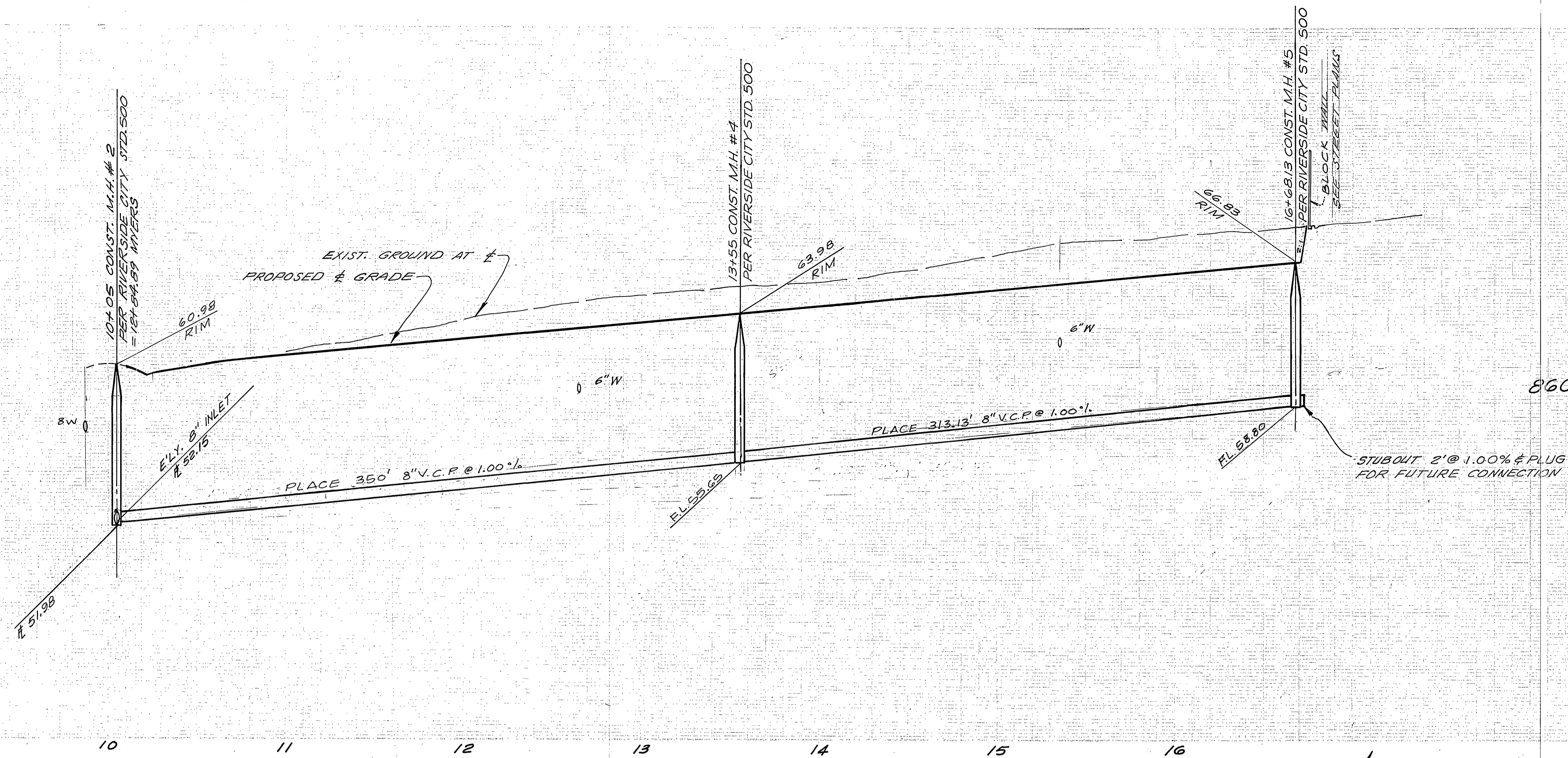
SHEET 1 OF 3

HORIZ. SCALE: 1" = 40' VERT. SCALE: 1" = 4'

FILE NO. P-4-9858

860

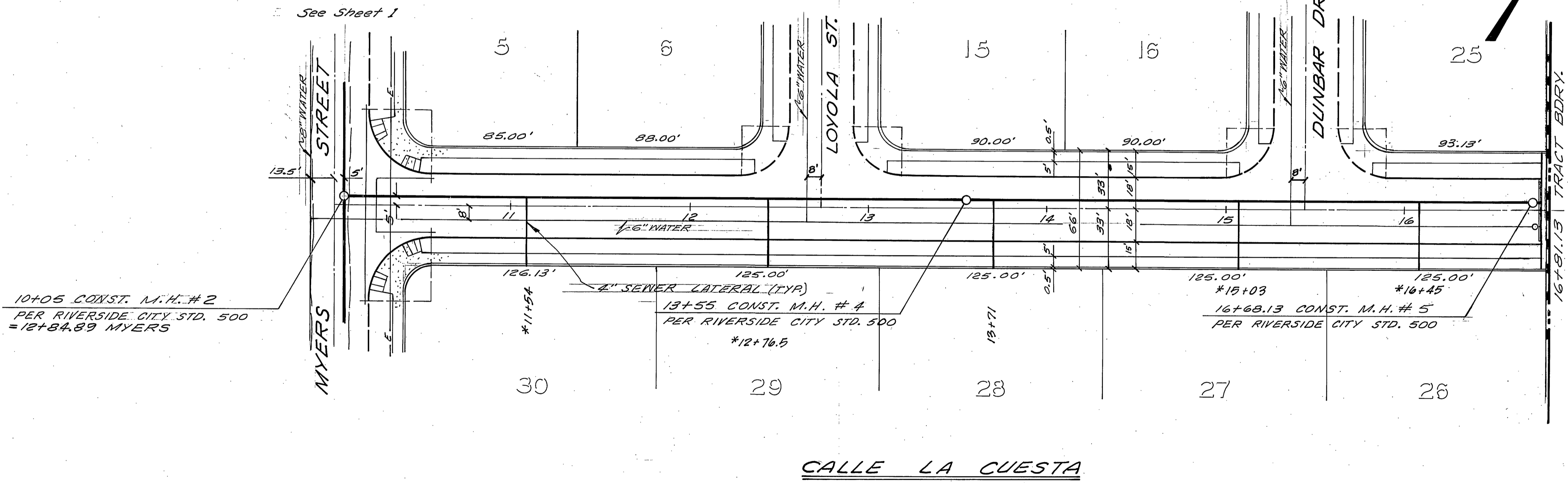
860



See Sheet 1

See Sheet 3

See Sheet 3



CALLE LA CUESTA

**BENCH MARK**  
 E+G: Fd. 1/2" I.P. capped @ intersection  
 Victoria Ave. & Harrison St.  
 ELEV. 856.399

CITY OF RIVERSIDE  
 DOMESTIC SYSTEM, IRRIGATION SYSTEM  
 GAGE CANAL SYSTEM, SEWER

NESTE, BRUDIN & STONE, Incorporated  
 CIVIL ENGINEERS

APPROVED BY:  
*Wesley Taylor* 4-7-77  
 CHIEF UTILITIES ENGINEER, WATER

DATE: 12/21/76

MARK REVISIONS APPR. DATE  
 DESIGNED BY DRAWN BY CHECKED BY

CITY OF RIVERSIDE, CALIFORNIA  
 DEPARTMENT OF PUBLIC WORKS

APPROVED BY: *[Signature]*  
 PRINCIPAL ENGINEER  
 PARK DEPARTMENT  
 TRAFFIC DIVISION  
 CHIEF P. W. ENGR.

DATE: 4-13-77

\*AS BUILT 6-77 LPT

SEWER PLAN AND PROFILE

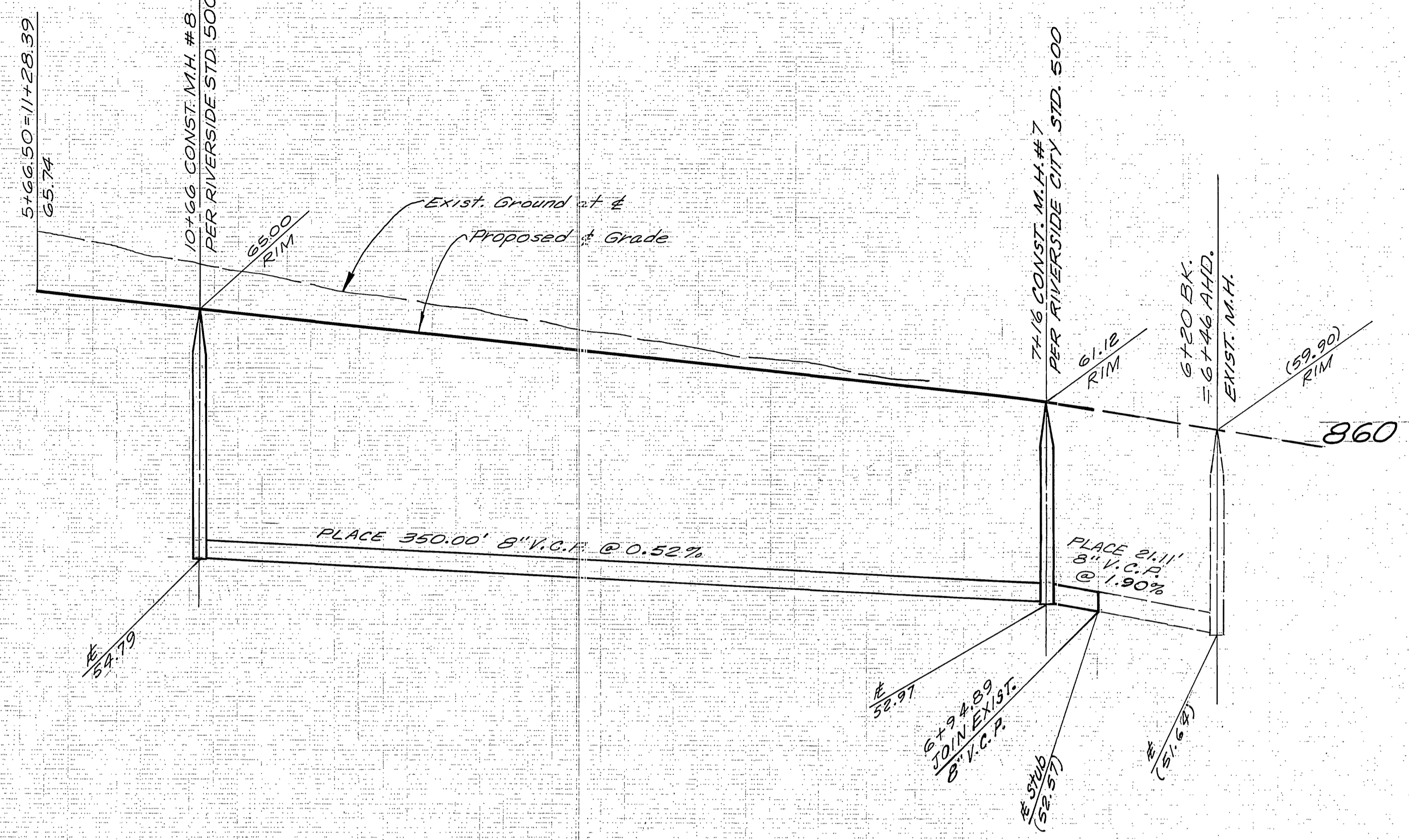
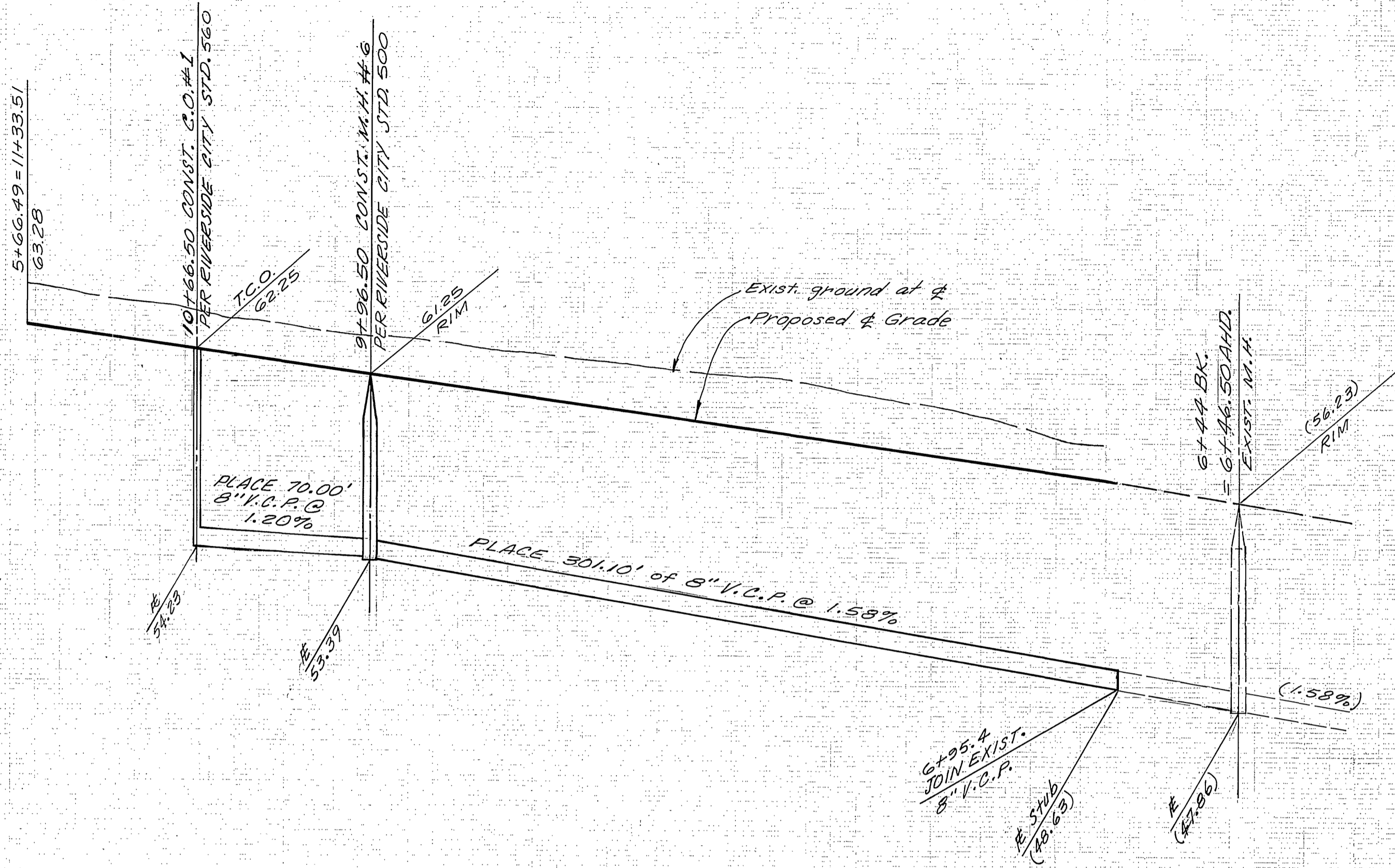
TRACT 8145  
 CALLE LA CUESTA

PROJECT NO. S-1087  
 SHEET 2 OF 3

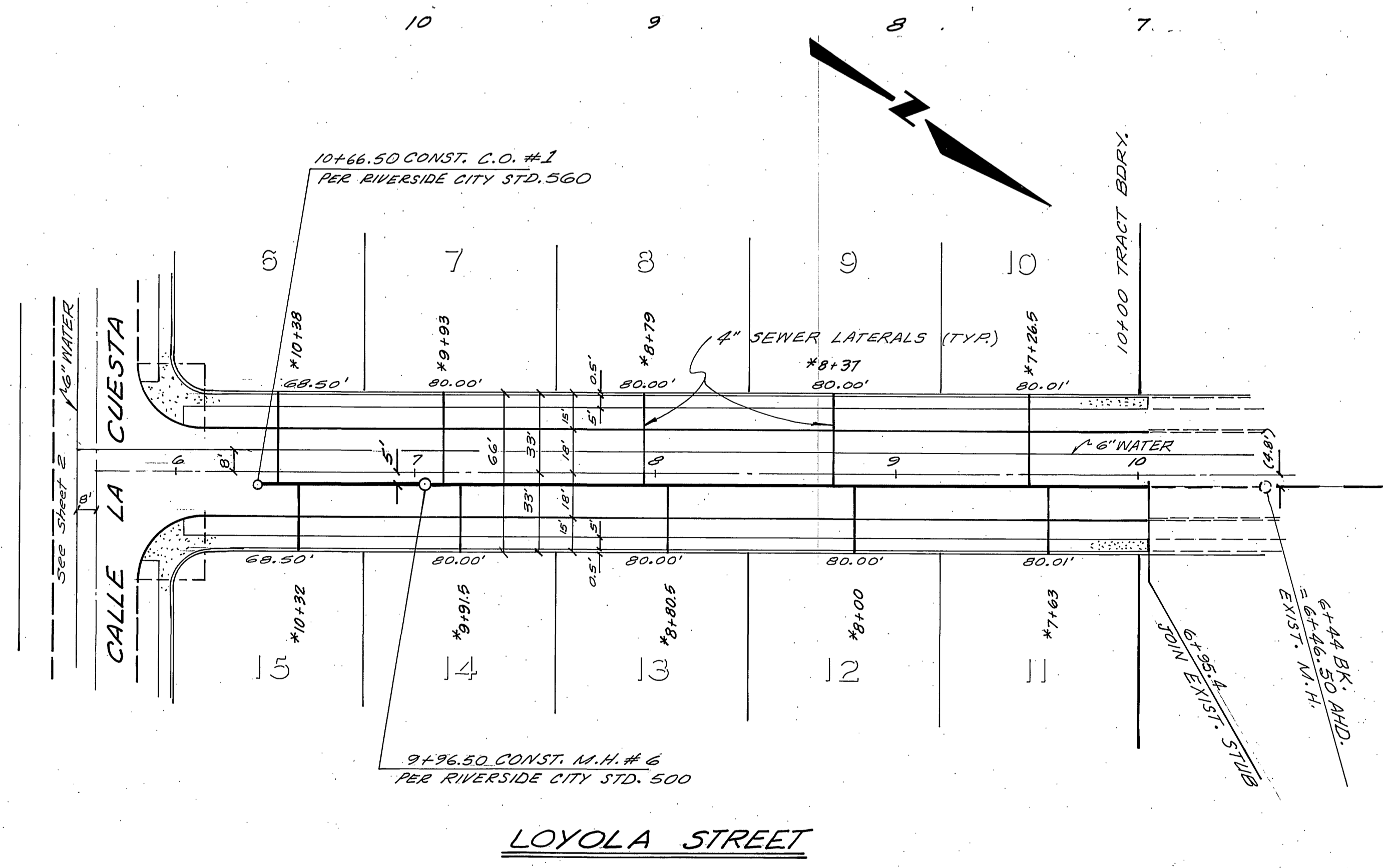
HORIZ. SCALE: 1" = 40' VERT. SCALE: 1" = 4'

FILE NO. P-4-9858

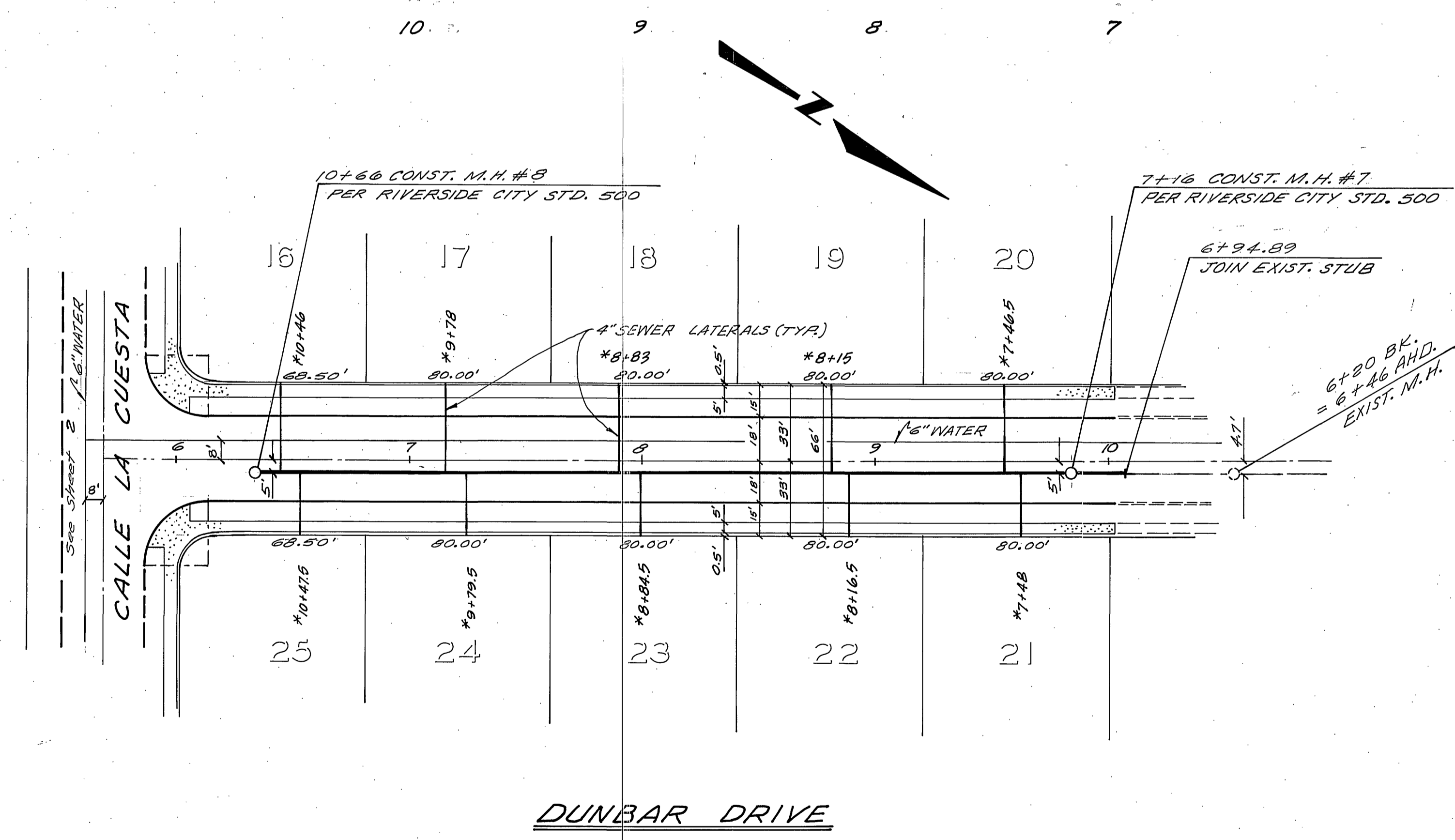
860



860



LOYOLA STREET



DUNBAR DRIVE

**BENCH MARK**  
 EA-G: Fd. 1/2" I.P. capped @ intersection  
 Victoria Ave. & Harrison St.  
 ELEV. 856.399

CITY OF RIVERSIDE  
 DOMESTIC SYSTEM, IRRIGATION SYSTEM  
 GAGE CANAL SYSTEM, SEWER

NESTE, BRUDIN & STONE, Incorporated  
 CIVIL ENGINEERS

APPROVED BY: *[Signature]*  
 REGISTERED CIVIL ENGINEER NO. 14232

DATE: 12/21/76

By: *[Signature]*  
 CHIEF UTILITIES ENGINEER, WATER

DATE: 4-7-77

MARK	REVISIONS	APPR.	DATE

CITY OF RIVERSIDE, CALIFORNIA  
 DEPARTMENT OF PUBLIC WORKS

APPROVED BY: *[Signature]*  
 DIRECTOR OF PUBLIC WORKS

DATE: 4-14-77

\*AS BUILT 6-77 WPT

SEWER PLAN AND PROFILE

TRACT 8145  
 LOYOLA STREET  
 DUNBAR DRIVE

PROJECT NO. S-1087  
 SHEET 3 OF 3

HORIZ. SCALE: 1" = 40'  
 VERT. SCALE: 1" = 4'

FILE NO.