

**GENERAL NOTES:**

1. Construction shall be in accordance with the Standard Specifications for Public Works Construction 1976 Edition and the City of Riverside Standard Drawings.
2. It shall be the responsibility of the Contractor to clear the Right of Way in accordance with the provisions of law as it affects each utility including irrigation lines and appurtenances and at no cost to the City.
3. Pipe shall be bedded per Case I, Standard Drawing No. 452, unless otherwise specified on the plans.
4. Location of wye, laterals and saddles to be determined in the field at the direction of the owner.
5. All stubs and laterals to be constructed in accordance with Standard Drawing No. 562. Stubs shall be plugged and capped.
6. Manhole frames and covers to be set as noted in profile by Sewer Contractor after final paving of streets.
7. Laterals are to be 4" V.C.R. and extended to property line.
8. Prior to construction of the Sewer, The Contractor is to expose the existing sewer and contact the Engineer for verification of existing location and elevation.
9. Plugs shall be installed and will remain in place where the new Sewer connects with the existing Sewer until such time as the new sewer is accepted by the City.

**CONSTRUCTION NOTES:**

1. Construct 10" x 4" Saddle.
2. Construct 4" V.C.R. Lateral to property line.
3. Construct 8" V.C.R. Sewer Line.
4. Construct Manhole per City Standard No. 500.
5. Remove existing Cleanout and Construct Manhole per City Standard No. 500.
6. Construct 8" V.C.R. Stub and Plug.
7. Join existing Wye. (See Note (4) on Sheet No. 2.
8. Encase Sewer Lateral 4.5' each side of Water Main per Std. Dwg. C.W.D. 023-Type "B".

**NOTICE TO CONTRACTOR:**

The existence and location of underground utility pipes or structures shown on these plans are obtained by a search of the available records. To the best of our knowledge there are no existing utilities except as shown on these plans. The Contractor is required to take due precautionary measures to protect the utility lines shown and any other lines not of record or not shown on these plans.

**ENGINEER'S NOTE:**

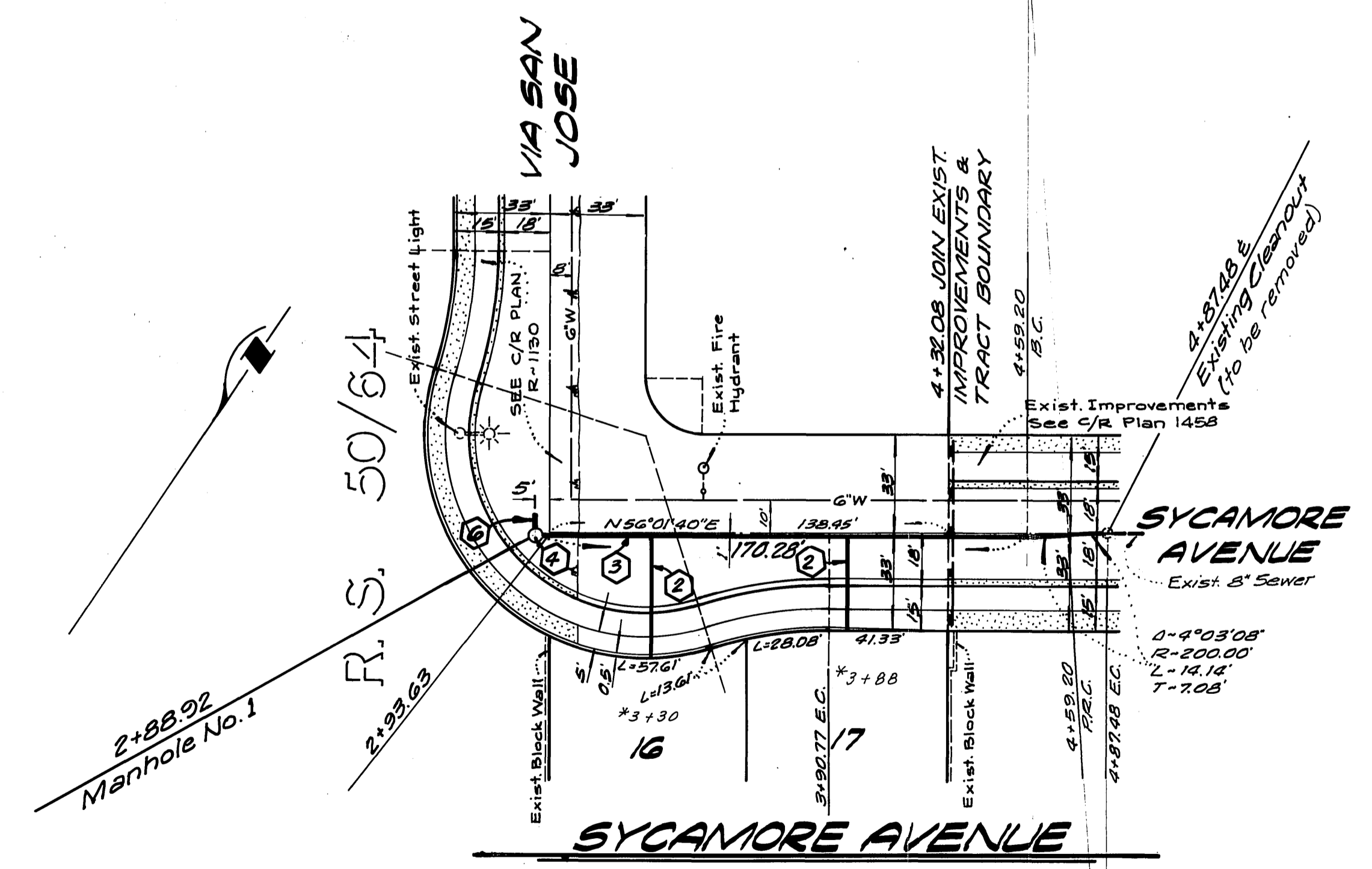
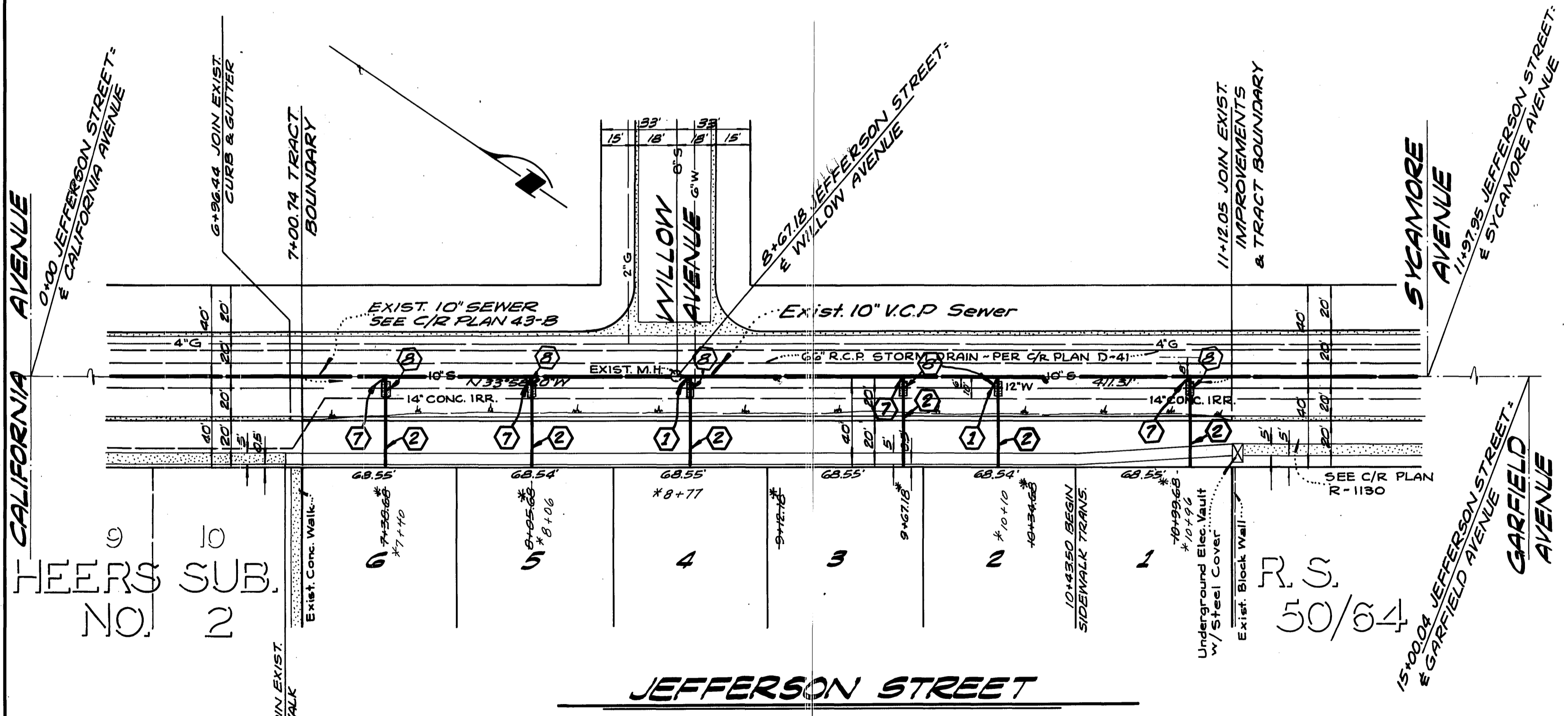
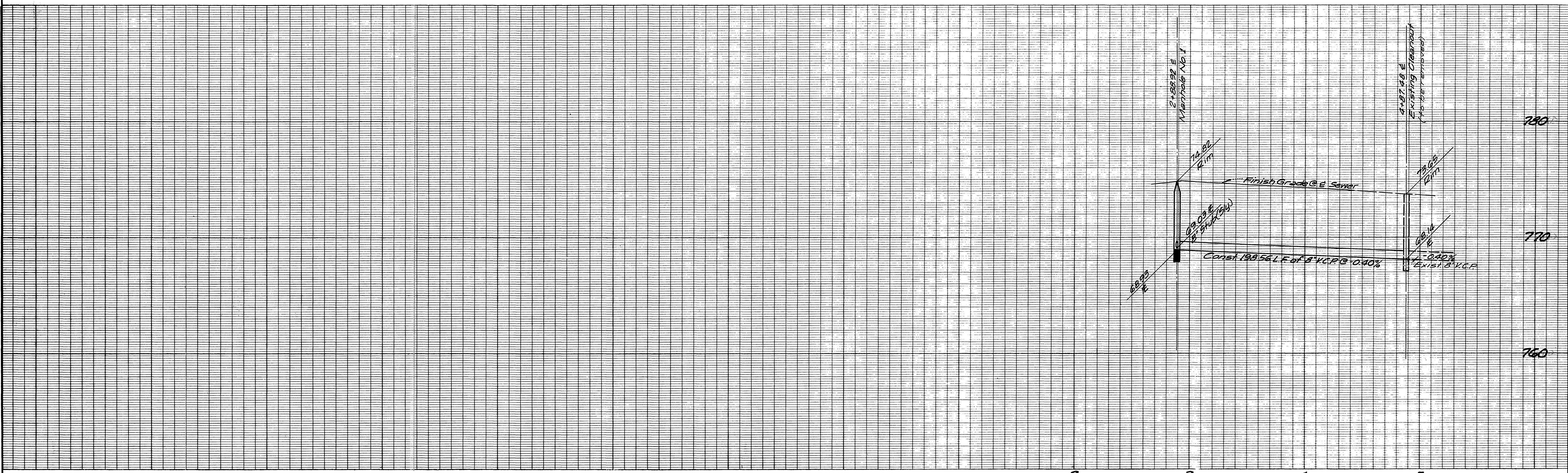
The private engineer signing these plans is responsible for the accuracy and acceptability of the work hereon. In the event of discrepancies arising during construction, the private engineer signing these plans shall be responsible for determining an acceptable solution and revising the plans for approval by the City.

**BENCH MARK:**

65-F - P.K. Nell and Tag 3' NWly. of E.C.R. @ Northernly Corner of Magnolia Avenue and Jefferson Street. C.R.F.B. 759/71  
Elevation 792.336

\*AS BUILT 8-78 KPT

<b>KICAK WAINSCOTT &amp; ASSOCIATES</b> CIVIL ENGINEERS GRAND TERRACE, CALIFORNIA		CITY OF RIVERSIDE, CALIFORNIA DEPARTMENT OF PUBLIC WORKS		<b>SEWER PLAN AND PROFILE</b> TRACT NO. 887! INDEX SHEET		PROJECT NO. S-1088 SHEET 1 OF 3 FILE NO. 004-03-B	
APPROVED BY: <i>L.A. Waincott</i> DATE 1-4-77 R.C.E. 1G096		APPROVED BY: <i>[Signature]</i> DATE 4-26 DIRECTOR OF PUBLIC WORKS		SCALE: AS SHOWN		INDEXED R.R.	
Approved by: <i>Wesley Taylor</i> 3-24-77 Chief Utilities Engineer, Water		DESIGNED BY: P.H. DRAWN BY: P.H. CHECKED BY: B.M.		DATE: 4-26		W.O. 004-03 FOR MORGAN DEVELOPMENT CO. F.B.	



**NOTE:**  
See Sheet No. 1 for General and Construction Notes.

9  
HEERS SUB.  
NO. 2

R.S.  
50/64

\* Denotes Station for existing Wye location. Stations were calculated from information provided by the City of Riverside Public Works Department.

Approved by:  
*Wally Hylan* 3-24-77  
Chief Utilities Engineer, Water Dept

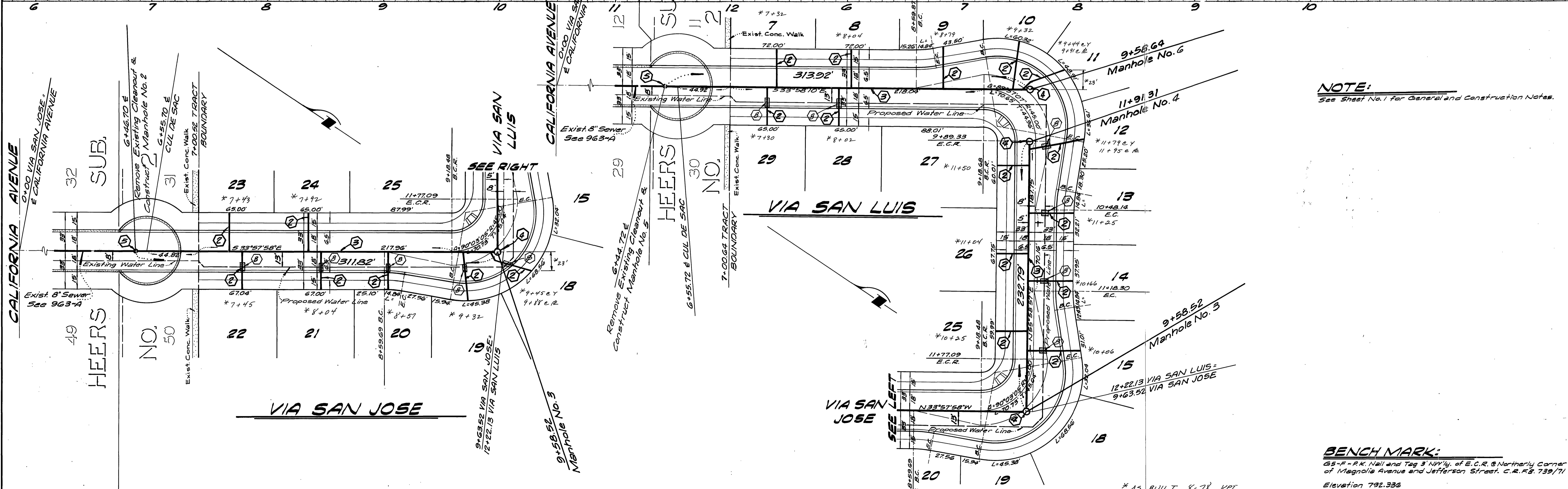
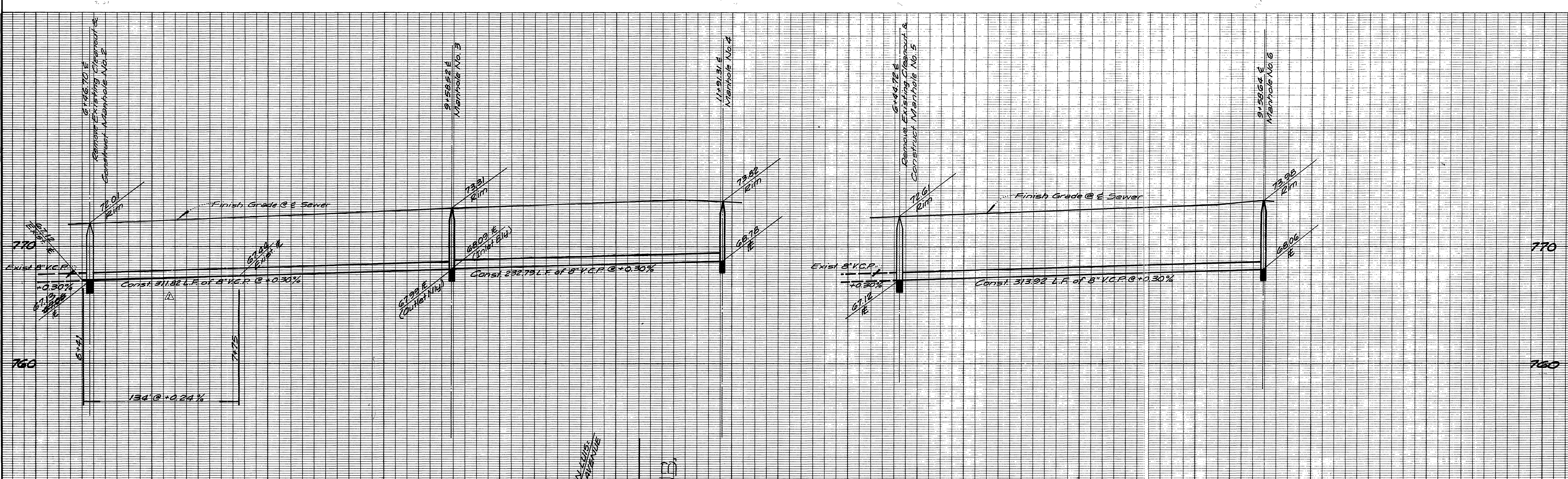
**KICAK WAINSCOTT & ASSOCIATES**  
CIVIL ENGINEERS  
GRAND TERRACE, CALIFORNIA  
APPROVED BY: *L.A. Waincott* DATE 1-4-77  
R.C.E. 16056  
W.O. 004-03 FOR MORGAN DEVELOPMENT CO. F.R.

MARK REVISIONS APPR. DATE  
DESIGNED BY: P.H. DRAWN BY: P.H. CHECKED BY: BDM

**CITY OF RIVERSIDE, CALIFORNIA**  
DEPARTMENT OF PUBLIC WORKS  
APPROVED BY: *[Signature]* BY DATE: 4-26-77  
OFFICE ENGINEER: *[Signature]*  
PARK DEPARTMENT  
TRAFFIC DIVISION  
ASSISTANT CITY ENG. *[Signature]*

**SEWER PLAN AND PROFILE**  
**TRACT NO. 8871**  
**JEFFERSON STREET**  
**SYCAMORE AVENUE**  
PROJECT NO. S-1088  
SHEET 2 OF 3  
FILE NO. 004-05-13  
SCALE: HORIZ. 1"=40' VERT. 1"=4'

**BENCH MARK:**  
65-R - R.K. Nail and Tag 3' NWly. of E.C.R. 6 Northwly. Corner of Magnolia Avenue and Jefferson Street, C.R.F.B. 739/71.  
Elevation 792.332  
\* AS BUILT 8-78 KPT



**NOTE:**  
See Sheet No. 1 for General and Construction Notes.

**BENCH MARK:**  
65-F-P.K. Nail and Tag 3' NW 1/4 of E.C.R. @ Northernly Corner of Magnolia Avenue and Jefferson Street. C.R. #3. 7/31/71  
Elevation 792.336

Approved by: *Walter Sellen*  
Chief Utilities Engineer, Water Date 3-24-77

**KICAK WAINSCOTT & ASSOCIATES**  
CIVIL ENGINEERS  
GRAND TERRACE, CALIFORNIA  
APPROVED BY: *LA Waincott* DATE 1-4-77  
R.C.E. 16056

DESIGNED BY: P.H. DRAWN BY: P.H. CHECKED BY: B.O.M.

CITY OF RIVERSIDE, CALIFORNIA  
DEPARTMENT OF PUBLIC WORKS  
APPROVED BY: *[Signature]* DATE 4-20-77  
DIRECTOR OF PUBLIC WORKS

**SEWER PLAN AND PROFILE**  
**TRACT NO. 8871**  
**VIA SAN JOSE**  
**VIA SAN LUIS**  
PROJECT NO. S-1088  
SHEET 3 OF 3  
FILE NO. 004-03-B  
SCALE: HORIZ. 1"=40' VERT. 1"=4'