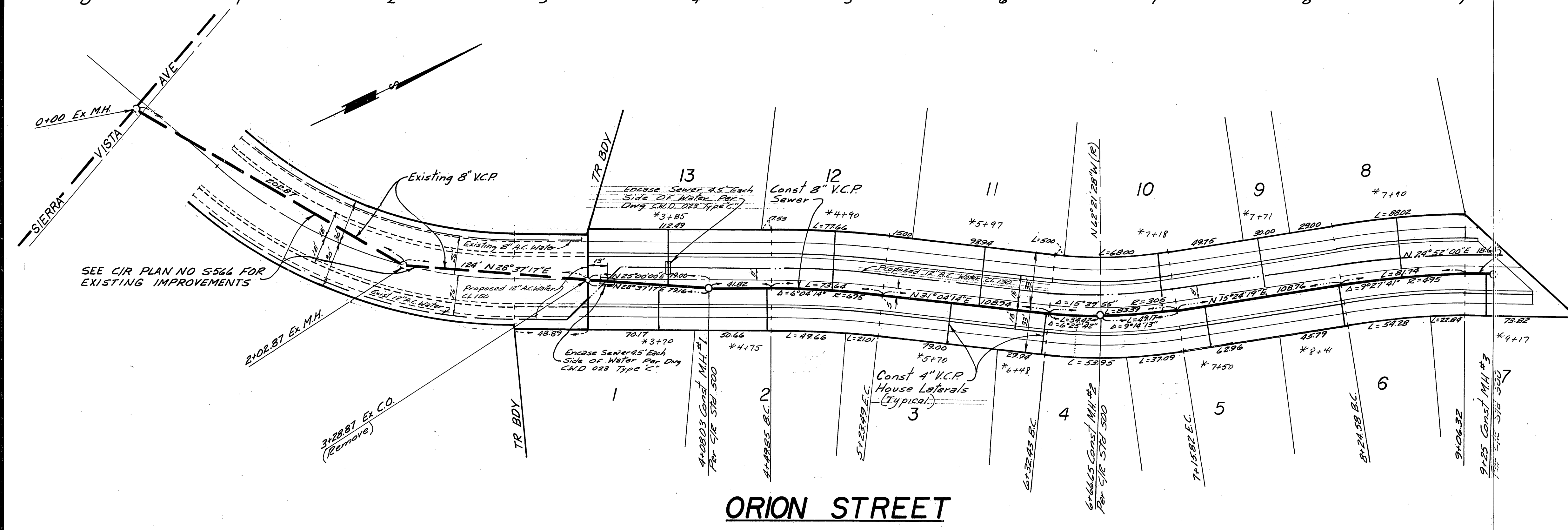


**GENERAL NOTES:**

1. It shall be the responsibility of the contractor to clear the right of way in accordance with the provisions of law as it affects each utility including irrigation lines and appurtenances and at no cost to the City.
2. Construction shall be in accordance with the City of Riverside, Department of Public Works, Standard Drawings, and the Standard Specifications for Public Works Construction, 1976 Edition.
3. Location of laterals to be determined in the field at the direction of the owner. Avoid conflict with proposed and/or existing facilities.
4. Contractor is to verify existing sewer elevation prior to construction.
5. The Sewer Contractor shall adjust manholes to final grade after paving is complete.
6. A plug shall be installed and will remain in place where the new sewer connects with the existing sewer until the new sewer is accepted by the City.
10. The private engineer signing these plans is responsible for assuring the accuracy and acceptability of the work herein. In the event of discrepancies arising during construction as a result of errors or omissions, the private engineer shall be responsible for determining an acceptable solution and revising the plans for approval by the City.



**BENCH MARK**

City B.M. F.I-A Elev = 806.587  
 Brass disc in 12" conc monument  
 SW Corner of Gramercy & Sierra  
 Vista on back of curb at the  
 NW End of sidewalk planter.

**ALBERT A. WEBB ASSOCIATES**  
 CIVIL ENGINEERS  
 RIVERSIDE, CALIFORNIA  
 APPROVED BY: *Ernest N. Webb* DATE: 12/30/76  
 R.E. No. 2876

MARK	REVISIONS	APPR.	DATE

Approved By: *Walter J. Fisher* 1-25-77  
 Chief Utility Engineer - Water Date  
 CITY OF RIVERSIDE, CALIFORNIA  
 PUBLIC WORKS DEPARTMENT  
 APPROVED BY: *[Signature]* DATE: 1/27/77  
 PRINCIPAL ENGINEER  
 PARK DEPARTMENT  
 TRAFFIC DIVISION  
 CHIEF PUB. WKS. ENGR.

**SEWER PLAN & PROFILE**  
 TRACT NO 8557  
 ORION ST  
 SCALE: H 1"=40' V 1"=8'

ACCOUNT No. \_\_\_\_\_  
 DRAWING NUMBER  
**S-1090**  
 SHEET 1 OF 1  
 78-298-B