

**GENERAL NOTES**

1. Construction shall be in accordance with the Standard Specifications for Public Works Construction 1976 Edition, and the City of Riverside Standard Drawings.
2. It shall be the responsibility of the Contractor to clear the Right of Way in accordance with the provisions of law as it affects each utility including irrigation lines and appurtenances and at no cost to the City.
3. Pipe shall be bedded per Case I, Standard Drawing No. 452, unless otherwise specified on the plans.
4. Location of wyes and laterals to be determined in the field at the direction of the owner.
5. All stubs and laterals to be constructed in accordance with Standard Drawing No. 562 stubs shall be plugged and capped.
6. Manhole frames and covers to be set as noted in profiles by sewer Contractor after final paving of streets.
7. Laterals are to be 4" V.C.P. and extended to property line.
8. Prior to construction the sewer Contractor is to expose the existing sewer and contact the Engineer for verification of existing location and elevation.
9. Plugs shall be installed and will remain in place where the new sewer connects with the existing sewer until such time as the new sewer is accepted by the City.

**NOTE:**

The private engineer signing these plans is responsible for assuring the accuracy and acceptability of the work shown. In the event of discrepancies arising during construction as a result of errors or omissions, the private engineer shall be responsible for determining an acceptable solution and revising the plans for approval by the City.

**NOTICE TO CONTRACTOR**

The existence and location of underground utility pipes or structures shown on these plans are obtained by a search of the available records. To the best of our knowledge there are no existing utilities except as shown on these plans.

The Contractor is required to take due precautionary measures to protect the utility lines shown and any other lines not of record or not shown on these plans.

**AS BUILT**  
10-24-79  
BSP

**BENCH MARK:** Elev 1136.542  
C/R B.M. No. G-7-C, 1/2" nail in curb return SE corner Chicago and Alessandro.

APPROVED BY:  
*Wesley Sellen*  
CHIEF UTILITIES ENGINEER, WATER  
DATE: 11-10-76

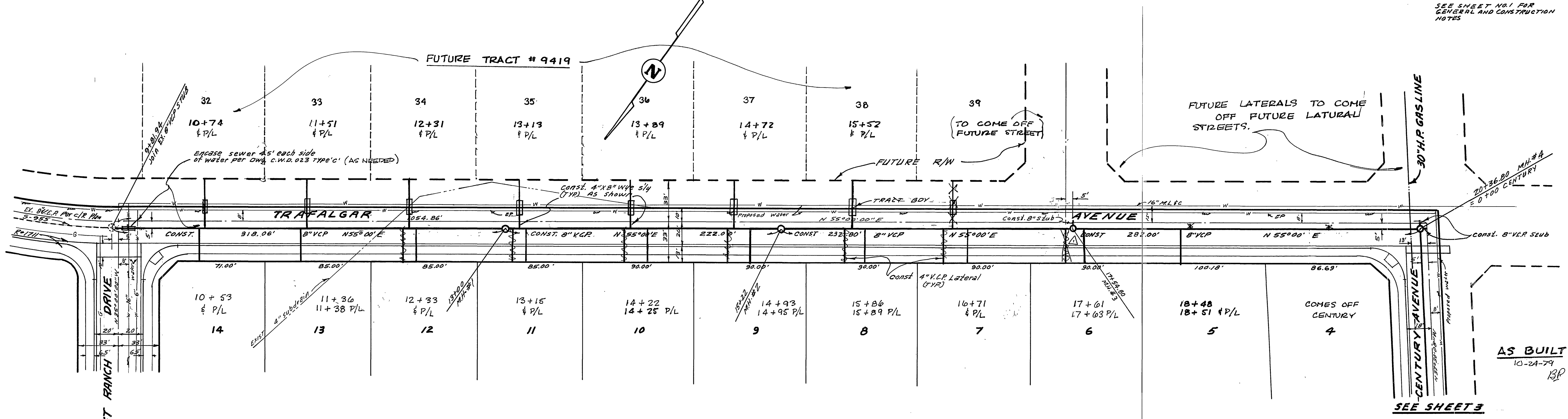
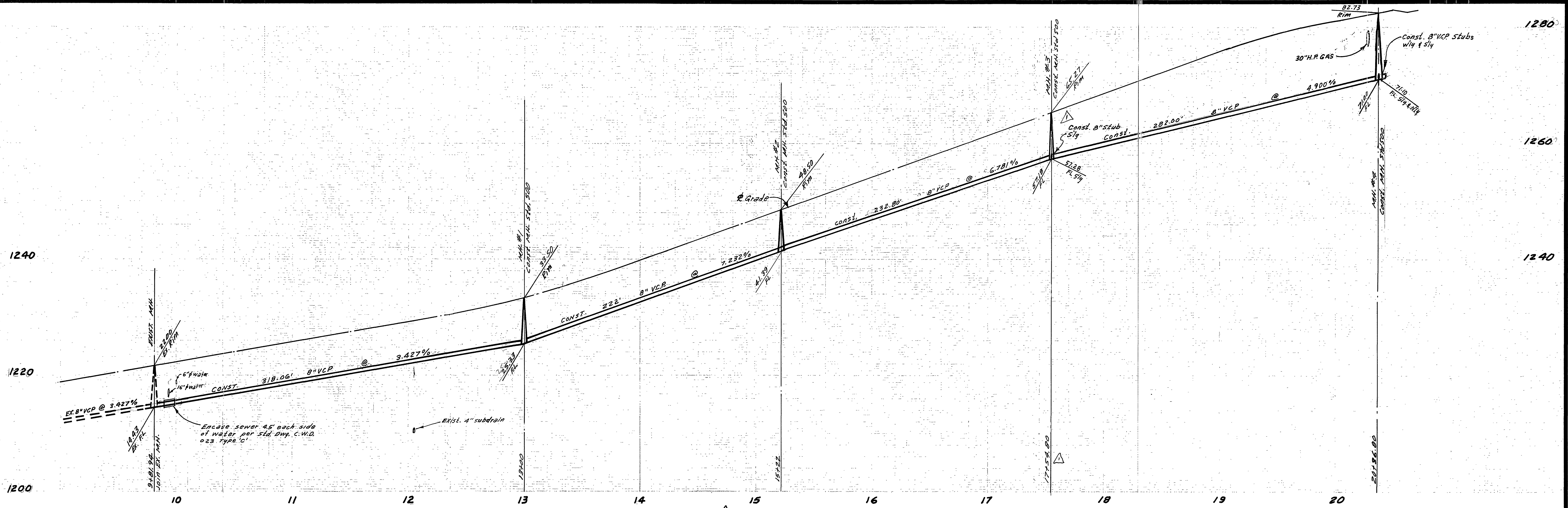
ALBERT A. WEBB ASSOCIATES  
CIVIL ENGINEERS  
RIVERSIDE, CALIFORNIA  
APPROVED BY: *L.A. Harriott* DATE: 7-29-76  
R.E. No. 16056  
W.O. 77-21 FOR: SAM HARMATZ F.B. 1022

DESIGNED BY: BEL DRAWN BY: BEL CHECKED BY: [Signature]

CITY OF RIVERSIDE, CALIFORNIA  
PUBLIC WORKS DEPARTMENT  
APPROVED BY: [Signature]  
PRINCIPAL ENGINEER  
PARK DEPARTMENT  
TRAFFIC DIVISION  
DATE: 4/21/77

**SEWER PLAN AND PROFILE**  
**INDEX**  
TRACT 9275  
SCALE: NONE

ACCOUNT No. INDEXED 7A.  
DRAWING NUMBER: 5-1092  
SHEET 1 OF 4  
77-21-8



SEE SHEET NO. 1 FOR GENERAL AND CONSTRUCTION NOTES

**NOTE:**  
 Prior to starting work in 2002  
 a 30" H.P. Gas Line, Notify Southern  
 California Gas Co. Beaumont Station  
 File No. 714-845-2617.

**BENCH MARK:** Elev. 1156.542  
 C/P B.M. No. G-7-C R.L. nail in curb return S.E.  
 corner Chicago and Alameda.

APPROVED BY:  
*Wally Joffe*  
 CHIEF UTILITIES ENGINEER, WATER  
 DATE: 11-10-76

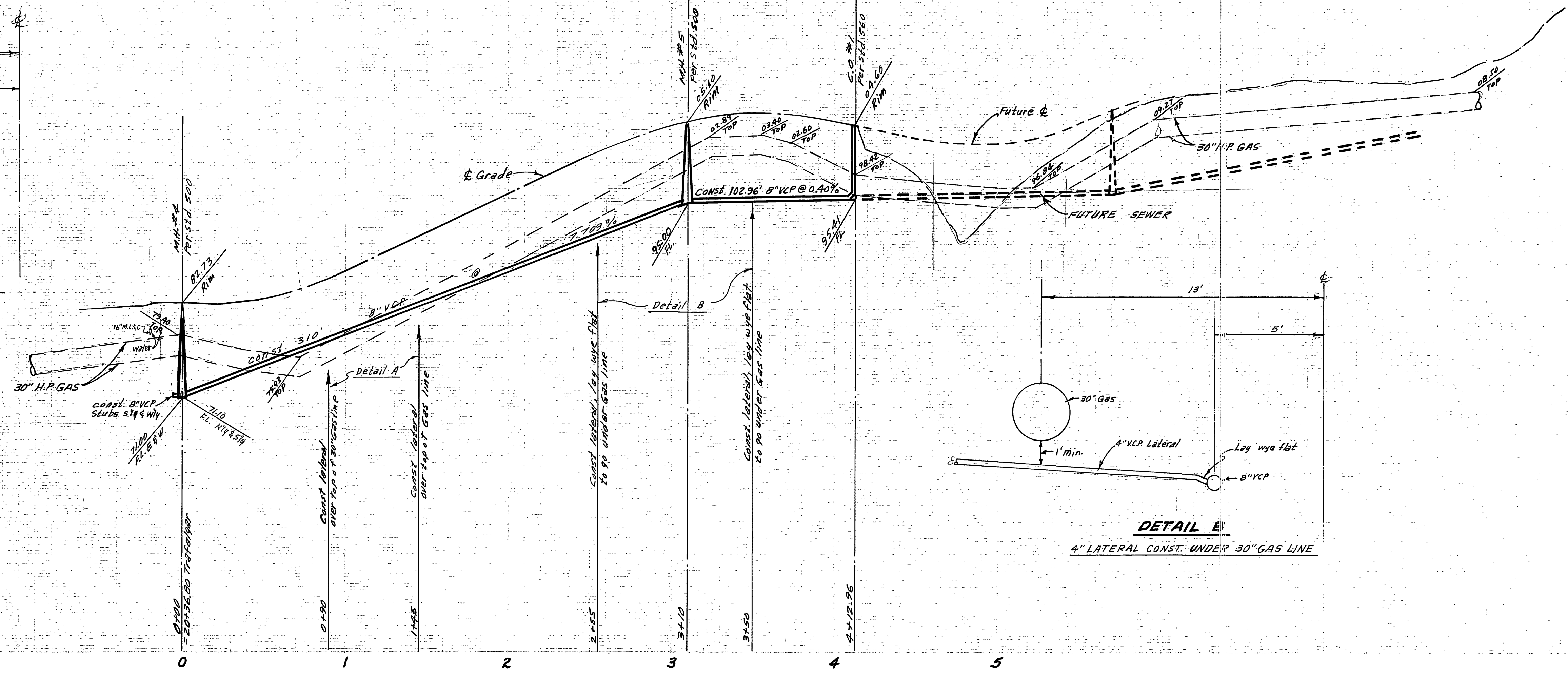
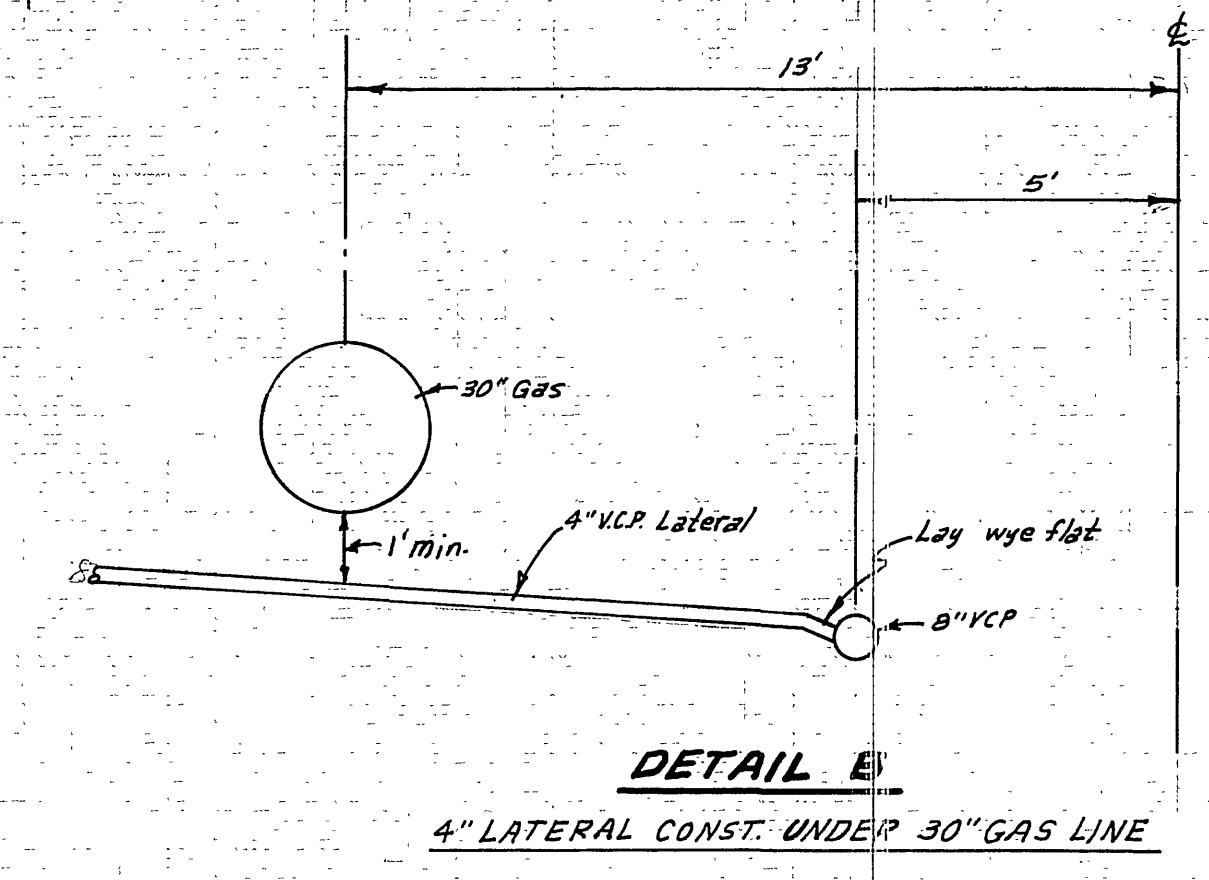
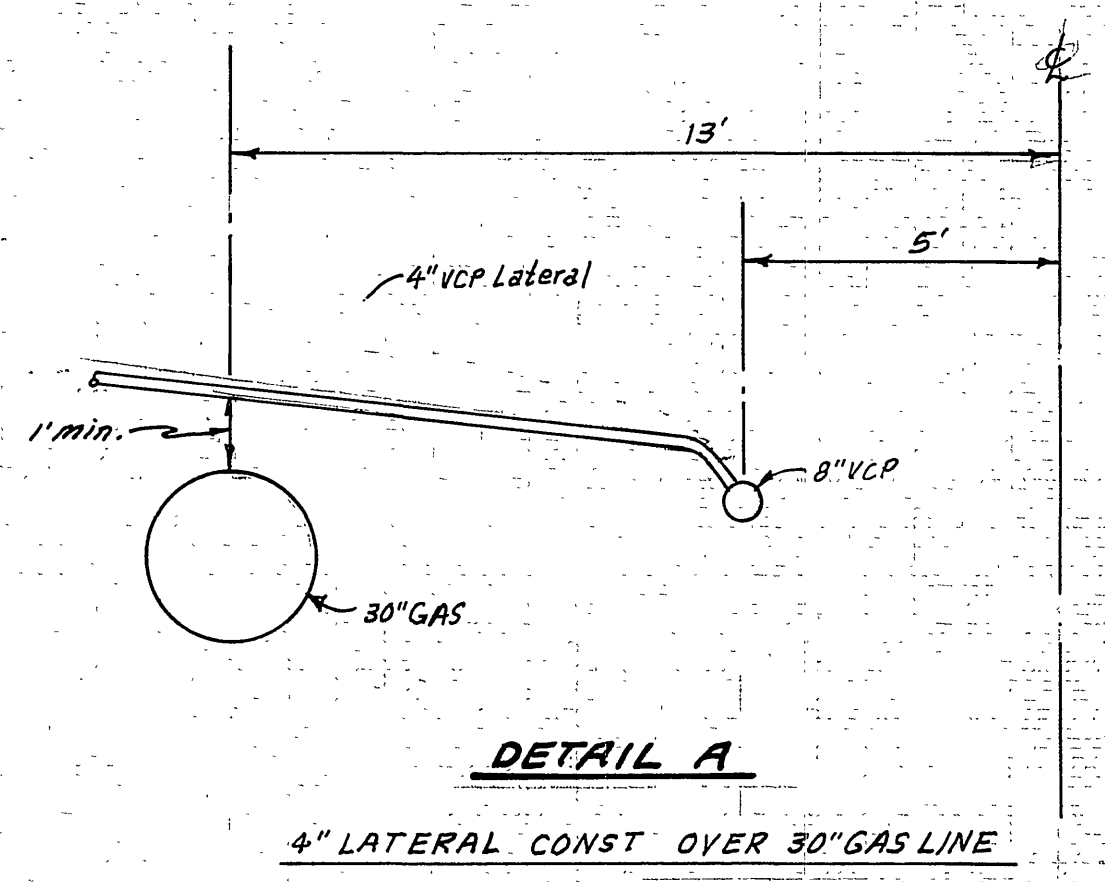
ALBERT A. WEBB ASSOCIATES  
 CIVIL ENGINEERS  
 RIVERSIDE, CALIFORNIA  
 APPROVED BY: *L.A. Nannett* DATE: 7-29-76  
 R.E. No. 16056  
 W.D. 77-21 FOR SAM HARMATZ F.B. 1022

MARK	REVISIONS	APP. DATE
Δ	Revised location of M.I.#3 E/W	9/27/77

CITY OF RIVERSIDE, CALIFORNIA  
 PUBLIC WORKS DEPARTMENT  
 APPROVED BY: *William D. Anderson*  
 PRINCIPAL ENGINEER  
 PARK DEPARTMENT  
 TRAFFIC DIVISION  
 CHIEF PUB. WKS. ENGR.  
 DATE: 4/1/77

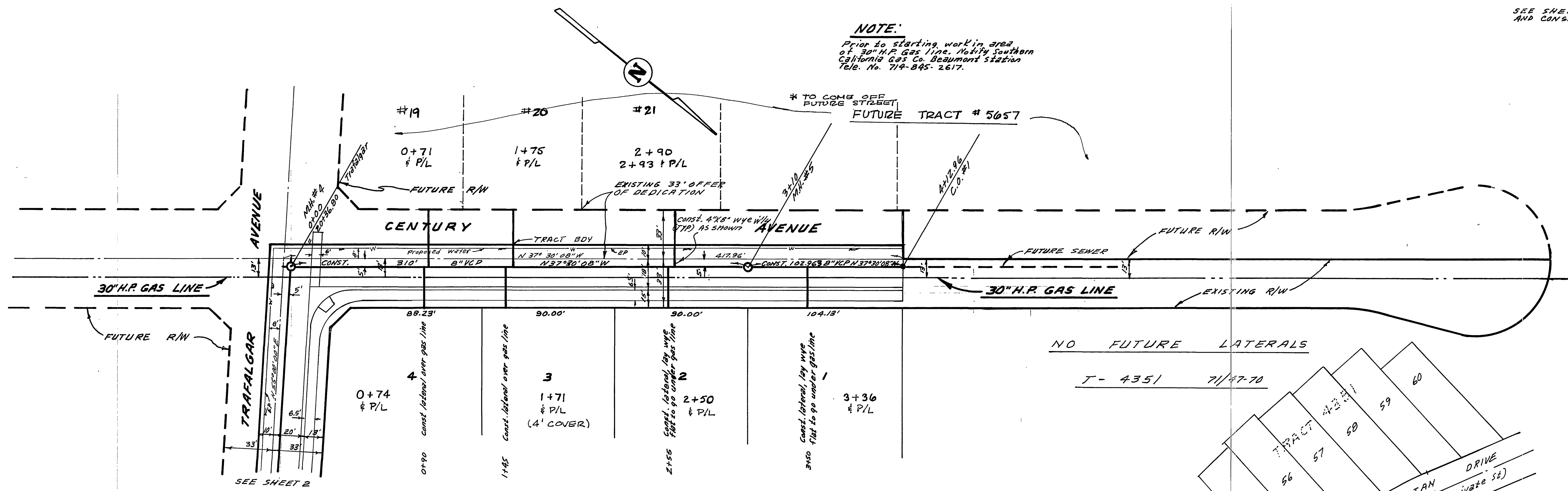
SEWER PLAN AND PROFILE  
**TRAFALGAR AVENUE**  
 TRACT 9275  
 SCALE: 1" = 40' Horiz. - 1" = 8' Vert.

ACCOUNT No.  
 DRAWING NUMBER  
**5-1092**  
 SHEET 2 OF 4  
 77-21-B

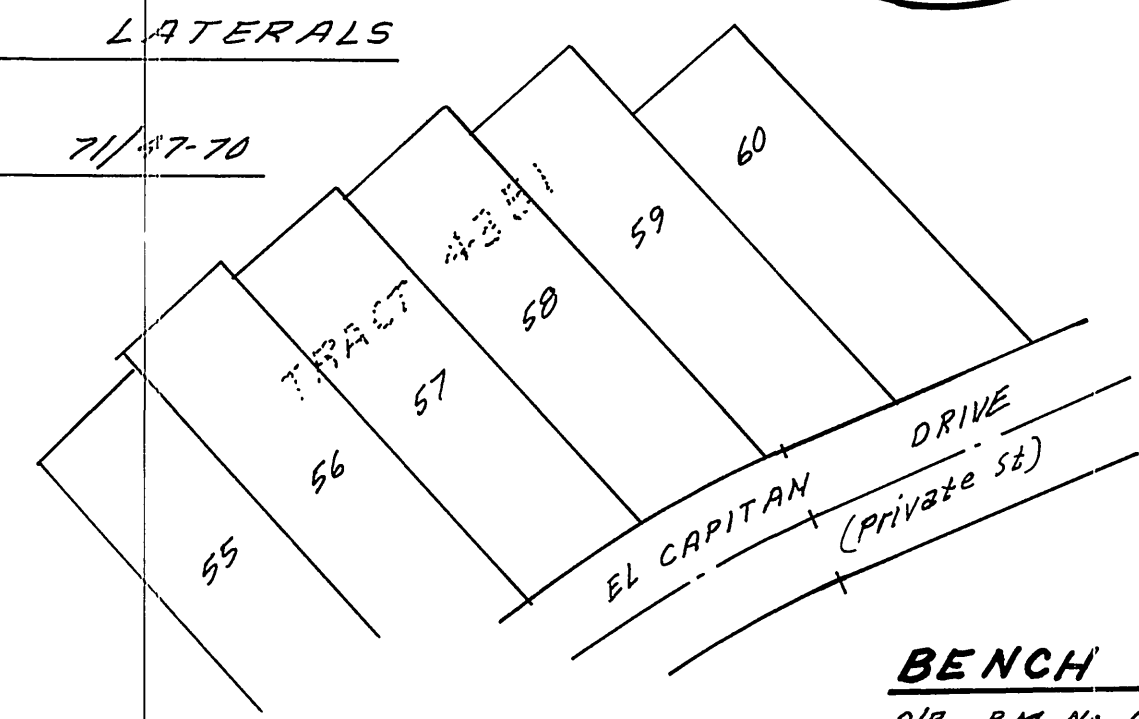


**NOTE:**  
Prior to starting work in area of 30" H.P. Gas Line, Notify Southern California Gas Co. Beaumont Station Tel. No. 774-845-2617.

SEE SHEET NO. 1 FOR GENERAL AND CONSTRUCTION NOTES.



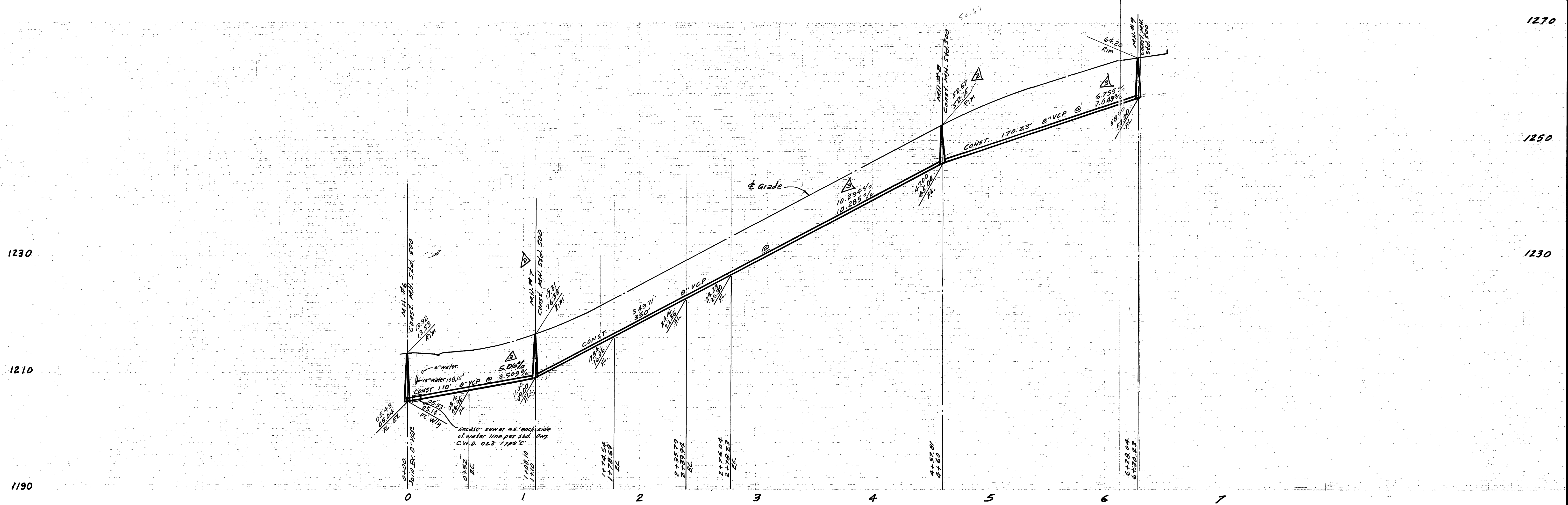
"AS BUILT"  
10-24-79  
BP



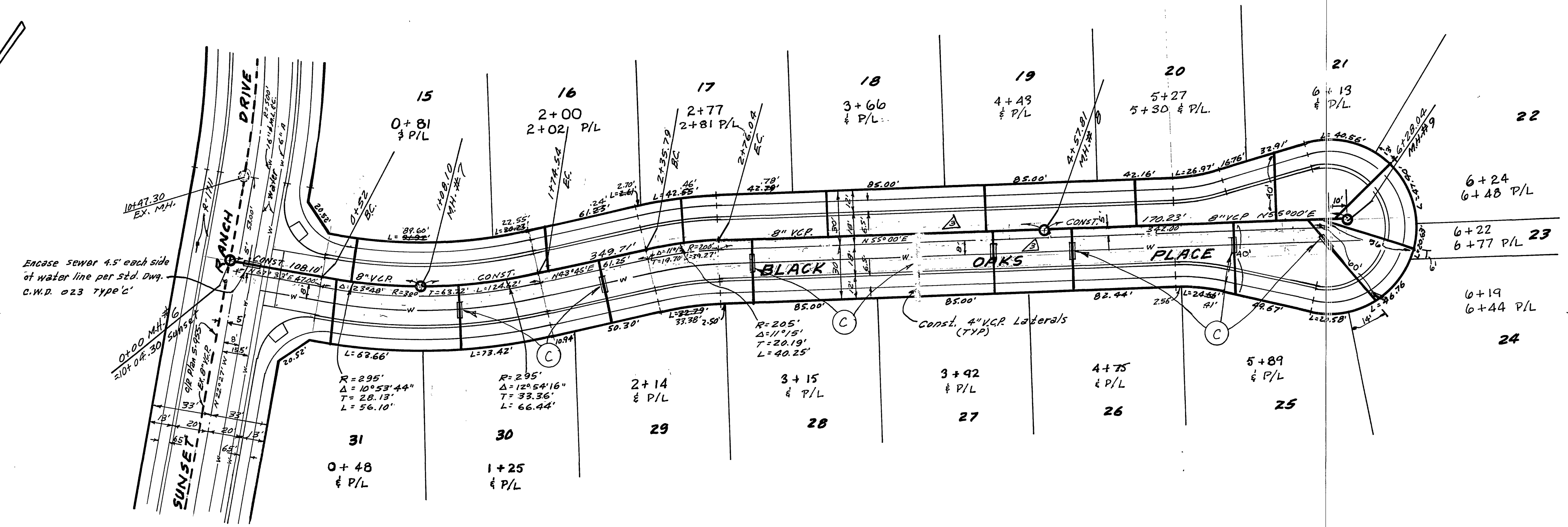
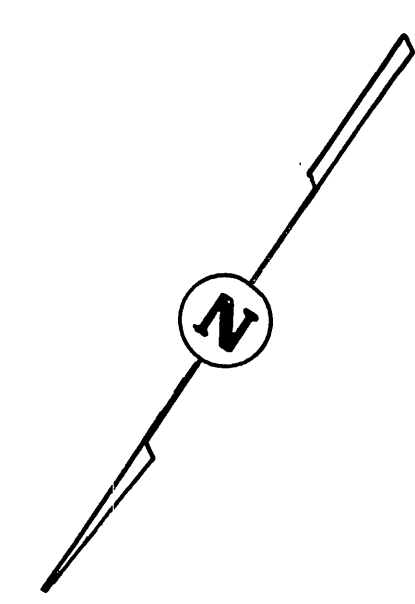
**BENCH MARK:** E/EX 1136.542  
C/O B.M. No. G-7-C. PK. nail in curb return SE. corner Chicago and Alessandro.

APPROVED BY <i>William V. Somers</i> SOUTHERN CALIF. GAS COMPANY DATE 10-9-76	ALBERT A. WEBB ASSOCIATES CIVIL ENGINEERS RIVERSIDE, CALIFORNIA APPROVED BY <i>L.D. Hunsick</i> DATE 7-29-76 R.E. No. 16056	CITY OF RIVERSIDE, CALIFORNIA PUBLIC WORKS DEPARTMENT APPROVED BY <i>W.S. D. ...</i> PRINCIPAL ENGINEER PARK DEPARTMENT TRAFFIC DIVISION CHIEF PUB. WKS. ENGR. DATE 4/21/77	SEWER PLAN AND PROFILE CENTURY AVENUE TRACT NO. 9275 SCALE: 1" = 40' Horiz. - 1" = 8' Vert.	ACCOUNT No. DRAWING NUMBER 5-1092 SHEET 3 OF 4 77-21-B
--	---	--	--	--





SEE SHEET NO. 1 FOR GENERAL AND CONSTRUCTION NOTES.



(C) Encase sewer lateral with type "c" conc. encasement 4.5' each side of water main crossing 25' per Public Utilities DWG. C.W.D. 023. (If sewer laterals cross over water main, type "B" encasement is required.)

AS BUILT  
10-24-79  
BP

**BENCH MARK:** Elev. 1196.542  
C/P B.M. No. G-7-C, 1/4" nail in curb return S.E. corner Chicago and Alessandro.

Revised location, water & sewer 12-30-77 ENR  
APPROVED BY: *Walter J. Hoffer*  
CHIEF UTILITIES ENGINEER, WATER  
DATE: 11-10-76

ALBERT A. WEBB ASSOCIATES  
CIVIL ENGINEERS  
RIVERSIDE, CALIFORNIA  
APPROVED BY: *L.A. Harnisch* DATE: 7-29-76  
R.E. No. 16056

CITY OF RIVERSIDE, CALIFORNIA  
PUBLIC WORKS DEPARTMENT  
APPROVED BY: *William D. Barber*  
DIRECTOR OF PUBLIC WORKS  
DATE: 4/21/77

**SEWER PLAN AND PROFILE**  
**BLACK OAKS PLACE**  
**TRACT 9275**

ACCOUNT No. 5-1092  
DRAWING NUMBER  
SHEET 4 OF 4  
DATE: 4/21/77  
SCALE: 1" = 40' Horiz. 1" = 8' Vert.