

PROFILE
SCALE: HORIZ. 1"=40'
VERT. 1"=4'

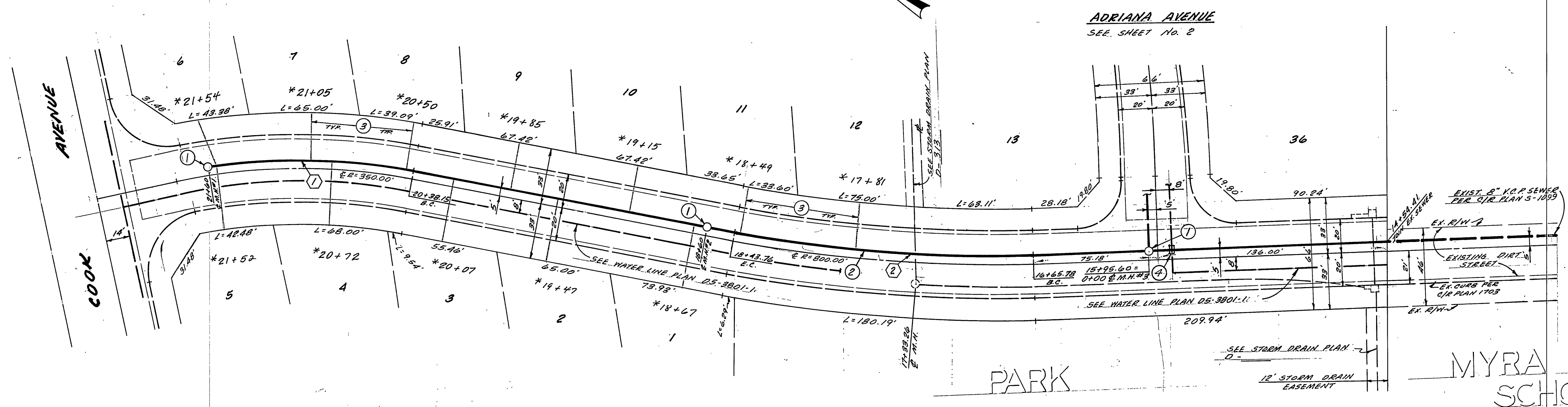
PLAN
SCALE: 1"=40'

CONSTRUCTION NOTES

- ① - CONST. SEWER MANHOLE PER CITY OF RIVERSIDE STD. DWG. NO. 500.
- ② - CONST. 8" V.C.P. SEWER MAIN.
- ③ - CONST. 4" SEWER LATERAL TO R.
- ④ - ENCASE SEWER MAIN 45" EACH SIDE OF WATER MAIN CROSSING WITH TYPE "C" CONCRETE ENCASING PER PUBLIC UTILITY DWG. CND-023.

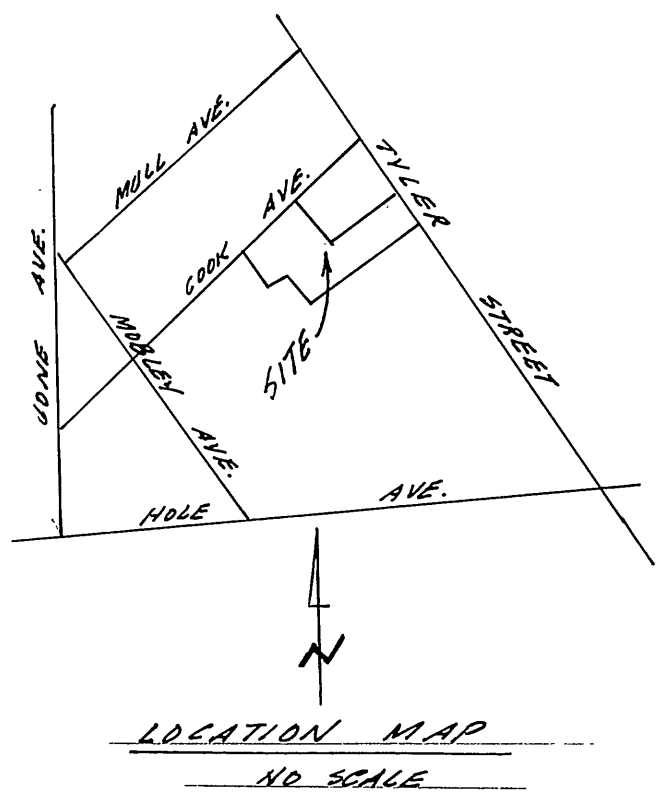
SEWER NOTES

- 1. THE CONTRACTOR SHALL BE IN ACCORDANCE WITH THE CITY OF RIVERSIDE, DEPT. OF PUBLIC WORKS, STANDARD DRAWINGS, AND THE STANDARD SPECIFICATIONS FOR PUBLIC WORKS CONSTRUCTION, 1976 EDITION.
- 2. LOCATION OF LATERALS TO BE DETERMINED IN THE FIELD AT THE DIRECTION OF THE OWNER AND CORRELATED WITH PROPOSED AND/OR EXISTING FACILITIES.
- 3. CONTRACTOR IS TO VERIFY EXISTING SEWER ELEVATION PRIOR TO CONSTRUCTION.
- 4. THE SEWER CONTRACTOR SHALL ADJUST MANHOLES TO FINAL GRADE AFTER PAVING IS COMPLETED.
- 5. A PLUG SHALL BE INSTALLED AND WILL REMAIN IN PLACE WHERE THE NEW SEWER CONNECTS WITH THE EXISTING SEWER UNTIL THE NEW SEWER IS ACCEPTED BY THE CITY.



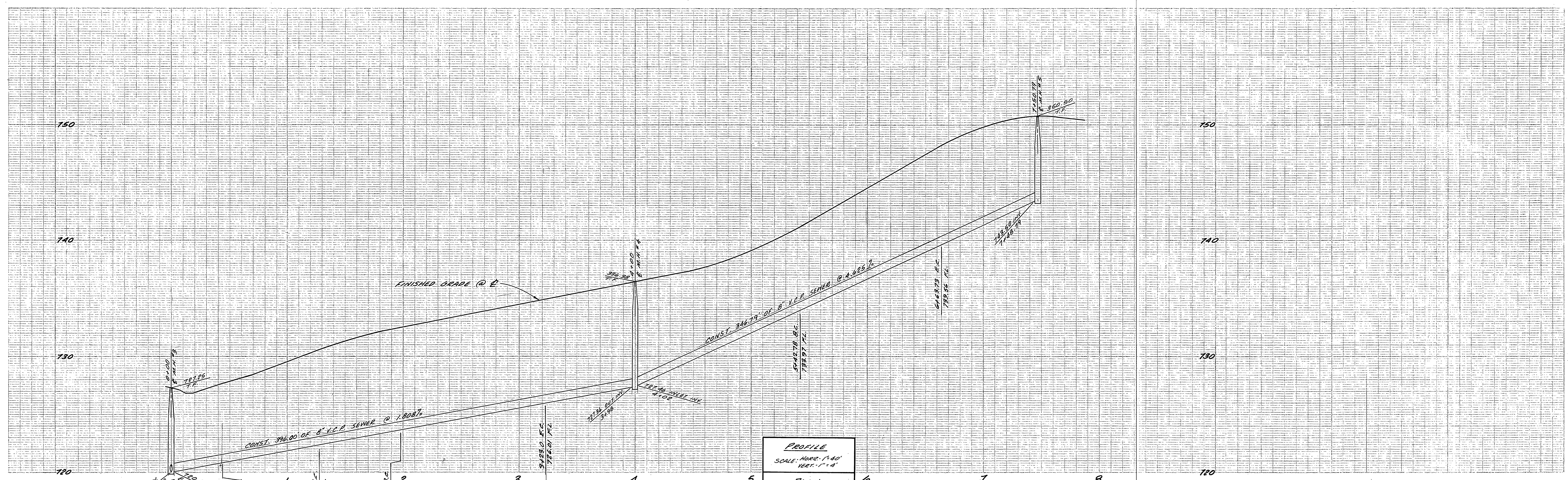
CURVE DATA

STATION	Δ	R	T	L
1	19°39'58"	355.00	61.53'	121.05'
2	10°49'37"	795.00	89.96'	177.98'



THE PRIVATE ENGINEER SIGNING THESE PLANS IS RESPONSIBLE FOR ASSURING THE ACCURACY AND ACCEPTABILITY OF THE WORK HEREON. IN THE EVENT OF DISCREPANCIES ARISING DURING CONSTRUCTION AS A RESULT OF ERRORS OR OMISSIONS, THE PRIVATE ENGINEER SHALL BE RESPONSIBLE FOR DETERMINING AN ACCEPTABLE SOLUTION AND REVISING THE PLANS FOR APPROVAL BY THE CITY.

CITY OF RIVERSIDE DOMESTIC SYSTEM APPROVED BY: <i>Walter J. Taylor</i> DATE: 5-17-77 CONSULTING ENGINEER	BENCH MARK FD. BRASS DISC, STAMPED FS-A GAPPED @ INTERSECTION OF WELLS AVE. & TYLER ST. I.B. 735/12 FS-A ELEV. 749.491	C.E.L.S. Corporation 4570 Campus Drive, Suite 3 Newport Beach, California 92660 APPROVED BY: <i>Frank R. Knapp</i> DATE: 2/20/70 R.E. No. 21926	CITY OF RIVERSIDE, CALIFORNIA PUBLIC WORKS DEPARTMENT		TRACT NO. 7689 SEWER PLAN MEREDITH DRIVE	ACCOUNT NO. IN 92660 P.R. DRAWING NUMBER 5-1098 SHEET 1 OF 2
			APPROVED BY: <i>Walter J. Taylor</i> DATE: 5-17-77 PRINCIPAL ENGINEER PARK DEPARTMENT TRAFFIC DIVISION CHIEF PUB. WKS. ENGR.	APPROVED BY: <i>Walter J. Taylor</i> DATE: 5-17-77 DIRECTOR OF PUBLIC WORKS		
W.O. FOR:	F.B. DESIGNED BY:	MARK REVISIONS:	APPR. DATE:	CHECKED BY:	DATE: 5/2/77	



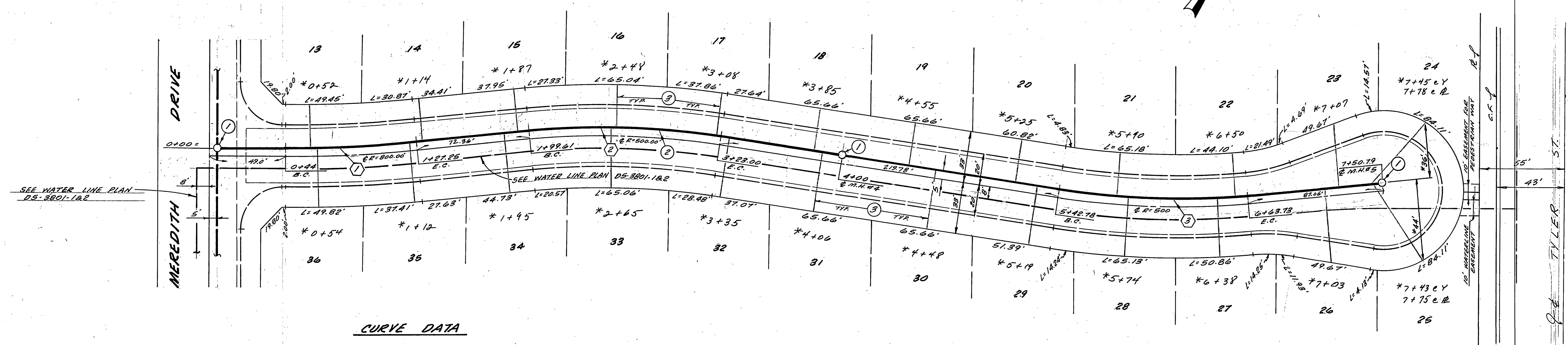
PROFILE
SCALE: HORIZ. 1"=40'
VERT. 1"=4'

PLAN
SCALE: 1"=40'

CONSTRUCTION NOTES

- ① - CONST. SEWER MANHOLE PER CITY OF RIVERSIDE STD. DWG. NO. 500.
- ② - CONST. 8" R.C.P. SEWER MAIN.
- ③ - CONST. 4" SEWER LATERAL TO R.

NOTE: SEE SEWER NOTES ON SHEET NO. 1 OF 2.



CURVE DATA

#	Δ	R	T	L
1	6°00'00"	775.00'	41.66'	83.25'
2	14°00'00"	505.00'	67.01'	123.39'
3	14°00'00"	485.00'	60.70'	120.95'

ADRIANA AVENUE

<p>CITY OF RIVERSIDE DOMESTIC SYSTEM</p> <p>APPROVED BY <i>Wesley Taylor</i> 5-9-77 CHIEF SANITATION ENGINEER, DATE WATER</p>	<p>BENCH MARK</p> <p>FD BRASS DISC, STAMPED F3-A CAPPED @ INTERSECTION OF WELLS AVE. & TYLER ST. F.B. 735/12 F3-A ELEK. 749.491</p>	<p>C.E.L.S. Corporation 4570 Campus Drive, Suite 3 Newport Beach, California 92660</p> <p>APPROVED BY <i>Frank Blomquist</i> DATE 7/10/77 R.E. No. 21926</p>	<p>CITY OF RIVERSIDE, CALIFORNIA PUBLIC WORKS DEPARTMENT</p> <p>APPROVED BY <i>Wesley Taylor</i> DATE 8/2/77 DIRECTOR OF PUBLIC WORKS</p>	<p>TRACT NO. 7689 SEWER PLAN ADRIANA AVENUE</p>	<p>ACCOUNT NO. DRAWING NUMBER 5-1098 SHEET 2 OF 2</p>
---	--	--	---	---	--