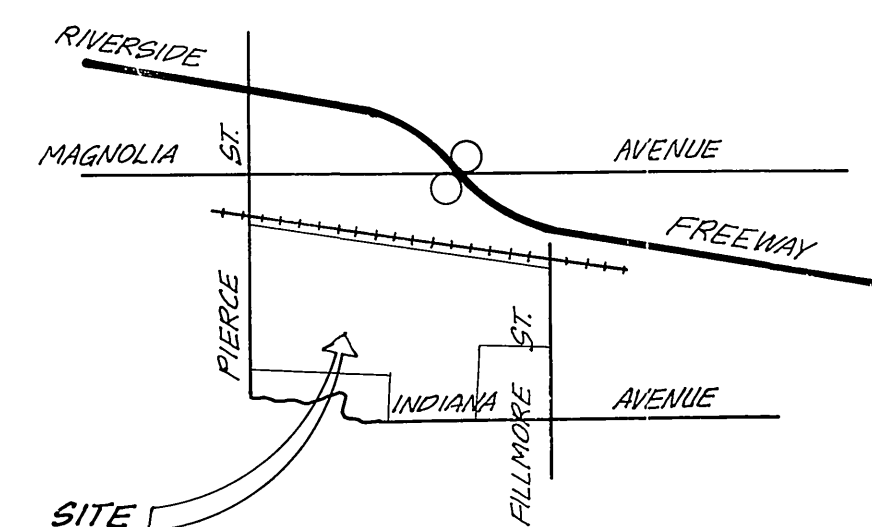


GENERAL NOTES:

- CONSTRUCTION SHALL BE IN ACCORDANCE WITH STANDARD SPECIFICATIONS FOR PUBLIC WORKS CONSTRUCTION, 1976 EDITION, AND CITY OF RIVERSIDE STD. DWGS.
- IT SHALL BE THE RESPONSIBILITY OF THE CONTRACTOR TO CLEAR THE RIGHT OF WAY in accordance with the provisions of law as it affects each utility including irrigation lines and appurtenances and at no cost to the City.
- LOCATION OF WYES AND LATERALS TO BE DETERMINED AT THE DIRECTION OF THE OWNER.
- MANHOLE FRAMES AND COVERS TO BE SET TO PROPOSED PAVEMENT GRADES.
- LATERALS ARE 4" AND EXTEND TO THE PROPERTY LINE.
- PRIOR TO CONSTRUCTION OF SEWER, CONTRACTOR IS TO EXPOSE EXISTING SEWER AND CONTACT ENGINEER FOR VERIFICATION OF EXISTING ELEVATION.
- THE SEWER CONTRACTOR SHALL ADJUST MANHOLES TO FINAL GRADES AFTER PAVING IS COMPLETED.
- CONTRACTOR SHALL MAINTAIN TRAFFIC IN BOTH DIRECTIONS ON PIERCE STREET AT ALL TIMES DURING CONSTRUCTION.
- A PLUG SHALL BE INSTALLED AND WILL REMAIN IN PLACE WHERE THE NEW SEWER CONNECTS WITH THE EXISTING SEWER UNTIL THE NEW SEWER IS ACCEPTED BY THE CITY.

CONSTRUCTION NOTES

- CONSTRUCT MANHOLES PER CITY OF RIVERSIDE PLAN NO. 500
- CONSTRUCT CLEANDUT PER CITY OF RIVERSIDE PLAN NO. 560



"The private engineer signing these plans is responsible for the accuracy and acceptability of the work hereon. In the event of discrepancies arising during construction the private engineer signing the plans, shall be responsible for determining an acceptable solution and revising the plans for approval by the City"

NOTICE TO CONTRACTOR:

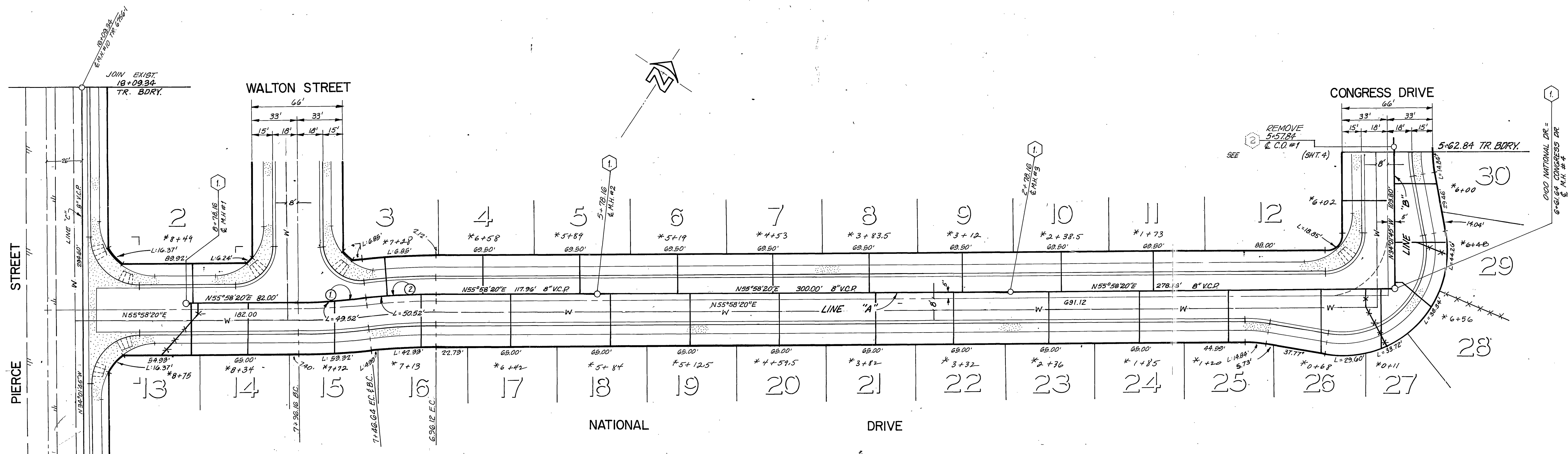
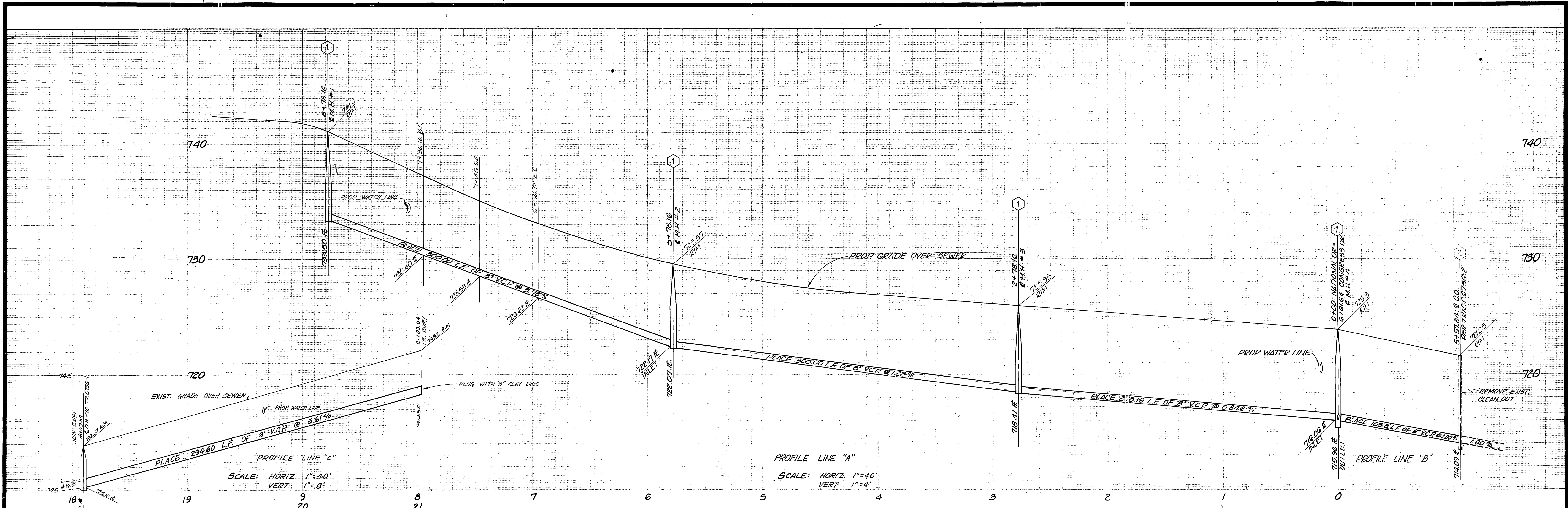
THE EXISTENCE AND LOCATION OF ANY UNDERGROUND UTILITY PIPES OR STRUCTURES SHOWN ON THESE PLANS ARE OBTAINED BY A SEARCH OF AVAILABLE RECORDS. TO THE BEST OF OUR KNOWLEDGE THERE ARE NO EXISTING UTILITIES EXCEPT AS SHOWN ON THESE PLANS. THE CONTRACTOR IS REQUIRED TO TAKE PRECAUTIONARY MEASURES TO PROTECT THE UTILITY LINES SHOWN AND OTHER LINES NOT OF RECORD OR NOT SHOWN ON THESE PLANS.

BENCHMARK

U.S.C. & G.S. B.M. K-38 1924 DISC IN HEADWALL ON N.W. CORNER FILLMORE & S.F.R.R. TRACKS ELEV. 722.010 F.B. 700/34

CITY OF RIVERSIDE, DOMESTIC SYSTEM		J. F. DAVIDSON ASSOCIATES CIVIL ENGINEERS - SURVEYORS - PLANNERS RIVERSIDE, CALIFORNIA		CITY OF RIVERSIDE, CALIFORNIA DEPARTMENT OF PUBLIC WORKS		SEWER TITLE SHEET TRACT 6756-3		INDEXED R.R. PROJECT NO. S-1102	
By: <i>Walter Taylor</i> 6-3-77 CHIEF UTILITIES ENGINEER, WATER DATE		APPROVED BY: <i>John W. Canty</i> DATE 2-8-77 R.E. No. 17550		APPROVED BY: <i>[Signature]</i> OFFICE ENGINEER DATE 6-21-77 TRAFFIC DIVISION PARK DEPARTMENT DIRECTOR OF PUBLIC WORKS		DATE 6-22-77		SHEET 1 OF 3	
W.O. FOR: F.B.		DESIGNED BY: DRAWN BY: CHECKED BY:		DATE 6-22-77		HORIZ. SCALE: 1" =		VERT. SCALE: 1" =	
								FILE NO. 5557	

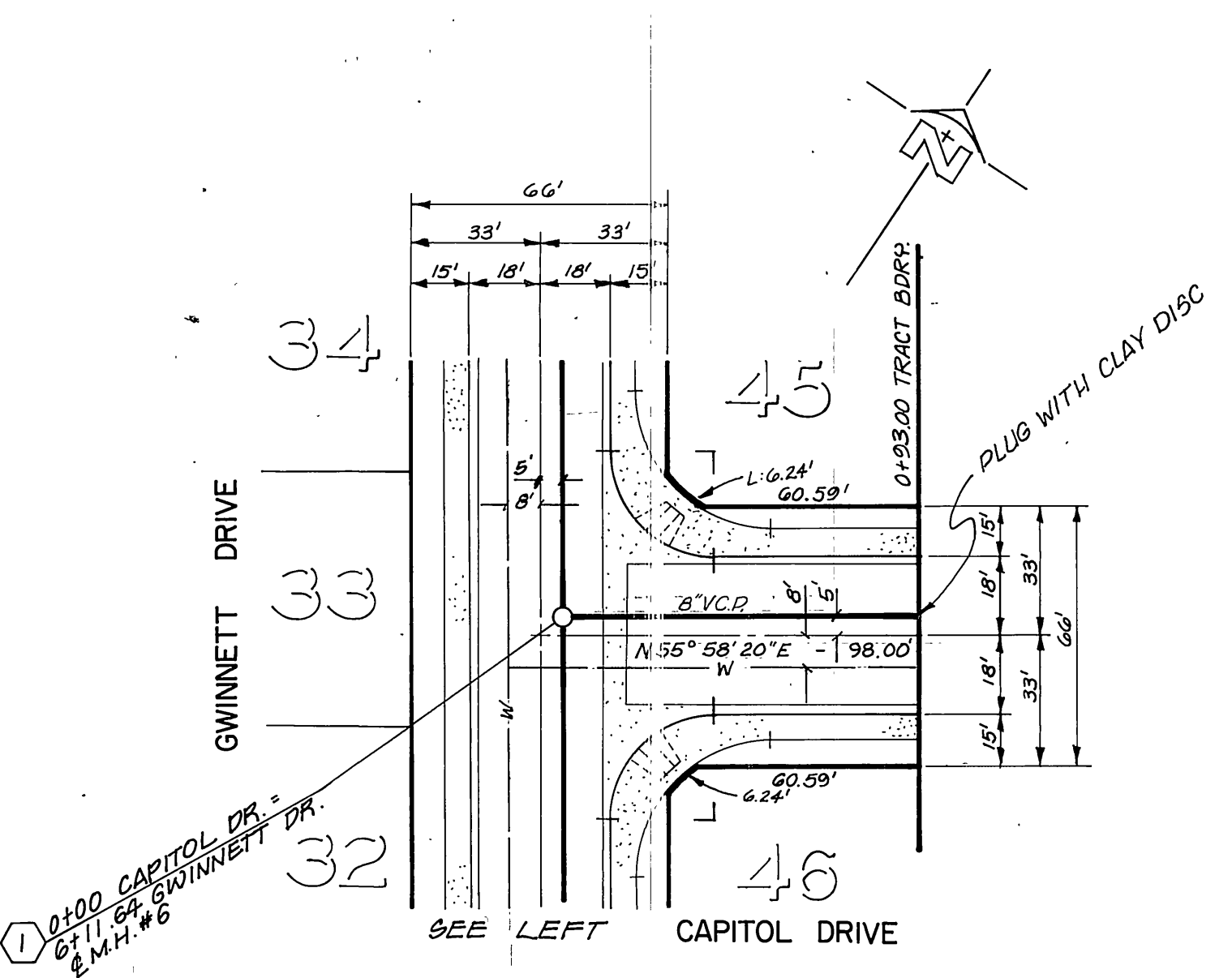
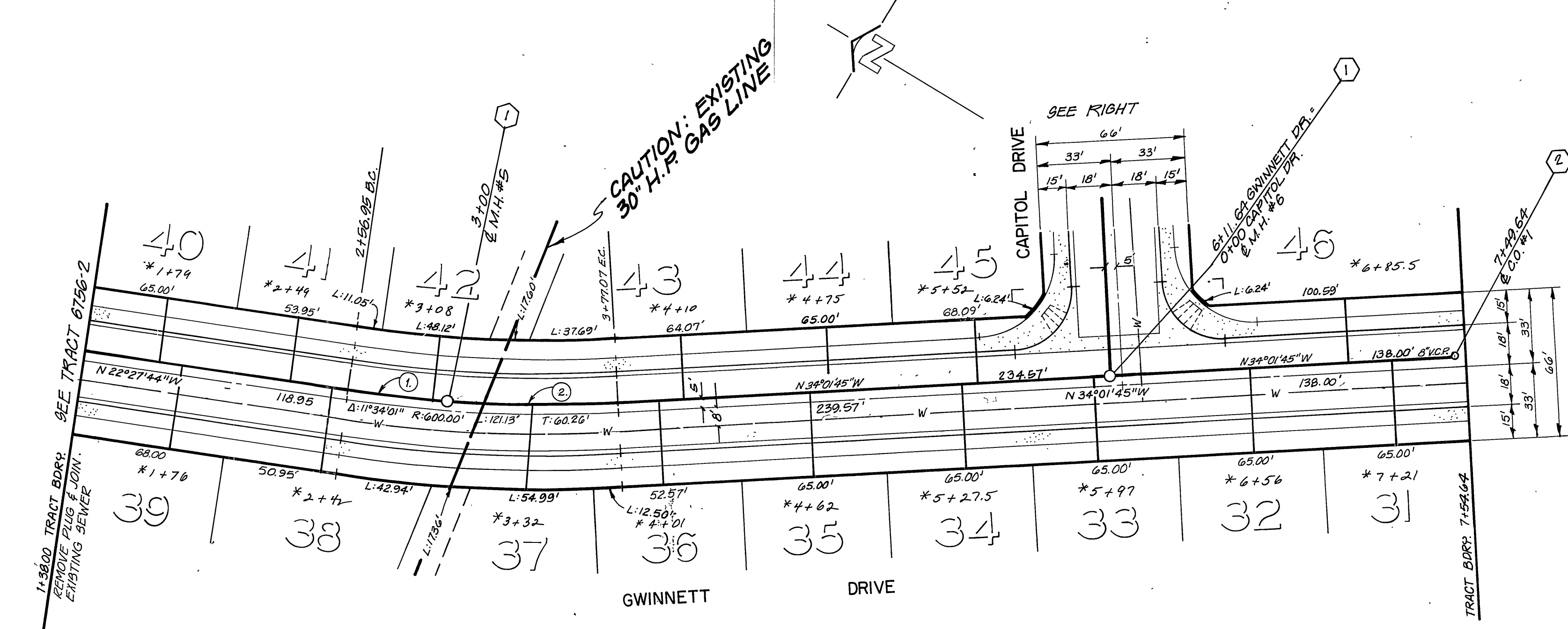
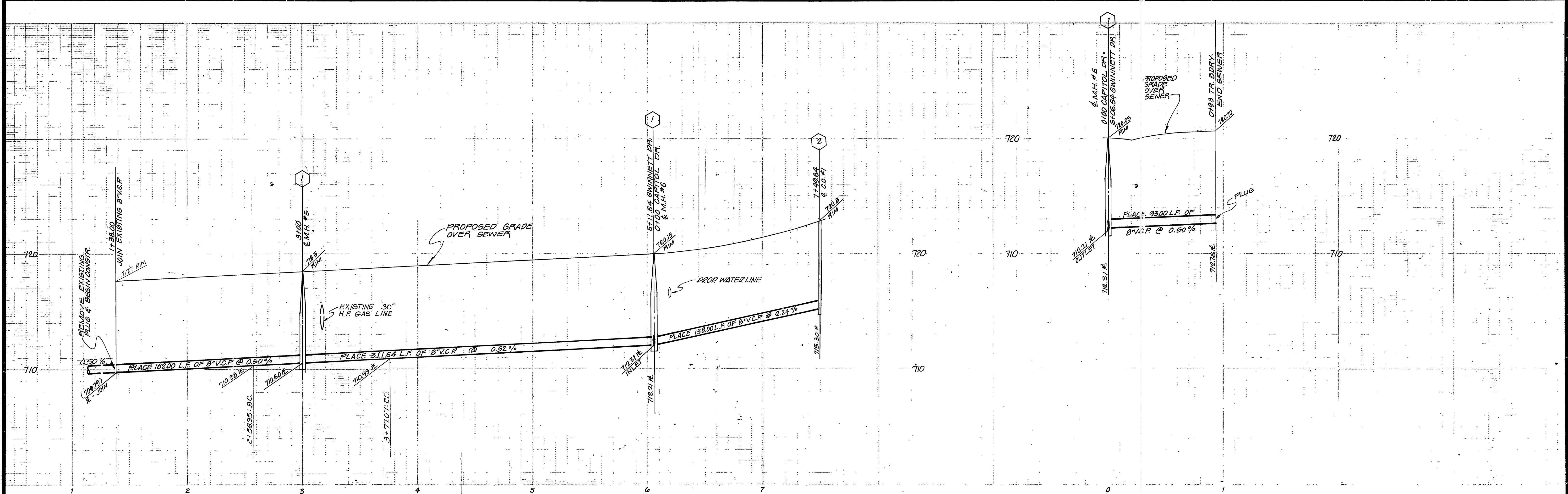
*AS BUILT 8-78 RPT



NO.	R	D	T	L
1	493.00'	5°43'55"	24.78'	49.52'
2	505.00'	5°43'55"	25.28'	50.52'

BENCHMARK
 U.S.C. & G.S. B.M. K-38 1924 DISC IN HEADWALL
 ON NW CORNER FILLMORE & S.F.R. TRACKS
 ELEV. 722.00
 F.D. 704/134

CITY OF RIVERSIDE, DOMESTIC SYSTEM By: <i>Walter H. Hylton</i> 6-3-77 CHIEF UTILITIES ENGINEER, WATER DATE	J. F. DAVIDSON ASSOCIATES CIVIL ENGINEERS - SURVEYORS - PLANNERS RIVERSIDE, CALIFORNIA APPROVED BY: <i>John W. Canty</i> DATE 2-8-77 R.E. No. 17550	CITY OF RIVERSIDE, CALIFORNIA DEPARTMENT OF PUBLIC WORKS APPROVED BY: <i>Abraham L. ...</i> TRAFFIC DIVISION CHIEF P. W. ENGR. DATE 6-22-77	SEWER PLAN AND PROFILE TRACT 6756-3 NATIONAL DRIVE CONGRESS DRIVE		PROJECT NO. S-1102
			HORIZ. SCALE: 1" = 40' VERT. SCALE: 1" = 4'		SHEET 2 OF 3 FILE NO. 5557



NOTE:
CONNECTIONS ARE NOT PERMITTED TO THIS LINE
UNTIL A CLEANOUT OR MAN-HOLE IS INSTALLED.

CURVE DATA			
NO.	Δ	R	L
(1)	04°08'44"	595.00'	43.05'
(2)	07°25'17"	595.00'	77.07'

BENCH MARK
U.S.C. & G.S. B.M. K-38 1924 DISC IN HEADWALL
ON N.W. CORNER FILLMORE & S.F.R.R. TRACKS
ELEV. 722.010
F.D. 700134

CITY OF RIVERSIDE, DOMESTIC SYSTEM
By: *Walter Hylton* 6-3-77
CHIEF UTILITIES ENGINEER, WATER DATE

J. F. DAVIDSON ASSOCIATES
CIVIL ENGINEERS - SURVEYORS - PLANNERS
RIVERSIDE, CALIFORNIA
APPROVED BY: *J. W. Coyle* DATE 2-8-77
R.E. No. 17550

MARK	REVISIONS	APPR.	DATE
DESIGNED BY	DRAWN BY	CHECKED BY	

CITY OF RIVERSIDE, CALIFORNIA
DEPARTMENT OF PUBLIC WORKS
APPROVED BY: *[Signature]* DATE 6-22-77
PRINCIPAL ENGINEER
PARK DEPARTMENT
TRAFFIC DIVISION
CHIEF P. W. ENGR.
DATE 6-22-77

* AS BUILT 8.78 EFT
SEWER PLAN AND PROFILE
TRACT 6756-3
GWINNETT DRIVE
CAPITOL DRIVE
INDEXED R.R.
PROJECT NO. S-1102
SHEET 3 OF 3
FILE NO. 5557

HORIZ. SCALE: 1" = 40'
VERT. SCALE: 1" = 4'