

INDEX MAP
SCALE: 1" = 200'

Contractor agrees that he shall assume sole and complete responsibility for job site conditions during the course of construction of this Project, including safety of all persons and property; that this requirement shall apply continuously and not be limited to normal working hours; and that the Contractor shall defend, indemnify and hold the Owner and the Engineer harmless from any and all liability, real or alleged, in connection with the performance of work on this Project, excepting for liability arising from the sole negligence of the Owner or the Engineer.

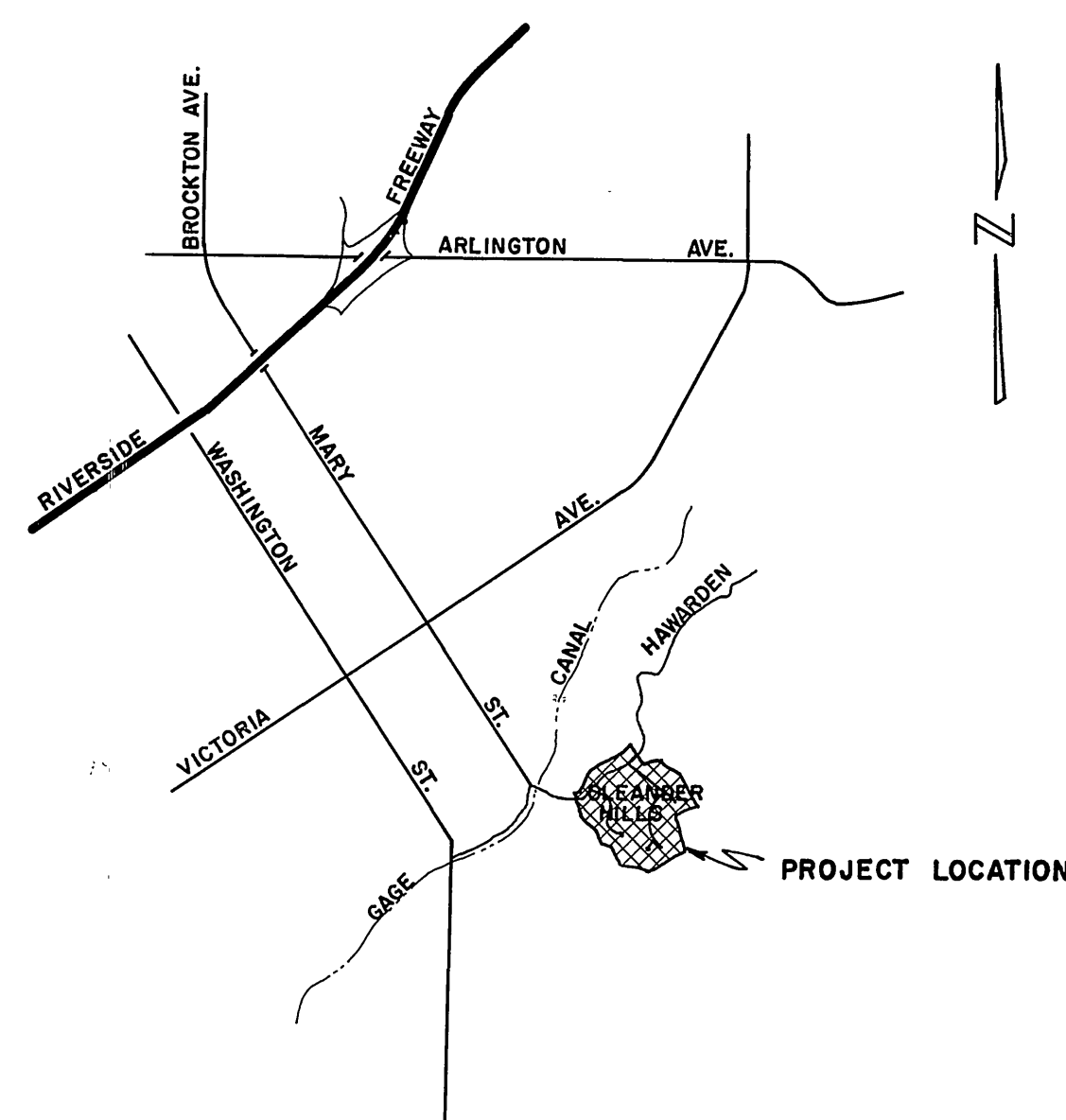


NOTE:

The private engineer signing these plans is responsible for the accuracy and acceptability of the work hereon. In the event of discrepancies arising during construction, the private engineer signing the plans shall be responsible for determining an acceptable solution and revising the plans for approval by the City.

GENERAL NOTES

1. Construction to be in accordance with Standard Specifications for Public Works Construction, 1976 Edition and Special Provisions.
2. All manholes shall be in accordance with Standard Dwg. No. 500. Top of all manholes to meet existing ground or street surfaces.
3. All clearcuts shall be in accordance with Standard Dwg. No. 560. Top of all clearcuts to meet existing ground or street surfaces.
4. Pipe bedding shall be in accordance with Standard Dwg. No. 452, Case 1 unless otherwise shown.
5. Sewer laterals shall be laid in accordance with Std. Dwg. No. 562.
6. • Indicates property owner has replied to sewer lateral placement.



LOCATION MAP
N. T. S.

BENCH MARK

1/4" spike and lead in N'ly end of E'ly headwall at Washington Street and Gage Canal. Precise BM F&F per CIR precise datum. CIR F.B. 846/21.
E.L.: 1010.555

CITY OF RIVERSIDE
DOMESTIC SYSTEM AND GAGE CANAL SYSTEM
BY *Windy Nelson* 7-29-77
CHIEF UTILITIES ENGINEER, WATER DATE

J. F. DAVIDSON ASSOCIATES
CIVIL ENGINEERS - SURVEYORS - PLANNERS
RIVERSIDE, CALIFORNIA
APPROVED BY *J. F. Davidson* DATE *4/22/77*
P.E. No. 17550

CHANGED NO. OF SHEETS	1/19/78
REVISED INDEX MAP	11/2/77
MARK	REVISIONS
DESIGNED BY	DRAWN BY
CHECKED BY	<i>Windy Nelson</i>

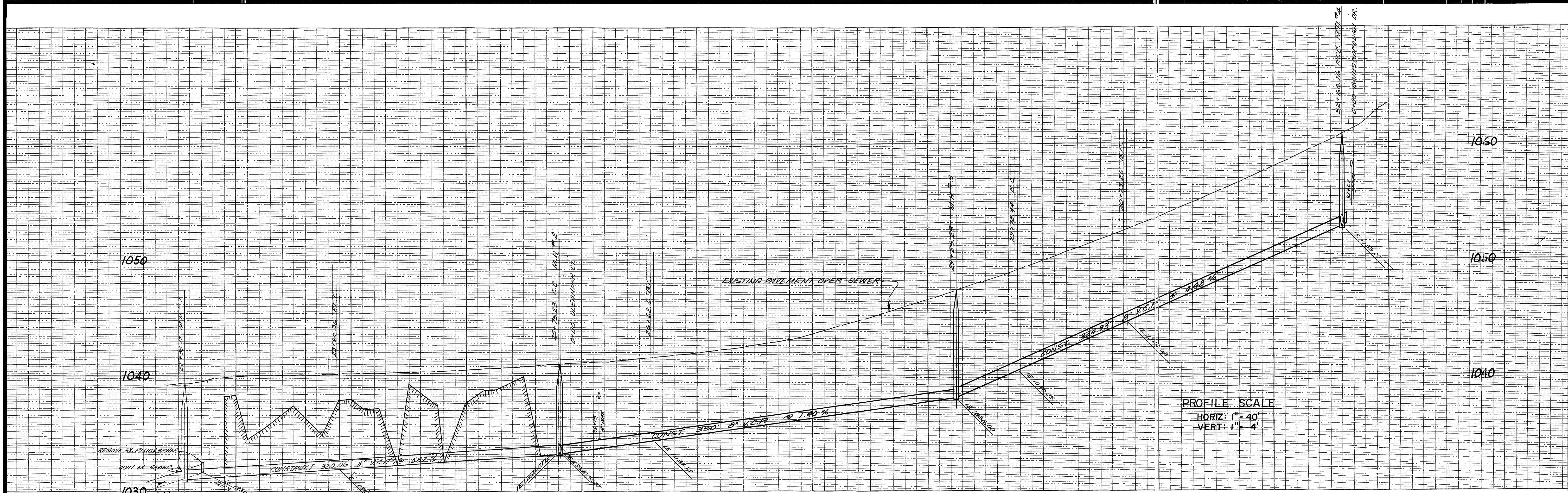
CITY OF RIVERSIDE, CALIFORNIA
DEPARTMENT OF PUBLIC WORKS
APPROVED BY *Windy Nelson* DATE *10-5-77*
OFFICE ENGINEER
PARK DEPARTMENT
TRAFFIC DIVISION
ASSISTANT CITY ENG.

TITLE SHEET
OLEANDER HILLS
ASSESSMENT DISTRICT
(SEWER)

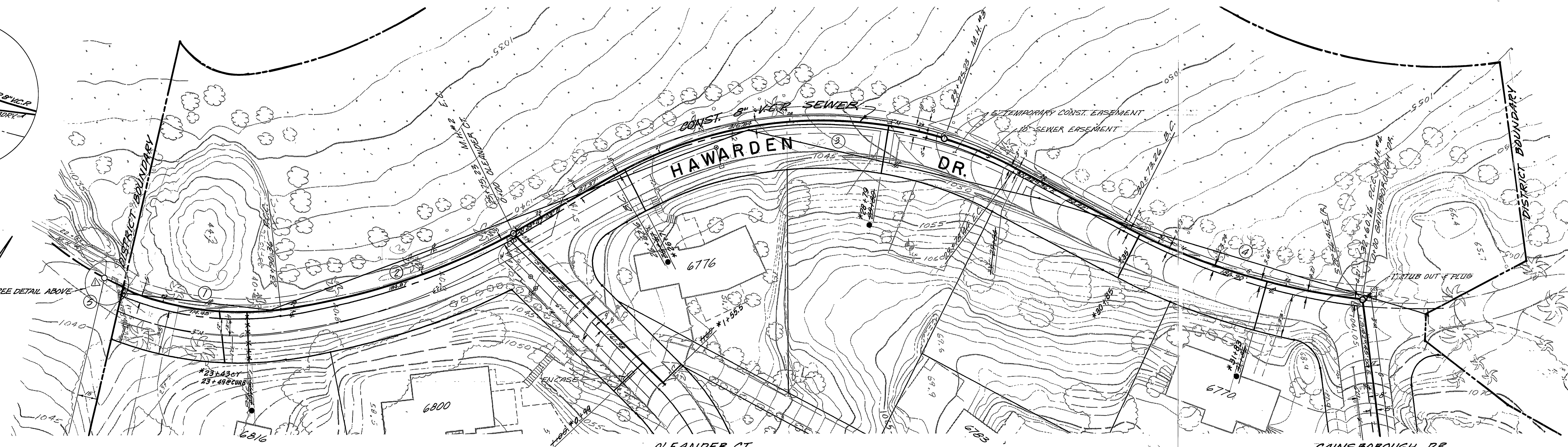
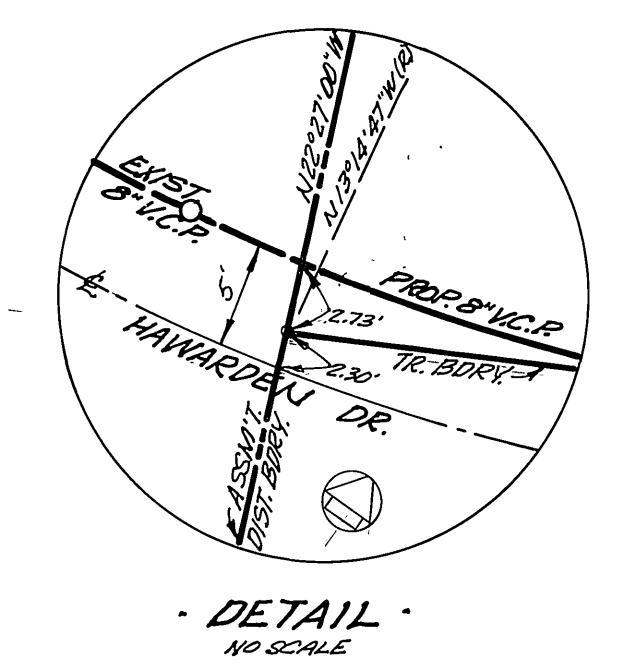
ACCOUNT NO. 84-451-652
INDEXED R.R.
S-1103
SHEET 1 OF 7
FILE NO. 2540

*AS BUILT 1-79 KPT

HORIZ. SCALE: 1" = VERT. SCALE: 1" =



PROFILE SCALE
 HORIZ: 1" = 40'
 VERT: 1" = 4'



CURVE	Δ	R	L	T
1	29°45'23"	230'	119.45'	61.10'
2	21°23'25"	495'	184.87'	93.53'
3	57°48'07"	313'	315.84'	172.84'
4	22°32'41"	475'	186.90'	94.68'
5	08°55'15"	230'	15.74'	7.87'

BENCH MARK
 Fd. spike and wash in N'y end of E'ly headwall at Washington Street and Gage Canal. Precise BM F6-F per CIR precise datum. CIR FB 846/21
 EL: 1012.555

CITY OF RIVERSIDE
 DOMESTIC SYSTEM AND GAGE CANAL SYSTEM
 BY *Melvin Solen* 7-29-77
 CHIEF UTILITIES ENGINEER, WATER

J. F. DAVIDSON ASSOCIATES
 CIVIL ENGINEERS - SURVEYORS - PLANNERS
 RIVERSIDE, CALIFORNIA
 APPROVED BY *John W. Canty* DATE 9/22/77
 R.E. No. 17550

MOVED I.M.#1 R.M. 1/19/78
 CHANGED NO. OF SHEETS R.M.# 1/19/78
 MARK REVISIONS APPR. DATE
 DESIGNED BY _____ DRAWN BY _____ CHECKED BY *WOLUS*

CITY OF RIVERSIDE, CALIFORNIA
 DEPARTMENT OF PUBLIC WORKS
 APPROVED BY _____ BY DATE _____
 PRINCIPAL ENGINEER
 PARK DEPARTMENT
 TRAFFIC DIVISION
 CHIEF P. W. ENGR. *Wolus* 10/4

*AS BUILT 1-79 KPT
SEWER PLAN & PROFILE
OLEANDER HILLS
ASSESSMENT DISTRICT (SEWER)
HAWARDEN DRIVE
 HORIZ. SCALE: 1" = 40' VERT. SCALE: 1" = 4'

INDEXED P.R.
 ACCOUNT NO. 82-451-852
S-1103
 SHEET 2 OF 7
 FILE NO. 3540

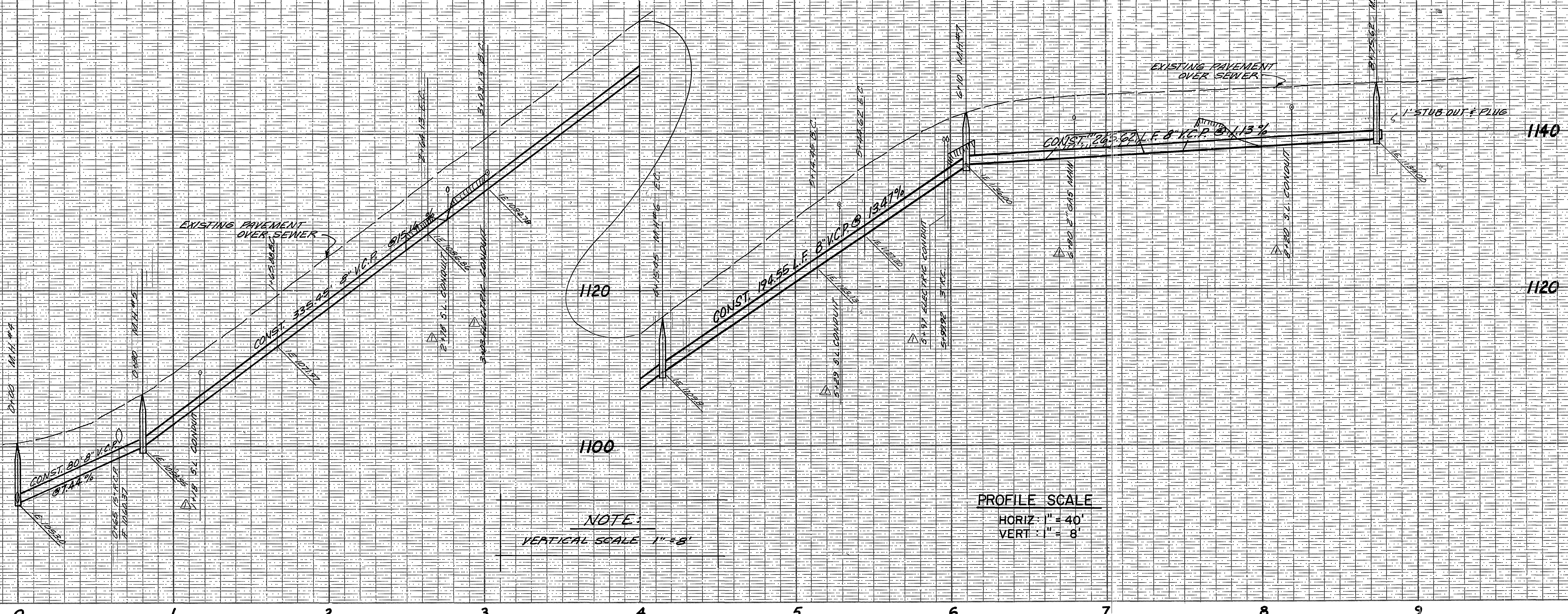
1100

1080

1060

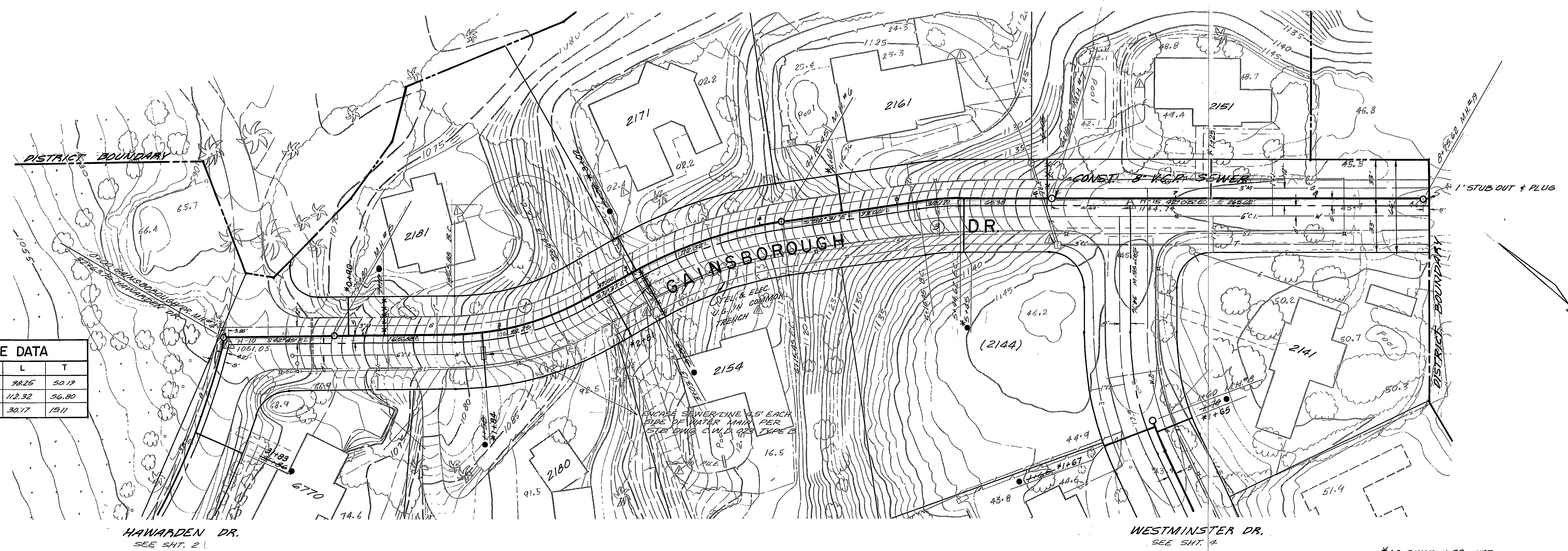
1140

1120



NOTE:
VERTICAL SCALE 1" = 8'

PROFILE SCALE
HORIZ: 1" = 40'
VERT: 1" = 8'



SEWER CURVE DATA				
CURVE	A	R	L	T
1	28°52'00"	125'	98.25	50.19
2	21°06'00"	305'	112.32	56.80
3	08°26'00"	205'	30.17	12.11

BENCH MARK

Fd spike and lead in N'ly end of E'ly headwall at Washington Street and Gage Canal. Precise BM F6-F per CIR precise datum CIR FB 846/21. EL. 1010.535

CITY OF RIVERSIDE
DOMESTIC SYSTEM AND GAGE CANAL SYSTEM
BY *Wesley Taylor* 7-29-77
CHIEF UTILITIES ENGINEER, WATER DATE

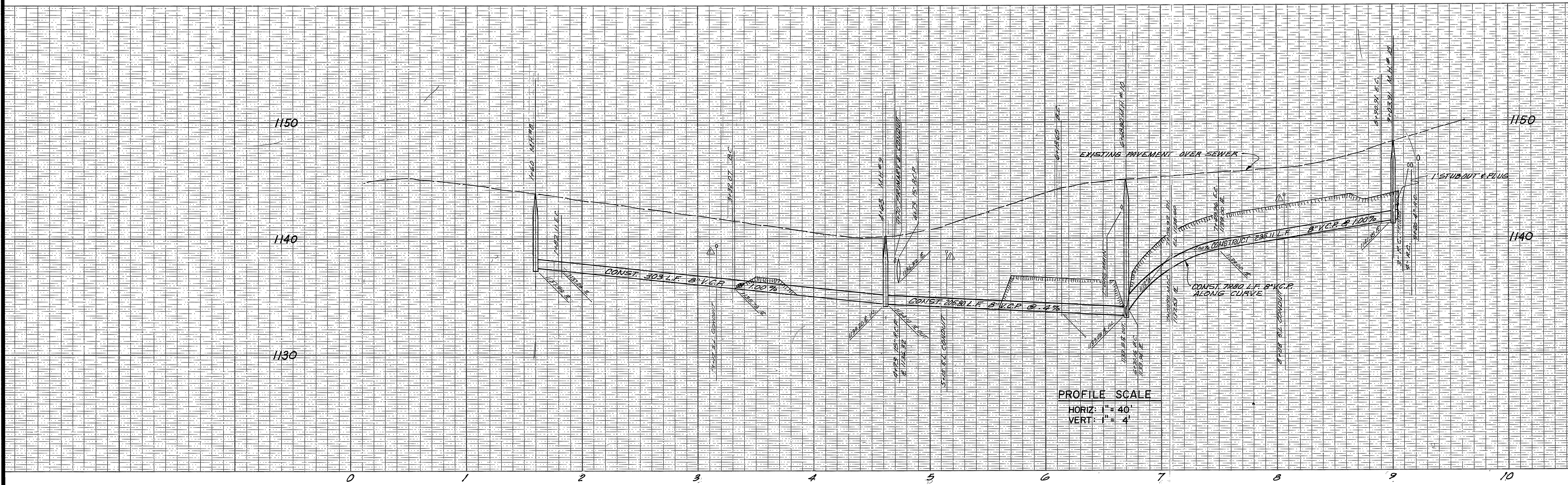
J. F. DAVIDSON ASSOCIATES
CIVIL ENGINEERS - SURVEYORS - PLANNERS
RIVERSIDE, CALIFORNIA
APPROVED BY *John W. Curtis* DATE 4/22/77
R.E. No. 17550
W.O. 5218 FOR: CITY OF RIVERSIDE F.B. 102

DESIGNED BY: _____ DRAWN BY: _____ CHECKED BY: *WJL*

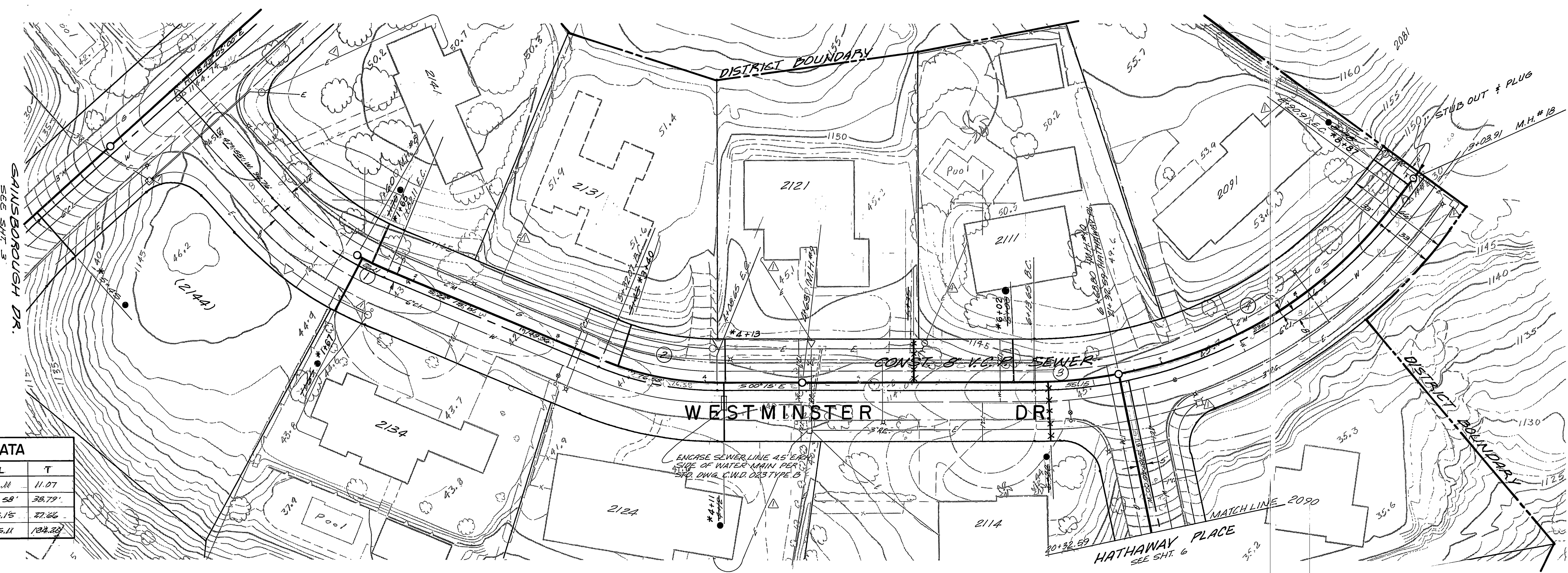
CITY OF RIVERSIDE, CALIFORNIA
DEPARTMENT OF PUBLIC WORKS
PRINCIPAL ENGINEER: *WJL* DATE 1/19/74
PARK DEPARTMENT: *WJL* DATE 1/19/74
TRAFFIC DIVISION: _____
CHIEF P. W. ENGR. *WJL* 10-4

SEWER PLAN & PROFILE
OLEANDER HILLS
ASSESSMENT DISTRICT (SEWER)
GAINSBOROUGH DR.
HORIZ. SCALE: 1" = 40' VERT. SCALE: 1" = 8'

INDEXED R.R. ACCOUNT NO. 84-151-652
S-1103
SHEET 3 OF 7
FILE NO. 5540



PROFILE SCALE
 HORIZ: 1" = 40'
 VERT: 1" = 4'



SEWER CURVE DATA				
CURVE	Δ	R	L	T
①	06°29'47"	195'	22.11	11.07
②	22°30'00"	195'	76.58	38.79
③	10°42'44"	295'	56.15	27.66
④	45°39'50"	225'	235.11	104.29

BENCH MARK
 Fd. spike and lead in N'y end of E'y headwall at Washington Street and Gage Canal. Precise BM F6-F per C/R precise datum. C/R F.B. 846/21 EL: 1010.585



CITY OF RIVERSIDE
 DOMESTIC SYSTEM AND GAGE CANAL SYSTEM
 BY *Wally Hyler* 7-29-77
 CHIEF UTILITIES ENGINEER, WATER DATE

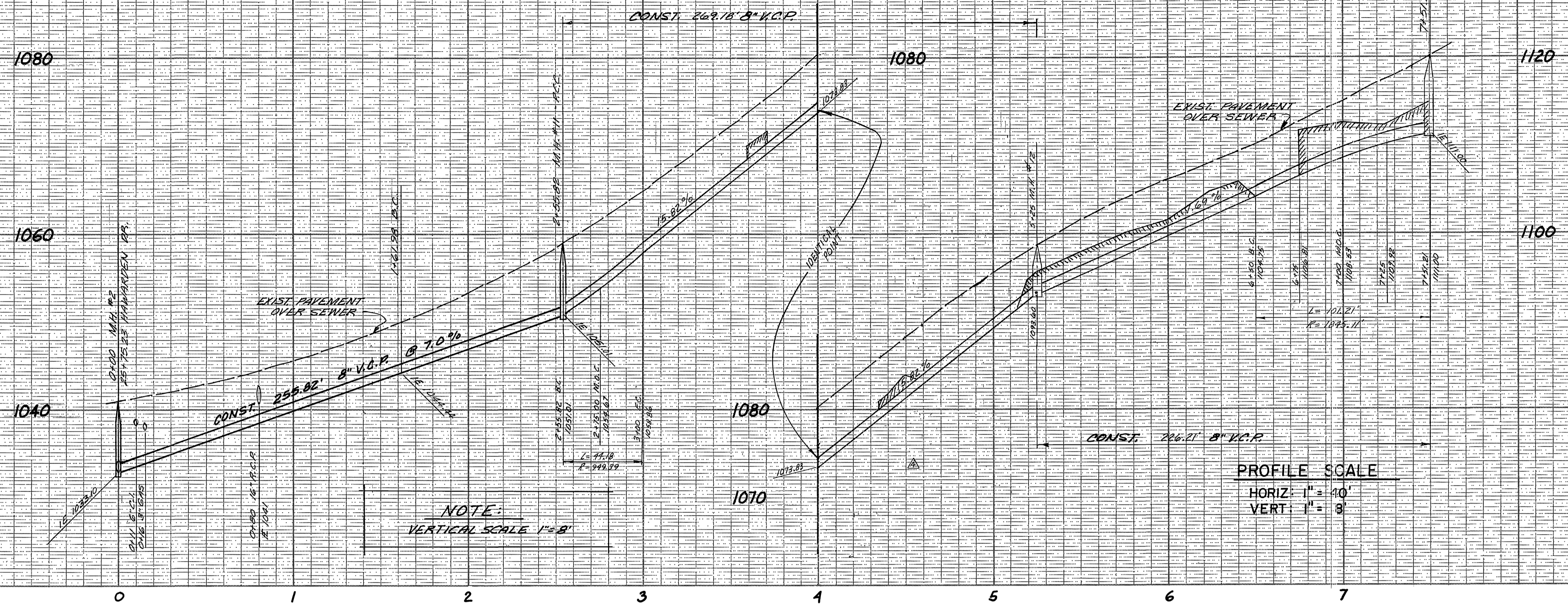
J. F. DAVIDSON ASSOCIATES
 CIVIL ENGINEERS - SURVEYORS - PLANNERS
 RIVERSIDE, CALIFORNIA
 APPROVED BY: *John W. Canty* DATE 9/22/77
 R.E. No. 17550
 W.O. 5218 FOR: CITY OF RIVERSIDE F.B. 104

MARK	REVISIONS	APPR.	DATE
Δ	CHANGED NO. OF SHEETS FROM 11/78		11/78
Δ	ADDED UTILITY INFORMATION FROM 11/78		11/78

CITY OF RIVERSIDE, CALIFORNIA
 DEPARTMENT OF PUBLIC WORKS
 APPROVED BY: *[Signature]* DATE 10/14/77
 PRINCIPAL ENGINEER
 PARK DEPARTMENT
 TRAFFIC DIVISION
 CHIEF P. W. ENGR. *[Signature]* 10/14/77

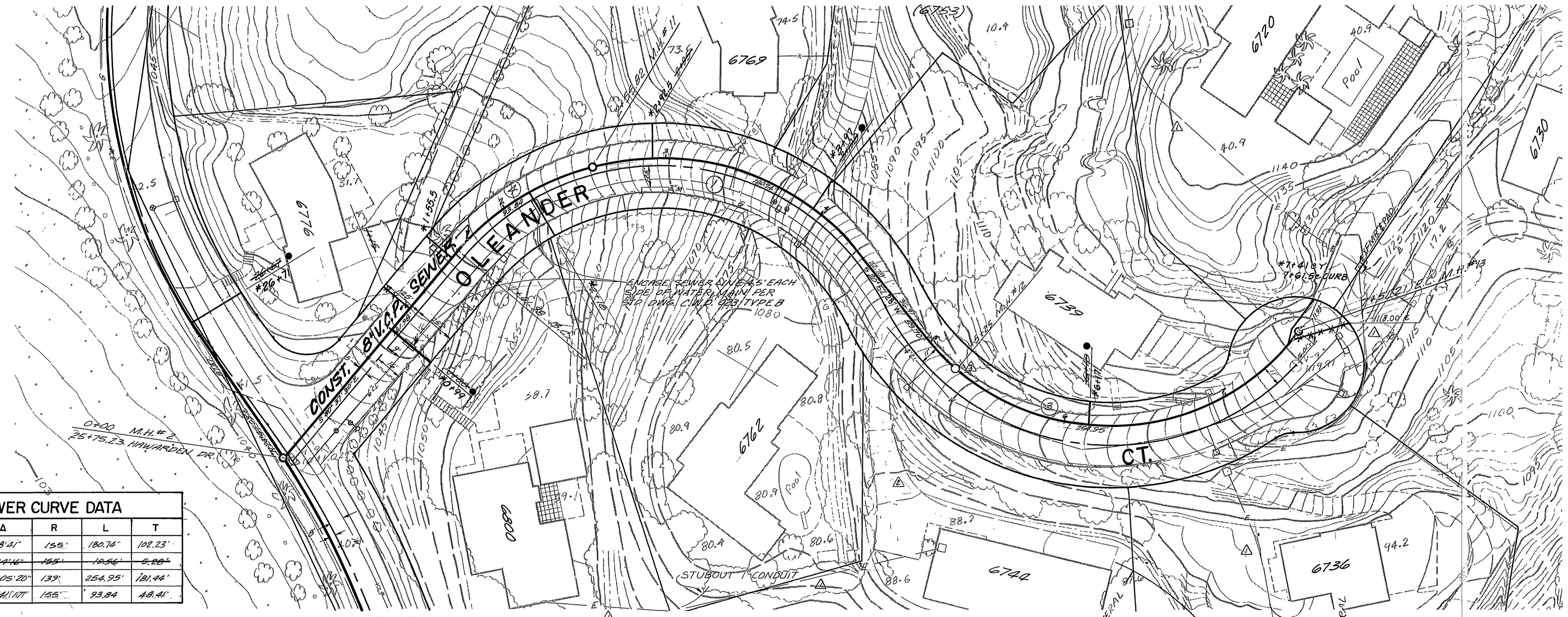
SEWER PLAN & PROFILE
OLEANDER HILLS
ASSESSMENT DISTRICT (SEWER)
WESTMINSTER DR.
 HORIZ. SCALE: 1" = 40' VERT. SCALE: 1" = 4'

INDEXED R.R. ACCOUNT NO. 84-151-652
S-1103
 SHEET 4 OF 7
 FILE NO. 6540



NOTE:
VERTICAL SCALE 1"=8'

PROFILE SCALE
HORIZ: 1" = 40'
VERT: 1" = 8'



SEWER CURVE DATA				
CURVE	Δ	R	L	T
1	67°43'41"	155'	180.74'	108.23'
2	3°41'46"	155'	180.74'	5.80'
3	105°05'20"	139'	254.95'	181.44'
4	34°41'17"	155'	73.84'	48.41'

HAWARDEN DR.
SEE SHT. 2

BENCH MARK

Fd spike and lead in N'ly end of E'ly headwall at Washington Street and Gage Canal. Precise BM F6-F per CIP precise datum. CIP F.B. 846/21.
EL: 1010.555

J. F. DAVIDSON ASSOCIATES
CIVIL ENGINEERS - SURVEYORS - PLANNERS
RIVERSIDE, CALIFORNIA
APPROVED BY: *John W. County* DATE: 4/22/77
R.E. No. 17550

MARK	REVISIONS	APPR.	DATE
Δ	CHANGED NO. OF SHEETS RMH		1/9/77
Δ	REVISIONS ON PROFILE RMH		1/9/77
Δ	MOVED M.H. #2 RMH		1/9/77
Δ	REMOVED SEWER RMH		1/9/77
Δ	ADDED UTILITY INFORMATION RMH		10/17/77

CITY OF RIVERSIDE, CALIFORNIA
DEPARTMENT OF PUBLIC WORKS
APPROVED BY: *[Signature]* DATE: 10-5-77
PRINCIPAL ENGINEER
PARK DEPARTMENT
TRAFFIC DIVISION
CHIEF P. W. ENGR.

*AS BUILT 1-79 KPT

INDEXED R.R. ACCOUNT NO. 84-451-652

SEWER PLAN & PROFILE

OLEANDER HILLS ASSESSMENT DISTRICT (SEWER)

OLEANDER COURT

S-1103

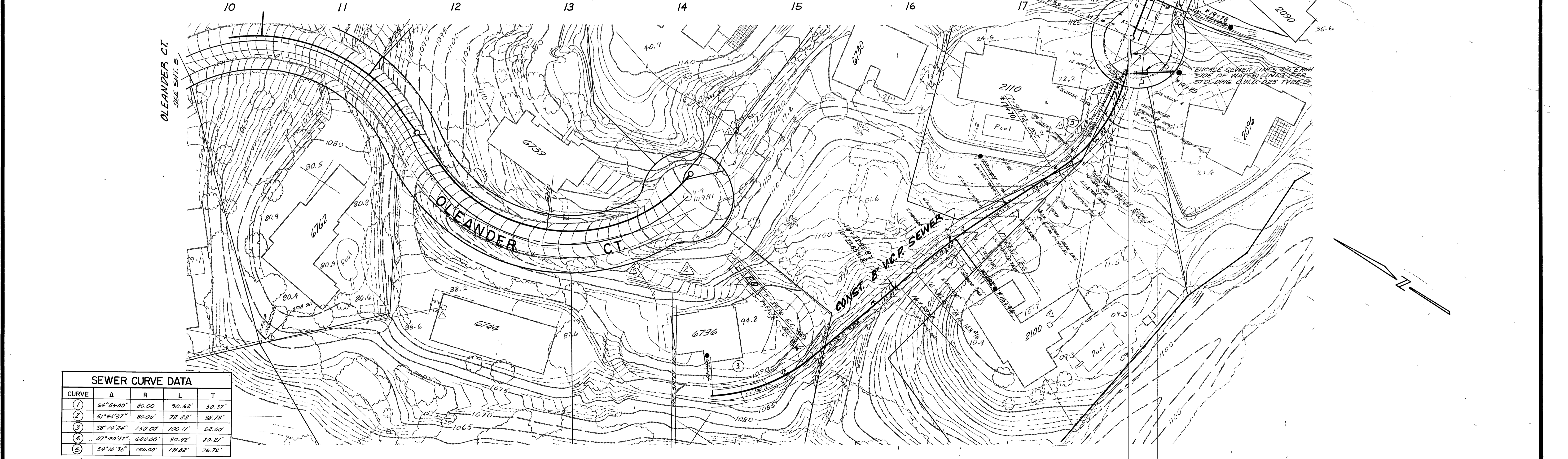
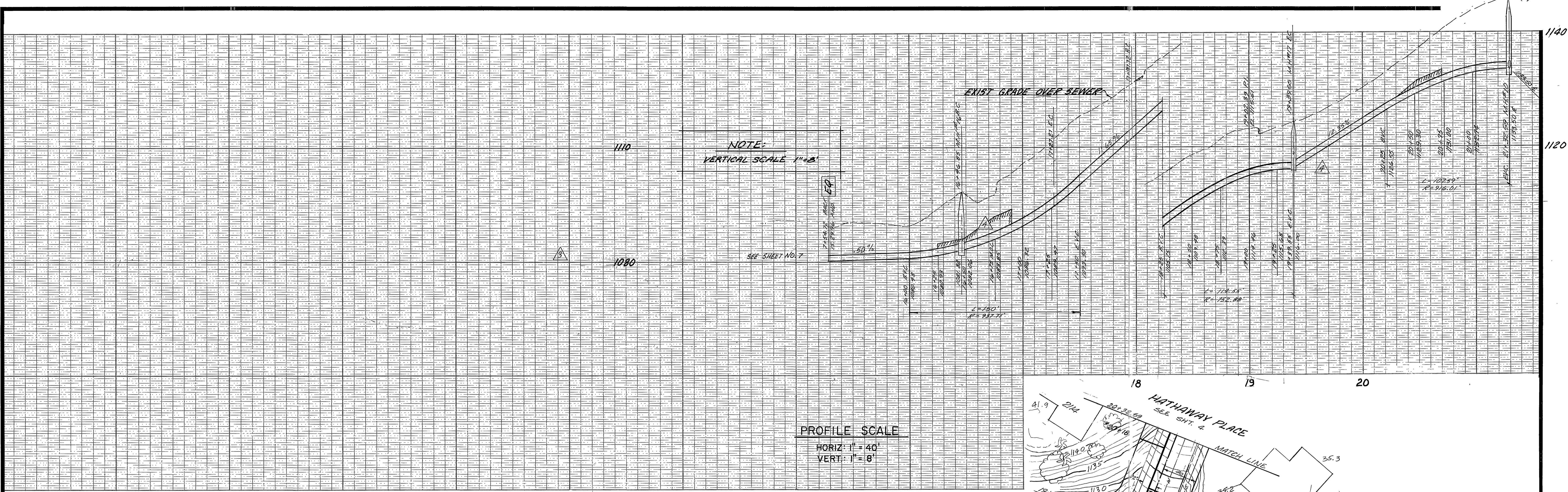
5 OF 7

SHEET. 5 OF 7

FILE NO. 5540

HORIZ. SCALE: 1" = 40' VERT. SCALE: 1" = 8'

CITY OF RIVERSIDE
DOMESTIC SYSTEM AND GAGE CANAL SYSTEM
BY: *Wesley Ayler* 7-29-77
CHIEF UTILITIES ENGINEER, WATER, DATE



SEWER CURVE DATA				
CURVE	Δ	R	L	T
1	64°59'00"	80.00	90.62	50.87'
2	51°43'37"	80.00	72.22	38.78'
3	38°14'24"	150.00	100.11	52.00'
4	07°40'41"	600.00	80.42	40.27'
5	54°10'35"	150.00	111.83	76.72'

BENCH MARK

Fd. spike and lead in N¹/₂ end of E¹/₂ headwall at Washington Street and Gage Canal. Precise BM F6-F per C/JR precise datum. C/JR F.B. 846121.
 E.L. 1010.555

CITY OF RIVERSIDE
 DOMESTIC SYSTEM AND GAGE CANAL SYSTEM
 BY *Walter J. Miller* 7-29-77
 CHIEF UTILITIES ENGINEER, WATER

J. F. DAVIDSON ASSOCIATES
 CIVIL ENGINEERS - SURVEYORS - PLANNERS
 RIVERSIDE, CALIFORNIA
 APPROVED BY *John W. County* DATE 4/22/77
 R.E. No. 17550

MARK	REVISIONS	APPR.	DATE
Δ	ADDED TOPS REVISION PROFILE	<i>Walter J. Miller</i>	3/17/78
Δ	CHANGED NO. OF SHEETS FROM 11/17/78	<i>Walter J. Miller</i>	11/17/78
Δ	REMOVED PROFILE FROM	<i>Walter J. Miller</i>	11/17/78
Δ	REMOVED PROFILE FROM	<i>Walter J. Miller</i>	11/17/78
Δ	REMOVED PLAN FROM	<i>Walter J. Miller</i>	11/17/78
Δ	ADDED UTILITY INFORMATION FROM	<i>Walter J. Miller</i>	11/17/78

CITY OF RIVERSIDE, CALIFORNIA
 DEPARTMENT OF PUBLIC WORKS
 APPROVED BY *Walter J. Miller* DATE 4/22/77
 PRINCIPAL ENGINEER
 PARK DEPARTMENT
 TRAFFIC DIVISION
 CHIEF P. W. ENGR.

SEWER PLAN & PROFILE
 OLEANDER HILLS
 ASSESSMENT DISTRICT (SEWER)
 EASEMENT
 BETWEEN HAWARDEN DR. & HATHAWAY PL.
 HORIZ. SCALE: 1" = 40'
 VERT. SCALE: 1" = 8'

ACCOUNT NO. 84-451-652
S-1103
 SHEET 6 OF 7
 FILE NO. 5580

*AG BUILT 1-79 KPT

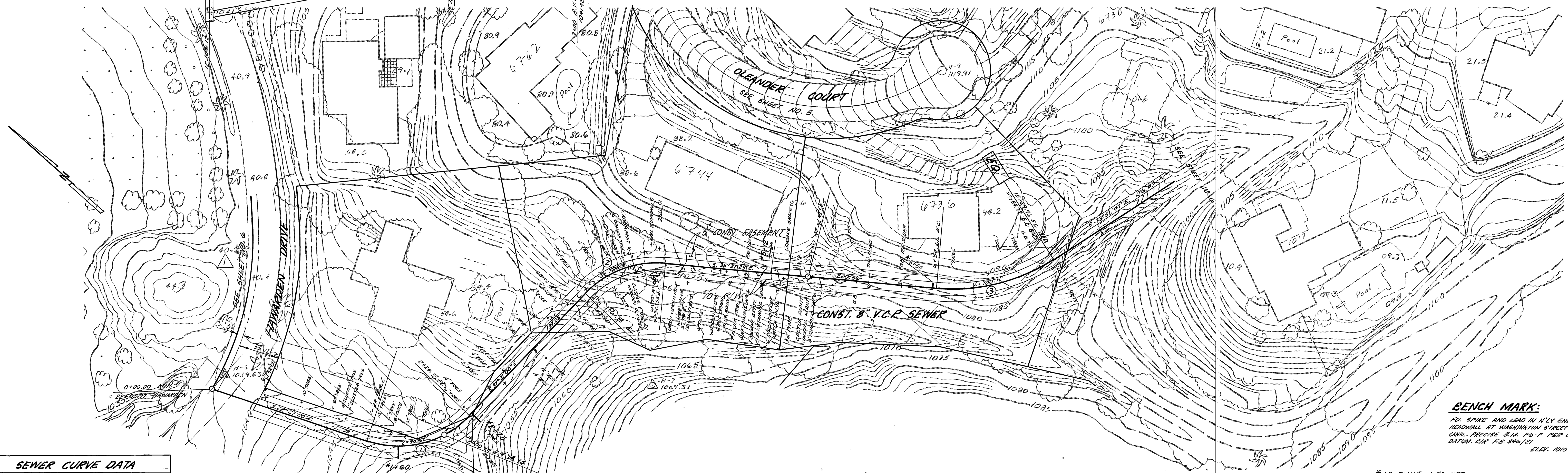
ENGINEER R.J.

1060

1040

EXIST GRADE OVER SEWER

SEE SHEET NO. 6



BENCH MARK:
 FD. SPIKE AND LEAD IN N'LY END OF E'LY
 HEADWALL AT WASHINGTON STREET AND GAGE
 CANAL. PRECISE B.M. PG-F PER CIP PRECISE
 DATUM. CIP T.B. 8/6/71. ELEV. 1010.555

C	D	R	L	T
1	64°54'00"	80.00'	70.42'	50.87'
2	51°43'37"	80.00'	72.22'	58.78'
3	38°14'24"	150.00'	100.11'	52.00'
4	07°40'47"	600.00'	80.92'	90.27'
5	54°10'36"	150.00'	141.83'	76.72'

J. F. DAVIDSON ASSOCIATES
 CIVIL ENGINEERS - SURVEYORS - PLANNERS
 RIVERSIDE, CALIFORNIA
 APPROVED BY *Joh W. Canty* DATE 1/9/78
 (R.E. No. 17560)

MARK	REVISIONS	APPR.	DATE
Δ	REVISED PLAN RMH		1/9/78
Δ	REVISED PROFILE RMH		1/9/78
Δ	ADDED SHEET NO. 7 RMH		1/7/78
Δ	ADDED TOPO REVISED PROFILE RMH		2/28/78

CITY OF RIVERSIDE, CALIFORNIA
 DEPARTMENT OF PUBLIC WORKS
 APPROVED BY *David C. Hales* BY DATE
 PRINCIPAL ENGINEER
 PARK DEPARTMENT
 TRAFFIC DIVISION
 CHIEF P. W. ENGR.
 DATE 1/23/78

SEWER PLAN & PROFILE
 OLEANDER HILLS
 ASSESSMENT DISTRICT (SEWER)
 EASEMENT
 BETWEEN HAWARDEN DR. & HATHAWAY PL.
 HORIZ. SCALE: 1" = 40'
 VERT. SCALE: 1" = 8'

ENGINEER: RJC
 ACCOUNT NO. 84-451-652
S-1103
 SHEET 7 OF 7
 FILE NO. 5590

*AS BUILT 1-79 KET