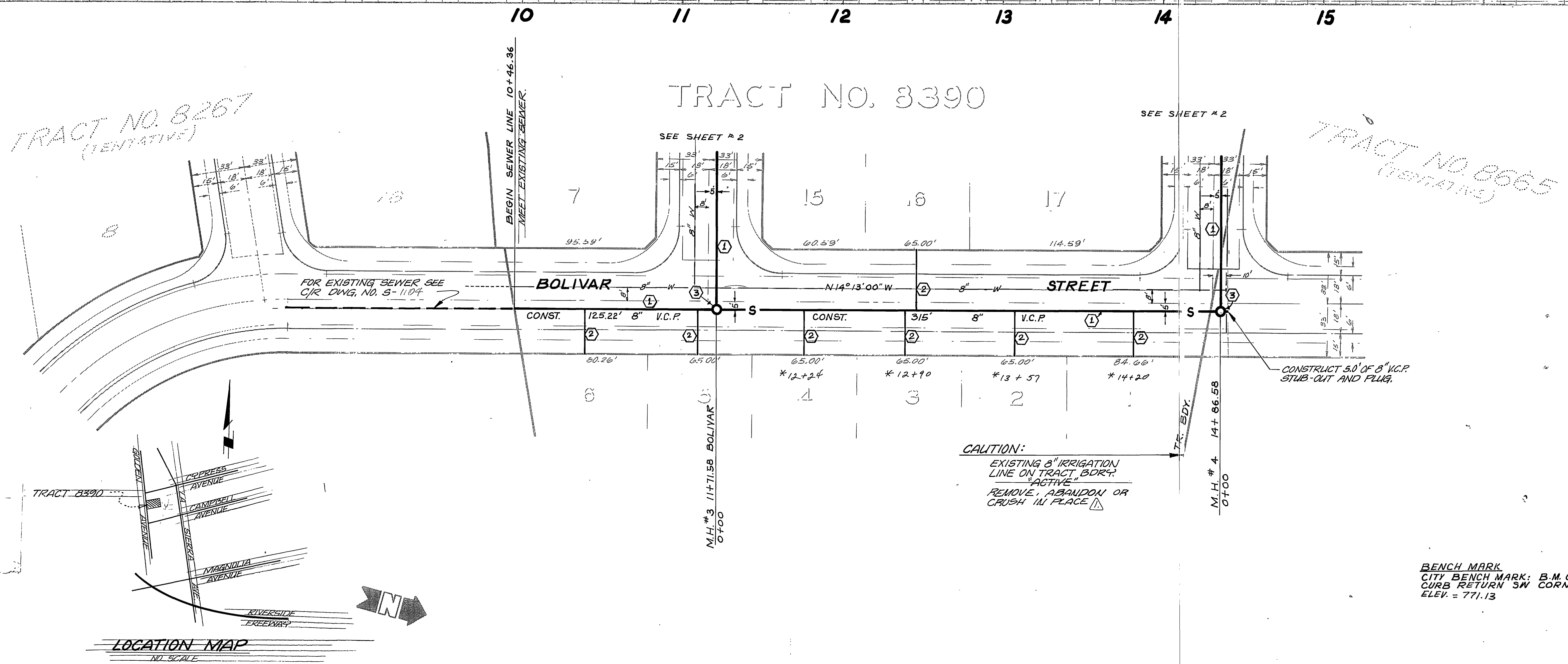


- CONSTRUCTION NOTES:**
1. CONSTRUCT 8-INCH V.C.P. SEWER MAIN.
 2. CONSTRUCT 4-INCH V.C.P. HOUSE LATERAL.
 3. CONSTRUCT M.H. PER CITY OF RIVERSIDE STANDARD NO. 500.

- GENERAL NOTES:**
1. IT SHALL BE THE RESPONSIBILITY OF THE CONTRACTOR TO CLEAR THE RIGHT OF WAY IN ACCORDANCE WITH THE PROVISIONS OF LAW AS IT AFFECTS EACH UTILITY INCLUDING IRRIGATION LINES AND APPURTENANCES AND AT NO COST TO THE CITY.
 2. CONSTRUCTION SHALL BE IN ACCORDANCE WITH THE CITY OF RIVERSIDE, DEPARTMENT OF PUBLIC WORKS, STANDARD DRAWINGS AND THE STANDARD SPECIFICATIONS FOR PUBLIC WORKS CONSTRUCTION, 1976 EDITION.
 3. LOCATION OF THE LATERALS TO BE DETERMINED IN THE FIELD AT THE DIRECTION OF THE OWNER.
 4. CONTRACTOR IS TO VERIFY EXISTING SEWER ELEVATION PRIOR TO CONSTRUCTION.
 5. THE SEWER CONTRACTOR SHALL ADJUST MANHOLES TO FINAL GRADE AFTER PAVING IS COMPLETED.
 6. A PLUG SHALL BE INSTALLED AND WILL REMAIN IN PLACE WHERE THE NEW SEWER CONNECTS WITH THE EXISTING SEWER UNTIL THE NEW SEWER IS ACCEPTED BY THE CITY.

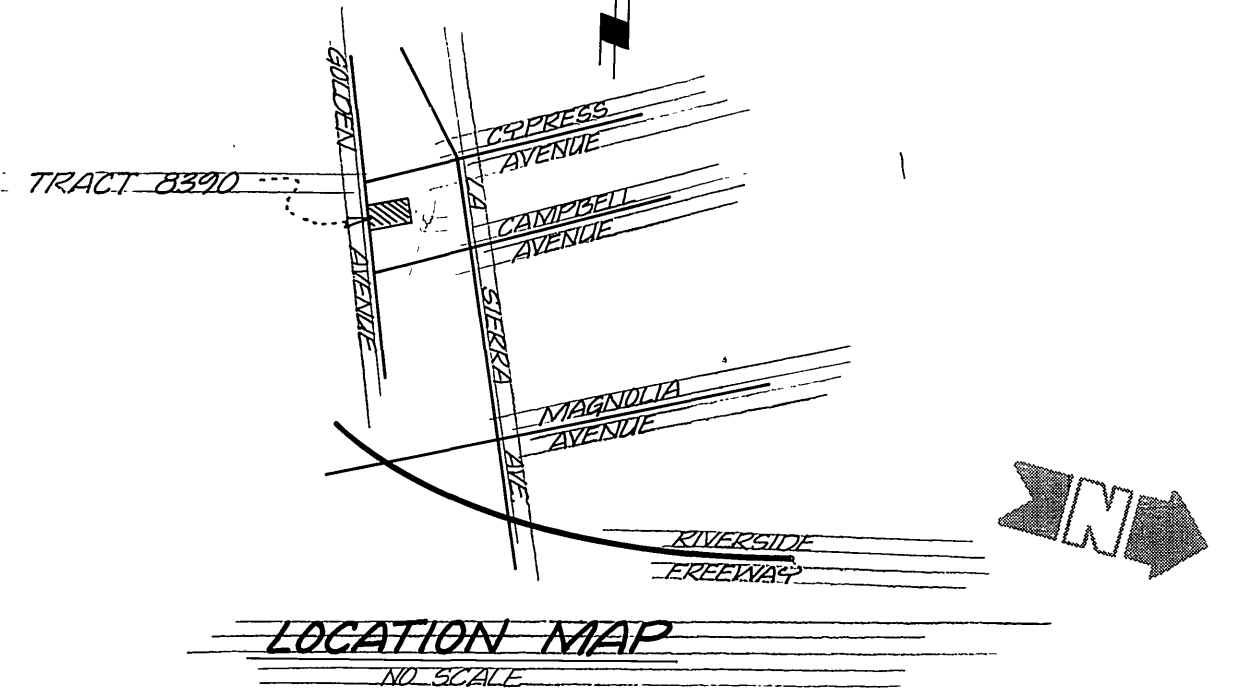
NOTE: THE PRIVATE ENGINEER SIGNING THESE PLANS IS RESPONSIBLE FOR THE ACCURACY AND ACCEPTABILITY OF THE WORK HEREON. IN THE EVENT OF DISCREPANCIES ARISING DURING CONSTRUCTION THE PRIVATE ENGINEER SIGNING THE PLANS SHALL BE RESPONSIBLE FOR DETERMINING AN ACCEPTABLE SOLUTION AND REVISING THE PLANS FOR APPROVAL BY THE CITY.



TRACT NO. 8267
(PENDING)

TRACT NO. 8390

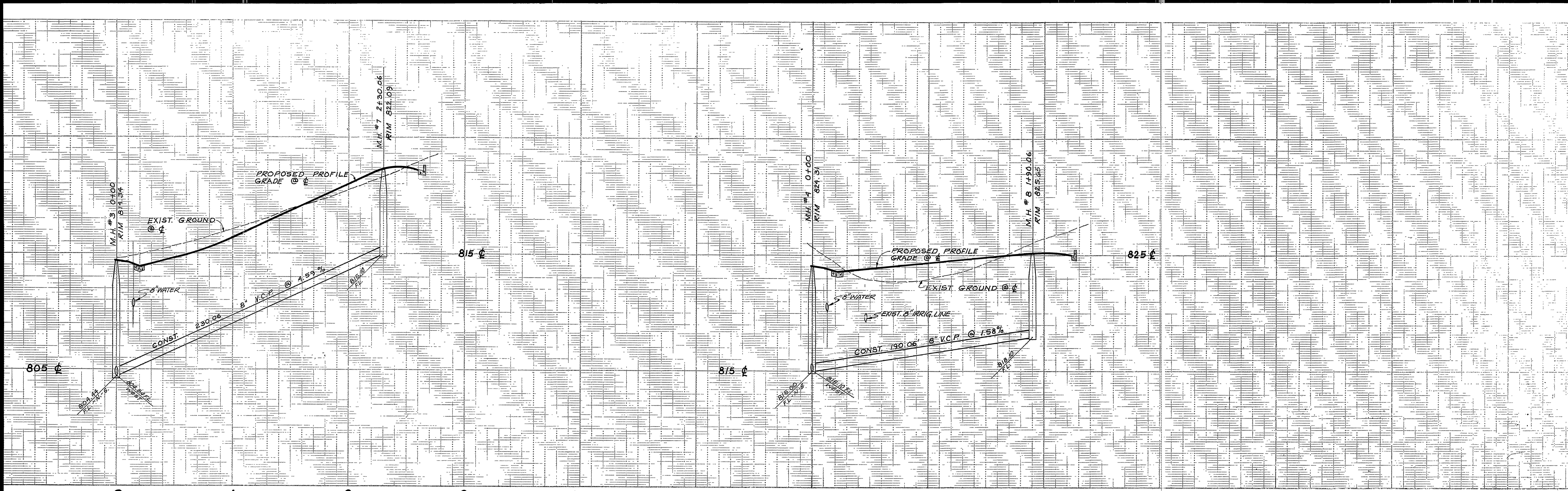
TRACT NO. 8665
(PENDING)



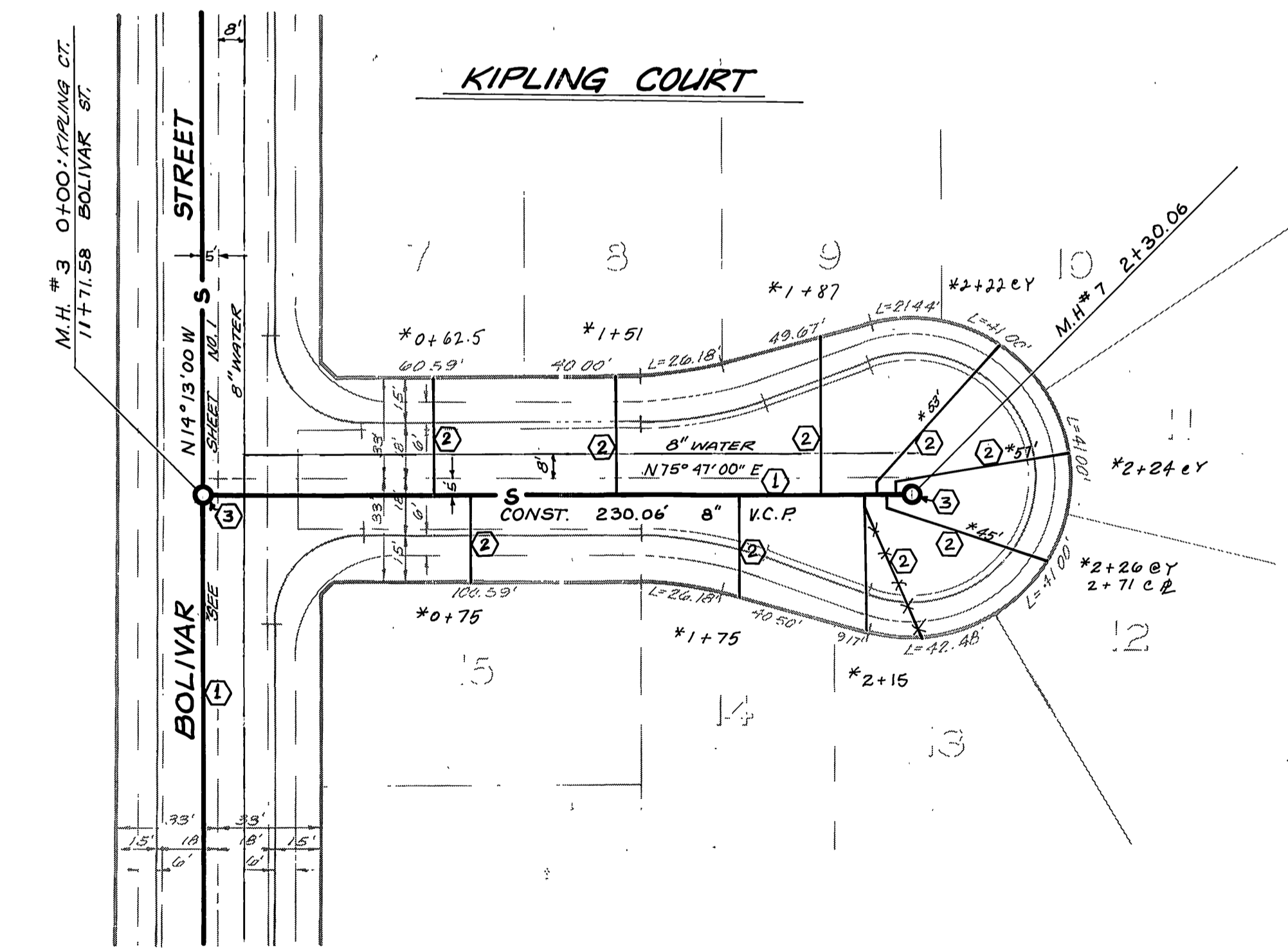
CAUTION:
EXISTING 8\"/>

BENCH MARK:
CITY BENCH MARK: B.M.G-2-B, P.K. NAIL CENTER CURB RETURN SW CORNER CAMPBELL & LA SIERRA. ELEV. = 771.13

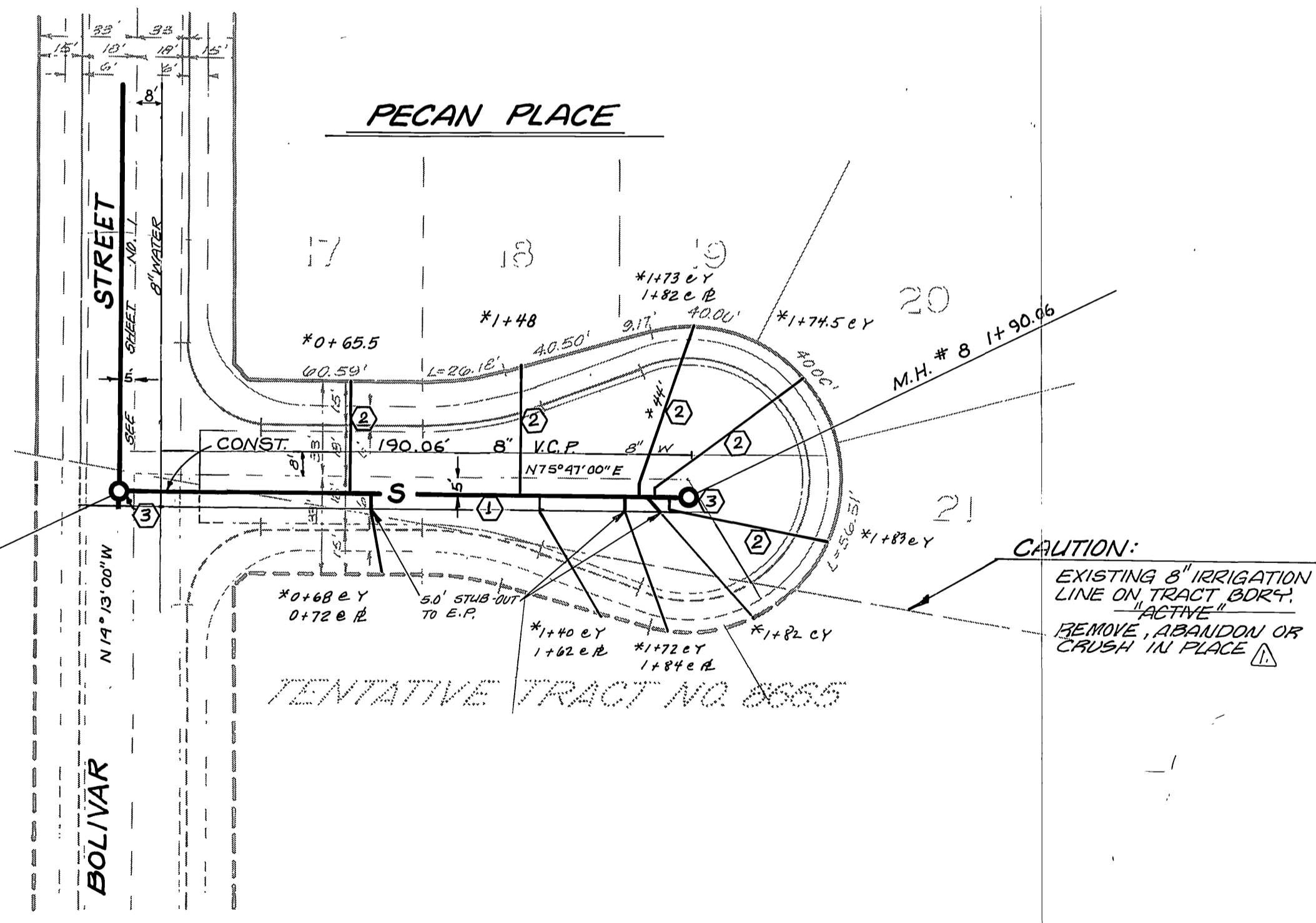
CITY OF RIVERSIDE DOMESTIC SYSTEM & IRRIGATION SYSTEM		J. F. DAVIDSON ASSOCIATES CIVIL ENGINEERS • SURVEYORS • PLANNERS 3426 TENTH STREET RIVERSIDE, CALIFORNIA		CITY OF RIVERSIDE, CALIFORNIA DEPARTMENT OF PUBLIC WORKS		SEWER PLAN & PROFILE TRACT 8390 BOLIVAR STREET		PROJECT NO. S-1105
APPROVED BY: <i>John W. Centy</i> DATE 2/3/77 R.E. NO. 17550		APPROVED BY: <i>[Signature]</i> DATE 8-25-77 CHIEF UTILITIES ENGINEER, WATER		APPROVED BY: <i>[Signature]</i> DATE 8-25-77 DIRECTOR OF PUBLIC WORKS		HORIZ. SCALE: 1" = 40' VERT. SCALE: 1" = 4'		SHEET 1 OF 2 FILE NO. 5527
W.O. 4974 FOR: DWIGHT MIZE FB. 1104/125		DESIGNED BY: KAO DRAWN BY: PPQ CHECKED BY: J.C.		CHIEF P. W. ENGR. 8-24		* AS BUILT 8-78 KET		INDEXED R/R



SEE SHEET # 1



SEE SHEET # 1



BENCH MARK
CITY BENCH MARK: B.M.O-2-B, P.K. NAIL CENTER
CURB RETURN SW CORNER CAMPBELL & LA SIERRA.
ELEV.: 771.13

NOTE:
SEE SHEET NO. 1 FOR
GENERAL & CONSTRUCTION
NOTES.

CITY OF RIVERSIDE DOMESTIC SYSTEM & IRRIGATION SYSTEM Fred Lantz for 8-5-77 CHIEF UTILITIES ENGINEER, WATER DATE	J. F. DAVIDSON ASSOCIATES CIVIL ENGINEERS SURVEYORS PLANNERS 3426 TENTH STREET RIVERSIDE, CALIFORNIA APPROVED BY: <i>John W. Curtis</i> DATE 2/3/77 R.E. NO. 175501	CITY OF RIVERSIDE, CALIFORNIA DEPARTMENT OF PUBLIC WORKS APPROVED BY: <i>[Signature]</i> PRINCIPAL ENGINEER DATE 8/25/77 CHIEF P. W. ENGR. DATE 8-25-77	*AS BUILT 879 KET INDEXED R.R.
			SEWER PLAN & PROFILE TRACT 8390 KIPLING COURT PECAN PLACE HORIZ. SCALE: 1" = 40' VERT. SCALE: 1" = 4'