

- NOTES:**
1. ■ indicates chimney (All chimneys to be brought up to 6' below existing ground.)
 2. All wyes and chimneys to be located in field.
 3. Sewer depth is such that building 300' from sewer line can be served by gravity by lateral installed at minimum slope of 1/8" per foot. Property farther than 300' north of sewer main will need to use sewage pump.
 4. Offset dimensions are from survey line.
 5. Utilities to be removed or relocated as part of Contract at no additional cost.
 6. All sewer joints within ten (10) feet of a tree to be encased as per detail at left.

REVISIONS		CITY OF RIVERSIDE CALIFORNIA DEPARTMENT OF PUBLIC WORKS
MARK	DATE	
Δ	6-11-59	Made Elev. Correction at M.H. 11
★	8-28-59	"As Built" n.Ball

DESIGNED BY: d.r.b.	CHECKED BY: d.r.b.	APPROVED BY: <i>[Signature]</i> DIRECTOR OF PUBLIC WORKS
DRAWN BY: d.r.b.	RECOMMENDED BY: <i>[Signature]</i>	DATE: 12/30/58

UNIVERSITY AVE
 EIGHTH STREET
 Sanitary Sewer and Water District
 CHICAGO AVE TO GAGE CANAL
 To Serve 8th St. Annexation
 1911 ACT
 S-111
 SHEET 1 OF 4

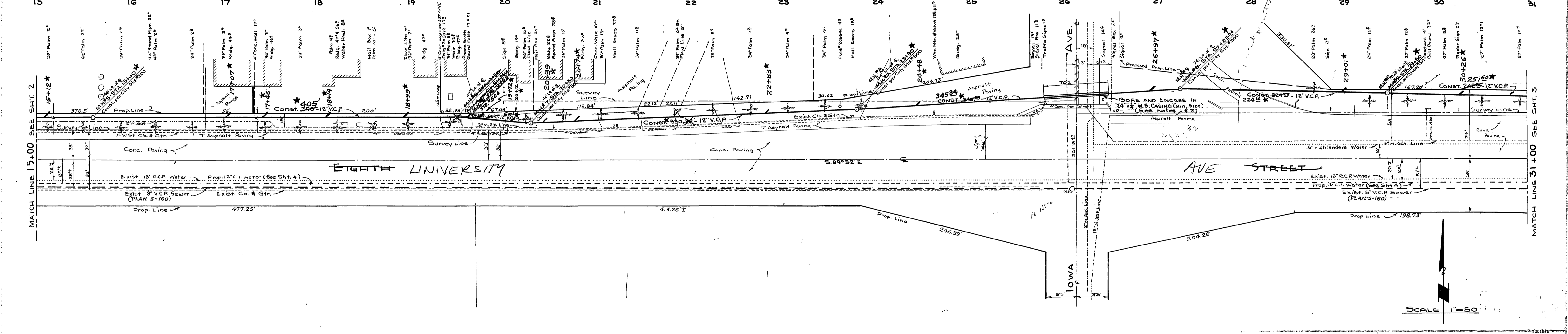
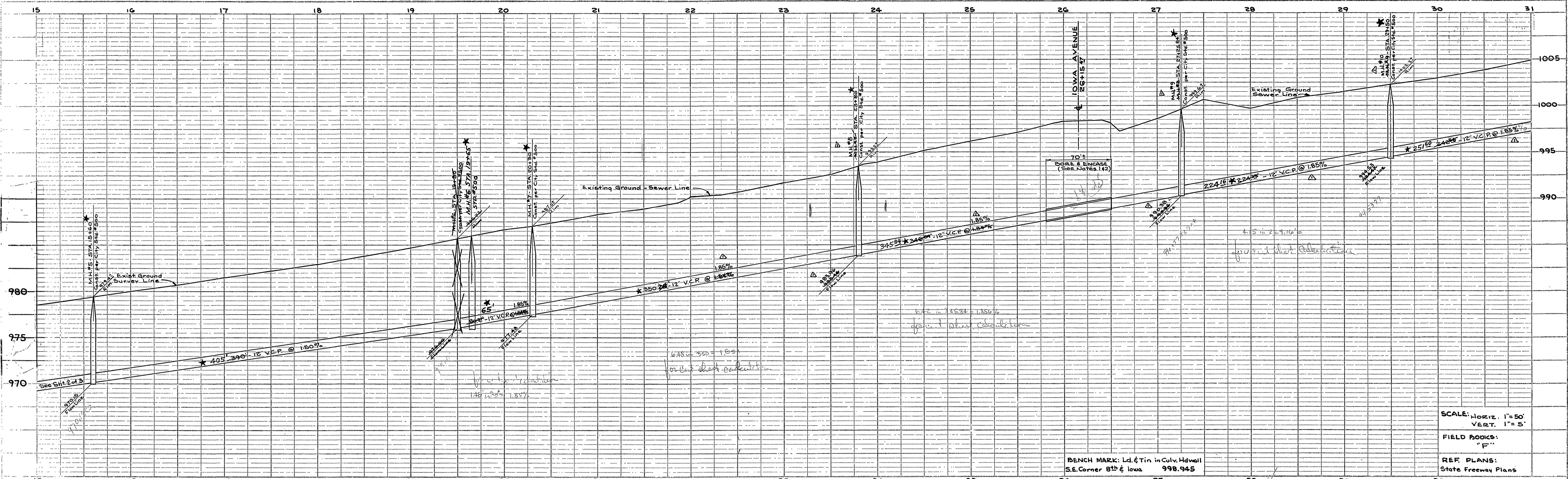
PROFILE

DATE	
BY	
NO.	
NOTE BOOK	
REVISIONS	
STRUCTURE NO.	

PLAN

DATE	
BY	
NO.	
NOTE BOOK	
REVISIONS	
STRUCTURE NO.	

INDEXED E.T.
 R.G. 2513



SCALE: HORIZ. 1"=50'
 VERT. 1"=5'
 FIELD BOOKS:
 "F"
 REF PLANS:
 State Freeway Plans

BENCH MARK: Ld. & Tin in Culv. Hdwall
 S.E. Corner 8th & Iowa 998.945

SCALE 1"=50'

NOTE:
 1. The requirements and specifications of the State Division of Highways concerning the boring and encasement under Iowa Ave & 8th St. are on file in the City Engineers Office, City Hall, Riverside, California.
 2. Maximum horizontal deviation from plan location is 2 feet. Maximum vertical deviation is 0.5', but in no case shall sewer grade be less than given on plan between manholes NB 7 and NB 8.
 3. Open cut across Free Turn Lane permitted if work is done rapidly and surface is restored to original condition.

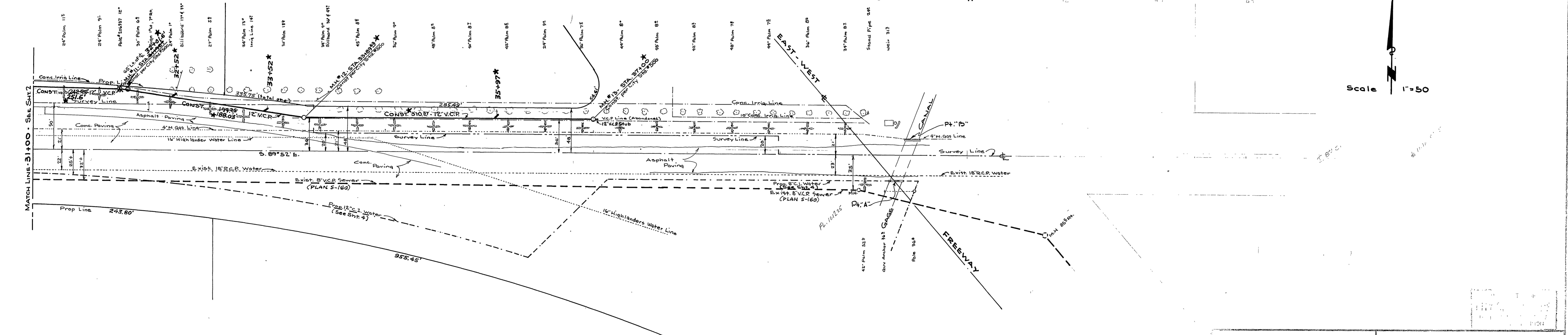
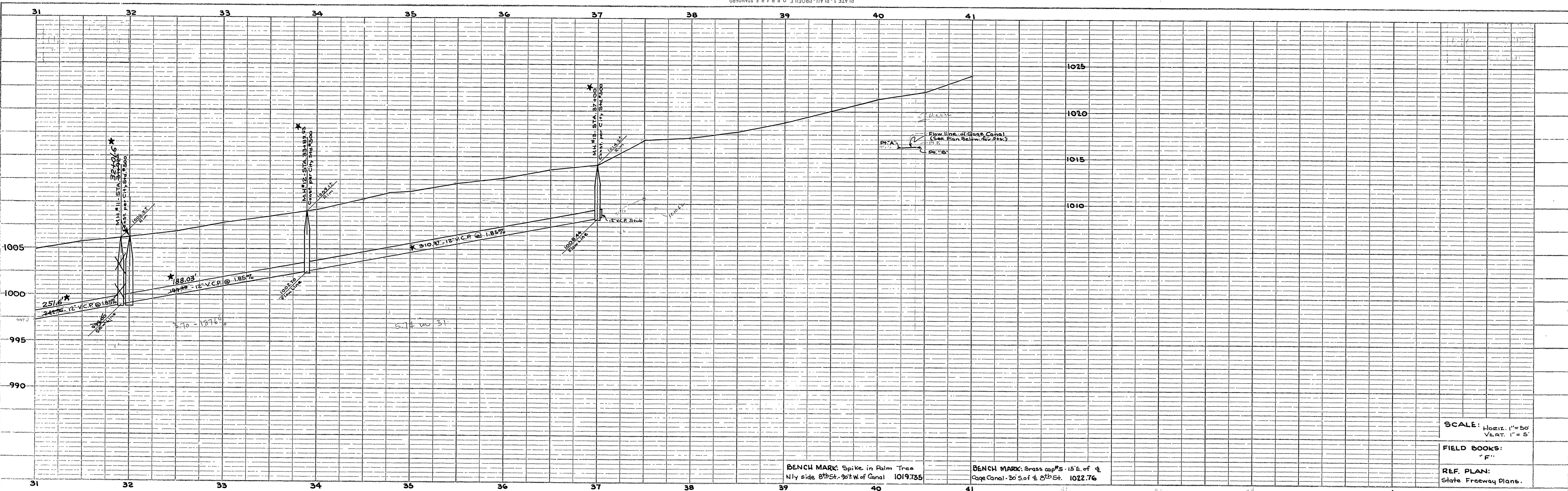
REVISIONS		CITY OF RIVERSIDE, CALIFORNIA DEPARTMENT OF PUBLIC WORKS
DATE	DESCRIPTION	
6-11-59	Made additions & Corrections Noted. d.r.b.	UNIVERSITY AVE EIGHTH STREET Sanitary Sewer and Water District CHICAGO AVE TO GAGE CANAL To Serve 8th St Annexation 1911 ACT
8-28-59	"As Built" H. Ball	

DESIGNED BY d.r.b.	CHECKED BY d.r.b.	TRAFFIC ENGINEER TRAFFIC ENGINEER	APPROVED BY <i>Thomas Stapp</i>	DATE 12/30/58
PROJECT NO. S-III			SHEET 2 OF 4	

PROFILE
 SURVEYED BY
 NOTE BOOK: GRADES CHECKED
 BY M.S. NOTED
 STRUCTURE NOTES ON CH-10

PLAN
 SURVEYED BY
 NOTE BOOK: PLATON, LISTED
 BY M.S. NOTED
 STRUCTURE NOTES ON CH-10

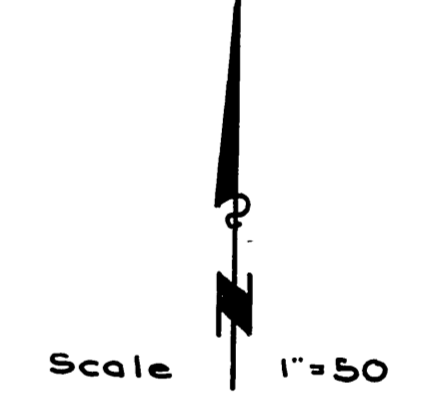
Bored & Encased
 See Previous Plans
 at Corner



SCALE: Horiz. 1"=50'
 Vert. 1"=5'

FIELD BOOKS:
 "F"

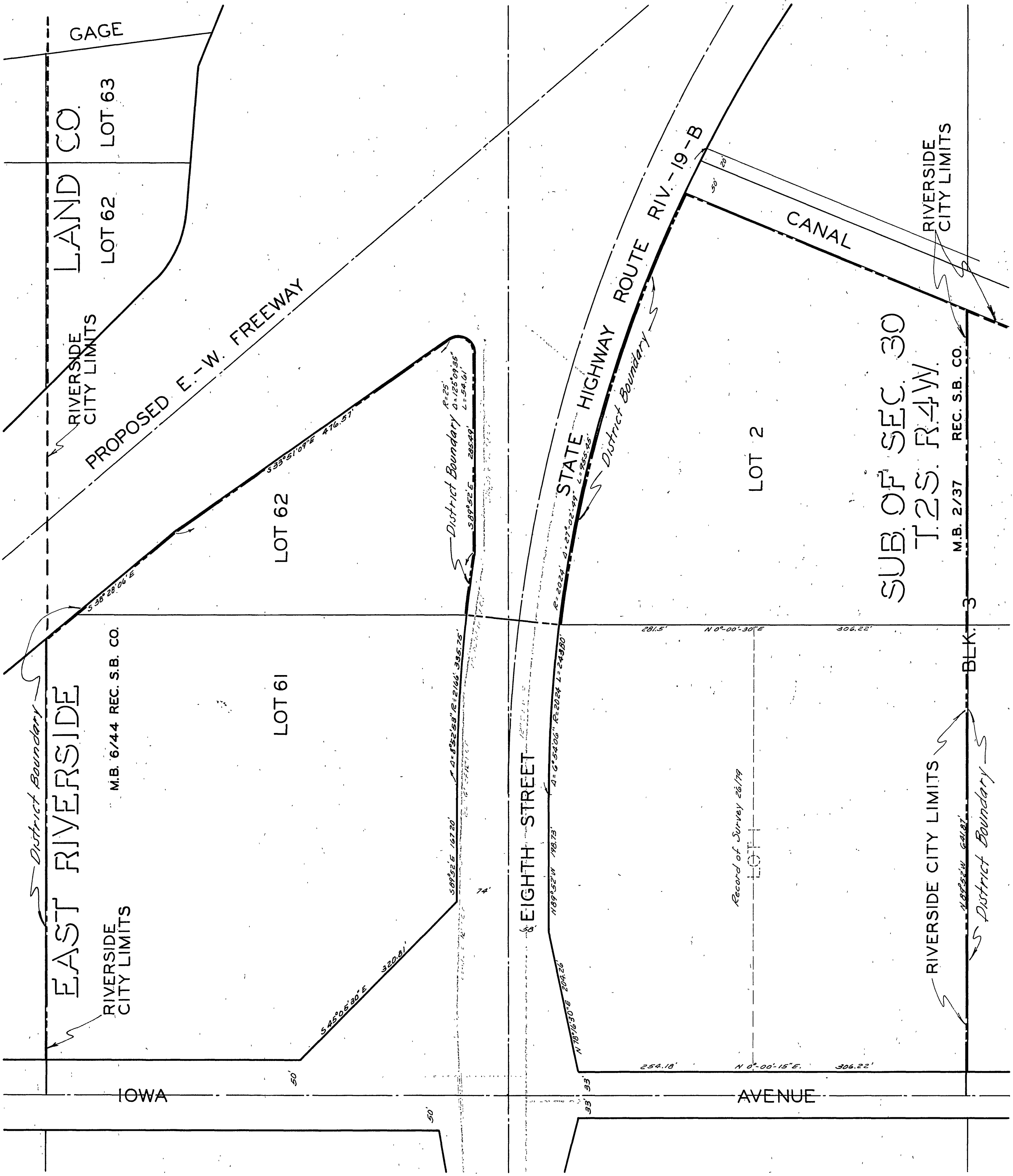
REF. PLAN:
 State Freeway Plans.



DATE	BY	REVISIONS
		NOTED
		PLOTTED
		GRADES CHECKED
		8 MAY 1959
		BY M. J. B. (M. J. B. STANBARD)

DATE	BY	REVISIONS
		NOTED
		PLANNED
		GRADES CHECKED
		BY M. J. B. (M. J. B. STANBARD)

REVISIONS			CITY OF RIVERSIDE, CALIFORNIA DEPARTMENT OF PUBLIC WORKS	
MARK	DATE	DESCRIPTION	UNIVERSITY AVE EIGHTH STREET Sanitary Sewer and Water District Chicago Ave. to GAGE CANAL to Serve 8th St Annexation 1911 Act	
*	8-28-59	"As Built", H. Ball		
DESIGNED BY	SUBMITTED BY	APPROVED BY	PROJ. NO.	
dr.b	wdg	<i>Domartine</i>	80-2513	
DATE	DATE	DATE	DATE	
12/30/58				
S-111			SHEET 3 OF 4	



SUB. OF SEC. 30
T.2S. R.4W.
M.B. 2/37 REC. S.B. CO.

EAST RIVERSIDE

M.B. 6/44 REC. S.B. CO.

RIVERSIDE CITY LIMITS

LOT 62

LOT 61

EIGHTH STREET

LOT 2

STATE HIGHWAY ROUTE RIV-19-B

CANAL

RIVERSIDE CITY LIMITS

BLK. 3

RIVERSIDE CITY LIMITS

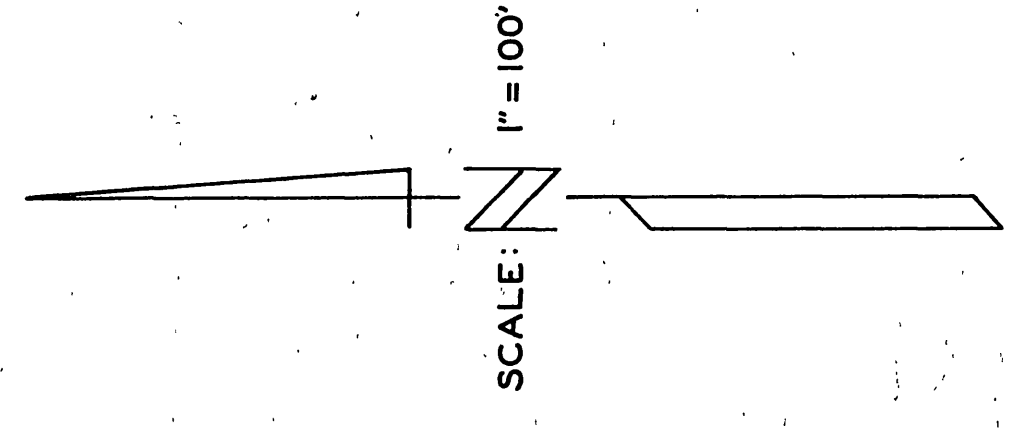


DIAGRAM
OF THE PROPERTY AFFECTED OR BENEFITED
BY THE WORKS

REVISIONS			CITY OF RIVERSIDE CALIFORNIA DEPARTMENT OF PUBLIC WORKS	
MARK	DATE	DESCRIPTION		
			REVISED EIGHTH STREET SANITARY SEWER AND WATER DISTRICT	
DESIGNED BY	CHECKED BY	APPROVED BY		
DRAWN BY		DIRECTOR OF PUBLIC WORKS	S-III	
RECOMMENDED BY	ASSISTANT CITY ENGINEER	DATE	SHEET OF	