

LOCATION MAP
NO SCALE

INDEX MAP
SCALE: 1"=100'

GENERAL NOTES :

1. The private Engineer signing these plans is responsible for the accuracy and acceptability of the work hereon. In the event of discrepancies arising during construction, the private Engineer shall be responsible for determining an acceptable solution and revising the plans for approval by the City.
2. Construction shall be in accordance with the standard Specifications for Public Works Construction 1976 Edition and the City of Riverside Standard Drawings.
3. It shall be the responsibility of the Contractor to clear the Right of Way in accordance with the provisions of law as it affects each utility including irrigation lines and appurtenances and at no cost to the City.
4. Pipe shall be bedded per Case 1, standard Drawing No. 452, unless otherwise specified on the plans.
5. Location of wyes and laterals to be determined in the field at the direction of the owner.
6. All stubs and laterals to be constructed in accordance with standard Drawing No. 562 stubs shall be plugged and capped.
7. Manhole frames and covers to be set as noted in profiles by sewer Contractor after final paving of streets.
8. Laterals are to be 4" VCR extended to property line.
9. Prior to construction of sewer, Contractor is to expose the existing sewer and contact the Engineer for verification of existing location and elevation.
10. Plugs shall be installed and will remain in place where the new sewer connects with the existing sewer until such time as the new sewer is accepted by the city.

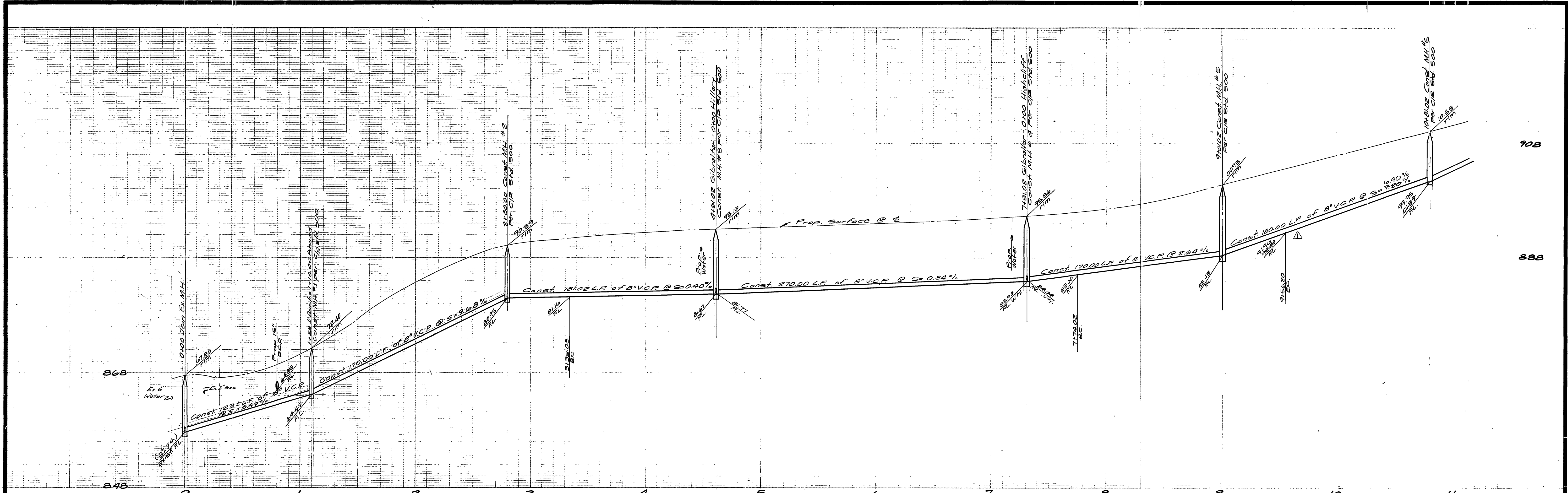
NOTICE TO CONTRACTOR :

The existence and location of underground utility pipes or structures shown on these plans are obtained by a search of the available records to the best of our knowledge there are no existing utilities except as shown on these plans.
The Contractor is required to take due precautionary measures to protect the utility lines shown and any other lines not of record or not shown on these plans.

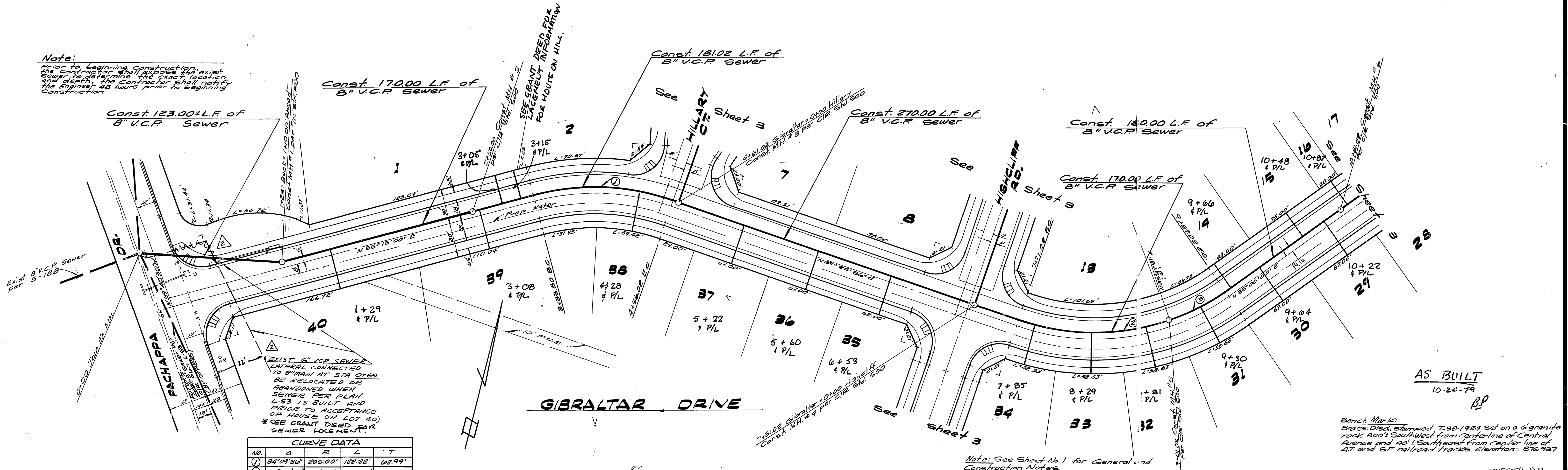
AS BUILT
10-24-77
OP

Bench Mark:
Brass Disc, Stamped T. 23-1924 Set on a 6' granite rock 800' Southwest from Centerline of Central Avenue and 40' Southeast from Centerline of A.T. and S.F. railroad tracks. Elevation = 876.937

CITY OF RIVERSIDE DOMESTIC SYSTEM APPROVED BY: <i>Wesley Styler</i> Chief Utilities Engineer, Water 4-26-77 Date	ALBERT A. WEBB ASSOCIATES CIVIL ENGINEERS RIVERSIDE, CALIFORNIA APPROVED BY: <i>A. D. ...</i> DATE 1/20/77 R.E. No. 27106	CITY OF RIVERSIDE, CALIFORNIA PUBLIC WORKS DEPARTMENT APPROVED BY: <i>...</i> DIRECTOR OF PUBLIC WORKS DATE 7/28/77	ACCOUNT No. DRAWING NUMBER TRACT 5920 INDEX MAP	INDEXED R.R. SHEET 1 OF 3 74-52-B
			W.D. 74-52 FOR: <i>Woodrow Smith</i> F.B. 1039 DESIGNED BY <i>MC</i> DRAWN BY <i>MC</i> CHECKED BY	SCALE: AS SHOWN



Note:
Prior to beginning construction, the contractor shall expose the existing sewer to determine the exact location and depth. The contractor shall notify the Engineer 48 hours prior to beginning construction.



CURVE DATA				
No.	A	R	L	T
1	34°09'36"	205.00'	128.22'	42.99'
2	35°11'49"	196.00'	130.00'	67.52'
3	12°12'47"	195.00'	55.18'	27.78'

EXIST. 6" V.C.P. SEWER LATERAL CONNECTED TO 8" MAIN AT STA 0+62 BE RELOCATED OR ABANDONED WHEN SEWER PER PLAN L-53 IS BUILT AND PRIOR TO ACCEPTANCE OF LOT 40. *SEE GRANT DEED FOR SEWER LOCATION.

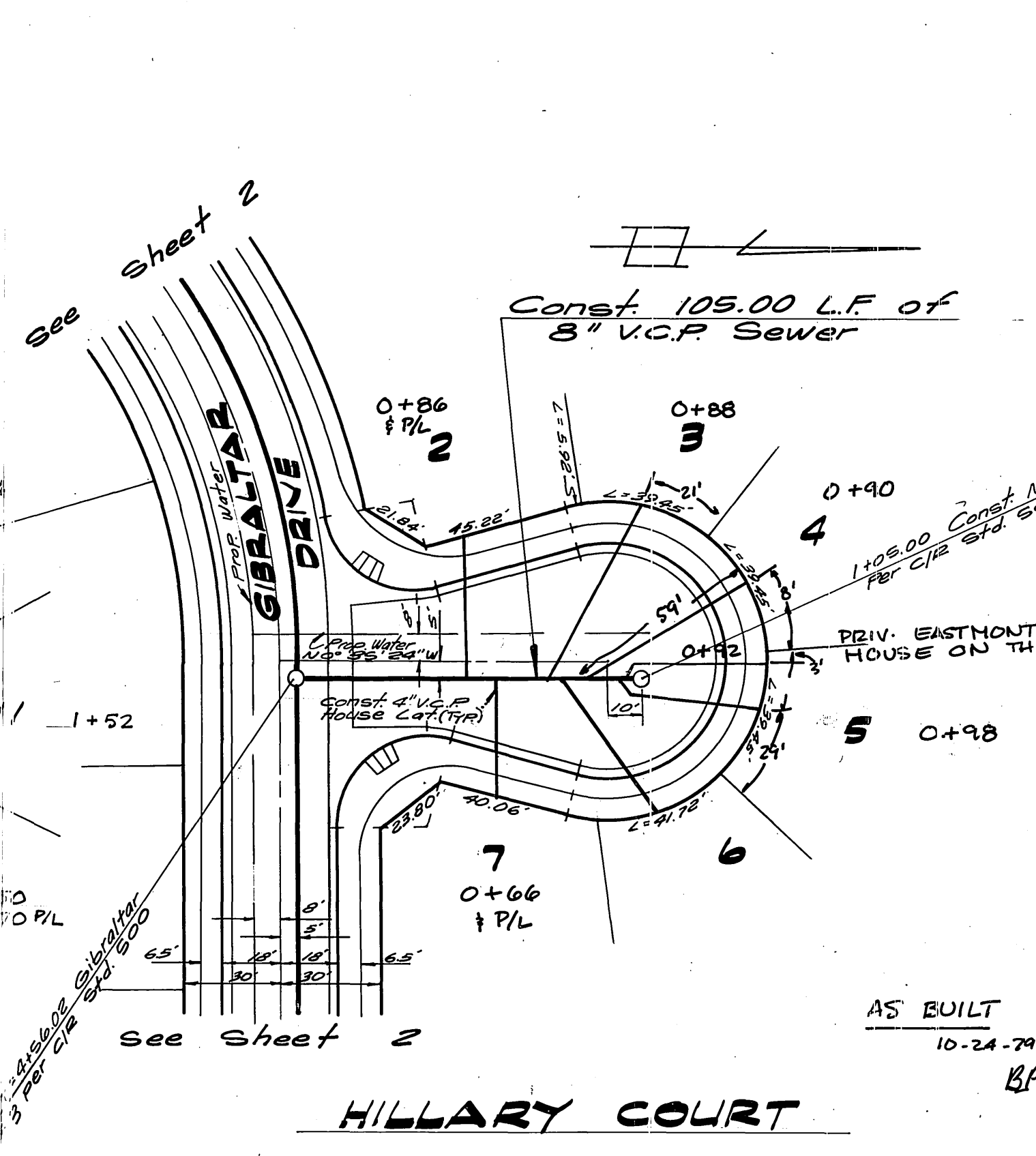
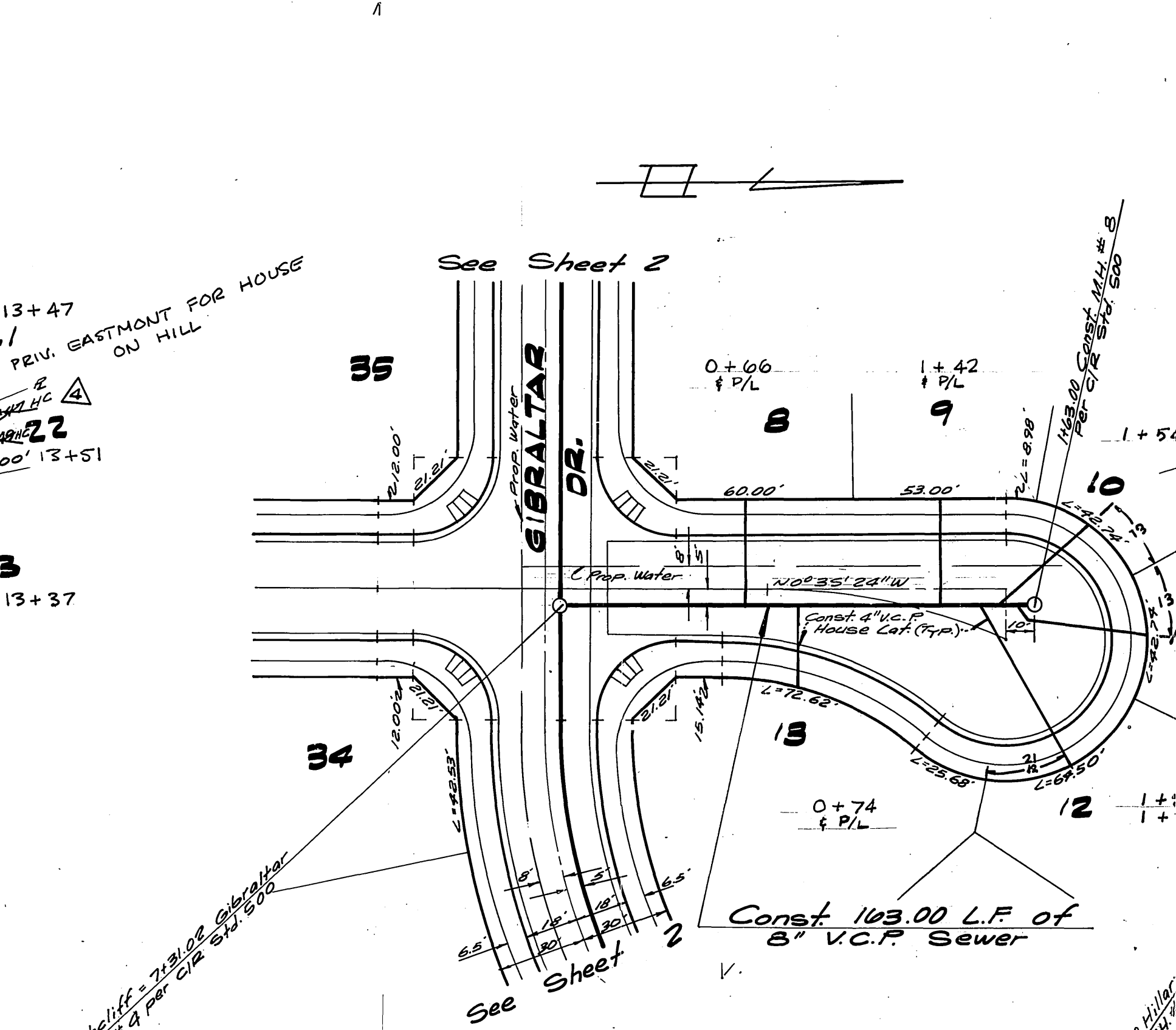
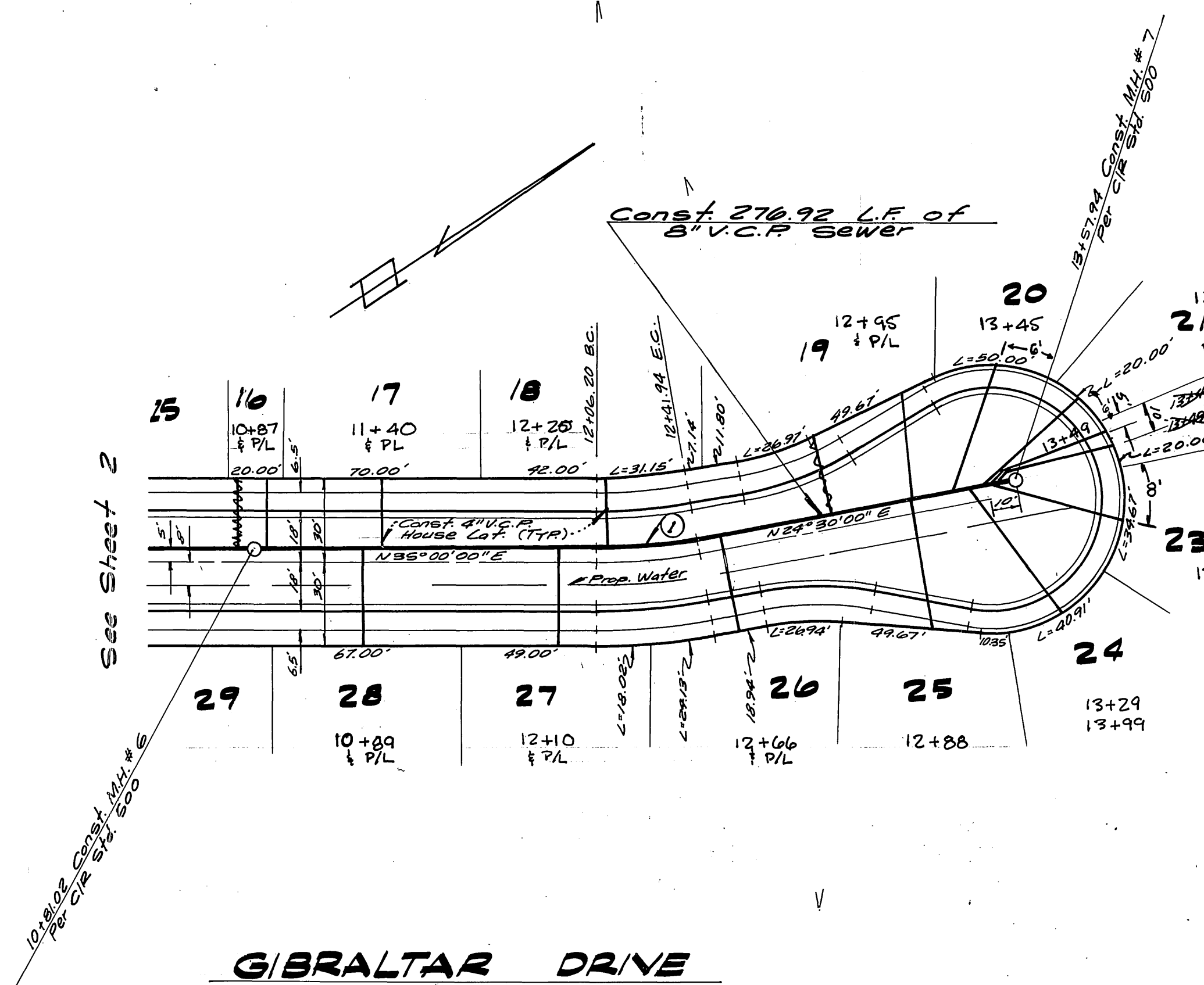
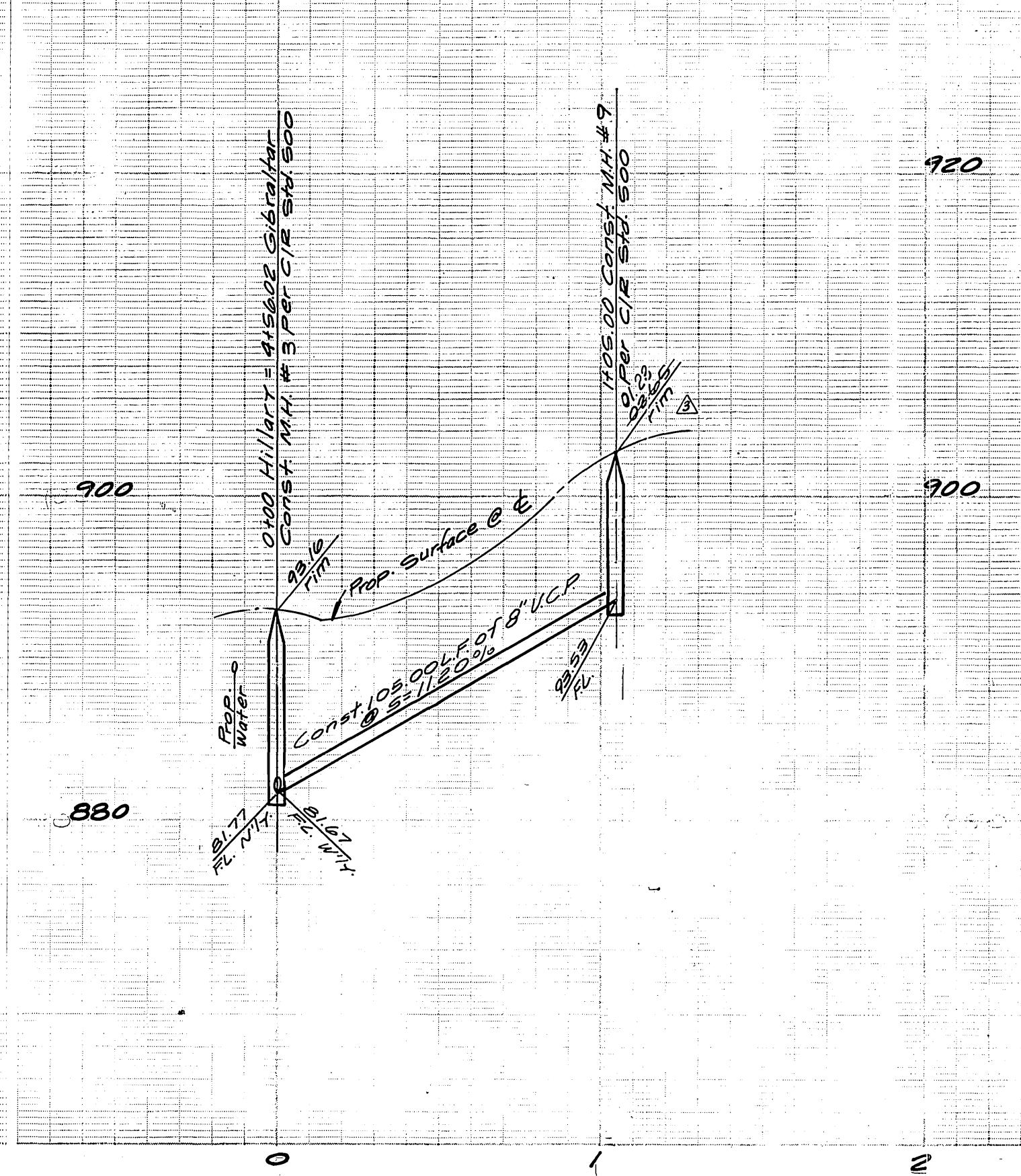
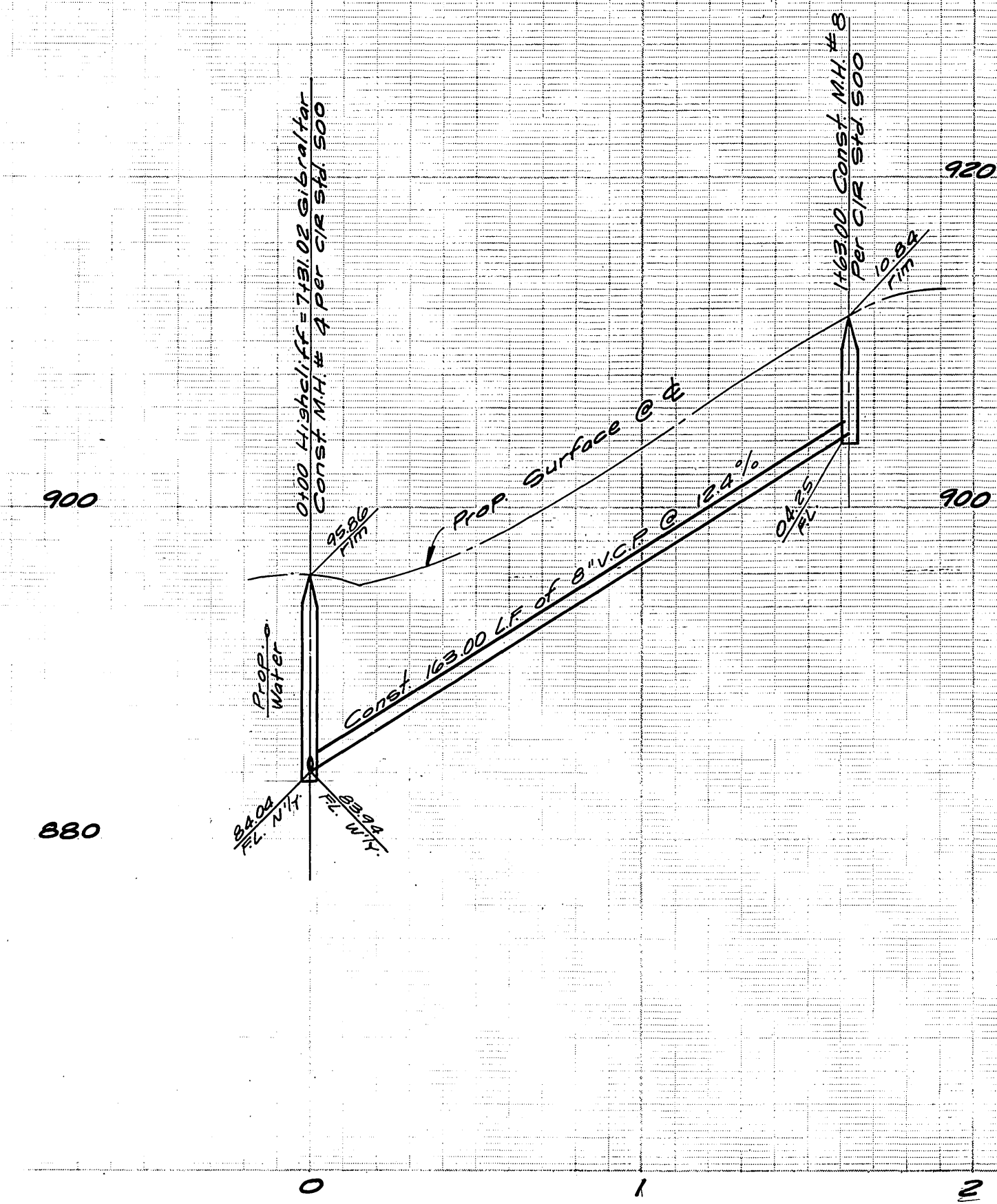
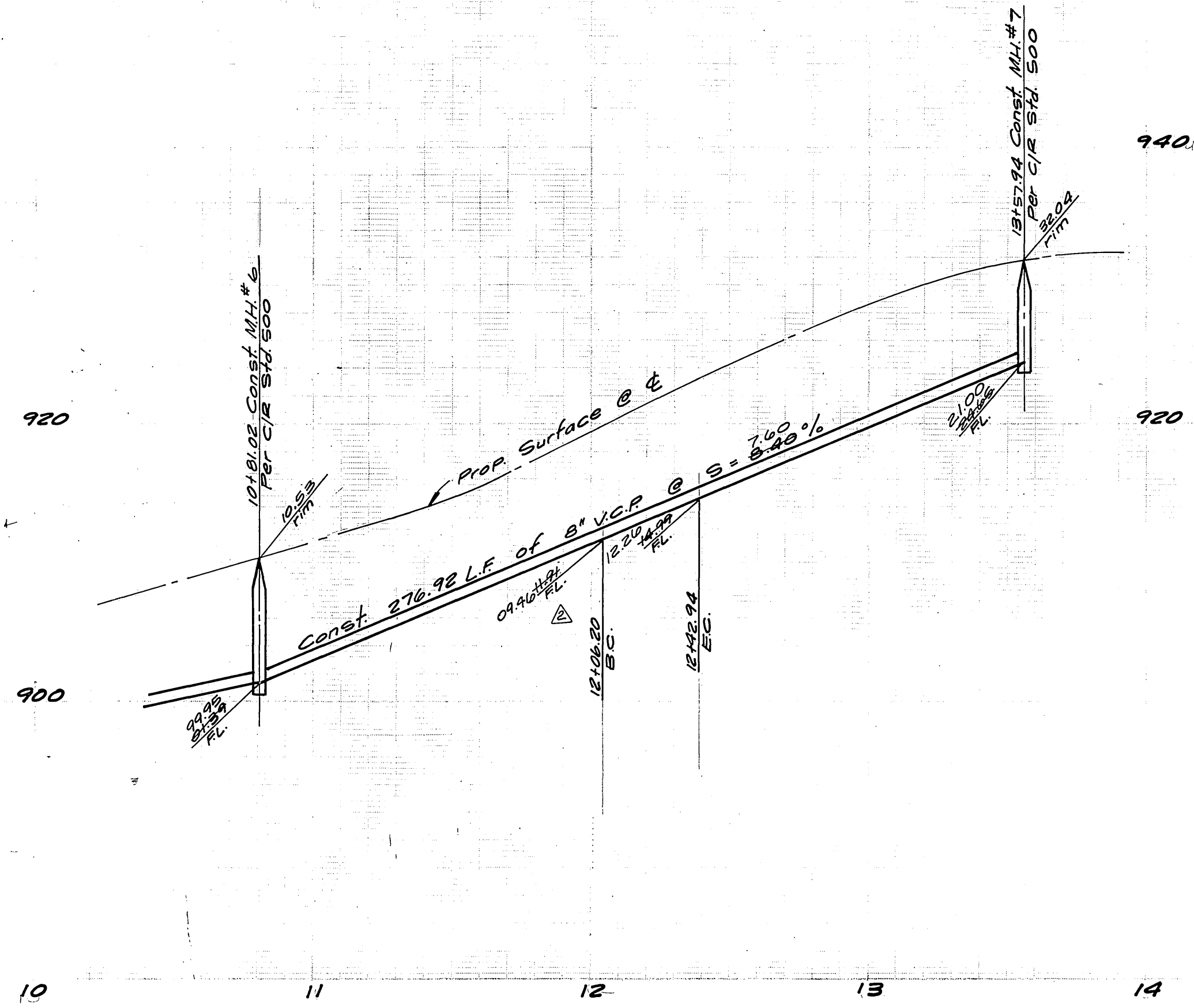
GIBRALTAR DRIVE

AS BUILT
10-24-79
BP

Bench Mark: Brass Disc, stamped 7,38-1924 set on a granite rock 800' Southwest from center line of Central Avenue and 40' Southeast from center line of AT and SF railroad tracks. Elevation = 876.987

Note: See Sheet No. 1 for General and Construction Notes.

CITY OF RIVERSIDE DOMESTIC SYSTEM APPROVED BY: <i>Walter J. Fisher</i> Chief Utilities Engineer, Water 4-26-77 Date	ALBERT A. WEBB ASSOCIATES CIVIL ENGINEERS RIVERSIDE, CALIFORNIA APPROVED BY: <i>A. J. Sanchez</i> DATE 1/28/77 R.E. No. 27105 W.D. 74-52 FOR Woodrow Smith F.B. 1039	Revised Grades bet. M.H. 54 & 55 L.O.L. 1/24/77 ADDED EXIST. LATERAL 9.26.78 10-4-78	CITY OF RIVERSIDE, CALIFORNIA PUBLIC WORKS DEPARTMENT		SEWER PLAN AND PROFILE TRACT 5920 GIBRALTAR DRIVE		ACCOUNT No. S-1111
			APPROVED BY: <i>Walter J. Fisher</i> DATE 1/28/77 PRINCIPAL ENGINEER PARK DEPARTMENT TRAFFIC DIVISION CHIEF PUB. WKS. ENGR.	APPROVED BY: <i>Walter J. Fisher</i> DIRECTOR OF PUBLIC WORKS DATE 1/28/77	SCALE: Horiz. - 1"=40' Vert. - 1"=5'		INDEXED S.R. DRAWING NUMBER S-1111 SHEET 2 OF 3 74-52-B



GIBRALTAR DRIVE

HIGHCLIFF ROAD

HILLARY COURT

CURVE DATA			
No.	Δ	R	T
1	10°30'00"	19800'	36.74' 1792'

CITY OF RIVERSIDE
DOMESTIC SYSTEM

APPROVED BY:
Kathy Hylen
Chief Utilized Engineer, Water 4-26-77 Date

ALBERT A. WEBB ASSOCIATES
CIVIL ENGINEERS
RIVERSIDE, CALIFORNIA

APPROVED BY: *[Signature]* DATE 1/28/77
R.E. No. 27105
W.D. 74-52 FOR: Woodrow Smith F.B. 1039

Revised Grades bet. MH's 6 & 7 L.S. 7/21/77
Revised Tim. elev. - M.H. 9 BE 7/19/78
Added lateral Net Sta 13+47 Gibraltar
to serve exist house on hill. 8-10-78

MARK REVISIONS APPR. DATE

DESIGNED BY MC DRAWN BY MC CHECKED BY

CITY OF RIVERSIDE, CALIFORNIA
PUBLIC WORKS DEPARTMENT

APPROVED BY: *[Signature]*
DIRECTOR OF PUBLIC WORKS
DATE 7/28/77

SEWER PLAN AND PROFILE
TRACT 5920
GIBRALTAR DRIVE,
HIGHCLIFF ROAD,
HILLARY COURT

SCALE: Horiz. - 1"=40' Vert. - 1"=8'

ACCOUNT No.
DRAWING NUMBER
S-1111
SHEET 3 OF 3
74-52-B

Note: See Sheet No. 1 for General and Construction Notes.

Bench Mark:
Brass Disc, stamped T. 35-1924 set on a granite rock 800' Southwest from center line of Central Avenue and 40' South of center line of A.T. and P.F. railroad tracks. Elevation - 876.957

AS BUILT
10-24-79
BP